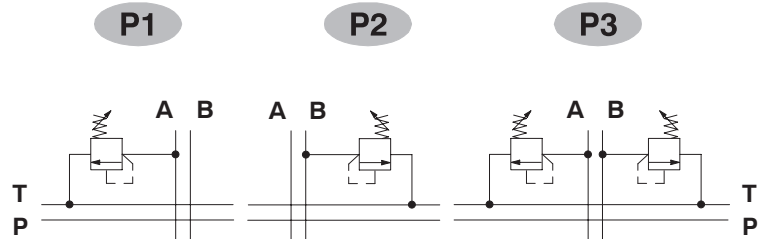


Antishock valves

P 1 (G 3 - 100)

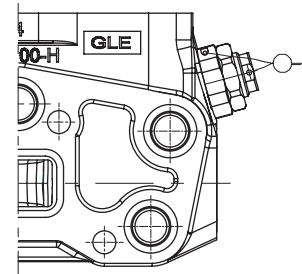
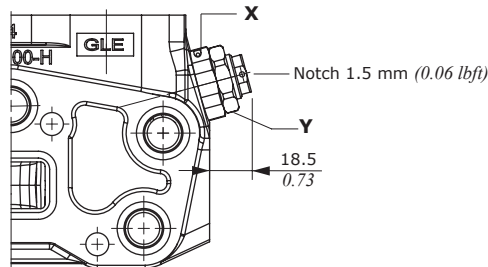
- Valve setting (bar)
- Spring type
- Configuration

- 1 mounted on A port
- 2 mounted on B port
- 3 mounted on A and B ports



Configuration G type: with screw

Configuration H type: valve set and locked

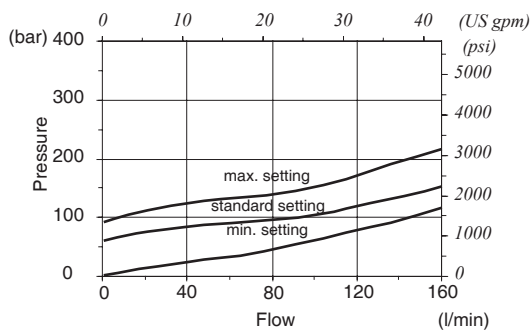


Wrenches and tightening torques

- X = wrench 30 - 42 Nm (31 lbf)
- Y = wrench 27 - 24 Nm (17.7 lbf)

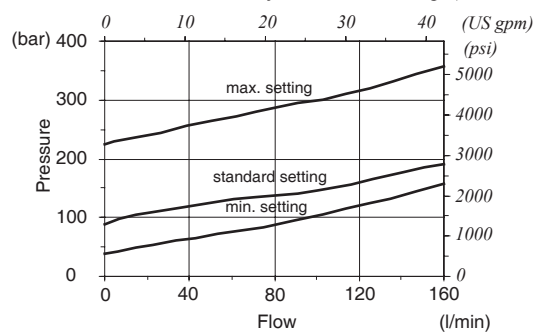
G2 setting range

From 50 to 120 bar (from 725 to 1750 psi)



G3 setting range

From 100 to 250 bar (from 1450 to 3600 psi)



G4 setting range

From 160 to 315 bar (from 2300 to 4600 psi)

