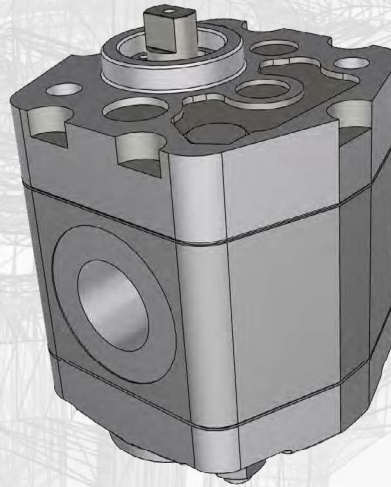


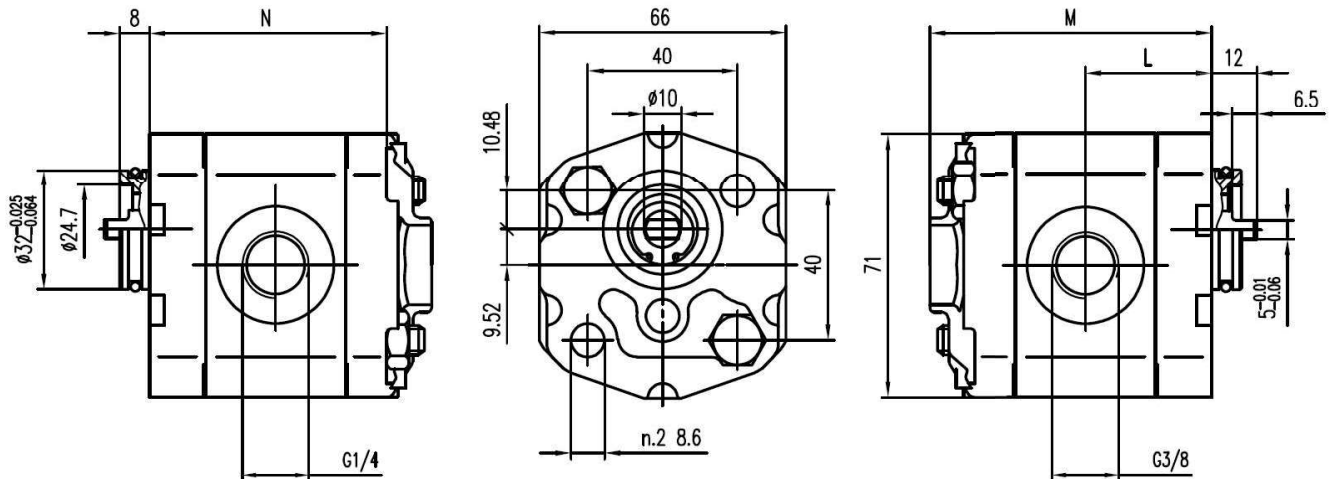
VNK1-*-02-B-38-38

M6 threads depth 12. To mount the pump, n.2 M8 screws, with a torque wrench setting fixed at 27 ±3 Nm.



OUTLET

INLET



Type	Displacement cm ³ /rev	Max. Pressure			Max. Speed r/min	Min. Speed r/min	Dimensions		
		P1	P2	P3			M mm	N mm	L mm
VNK-1-0.8-02-B-38-38-	0.8	250	270	290	6000	1000	73.5	61.5	32.8
VNK-1-1.1-02-B-38-38-	1.1	250	270	290	6000	1000	74	62	33
VNK-1-1.3-02-B-38-38-	1.3	250	270	290	6000	1000	75	63	33.5
VNK-1-1.6-02-B-38-38-	1.6	250	270	290	6000	1000	76	64	34
VNK-1-1.8-02-B-38-38-	1.8	250	270	290	6000	1000	77	65	34.5
VNK-1-2.1-02-B-38-38-	2.1	250	270	290	6000	1000	78	66	35
VNK-1-2.7-02-B-38-38-	2.7	250	270	290	6000	800	80	68	36
VNK-1-3.2-02-B-38-38-	3.2	250	270	290	5000	800	82	70	37
VNK-1-3.7-02-B-38-38-	3.7	250	270	290	4500	800	84	72	38
VNK-1-4.2-02-B-38-38-	4.2	250	270	290	4000	800	86	74	39
VNK-1-4.8-02-B-38-38-	4.8	230	250	270	3500	600	88	76	40
VNK-1-5.8-02-B-38-38-	5.8	230	250	270	3000	600	92	80	42
VNK-1-5.8-02-B-38-38-	7	210	230	250	2500	600	96	84	44
VNK-1-8.0-02-B-38-38-	8	180	200	230	2100	600	100	88	46
VNK-1-9.8-02-B-38-38-	9.8	150	170	190	2100	600	104	92	48

