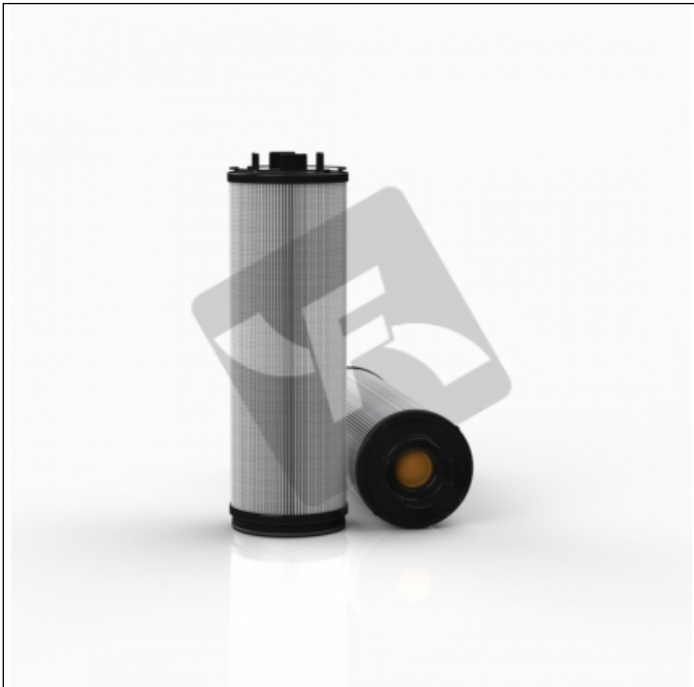
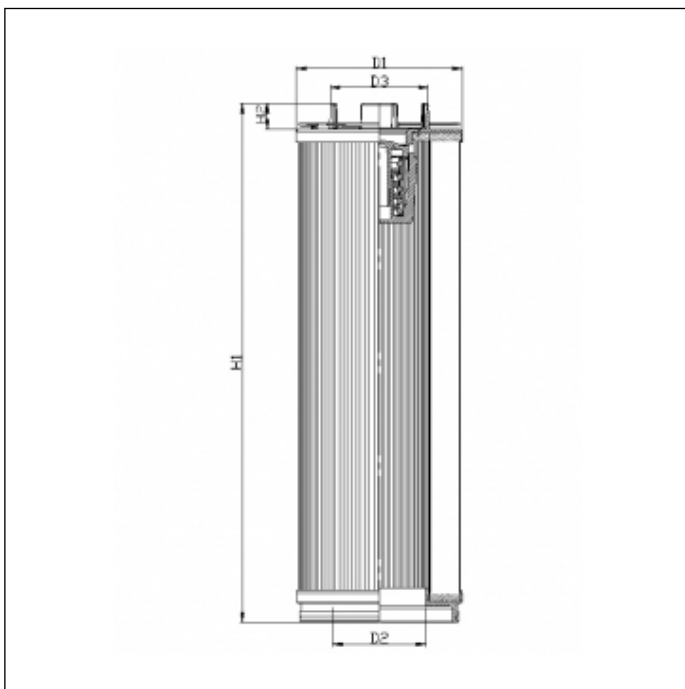


U564GW10B3



TECHNICAL INFO

Media type	FIBERGLASS + WATER REMOVAL
Efficiency	10 $\mu\text{m}_{(c)}$ $\beta_x \geq 200$
Efficiency 1	12 $\mu\text{m}_{(c)}$ $\beta_x \geq 1000$
Flow direction	OUT-IN
Collapse Δp	10 bar
Bypass setting	3.0 bar
Seals	NBR
Temperature range	5°C +100°C



OVERALL DIMENSIONS

D1	153,0 mm
D2	86,0 mm
D3	90,5 mm
H1	916,0 mm
H2	23,5 mm