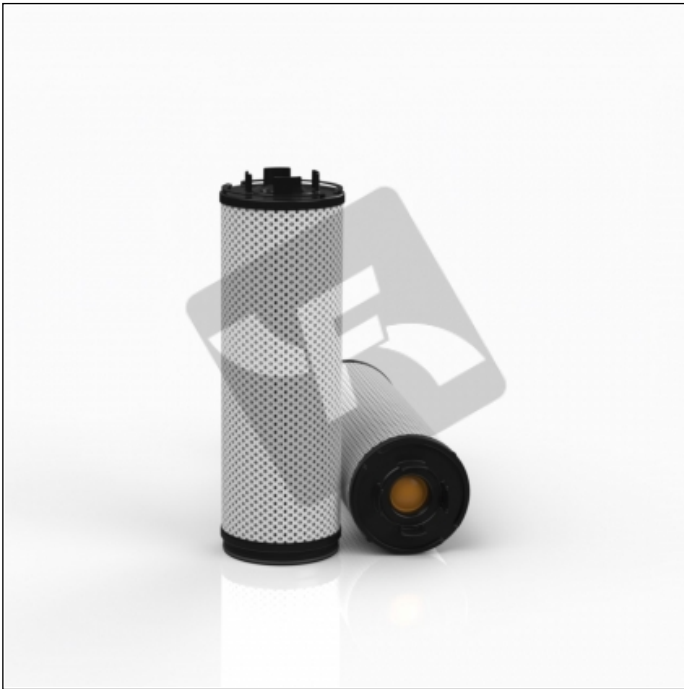
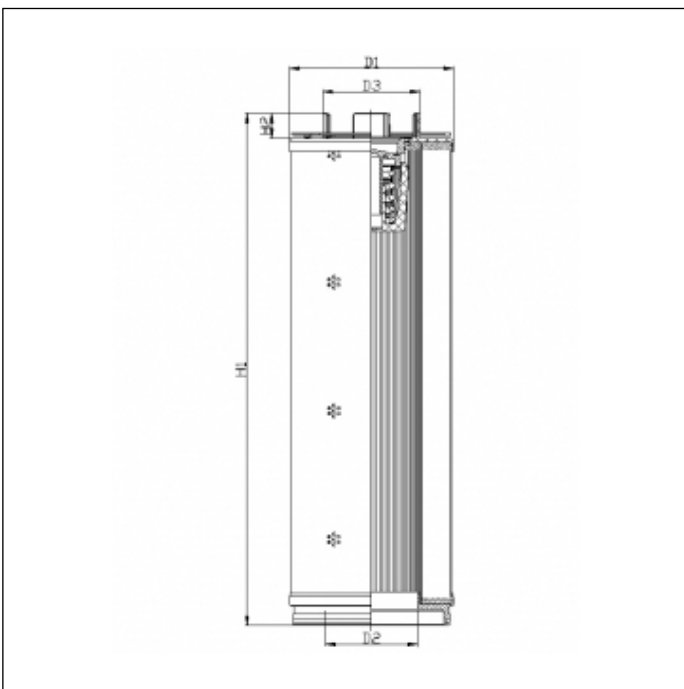


U562G03B3



TECHNICAL INFO

Media type	INORGANIC FIBERGLASS
Efficiency	<math> < 4 \mu\text{m}_{(c)} \beta_x \geq 200 </math>
Efficiency 1	$5 \mu\text{m}_{(c)} \beta_x \geq 1000$
Flow direction	OUT-IN
Collapse Δp	10 bar
Bypass setting	3.0 bar
Seals	NBR
Temperature range	-30°C +100°C



OVERALL DIMENSIONS

D1	153,0 mm
D2	86,0 mm
D3	90,5 mm
H1	478,0 mm
H2	23,5 mm