

TSLV-08



OPERATION

Pressure at ① overcomes the spring-bias ball and allows free flow from ① to ③.

Flow in the opposite direction, from ③ to ①, is blocked by the ball.

When the pressure of ③ port exceeds ① port, ③ to ② open.

SPECIFICATIONS

(Operating Pressure): 240bar

(Flow): See PRESSURE DROP VS.FLOW graph

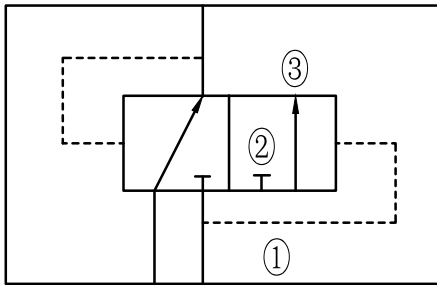
(Internal Leakage): 5 drops/min. max. at 350bar

(Temperature): -40°C → +120°C

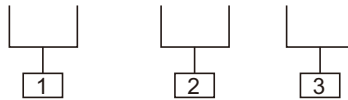
(Cavity): 08-3

(Body Material):

6061-T6 aluminum alloy rated to 207bar; Steel & Ductile iron rated to 350bar



TSLV-08 - **



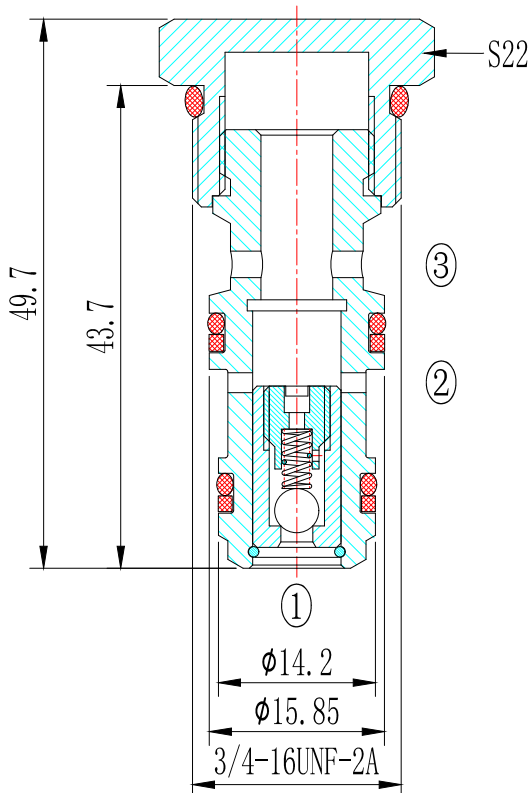
1.Function: TSLV= Ball Type,Cartridge Shuttle Valve

2.Size: 08=08

3.Body Porting:

Blank= None; 4T=SAE4; 6T=SAE6; 2G=G1/4; 3G=G3/8

Other Porting is Available



PRESSURE DROP VS. FLOW

32cSt oil @ 40° C

