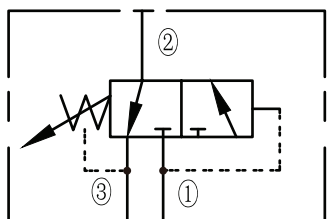




TPS-10



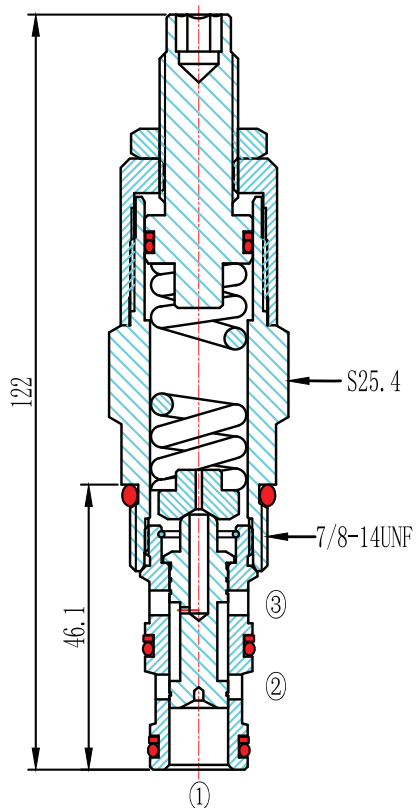
A cartridge-style spool-type sequence valve
with internal pilot and drain

OPERATION

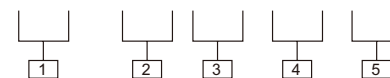
In its steady state, the valve blocks flow at ①, while allowing flow to pass from ② to ③. On attainment of a pre-determined pressure at ①, the cartridge shifts to open ① to ②.

SPECIFICATIONS

(Operating Pressure): 240bar
(Flow): See PRESSURE DROP VS. FLOW graph
(Internal Leakage): 82 cc/min. max. to 85% of nominal setting
(Standard Spring Ranges):
2.8-28 bar, preset:13.8bar
14.5-145 bar, preset:72.5bar
(Temperature): -40°C → +120°C
(Cavity): 10-3
(Body Material):
6061-T6 aluminum alloy rated to 207bar, Steel & Ductile iron rated to 350bar



TPS-10--**-****



1.Function:

TPS= Sequence Valve With Internal Pilot and Drain

2.Size:

10=10

3.Spring Ranges

4=2.8-28bar; Preset: 13.8bar;

21=14.5-145bar; Preset: 72.5bar

4. Setting In Bar

Blank= Preset : EXAMPLE:0120=120bar

5.Body Porting:

Blank= None; 6T=SAE6;

8T=SAE8; 2G=G1/4; 3G=G3/8

Other Porting is Available

