

## Q80 Sectional Directional Control Valve

Pressioni massime di lavoro [bar] Max working pressure (PSI)	da 1 a 3 elementi from 1 up to 3 working sections	350 (5075)
	da 4 a 6 elementi from 4 up to 6 working sections	320 (4640)
	da 7 a 10 elementi from 7 up to 10 working sections	300 (4350)
Pressione massima sullo scarico [bar] Max back pressure (PSI)		25 (363)

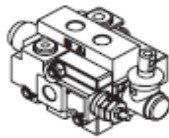
DISTRIBUTORI COMPONIBILI



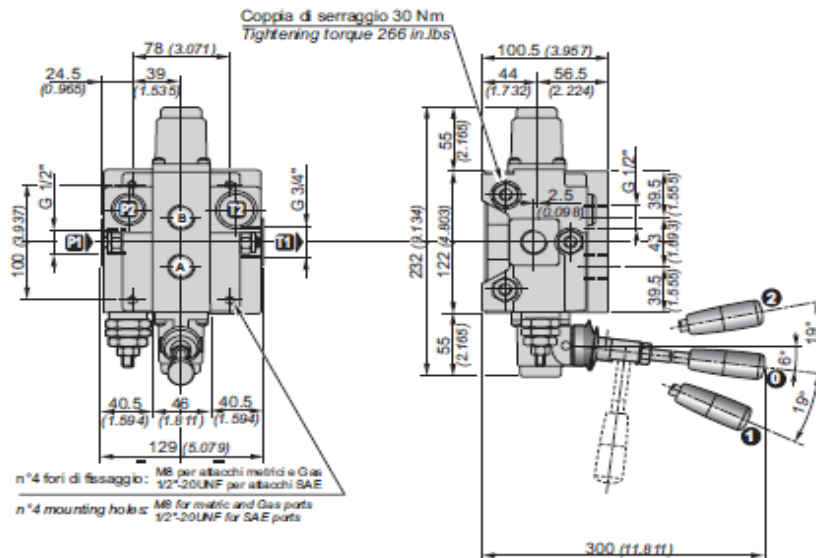
SECTIONAL DIRECTIONAL CONTROL VALVES

**Q80**

DISTRIBUTORI COMPONIBILI  
SECTIONAL DIRECTIONAL CONTROL VALVES



(Standard)  
Comando e posizionatore in Alluminio  
Control and positioner Aluminium



Q80 — F7S R250 MSE — E50 R250 — 2x 103 A1 M1 V30 R250 V01 — F3D — 12V — 2E+1  
1 2 3 4 5 6 7 8 9 10 11 12 13 16 17

Filettature disponibili / Available ports

Bocche Ports	BSP (standard)	BSP G 3/4"	SAE
P1	G 1/2"	G 3/4"	7/8" - 14UNF (SAE 10)
P2	G 1/2"	G 3/4"	7/8" - 14UNF (SAE 10)
A-B	G 1/2"	G 3/4"	3/4" - 18UNF (SAE 8)
T1	G 3/4"	G 3/4"	1" 1/16" - 12UN (SAE 12)
T2	G 3/4"	G 3/4"	7/8" - 14UNF (SAE 10)

Tappo per carry-over (su uscita T1)  
Carry-over plug (on T1 port)

	T1	G 3/4"
X	G 1/2" - G 3/4"	
T1	1" 1/16" - 12UN (SAE 12)	
X	7/8" - 14UNF (SAE 10)	
T1	G 3/4"	
X	G 3/4"	

Dimensioni in / Dimensions in: mm (inch)

DISTRIBUTORI COMPONIBILI



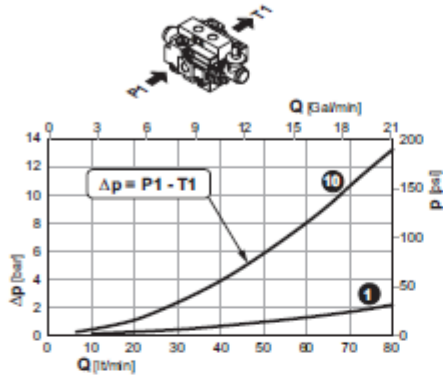
SECTIONAL DIRECTIONAL CONTROL VALVES

## Q80

## DISTRIBUTORI COMPONIBILI SECTIONAL DIRECTIONAL CONTROL VALVES

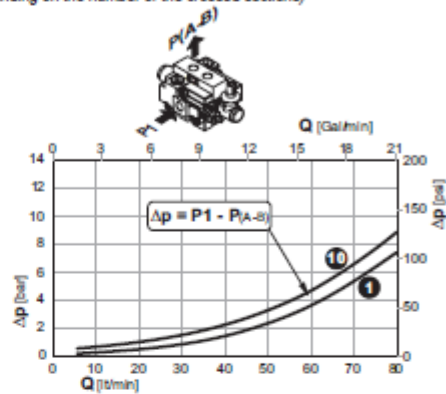
**Perdite di carico con il cursore in posizione neutra**  
( $\Delta p$  in funzione del numero di sezioni attraversate)

**Pressure drop with spool in neutral position**  
( $\Delta p$  depending on the number of the crossed sections)



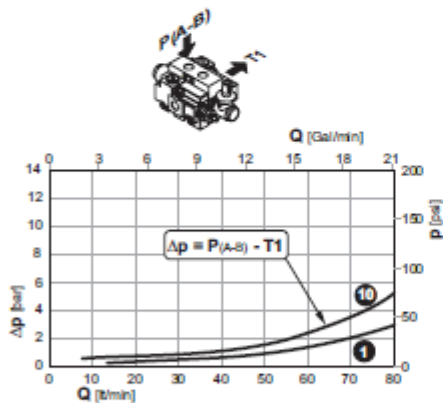
**Perdite di carico con il cursore in posizione di lavoro**  
( $\Delta p$  in funzione del numero di sezioni attraversate)

**Pressure drop with spool in working position**  
( $\Delta p$  depending on the number of the crossed sections)



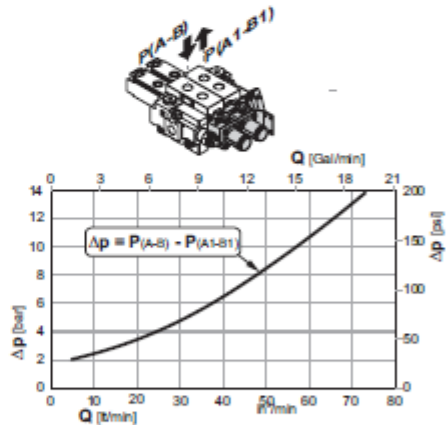
**Perdite di carico con il cursore in posizione di lavoro**  
( $\Delta p$  in funzione del numero di sezioni attraversate)

**Pressure drop with spool in working position**  
( $\Delta p$  depending on the number of the crossed sections)



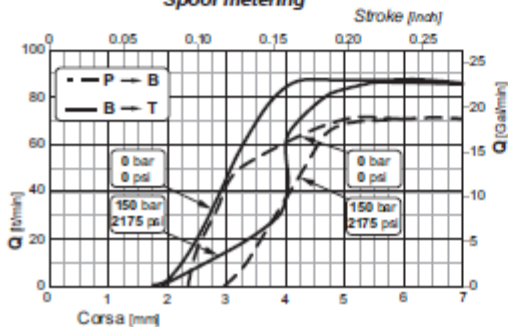
**Perdite di carico tra due elementi in serie**

**Pressure drop through two sections connected in series**

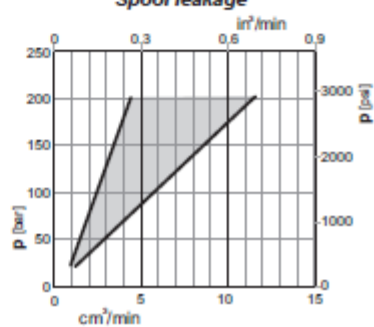


1 10 Sezioni / Sections

### Curve di progressività Spool metering



### Trafilamenti sul cursore Spool leakage

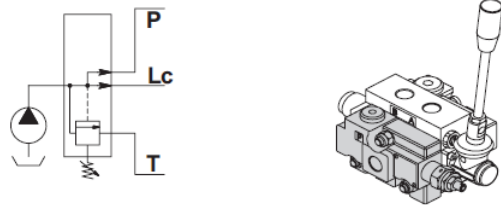


## Q80 Inlet Sections

**F7S**

**F17S**

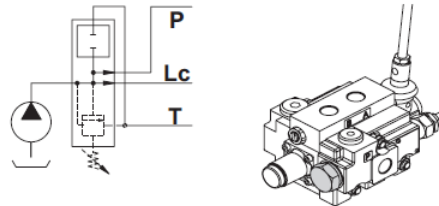
Collettore di entrata con valvola limitatrice di pressione VLP  
*Inlet section with relief valve VLP*



		molla bianca white spring	molla nera black spring	molla rossa red spring
R	Tipo di molla per la VLP <i>Type of spring for relief valve</i>	<b>B</b>	<b>N</b>	<b>R</b>
Campi di taratura / Calibration fields bar (psi)				
250	Taratura della VLP <i>VLP Setting</i>	10 ÷ 80 (145 ÷ 1160)	81 ÷ 200 (1175 ÷ 2900)	201 ÷ 380 (2915 ÷ 5510)

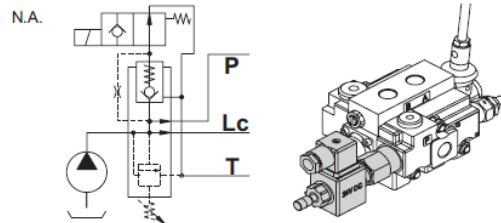
**PMS**

Collettore di entrata con predisposizione per valvola di messa a scarico elettrica (indiretta) o idraulica  
*Inlet section presets for electrical outlet release valve (indirect) or hydraulic*



**MSE**

Collettore di entrata con valvola di messa a scarico elettrica (indiretta)  
*Inlet section with electrical outlet release valve (indirect)*



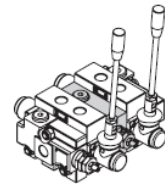
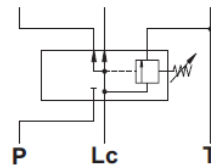
**N.B.**  
 Specificare tensione e schema dell'elettrovalvola  
*Specify voltage and type of the solenoid operated valve*

Tensione Voltage	Schema Scheme		
12 V.DC	N.C.	Normalmente chiusa <i>Usually closed</i>	
24 V.DC	N.A.	Normalmente aperta <i>Usually open</i>	

## Q80 Intermediate Sections

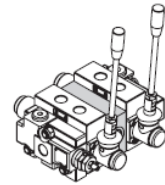
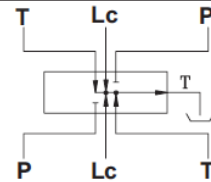
### E50

Elemento intermedio con VLP  
Intermediate section with relief valve



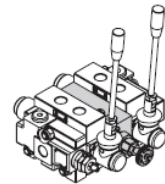
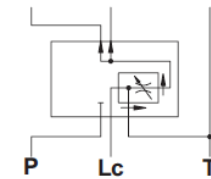
### E51

Collettore di uscita intermedio  
Intermediate outlet section



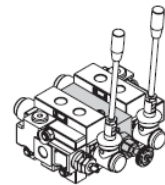
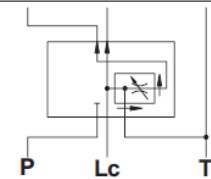
### E58

Elemento intermedio con divisore di portata 3 vie compensato registrabile con cacciavite (tipo "C") o con volantino (tipo "V"), centro chiuso  
Intermediate section with 3 way flow divider adjustable and compensated with screw (type "C") or handwheel (type "V"), through passage closed



### E68

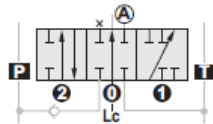
Elemento intermedio con divisore di portata 3 vie compensato registrabile con cacciavite (tipo "C") o con volantino (tipo "V"), centro aperto  
Intermediate section with 3 way flow divider adjustable and compensated with screw (type "C") or handwheel (type "V"), through passage opened



## Q80 Slice Spool Types

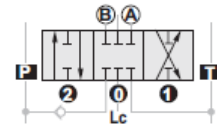
**101**

Semplice effetto in A  
Single acting in A port



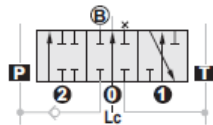
**106**

Doppio effetto, passaggi chiusi  
in posizione 0  
Double acting, ports closed  
in 0 position



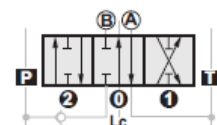
**102**

Semplice effetto in B  
Single acting in B port



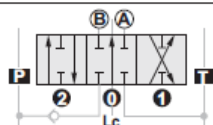
**107**

Doppio effetto, A in T e B chiuso  
in posizione 0  
Double acting, A to T and B closed  
in 0 position



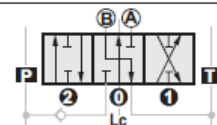
**103**

Doppio effetto, A e B chiusi  
in posizione 0  
Double acting, A and B closed  
in 0 position



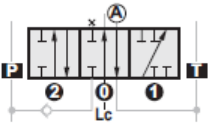
**108**

Doppio effetto, B in T e A chiuso  
in posizione 0  
Double acting, B to T and A closed  
in 0 position



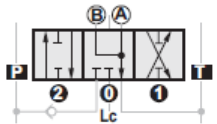
**109**

Semplice effetto in A, A in T  
in posizione 0  
Single acting in A, A to T  
in 0 position



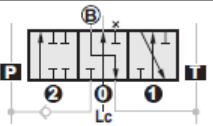
**114**

Doppio effetto, A e B in T e  
Lc chiusa  
in posizione 0  
Double acting, A and B to T and  
through passage closed in 0 position



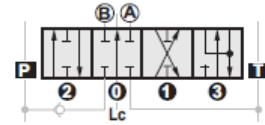
**110**

Semplice effetto in B, B in T  
in posizione 0  
Single acting in B, B to T  
in 0 position



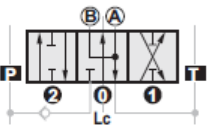
**116**

Doppio effetto con 4ª  
posizione flottante  
Double acting with 4th  
position floating



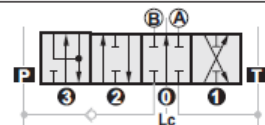
**111**

Doppio effetto, A e B in T  
in posizione 0  
Double acting, A and B to T  
in 0 position



**126**



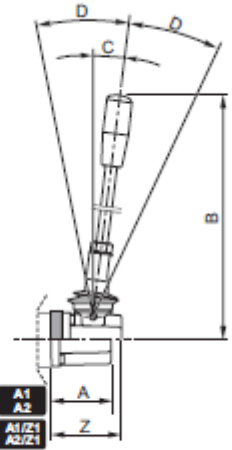
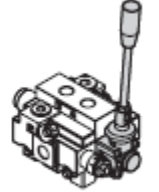
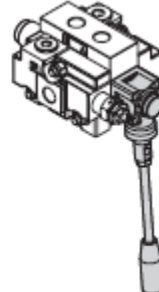
Doppio effetto con 4ª  
posizione flottante  
Double acting with 4th  
position floating

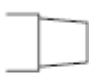
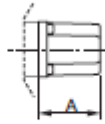
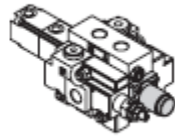


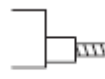
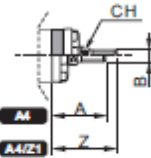
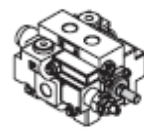
\* Limitazioni / Limitations

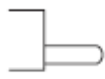
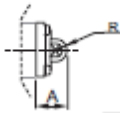
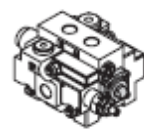
Cursore Spools	Applicabile con: / Applicable with:		
	Comando / Control	Posizionatore / Positioner	Valvole / Valves
116	A1-Z1 / A2-Z1 / A4-Z1 / A6-Z1 / A8-Z1	R8	Tutte le valvole a cartuccia e tutte le valvole a pannello All of the cartridge valves and all of the panel valves
126	A1 / A2 / A4 / A5 / A6 / A8 / SL / SLA15 / A15 / A16	R10-Z1	

## Q80 Lever End Options

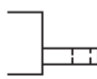
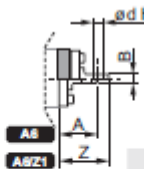
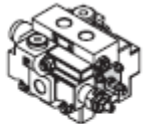
A1	A1/Z1																		
<p>A1: Comando manuale con leva standard A1: Hand control with standard lever</p> 																			
<p>A1/Z1: Versione con kit distanziale per il montaggio del cursore 116 A1/Z1: Version with spacer kit for installation of spool 116</p>																			
A2	A2/Z1																		
<p>A2: Comando manuale con leva standard ruotata di 180° A2: Hand control with standard lever rotated 180°</p> 																			
<p>A2/Z1: Versione con kit distanziale per il montaggio del cursore 116 A2/Z1: Version with spacer kit for installation of spool 116</p>																			
																			
																			
																			
	<table border="1"> <thead> <tr> <th></th> <th>A</th> <th>B</th> <th>C</th> <th>D</th> <th>Z</th> </tr> </thead> <tbody> <tr> <td>Q30 - GSV50</td> <td>42 (1.054)</td> <td>211 (8.307)</td> <td>5°</td> <td>13°</td> <td>50,5 (1.988)</td> </tr> <tr> <td>Q80 - Q130</td> <td>55 (2.165)</td> <td>280 (10.236)</td> <td>6°</td> <td>10°</td> <td>68,5 (2.697)</td> </tr> </tbody> </table>		A	B	C	D	Z	Q30 - GSV50	42 (1.054)	211 (8.307)	5°	13°	50,5 (1.988)	Q80 - Q130	55 (2.165)	280 (10.236)	6°	10°	68,5 (2.697)
	A	B	C	D	Z														
Q30 - GSV50	42 (1.054)	211 (8.307)	5°	13°	50,5 (1.988)														
Q80 - Q130	55 (2.165)	280 (10.236)	6°	10°	68,5 (2.697)														

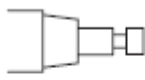
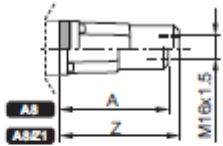
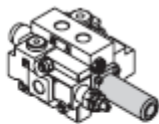
A3						
<p>Scatola di protezione in sostituzione del comando manuale con leva Cap replacing hand control with lever</p> 						
						
<table border="1"> <thead> <tr> <th></th> <th>A</th> </tr> </thead> <tbody> <tr> <td>Q30 - GSV50</td> <td>42 (1.054)</td> </tr> <tr> <td>Q80 - Q130</td> <td>55 (2.165)</td> </tr> </tbody> </table>		A	Q30 - GSV50	42 (1.054)	Q80 - Q130	55 (2.165)
	A					
Q30 - GSV50	42 (1.054)					
Q80 - Q130	55 (2.165)					
						




A4	A4/Z1																		
<p>A4: Attacco diretto sul cursore per rinvio a distanza rigido A4: Direct control connection on spool for stiff remote control</p> 																			
<p>A4/Z1: Versione con kit distanziale per il montaggio del cursore 116 A4/Z1: Version with spacer kit for installation of spool 116</p>																			
																			
																			
	<table border="1"> <thead> <tr> <th></th> <th>A</th> <th>B</th> <th>CH</th> <th>Corsa Stroke</th> <th>Z</th> </tr> </thead> <tbody> <tr> <td>Q30 - GSV50</td> <td>30 (1.535)</td> <td>M8</td> <td>9 (0.354)</td> <td>±5 (0.197)</td> <td>47.5 (1.870)</td> </tr> <tr> <td>Q80 - Q130</td> <td>53 (2.087)</td> <td>M10</td> <td>14 (0.551)</td> <td>±7 (0.270)</td> <td>68.5 (2.618)</td> </tr> </tbody> </table>		A	B	CH	Corsa Stroke	Z	Q30 - GSV50	30 (1.535)	M8	9 (0.354)	±5 (0.197)	47.5 (1.870)	Q80 - Q130	53 (2.087)	M10	14 (0.551)	±7 (0.270)	68.5 (2.618)
	A	B	CH	Corsa Stroke	Z														
Q30 - GSV50	30 (1.535)	M8	9 (0.354)	±5 (0.197)	47.5 (1.870)														
Q80 - Q130	53 (2.087)	M10	14 (0.551)	±7 (0.270)	68.5 (2.618)														

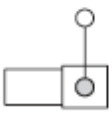
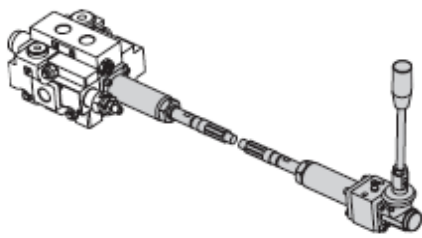
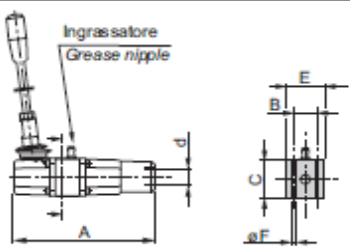
A5												
<p>Attacco diretto sul cursore con terminale sferico (da utilizzare solo con il posizionamento M4 (2-1)) Direct control connection on spool with spherical end (Control to be used for positioning M4 (2-1))</p> 												
												
<table border="1"> <thead> <tr> <th></th> <th>A</th> <th>R</th> <th>Corsa Stroke</th> </tr> </thead> <tbody> <tr> <td>Q30 - GSV50</td> <td>22 (0.866)</td> <td>6.85 (0.270)</td> <td>±5 (0.197)</td> </tr> <tr> <td>Q80 - Q130</td> <td>33 (1.299)</td> <td>8.75 (0.344)</td> <td>±7 (0.270)</td> </tr> </tbody> </table>		A	R	Corsa Stroke	Q30 - GSV50	22 (0.866)	6.85 (0.270)	±5 (0.197)	Q80 - Q130	33 (1.299)	8.75 (0.344)	±7 (0.270)
	A	R	Corsa Stroke									
Q30 - GSV50	22 (0.866)	6.85 (0.270)	±5 (0.197)									
Q80 - Q130	33 (1.299)	8.75 (0.344)	±7 (0.270)									
												

## Q80 Lever End Options continued...

A6	A6/Z1																		
<p>A6: Attacco diretto sul cursore con terminale ad occhio fisso                      A6: Direct control connection on spool eye end</p> 																			
<p>A6/Z1: Versione con kit distanziale per il montaggio del cursore 116                      A6/Z1: Version with spacer kit for installation of spool 116</p> 																			
																			
<table border="1"> <thead> <tr> <th></th> <th>A</th> <th>B</th> <th>d</th> <th>Corsa Stroke</th> <th>Z</th> </tr> </thead> <tbody> <tr> <td>Q30 - GSV50</td> <td>20 (0.787)</td> <td>6 (0.236)</td> <td>9 (0.354)</td> <td>±5 (0.197)</td> <td>28.5 (1.122)</td> </tr> <tr> <td>Q80 - Q130</td> <td>27 (1.063)</td> <td>7 (0.276)</td> <td>11 (0.433)</td> <td>±7 (0.276)</td> <td>40.5 (1.594)</td> </tr> </tbody> </table>			A	B	d	Corsa Stroke	Z	Q30 - GSV50	20 (0.787)	6 (0.236)	9 (0.354)	±5 (0.197)	28.5 (1.122)	Q80 - Q130	27 (1.063)	7 (0.276)	11 (0.433)	±7 (0.276)	40.5 (1.594)
	A	B	d	Corsa Stroke	Z														
Q30 - GSV50	20 (0.787)	6 (0.236)	9 (0.354)	±5 (0.197)	28.5 (1.122)														
Q80 - Q130	27 (1.063)	7 (0.276)	11 (0.433)	±7 (0.276)	40.5 (1.594)														

A8	A8/Z1									
<p>A8: Attacco diretto sul cursore per cavo flessibile rinvio a distanza                      A8: Direct connection on spool for remote flexible control</p> 										
<p>A8/Z1: Versione con kit distanziale per il montaggio del cursore 116                      A8/Z1: Version with spacer kit for installation of spool 116</p> 										
										
<table border="1"> <thead> <tr> <th></th> <th>A</th> <th>Z</th> </tr> </thead> <tbody> <tr> <td>Q30 - GSV50</td> <td>73 (2.874)</td> <td>81.5 (3.209)</td> </tr> <tr> <td>Q80 - Q130</td> <td>77 (3.031)</td> <td>90.5 (3.563)</td> </tr> </tbody> </table>			A	Z	Q30 - GSV50	73 (2.874)	81.5 (3.209)	Q80 - Q130	77 (3.031)	90.5 (3.563)
	A	Z								
Q30 - GSV50	73 (2.874)	81.5 (3.209)								
Q80 - Q130	77 (3.031)	90.5 (3.563)								

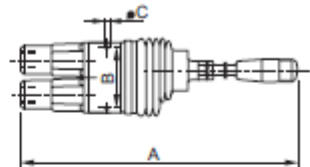
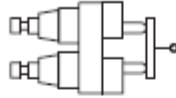
C1					
<p>Cavo flessibile                      Flexible cable</p> 					
					
					
<table border="1"> <thead> <tr> <th></th> <th>A</th> </tr> </thead> <tbody> <tr> <td>Q30 - GSV50</td> <td rowspan="2">                     Massima lunghezza cavo consigliata 4000 mm                      Raggio min. di curvatura 200mm                      Max. recommended length 4000 mm                      Minimum radius curve 200 mm                 </td> </tr> <tr> <td>Q80 - Q130</td> </tr> </tbody> </table>		A	Q30 - GSV50	Massima lunghezza cavo consigliata 4000 mm Raggio min. di curvatura 200mm Max. recommended length 4000 mm Minimum radius curve 200 mm	Q80 - Q130
	A				
Q30 - GSV50	Massima lunghezza cavo consigliata 4000 mm Raggio min. di curvatura 200mm Max. recommended length 4000 mm Minimum radius curve 200 mm				
Q80 - Q130					
<p>Dove è utilizzato il cavo flessibile C1, è necessario indicare la lunghezza del cavo espressa in mm.                      Esempio per un cavo lungo 1000 mm: A8-C1x1000-SL</p>					
<p>Indicate the cable length in mm when flexible cable C1 is used.                      E.g.: for a cable 1000 mm in length: A8-C1x1000-SL</p>					

SL																				
<p>Comando a distanza                      Remote control</p> 																				
																				
																				
<table border="1"> <thead> <tr> <th></th> <th>A</th> <th>B</th> <th>C</th> <th>d</th> <th>E</th> <th>F</th> </tr> </thead> <tbody> <tr> <td>Q30 - GSV50</td> <td>135 (5.315)</td> <td>26 (1.024)</td> <td>40 (1.575)</td> <td rowspan="2">M16x1.5</td> <td>38 (1.496)</td> <td>5.5 (0.217)</td> </tr> <tr> <td>Q80 - Q130</td> <td>172 (6.772)</td> <td>33.5 (1.319)</td> <td>45 (1.772)</td> <td>45 (1.772)</td> <td>6.5 (0.256)</td> </tr> </tbody> </table>		A	B	C	d	E	F	Q30 - GSV50	135 (5.315)	26 (1.024)	40 (1.575)	M16x1.5	38 (1.496)	5.5 (0.217)	Q80 - Q130	172 (6.772)	33.5 (1.319)	45 (1.772)	45 (1.772)	6.5 (0.256)
	A	B	C	d	E	F														
Q30 - GSV50	135 (5.315)	26 (1.024)	40 (1.575)	M16x1.5	38 (1.496)	5.5 (0.217)														
Q80 - Q130	172 (6.772)	33.5 (1.319)	45 (1.772)		45 (1.772)	6.5 (0.256)														

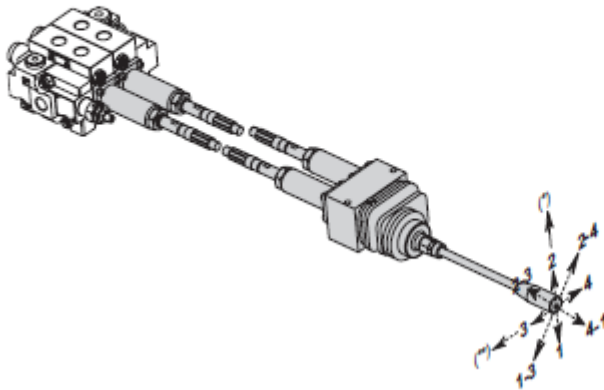
## Q80 Lever End Options continued...

### SLA15

Comando a cloche per controllo simultaneo di due cursori a distanza  
*Remote dual axis control for simultaneous operation of two spools*



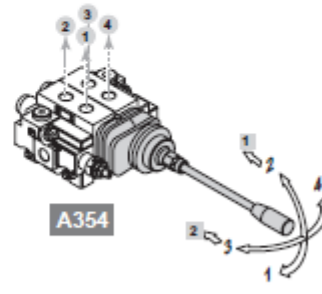
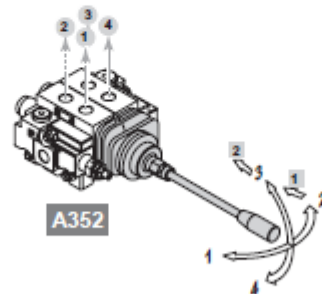
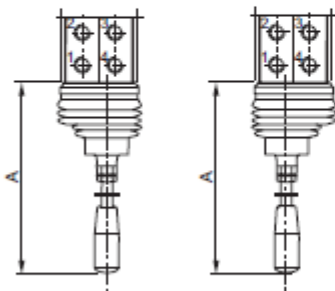
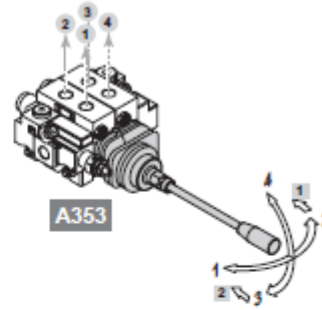
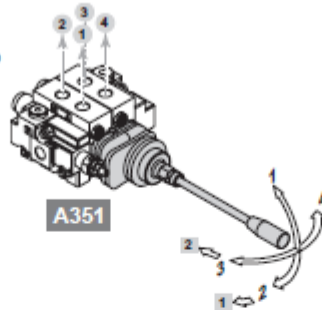
	A	B	Ø d
Q30 - GSV50	358	77	6.5
Q80 - Q130	(14.004)	(3.301)	(0.256)



### A35

Leva a cloche per il comando singolo o simultaneo di due cursori, come schema a lato  
*Dual axis for simultaneous or single control of two spools, as from the scheme on the side*

	A
Q30 - GSV50	280 (11.024)
Q80 - Q130	300 (11.811)



N.B. Nelle configurazioni A352 e A354, non è possibile montare le valvole antitubo.  
*Note: A352 - A354 configurations not permitted to mount cartridge valves.*

Eventuale cassetto con 4<sup>a</sup> pos. (solo cod.126)  
*Optional spool with 4<sup>th</sup> position (only code 126)*

- 1 su 1<sup>a</sup> sezione / on 1<sup>st</sup> section
- 2 su 2<sup>a</sup> sezione / on 2<sup>nd</sup> section



## Q80 Positioner End Options

### M1

Tre posizioni ritorno a molla in pos.0  
Three positions spring centred in 0



### M2

Due posizioni 0-1 ritorno a molla in pos.0  
Two positions spring 0-1 centred in 0



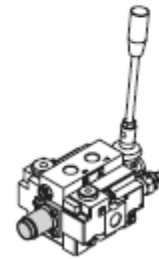
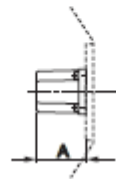
### M3

Due posizioni 0-2 ritorno a molla in pos.0  
Two positions spring 0-2 centred in 0



### M4 (1-2)

Due posizioni estreme ritorno a molla in pos.1  
Two end positions spring back in 1



	A			
	M1	M2	M3	M4 1-1
Q30 - GSV50	42 (1.054)	42 (1.054)	42 (1.054)	42 (1.054)
Q80 - Q130	55 (2.165)	55 (2.165)	55 (2.165)	55 (2.165)

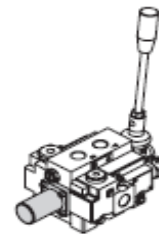
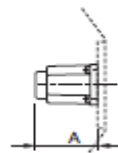
### R1

Tre posizioni ritorno a molla in pos.0,  
detent in pos.1  
Three positions spring centred in 0,  
detent in 1



### R2

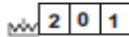
Tre posizioni ritorno a molla in pos.0,  
detent in pos.2  
Three positions spring centred in 0,  
detent in 2



	A	
	R1	R2
Q30 - GSV50	52 (2.047)	54 (2.120)
Q80 - Q130	70 (2.750)	68.5 (2.697)

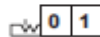
### R3

Tre posizioni in detent  
Three positions detent



### R4

Due posizioni in detent 0-1  
Two positions detent 0-1



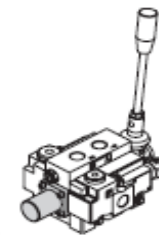
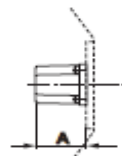
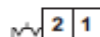
### R5

Due posizioni in detent 0-2  
Two positions detent 0-2



### R6

Due posizioni in detent 1-2  
Two positions detent 1-2

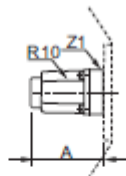


	A			
	R3	R4	R5	R6
Q30 - GSV50	42 (1.054)	42 (1.054)	42 (1.054)	42 (1.054)
Q80 - Q130	55 (2.165)	55 (2.165)	55 (2.165)	55 (2.165)

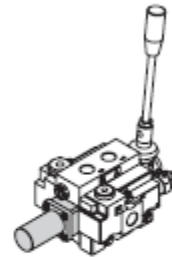
## Q80 Positioner End Options continued...

### R10/Z1

Due posizioni (1 e 2) con ritorno a molla in pos. 0.  
 (3) 4ª posizione flottante con detent.  
 (Da montare cursore 126)  
 Two positions (1 and 2) with spring  
 return centred in 0 position  
 (3) 4th position floating with detent.  
 (Mounting with spool 126)

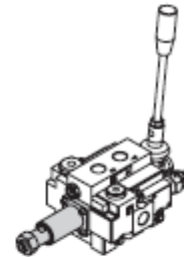
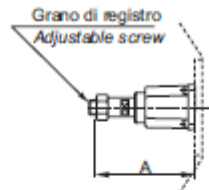
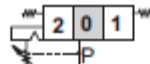


	A
Q30 - GSV50	70 (2.750)
Q80	92 (3.622)



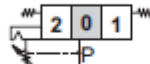
### R1K

Comando a 3 posizioni, detent in pos. 1  
 con sgancio automatico registrabile.  
 Disponibile solo con cursore cod. 103 e 111  
 3 Position control, detent in 1 pos.  
 with automatic adjustable release.  
 Available with spool code 103 and 111 only



### R2K

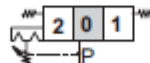
Comando a 3 posizioni, detent in pos. 2  
 con sgancio automatico registrabile.  
 Disponibile solo con cursore cod. 103 e 111  
 3 Position control, detent in 2 pos.  
 with automatic adjustable release.  
 Available with spool code 103 and 111 only



	A		
	R1K	R2K	R3K
Q30 - GSV50	91.5 (3.602)	91.5 (3.602)	91.5 (3.602)
Q80 - Q130	106 (4.173)	106 (4.173)	106 (4.173)

### R3K

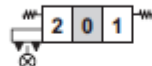
Comando a 3 posizioni, detent in pos. 1 e 2  
 con sgancio automatico registrabile.  
 Disponibile solo con cursore cod. 103 e 111  
 3 Position control, detent in 1 and 2 pos.  
 with automatic adjustable release.  
 Available with spool code 103 and 111 only



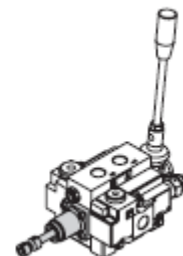
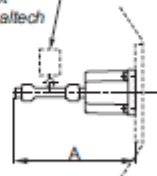
Campo di taratura della pressione per lo sgancio automatico 45 - 350 bar (653 - 5075 PSI)  
 Pressure calibration field for automatic release 45 - 350 bar (653 - 5075 PSI)

### M1-B1

Tre posizioni ritorno a molla in pos.0  
 con comando microswitch posteriore  
 Three positions spring centred in 0  
 with back microswitch control



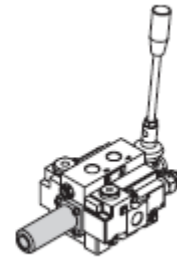
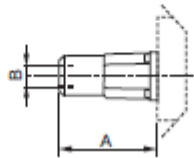
Microswitch non di  
 nostra fornitura  
 Microswitch not  
 supplied by Galtech



## Q80 Positioner End Options continued...

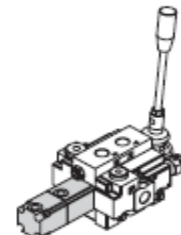
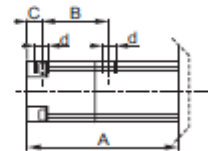
### M1-U2

Tre posizioni con ritorno a molla in pos. 0,  
attacco diretto sul cursore  
per rinvio a distanza con cavo flessibile  
*Three positions spring centred in 0,  
direct control connection on spool,  
cap side, for flexible remote control*



### P1-N

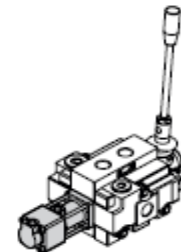
Comando pneumatico a tre  
posizioni con ritorno in pos. 0  
*Three positions pneumatic control  
spring centred in 0*



Q30-GSV50 Supporto del comando in Alluminio  
*Q30-GSV50 Command support in aluminium*  
Q80-Q130 Supporto del comando in tecnopolimero  
*Q80-Q130 Command support in technopolymer*

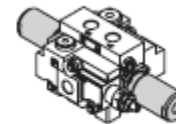
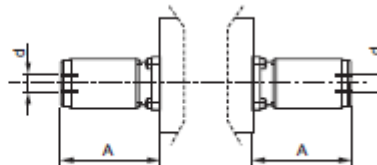
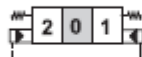
	A	B	C	d
Q30 - GSV50	90.5 (3.563)	43 (1.693)	10 (0.394)	G 1/8"
Q80 - Q130	107 (4.213)	48 (1.890)	10.5 (0.413)	

Pressione di pilotaggio / Pilot pressure	Min.	5 bar (72.5 PSI)
	Max.	30 bar (435 PSI)
Volume pilotaggio / Pilot volume	Q30 - GSV50	4 cm <sup>3</sup> (0.244 in <sup>3</sup> )
	Q80 - Q130	9 cm <sup>3</sup> (0.549 in <sup>3</sup> )



### H1

Comando idraulico ad alta  
pressione ON-OFF a tre posizioni,  
ritorno a molla in posizione 0  
*Three positions whit high-pressure  
hydraulic control, spring centred  
in 0 position*



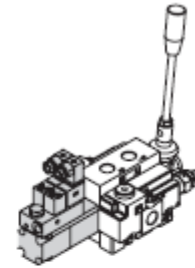
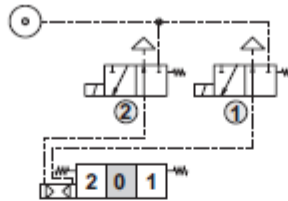
	A	d
Q30 - GSV50	70 (2.750)	G 1/4
Q80 - Q130	85 (3.340)	

Pressione di pilotaggio / Pilot pressure	Min.	16 bar (232 PSI)
	Max.	350 bar (5075 PSI)
Volume pilotaggio / Pilot volume	Q30 - GSV50	2 cm <sup>3</sup> (0.122 in <sup>3</sup> )
	Q80-Q130	3 cm <sup>3</sup> (0.183 in <sup>3</sup> )

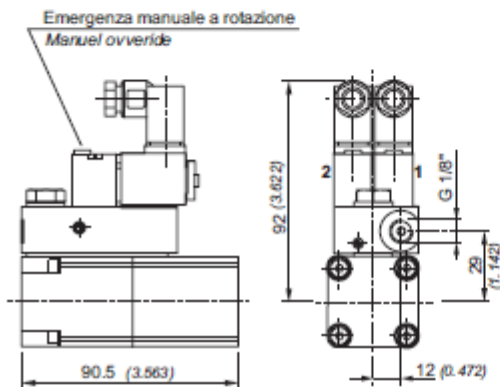
## Q80 Positioner End Options continued...

**D3**

Comando elettropneumatico a tre posizioni con ritorno in pos. 0  
Three positions electro-pneumatic control spring centred in 0



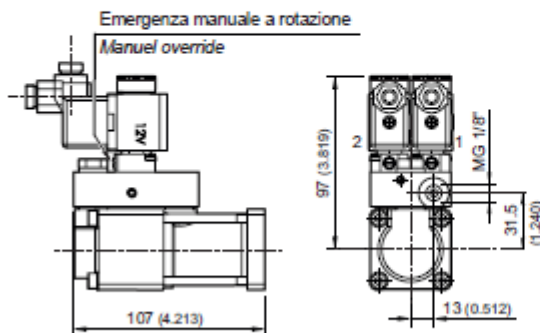
Q30-GSV50 Supporto del comando in Alluminio  
Q30-GSV50 Command support in aluminium



**Q30 - GSV50**

Caratteristiche di funzionamento Operation characteristics	
Pressione di pilotaggio Pilot pressure	1 ÷ 10 bar (14.5 - 145 PSI)
Volume pilotaggio Pilot volume	27NI/ a 6 bar Δpl (27NI/ a 87 PSI Δpl)
Caratteristiche tecniche elettromagnete Electromagnet characteristics	
Tipo attacco magnete Magnet connection type	DIN 175301-803-C
Tipo di protezione Protection type	IP 65
Classe d'isolamento Coil insulation class	F
Tensione di alimentazione Supply voltage	D.C.: 12, 24V A.C.: 50 Hz 230 V
Variazione di tensione max. Maximum voltage tolerance	± 10%
Potenza assorbita Absorbed power supply	D.C.: 2.9 W A.C. 4VA
Rapporto di max. utilizzo Maximum utilization ratio	100%
Temperatura max. Max. temperature	-10 ÷ 50 °C

Q80-Q130 Supporto del comando in tecnopolimero  
Q80-Q130 Command support in technopolimer



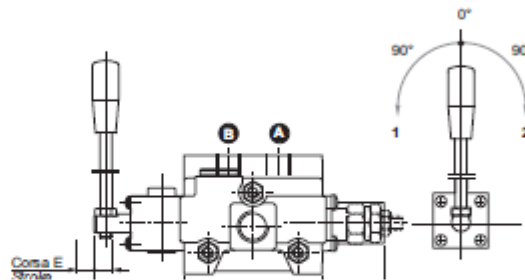
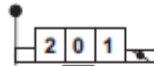
**Q80 - Q130**

Caratteristiche di funzionamento Operation characteristics	
Pressione di pilotaggio Pilot pressure	1 ÷ 10 bar (14.5 - 145 PSI)
Volume pilotaggio Pilot volume	53NI/ a 6 bar Δpl (53NI/ a 87 PSI Δpl)
Caratteristiche tecniche elettromagnete Electromagnet characteristics	
Tipo attacco magnete Magnet connection type	DIN 43650
Tipo di protezione Protection type	IP 65
Classe d'isolamento Coil insulation class	F
Tensione di alimentazione Supply voltage	D.C.: 12, 24V
Variazione di tensione max. Maximum voltage tolerance	± 10%
Potenza assorbita Absorbed power supply	D.C.: 5 W
Rapporto di max. utilizzo Maximum utilization ratio	100%
Temperatura max. Max. temperature	-10 ÷ 50 °C

## Q80 Positioner End Options continued...

### RTL-s

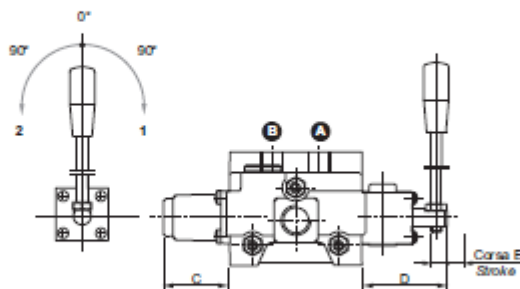
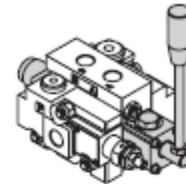
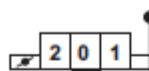
Tre posizioni con comando rotativo frizionato, tacca in pos. 0, leva in pos. 2  
 Three positions with rotary control, lever in 2 position



	C	D	E
Q30 - GSV50	42 (1.654)	61 (2.402)	10 (5+5) 0.304 (0.197+0.197)
Q80 - Q130	55 (2.165)	72.5 (2.854)	14 (7+7) 0.551 (0.276+ 0.276)

### RTL-d

Tre posizioni con comando rotativo frizionato, tacca in pos. 0, leva in pos. 1  
 Three positions with duced rotary control, lever in 1 position

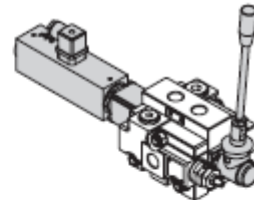


	C	D	E
Q30 - GSV50	42 (1.654)	61 (2.402)	10 (5+5) 0.304 (0.197+0.197)
Q80 - Q130	55 (2.165)	72.5 (2.854)	14 (7+7) 0.551 (0.276+ 0.276)

## Q80 Positioner End Options continued...

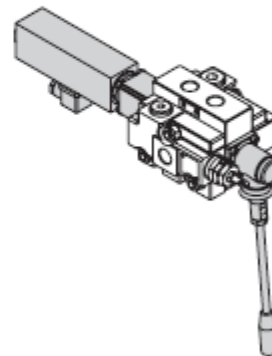
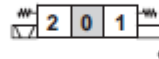
### A1/D41

Comando elettrico diretto doppio e ritorno a molla in posizione 0  
 Double direct electrical control with spring centred in 0

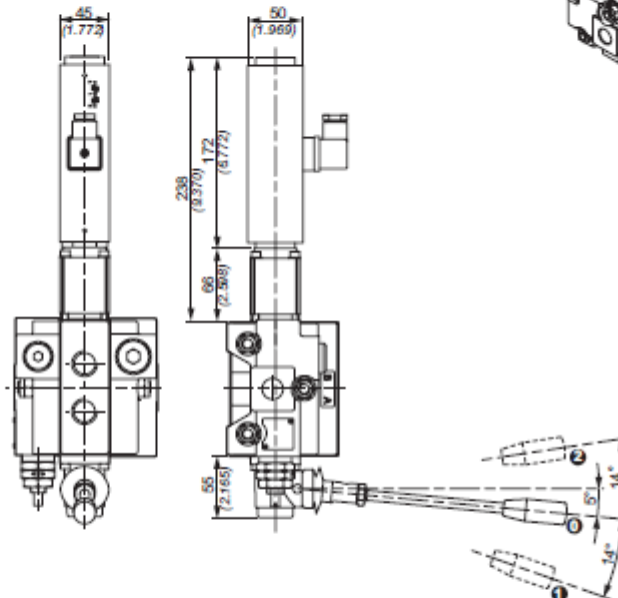


### A2/D41

Comando elettrico diretto doppio ON/OFF ruotato di 180° e ritorno a molla in posizione 0  
 180° rotated ON/OFF double direct electrical control with spring centred in 0



Connessione Connection		
	1 - 2	Effetto A Port A
	1 - 3	Effetto B Port B



Dimensioni in / Dimensions in: mm (Inch)

Caratteristiche tecniche elettromagnete / Electromagnet technical features	
Tipo distributore / Valve type	Q80
Attacco magnete / Magnet connection	Tipo/Type DIN 43650 (vers. A)
Tipo protezione / Protection type	IP65
Classe d'isolamento / Coil insulation class	H
Tensione di alimentazione / Supply voltage	12V D.C./24V D.C.
Variazione di tensione max / Maximum voltage tolerance	±10%
Potenza assorbita / Absorbed power supply	80W
Rapporto di massimo utilizzo / Maximum utilization ratio	100%
Caratteristiche tecniche distributore / Directional control valve characteristics	
Portata max (l/min) / Max. flow (Gal/min)	90 (24)
Pressione max di lavoro / Max. working pressure	300 bar
Contropressione max sullo scarico / Max. back outlet pressure	25 bar
Manovra di emergenza o in assenza di corrente / Emergency operation or in case of power failure	Con leva / With lever
Trafilamento max di A e B in T a 100 bar con viscosità 35 mm <sup>2</sup> /s Max. spool leakage of A and B ports to T port at 1450 bar with viscosity 35 mm <sup>2</sup> /s	5 cm <sup>3</sup> /min

## Q80 Positioner End Options continued...

DISTRIBUTORI COMPONIBILI

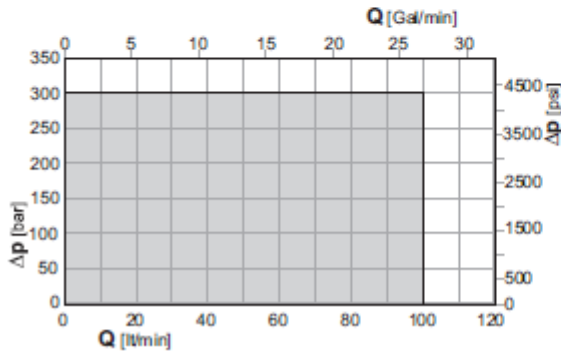


SECTIONAL DIRECTIONAL CONTROL VALVES

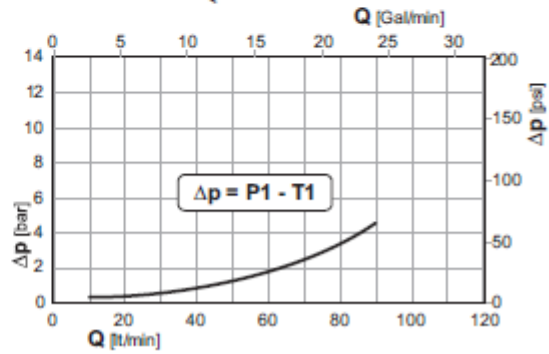
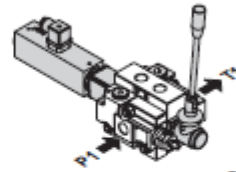
Sezione di lavoro e/o elemento intermedio

Working section and/or intermediate section

Limiti d'impiego / Use limits

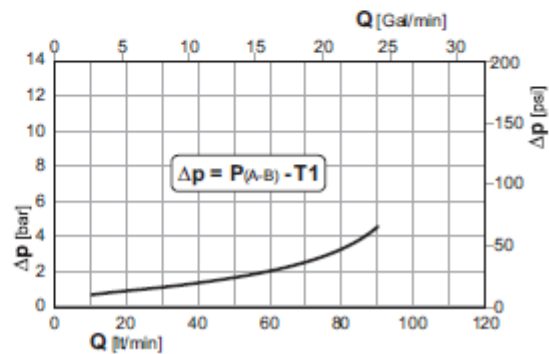
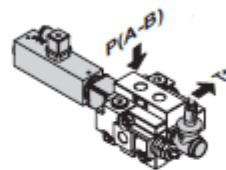
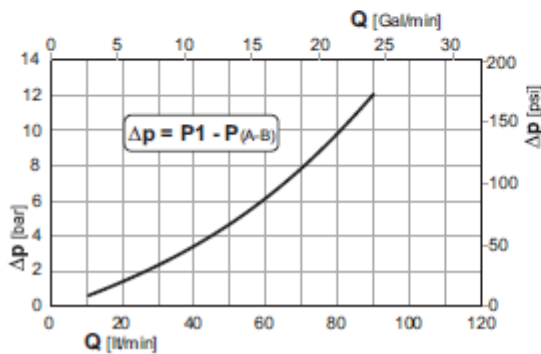
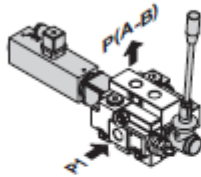


Perdite di carico con il cursore in posizione neutra  
( $\Delta p$  in funzione del numero di sezioni attraversate)  
Pressure drop with spool in neutral position  
( $\Delta p$  depending on the number of the crossed sections)



Perdite di carico con il cursore in posizione di lavoro  
( $\Delta p$  in funzione del numero di sezioni attraversate)

Pressure drop with spool in working position  
( $\Delta p$  depending on the number of the crossed sections)



## Q80 Section Valve Options

<b>VC</b>	<p>Tappo di chiusura per corpo distributore predisposto per valvole antiurto e/o anticavitazione. <i>Closing plug for directional control valve body preset for shock and/or anticavitation valves.</i></p>	
<b>V30</b>	<p>Valvola limitatrice di pressione (o antiurto), registrabile, su effetto A (per le tarature vedere pagina seguente). <i>Pressure limiting valve (or antishock), adjustable, on A port (for the setting see next page).</i></p>	
<b>V31</b>	<p>Valvola limitatrice di pressione (o antiurto), registrabile, su effetto B (per le tarature vedere pagina seguente). <i>Pressure limiting valve (or antishock), adjustable, on B port (for the setting see next page).</i></p>	
<b>V35</b>	<p>Valvola limitatrice di pressione (o antiurto), registrabile, con anticavitazione, su effetto A e B (per le tarature vedere par. 11). <i>Pressure limiting valve (or antishock), adjustable, with anticavitation, on A and B port (for the setting see par. 11).</i></p>	
<b>V40</b>	<p>Valvola limitatrice di pressione (o antiurto), registrabile su effetto A e anticavitazione su effetto B (per le tarature vedere par. 11). <i>Pressure limiting valve (or antishock), adjustable on A port and anticavitation on B port (for the setting see par. 11).</i></p>	
<b>V41</b>	<p>Valvola anticavitazione su effetto A e valvola limitatrice di pressione (o antiurto), registrabile su effetto B (per le tarature vedere par. 11). <i>Anticavitation valve on A port and pressure limiting valve (or antishock), adjustable on B port (for the setting see par. 11).</i></p>	
<b>V32</b>	<p>Valvola limitatrice di pressione (o antiurto), registrabile, su effetto A e B (per le tarature vedere pagina seguente). <i>Pressure limiting valve (or antishock), adjustable, on A and B port (for the setting see next page).</i></p>	
<b>V33</b>	<p>Valvola limitatrice di pressione (o antiurto), registrabile, con anticavitazione, su effetto A (per le tarature vedere pagina seguente). <i>Pressure limiting valve (or antishock), adjustable, with anticavitation, on A port (for the setting see next page).</i></p>	
<b>V34</b>	<p>Valvola limitatrice di pressione (o antiurto), registrabile, con anticavitazione, su effetto B (per le tarature vedere pagina seguente). <i>Pressure limiting valve (or antishock), adjustable, with anticavitation, on B port (for the setting see next page).</i></p>	
<b>V04</b>	<p>Valvola anticavitazione su effetto A. <i>Anticavitation valve on A port.</i></p>	
<b>V05</b>	<p>Valvola anticavitazione su effetto B. <i>Anticavitation valve on B port.</i></p>	
<b>V06</b>	<p>Valvola anticavitazione doppia su effetti A e B. <i>Anticavitation valve, double-acting on A and B ports.</i></p>	

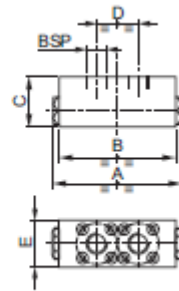
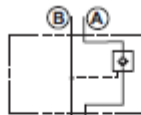
		molla bianca white spring	molla nera black spring	molla rossa red spring	
R	Tipo di molla per la VLP <i>Type of spring for relief valve</i>	B	N	R	
Campi di taratura / Calibration fields					
		bar (psi)			
250	Taratura della VLP <i>VLP Setting</i>	Q30 - GSV50	50 ÷ 80 (435 ÷ 1100)	81 ÷ 200 (1175 ÷ 2900)	201 ÷ 350 (4365 ÷ 5800)
		Q80	30 ÷ 80 (435 ÷ 1100)	81 ÷ 200 (1175 ÷ 2900)	201 ÷ 370 (2015 ÷ 5305)



## Q80 Section Valve Options continued...

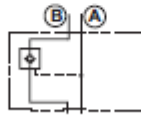
### V01

Valvola di ritegno pilotata singola su effetto A (\*).  
Single piloted check valve on A port (\*).



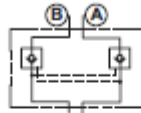
### V02

Valvola di ritegno pilotata singola su effetto B (\*).  
Single piloted check valve on B port (\*).



### V03

Valvola di ritegno pilotata singola su  
effetti A e B (\*).  
Single piloted check valve on A and B ports (\*).



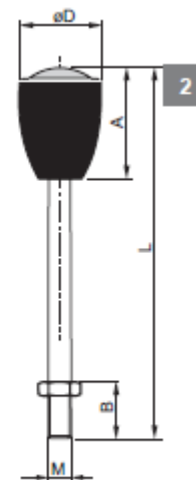
	A	B	C	D	E	BSP
Q30	105 (4.134)	95 (3.740)	41 (1.614)	34 (1.339)	37.5 (1.476)	3/8"
Q80	130 (5.118)	122 (4.803)	50 (1.969)	43 (1.693)	45 (1.772)	1/2"
Q130	173 (6.811)	165 (6.496)	65 (2.559)	78 (2.992)	47 (1.850)	3/4"

	* Rapporto di pilotaggio Piloting ratio	Coppia di serraggio delle viti di fissaggio Fastening screw tightening
Q30	1 : 2.42	8 Nm 2 Nm - solo per viti VFE / only for VFE screws
Q80	1 : 3.25	10 Nm

Q80 - Q130								
06.029.27013	1	Standard / Standard	M10	209 (8.228)	20 (0.787)	57 (2.244)	28 (1.102)	Nero / Black
06.029.28148	1	Lunga / Long version	M10	357 (14.055)	20 (0.787)	57 (2.244)	28 (1.102)	Nero / Black
06.029.27344	1	Corta / Short version	M10	154 (6.063)	20 (0.787)	57 (2.244)	28 (1.102)	Nero / Black
06.029.27635	1	Extra corta / Extra-short	M10	66 (2.598)	26 (1.024)	42 (1.654)	22 (0.866)	Nero / Black
06.029.29866	2	Standard con oblo' Standard with lens	M10	219 (8.622)	32 (1.260)	46 (1.811)	28 (1.102)	Nero / Black
06.029.30295	2	Lunga con oblo' Long with lens	M10	367 (14.449)	32 (1.260)	46 (1.811)	28 (1.102)	Nero / Black

Per comando elettrico / For electric control Q30 - GSV50 - (Q50)								
06.029.28945	1	Standard / Standard	Ø7	133 (5.236)	20 (0.787)	57 (2.244)	15 (0.591)	Nero / Black
06.029.29349	1	Lunga / Long version	Ø7	201 (7.913)	20 (0.787)	57 (2.244)	15 (0.591)	Nero / Black
06.029.30951	2	Standard con oblo' Standard with lens	Ø7	143 (5.630)	32 (1.260)	46 (1.811)	15 (0.591)	Nero / Black

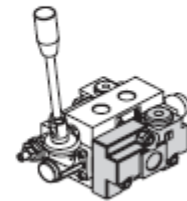
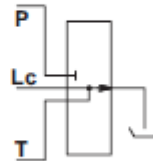
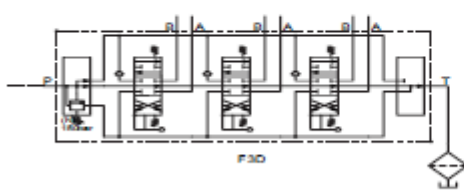
Dimensioni in / Dimensions in: mm (inch)



## Q80 Outlet Sections

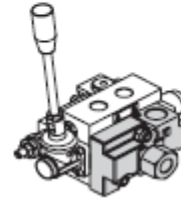
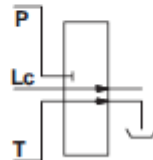
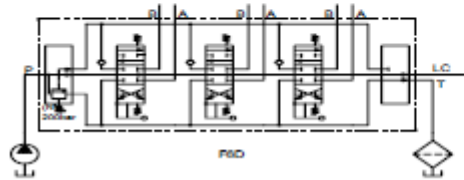
### F3D

Fiancata di scarico  
Outlet section



### F6D

Fiancata di scarico con alimentazione in pressione per altri componenti (carry-over)  
Outlet section and high pressure (carry-over)



### F16D

Fiancata di scarico destro per centro chiuso  
Right outlet section for through passage closed

