

LONCIN PETROL ENGINE HYDRAULIC PUMP SET

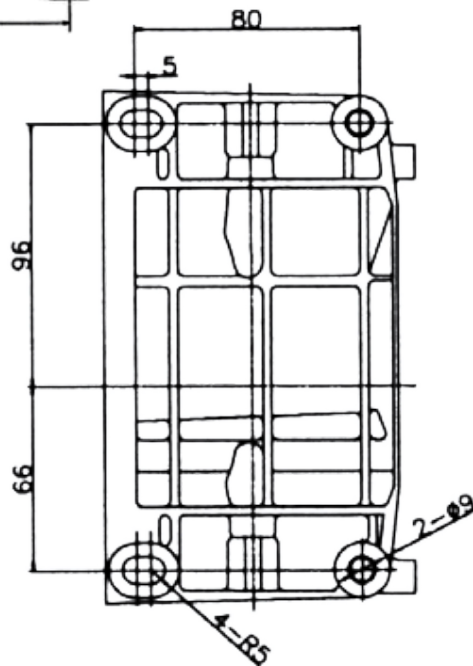
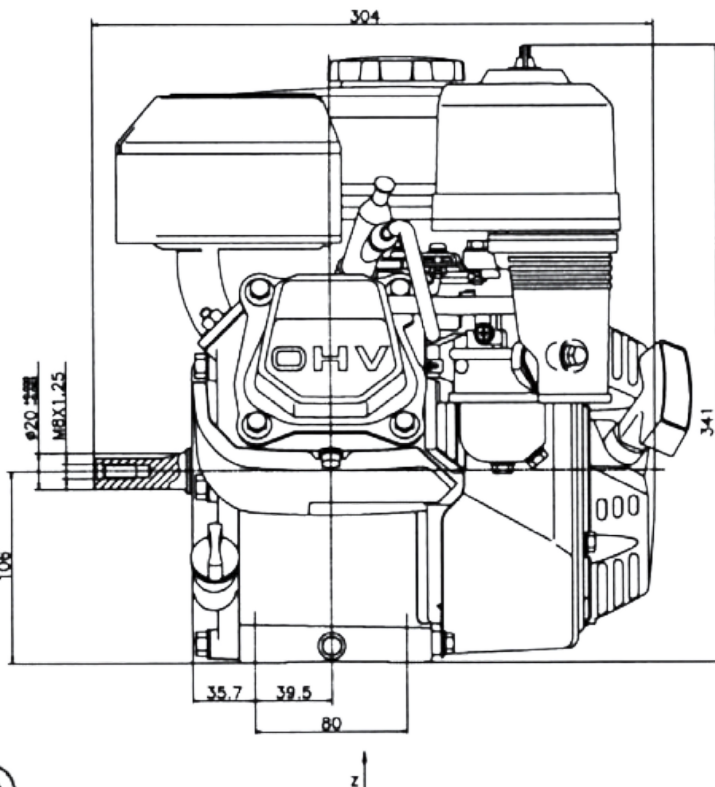
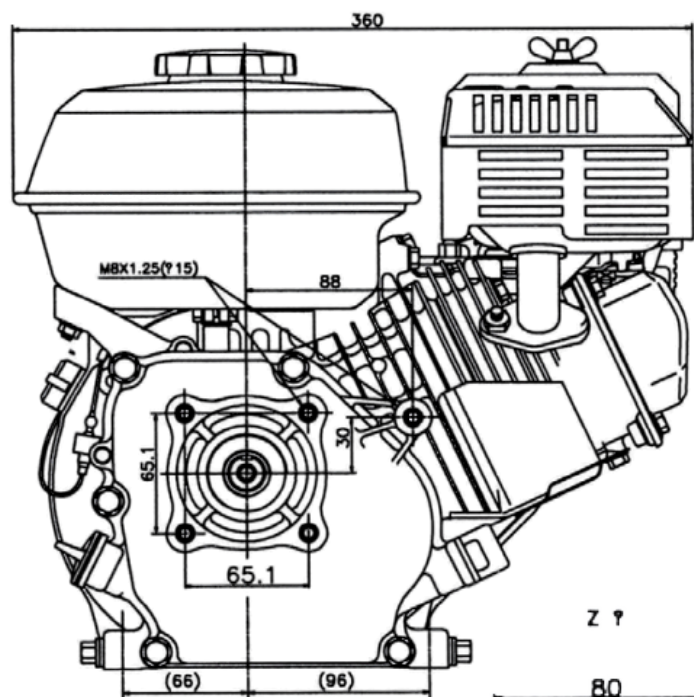
An engine pump set is a self-contained unit that consists of an engine coupled with a pump. This combination provides a portable and independent source of power for pumping fluids, making it useful in various applications where electric power is unavailable or impractical.



INCLUDES

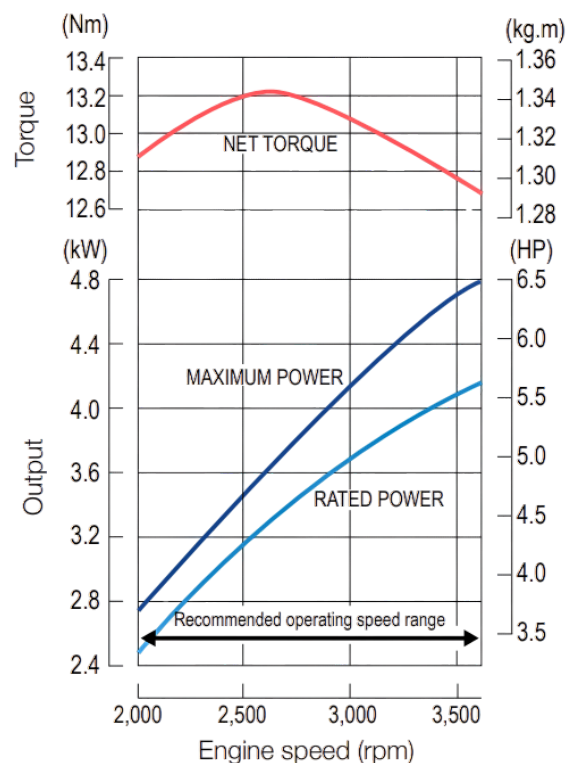
- Loncin Engine
- Gear Pump
- Italian OMT Bell Housing and Drive Coupling Set

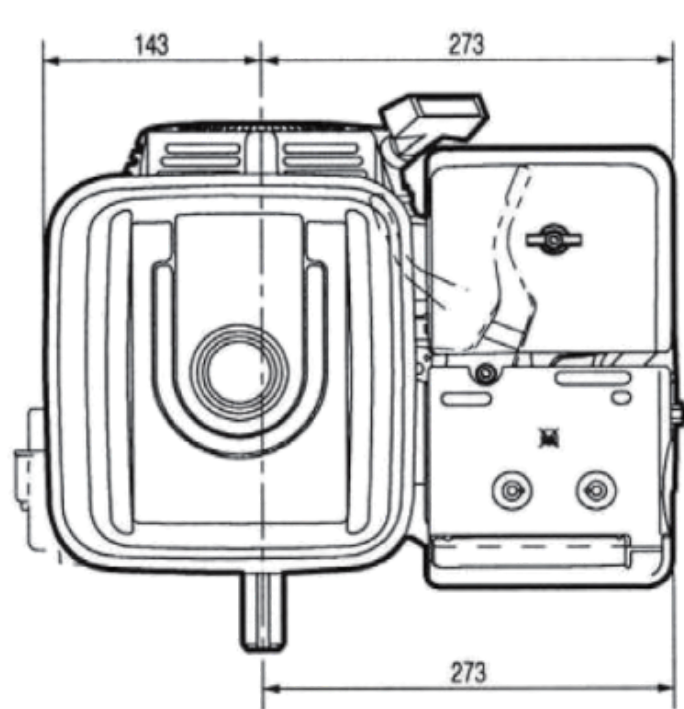
PART NO.	FLOW L/MIN	PRESSURE PSI	PUMP CC	PUMP MODEL	ENGINE HP	ENGINE MODEL
ZZ000139	11.5	3045	3.2	VNKB010004B	6.5	G200
ZZ000142	19.5	2537	6.0	VNKB0202002B	9	G270
ZZ000144	24	3000	8.0	VNKB0202003B	13	G390
ZZ018324	33	3190	11.2	1GP20012373	24	LC2V80FD5



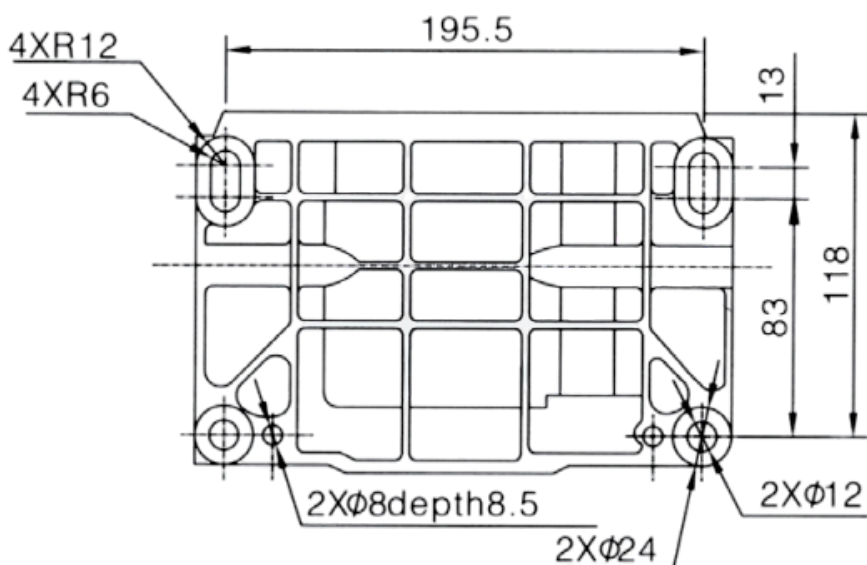
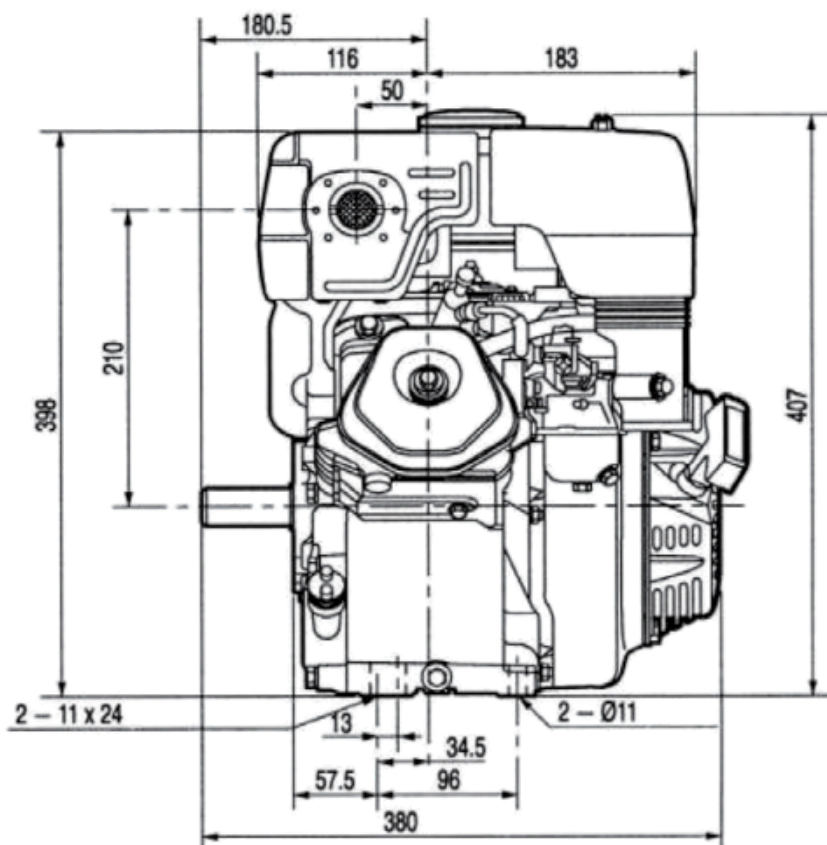
ENGINE TYPE	Single cylinder, 4-stroke, OHV, forced air cooling
NET POWER (HP / KW)	5.5 / 4.1 @ 3600 r/min
GROSS POWER (HP / KW)	6.5 / 4.85 @ 3600 r/min
NET TORQUE (NM)	12.4 @ 2500 r/min
BORE X STROKE (MM)	68 x 54
DISPLACEMENT (CC)	196
COMPRESSION RATIO	8.5 : 1

OIL CAPACITY (L)	0.6
FUEL CONSUMPTION (G/KW H)	≤ 395
OIL CONSUMPTION (G/KW H)	≤ 6.8
IDLE SPEED	1450 ± 150
STARTING SYSTEM	Recoil / Electric start optional
NOISE (≤ 7M)	70dBA
DIMENSIONS (L X W X H MM)	376 x 312 x 335



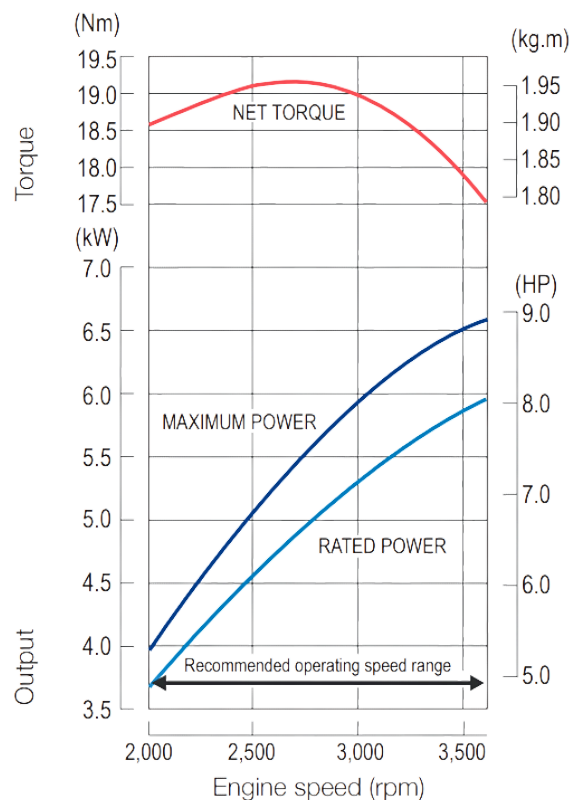


A View

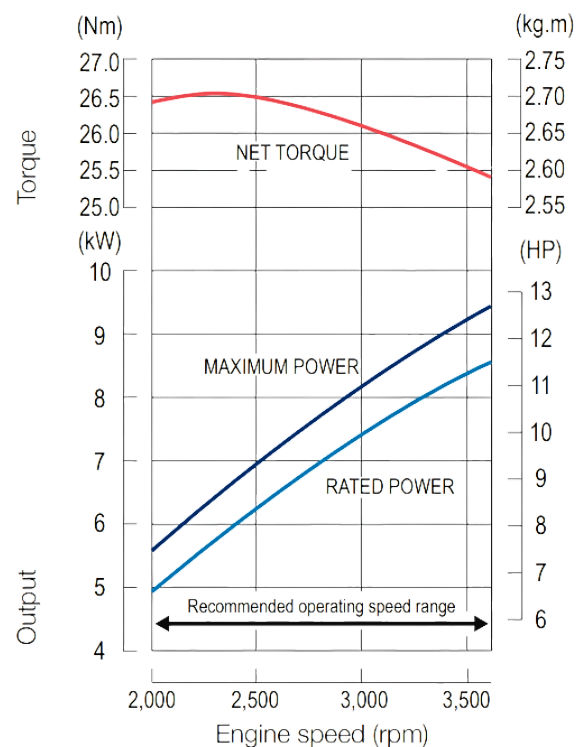
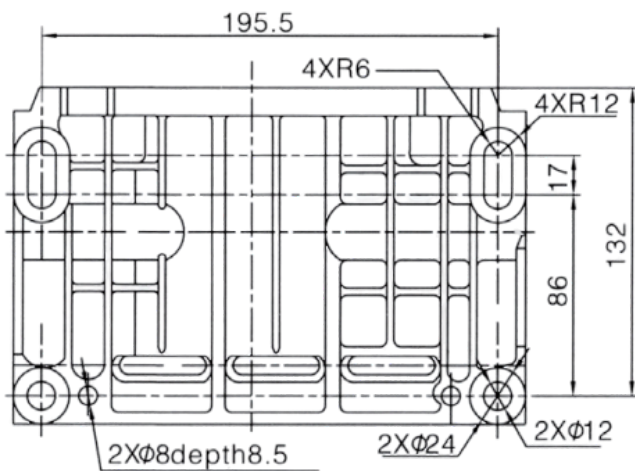
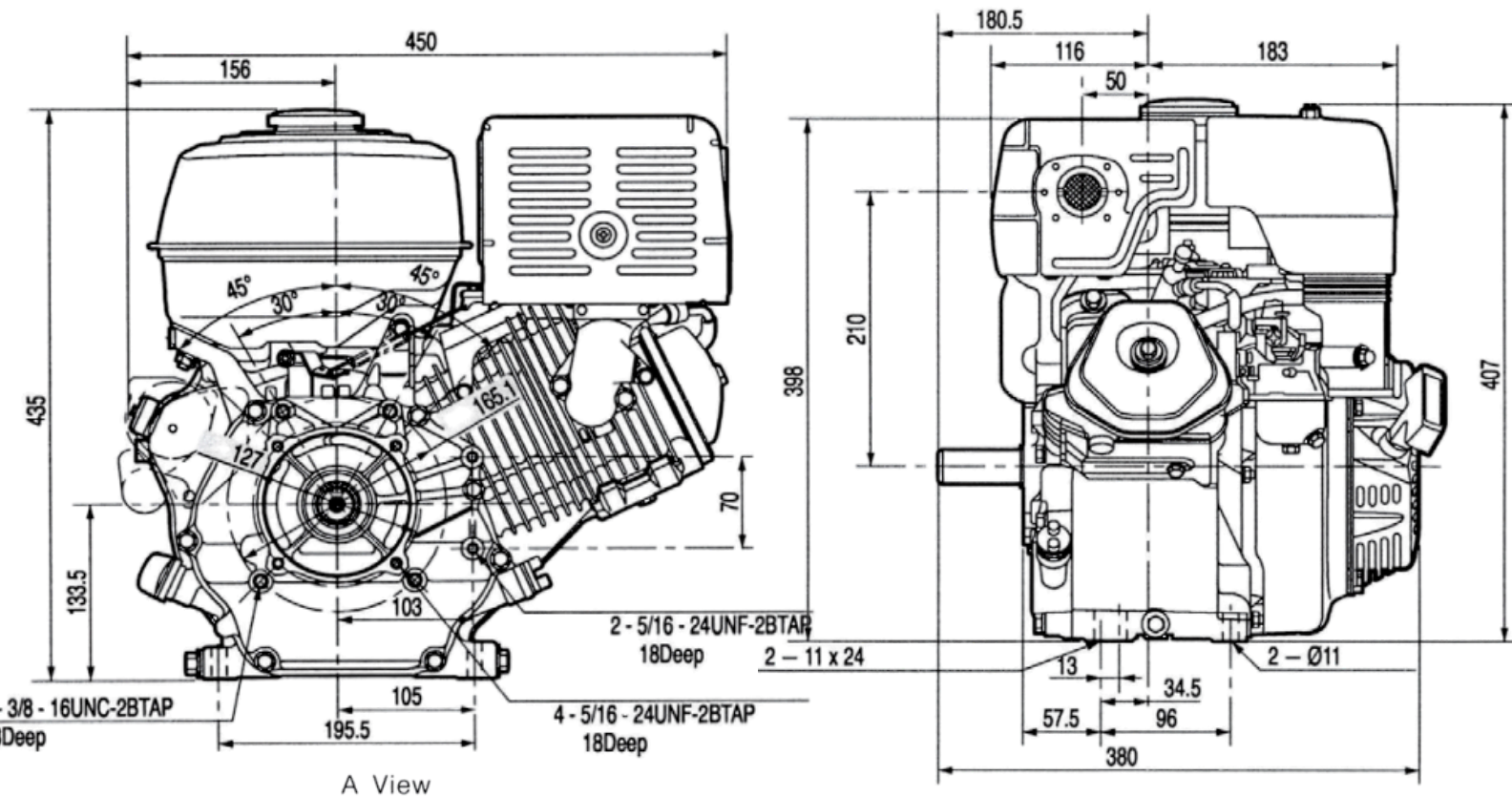


ENGINE TYPE	Single cylinder, 4-stroke, OHV, forced air cooling
NET POWER (HP / KW)	8.0 / 6.0 @ 3600 r/min
GROSS POWER (HP / KW)	9.0 / 6.7 @ 3600 r/min
NET TORQUE (NM)	16.3 @ 2500 r/min
BORE X STROKE (MM)	77 x 58
DISPLACEMENT (CC)	270
COMPRESSION RATIO	8.1:1

OIL CAPACITY (L)	0.95
FUEL CONSUMPTION (G/KW H)	≤ 374
OIL CONSUMPTION (G/KW H)	≤ 6.8
IDLE SPEED	1450 ± 150
STARTING SYSTEM	Recoil / Electric start optional
NOISE (≤ 7M)	70dBA
DIMENSIONS (L X W X H MM)	430 x 380 x 410

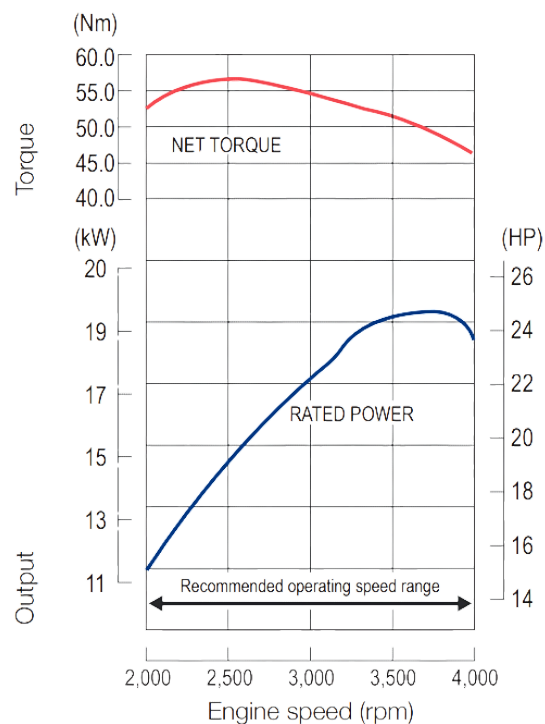
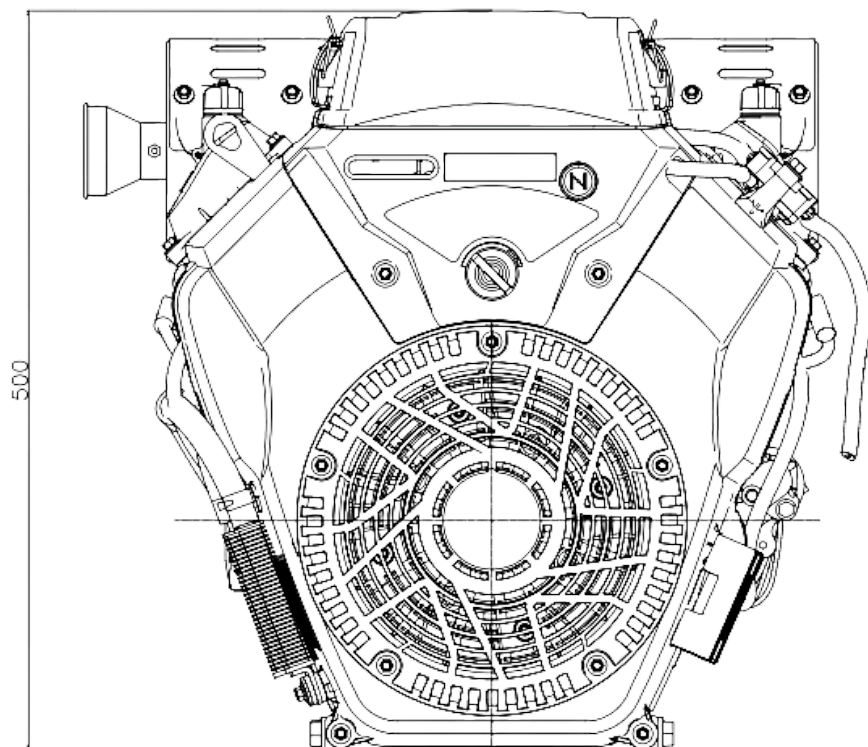


G390 DIMENSIONS



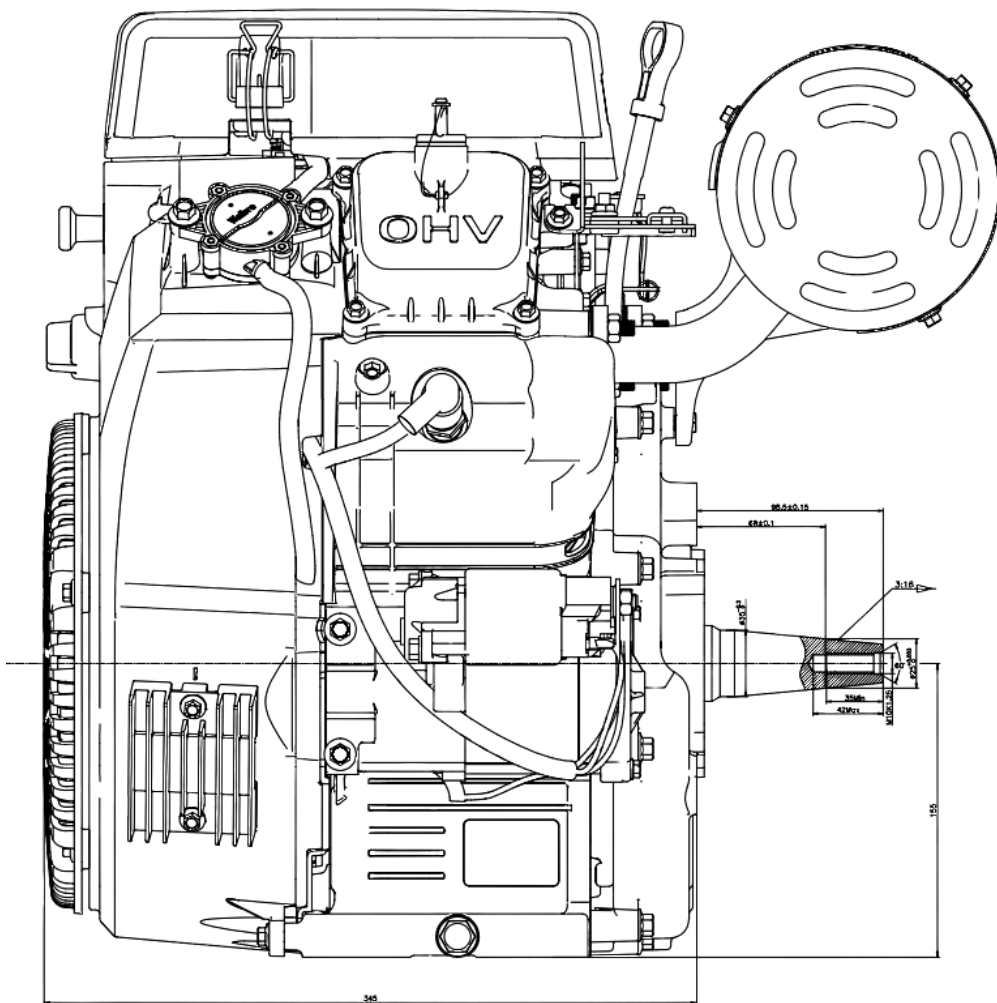
ENGINE TYPE	Single cylinder, 4-stroke, OHV, forced air cooling
NET POWER (HP / KW)	11 / 8.2 @ 3600 r/min
GROSS POWER (HP / KW)	13 / 9.7 @ 3600 r/min
NET TORQUE (NM)	25.1 @ 2500 r/min
BORE X STROKE (MM)	88 x 64
DISPLACEMENT (CC)	389
COMPRESSION RATIO	8 : 1

OIL CAPACITY (L)	1.1
FUEL CONSUMPTION (G/KW H)	≤ 374
OIL CONSUMPTION (G/KW H)	≤ 6.8
IDLE SPEED	1450 ± 150
STARTING SYSTEM	Recoil / Electric start optional
NOISE (≤ 7M)	70dBA
DIMENSIONS (L X W X H MM)	450 x 405 x 443

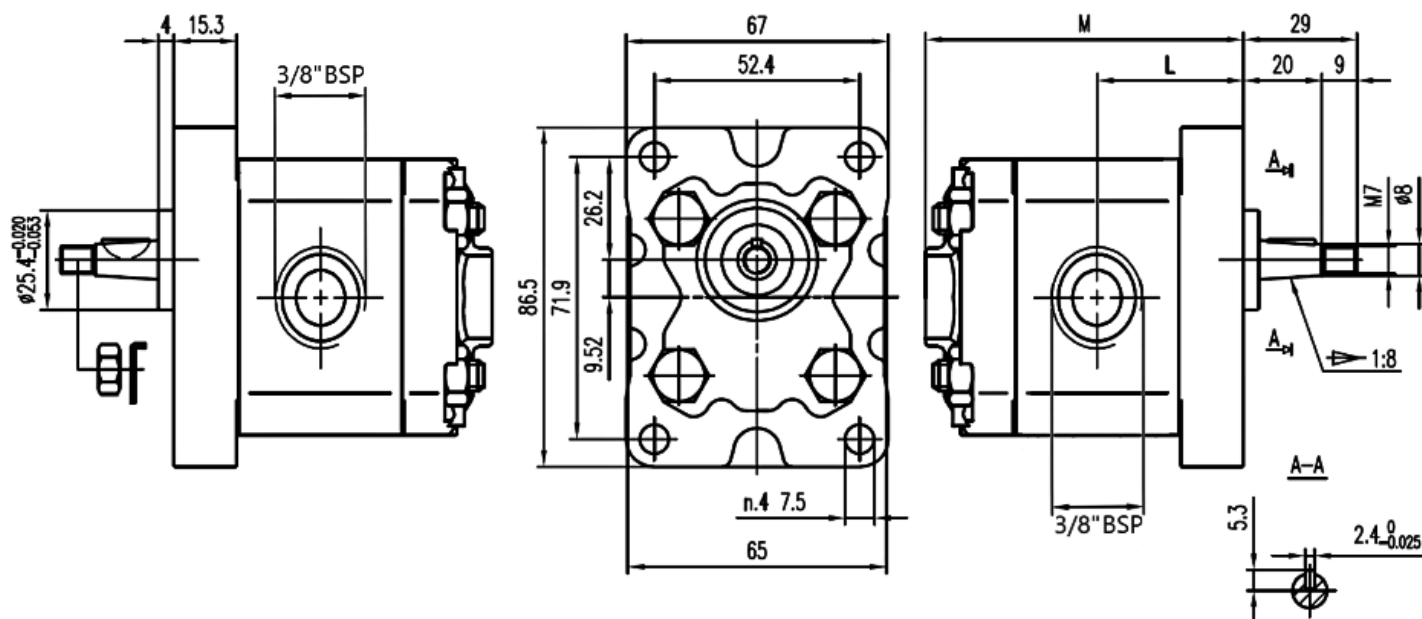


ENGINE TYPE	V-Twin, 4-stroke, OHV, forced air cooling
NET POWER (HP / KW)	24.1 / 19 @ 3600 r/min
GROSS POWER (HP / KW)	-
NET TORQUE (NM)	52 @ 2800 r/min
BORE X STROKE (MM)	80 x 76
DISPLACEMENT (CC)	764
COMPRESSION RATIO	8.5 : 1

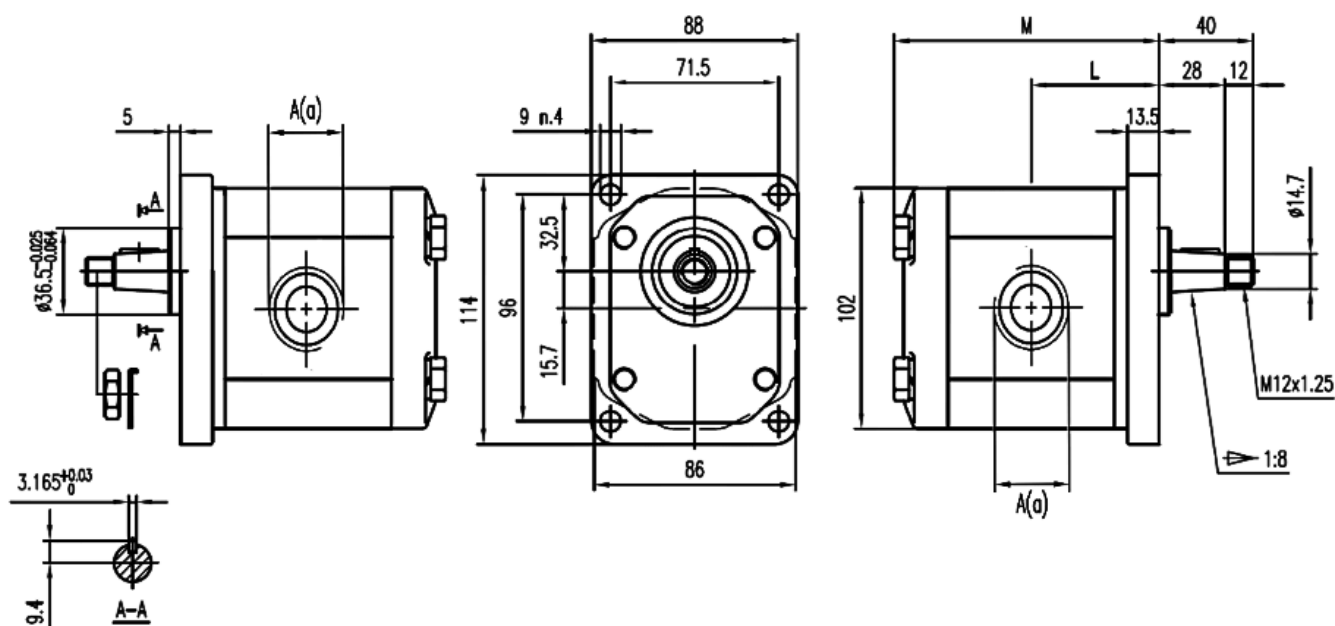
OIL CAPACITY (L)	1.8
FUEL CONSUMPTION (G/KW H)	≤ 360
OIL CONSUMPTION (G/KW H)	-
IDLE SPEED	1500 ± 150
STARTING SYSTEM	Electric
NOISE (≤ 7M)	-
DIMENSIONS (L X W X H MM)	507 x 552 x 500



GEAR PUMP DIMENSIONS

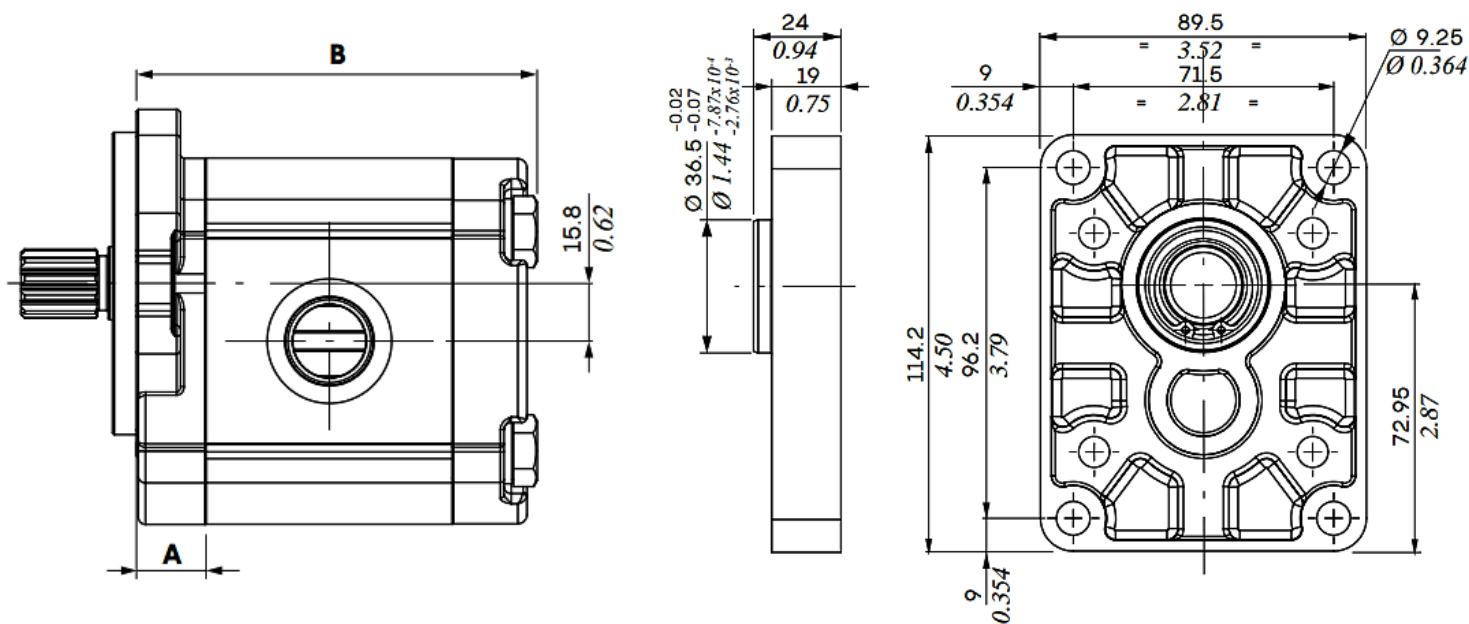


PART NUMBER	DISPLACEMENT [cm ³ /rev]	GROUP	DIMENSIONS	
			M MM	L MM
VNKB010004B	3.2	1	82	37



PART NUMBER	DISPLACEMENT [cm ³ /rev]	GROUP	DIMENSIONS	
			M MM	L MM
VNKB0202002B	6.0	2	96	46
VNKB0202003B	8.0	2	99.3	47.7
1GP20012373	11.2	2	19 (0.75)	104.7 (4.12)

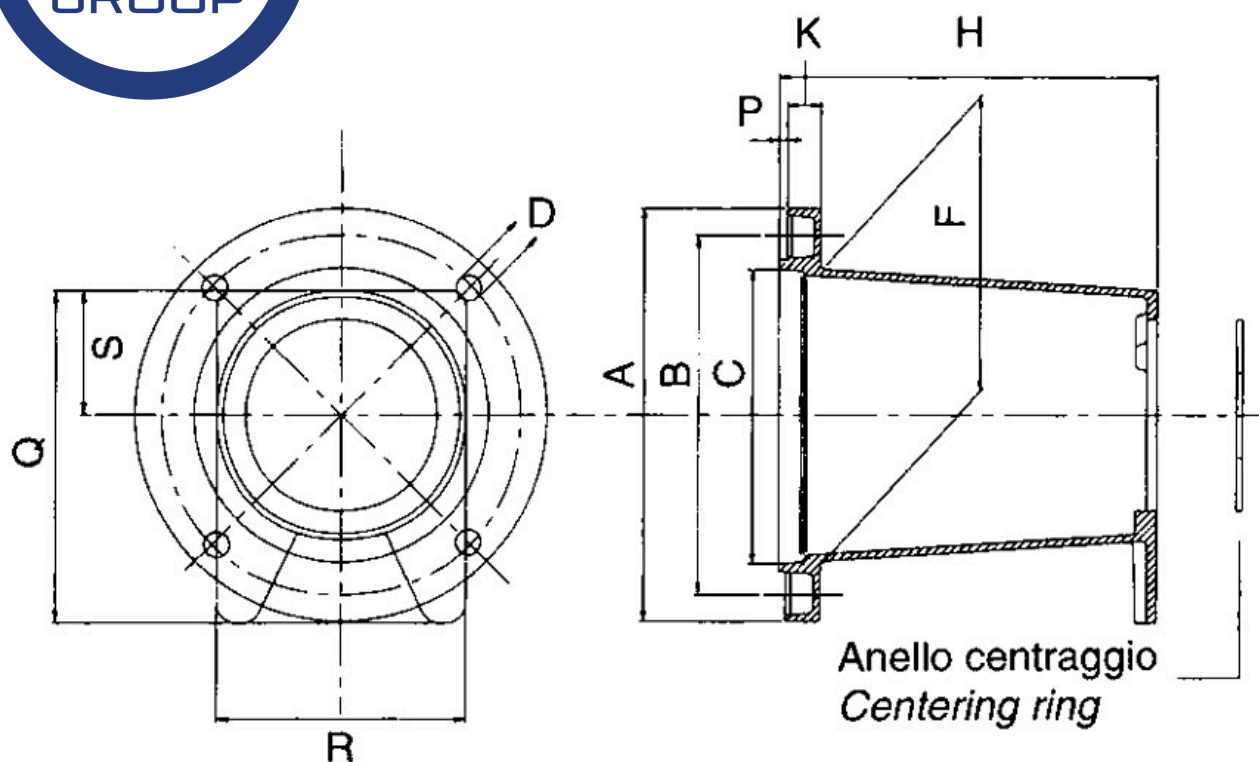
GEAR PUMP DIMENSIONS



PART NUMBER	DISPLACEMENT [cm3 /rev]	GROUP	DIMENSIONS	
			A MM (INCH)	B MM (INCH)
1GP20012373	11.2	2	19 (0.75)	104.7 (4.12)



BELL HOUSINGS & DRIVE COUPLINGS DIMENSIONS



PART NO.	BELL HOUSING	DIMENSIONS (MM)										
		A	B	C	D	F	H	K	P	Q	R	S
ZZ000139	LMH151	110	92	78.5	9	78	98	12	3	90	70	34
ZZ000142	LMH403	146	127	110	9	110	134	12	3	118	91	43.5
ZZ000144	LMH403											
ZZ018324	LMH403											

PART NUMBER	DRIVE COUPLING	HEIGHT (MM)
ZZ000139	ND510	87
ZZ000142	ND613	106
ZZ000144	ND613	
ZZ018324	ND613	

