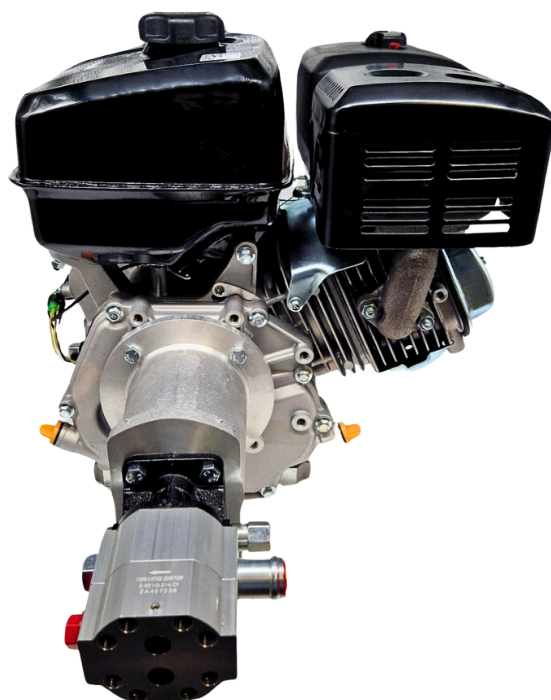
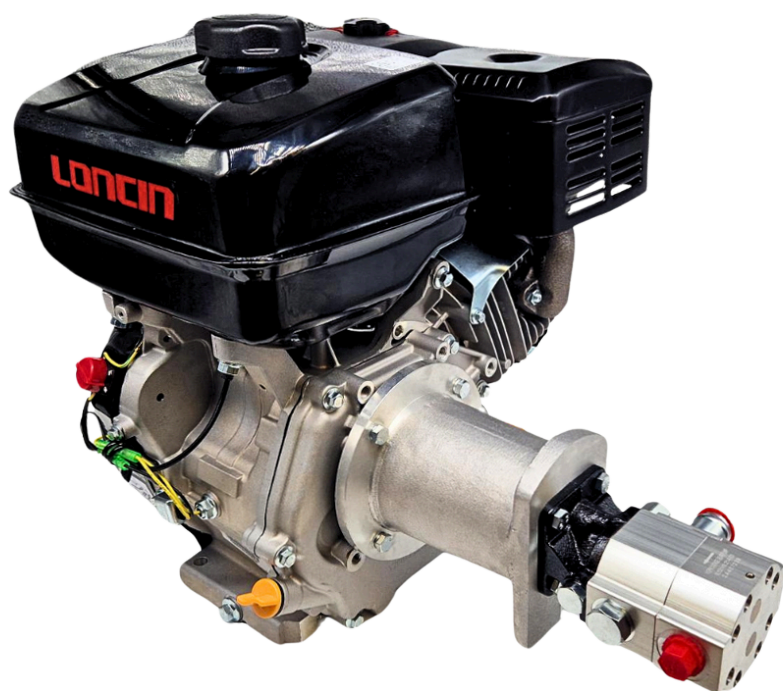


# **Loncin Petrol Engine Hydraulic HI/LO Pump Set**

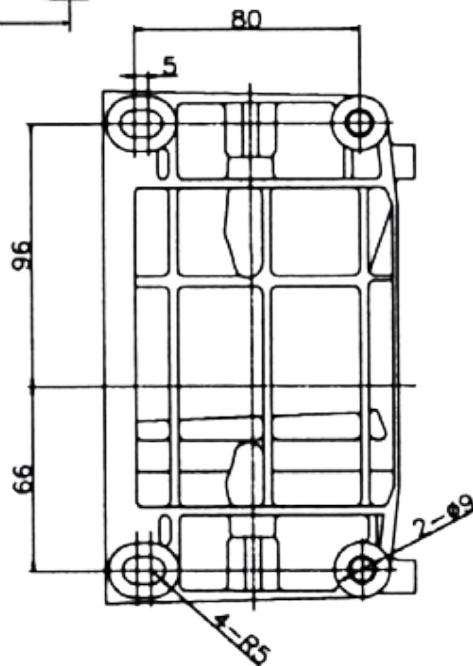
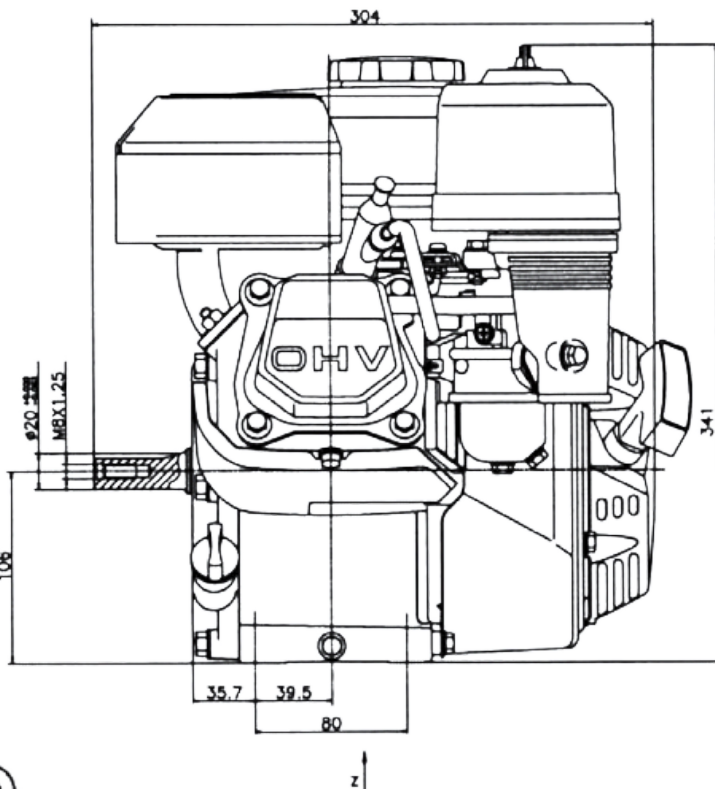
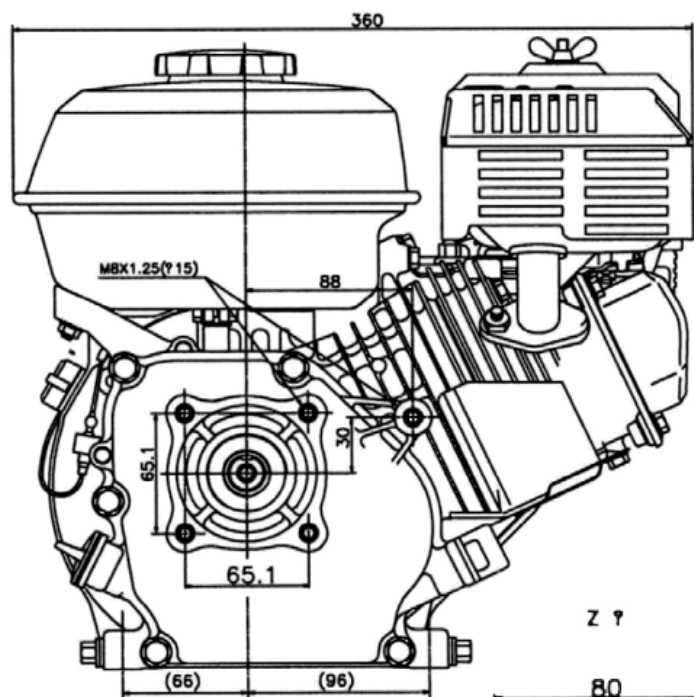
A HI/LO gear pump set uses two pumps—one for high-flow, low-pressure (HI) and one for low-flow, high-pressure (LO). This allows rapid movement at low loads and powerful force at high loads, optimizing performance across varying demands while minimizing engine size and energy use.



## **INCLUDES**

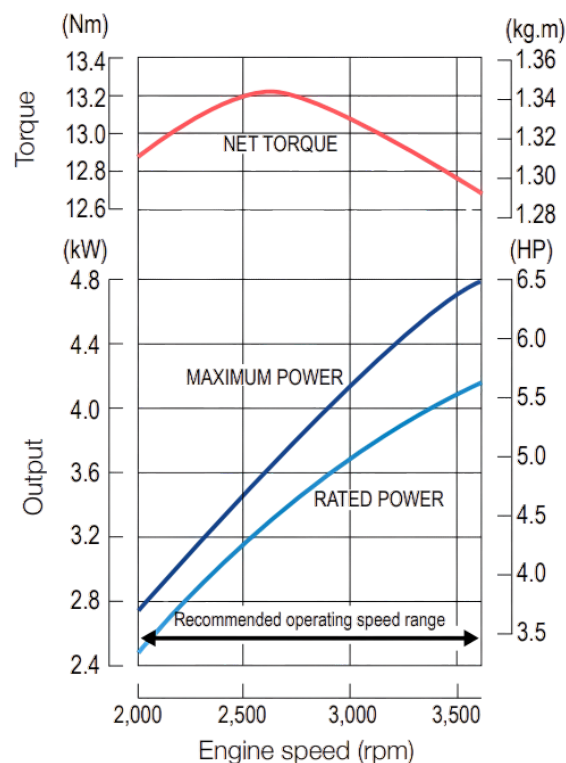
- Loncin Engine
- Flowfit HI/LO Gear Pump
- Italian OMT Bell Housing and Drive Coupling Set

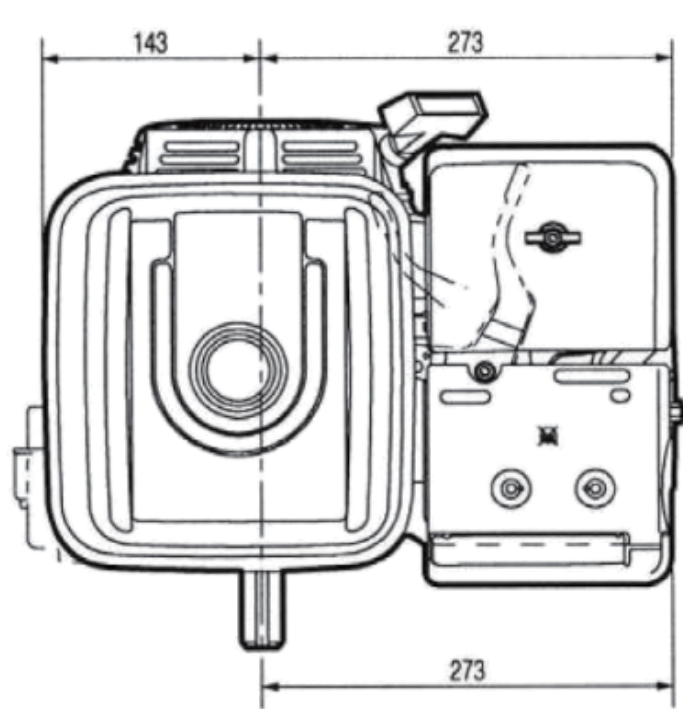
PART NO.	FLOW L/MIN		PRESSURE PSI	HI LO GEAR PUMP	PUMP MODEL	ENGINE HP	ENGINE MODEL
	(AT LOW PRESSURE)	(AT HIGH PRESSURE)	(AT LOW FLOW)				
ZZ001356	30.2	7.56	3000	8GPM	GPCBN080PC	6.5	G200
ZZ001360	44.6	12.96	3000	11GPM	GPCBN110PC	9	G270
ZZ001355	61.5	15.12	3000	16GPM	GPCBN160PC	13	G390
ZZ018248	83.7	25.3	3000	22GPM	GPCBN220PC	24	LC2V80FD5



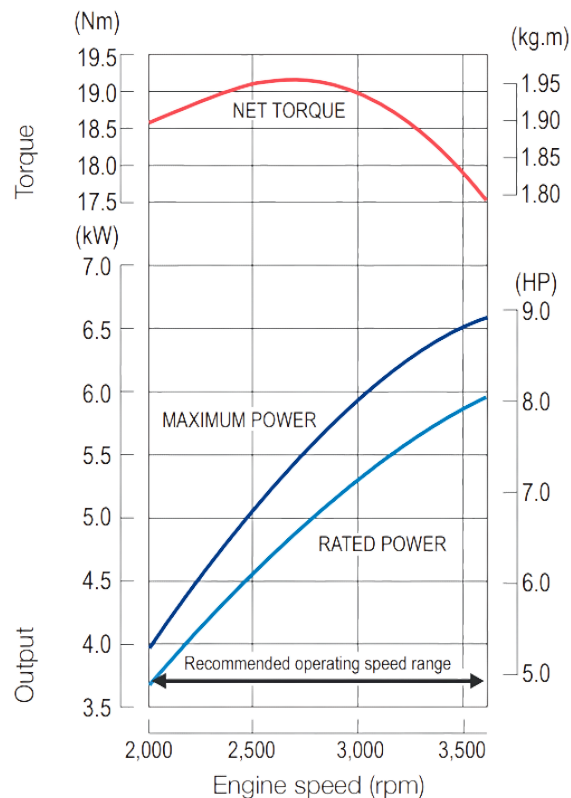
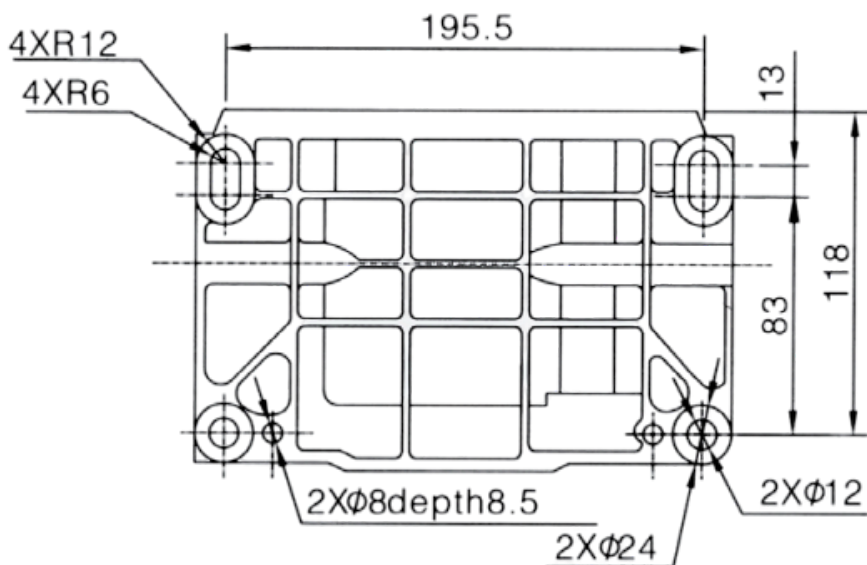
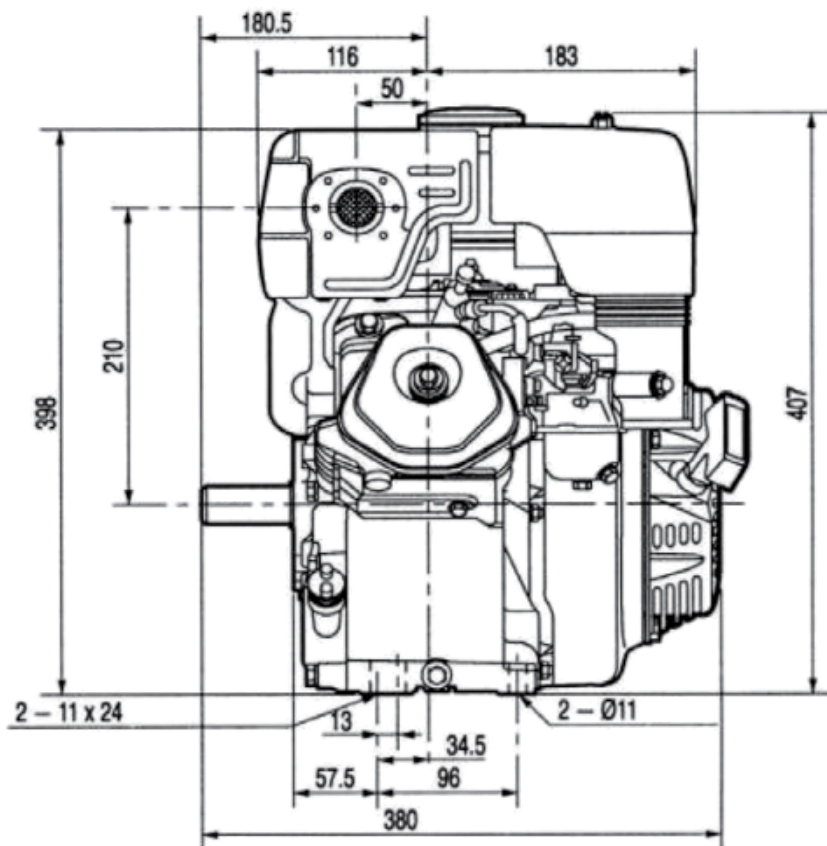
<b>ENGINE TYPE</b>	Single cylinder, 4-stroke, OHV, forced air cooling
<b>NET POWER (HP / KW)</b>	5.5 / 4.1 @ 3600 r/min
<b>GROSS POWER (HP / KW)</b>	6.5 / 4.85 @ 3600 r/min
<b>NET TORQUE (NM)</b>	12.4 @ 2500 r/min
<b>BORE X STROKE (MM)</b>	68 x 54
<b>DISPLACEMENT (CC)</b>	196
<b>COMPRESSION RATIO</b>	8.5 : 1

<b>OIL CAPACITY (L)</b>	0.6
<b>FUEL CONSUMPTION (G/KW H)</b>	≤ 395
<b>OIL CONSUMPTION (G/KW H)</b>	≤ 6.8
<b>IDLE SPEED</b>	1450 ± 150
<b>STARTING SYSTEM</b>	Recoil / Electric start optional
<b>NOISE (≤ 7M)</b>	70dBA
<b>DIMENSIONS (L X W X H MM)</b>	376 x 312 x 335





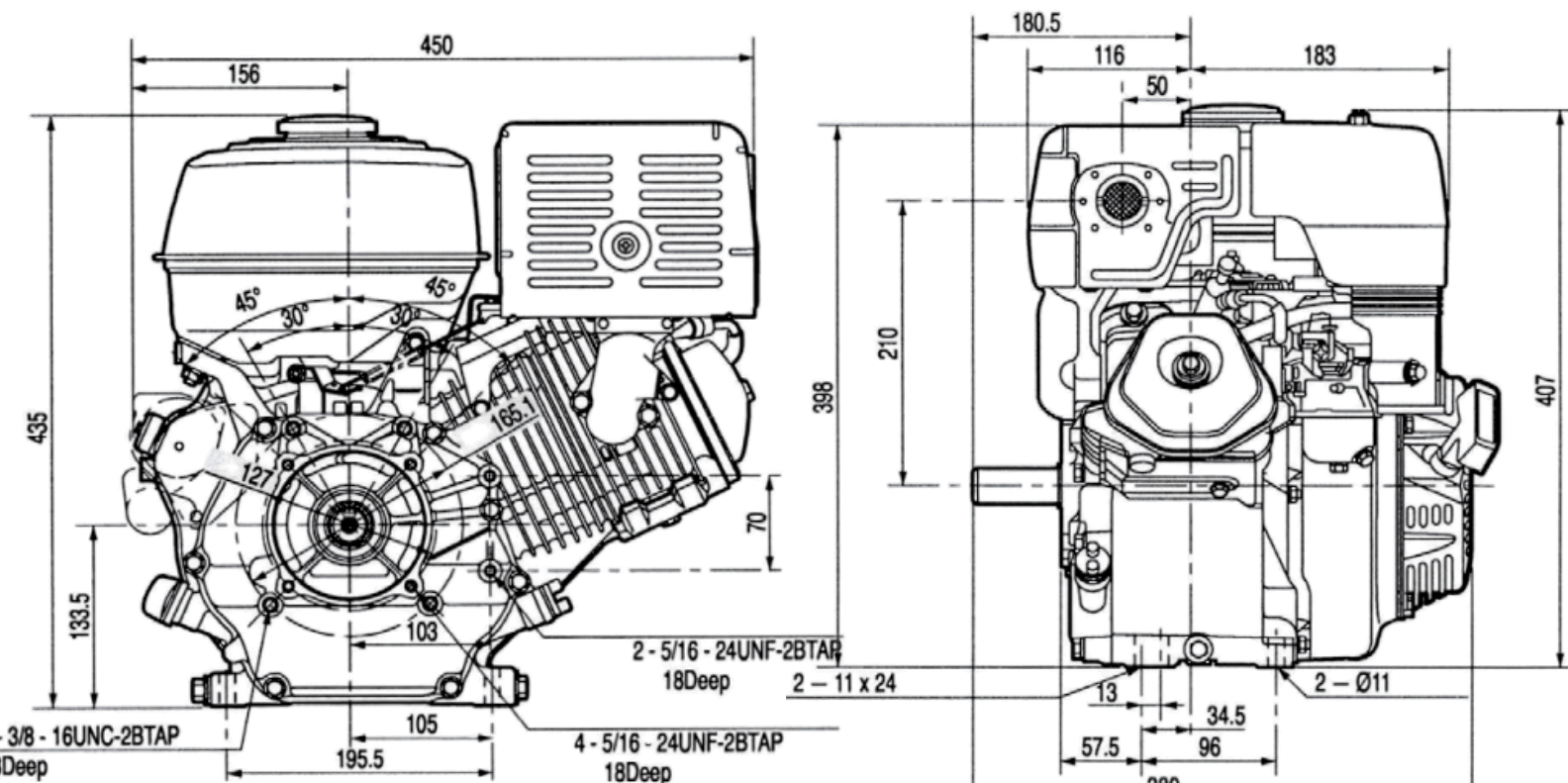
A View



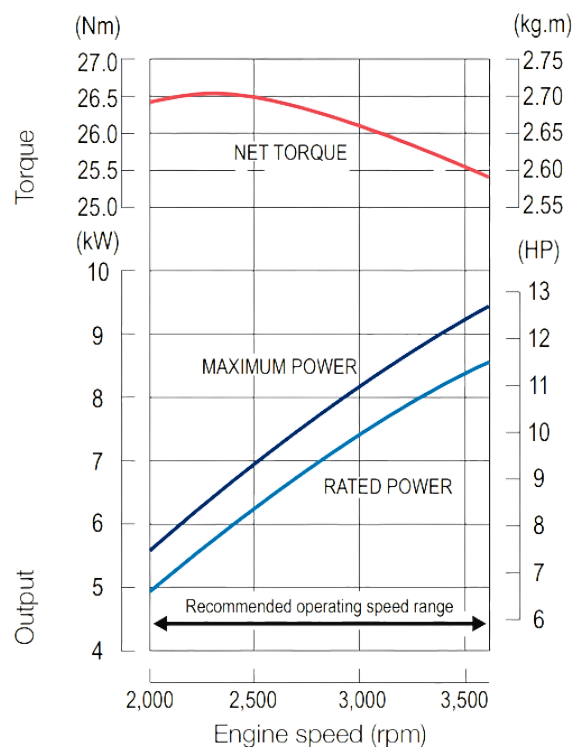
ENGINE TYPE	Single cylinder, 4-stroke, OHV, forced air cooling
NET POWER (HP / KW)	8.0 / 6.0 @ 3600 r/min
GROSS POWER (HP / KW)	9.0 / 6.7 @ 3600 r/min
NET TORQUE (NM)	16.3 @ 2500 r/min
BORE X STROKE (MM)	77 x 58
DISPLACEMENT (CC)	270
COMPRESSION RATIO	8.1:1

OIL CAPACITY (L)	0.95
FUEL CONSUMPTION (G/KW H)	≤ 374
OIL CONSUMPTION (G/KW H)	≤ 6.8
IDLE SPEED	1450 ± 150
STARTING SYSTEM	Recoil / Electric start optional
NOISE (≤ 7M)	70dBA
DIMENSIONS (L X W X H MM)	430 x 380 x 410





A View

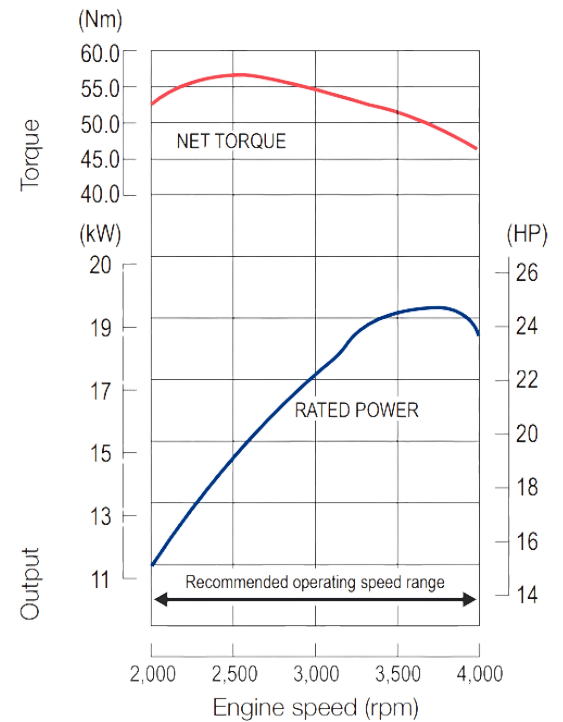
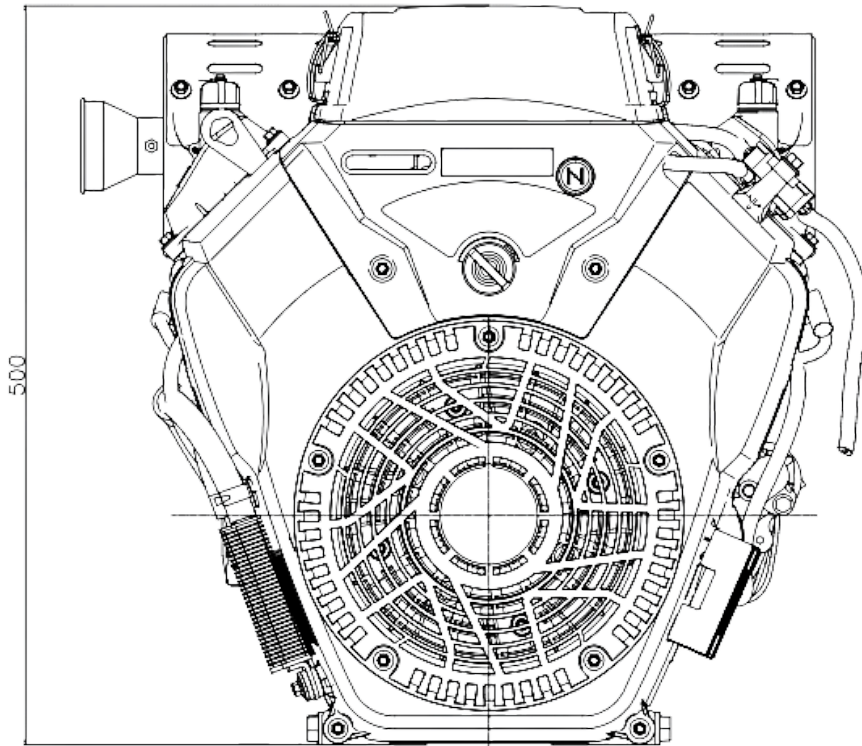


<b>ENGINE TYPE</b>	Single cylinder, 4-stroke, OHV, forced air cooling
<b>NET POWER (HP / KW)</b>	11 / 8.2 @ 3600 r/min
<b>GROSS POWER (HP / KW)</b>	13 / 9.7 @ 3600 r/min
<b>NET TORQUE (NM)</b>	25.1 @ 2500 r/min
<b>BORE X STROKE (MM)</b>	88 x 64
<b>DISPLACEMENT (CC)</b>	389
<b>COMPRESSION RATIO</b>	8 : 1

<b>OIL CAPACITY (L)</b>	1.1
<b>FUEL CONSUMPTION (G/KW H)</b>	≤ 374
<b>OIL CONSUMPTION (G/KW H)</b>	≤ 6.8
<b>IDLE SPEED</b>	1450 ± 150
<b>STARTING SYSTEM</b>	Recoil / Electric start optional
<b>NOISE (≤ 7M)</b>	70dBA
<b>DIMENSIONS (L X W X H MM)</b>	450 x 405 x 443

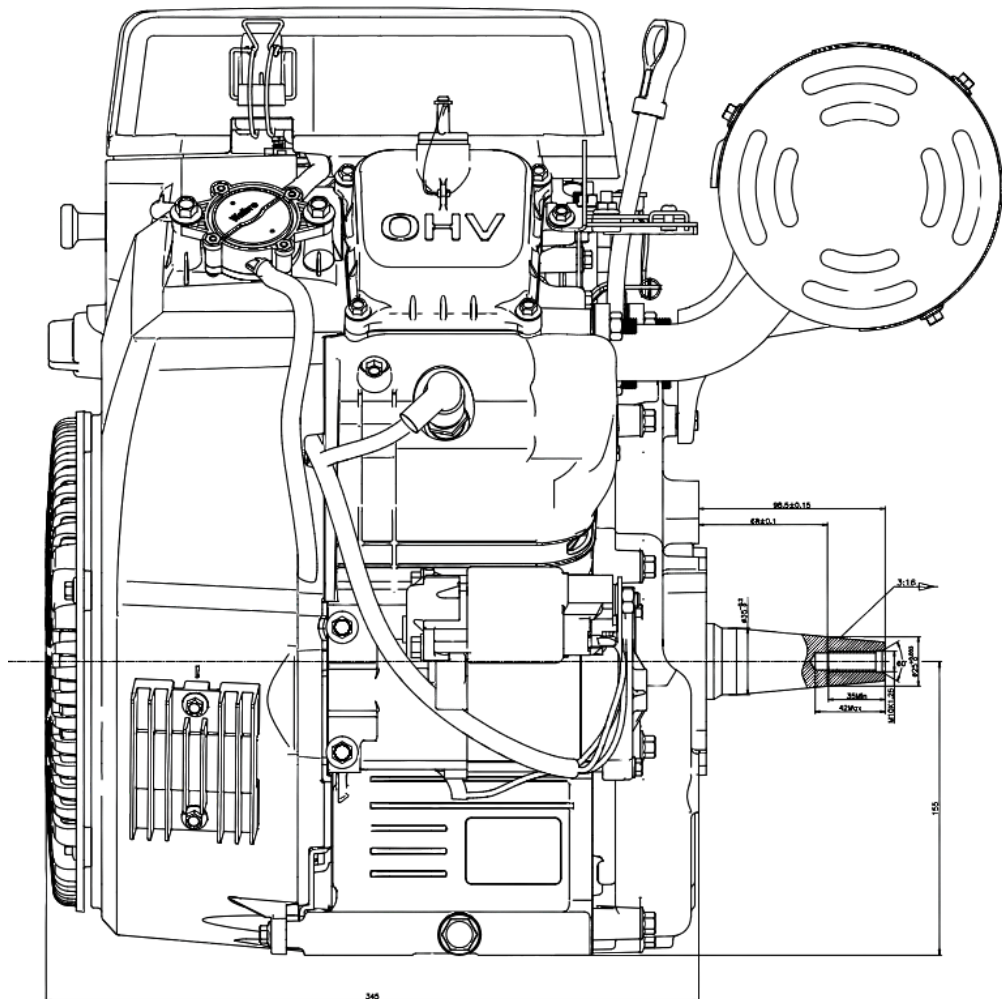


## LC2V80FD DIMENSIONS



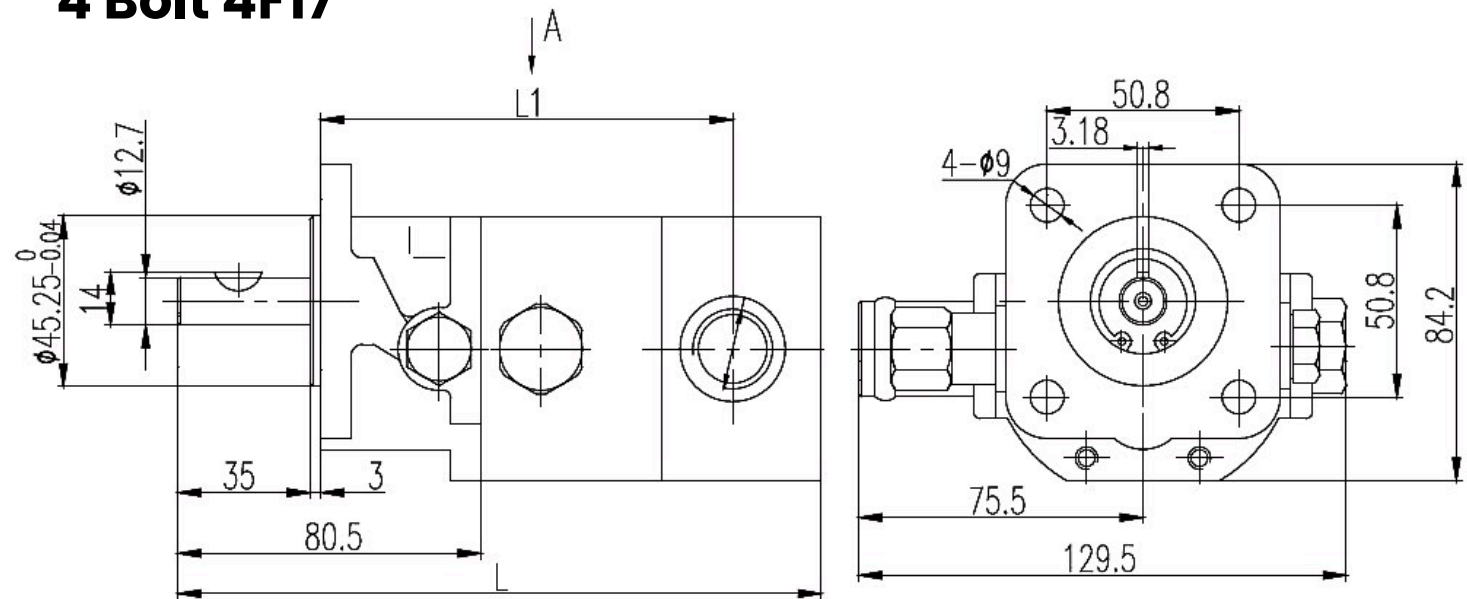
<b>ENGINE TYPE</b>	V-Twin, 4-stroke, OHV, forced air cooling
<b>NET POWER (HP / KW)</b>	24.1 / 19 @ 3600 r/min
<b>GROSS POWER (HP / KW)</b>	-
<b>NET TORQUE (NM)</b>	52 @ 2800 r/min
<b>BORE X STROKE (MM)</b>	80 x 76
<b>DISPLACEMENT (CC)</b>	764
<b>COMPRESSION RATIO</b>	8.5 : 1

<b>OIL CAPACITY (L)</b>	1.8
<b>FUEL CONSUMPTION (G/KW H)</b>	≤ 360
<b>OIL CONSUMPTION (G/KW H)</b>	-
<b>IDLE SPEED</b>	1500 ± 150
<b>STARTING SYSTEM</b>	Electric
<b>NOISE (≤ 7M)</b>	-
<b>DIMENSIONS (L X W X H MM)</b>	507 x 552 x 500

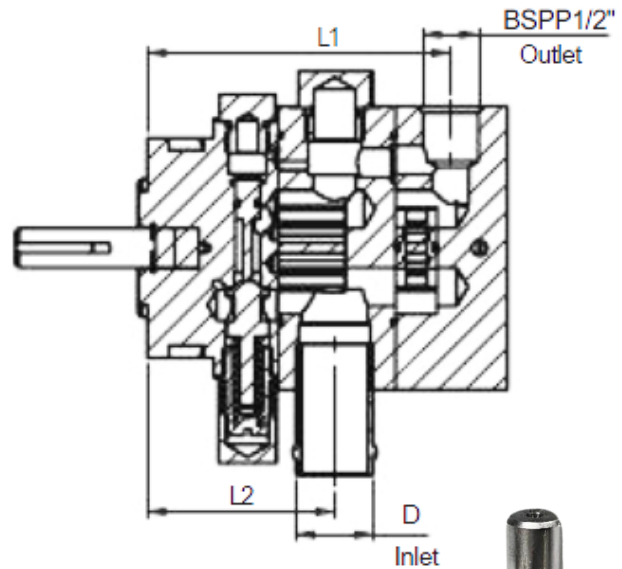
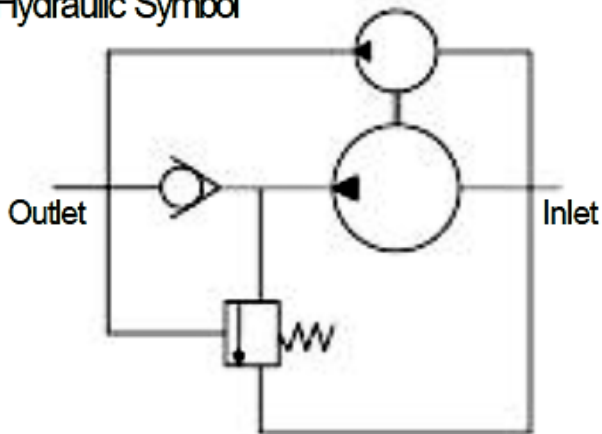


# HI LO GEAR PUMP DIMENSIONS

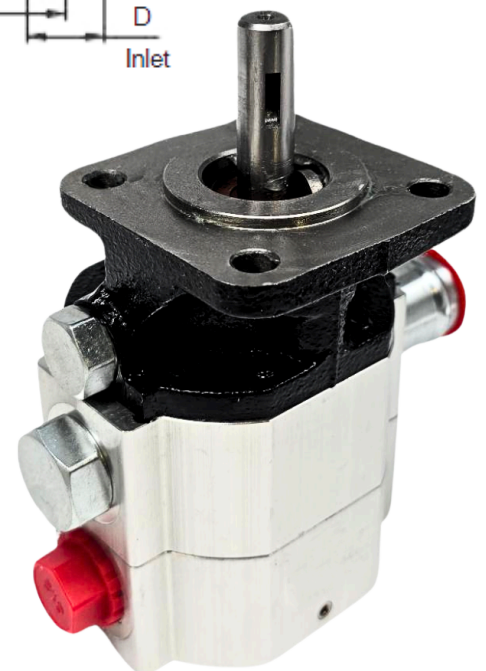
## 4 Bolt 4F17



Hydraulic Symbol

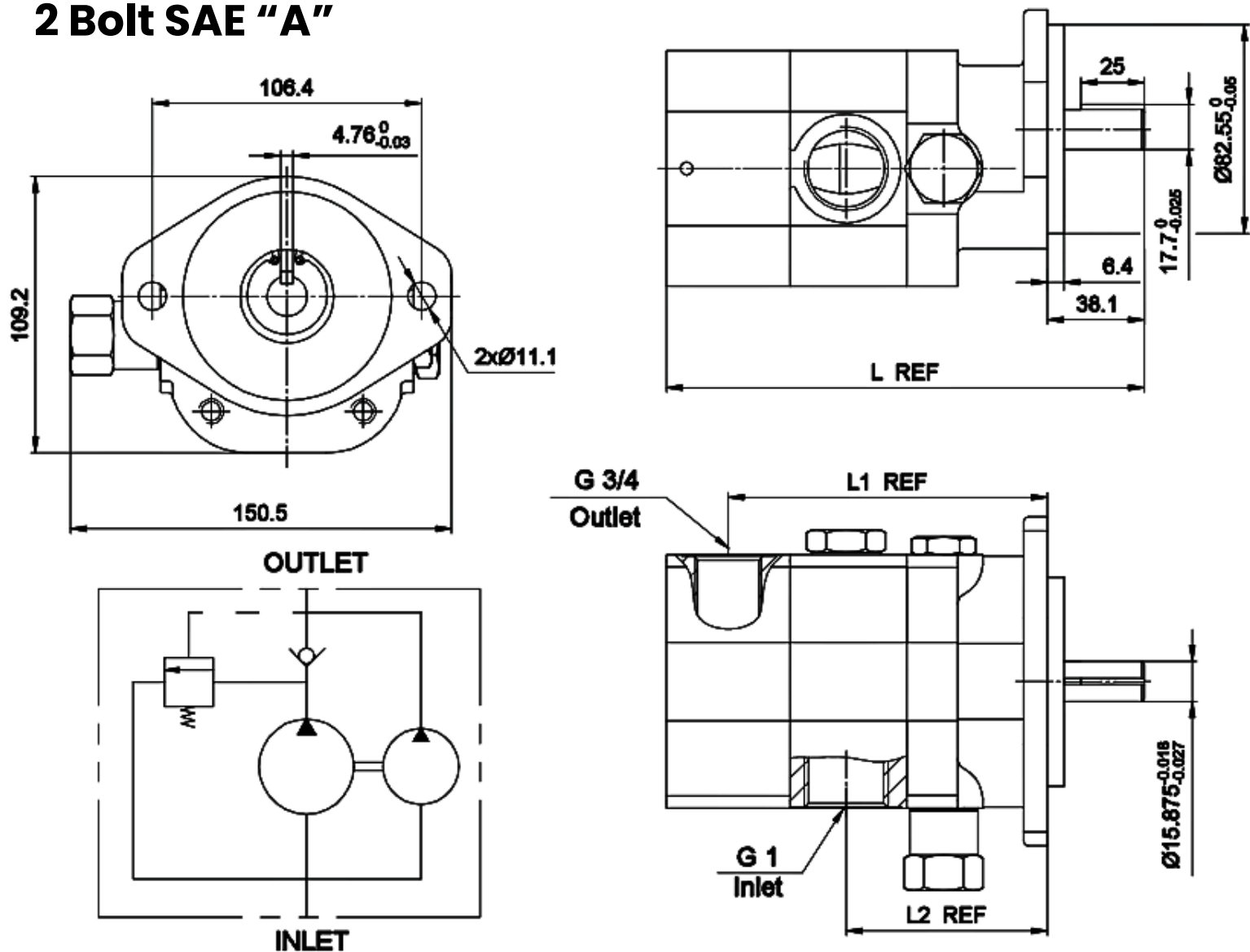


Model	L(mm)	L1(mm)	L2(mm)
GPCBN080PC	154.2	95.2	61.2
GPCBN110PC	167.9	107.6	69.6
GPCBN160PC	180.7	122.1	84.1



# HI LO GEAR PUMP DIMENSIONS

## 2 Bolt SAE "A"



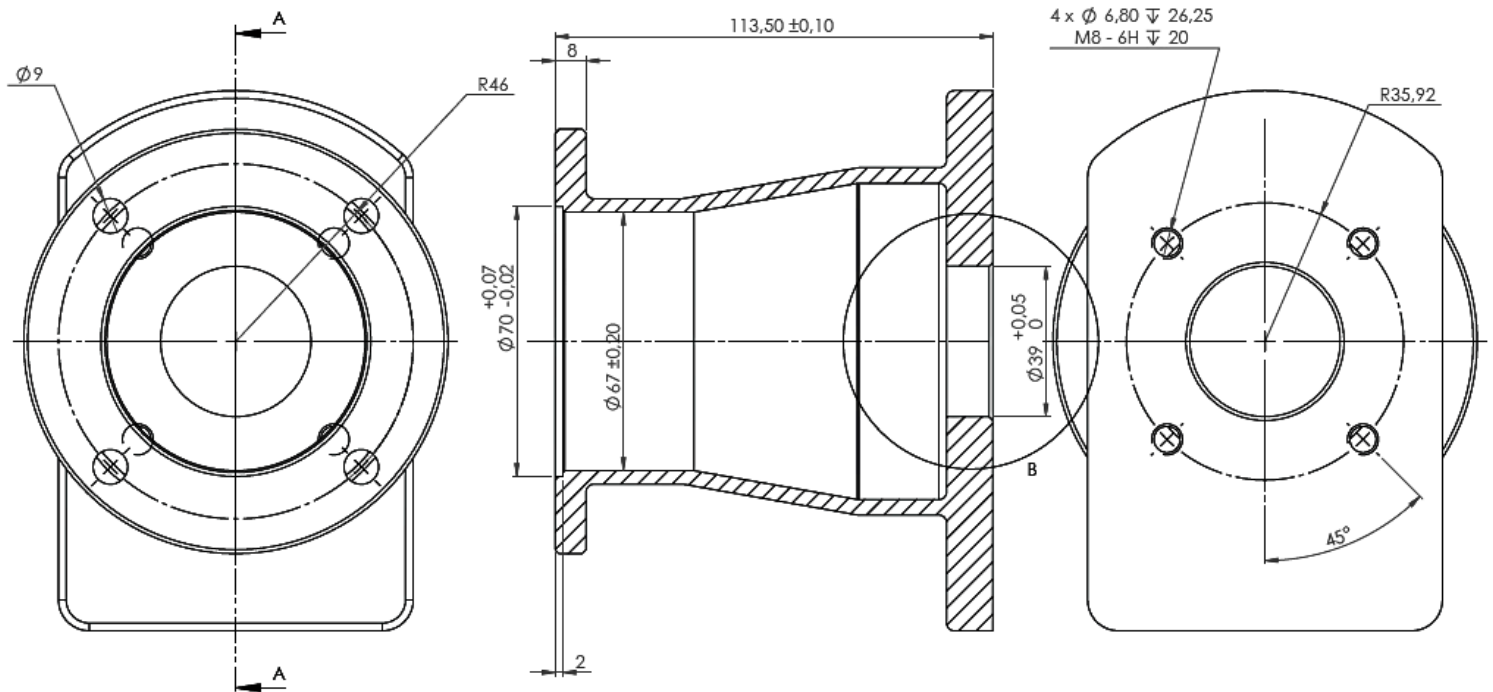
Model	L(mm)	L1(mm)	L2(mm)
GPCBN220PC	188.7	126.1	79.6





# HI/LO BELL HOUSINGS & DRIVE COUPLINGS INFORMATION

## BHE112/045A

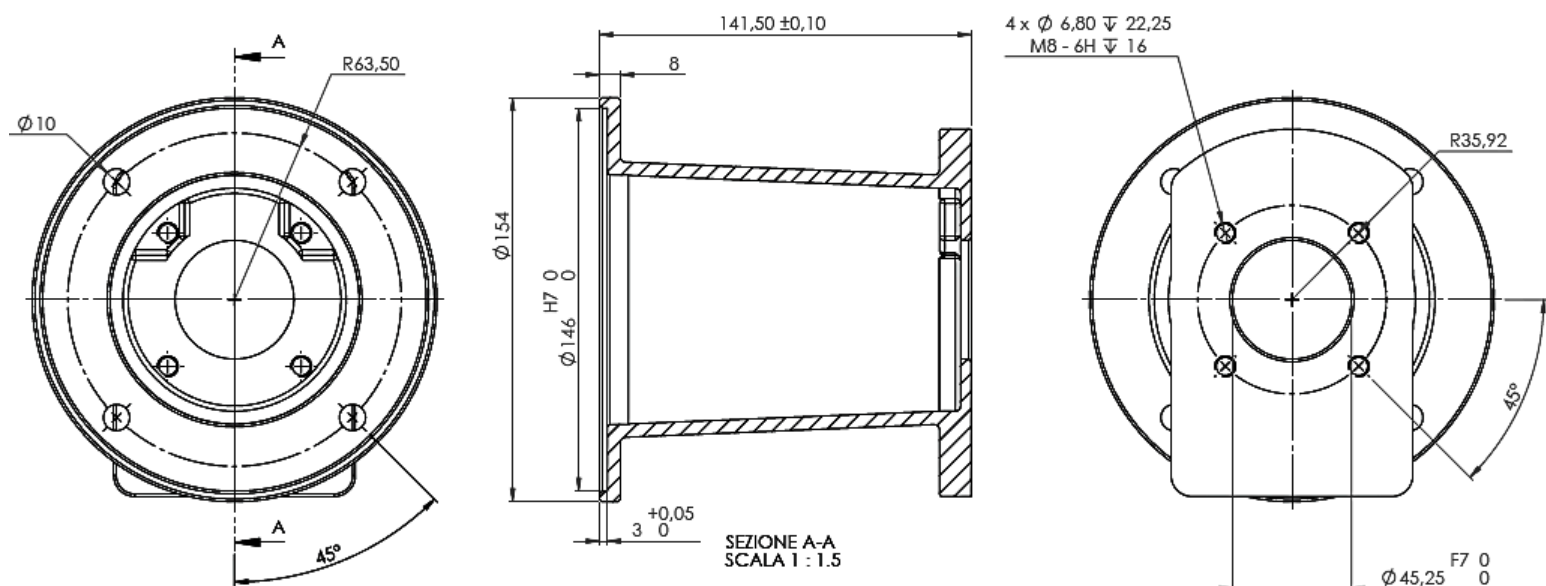


PART NO.	BELL HOUSING	ENGINE COUPLING	PUMP COUPLING
ZZ001356	BHE112/045A	HC219MC048	HC212HB035



# HI/LO BELL HOUSINGS & DRIVE COUPLINGS INFORMATION

## BHE152/045A



PART NO.	BELL HOUSING	ENGINE COUPLING	PUMP COUPLING
ZZ001360	BHE152/045A	HC325NC048	HC312HB035
ZZ001355			
ZZ018248	BHE152/082A	HC325NC048	HC315MB035

## BHE152/082A

