

HPT25VS-ROT

Iron cast body

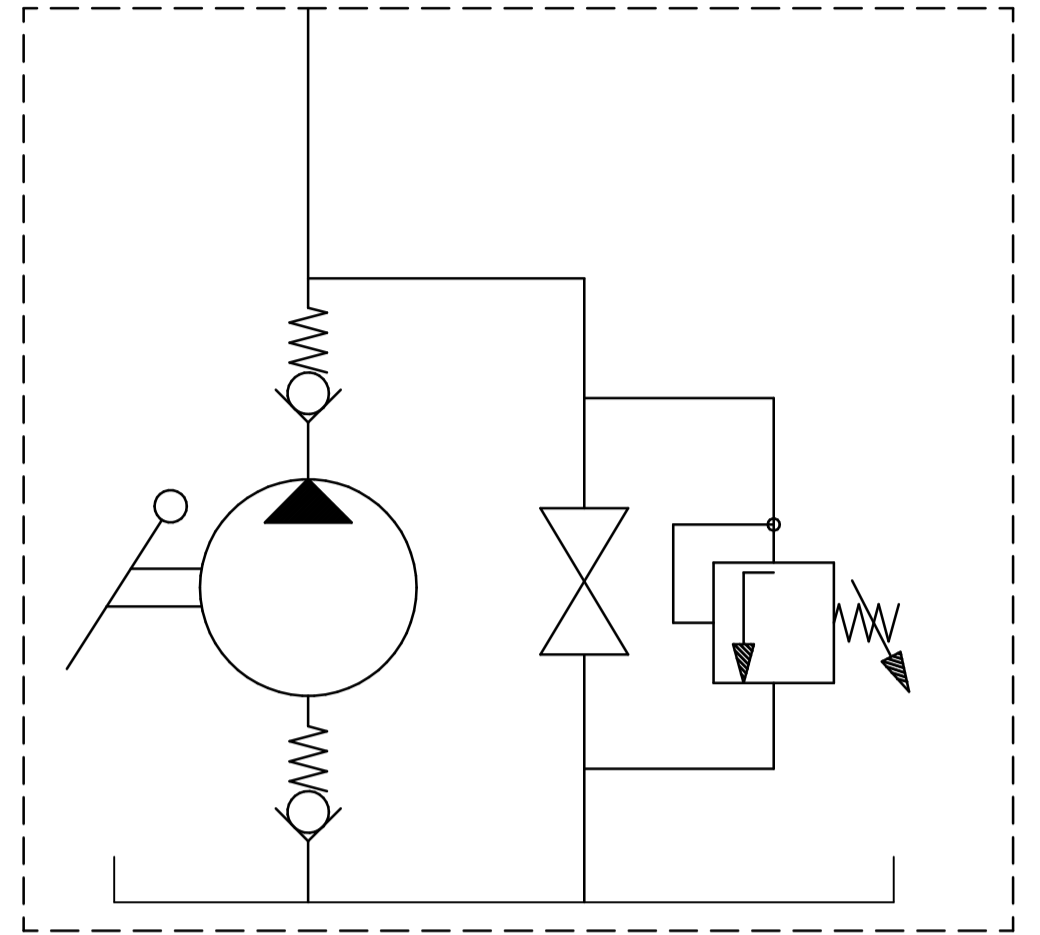
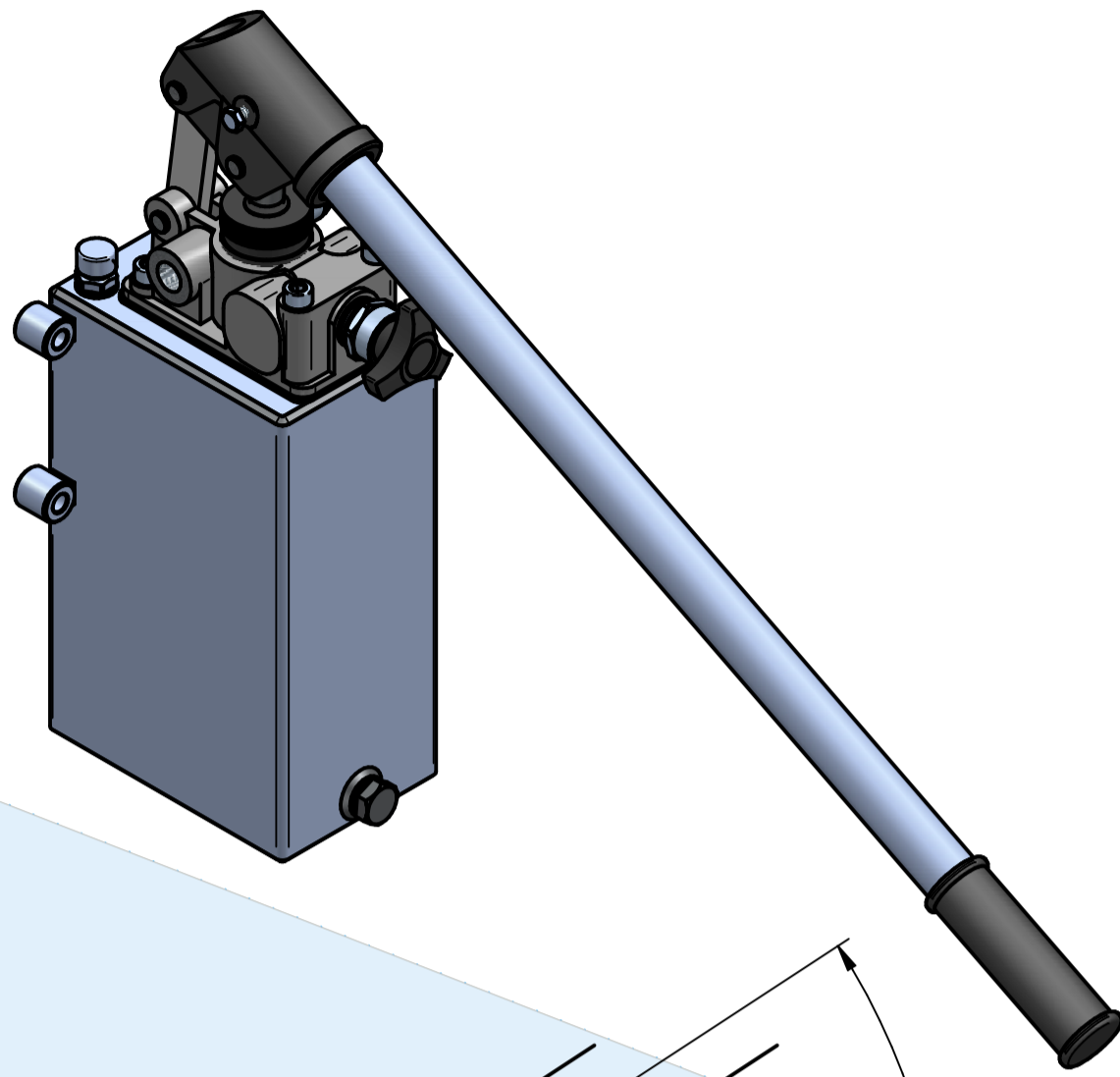
Stainless steel rod piston

Funzionamento a doppio effetto per cilindro a semplice effetto

Double-stroke for a single acting cylinder



code: HPT25VS-ROT+SR03FE+LV27X600



Pressure relief valve

Taratura valvola di massima pressione - Comunque non oltre la pressione massima della pompa.
Relief valve setting - However not over the pump's max pressure
min - max (bar) 30 - 200

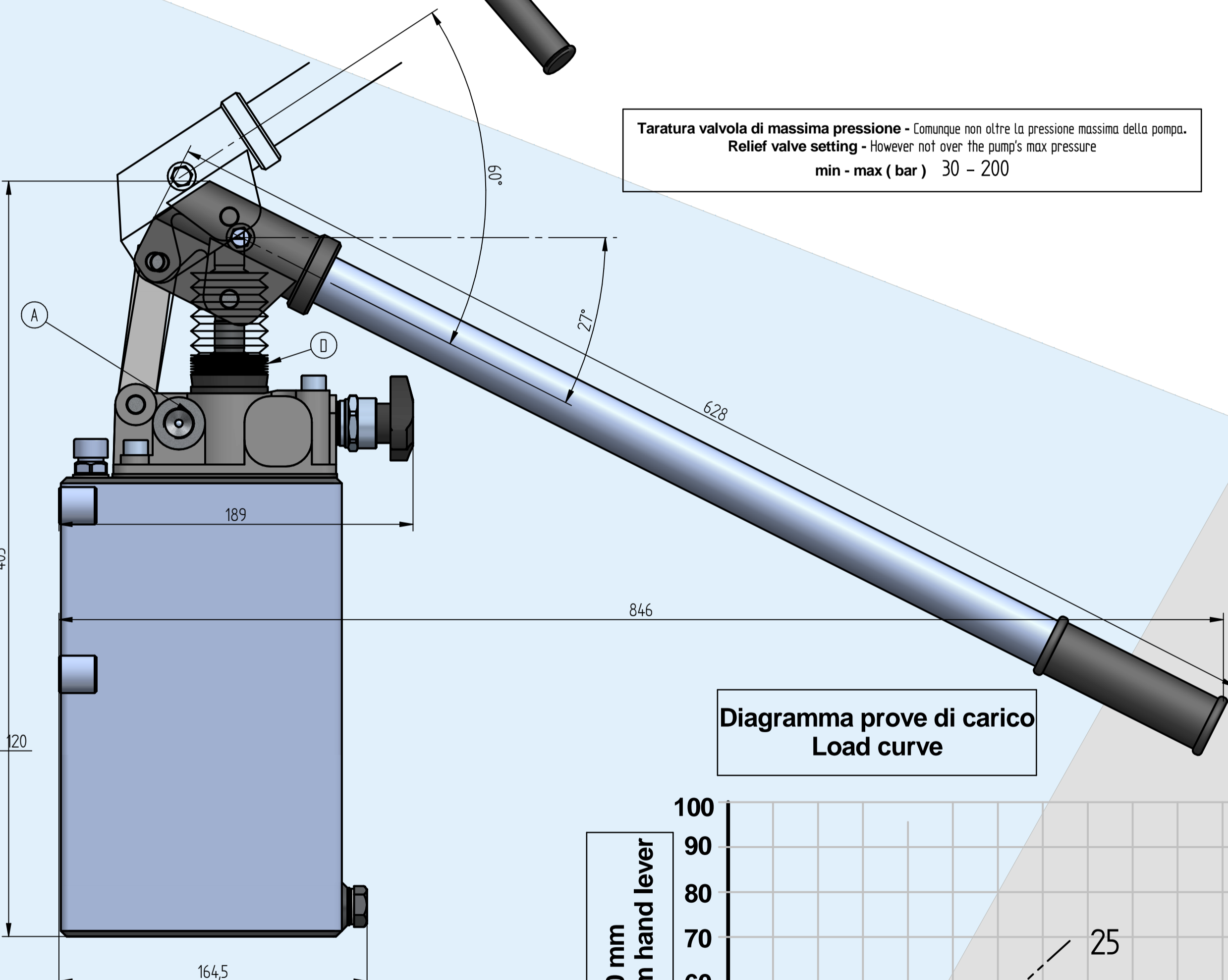
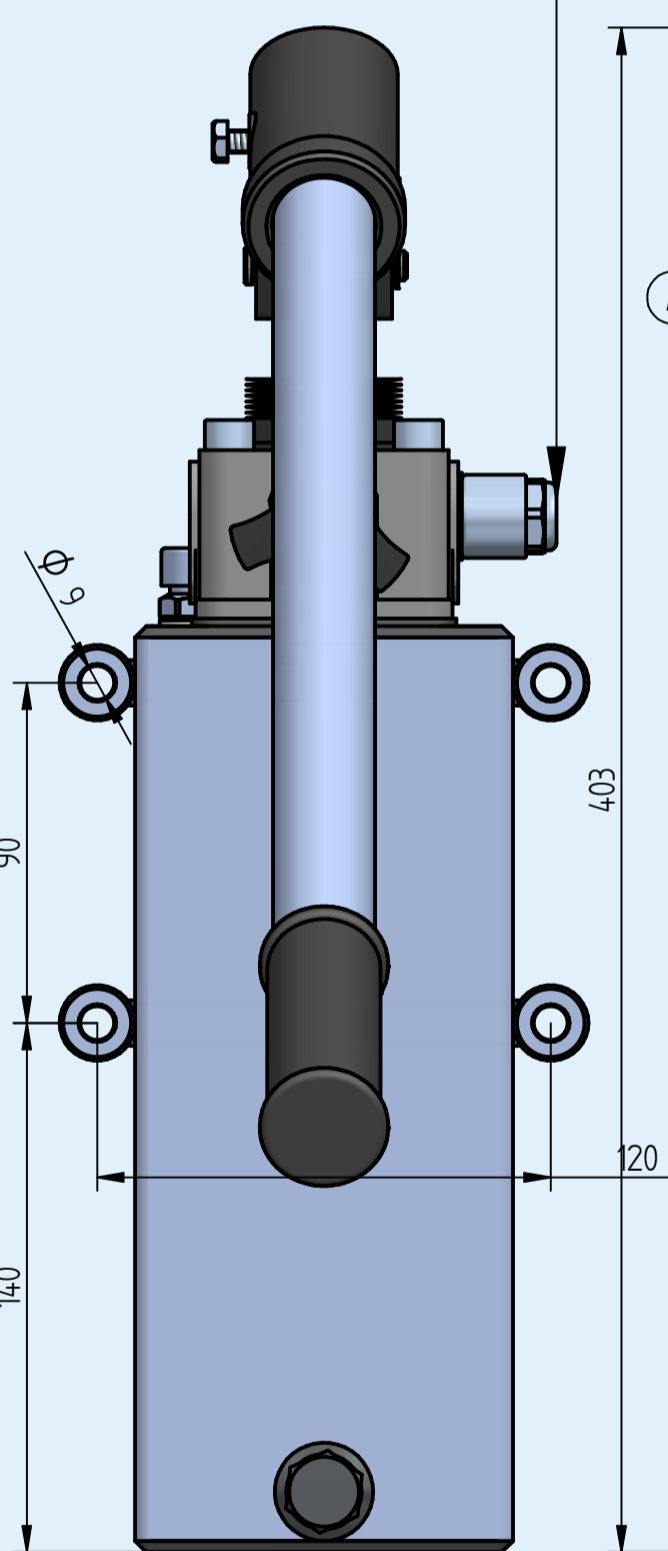
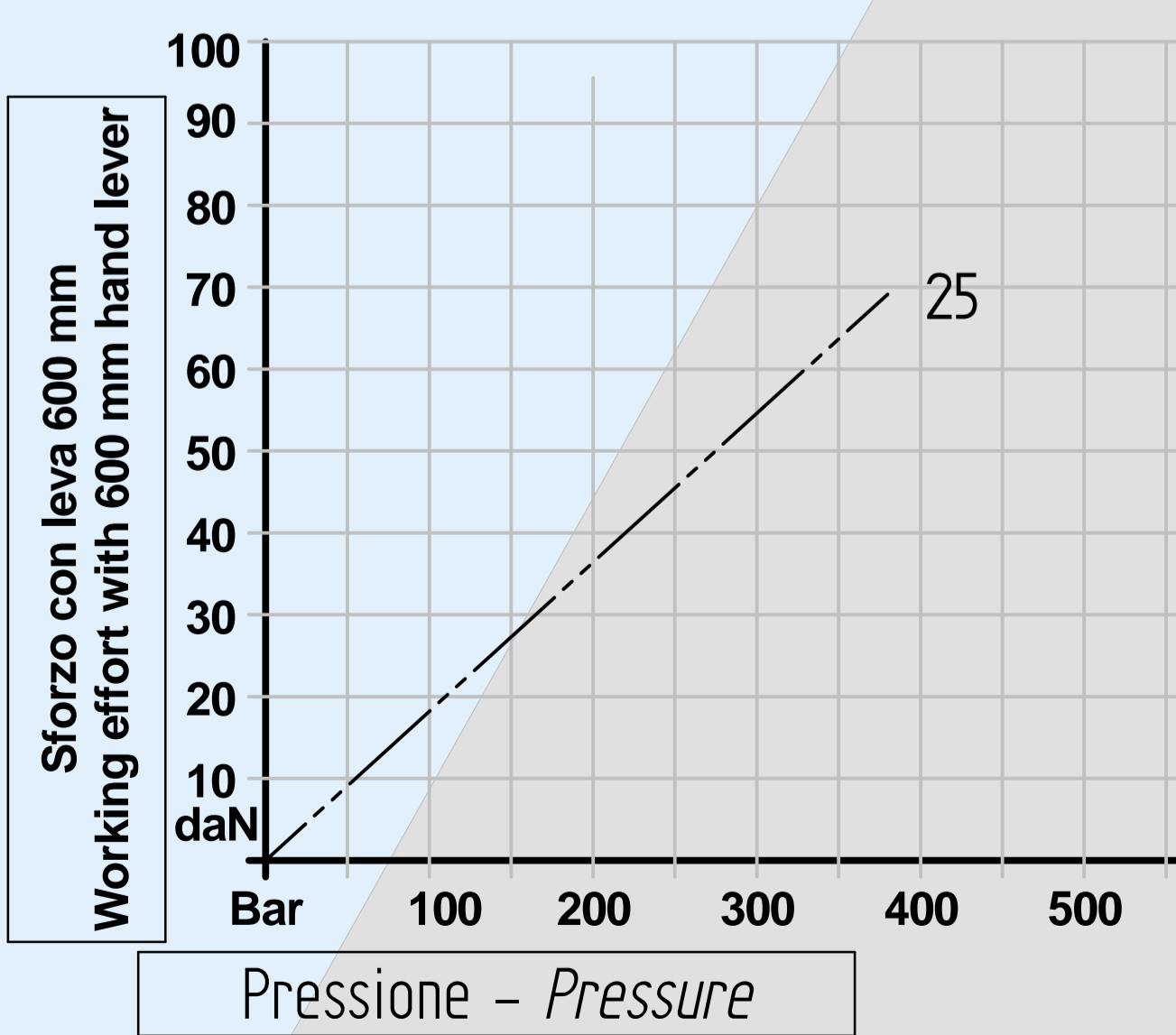


Diagramma prove di carico
Load curve



Mandata Pressure porte	Oil tank Lt	Diametro leva Lever diameter	Soffietto Bellows
A	3	C	D
3/8 GAS F		27 mm	

Line	Cilindrat a Flow (cc)	Pressione massima Max pressure (bar)	Peso Weight (Kg)
25	19,4	250	8,1