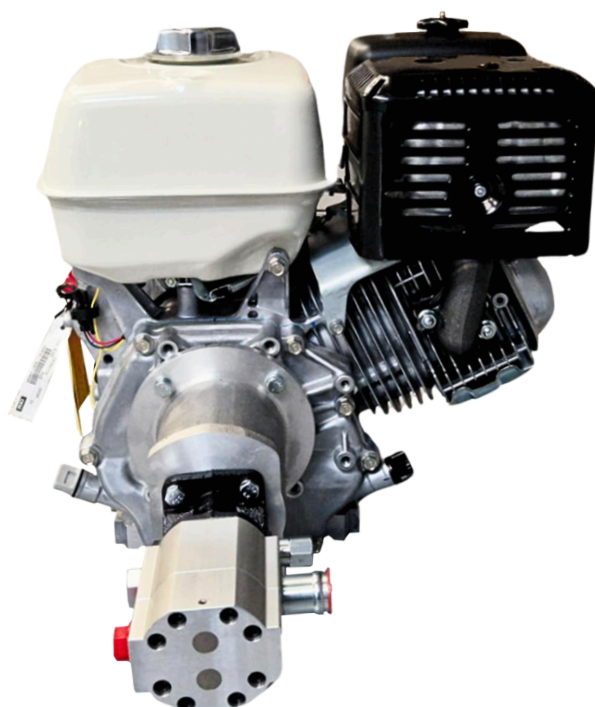


HONDA PETROL ENGINE HYDRAULIC HI/LO PUMP SET

A HI/LO gear pump set uses two pumps—one for high-flow, low-pressure (HI) and one for low-flow, high-pressure (LO). This allows rapid movement at low loads and powerful force at high loads, optimizing performance across varying demands while minimizing engine size and energy use.

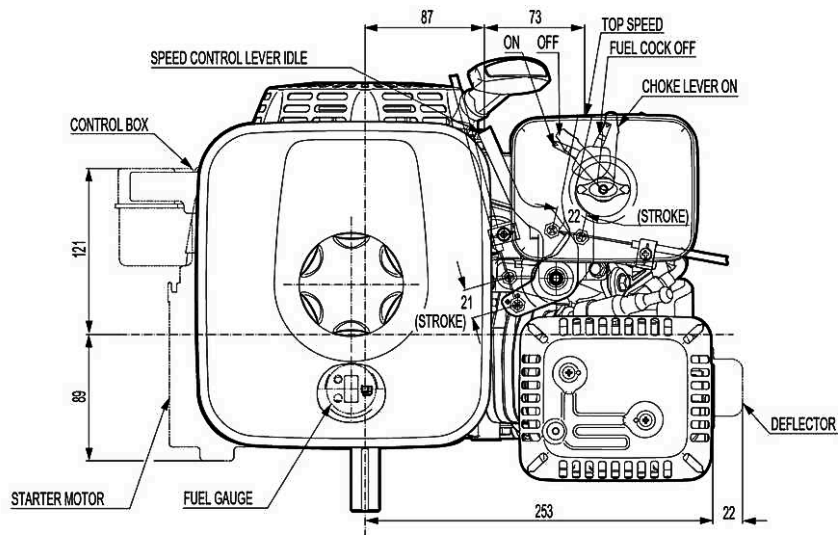
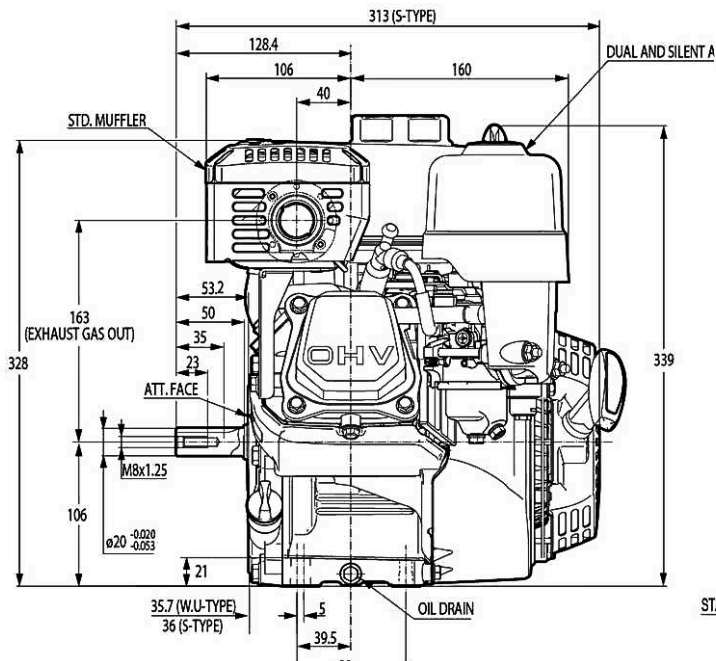
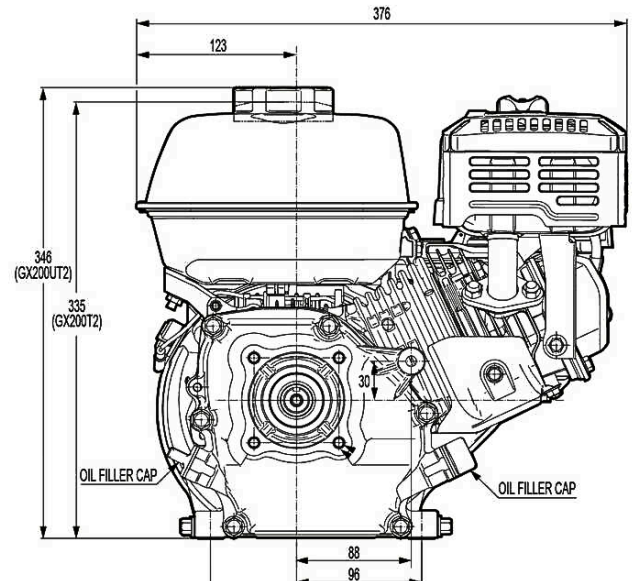
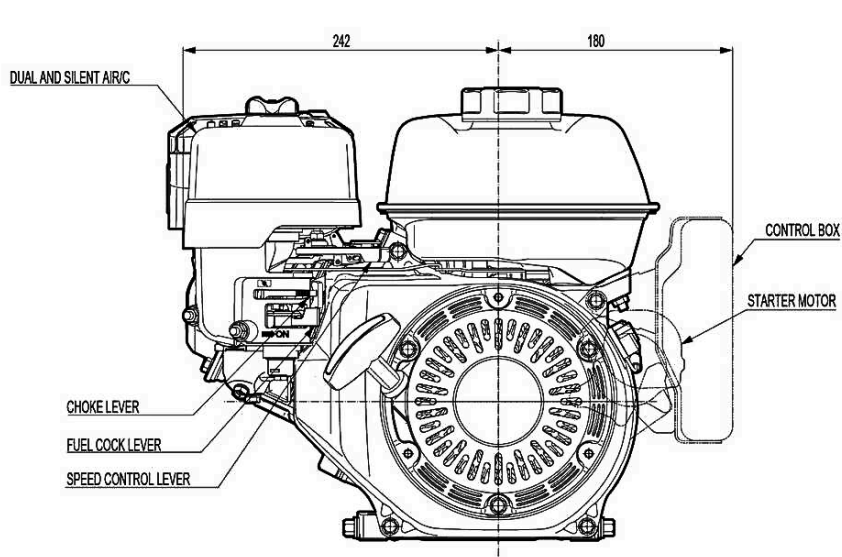


INCLUDES

- Genuine Honda Engine
- Flowfit HI/LO Gear Pump
- Italian OMT Bell Housing and Drive Coupling Set

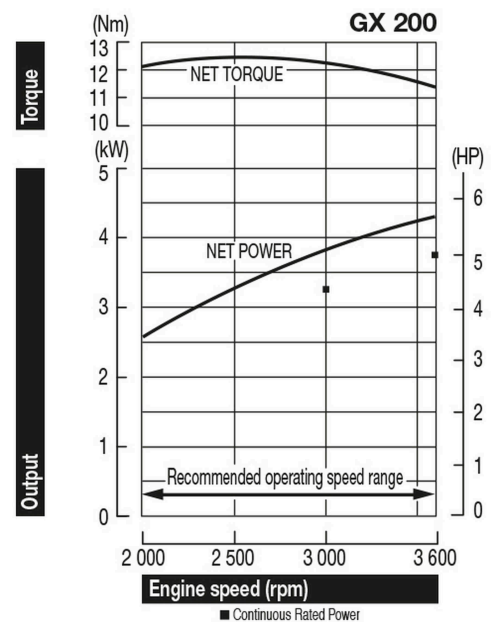
PART NO.	FLOW L/MIN		PRESSURE PSI	HI LO GEAR PUMP	PUMP MODEL	ENGINE HP	ENGINE MODEL
	(AT LOW PRESSURE)	(AT HIGH PRESSURE)	(AT LOW FLOW)				
ZZ002406	30.2	7.56	3000	8GPM	GPCBN080PC	6.5	GX200
ZZ002408	44.6	12.96	3000	11GPM	GPCBN110PC	9.5	GX270
ZZ002410	61.5	15.12	3000	16GPM	GPCBN160PC	13	GX390
ZZ018325	83.7	25.3	3000	22GPM	GPCBN220PC	20	GX630

POWERED by HONDA GX200 DIMENSIONS

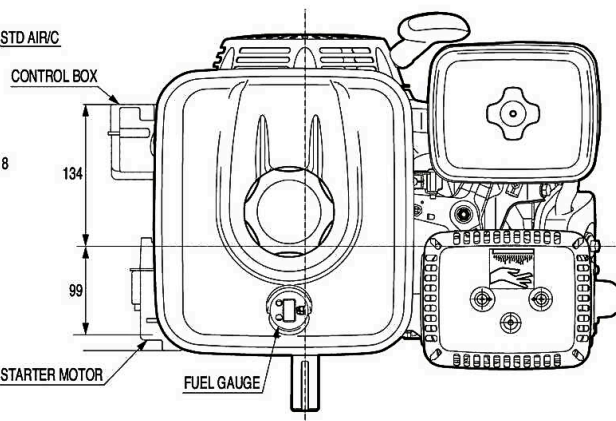
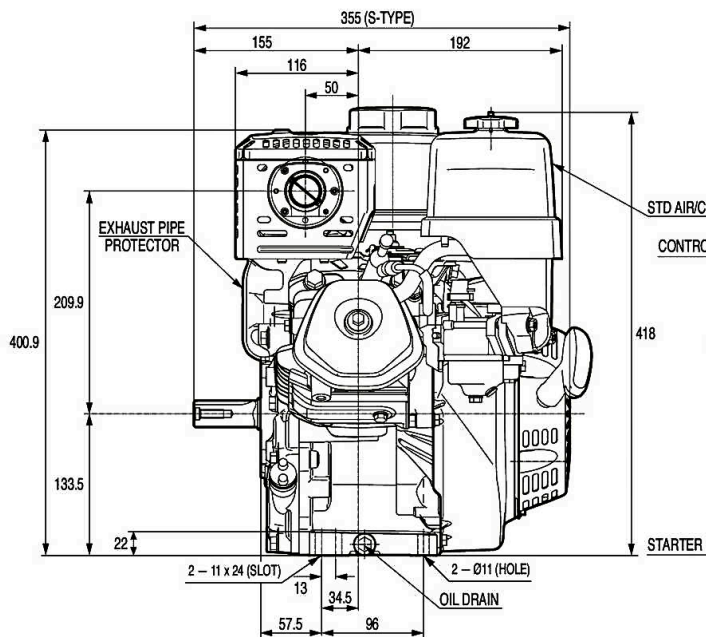
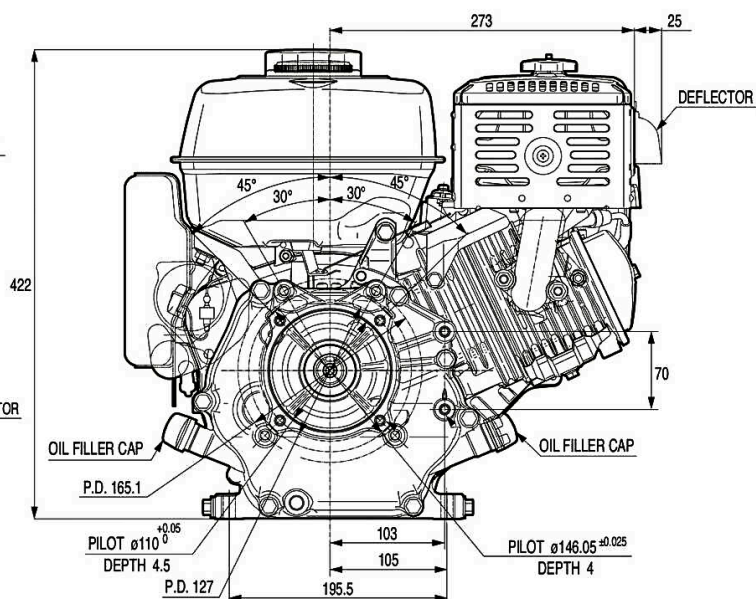
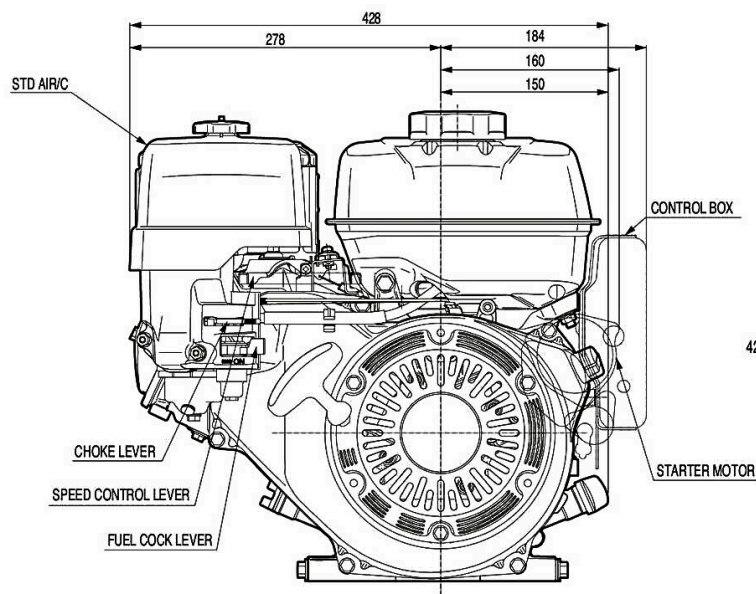


ENGINE TYPE	4-stroke single cylinder OHV petrol engine 25° inclined cylinder horizontal shaft
CYLINDER SLEEVE TYPE	Cast iron sleeve
BORE X STROKE	68 x 54 mm
DISPLACEMENT	196 cm ³
COMPRESSION RATIO	8.5 : 1
NET POWER	4.3 kW (5.8 HP) / 3600 rpm
CONT. RATED POWER	3.3 kW (4.4 HP) / 3000 rpm 3.7 kW (5.0 HP) / 3600 rpm

MAX. NET TORQUE	12.4 Nm (1.26 kgfm) / 2500 rpm
IGNITION SYSTEM	Transistorised
STARTER	Recoil (el. start optional)
FUEL TANK CAPACITY	3.1 Liter
FUEL CONS. AT CONT. RATED POWER	1.7 L/h - 3600 rpm
ENGINE OIL CAPACITY	0.6 Liter
DIMENSIONS (L X W X H)	321 x 376 x 346 mm

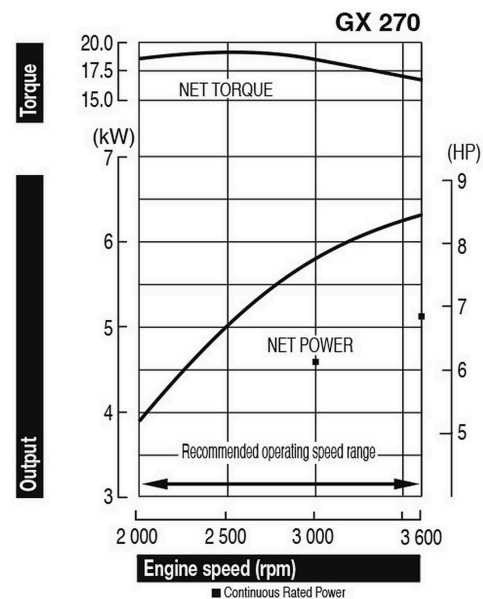


POWERED by HONDA GX270 DIMENSIONS

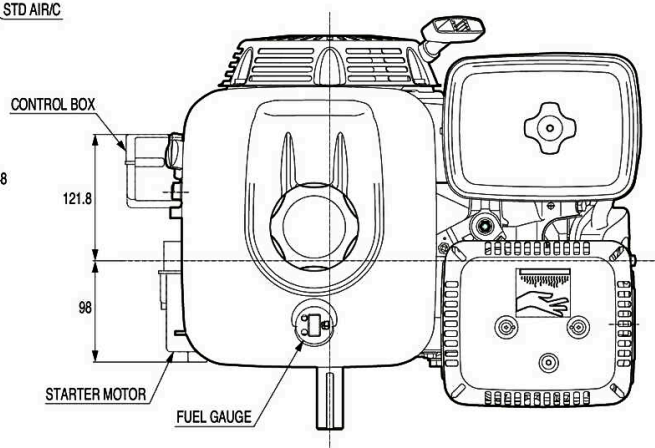
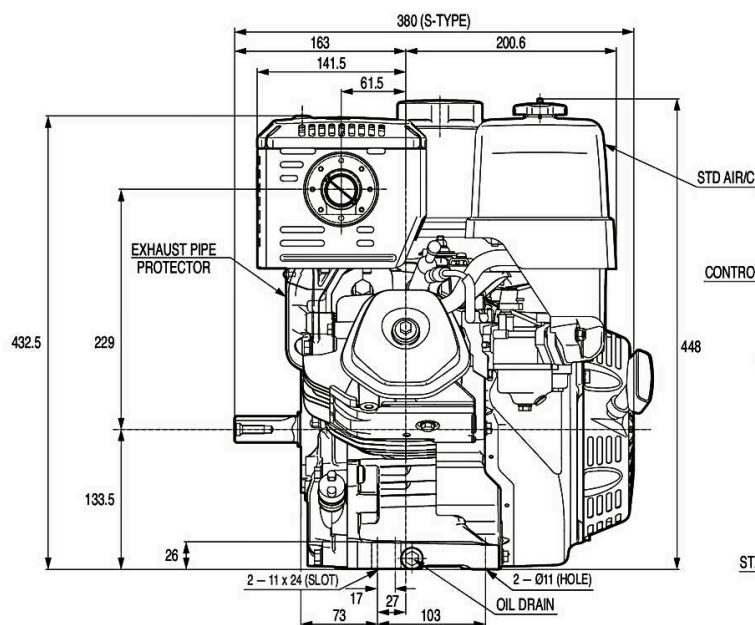
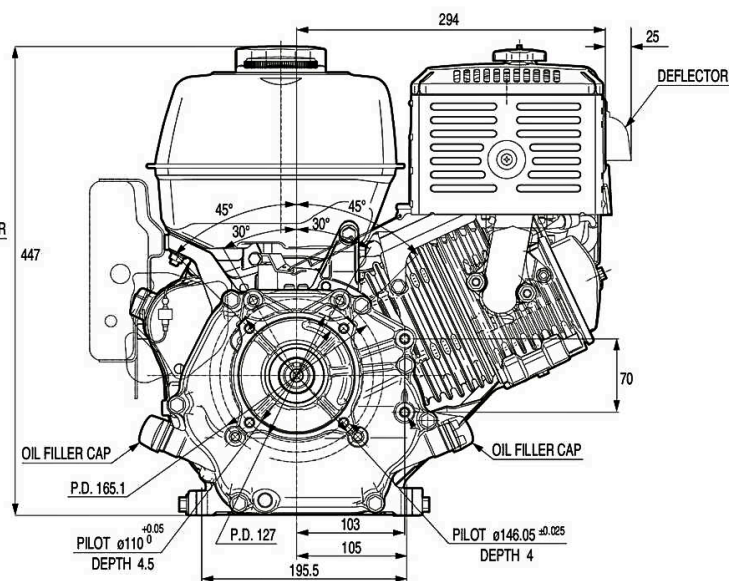
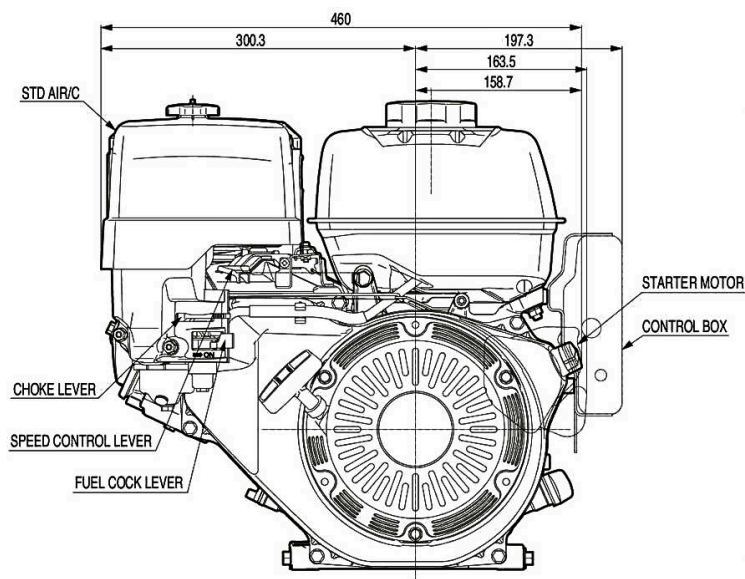


ENGINE TYPE	4-stroke single cylinder OHV petrol engine 25° inclined cylinder horizontal shaft
CYLINDER SLEEVE TYPE	Cast iron sleeve
BORE X STROKE	77 x 58 mm
DISPLACEMENT	270 cm ³
COMPRESSION RATIO	8.5 : 1
NET POWER	6.3 kW (8.4 HP) / 3600 rpm
Cont. rated power	4.6 kW (6.2 HP) / 3000 rpm 5.1 kW (6.8 HP) / 3600 rpm

MAX. NET TORQUE	19.1 Nm (1.94 kgfm) / 2500 rpm
IGNITION SYSTEM	Digital CDI with variable ignition timing
STARTER	Recoil (el. start optional)
FUEL TANK CAPACITY	5.3 Liter
FUEL CONS. AT CONT. RATED POWER	2.4 L/h - 3600 rpm
ENGINE OIL CAPACITY	1.1 Liter
DIMENSIONS (L X W X H)	381 x 428 x 422 mm

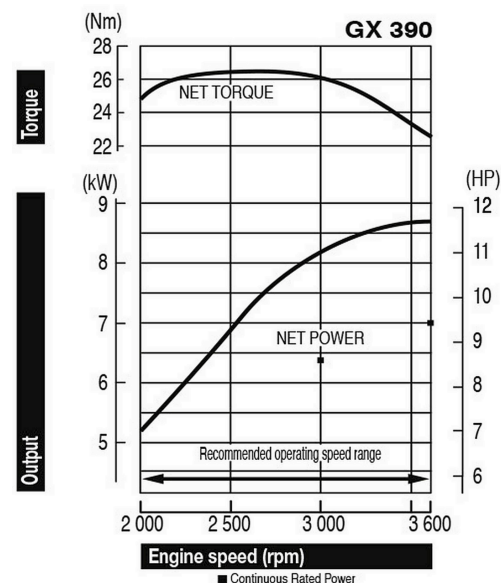


POWERED by HONDA GX390 DIMENSIONS

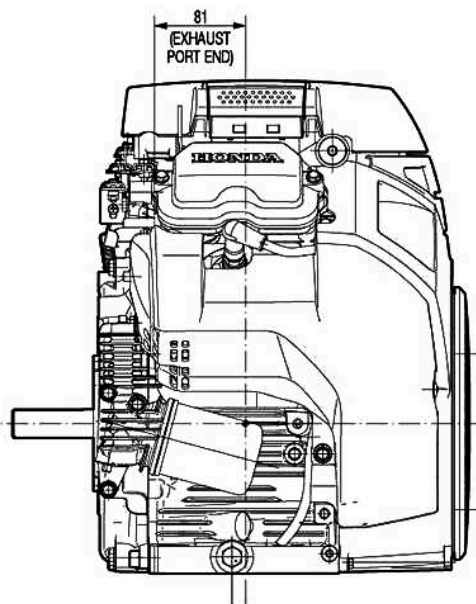
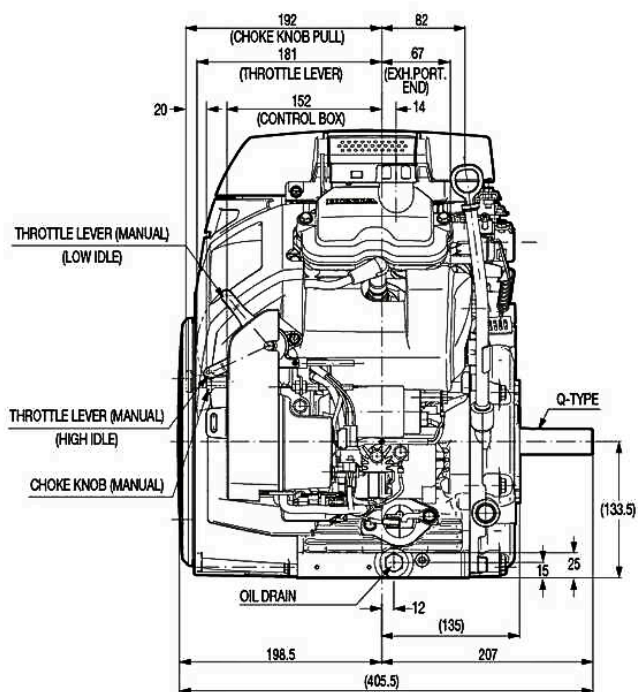
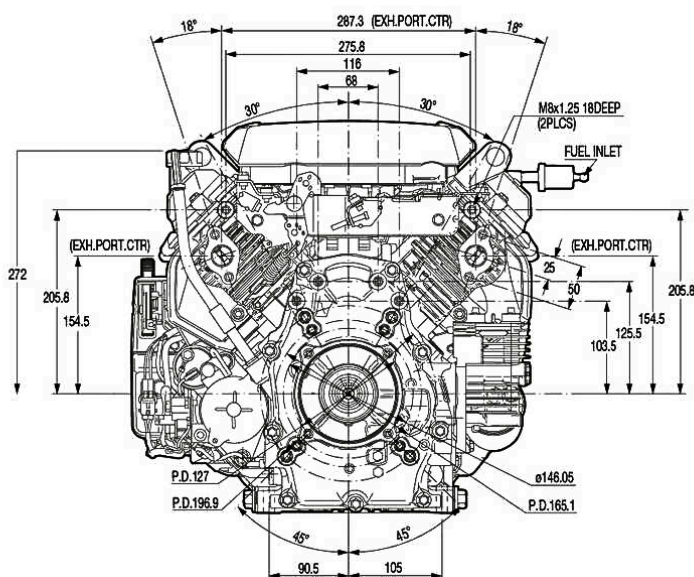
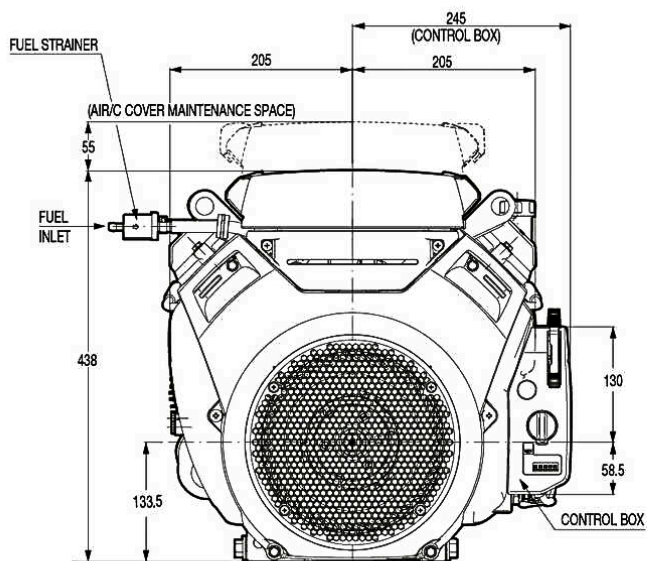


ENGINE TYPE	4-stroke single cylinder OHV petrol engine 25° inclined cylinder horizontal shaft
CYLINDER SLEEVE TYPE	Cast iron sleeve
BORE X STROKE	88 x 64 mm
DISPLACEMENT	389 cm³
COMPRESSION RATIO	8.2 : 1
NET POWER	8.7 kW (11.7 HP) / 3600 rpm
Cont. rated power	6.4 kW (8.6 HP) / 3000 rpm 7.0 kW (9.4 HP) / 3600 rpm

MAX. NET TORQUE	26.5 Nm (2.7 kgfm) / 2500 rpm
IGNITION SYSTEM	Digital CDI with variable ignition timing
STARTER	Recoil (el. start optional)
FUEL TANK CAPACITY	6.1 Liter
FUEL CONS. AT CONT. RATED POWER	3.5 L/h - 3600 rpm
ENGINE OIL CAPACITY	1.1 Liter
DIMENSIONS (L x W x H)	406 x 460 x 448 mm

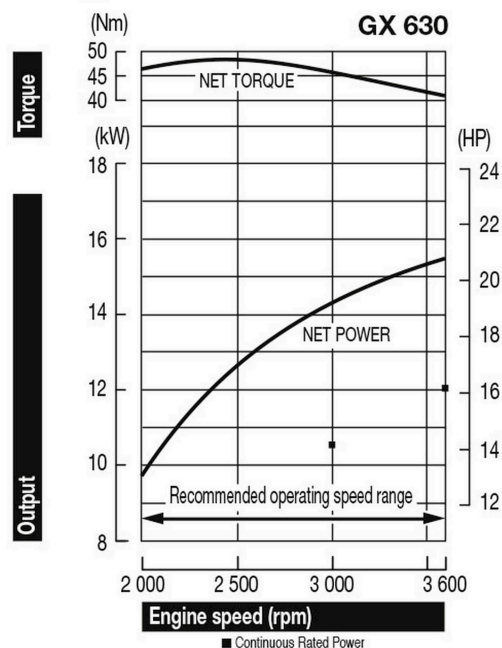


POWERED by HONDA GX630 DIMENSIONS



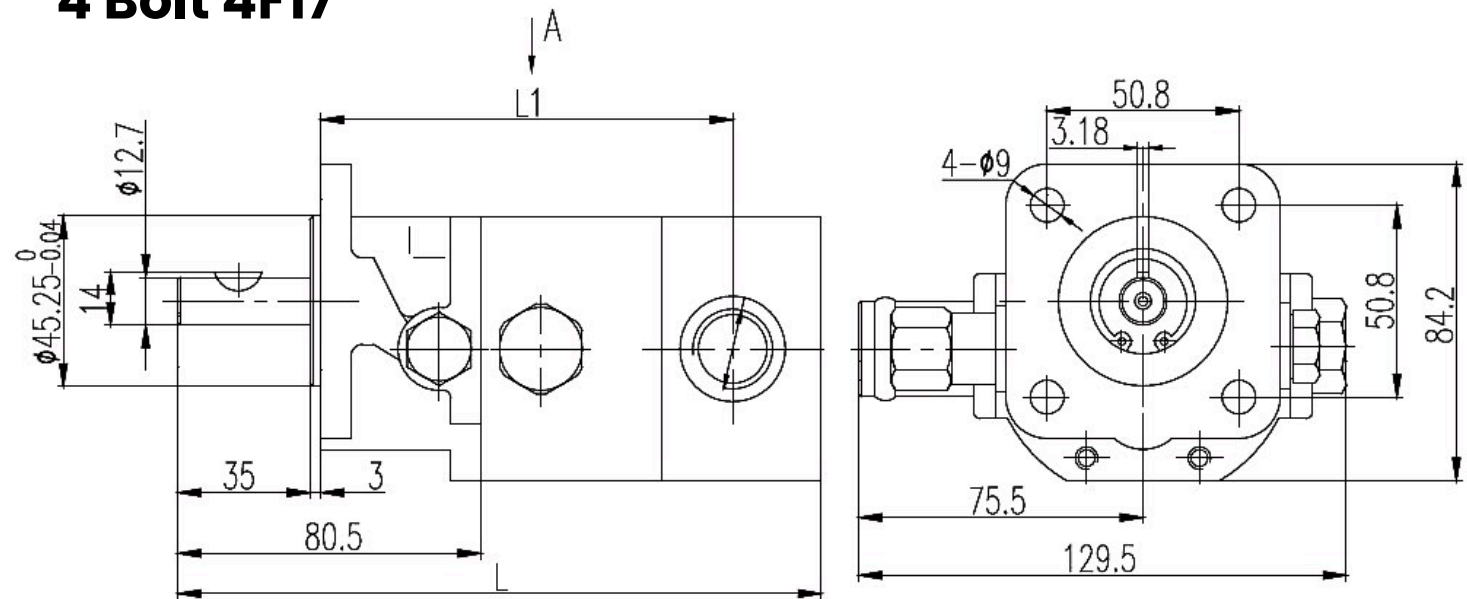
ENGINE TYPE	4-stroke 2-cylinder OHV petrol engine 90° V-twin design horizontal shaft
CYLINDER SLEEVE TYPE	Cast iron sleeve
BORE X STROKE	2 / 78 x 72 mm
DISPLACEMENT	688 cm ³
COMPRESSION RATIO	9.3 : 1
NET POWER	15.5 kW (20.8 HP) / 3600 rpm
Cont. rated power	10.5 kW (14.1 HP) / 3000 rpm 12.0 kW (16.1 HP) / 3600 rpm
Max. net torque	48.3 Nm (4.93 kgfm) / 2500 rpm

IGNITION SYSTEM	Digital CDI with variable ignition timing
CARBURATOR	2-barrel, fuel cut solenoid
LUBRICATION	Full-pressure
STARTER	Electric
FUEL CONS. AT CONT. RATED POWER	6.0 L/h - 3600 rpm
ENGINE OIL CAPACITY	1.7 Liter
DIMENSIONS (L X W X H)	405 x 410 x 438 mm

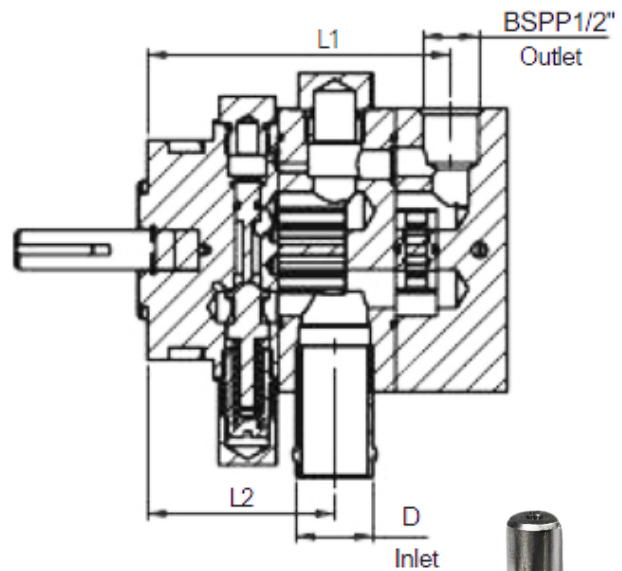
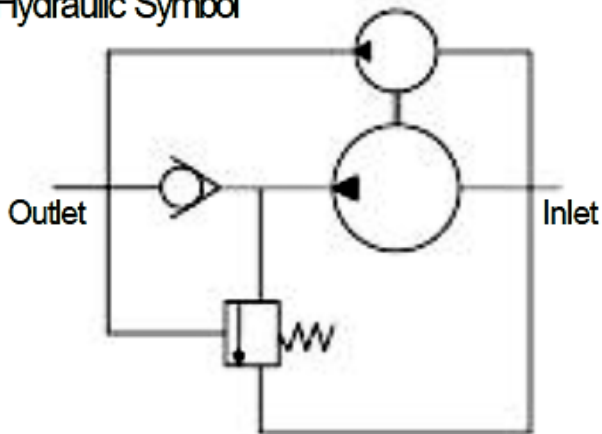


HI LO GEAR PUMP DIMENSIONS

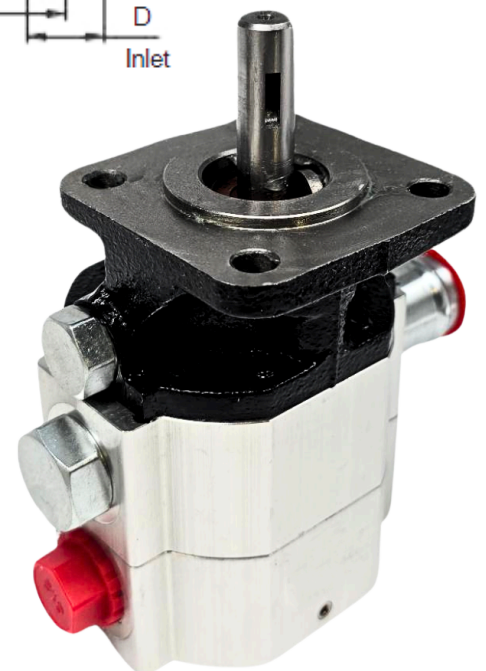
4 Bolt 4F17



Hydraulic Symbol

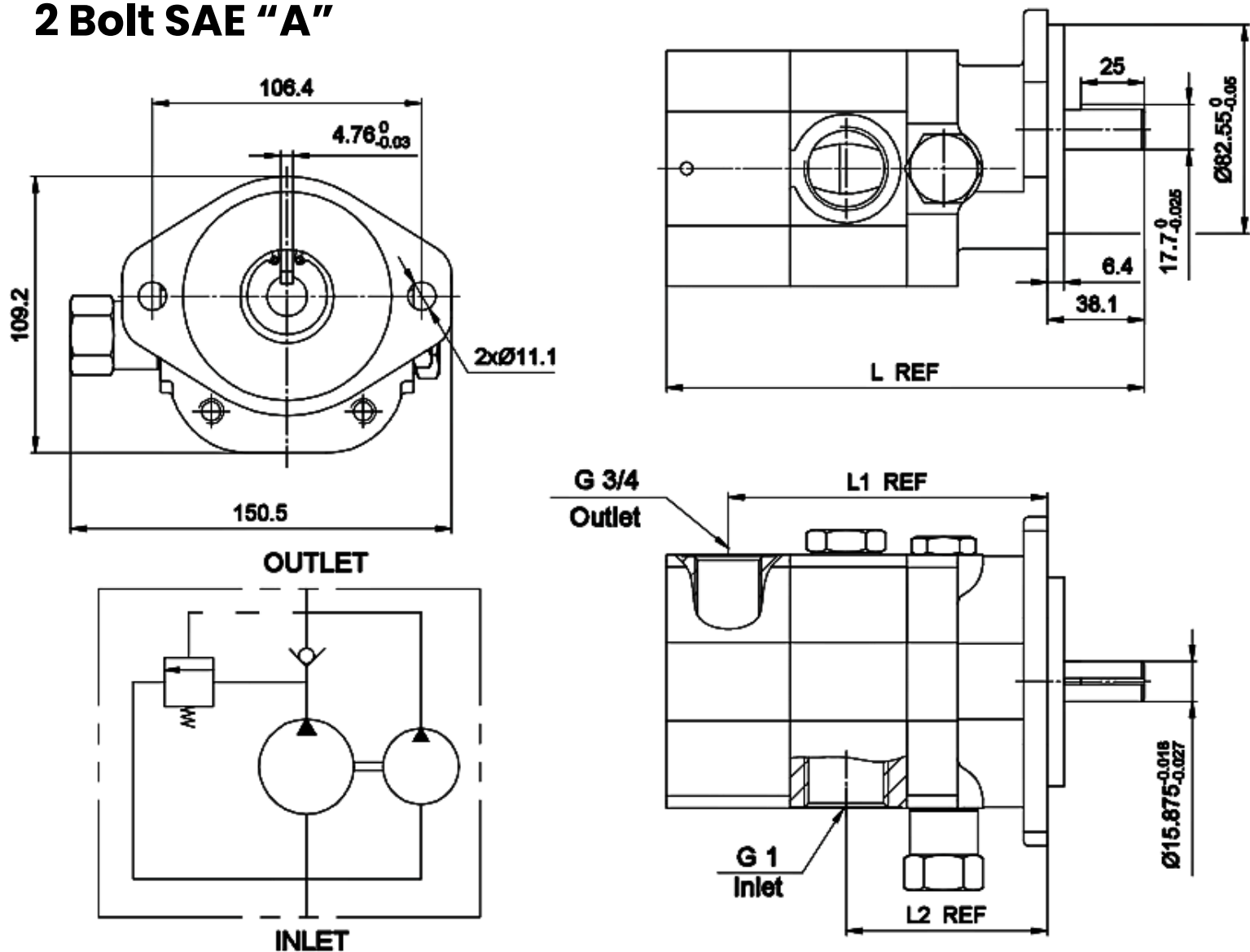


Model	L(mm)	L1(mm)	L2(mm)
GPCBN080PC	154.2	95.2	61.2
GPCBN110PC	167.9	107.6	69.6
GPCBN160PC	180.7	122.1	84.1



HI LO GEAR PUMP DIMENSIONS

2 Bolt SAE "A"

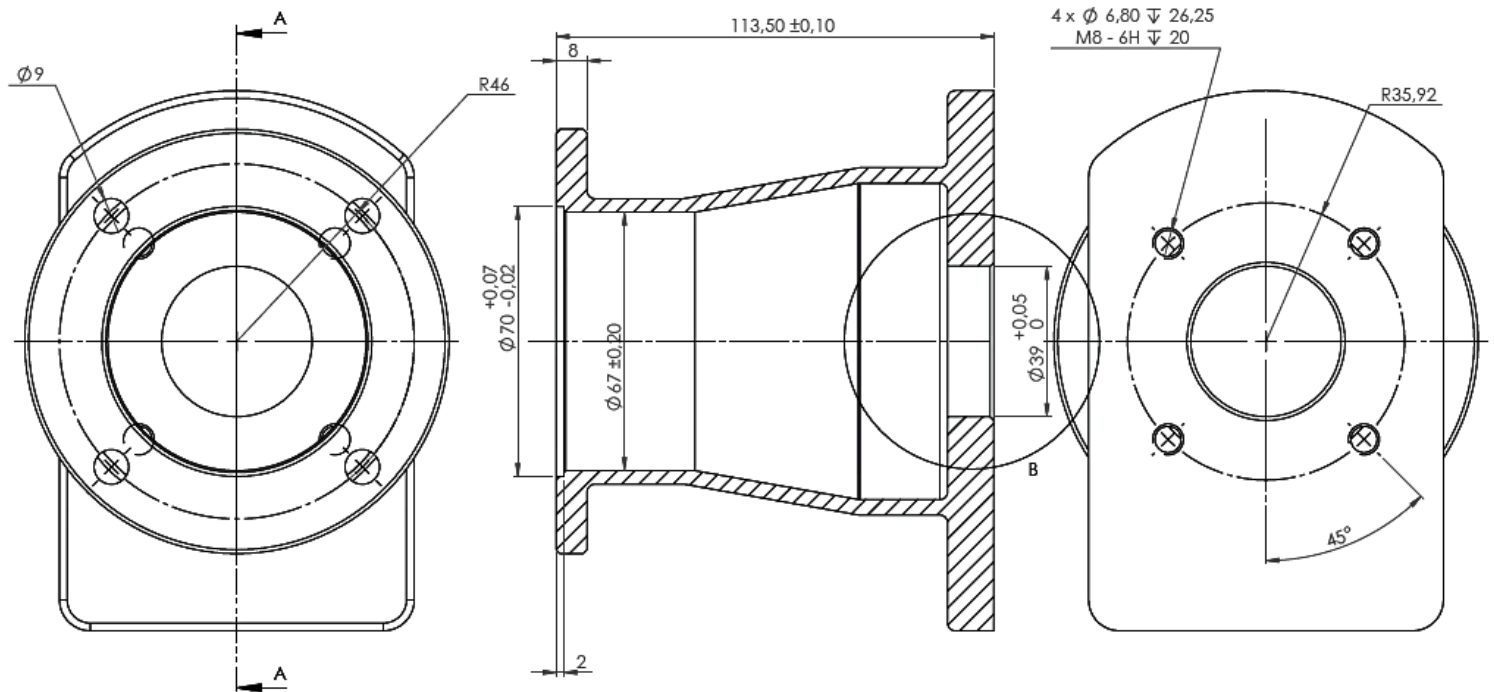


Model	L(mm)	L1(mm)	L2(mm)
GPCBN220PC	188.7	126.1	79.6



HI/LO BELL HOUSINGS & DRIVE COUPLINGS INFORMATION

BHE112/045A

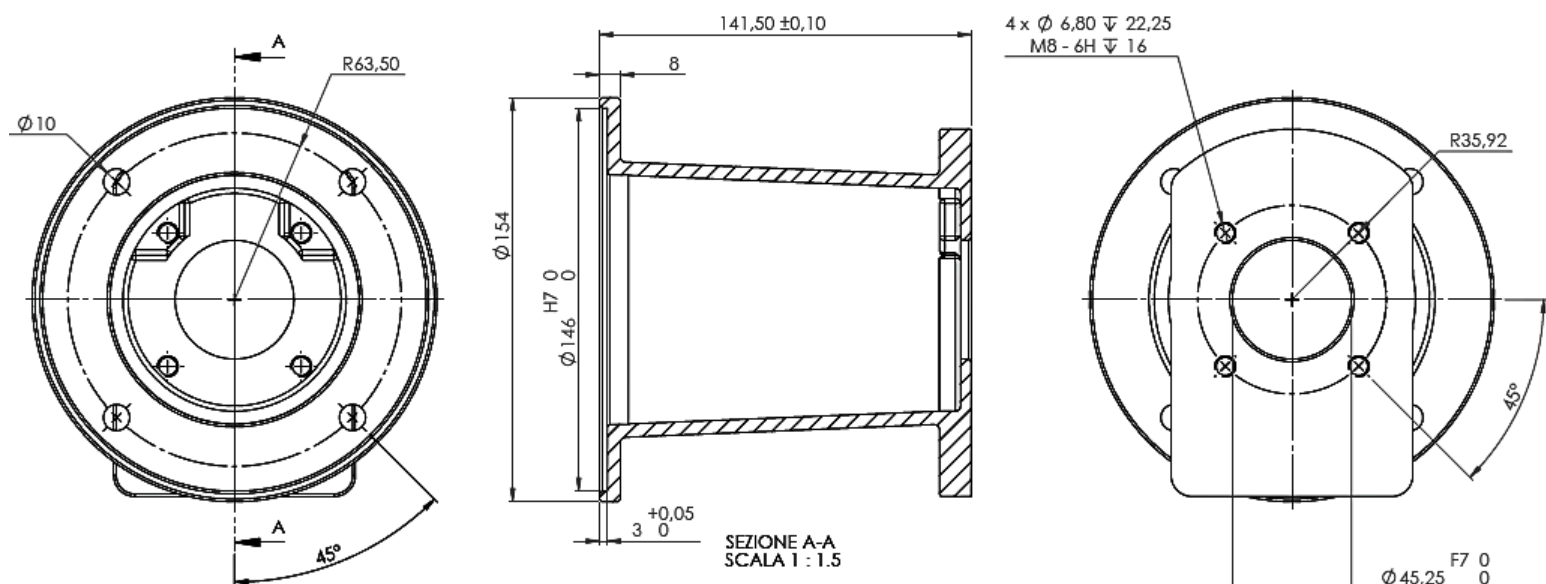


PART NO.	BELL HOUSING	ENGINE COUPLING	PUMP COUPLING
ZZ002406	BHE112/045A	HC219MC048	HC212HB035



HI/LO BELL HOUSINGS & DRIVE COUPLINGS INFORMATION

BHE152/045A



PART NO.	BELL HOUSING	ENGINE COUPLING	PUMP COUPLING
ZZ002408	BHE152/045A	HC325NC048	HC312HB035
ZZ002410			
ZZ018325	BHE152/082A	HC325NC048	HC315MB035

BHE152/082A

