



## FUH015 SERIES

Transfer and filtration portable unit



### TECHNICAL SPECIFICATION

<b>MAIN:</b>	Flow Rate: 15 l/min Operating temperature: from 0 °C to +80 °C Fluid viscosity range: 10-220 cSt
<b>ELECTRIC:</b>	Voltage: 230 V Frequency: 50 - 60 Hz Power consumption: 0.25 kW
<b>FRAME:</b>	Dimensions L, W, H [mm]: 290 x 368 x 533 mm Dry Weight: 16 kg
<b>MATERIALS:</b>	Base frame: Painted steel

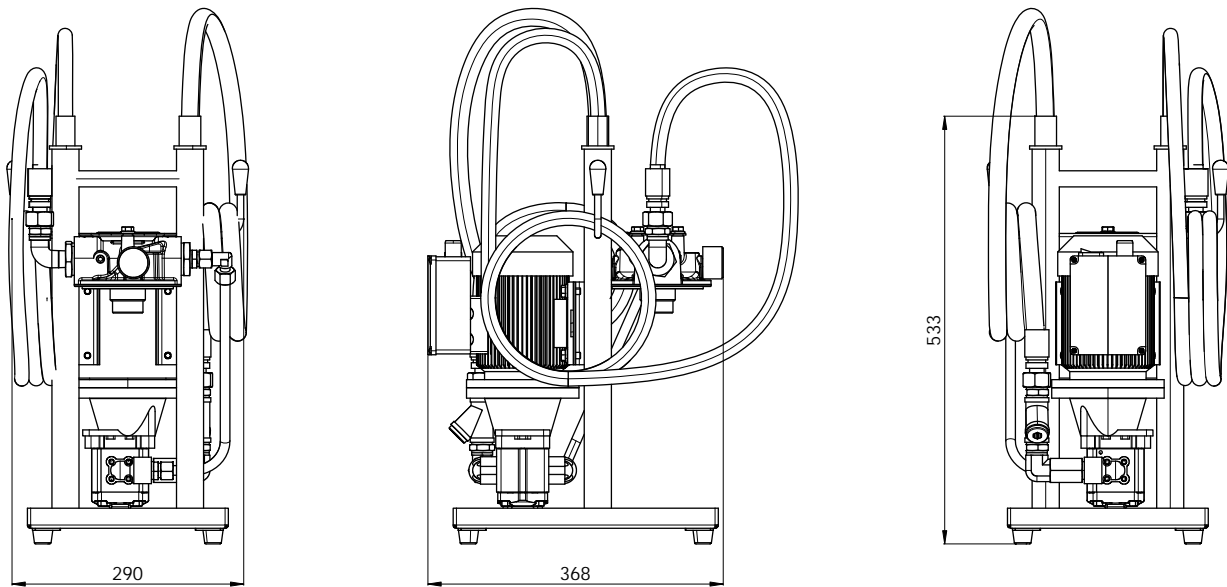
### ELEMENT

	tested according to ISO 11170, 2941, 2942, 2943, 3724, 3968, 16889, 16908, 23181
<b>FILTER MEDIA:</b>	Fiberglass: G03 - G06 - G10 - G25 Fiberglass with water removal: GW03 - GW06 - GW10 - GW25 Paper: C25 Paper with water removal: CW25
<b>FLUID COMPATIBILITY:</b>	Full with HH-HL-HM-HV HETG-HEES (acc. to ISO 6743/4). For use with other fluid please contact Filtrec Customer Service (info@filtrec.it).

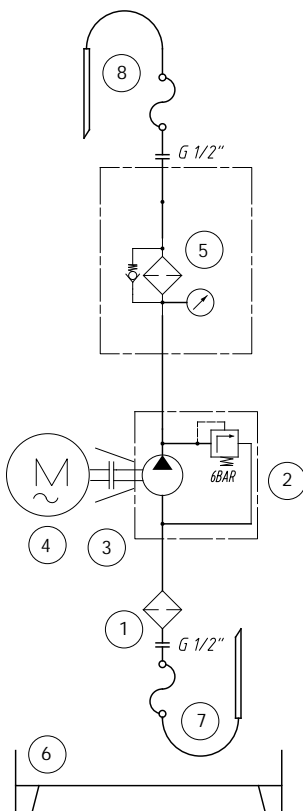
The unit is supplied complete with an Instruction and Maintenance Manual available on our website [www.filtrec.com](http://www.filtrec.com) in the "Hydraulic Filter" section. The unit can be used by authorized operators who have read and understood all of its contents.

The FUH015 filtration unit is certified  

## OVERALL DIMENSIONS



## HYDRAULIC DIAGRAM



- 1 - Suction filter "Y" 500  $\mu$ m
- 2 - Gear pump with + pressure relief valve 6bar
- 3 - Motor - pump coupling
- 4 - Motor
- 5 - Filter
- 6 - Base frame
- 7 - Suction pipes in armorvin + lance L=2m
- 8 - Delivery pipes in armorvin + lance L=2m

## ORDERING INFORMATION FUH015

1.	2.	3.	4.	5.	6.	7.	8.
<b>FUH</b>	<b>015</b>	<b>M</b>	<b>G</b>	<b>0</b>	<b>B</b>	<b>S</b>	<b>0</b>
1. FILTER UNIT	FUH						
2. MODEL	015	flow rate 15 l/min					
3. ELECTRIC MOTOR	M	single phase electric motor, 230V 50-60Hz 0,25 KW					
4. PUMP SIZE	G	gear pump with + pressure relief valve 6bar					
5. FILTER / ELEMENT SIZE	0	1 x A120 - or - 1 x A121 - or- 1 x A150					
6. SEAL	B	NBR					
7. VERSION	S	standard version					
8. OPTION	0	standard option *					

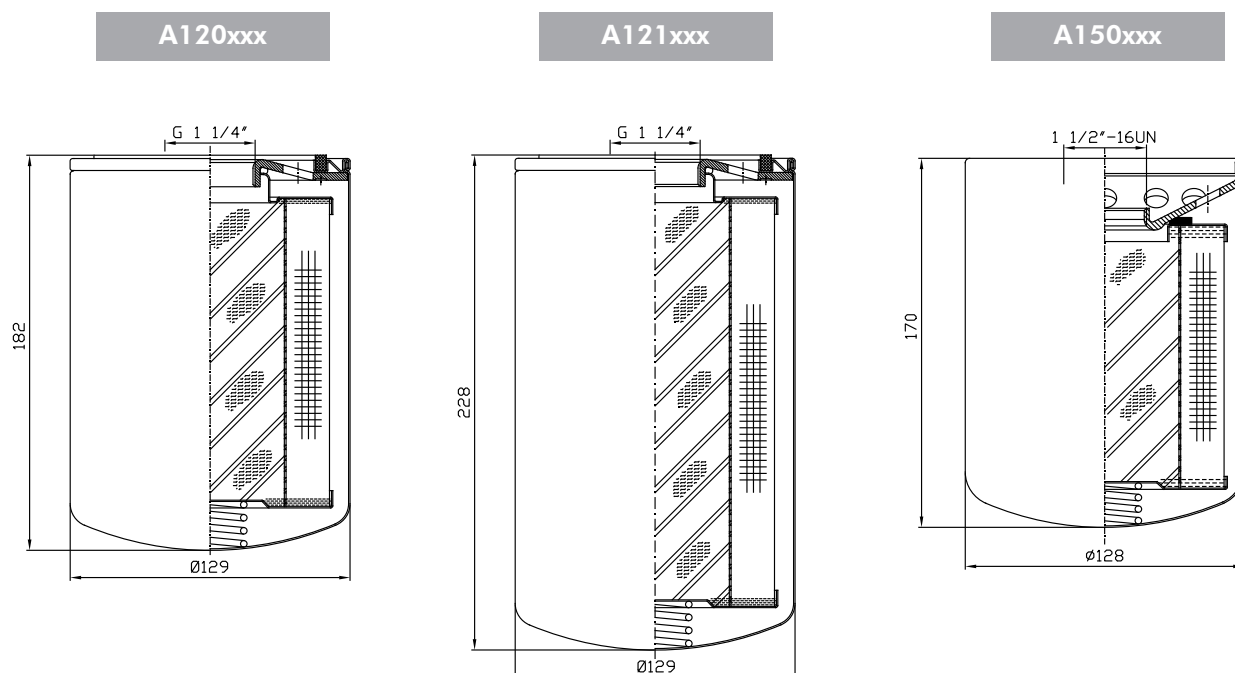
- (\*)
- With cloggin indicator, pressure gauge model MPB
  - Suction filter "Y" 500 µm
  - Support frame with drip tray
  - Suction and delivery pipes in armorvin + lance L=2m
  - 2P+T industrial plug, L=2m

## ORDERING INFORMATION SPARE ELEMENTS

1.	2.	3.	
<b>A1</b>	<b>20</b>	<b>G10</b>	
1. FILTER ELEMENT SERIES	A1		
2. FILTER SIZE	20-21	connection threads G 1 1/4"	
	50	connection threads 1 1/2"-16 UN	
3. FILTER MEDIA	G10	glassfiber $\beta_{12\mu m(c)} > 1.000$	AVAILABLE FILTER MEDIA FOR A120-A121
	G25	glassfiber $\beta_{22\mu m(c)} > 1.000$	
	C25	paper $\beta_{25\mu m(c)} > 2$	
	CW25	paper $\beta_{25\mu m(c)} > 2$ + water absorbent	
	G03	glassfiber $\beta_{5\mu m(c)} > 1.000$	AVAILABLE FILTER MEDIA FOR A150
	G06	glassfiber $\beta_{7\mu m(c)} > 1.000$	
	G10	glassfiber $\beta_{12\mu m(c)} > 1.000$	
	G25	glassfiber $\beta_{22\mu m(c)} > 1.000$	
	GW03	glassfiber $\beta_{5\mu m(c)} > 1.000$ + water absorbent	
	GW06	glassfiber $\beta_{7\mu m(c)} > 1.000$ + water absorbent	
	GW10	glassfiber $\beta_{12\mu m(c)} > 1.000$ + water absorbent	
	GW25	glassfiber $\beta_{22\mu m(c)} > 1.000$ + water absorbent	
	C25	paper $\beta_{25\mu m(c)} > 2$	
	CW25	paper $\beta_{25\mu m(c)} > 2$ + water absorbent	

**FILTER ELEMENT** - Preferred models - For the complete range of elements available, refer to the FA1 series catalog for size 20 and 21, and catalog FAH-A150 for size 50.

## OVERALL DIMENSIONS FILTER ELEMENT



## USER TIPS

The filter element must be replaced when:

1. the oil transfer is completed (if used as oil transfer unit).
2. the target cleanliness class is reached (when used as off line filtration unit); more filter elements could be necessary to reach it, depending on the oil volume to be cleaned and from the initial contamination level.
3. the clogging indicator shows.
4. a different filter media is required. We recommend a fine filtration; filter elements for water removal available when needed.

The unit is supplied complete with an Instruction and Maintenance Manual available on our website [www.filtrec.com](http://www.filtrec.com) in the "Hydraulic Filter" section. The unit can be used by authorized operators who have read and understood all of its contents.

