



FU1250 & FU2550

Hydraulic oil transfer and filtration mobile unit


TECHNICAL INFORMATION

FRAME

SUPPORT FRAME AND FILTER HOUSING:	Carbon steel, painted, mounted on 4 wheels (2 are lockable).
THREE PHASE ELECTRIC MOTOR:	1,1 kW, 4 poles, 230/440 V 50 Hz for FU1250 3 kW, 2 or 4 poles, 230/440 V 50 Hz for FU2550
PUMP PROTECTION:	Y type filter, 500 μ m.
OVERALL DIMENSIONS (LxPxH):	700 x 1.050x 1.250 mm for FU1250 700 x 1.050 x 1.400 mm for FU2550
WEIGHT:	kg 155 approx for FU1250 kg 175 approx for FU2550

ELEMENT

tested according to ISO 2941, 2942, 2943, 3968, 16889, 23181

 A filter element must be fitted in the filter housing before start: See page 3.

OPERATING TEMPERATURE RANGE:	0°C +80°C
FLUID COMPATIBILITY:	Full with HH-HL-HM-HV (acc. To ISO 2943). For use with other fluid please contact Filtrec Customer Service (info@filtrec.it). Viscosity: from 30 cSt to 1000 cSt For use with other fluids please contact the FILTREC Customer Service (info@filtrec.it)

The unit is supplied complete with a Use and Maintenance Manual and it can be used only by authorized operators, that have read and understood completely the Manual.

The FU units are CE certified

ORDERING INFORMATION

1.	2.	3.	4.	5.	6.	7.
FU	1250	4	T	040	B	01

1. FILTER SERIES	FU	
2. MODEL	1250	fits 1x RU1250 filter element
	2550	fits 1x RU2550 filter element
3. ELECTRIC MOTOR	2	2 poles electric motor (FU2550 only)
	4	4 poles electric motor
4. ELECTRIC MOTOR	T	three phase electric motor
5. FLOW RATE	040	flow rate 40 l/min (FU12504T)
	080	flow rate 80 l/min (FU25504T)
	160	flow rate 160 l/min (FU25502T)
6. SEALS	B	NBR
7. VERSION	00	STD version

FILTER ELEMENTS

The filter element must be replaced:

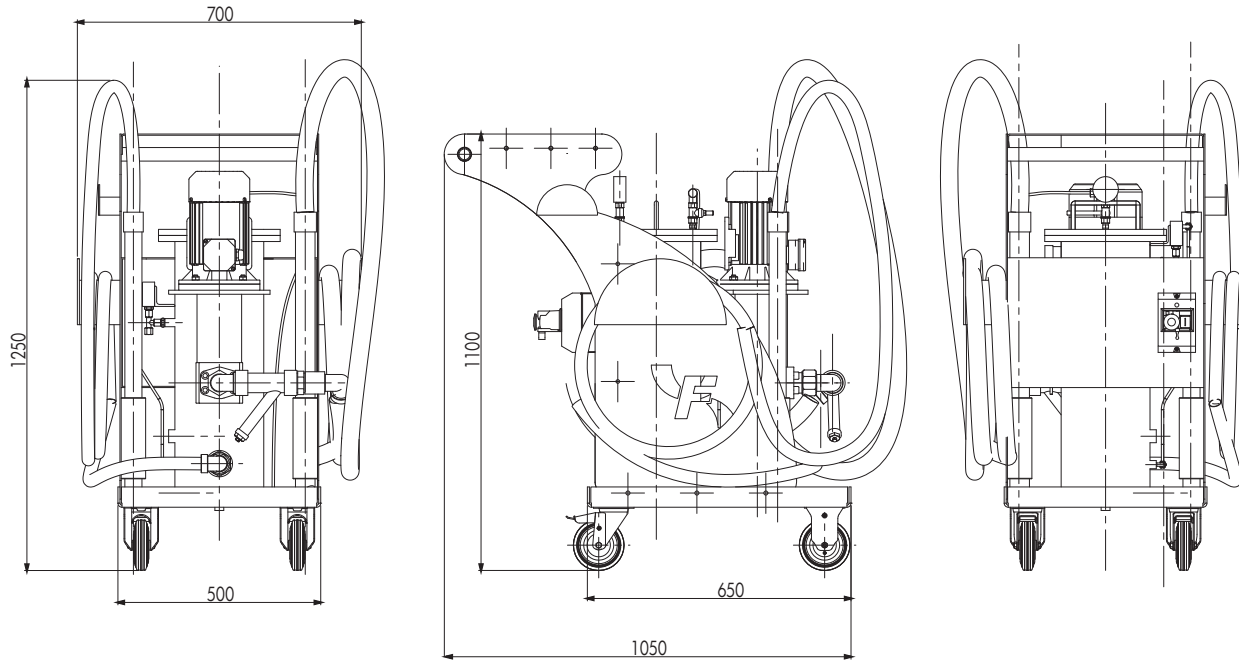
1. When the oil transfer is completed (when used as oil transfer unit).
2. When the target cleanliness class is reached (when used as off line filtration unit); (more filter elements could be necessary to reach it, depending on the oil volume to be cleaned and from the initial contamination level).
3. When both the differential pressure indicators show the red sector.
4. When a different filter media is required.



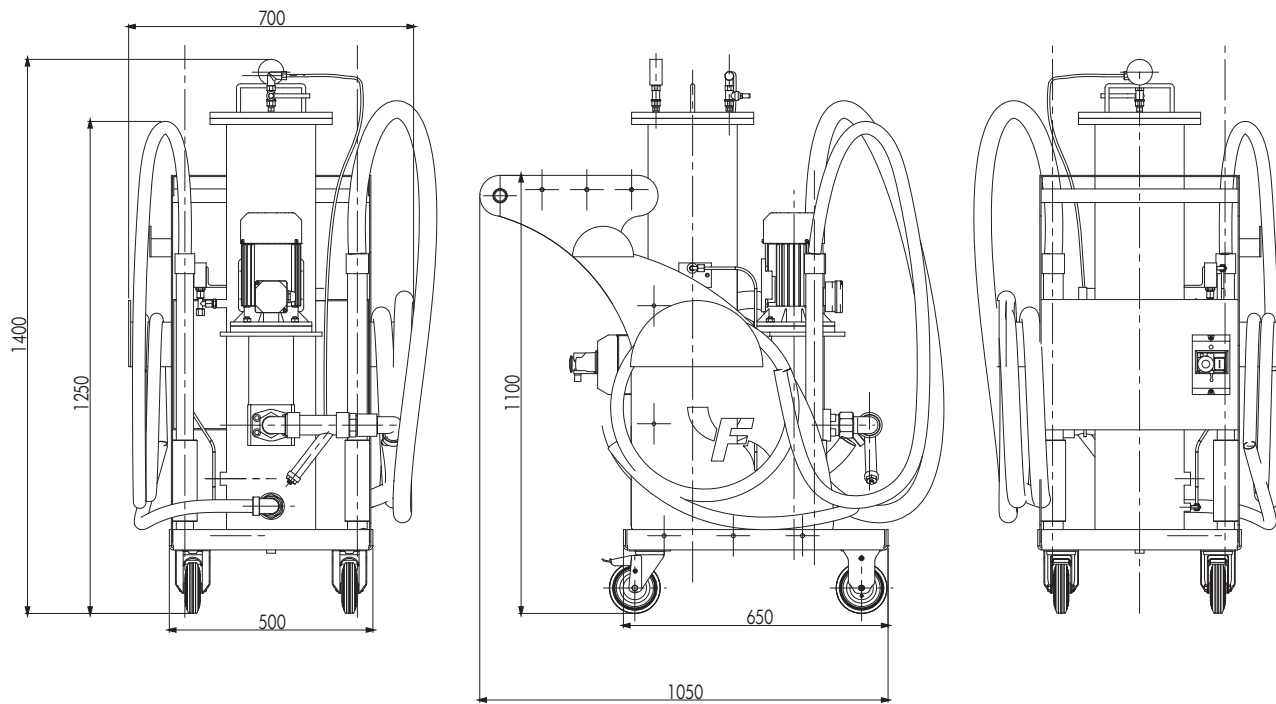
FILTER ELEMENT	FITS	FILTRATION
RU1250G03B	FU1250	glassfiber $\beta_{4,5 \mu m (c)} \geq 1000$
RU1250G10B	FU1250	glassfiber $\beta_{12 \mu m (c)} \geq 1000$
RU1250GW10B	FU1250	glassfiber $\beta_{12 \mu m (c)} \geq 1000$ +water absorber
RU2550G03B	FU2550	glassfiber $\beta_{4,5 \mu m (c)} \geq 1000$
RU2550G10B	FU2550	glassfiber $\beta_{12 \mu m (c)} \geq 1000$
RU2550GW10B	FU2550	glassfiber $\beta_{12 \mu m (c)} \geq 1000$ +water absorber

OVERALL DIMENSIONS

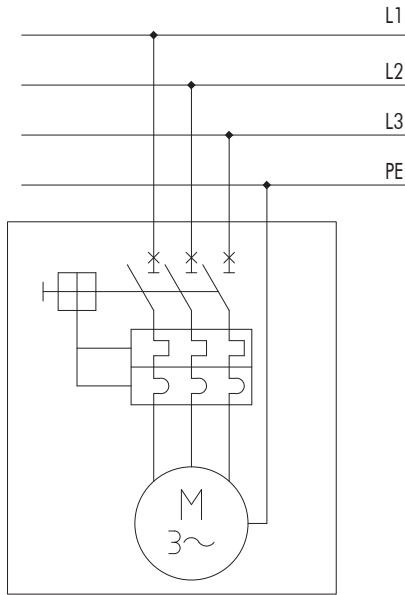
"FU1250**00"



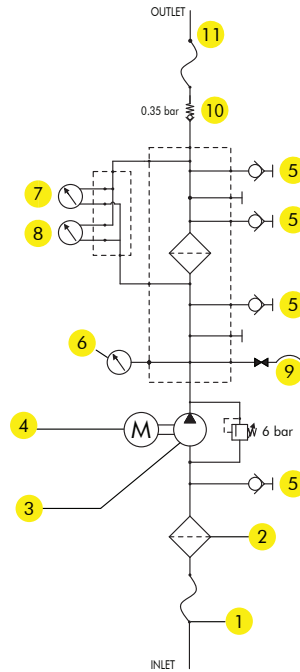
"FU2550**00"



ELECTRIC DIAGRAM



HYDRAULIC SCHEME



COMPONENT LIST

ITEM	DESCRIPTION	MODEL		
		FU12504T	FU25504T	FU25502T
1	Inlet flexible hose, dia, length, with rigid ends	TF-IN-42-5000	TF-IN-48-5000	TF-IN-60-5000
2	Suction filter "Y" type	1" ¼ Y filter	1" ½ Y filter	2" Y filter
3	Screw pump (l/min) with integrated safety valve	Screw pump 40 l/min	Screw pump 80 l/min	Screw pump 160 l/min
4	Electric motor	TR_4P_kW1,1_V230/440	TR_4P_kW3_V230/440	TR_2P_kW3_V230/440
5	Sampling port Minimes type	1620 ISO228 G1/4"		
6	Pressure gauge	213-53-63 0-16 bar G1/4" rad.		
7	Visual clogging indicator 2,5 bar	V02		
8	Visual clogging indicator 5 bar	V05		
9	Air drain valve complete with microhose	ART1800		
10	Check valve	VU114-5PSI		
11	Outlet flexible hose, dia, length, with rigid ends	TF-OUT-42-5000		

