

ENGINE DRIVEN LOG SPLITTER STARTER KITS

Flowfit's Engine-Driven Log Splitter Kits are designed to provide a complete, ready-to-use solution for powerful and efficient log splitting. These kits include a high-performance engine along with all the necessary components to ensure seamless operation and reliability.

Available in three distinct variants: Compact, Evolution, and Classic.

COMPACT



EVOLUTION



CLASSIC



TYPE	INLET/OUTLET PORTS	WORKING PORTS	MAX FLOW (LPM)	MAX PRESSURE (PSI)	RELIEF VALVE	KICK OFF PRESSURE	WEIGHT
COMPACT (ZZ005421)	3/4" BSP	1/2" BSP	81	3265 (225 BAR)	Adjustable, preset at 2,750 PSI (189 BAR)	Non-adjustable, preset at 800 PSI (55 BAR)	2.2Kg
EVOLUTION (LS305NBA42)	3/4" BSP	1/2" BSP	136	3625 (230 BAR)	Adjustable, preset at 2,250 PSI (155 BAR)	Non-adjustable, preset at 800 PSI (55 BAR)	4.5Kg
CLASSIC (LS255BBA43)	3/4" BSP	1/2" BSP	113	2750 (189 BAR)	Adjustable, preset at 2,250 PSI (155 BAR)	Adjustable from 1000-2600 PSI (179 BAR), preset at 1400 PSI (96 BAR)	4.5Kg

AUTO KICK OUT VALVE

- Constructed of high tensile strength gray cast iron
- Built-in adjustable relief valve
- Hard chrome plated spool

RECOMMENDED HYDRAULIC SYSTEM

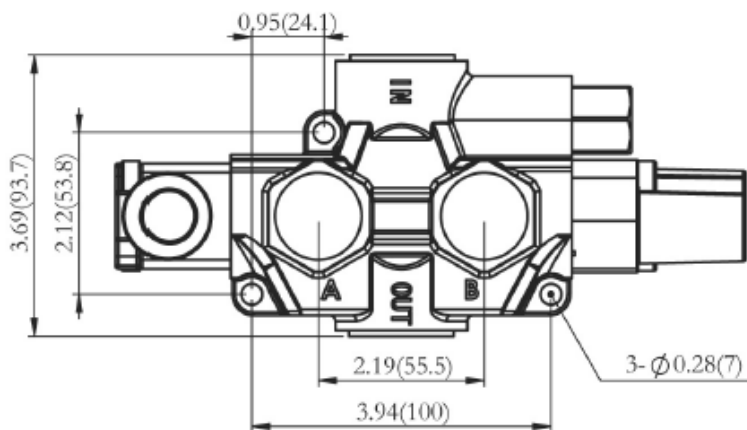
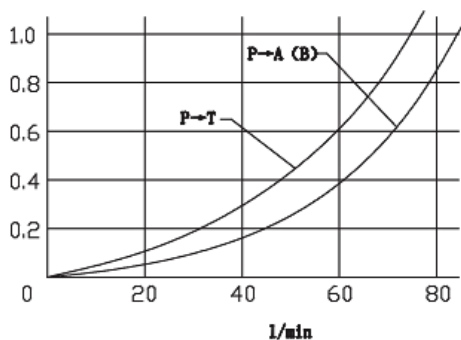
- Maximum tank pressure: 500 PSI (35 BAR)
- Maximum operating temperature: 180°F
- Recommended system filtration: 10 micron

STANDARD FEATURES

- Maximum LPM: 81
- Maximum operating pressure : 3,000 PSI (207 BAR)
- Spool action is spring centre/hydraulic kick-off
- Built-in relief valve preset at 1,800 PSI (124 BAR)
- Kick-off pressure is non-adjustable, preset at 800 PSI (55 BAR)
- Handle can be installed in "up" or "down" position

Pressure Drop

ΔP MPa



COMPACT

PART NUMBER	INLET/OUTLET PORTS	WORKING PORTS	MAX FLOW (LPM)	MAX PRESSURE (PSI)	RELIEF VALVE	KICK OFF PRESSURE	WEIGHT
ZZ005421	3/4" BSP	1/2" BSP	81	3265 (225 BAR)	Adjustable, preset at 2,750 PSI (189 BAR)	Non-adjustable, preset at 800 PSI (55 BAR)	2.2Kg

AUTO KICK OUT VALVE

- Constructed of high tensile strength gray cast iron
- Built-in adjustable relief valve
- Hard chrome plated spool

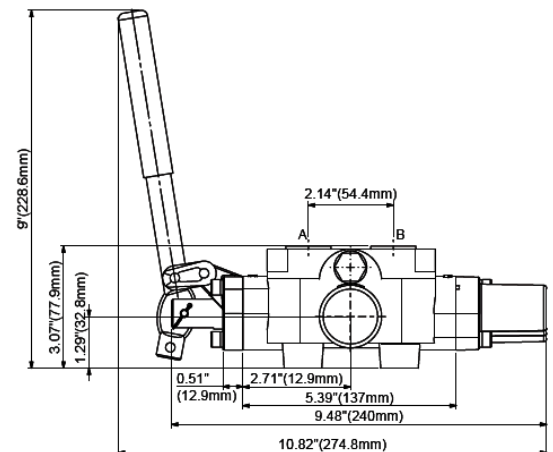
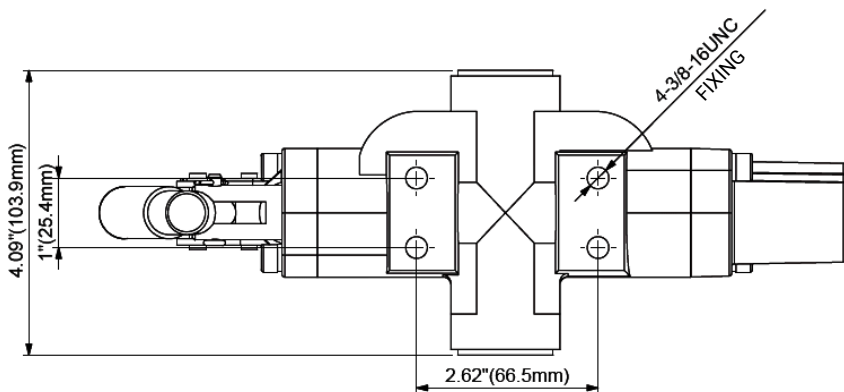
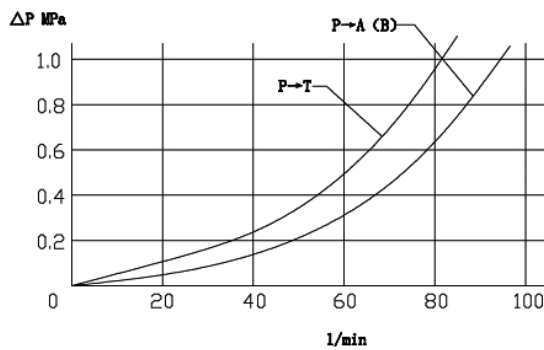
RECOMMENDED HYDRAULIC SYSTEM

- Maximum tank pressure: 500 PSI (35 BAR)
- Maximum operating temperature: 180°F
- Recommended system filtration: 10 micron

STANDARD FEATURES

- Maximum LPM: 136
- Maximum operating pressure : 3,500 PSI (241 BAR)
- Spool action is spring centre/hydraulic kick-off
- Built-in relief valve preset at 1,800 PSI (124 BAR)
- Kick-off pressure is non-adjustable, preset at 800 PSI (55 BAR)
- Handle can be installed in "up" or "down" position

Pressure Drop



EVOLUTION



PART NUMBER	INLET/OUTLET PORTS	WORKING PORTS	MAX FLOW (LPM)	MAX PRESSURE (PSI)	RELIEF VALVE	KICK OFF PRESSURE	WEIGHT
LS305NBA42	3/4" BSP	1/2" BSP	136	3625 (230 BAR)	Adjustable, preset at 2,250 PSI (155 BAR)	Non-adjustable, preset at 800 PSI (55 BAR)	4.5Kg

AUTO KICK OUT VALVE

- Constructed of high tensile strength gray cast iron
- Built-in adjustable relief valve
- Hard chrome plated spool

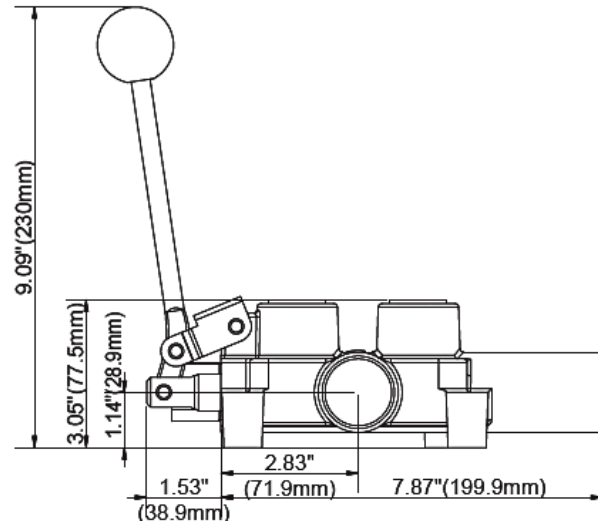
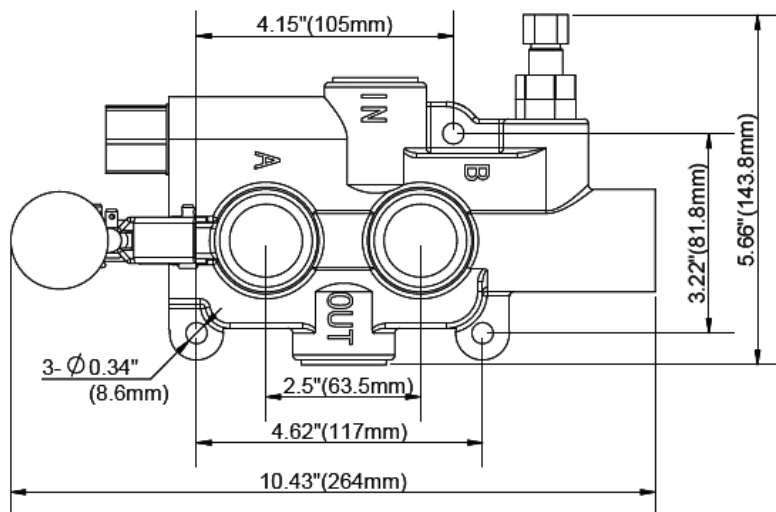
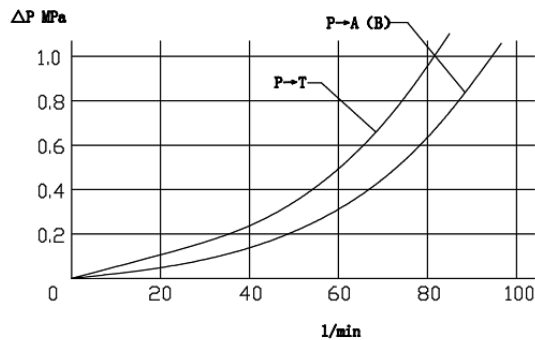
RECOMMENDED HYDRAULIC SYSTEM

- Maximum tank pressure: 500 PSI (35 BAR)
- Maximum operating temperature: 180°F
- Recommended system filtration: 10 micron

STANDARD FEATURES

- Maximum LPM: 113
- Maximum operating pressure : 3,500 PSI (241 BAR)
- Built-in relief valve preset at 2,250 PSI (155 BAR)
- Kick-off pressure adjustable from 1000-2600 psi (179 BAR), at 1400 psi (96 BAR)
- Automatically kicks back to neutral when cylinder completes stroke
- Handle can be installed in "up" or "down" position

Pressure Drop



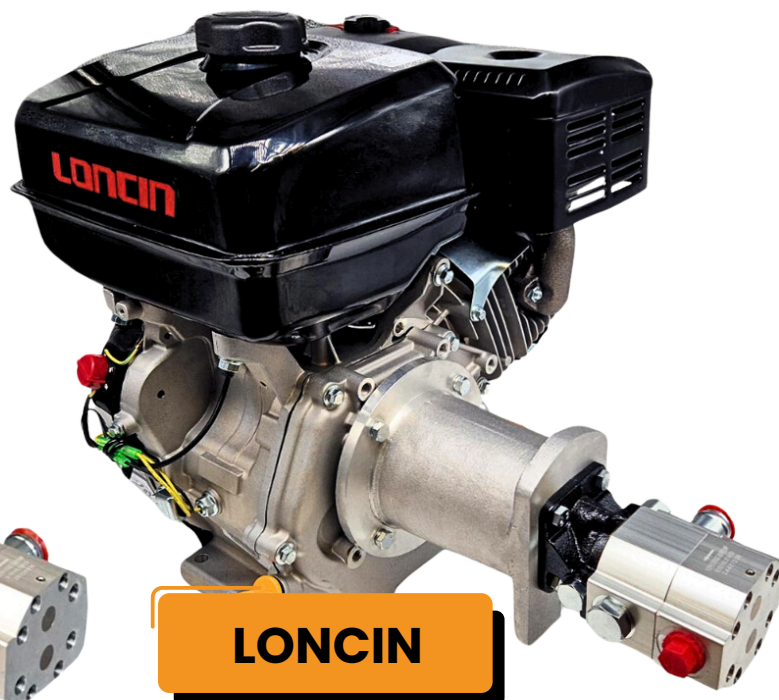
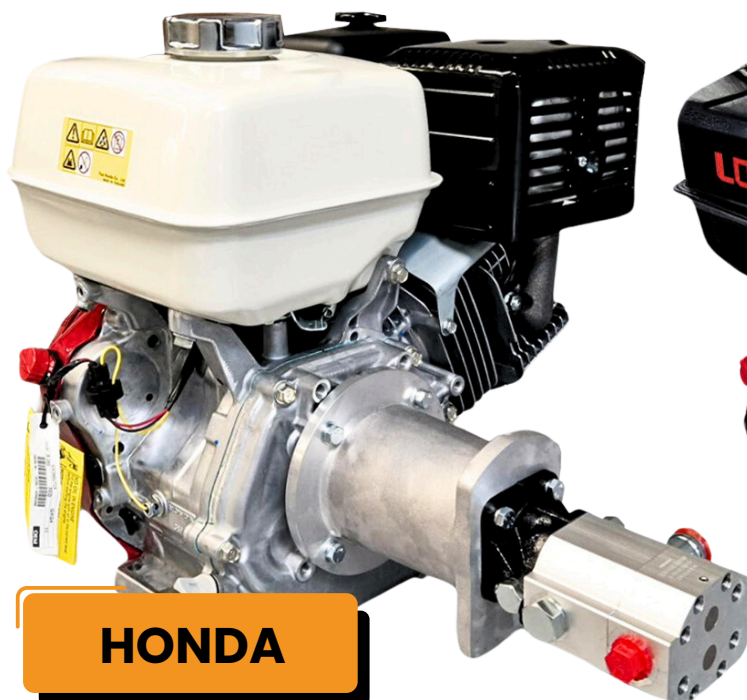
CLASSIC



PART NUMBER	INLET/OUTLET PORTS	WORKING PORTS	MAX FLOW (LPM)	MAX PRESSURE (PSI)	RELIEF VALVE	KICK OFF PRESSURE	WEIGHT
LS255BBA43	3/4" BSP	1/2" BSP	113	2750 (189 BAR)	Adjustable, preset at 2,250 PSI (155 BAR)	Adjustable from 1000-2600 PSI (179 BAR), preset at 1400 PSI (96 BAR)	4.5Kg

PETROL ENGINES

HI LO GEAR PUMP



ENGINE HP	FLOW L/MIN		HI LO GEAR PUMP
	(AT LOW PRESSURE)	(AT HIGH PRESSURE)	
6.5	30.2	7.56	8GPM
9.5	44.6	12.96	11GPM
13	61.5	15.12	16GPM
20	83.7	25.3	22GPM



Engines come equipped with a HI-LO pump, appropriate bell housings, Filtrec elements, a level indicator, and a filler breather.

DOUBLE ACTING CYLINDERS

STANDARD



TONNAGE @ 200BAR + 3000RPM	CYLINDER BORE (MM)	STROKE (MM)
7.7	70	400
10	80	500
15.7	100	500
22.5	120	500

SPECIALISED



ADVANTAGES

- REAR BASE PORT FOR EASE OF ACCESS
- REDUCED ROD DIAMETER FOR AXE ENGAGEMENT
- PRE FITTED WITH 4 BOLT MOUNTING FLANGE
- OVERSIZED ROD FOR DURABILITY & FAST RETRACTION
- 3265 MAX PRESSURE / NON-ADJUST KICK OUT

**PAINTED
VERSION
AVAILABLE**

TONNAGE @ 200BAR + 3000RPM	CYLINDER BORE (MM)	STROKE (MM)
7.7	70	550
10	80	650
12.7	90	650