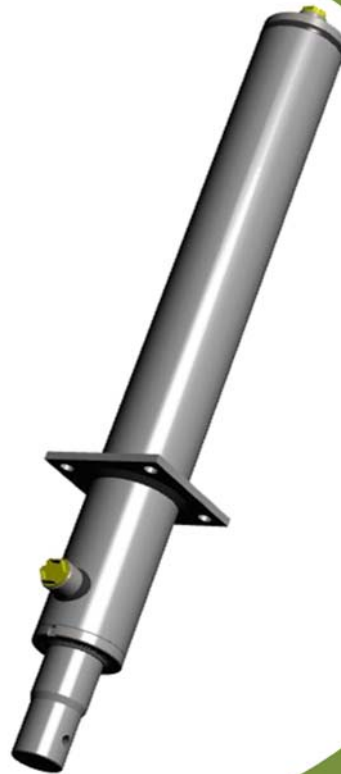


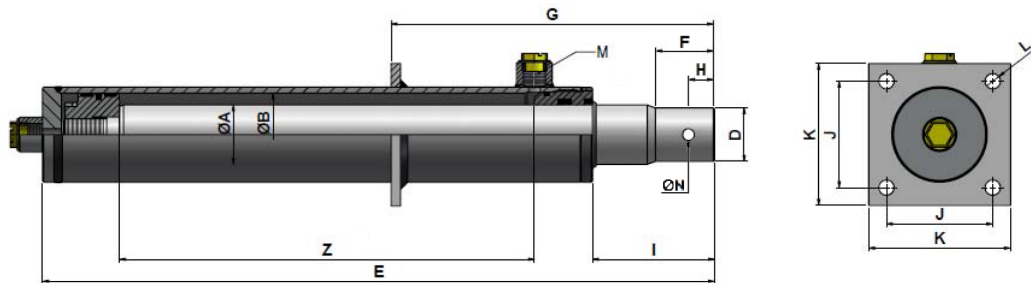
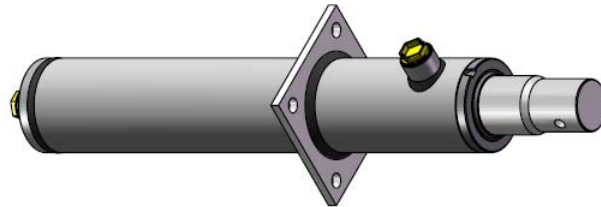
HYDRAULIC CYLINDERS FOR WOOD-SPLITTING MACHINES



HYDRAULIC CYLINDERS:

Cylinder	Ørod	Øpiston	stroke
Mod. A	50	70	550mm
Mod. B	60	80	650mm
Mod. C	70	90	650mm

HYDRAULIC CYLINDERS



Finishing: not painted

Ref.	ØA	ØB	Z	ØD	E	F	G	H	I	J	K	ØL	M	N	M	Wt. (kg)
RAC5070550A	50	70	550	45	767	50	170	22	103	90	120	13	G1/2"	10	G1/2"	19,65
RAC6080650B	60	80	650	55	866	50	170	22	112	100	160	14	G1/2"	10	G1/2"	34,85
RAC7090650C	70	90	650	55	878	50	170	22	112	100	160	15	G3/4"	12	G3/4"	44,00

The Wood-splitter cylinder features a reduction on the rod to engage the axe, plus a pin hole for the fixing pin.

It also features a square flange with 4 mounting holes to fix the cylinder to a structure.

And bottom oil-port is placed at the rear of the cylinder. This is for not to interfere if you slide the cylinder inside a metal structure.