

Quick Release Couplings (ISO A Norm)

**HYDRAULIC
COMPONENTS**

CAM IA (F/M) Series

Flat mating surfaces easily wiped clean to prevent contamination and spillage during connection/disconnection. Connection is made by pushing the male coupling and disconnection by pulling back the sleeve of the female. Positive, quick connection of the male into the female by the latching ball system. Shut-off by flat valve.

Threads: BSP, NPT (on request)

Operating Temperature: -30°C up to +110°C (for other temperatures the coupling is assembled with the specified seals)

Body and Probe - All steel construction, stressed components nitrided or induction hardened
Finish - Zinc Plated in accordance with EEC directive 2000/53/CE

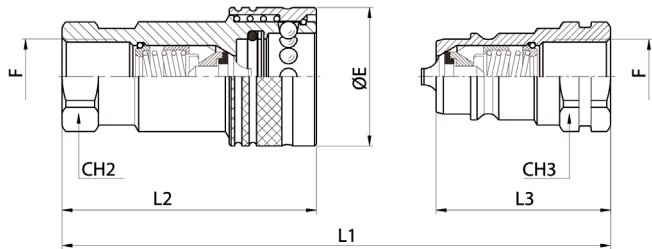
(Chrome 6 free)

Seals - NBR standard. EPDM, Viton and Neoprene on request.

(SCBX Viton as standard)

Backing Ring - Telfon

Springs - C98 steel or stainless steel



Nominal Size		Max Working Pressure (bar)	Rated Flow (l/min)	Min. Burst Pressure			Fluid Spillage (CC)
ISO	mm			Male (bar)	Female (bar)	Coupled (bar)	
6.3	04	350	5	2000	1500	1500	0.7
10	06	350	35	1400	1500	1500	1.4
12.5	08	300	75	1250	1500	1500	1.8
20	12	250	147	1000	1200	1000	7
25	16	250	250	1000	1000	1000	11

F	ISO	CH2	CH3	ØE	L1	L2	L3	Carrier Half Part Number	Probe Half Part Number
1/4"	6.3	17	17	24	69.1	48.8	34.5	CAM IAF 0404	CAM IAM 0404
3/8"	10	22	22	30	80.3	57.8	40	CAM IAF 0606	CAM IAM 0606
1/2"	12.5	27	27	38	90.2	67	45	CAM IAF 0808	CAM IAM 0808
3/4"	20	34	34	45	113.3	83.5	56.5	CAM IAF 1212	CAM IAM 1212
1"	25	41	41	52	129.7	97.9	64.5	CAM IAF 1616	CAM IAM 1616