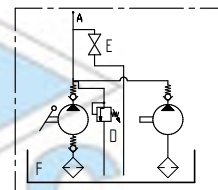


Sistema pompante a "sforzo zero" "Zero effort system"

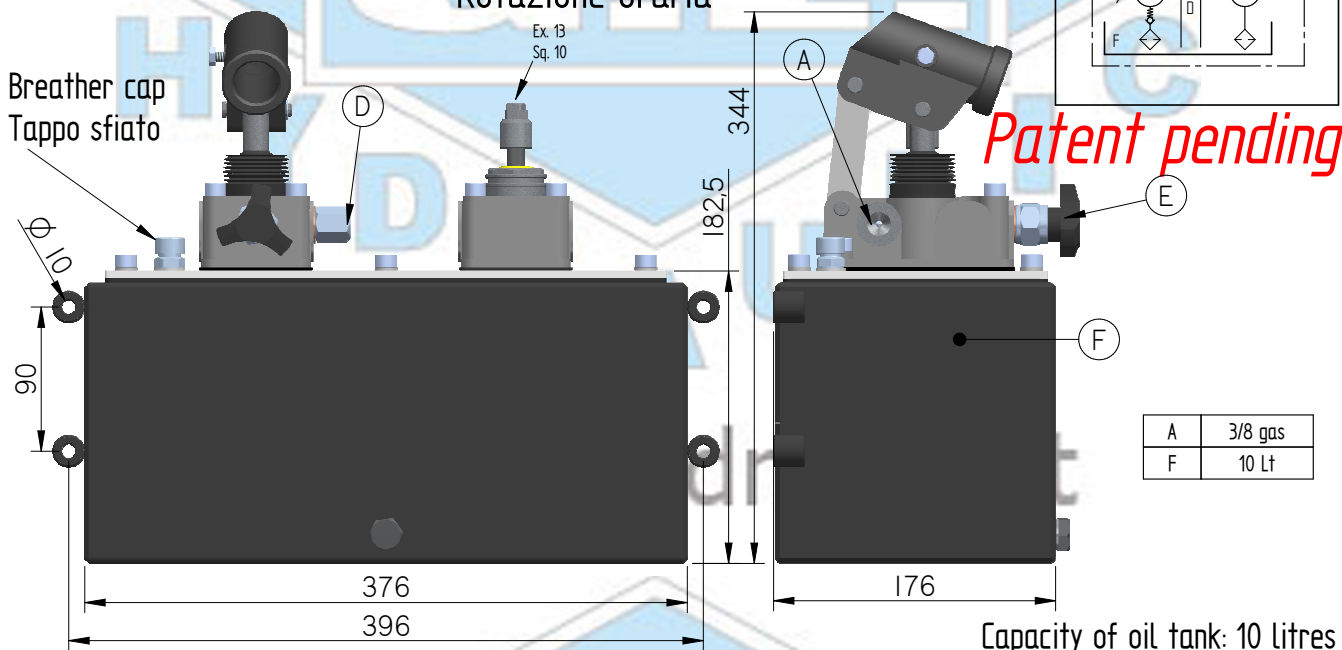
ZES

For single acting cylinder

For single acting cylinder
Per cilindro a semplice effetto



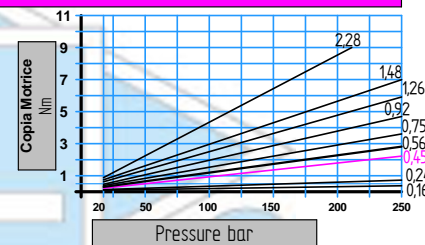
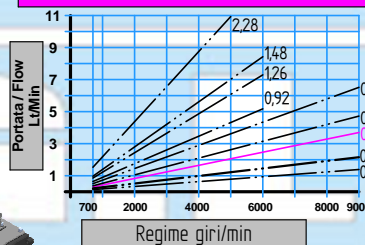
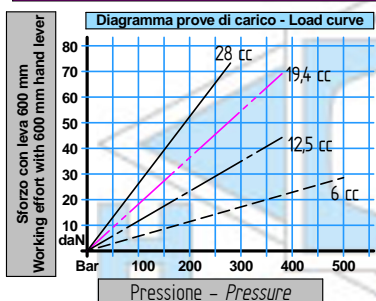
Clockwise rotation
Rotazione oraria



A	3/8 gas
F	10 Lt

Pompa a mano - Hand pump

Pompa ad ingranaggi - Gear pump



Type	Cilindrata Flow (cc)	Pressione massima Max pressure (bar)	rpm min.	rpm max.
017	0,16	260	700	9000
025	0,24	260	700	9000
045	0,45	280	700	9000
057	0,56	280	700	9000
076	0,75	280	700	9000
098	0,92	280	700	6000
127	1,26	280	700	6000
152	1,48	280	700	6000
230	2,28	210	700	5000

Codice di ordinazione - Ordering code

ZES	Option 1	017	SE	Option 2	06
		025			12
		045			25
		057			45
		076			
		098			
		127			
		152			
		230			

Option 1 cc Gear pump	
017	0,16 cc
025	0,24 cc
045	0,45 cc - Standard Version
057	0,56 cc
076	0,75 cc
098	0,92 cc
127	1,26 cc
152	1,48 cc
230	2,28 cc

Option 2 cc Hand pump	
06	6 cc
12	12,5 cc
25	19,5 cc - Standard Version
45	28 cc

Cilindrata Flow (cc)	Pressione massima Max pressure (bar)
6	400
12,5	320
19,4	300
28	250

Taratura valvola di massima pressione Relief valve setting min - max (bar)
30 - 400 / 220
Comunque non oltre la pressione massima della pompa a mano e/o del sistema pompante. However not over the pump's max pressure (hand pump and/or mechanic pump)

Dati tecnici indicativi e non impegnativi.
G.L. HYDRAULIC S.R.L. si riserva di apportare modifiche in qualsiasi momento e senza preavviso.
Technical data not binding. Modifications reserved without prior notice.

G.L. HYDRAULIC S.R.L.

Via F. Lamborghini, 36 - 40019 Sant' Agata Bolognese (BO) Italy

Tel. +39 (0)51 6828230 Fax +39(0)51 9599081 http://www.glyhydraulic.it - E-mail: staff@glyhydraulic.it

Cap. Soc. : € 31.200,00 i.v. - R.E.A. : B0399971 - C.F. e P.I. : IT01808760357