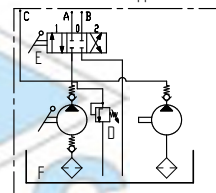


## Sistema pompante a "sforzo zero" "Zero effort system"

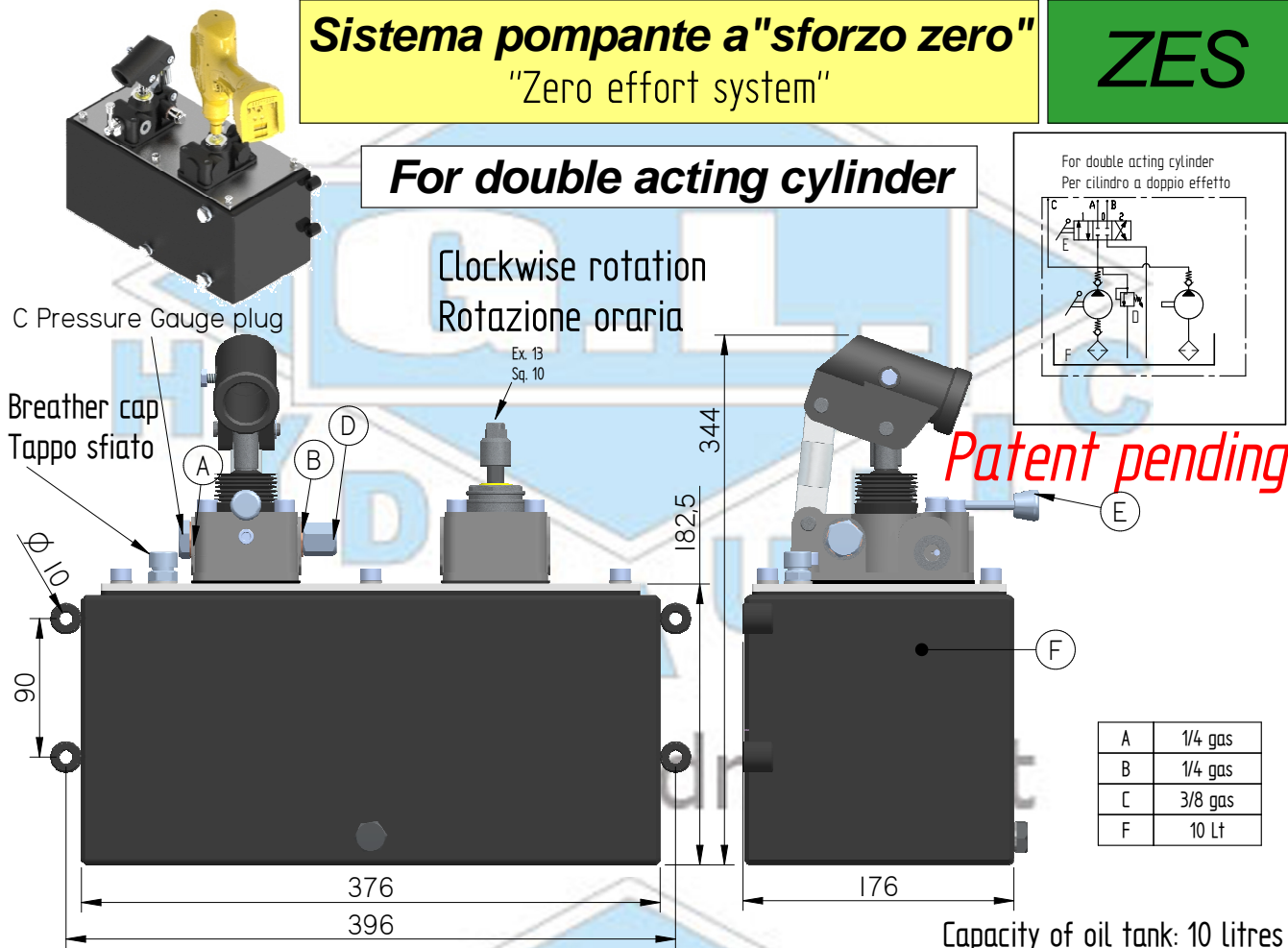
# ZES

### For double acting cylinder

For double acting cylinder  
Per cilindro a doppio effetto



Clockwise rotation  
Rotazione oraria

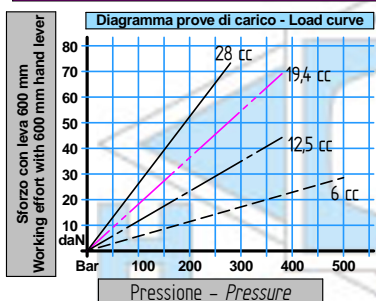


*Patent pending*

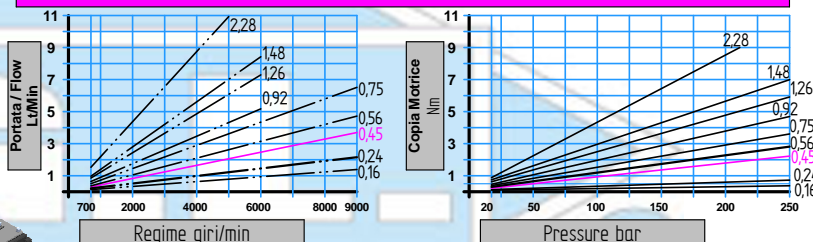
A	1/4 gas
B	1/4 gas
C	3/8 gas
F	10 Lt

Capacity of oil tank: 10 litres

### Pompa a mano - Hand pump



### Pompa ad ingranaggi - Gear pump



Type	Cilindrata Flow (cc)	Pressione massima Max pressure (bar)	rpm min.	rpm max.
017	0,16	260	700	9000
025	0,24	260	700	9000
045	0,45	280	700	9000
057	0,56	280	700	9000
076	0,75	280	700	9000
098	0,92	280	700	6000
127	1,26	280	700	6000
152	1,48	280	700	6000
230	2,28	210	700	5000

### Codice di ordinazione - Ordering code

ZES	Option 1	017	DE	Option 2	06
		025			12
		045			25
		057			45
		076			
		098			
		127			
		152			
230					

Option 1 cc Gear pump	
017	0,16 cc
025	0,24 cc
045	0,45 cc - Standard Version
057	0,56 cc
076	0,75 cc
098	0,92 cc
127	1,26 cc
152	1,48 cc
230	2,28 cc

Option 2 cc Hand pump	
06	6 cc
12	12,5 cc
25	19,5 cc - Standard Version
45	28 cc

Cilindrata Flow (cc)	Pressione massima Max pressure (bar)
6	400
12,5	320
19,4	300
28	250

Taratura valvola di massima pressione  
Relief valve setting min - max (bar)  
30 - 400 / 220

Comunque non oltre la pressione massima della pompa a mano e/o del sistema pompante.  
However not over the pump's max pressure (hand pump and/or mechanic pump)

Dati tecnici indicativi e non impegnativi.  
G.L. HYDRAULIC S.R.L. si riserva di apportare modifiche in qualsiasi momento e senza preavviso.  
Technical data not binding. Modifications reserved without prior notice.

G.L. HYDRAULIC S.R.L.

Via F. Lamborghini, 36 - 40019 Sant' Agata Bolognese (BO) Italy

Tel. +39 (0)51 6828230 Fax +39(0)51 9599081 http://www.glyhydraulic.it - E-mail: staff@glyhydraulic.it

Cap. Soc. : € 31.200,00 i.v. - R.E.A. : B0399971 - C.F. e P.I. : IT01808760357