

HYDRAULIC MOTORS

WHITE DRIVE MOTORS

PRODUCT	PAGE
WHITES WM SERIES HYDRAULIC MOTOR	207
WHITES WP SERIES HYDRAULIC MOTOR	209
WHITES WR SERIES HYDRAULIC MOTOR	210
WHITES DT SERIES HYDRAULIC MOTOR	211
WHITES RE SERIES HYDRAULIC MOTOR	211
WHITES WS SERIES HYDRAULIC MOTOR	211



QUALITY PRODUCTS



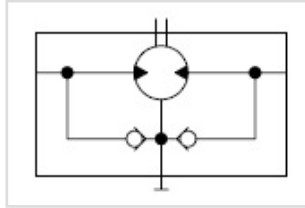
FREE ADVICE



WHITES WM SERIES HYDRAULIC MOTOR 8,4CC 16MM SHAFT G 3/8" REAR PORTS, 3 HOLE ROUND MOUNT



www.flowfitonline.com
TECH. DATA SHEET
WDM01



The WM product line with spool valve design is an economical motor with enhanced rotor technology. Intended of light-duty applications, the WM series offers many advantages such as compact size, high speed, medium torque and extreme low weight. The WM series motors are used primarily in the mobile, industrial and agricultural markets.

Features:

- Built-in check valves offer versatility and increased seal life.
- Bolt-on mounting flange relates to easy serviceability.
- Spool valve design gives superior performance and smooth operation over a wide speed and torque range.
- Enhanced rotor design provides smooth performance, compact volume and low weight.

Typical Applications:

Agriculture equipment, conveyors, carwashes, sweepers, food processing, grain augers, spreaders, feed rollers, augers, brush drives and more.

SPECIFICATIONS

CODE	Displacement cm ³ [in ³ /rev]	Max. Speed rpm		Max. Flow lpm [gpm]		Max. Torque Nm [lb-in]		Max. Pressure bar [psi]		
		cont.	inter.	cont.	inter.	cont.	inter.	cont.	inter.	peak
008	8.4 [0.5]	1864	2293	16 [4]	20 [5]	11 [97]	14 [124]	100 [1450]	140 [2030]	200 [2900]
012	13.1 [0.8]	1521	1871	20 [5]	25 [7]	17 [150]	22 [195]	100 [1450]	140 [2030]	200 [2900]
020	20.1 [1.2]	989	1229	20 [5]	25 [7]	26 [230]	34 [301]	100 [1450]	140 [2030]	200 [2900]
032	31.8 [1.9]	622	767	20 [5]	25 [7]	40 [354]	55 [487]	100 [1450]	140 [2030]	160 [2320]
040	40.2 [2.5]	495	620	20 [5]	25 [7]	49 [434]	64 [566]	100 [1450]	140 [2030]	160 [2320]

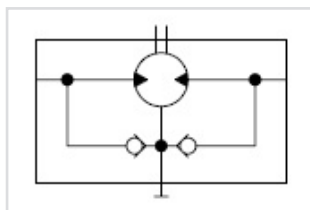
► Performance data is typical. Performance of production units varies slightly from one motor to another. Running at intermittent ratings should not exceed 10% of every minute of operation.

PRODUCT NO.	DESCRIPTION	NETT. PRICE	
		£ STERLING	€ EUROS
WM125012M BC4BAAAA	Whites WM Series hydraulic motor 13,1cc 16mm shaft G 3/8" Rear Ports,3 Hole Round Mount	£73.73	€ 99.54
WM125020M BC4BAAAA	Whites WM Series hydraulic motor 20,1cc 16mm shaft G3/8" Rear Ports,3 Hole Round Mount	£75.14	€ 101.43
WM125032M BC4BAAAA	Whites WM Series hydraulic motor 31,8cc 16mm shaft G3/8" Rear Ports,3 Hole Round Mount	£76.53	€ 103.32
WM125040M BC4BAAAA	Whites WM Series hydraulic motor 40,2cc 16mm shaft G 3/8" Rear Ports,3 Hole Round Mount	£86.03	€ 116.15
WM125050M BC4BAAAA	Whites WM Series hydraulic motor 50,3cc 16mm shaft G 3/8" Rear Ports,3 Hole Round Mount	£102.21	€ 137.98
WM125008M BC4BAAAA	Whites WM Series hydraulic motor 8,4cc 16mm shaft G 3/8" Rear Ports,3 Hole Round Mount	£71.43	€ 96.43

WHITES WM SERIES HYDRAULIC MOTOR 8,4CC 16MM SHAFT G 3/8" SIDE PORTS, 3 HOLE ROUND MOUNT



www.flowfitonline.com
TECH. DATA SHEET
WDM01



The WM product line with spool valve design is an economical motor with enhanced rotor technology. Intended for light-duty applications, the WM series offers many advantages such as compact size, high speed, medium torque and extreme low weight. The WM series motors are used primarily in the mobile, industrial and agricultural markets.

Features:

- Built-in check valves offer versatility and increased seal life.
- Bolt-on mounting flange relates to easy serviceability.
- Spool valve design gives superior performance and smooth operation over a wide speed and torque range.
- Enhanced rotor design provides smooth performance, compact volume and low weight.

Typical Applications:

Agriculture equipment, conveyors, carwashes, sweepers, food processing, grain augers, spreaders, feed rollers, augers, brush drives and more.

SPECIFICATIONS

CODE	Displacement cm ³ [in ³ /rev]	Max. Speed rpm		Max. Flow lpm [gpm]		Max. Torque Nm [lb-in]		Max. Pressure bar [psi]		
		cont.	inter.	cont.	inter.	cont.	inter.	cont.	inter.	peak
008	8.4 [0.5]	1864	2293	16 [4]	20 [5]	11 [97]	14 [124]	100 [1450]	140 [2030]	200 [2900]
012	13.1 [0.8]	1521	1871	20 [5]	25 [7]	17 [150]	22 [195]	100 [1450]	140 [2030]	200 [2900]
020	20.1 [1.2]	989	1229	20 [5]	25 [7]	26 [230]	34 [301]	100 [1450]	140 [2030]	200 [2900]
032	31.8 [1.9]	622	767	20 [5]	25 [7]	40 [354]	55 [487]	100 [1450]	140 [2030]	160 [2320]
040	40.2 [2.5]	495	620	20 [5]	25 [7]	49 [434]	64 [566]	100 [1450]	140 [2030]	160 [2320]

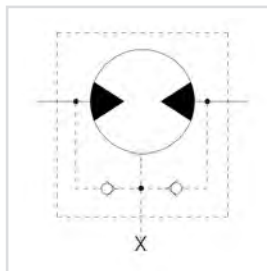
► Performance data is typical. Performance of production units varies slightly from one motor to another. Running at intermittent ratings should not exceed 10% of every minute of operation.

PRODUCT NO.	DESCRIPTION	NETT. PRICE	
		£ STERLING	€ EUROS
WM125012K BC4BAAAA	Whites WM Series hydraulic motor 13,1cc 16mm shaft G 3/8" Side Ports,3 Hole Round Mount	£73.73	€ 99.54
WM125020K BC4BAAAA	Whites WM Series hydraulic motor 20,1cc 16mm shaft G 3/8" Side Ports,3 Hole Round Mount	£75.14	€ 101.43
WM125032K BC4BAAAA	Whites WM Series hydraulic motor 31,8cc 16mm shaft G 3/8" Side Ports,3 Hole Round Mount	£76.53	€ 103.32
WM125040K BC4BAAAA	Whites WM Series hydraulic motor 40,2cc 16mm shaft G 3/8" Side Ports,3 Hole Round Mount	£86.03	€ 116.15
WM125050K BC4BAAAA	Whites WM Series hydraulic motor 50,3cc 16mm shaft G 3/8" Side Ports,3 Hole Round Mount	£102.21	€ 137.98
WM125008K BC4BAAAA	Whites WM Series hydraulic motor 8,4cc 16mm shaft G 3/8" Side Ports,3 Hole Round Mount	£71.43	€ 96.43

WHITES WP SERIES HYDRAULIC MOTOR 25CC 25MM SHAFT 2-HOLE SAE A MOUNT C/W 1/2" OFFSET MANIFOLD PORTS



www.flowfitonline.com
TECH. DATA SHEET
WDM02



The WP motor series is an economical alternative to more complex geroler designs that still provides high efficiency across a wide performance range. These motors are intended for light-duty applications requiring high torque in a compact package and are suitable for industrial and mobile applications including car wash brushes, food processing equipment, conveyors, machine tools, agricultural equipment, sweepers, skid steer attachments and more

Features:

- Built-in check valves offer versatility and increased seal life.
- A variety of mounts and shafts provide flexibility in application design
- Spool valve design gives superior performance and smooth operation over a wide speed and torque range.
- Standard high pressure shaft seals offer superior seal life and performance

Typical Applications:

Agriculture equipment, conveyors, carwashes, sweepers, food processing, grain augers, spreaders, feed rollers, augers, brush drives and more.

SPECIFICATIONS

CODE	Displacement cm ³ [in ³ /rev]	Max. Speed rpm		Max. Flow lpm [gpm]		Max. Torque Nm [lb-in]		Max. Pressure bar [psi]		
		cont.	inter.	cont.	inter.	cont.	inter.	cont.	inter.	peak
025	25 [1.5]	1570	1687	40 [11]	45 [12]	35 [310]	48 [425]	100 [1450]	140 [2030]	225 [3260]
032	32 [2.0]	1550	1674	50 [13]	55 [15]	45 [398]	57 [504]	100 [1450]	140 [2030]	225 [3260]
040	40 [2.5]	1471	1670	60 [16]	70 [19]	65 [575]	74 [655]	100 [1450]	140 [2030]	225 [3260]
050	50 [3.0]	1208	1500	60 [16]	75 [20]	91 [805]	108 [956]	140 [2030]	175 [2540]	240 [3480]
060	59 [3.6]	1185	1271	60 [16]	75 [20]	125 [1106]	136 [1204]	160 [2320]	175 [2540]	240 [3480]
080	78 [4.8]	896	960	60 [16]	75 [20]	164 [1451]	183 [1620]	160 [2320]	175 [2540]	240 [3480]
100	96 [5.9]	728	780	60 [16]	75 [20]	195 [1726]	213 [1885]	160 [2320]	175 [2540]	240 [3480]
125	125 [7.6]	559	599	60 [16]	75 [20]	258 [2285]	278 [2460]	160 [2320]	175 [2540]	240 [3480]
160	154 [9.4]	452	483	60 [16]	75 [20]	321 [2840]	362 [3205]	160 [2320]	175 [2540]	240 [3480]
200	190 [11.6]	367	385	60 [16]	75 [20]	380 [3365]	420 [3720]	150 [2180]	175 [2540]	240 [3480]
250	240 [14.6]	291	312	60 [16]	75 [20]	445 [3940]	557 [4930]	140 [2030]	175 [2540]	240 [3480]
315	303 [18.5]	228	245	60 [16]	75 [20]	460 [4071]	602 [5330]	120 [1740]	160 [2320]	200 [2900]
400	388 [23.7]	155	189	60 [16]	75 [20]	488 [4320]	625 [5532]	95 [1380]	125 [1810]	180 [2610]

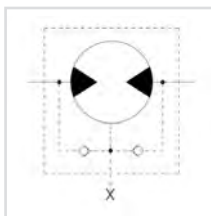
► Performance data is typical. Performance of production units varies slightly from one motor to another. Running at intermittent ratings should not exceed 10% of every minute of operation.

PRODUCT NO.	DESCRIPTION	NETT. PRICE	
		£ STERLING	€ EUROS
WP155250A6312BAAAA	Whites WP Series hydraulic motor 240cc 25mm shaft 2-hole SAE A mount c/w 1/2" offset manifold ports	£112.51	€ 151.89
WP155125A6312BAAAA	Whites WP Series hydraulic motor 125cc 25mm shaft 2-hole SAE A mount c/w 1/2" offset manifold ports	£105.90	€ 142.97
WP155160A6312BAAAA	Whites WP Series hydraulic motor 154cc 25mm shaft 2-hole SAE A mount c/w 1/2" offset manifold ports	£107.04	€ 144.50
WP155200A6312BAAAA	Whites WP Series hydraulic motor 190cc 25mm shaft 2-hole SAE A mount c/w 1/2" offset manifold ports	£110.20	€ 148.77
WP155025A6312BAAAA	Whites WP Series hydraulic motor 25cc 25mm shaft 2-hole SAE A mount c/w 1/2" offset manifold ports	£97.61	€ 131.78
WP155315A6312BAAAA	Whites WP Series hydraulic motor 303cc 25mm shaft 2-hole SAE A mount c/w 1/2" offset manifold ports	£119.79	€ 161.72
WP155032A6312BAAAA	Whites WP Series hydraulic motor 32cc 25mm shaft 2-hole SAE A mount c/w 1/2" offset manifold ports	£99.57	€ 134.42
WP155400A6312BAAAA	Whites WP Series hydraulic motor 388cc 25mm shaft 2-hole SAE A mount c/w 1/2" offset manifold ports	£129.39	€ 174.68
WP155040A6312BAAAA	Whites WP Series hydraulic motor 40cc 25mm shaft 2-hole SAE A mount c/w 1/2" offset manifold ports	£101.33	€ 136.78
WP155045A6312BAAAA	Whites WP Series hydraulic motor 50cc 25mm shaft 2-hole SAE A mount c/w 1/2" offset manifold ports	£102.92	€ 138.94
WP155060A6312BAAAA	Whites WP Series hydraulic motor 59cc 25mm shaft 2-hole SAE A mount c/w 1/2" offset manifold ports	£103.40	€ 139.59
WP155080A6312BAAAA	Whites WP Series hydraulic motor 78cc 25mm shaft 2-hole SAE A mount c/w 1/2" offset manifold ports	£104.25	€ 140.73
WP155100A6312BAAAA	Whites WP Series hydraulic motor 96cc 25mm shaft 2-hole SAE A mount c/w 1/2" offset manifold ports	£104.91	€ 141.62

WHITES WR SERIES HYDRAULIC MOTOR 40CC 25MM SHAFT 2-HOLE SAE A MOUNT C/W 1/2" OFFSET MANIFOLD PORTS



www.flowfitonline.com
TECH. DATA SHEET
WDM03



The WR motor series incorporates the latest advances for smooth performance, efficiency and durability. It features an optimized Roller Stator® geometry with seven precision rollers to eliminate sliding friction and provide rolling contact between the rotor and stator. This increases motor efficiency. A three-zone spool valve, integral check valves and a provision for a case drain reduce pressure on internal seals to improve product life. A wide variety of mounting, shaft, motor displacement and porting options are available to meet all application needs.

Features:

- A variety of mounts and shafts provides flexibility in application.
- A high pressure shaft seal offers superior seal life and performance
- The spool valve design gives superior performance and smooth operation over a wide speed and torque range.
- Built-in check valves (not shown) in the housing offer versatility and increased seal life.
- Optimized Roller Stator® geometry provides a smooth running high efficient product.

Typical Applications:

Conveyors, car washes, positioners, light-duty wheel drives, sweepers, food processing, grain augers, spreaders, feed rollers, screw drives, brush drives and more.

SPECIFICATIONS

CODE	Displacement cm ³ [in ³ /rev]	Max. Speed rpm		Max. Flow lpm [gpm]		Max. Torque Nm [lb-in]		Max. Pressure bar [psi]		
		cont.	inter.	cont.	inter.	cont.	inter.	cont.	inter.	peak
040	40 [2.5]	1116	1515	45 [12]	61 [16]	93 [823]	123 [1088]	155 [2250]	207 [3000]	224 [3250]
050	50 [3.1]	1058	1220	53 [14]	61 [16]	111 [982]	149 [1319]	155 [2250]	207 [3000]	224 [3250]
060	59 [3.6]	890	1142	53 [14]	68 [18]	138 [1221]	172 [1522]	155 [2250]	207 [3000]	224 [3250]
070	71 [4.3]	865	1078	61 [16]	76 [20]	176 [1558]	207 [1832]	172 [2500]	207 [3000]	241 [3500]
080	79 [4.9]	759	957	61 [16]	76 [20]	202 [1788]	243 [2150]	172 [2500]	207 [3000]	241 [3500]
090	88 [5.4]	691	864	61 [16]	76 [20]	222 [1965]	263 [2327]	172 [2500]	207 [3000]	241 [3500]
100	100 [6.1]	610	760	61 [16]	76 [20]	246 [2177]	289 [2558]	172 [2500]	207 [3000]	241 [3500]
115	113 [6.9]	539	672	61 [16]	76 [20]	284 [2513]	327 [2894]	172 [2500]	207 [3000]	241 [3500]
130	129 [7.9]	472	588	61 [16]	76 [20]	316 [2797]	375 [3319]	172 [2500]	207 [3000]	241 [3500]
160	160 [9.8]	379	469	61 [16]	76 [20]	400 [3540]	454 [4018]	172 [2500]	207 [3000]	241 [3500]
200	198 [12.1]	308	384	61 [16]	76 [20]	462 [4088]	544 [4814]	172 [2500]	207 [3000]	241 [3500]
240	236 [14.4]	249	315	61 [16]	76 [20]	548 [4850]	642 [5682]	172 [2500]	207 [3000]	224 [3250]
250	250 [15.3]	250	300	61 [16]	76 [20]	561 [4965]	624 [5522]	172 [2500]	207 [3000]	224 [3250]
290	291 [17.8]	210	256	61 [16]	76 [20]	526 [4655]	664 [5876]	138 [2000]	190 [2750]	207 [3000]
320	322 [19.6]	188	235	61 [16]	76 [20]	518 [4584]	690 [6106]	121 [1750]	172 [2500]	190 [2750]
400	400 [24.4]	152	190	61 [16]	76 [20]	551 [4873]	698 [6177]	104 [1500]	138 [2000]	155 [2250]

▶ Performance data is typical. Performance of production units varies slightly from one motor to another. Running at intermittent ratings should not exceed 10% of every minute of operation.

PRODUCT NO.	DESCRIPTION	NETT. PRICE	
		£ STERLING	€ EUROS
WR255100A6312BAAAA	Whites WR Series hydraulic motor 100cc 25mm shaft 2-hole SAE A Mount c/w 1/2" offset manifold ports	£122.95	€ 165.99
WR255115A6312BAAAA	Whites WR Series hydraulic motor 113cc 25mm shaft 2-hole SAE A Mount c/w 1/2" offset manifold ports	£122.95	€ 165.99
WR255130A6312BAAAA	Whites WR Series hydraulic motor 129cc 25mm shaft 2-hole SAE A Mount c/w 1/2" offset manifold ports	£125.25	€ 169.08
WR255160A6312BAAAA	Whites WR Series hydraulic motor 160cc 25mm shaft 2-hole SAE A Mount c/w 1/2" offset manifold ports	£127.55	€ 172.20
WR255200A6312BAAAA	Whites WR Series hydraulic motor 198cc 25mm shaft 2-hole SAE A Mount c/w 1/2" offset manifold ports	£133.30	€ 179.96
WR255240A6312BAAAA	Whites WR Series hydraulic motor 236cc 25mm shaft 2-hole SAE A Mount c/w 1/2" offset manifold ports	£139.06	€ 187.74
WR255250A6312BAAAA	Whites WR Series hydraulic motor 250cc 25mm shaft 2-hole SAE A Mount c/w 1/2" offset manifold ports	£139.06	€ 187.74
WR255290A6312BAAAA	Whites WR Series hydraulic motor 291cc 25mm shaft 2-hole SAE A Mount c/w 1/2" offset manifold ports	£145.17	€ 195.99
WR255320A6312BAAAA	Whites WR Series hydraulic motor 322cc 25mm shaft 2-hole SAE A Mount c/w 1/2" offset manifold ports	£151.29	€ 204.24
WR255400A6312BAAAA	Whites WR Series hydraulic motor 400cc 25mm shaft 2-hole SAE A Mount c/w 1/2" offset manifold ports	£160.96	€ 217.30
WR255040A6312BAAAA	Whites WR Series hydraulic motor 40cc 25mm shaft 2-hole SAE A Mount c/w 1/2" offset manifold ports	£121.21	€ 163.64
WR255050A6312BAAAA	Whites WR Series hydraulic motor 50cc 25mm shaft 2-hole SAE A Mount c/w 1/2" offset manifold ports	£121.79	€ 164.42
WR255060A6312BAAAA	Whites WR Series hydraulic motor 59cc 25mm shaft 2-hole SAE A Mount c/w 1/2" offset manifold ports	£121.79	€ 164.42
WR255070A6312BAAAA	Whites WR Series hydraulic motor 71cc 25mm shaft 2-hole SAE A Mount c/w 1/2" offset manifold ports	£121.79	€ 164.42
WR255080A6312BAAAA	Whites WR Series hydraulic motor 79cc 25mm shaft 2-hole SAE A Mount c/w 1/2" offset manifold ports	£122.95	€ 165.99
WR255090A6312BAAAA	Whites WR Series hydraulic motor 88cc 25mm shaft 2-hole SAE A Mount c/w 1/2" offset manifold ports	£122.95	€ 165.99

WHITES DT SERIES HYDRAULIC MOTOR



The most amazing aspect of the DT Series motor is its huge torque potential from its relatively small size. The DT Series motor is capable of producing output torque comparable to competitive designs, but from a package that is both shorter and lighter. The savings in space and weight in no way compromises durability, as the motor uses massive shafts, bearings and drive links to transmit the torque produced by this powerful package. The use of a case drain allows reduced pressure on the shaft seal while maintaining drive-line lubrication for maximum motor life. Standard mounting and shaft options offer interchange ability with competitive designs. An internal drain option is also available.

Features / Benefits

- Heavy-Duty Roller Bearing supports high side loads and received forced lubrication for cooling and increased life.
- Compact Housing contributes to high power-to-weight ratio of motor and offers front and rear mounting flanges.
- Heavy-Duty Drive Link received forced lubrication for long life and is capable of extreme duty cycles.
- Roller Stator Motor available in displacements up to 2093cm³ for high torque output.
- Three-Zone Orbiting Valve precisely meters oil to produce exceptional volumetric efficiencies

Typical Applications

Heavy-Duty wheel drives, augers, mixers., pumping units, conveyors, boring machines, rotators, mining equipment, forestry equipment and more and more.

WHITES RE SERIES HYDRAULIC MOTOR



RE Series motors offer the perfect compromise between price and performance by producing work horse power at a reasonable cost. Although these motors perform well in a wide range of applications, they are especially suited for low flow, high pressure applications. During startup pressure causes the balance plate to flex toward the rotor, vastly improving volumetric efficiency. As the motor reaches operating pressure, the balance plate relaxes, allowing the rotor to turn freely which translates into higher mechanical efficiencies. Transmitting this power to the output shaft is the most durable drive link in its class. Four bearing options, combined with standard mounting flanges and output shafts, allow the motor to be configured to suit nearly any application.

Features / Benefits

- High pressure shaft seal offers superior seal life and performance and eliminates need for case drain.
- Three bearing options allow load carrying capability of motor to be matched to application
- Heavy-duty drive link is the most durable in its class and received full flow lubrication to provide long life.
- Value-in-rotor design provides cost effective, efficient distribution of oil and reduces overall motor length.
- Pressure-compensated balance plate improves volumetric efficiency at low flow and high pressure.

Typical applications

Medium-duty wheel drives, augers, mixers, win drives, swing drives, grapple heads, feed rollers, broom drives and more.

WHITES WS SERIES HYDRAULIC MOTOR



The WS targets agricultural equipment, skid steer attachments, and other applications that require greater torque under demanding conditions. A distinguishing feature of the WS in relation to competitive products is its heavy duty drive link with a larger pitch diameter. This enables the WS to better withstand pressure and torque spikes and it reflected in its intermitted and peak performance ratings. Additional product features include a three zone commutator valve, heavy-duty tapered roller bearings, and case drain with integral internal drain. The WS offers numerous housing, displacement and shaft options to meet most common SAE and European requirements.

Features / Benefits

- Nine shaft and seven mounting options to meet the most common SAE and European requirements
- Heavy-duty tapered roller bearings for extra side load capacity
- Heavy-duty drive link with larger pitch diameter than competitors for greater resistance to pressure and torque spikes
- Three zone commutator valve for high flow capacity
- Standard case drain with integral internal drain for extended shaft seal

Typical Applications

Medium-duty wheel drives, sweepers, grain augers, spreaders, feed rollers, brush drives, mowers, harvesting equipment gear box mounts and more.