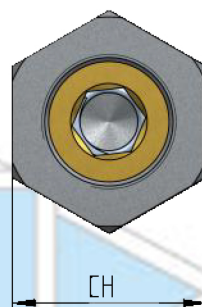
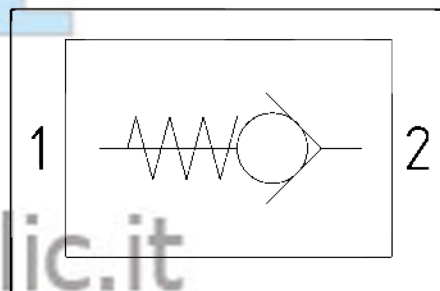
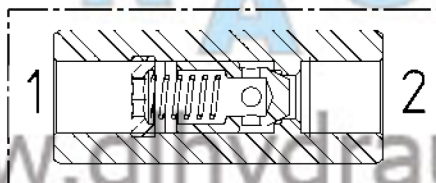
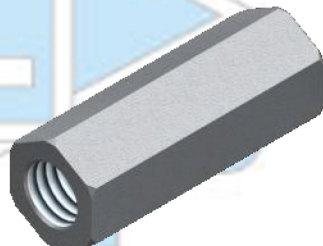


Valvola unidirezionale
-
Check valve

AISI316

VU

Descrizione Description	VU -G1/4	VU -G3/8	VU -G1/2	VU -G3/4	VU -G1"
Pressione massima - Max pressure Bar	350	350	320	300	300
Portata - Flow Lt/min	15	30	50	90	150
Peso - Weight Kg	0,10	0,18	0,31	0,45	0,70
1 - 2	1/4 GAS	3/8 GAS	1/2 GAS	3/4 GAS	1" GAS
L	55	65	75	86,5	105
CH	19	24	27	35	41
Materiale corpo - Body material	Stainless steel AISI316				

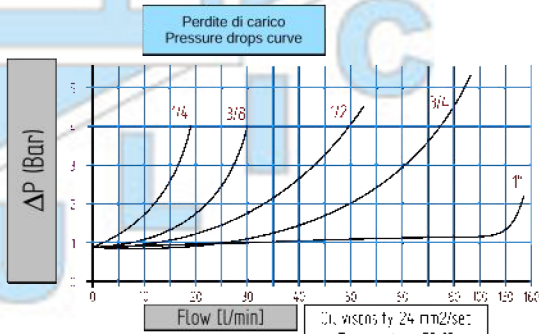


Codice di ordinazione
Ordering code

VU-	Option 1 G1/4	Option 2 X	-AISI316
	G3/8		
	G1/2		
	G3/4		
	G1"		

Nel caso non si indicasse l'Opzione2, sarà fornita in configurazione standard.
If Option2 is not indicated, standard configuration will be considered.

Option 1	Option 2	* = standard
Thread A1 - A2	X (*)	Pressione di apertura Cracking pressure 1 Bar
G1/4 Filetto 1/4 Gas - Thread 1/4 Gas	Y	Pressione di apertura Cracking pressure 3 Bar
G3/8 Filetto 3/8 Gas - Thread 3/8 Gas	Z	Pressione di apertura Cracking pressure 6 Bar
G1/2 Filetto 1/2 Gas - Thread 1/2 Gas		
G3/4 Filetto 3/4 Gas - Thread 3/4 Gas		
G1 Filetto 1" Gas - Thread 1" Gas		



Dati tecnici indicativi e non impegnativi.
L'azienda si riserva di apportare modifiche in qualsiasi momento e senza preavviso.

Technical data not binding.
Modifications reserved without prior notice.