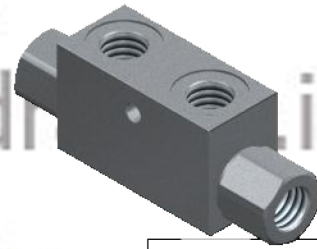
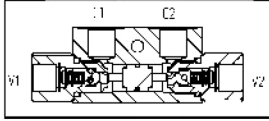
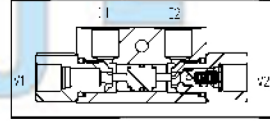
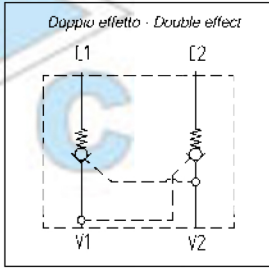
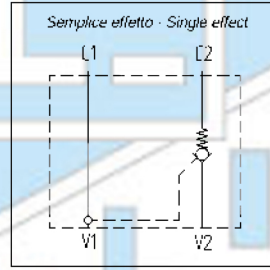


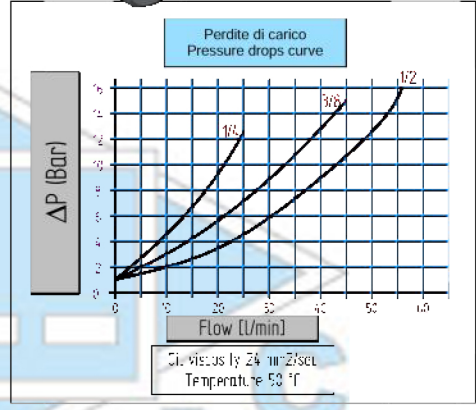
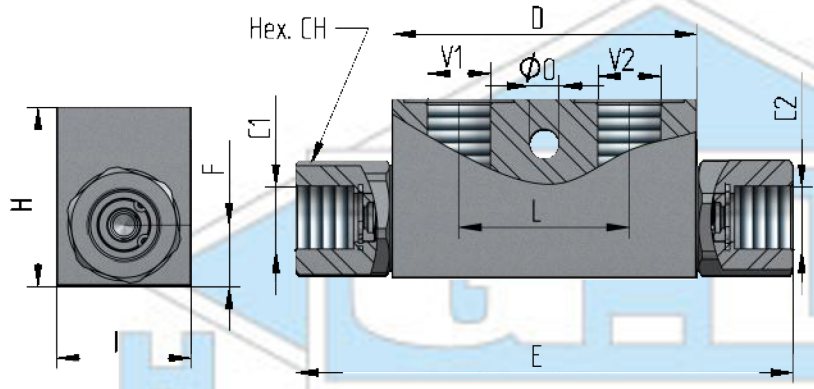
Valvola di blocco pilotata
-
Pilot operated check valve

AISI316
VBSE
VBDE

Descrizione Description	VB -G1/4	VB -G3/8	VB -G1/2	
Pressione massima - Max pressure	Bar	350	350	300
Portata - Flow	Lt/min	30	30	50
Peso - Weight	Kg	0,65	0,65	1,06
V1 - V2	1/4 GAS	3/8 GAS	1/2 GAS	
C1 - C2	1/4 GAS	3/8 GAS	1/2 GAS	
D	64	64	80	
E	107	107	158	
F	13,5	13,5	18	
H	40	40	50	
I	30	30	30	
L	36	36	40	
Hex. CH	24	24	30	
O	⌀ M8	⌀ M8	⌀ 8,5	
Rapporto pilotaggio - Pilot ratio	1:4	1:4	1:3	
Materiale corpo - Body material	STAINLESS STEEL AISI316			



Dati tecnici indicativi e non impegnativi.
L'azienda si riserva di apportare modifiche in qualsiasi momento e senza preavviso.
*Technical data not binding.
Modifications reserved without prior notice.*



**Codice di ordinazione
Ordering code**

VB Option 1
SE
DE - Option 2
G1/4
G3/8
G1/2 Option 3
M
N Option 4
X - AISI316

Nel caso non si indicasse l'Opzione3 e/o l'Opzione4, sarà fornita in configurazione standard.

If Option3 and/or Option4 are not indicated, standard configuration will be considered.

Option 1	Option 2	Option 3	Option 4
SE Valvola di blocco a singolo effetto Check valve single acting	Thread V1 - V2 G1/4 Filetto 1/4 Gas Thread 1/4 Gas	M (*) N	*= standard O-Ring su pistone pilota With seal on pilot piston
DE Valvola di blocco a doppio effetto Check valve double acting	G3/8 Filetto 3/8 Gas Thread 3/8 Gas		Senza O-Ring su pistone pilota Without seal on pilot piston
	G1/2 Filetto 1/2 Gas Thread 1/2 Gas		

Option 4	*= standard
X (*)	Pressione di apertura Cracking pressure 3 Bar