

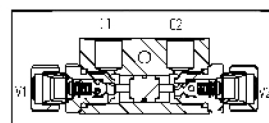
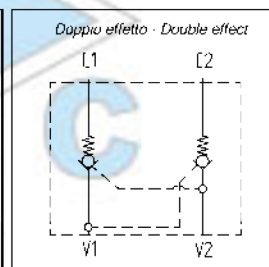
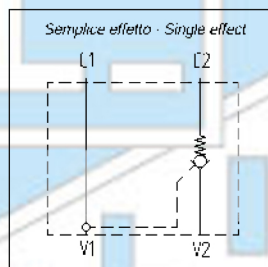


Valvola di blocco pilotata DIN2353
Pilot operated check valve DIN2353

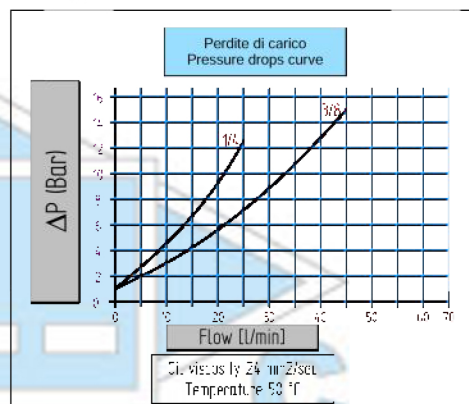
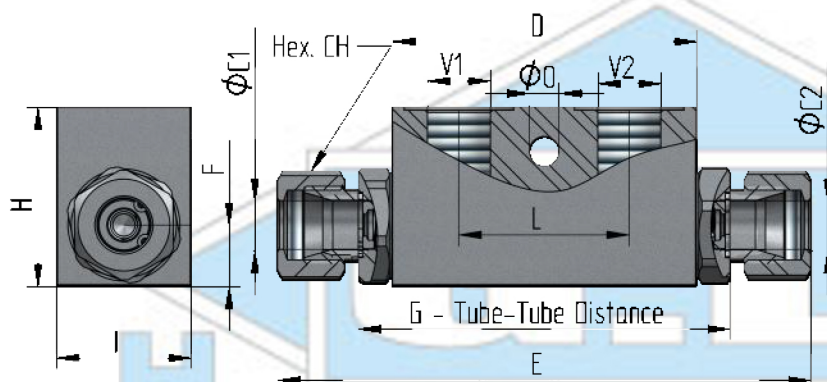
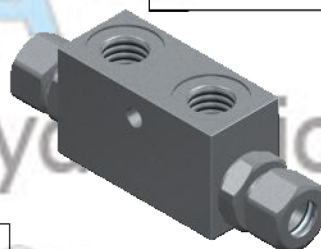
AISI316

VBSD
VBDD

Descrizione Description	VB -G1/4 -AISI316	VB -G3/8 -AISI316	
Pressione massima - Max pressure	Bar	350	350
Portata - Flow	Lt/min	30	30
Peso - Weight	Kg	0,65	0,65
V1 - V2	1/4 GAS	3/8 GAS	
C1 - C2	Ø 12	Ø 12	
D	65	65	
E	129	129	
F	13,5	13,5	
G	84	84	
H	40	40	
I	30	30	
L	36	36	
Hex. CH	22	22	
O	M 8	M 8	
Rapporto pilotaggio - Pilot ratio	1:4,6	1:4,6	
Materiale corpo - Body material	STAINLESS STEEL AISI316		



Dati tecnici indicativi e non impegnativi.
 L'azienda si riserva di apportare modifiche in qualsiasi momento e senza preavviso.
 Technical data not binding.
 Modifications reserved without prior notice.



Codice di ordinazione
Ordering code

VB

Option 1	SD	Option 2	G1/4	Option 3	M	Option 4	X	-AISI316
	DD		G3/8		N			

Nel caso non si indicasse l'Opzione3 e/o l'Opzione4, sarà fornita in configurazione standard.

If Option3 and/or Option4 are not indicated, standard configuration will be considered.

Option 1	Option 2	Option 3	Option 4
SD Valvola di blocco a singolo effetto Check valve single acting	Thread V1 - V2 G1/4 Filletto 1/4 Gas Thread 1/4 Gas G3/8 Filletto 3/8 Gas Thread 3/8 Gas	M (*) N	*= standard O-Ring su pistone pilota With seal on pilot piston Senza O-Ring su pistone pilota Without seal on pilot piston

Option 4	Option 4
X (*)	*= standard Pressione di apertura Cracking pressure 1 Bar

G.L. HYDRAULIC S.R.L.

Via F. Lamborghini, 36 - 40019 Sant' Agata Bolognese (BO) Italy

Tel. +39 (0)51 6828230 Fax +39(0)51 9599081 <http://www.glhydraulic.it> - E-mail: staff@glhydraulic.it

Cap. Soc. : € 31.200,00 i.v. - R.E.A. : B0399971 - C.F. e P.I. : IT01808760357