

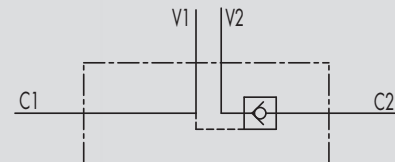
2.1 - VALVOLE DI BLOCCO PILOTATE A SEMPLICE EFFETTO A 4 VIE

TIPO/TYPE
VBPSE

2.1 - SINGLE PILOT OPERATED CHECK VALVES



SCHEMA IDRAULICO
HYDRAULIC DIAGRAM



IMPIEGO:

Valvola utilizzata per bloccare in posizione un cilindro in un solo senso, consentendo il flusso in una direzione ed impedendolo in senso contrario fino a quando non viene applicata la pressione di pilotaggio.

MATERIALI E CARATTERISTICHE:

Corpo: acciaio zincato

Componenti interni: acciaio temprato termicamente e rettificato

Guarnizioni: BUNA N standard

Tenuta: a cono guidato. Non ammette trafilamenti

MONTAGGIO:

Collegare V1 e V2 all'alimentazione, C1 al lato dell'attuatore con flusso libero e C2 al lato dell'attuatore dove si desidera la tenuta.

A RICHIESTA:

- senza guarnizione OR sul pilota
- molla 1 Bar
- molla 8 Bar

USE AND OPERATION:

These valves are used to block the cylinder in one direction. The flow is free in one direction and blocked in the reverse direction until pilot pressure is applied.

MATERIALS AND FEATURES:

Body: zinc-plated steel

Internal parts: hardened and ground steel

Seals: BUNA N standard

Poppet type: any leakage.

APPLICATIONS:

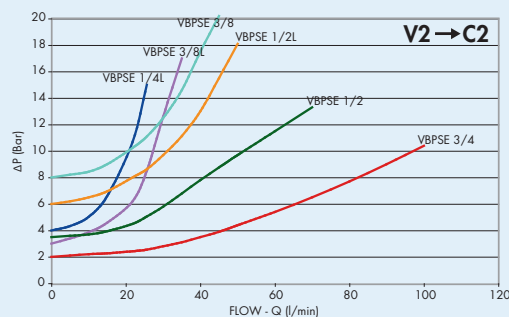
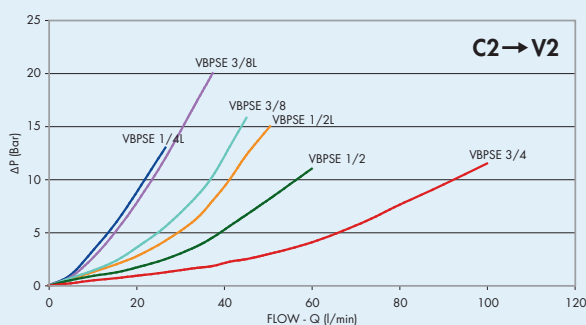
Connect V1 and V2 to the pressure flow, C1 to the free flow side of the actuator and C2 to the actuator's side you want the flow to be blocked.

ON REQUEST:

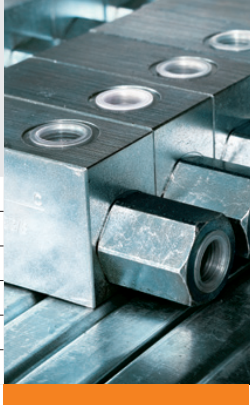
- without seal on pilot piston
- 1 Bar spring
- 8 Bar spring

PERDITE DI CARICO PRESSURE DROPS CURVE

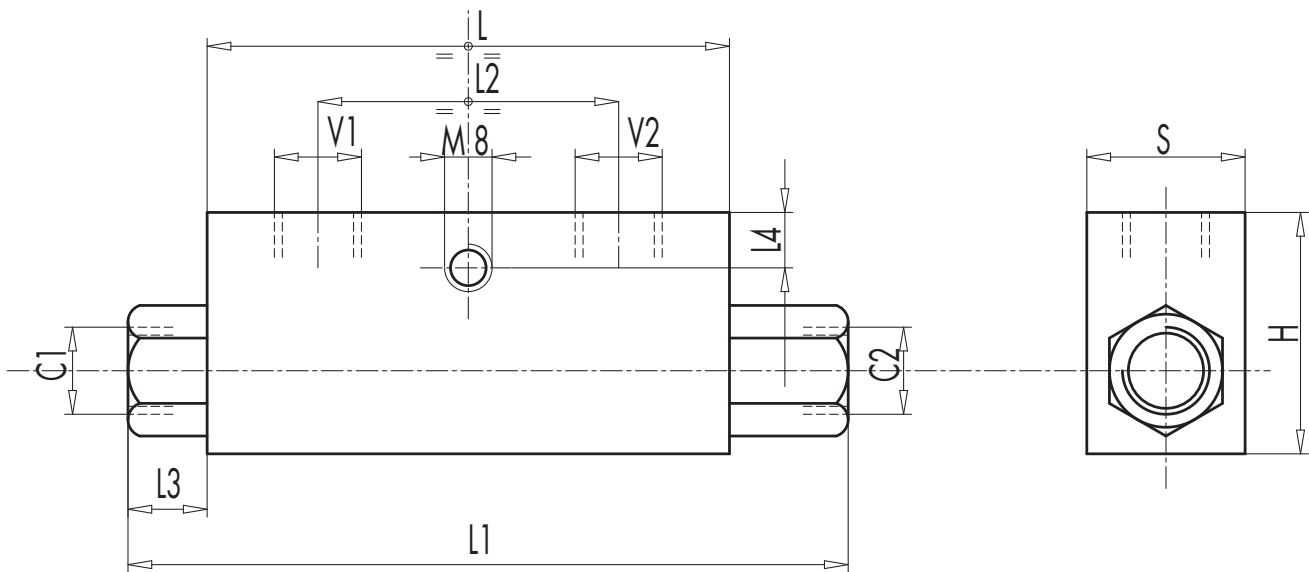
Temperatura olio: 50°C - Viscosità olio: 30 cSt
Oil temperature: 50°C - Oil viscosity: 30 cSt



CODICE CODE	SIGLA TYPE	RAPP.PILOT. PILOT RATIO	PORTATA MAX MAX FLOW Lt./min	PRESSIONE MAX MAX PRESSURE Bar	PRESSIONE APERTURA CRACKING PRESSURE Bar
V0220	VBPSE 1/4" L 4 VIE	1 : 5,5	20	350	4
V0230	VBPSE 3/8" L 4 VIE	1 : 5,5	35	350	3
V0240	VBPSE 1/2" L 4 VIE	1 : 5	50	350	6
V0250	VBPSE 3/8" 4 VIE	1 : 5	45	350	8
V0260	VBPSE 1/2" 4 VIE	1 : 4	70	350	3,5
V0245	VBPSE 3/4" 4 VIE	1 : 4	100	350	2



2



CODICE CODE	SIGLA TYPE	V1-V2 C1-C2	L	L1	L2	L3	L4	H	S	PESO WEIGHT
		GAS	mm	mm	mm	mm	mm	mm	mm	Kg
V0220	VBPSE 1/4" L 4 VIE	G 1/4"	64	106,5	36	18,5	8	40	30	0,612
V0230	VBPSE 3/8" L 4 VIE	G 3/8"	80	120	38	16	8	40	30	0,706
V0240	VBPSE 1/2" L 4 VIE	G 1/2"	90	133	45	17	8	45	35	0,994
V0250	VBPSE 3/8" 4 VIE	G 3/8"	90	148	45	25	8	45	35	1,130
V0260	VBPSE 1/2" 4 VIE	G 1/2"	80	134	40	23	18	60	35	1,214
V0245	VBPSE 3/4" 4 VIE	G 3/4"	100	182	48	36	8	60	40	1,792