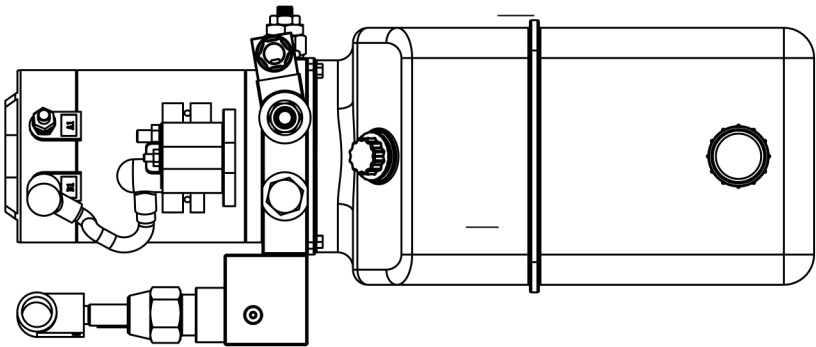
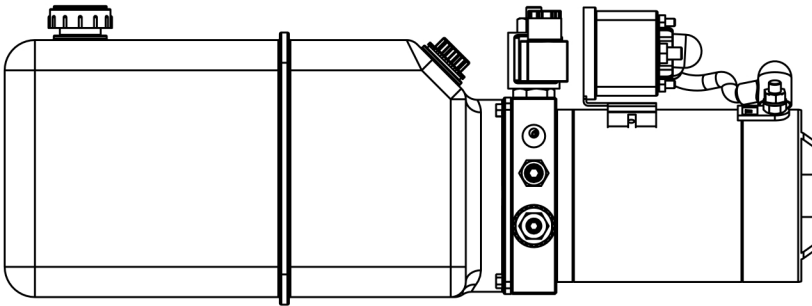
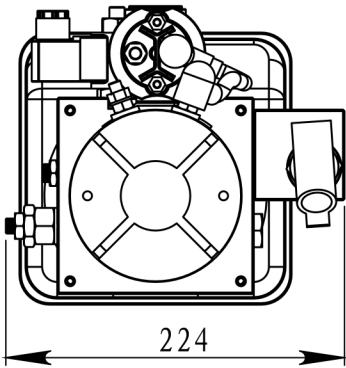
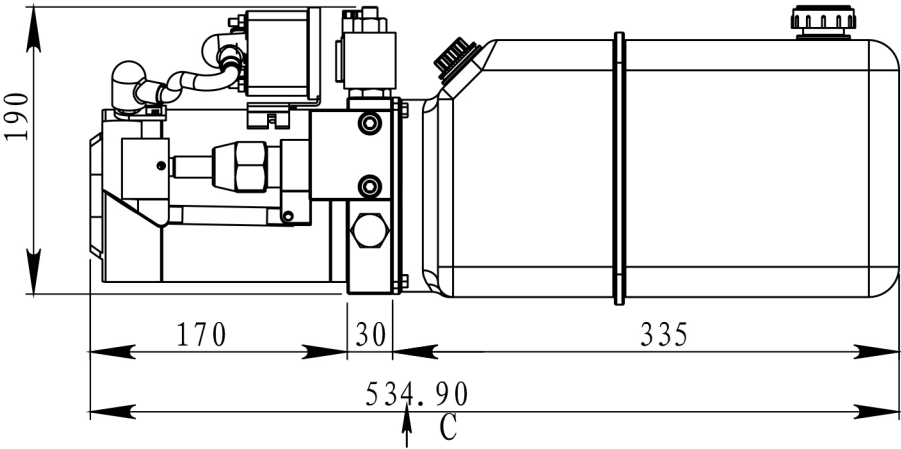


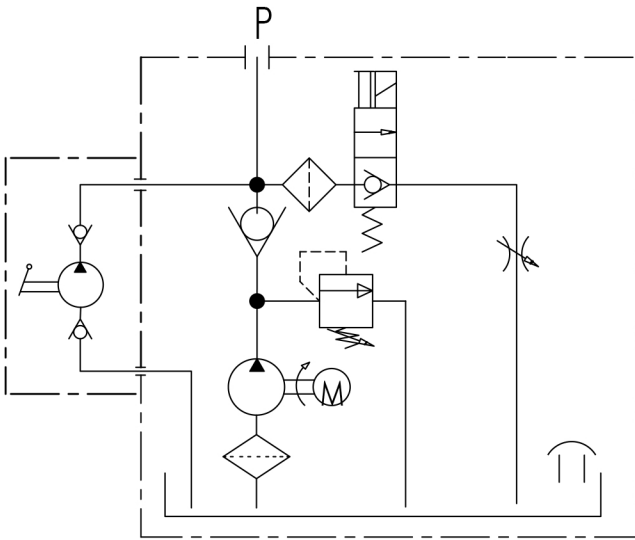
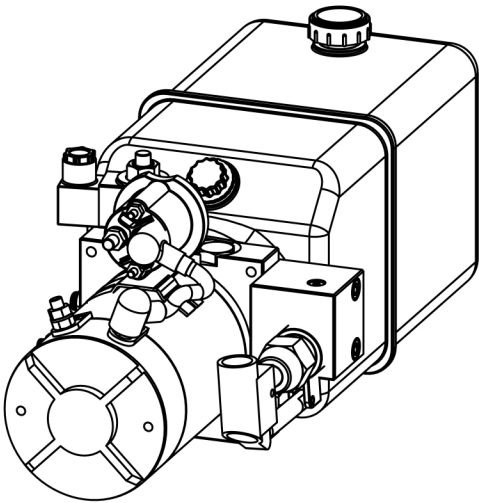
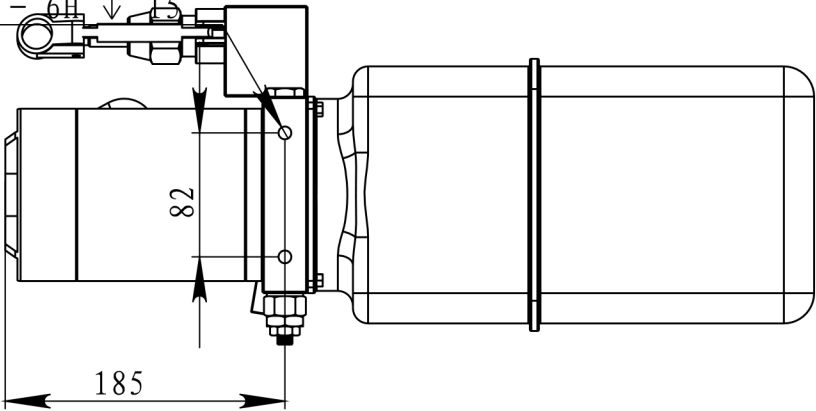
DC12V 1.6KW DC24V	DC12V DC24V	2.1cc/r	8L	18MPa		G3/8	YES	4.2 2
Motor	Valve Voltage	Oil Pump	Oil Tank	System Pressure	Setting Mode	Oil Port	Remote	Special requirements

Type TDDL-00-1009-DC1-0160-00002



C
1 : 5

2 x Ø 8.50 ▽ 17
M10 - 6H ▽ 15



mm
