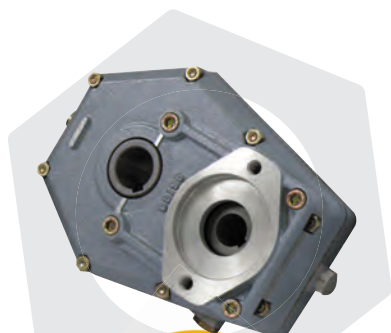


# CLUTCHES AND GEARBOXES

# SPEED REDUCTION GEARBOXES

PRODUCT	PAGE
95000 SERIES ALUMINIUM SPEED REDUCTION GEARBOXES	319
96000 SERIES ALUMINIUM SPEED REDUCTION GEARBOXES	320
97500 SERIES CAST IRON SPEED REDUCTION GEARBOXES	321



**FROM ONLY**  
**£144.31**  
+VAT



**FROM ONLY**  
**£210.62**  
+VAT



**FROM ONLY**  
**£249.63**  
+VAT



**QUALITY PRODUCTS**



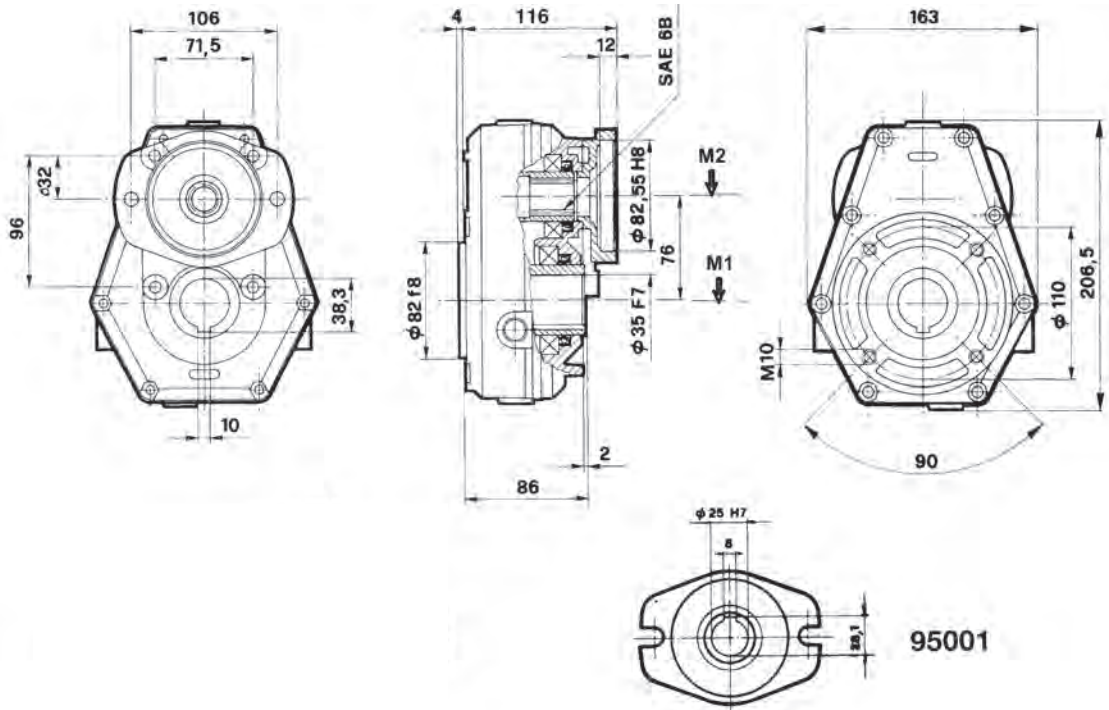
**FREE ADVICE**

**FOR SALES & ADVICE  
CALL US  
01584  
876033**

# 95000 SERIES ALUMINIUM SPEED REDUCTION GEARBOXES

www.flowfitonline.com  
TECH. DATA SHEET  
**SRG01**

**GROUP 2 • SAE 'A' • 10KW**



MAX OIL LEVEL 0.22 LITRE

M1 MAXIMUM CONTINUOUS TORQUE OF THE SPEED INCREASER (Input side daNm)	M2 MAXIMUM TORQUE OF THE SPEED INCREASER (Output side daNm)	N1 OUTPUT SPEED AFTER REDUCTION RPM	N2 INPUT SPEED BEFORE REDUCTION RPM	I RATIO OF SPEED REDUCTION ON N2 = N1	MAX TRANSMITTABLE POWER KW	WEIGHT KG
19,6	13,1	200	300	1,5	10	5
17,6	8,8	200	400	2	10	5
19,2	7,7	200	500	2,5	10	5
20,1	6,7	200	600	3	10	5
21,4	6,3	200	700	3,5	10	5
18,6	4,9	200	760	3,8	10	5

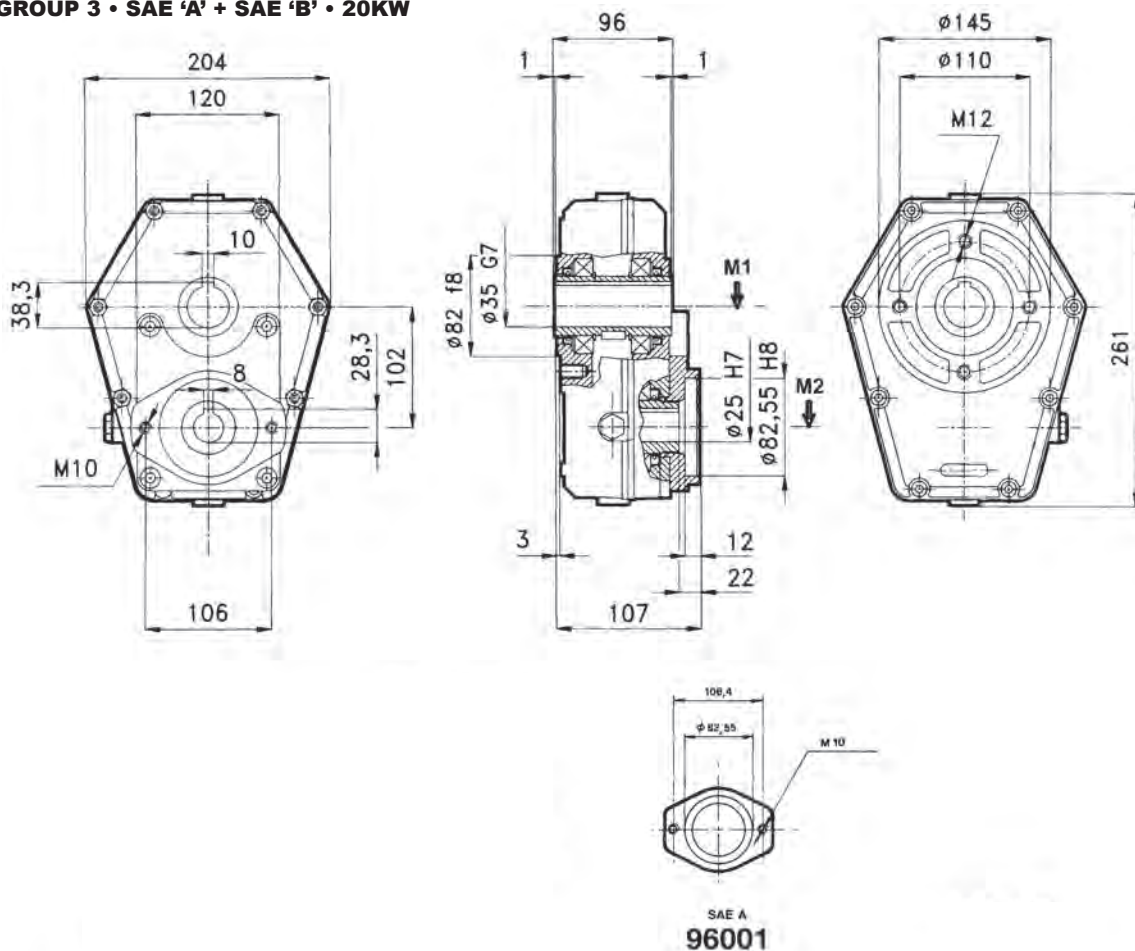
## 95001 SPEED REDUCTION GEARBOX

PART NO.	DESCRIPTION OF REDUCTION GEARBOX	NETT. PRICE	
		£ STERLING	€ EUROS
38 - 95001-1	Reduction gear gr.2 SAE A dia.25 R.1:1,5	£144.31	€ 194.82
38 - 95001-2	Reduction gear gr.2 SAE A dia.25 R.1:2	£144.31	€ 194.82
38 - 95001-2/30	Reduction gear gr.2 SAE A dia.25 R.1:2 female through-shaft	£144.31	€ 194.82
38 - 95001-3	Reduction gear gr.2 SAE A dia.25 R.1:2,5	£124.80	€ 168.49
38 - 95001-4	Reduction gear gr.2 SAE A dia.25 R.1:3	£124.80	€ 168.49
38 - 95001-4/1	Reduction gear gr.2 SAE A dia.25 R.1:3 female through-shaft	£124.80	€ 168.49
38 - 95001-5	Reduction gear gr.2 SAE A dia.25 R.1:3,5	£124.80	€ 168.49
38 - 95001-5/1	Reduction gear gr.2 SAE A dia.25 R.1:3,5 female through-shaft	£124.80	€ 168.49
38 - 95001-5/2	Reduction gear gr.2 SAE A dia.25 R.1:3,5 female through-shaft	£124.80	€ 168.49
38 - 95001-6	Reduction gear gr.2 SAE A dia.25 R.1:3,8	£124.80	€ 168.49
38 - 95001-6/3	Aluminium Speed Reduction Gearbox SAE A Ratio 1:3.8 C/W Female Through Shaft	£124.80	€ 168.49

## 96000 SERIES ALUMINIUM SPEED REDUCTION GEARBOXES

www.flowfitonline.com  
TECH. DATA SHEET  
**SRG02**

GROUP 3 • SAE 'A' + SAE 'B' • 20KW



MAX OIL LEVEL 0.35 LITRE

M1 MAXIMUM CONTINUOUS TORQUE OF THE SPEED INCREASER (Input side daNm)	M2 MAXIMUM TORQUE OF THE SPEED INCREASER (Output side daNm)	N1 OUTPUT SPEED AFTER REDUCTION RPM	N2 INPUT SPEED BEFORE REDUCTION RPM	I RATIO OF SPEED REDUCTION ON N2 = N1	MAX TRANSMITTABLE POWER KW	WEIGHT KG
48	32	200	300	1,5	20	8,5
48,5	24,2	200	400	2	20	8,5
52	20,8	200	500	2,5	20	8,5
57	19	200	600	3	20	8,5
53	15,1	200	680	3,5	20	8,5
52,5	13,8	200	760	3,8	20	8,5

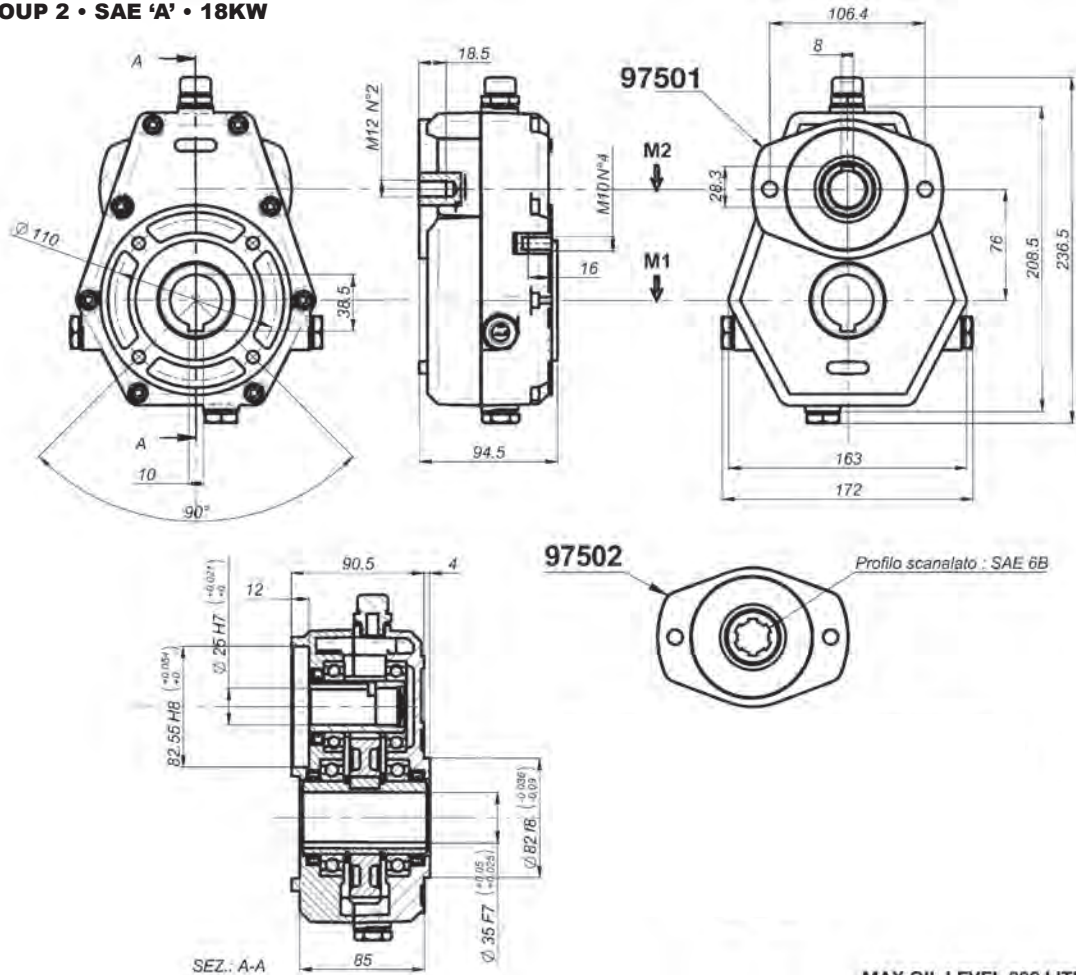
## 96001 SPEED REDUCTION GEARBOX

PART NO.	DESCRIPTION OF REDUCTION GEARBOX	NETT. PRICE	
		£ STERLING	€ EUROS
38-96071-6/3	Aluminium Speed Reduction Gearbox SAE A Ratio 1:3.8 C/W Female Through Shaft	£210.61	€ 284.32

# 97500 SERIES CAST IRON SPEED REDUCTION GEARBOXES

www.flowfitonline.com  
TECH. DATA SHEET  
**SRG03**

**GROUP 2 • SAE 'A' • 18KW**



MAX OIL LEVEL 022 LITRE

M1 MAXIMUM CONTINUOUS TORQUE OF THE SPEED INCREASER (Input side daNm)	M2 MAXIMUM TORQUE OF THE SPEED INCREASER (Output side daNm)	N1 OUTPUT SPEED AFTER REDUCTION RPM	N2 INPUT SPEED BEFORE REDUCTION RPM	I RATIO OF SPEED REDUCTION ON N2 = N1	MAX TRANSMITTABLE POWER KW	WEIGHT KG
24,7	16,5	200	300	1,5	18	10
32,4	16,2	200	400	2	18	10
38,7	15,5	200	500	2,5	18	10
24,0	8,0	200	600	3	18	10
25,5	7,5	200	680	3,5	18	10
26,6	7,0	200	760	3,8	18	10

## 97502 SPEED REDUCTION GEARBOX

PART NO.	DESCRIPTION OF REDUCTION GEARBOX	NETT. PRICE	
		£ STERLING	€ EUROS
69 - 97502-4	Cast Iron Speed Reduction SAE A - 6B Ratio 1:3 C/W Female Through Shaft	£249.62	€ 336.98
69 - 97502-6	Cast Iron Speed Reduction SAE A - 6B Ratio 1:3.8 C/W Female Through Shaft	£249.62	€ 336.98