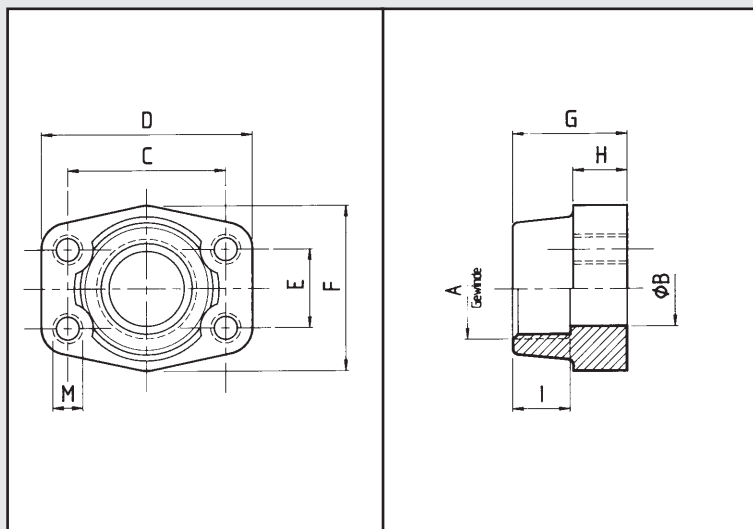


# SAE-Einschraub-Gegenflansch BSPP-Gewinde

SAE-pipe threaded flange BSPP-companion



<b>Bestellbezeichnung:</b> Ordering code:	<b>S355J2G3</b>	<b>1.4404</b>
• Flansch mit metrischen Gewinden flange with metric threads	GFS-...GM	GFX-...GM
• Flansch mit UNC-Gewinden flange with UNC threads	GFS-...GU	GFX-...GU

Material: 1. S355J2G3

2. 1.4404 rostfrei  
316L stainless

maximaler Betriebsdruck kg/cm <sup>2</sup>		S.A.E. Baugröße	Typ	Abmessungen								Gewinde		Gewicht kg.	
maximum recommended working pressure kg/cm <sup>2</sup>		nominal flange size, in	type	dimensions								thread		weight kg.	
				A	B	C	D	E	F	G	H	I	M		
													metr.	unc	
Schraube Festigkeitsklasse 8.8   10.9			<b>Standarddruckreihe Standard pressure</b>												
350	350	1/2"	GFS 080 G	G 1/2"	13	38,10	54	17,48	46	36	16	19	M 8	5/16	0,25
350	350	1/2"	GFS 080 G-038	G 3/8"	13	38,10	54	17,48	46	36	16	19	M 8	5/16	0,28
350	350	3/4"	GFS 100 G	G 3/4"	19	47,63	65	22,23	50	36	18	19	M 10	3/8	0,39
350	350	3/4"	GFS 100 G-012	G 1/2"	13	47,63	65	22,23	50	36	18	19	M 10	3/8	0,42
250	315	1"	GFS 102 G	G 1"	25	52,37	70	26,19	55	38	18	22	M 10	3/8	0,46
250	315	1"	GFS 102 G-034	G 3/4"	19	52,37	70	26,19	55	35	21	19	M 10	3/8	0,49
200	250	1 1/4"	GFS 104 G	G 1 1/4"	32	58,72	79	30,18	68	41	21	22	M 10	7/16	0,66
200	250	1 1/4"	GFS 104 G-100	G 1"	25	58,72	81	30,18	65	42	25	22	M 10	7/16	0,75
200	200	1 1/2"	GFS 106 G	G 1 1/2"	38	69,85	93	35,71	78	45	25	24	M 12	1/2	1,05
200	200	1 1/2"	GFS 106 G-114	G 1 1/4"	32	69,85	95	35,71	78	45	27	24	M 12	1/2	1,10
160	200	2"	GFS 108 G	G 2"	51	77,77	102	42,88	90	45	25	30	M 12	1/2	1,19
160	200	2"	GFS 108 G -112	G 1 1/2"	38	77,77	102	42,88	90	45	25	26	M 12	1/2	1,25
100	160	2 1/2"	GFS 110 G	G 2 1/2"	63	88,90	114	50,80	105	50	25	30	M 12	1/2	1,40
100	160	2 1/2"	GFS 110 G-200	G 2"	51	88,90	114	50,80	105	50	25	30	M 12	1/2	1,45
100	138	3"	GFS 112 G	G 3"	73	106,38	134	61,93	124	50	27	34	M 16	5/8	2,15
100	138	3"	GFS 112 G-212	G 2 1/2"	63	106,38	134	61,93	124	50	27	30	M 16	5/8	2,25
35	35	3 1/2"	GFS 114 G	G 3 1/2"	89	120,65	152	69,85	136	48	27	34	M 16	5/8	2,40
35	35	3 1/2"	GFS 114 G -300	G 3"	73	120,65	152	69,85	136	48	27	34	M 16	5/8	2,50
35	35	4"	GFS 116 G	G 4"	99	130,18	162	77,77	146	48	27	34	M 16	5/8	2,85
35	35	4"	GFS 116 G-312	G 3 1/2"	89	130,18	162	77,77	146	48	27	34	M 16	5/8	3,00
35	35	5"	GFS 118 G	G 5"	120	152,40	184	92,10	180	50	28	30	M 16	5/8	5,80
			<b>Hochdruckreihe High pressure</b>												
		1/2"	GFS 401G-012	G 1/2"	13	40,49	54	18,24	46	36	16	19	M 8	5/16	0,26
		1/2"	GFS 401G-038	G 3/8"	13	40,49	54	18,24	46	36	16	19	M 8	5/16	0,29
		3/4"	GFS 402 G	G 3/4"	19	50,80	71	23,80	55	35	21	22	M 10	3/8	0,50
		3/4"	GFS 402 G -012	G 1/2"	13	50,80	71	23,80	55	35	21	22	M 10	3/8	0,55
		1"	GFS 403 G	G 1"	25	57,16	81	27,76	65	42	25	24	M 12	7/16	0,76
		1"	GFS 403 G-034	G 3/4"	19	57,16	81	27,76	65	42	25	24	M 12	7/16	0,80
350	400	1 1/4"	GFS 404 G	G 1 1/4"	32	66,68	95	31,75	78	45	27	25	M 14	1/2	1,20
		1 1/4"	GFS 404 G-100	G 1"	25	66,68	95	31,75	78	45	27	25	M 14	1/2	1,30
		1 1/2"	GFS 405 G	G 1 1/2"	38	79,38	112	36,50	94	50	30	28	M 16	5/8	1,65
		1 1/2"	GFS 405 G-114	G 1 1/4"	32	79,38	112	36,50	94	50	30	28	M 16	5/8	1,75
		2"	GFS 406 G	G 2"	51	96,82	134	44,45	114	65	37	30	M 20	3/4	2,45
		2"	GFS 406 G -112	G 1 1/2"	38	96,82	134	44,45	114	65	37	30	M 20	3/4	2,55
		2 1/2"	GFS 407 G	G 2 1/2"	63	123,80	180	58,70	152	80	45	32	M 24	-	6,98
		3"	GFS 408 G	G 3"	73	152,40	208	71,40	178	90	55	40	M 30	-	-