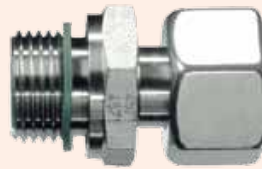
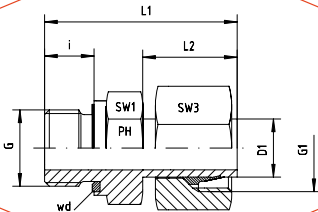


**PH**® **GERADE AUFSTECKSTUTZEN**  
STUD STANDPIPE CONNECTORS



PRODUKTE / PRODUCTS

ERLÄUTERUNG / EXPLANATION

**Vormontiert**

Einschraubgewinde: Whitworth-Rohrgewinde - Zylindrisch  
wd = Abdichtung durch Profildichtung - Viton  
Anschluss D1 ist vormontiert. Die Fertigmontage erfolgt im Stutzen mit ca. 1/2 Umdrehung der Überwurfmutter über den Punkt des deutlich fühlbaren Kraftanstieges.

**Pre-Assembled**

Thread: BSP - Parallel  
wd = Sealing by an Elastomer Profiled Ring - Viton  
Port D1 is pre-assembled. Final assembly in appropriate body with approx. 1/2 turn beyond the point of clearly perceptible resistance.

Reihe Series	Druck Pressure PN	Rohr A.D. Tube O.D. D1	Gewinde Thread G	Ca. Maße Approx. Dimensions					Bestellzeichen Order-Code Standard
				L1	L2	i	SW1	SW3	
L	315	6	G 1/8"	32,5	19,0	8	14	14	EVGE-6L-2EO
L	315	6	G 1/4"	39,5	20,5	12	19	14	EVGE-6L-4EO
L	315	8	G 1/4"	41,0	20,5	12	19	17	EVGE-8L-4EO
L	315	8	G 3/8"	42,5	20,5	12	22	17	EVGE-8L-6EO
L	315	10	G 1/4"	39,5	20,5	12	19	19	EVGE-10L-4EO
L	315	10	G 3/8"	44,0	21,0	12	22	19	EVGE-10L-6EO
L	315	10	G 1/2"	47,0	21,0	14	27	19	EVGE-10L-8EO
L	315	12	G 1/4"	42,0	21,5	12	19	22	EVGE-12L-4EO
L	315	12	G 3/8"	45,0	22,0	12	22	22	EVGE-12L-6EO
L	315	12	G 1/2"	48,5	22,5	14	27	22	EVGE-12L-8EO
L	315	15	G 3/8"	45,5	22,5	12	22	27	EVGE-15L-6EO
L	315	15	G 1/2"	46,0	23,0	14	27	27	EVGE-15L-8EO
L	315	18	G 3/8"	44,0	23,5	12	22	32	EVGE-18L-6EO
L	315	18	G 1/2"	47,0	24,0	14	27	32	EVGE-18L-8EO
L	160	18	G 3/4"	52,0	24,0	16	32	32	EVGE-18L-12EO
L	160	22	G 3/8"	46,0	24,5	12	24	36	EVGE-22L-6EO
L	160	22	G 1/2"	50,5	24,5	14	27	36	EVGE-22L-8EO
L	160	22	G 3/4"	50,5	24,5	16	32	36	EVGE-22L-12EO
L	160	22	G 1"	52,5	25,5	18	41	36	EVGE-22L-16EO
L	160	28	G 3/4"	52,5	25,5	16	32	41	EVGE-28L-12EO
L	160	28	G 1"	54,0	25,5	18	41	41	EVGE-28L-16EO
L	160	35	G 1 1/4"	63,5	32,0	20	50	50	EVGE-35L-20EO
L	160	42	G 1 1/2"	70,0	32,0	22	55	60	EVGE-42L-24EO

Reihe Series	Druck Pressure PN	Rohr A.D. Tube O.D. D1	Gewinde Thread G	Ca. Maße Approx. Dimensions					Bestellzeichen Order-Code Standard
				L1	L2	i	SW1	SW3	
S	630	6	G 1/8"	32,5	19,0	8	14	17	EVGE-6S-2EO
S	630	6	G 1/4"	39,5	20,5	12	19	17	EVGE-6S-4EO
S	630	8	G 1/4"	41,0	20,5	12	19	19	EVGE-8S-4EO
S	630	8	G 3/8"	42,5	20,5	12	22	19	EVGE-8S-6EO
S	630	10	G 1/4"	39,5	20,5	12	19	22	EVGE-10S-4EO
S	630	10	G 3/8"	44,0	21,0	12	22	22	EVGE-10S-6EO
S	630	10	G 1/2"	47,0	21,0	14	27	22	EVGE-10S-8EO
S	630	12	G 1/4"	42,0	21,5	12	19	24	EVGE-12S-4EO
S	630	12	G 3/8"	45,0	22,0	12	22	24	EVGE-12S-6EO
S	630	12	G 1/2"	48,5	22,5	14	27	24	EVGE-12S-8EO
S	630	14	G 1/2"	51,0	24,5	14	27	27	EVGE-14S-8EO
S	400	16	G 3/8"	48,5	26,0	12	22	30	EVGE-16S-6EO
S	400	16	G 1/2"	51,0	26,0	14	27	30	EVGE-16S-8EO
S	400	16	G 3/4"	54,5	26,0	16	32	30	EVGE-16S-12EO
S	400	20	G 1/2"	56,5	29,5	14	27	36	EVGE-20S-8EO
S	400	20	G 3/4"	59,0	29,0	16	32	36	EVGE-20S-12EO
S	400	25	G 3/4"	63,0	33,0	16	32	46	EVGE-25S-12EO
S	400	25	G 1"	66,0	33,0	18	41	46	EVGE-25S-16EO
S	400	30	G 1 1/4"	71,0	34,0	20	50	50	EVGE-30S-20EO
S	315	38	G 1 1/2"	83,5	40,0	22	55	60	EVGE-38S-24EO