



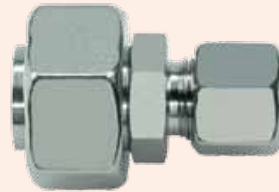
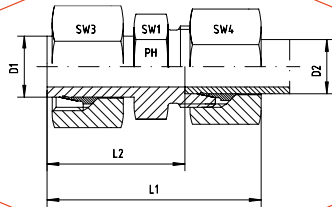
KONUS-REDUZIERANSCHLÜSSE

TUBE END REDUCERS



PRODUKTE / PRODUCTS

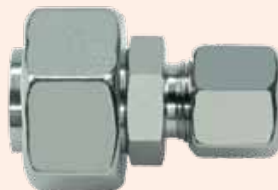
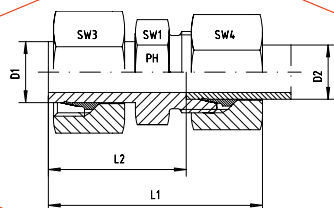
ERLÄUTERUNG / EXPLANATION



Anschluss D1 ist vormontiert. Die Fertigmontage erfolgt im Stutzen mit ca. 1/2 Umdrehung der Überwurfmutter über den Punkt des deutlich spürbaren Kraftanstieges.

Port D1 is pre-assembled. Final assembly in appropriate body with approx. 1/2 turn beyond the point of clearly perceptible resistance.

Reihe Series	Druck Pressure PN	Rohr A.D. Tube O.D. D1	Rohr A.D. Tube O.D. D2	Ca. Maße Approx. Dimensions					Bestellzeichen Order-Code Standard
				L1	L2	SW1	SW3	SW4	
L	315	8	6	43,5	25,5	12	17	14	KOR-8L-6L
L	315	10	6	44,0	29,0	12	19	14	KOR-10L-6L
L	315	10	8	44,0	29,0	14	19	17	KOR-10L-8L
L	315	12	6	44,0	29,0	14	22	14	KOR-12L-6L
L	315	12	8	44,0	29,0	14	22	17	KOR-12L-8L
L	315	12	10	45,0	30,0	17	22	19	KOR-12L-10L
L	315	15	6	45,5	30,5	17	27	14	KOR-15L-6L
L	315	15	8	45,5	30,5	17	27	17	KOR-15L-8L
L	315	15	10	46,5	31,5	17	27	19	KOR-15L-10L
L	315	15	12	46,5	31,5	19	27	22	KOR-15L-12L
L	315	18	6	47,5	32,5	19	32	14	KOR-18L-6L
L	315	18	8	47,5	32,5	19	32	17	KOR-18L-8L
L	315	18	10	48,0	33,0	19	32	19	KOR-18L-10L
L	315	18	12	48,0	33,0	19	32	22	KOR-18L-12L
L	315	18	15	49,0	34,0	22	32	27	KOR-18L-15L
L	160	22	6	50,0	35,0	24	36	14	KOR-22L-6L
L	160	22	8	50,0	35,0	24	36	17	KOR-22L-8L
L	160	22	10	51,0	36,0	24	36	19	KOR-22L-10L
L	160	22	12	51,0	36,0	24	36	22	KOR-22L-12L
L	160	22	15	52,0	37,0	24	36	27	KOR-22L-15L
L	160	22	18	53,0	36,5	27	36	32	KOR-22L-18L
L	160	28	6	50,0	35,0	30	41	14	KOR-28L-6L
L	160	28	8	50,0	35,0	30	41	17	KOR-28L-8L
L	160	28	10	51,0	36,0	30	41	19	KOR-28L-10L
L	160	28	12	51,0	36,0	30	41	22	KOR-28L-12L
L	160	28	15	52,0	37,0	30	41	27	KOR-28L-15L
L	160	28	18	54,0	37,5	30	41	32	KOR-28L-18L
L	160	28	22	55,5	39,0	30	41	36	KOR-28L-22L
L	160	35	6	58,0	43,0	36	50	14	KOR-35L-6L
L	160	35	8	58,0	43,0	36	50	17	KOR-35L-8L
L	160	35	10	59,0	44,0	36	50	19	KOR-35L-10L
L	160	35	12	59,0	44,0	36	50	22	KOR-35L-12L
L	160	35	15	60,0	45,0	36	50	27	KOR-35L-15L
L	160	35	18	61,0	44,5	36	50	32	KOR-35L-18L
L	160	35	22	63,0	46,5	36	50	36	KOR-35L-22L
L	160	35	28	63,0	46,5	41	50	41	KOR-35L-28L
L	160	42	6	59,0	44,0	36	60	14	KOR-42L-6L
L	160	42	8	59,0	44,0	46	60	17	KOR-42L-8L
L	160	42	10	60,0	45,0	46	60	19	KOR-42L-10L
L	160	42	12	60,0	45,0	46	60	22	KOR-42L-12L
L	160	42	15	61,0	46,0	46	60	27	KOR-42L-15L
L	160	42	18	59,0	44,0	46	60	32	KOR-42L-18L
L	160	42	22	63,0	46,5	46	60	36	KOR-42L-22L
L	160	42	28	64,0	47,5	46	60	41	KOR-42L-28L
L	160	42	35	69,0	47,5	46	60	50	KOR-42L-35L



Anschluss D1 ist vormontiert. Die Fertigmontage erfolgt im Stutzen mit ca. 1/2 Umdrehung der Überwurfmutter über den Punkt des deutlich spürbaren Kraftanstieges.

Port D1 is pre-assembled. Final assembly in appropriate body with approx. 1/2 turn beyond the point of clearly perceptible resistance.

Reihe Series	Druck Pressure PN	Rohr A.D. Tube O.D. D1	Rohr A.D. Tube O.D. D2	Ca. Maße Approx. Dimensions					Bestellzeichen Order-Code Standard
				L1	L2	SW1	SW3	SW4	
S	630	8	6	47,0	32,0	14	19	17	KOR-8S-6S
S	630	10	6	48,0	33,0	14	22	17	KOR-10S-6S
S	630	10	8	48,0	33,0	17	22	19	KOR-10S-8S
S	630	12	6	50,0	35,0	14	24	17	KOR-12S-6S
S	630	12	8	50,0	35,0	17	24	19	KOR-12S-8S
S	630	12	10	51,0	34,5	19	24	22	KOR-12S-10S
S	630	14	6	50,0	35,0	17	27	17	KOR-14S-6S
S	630	14	8	50,0	35,0	17	27	19	KOR-14S-8S
S	630	14	10	51,0	34,5	19	27	22	KOR-14S-10S
S	630	14	12	51,0	34,5	22	27	24	KOR-14S-12S
S	400	16	6	54,0	39,0	17	30	17	KOR-16S-6S
S	400	16	8	54,0	39,0	17	30	19	KOR-16S-8S
S	400	16	10	55,0	38,5	19	30	22	KOR-16S-10S
S	400	16	12	55,0	38,5	22	30	24	KOR-16S-12S
S	400	16	14	58,0	40,0	22	30	27	KOR-16S-14S
S	400	20	6	58,5	43,5	22	36	17	KOR-20S-6S
S	400	20	8	58,5	43,5	22	36	19	KOR-20S-8S
S	400	20	10	59,5	43,0	22	36	22	KOR-20S-10S
S	400	20	12	59,5	43,0	22	36	24	KOR-20S-12S
S	400	20	14	60,5	42,5	22	36	27	KOR-20S-14S
S	400	20	16	63,0	44,5	24	36	30	KOR-20S-16S
S	400	25	6	59,0	44,0	27	46	17	KOR-25S-6S
S	400	25	8	59,0	44,0	27	46	19	KOR-25S-8S
S	400	25	10	61,0	44,5	27	46	22	KOR-25S-10S
S	400	25	12	63,0	46,5	27	46	24	KOR-25S-12S
S	400	25	14	64,0	46,0	27	46	27	KOR-25S-14S
S	400	25	16	67,0	48,5	27	46	30	KOR-25S-16S
S	400	25	20	70,0	48,5	30	46	36	KOR-25S-20S
S	400	30	6	69,0	54,0	32	50	17	KOR-30S-6S
S	400	30	8	69,0	54,0	32	50	19	KOR-30S-8S
S	400	30	10	70,0	53,5	32	50	22	KOR-30S-10S
S	400	30	12	70,0	53,5	32	50	24	KOR-30S-12S
S	400	30	14	71,0	53,0	32	50	27	KOR-30S-14S
S	400	30	16	73,0	54,5	32	50	30	KOR-30S-16S
S	400	30	20	76,0	54,5	32	50	36	KOR-30S-20S
S	400	30	25	81,5	57,5	36	50	46	KOR-30S-25S
S	250	38	6	70,0	55,0	41	60	17	KOR-38S-6S
S	250	38	8	70,0	55,0	41	60	19	KOR-38S-8S
S	250	38	10	71,0	54,5	41	60	22	KOR-38S-10S
S	250	38	12	71,0	54,5	41	60	24	KOR-38S-12S
S	250	38	14	74,0	56,0	41	60	27	KOR-38S-14S
S	250	38	16	74,0	55,5	41	60	30	KOR-38S-16S
S	250	38	20	79,0	57,5	41	60	36	KOR-38S-20S
S	250	38	25	84,0	60,0	41	60	46	KOR-38S-25S
S	250	38	30	87,0	60,5	46	60	50	KOR-38S-30S