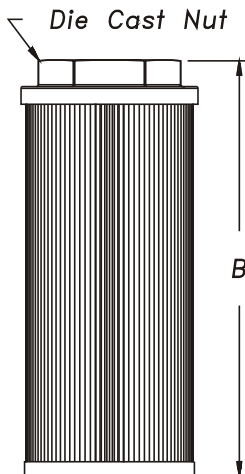
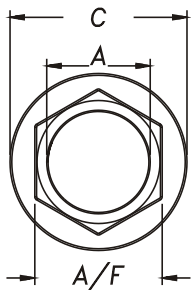


Suction Strainer - S C 3

- REUSABLE SS 100 MESH / 149 MICRON STD.
- ALUMINIUM DIE CAST NUT
- STEEL CAP / SUPPORT TUBE
- CONTINUOUS EPOXY BOND
- MAX. WORKING TEMP. 80° C.
- SUITABLE FOR HYDRAULIC / MINERAL OIL
- FLEXIBLE MAGNETIC WRAP AVAILABLE

149 Micron, Aluminium, BSPP		
0347	To Suit	LPM
SSA020-08	1/2"	20
SSA028-12	3/4"	28
SSA040-16	1"	40
SSA060-20	1.1/4"	60
SSA080-24	1.1/2"	80
SSA120-24	1.1/2"	120
SSA160-32	2"	160
SSA200-32	2"	200
SSA300-40	2.1/2"	300
SSA400-40	3"	400



MODEL NO	FLOW LPM	THREAD SIZE A	THREAD CODE	OVERALL LENGTH B	DIA NUT C	NUT A/F	SCREEN AREA (SQ. CMS)	WT KGS	MAGNET WRAP
SC 3 - 002	8	1/4	02	90	46	24	187	0.10	2
SC 3 - 003	12	3/8	03	90	46	24	187	0.10	2
SC 3 - 005	20	1/2	04	105	46	30	226	0.10	2
SC 3 - 007	28	3/4	06	109	64	35	406	0.20	2
SC 3 - 010	40	1	08	139	64	46	542	0.20	2
SC 3 - 015	60	1-1/4	10	139	86	51	929	0.30	2
SC 3 - 020	80	1-1/2	12	168	86	60	1161	0.35	2
SC 3 - 030	120	1-1/2	12	200	86	60	1393	0.40	2
SC 3 - 040	160	2	16	235	100	70	1806	0.55	2
SC 3 - 050	200	2	16	260	100	70	2032	0.60	2
SC 3 - 075	300	2-1/2	20	211	150	90	2787	0.85	3
SC 3 - 100	400	3	24	272	150	100	3677	1.00	3
SC 3 - 150	600	3	24	345	150	100	4838	1.25	3

MODEL CODE : ASSEMBLY

SC 3	- 010	- **	- **	- **	- **	- **
SERIES	SIZE	PORT THDS. SIZE	PORT THDS. CONNECTION	MICRONS. OPTIONAL #	FEATURE. SPECIAL 1	FEATURE. SPECIAL 2
		REFER TABLE OMIT IF STD	B-BSPP - STD N-NPT - OPTIONAL	149 - SS 100 MESH STD 125 - SS 120 MESH 100 - SS 150 MESH 074 - SS 200 MESH 063 - SS 250 MESH Also - 30 / 60 MESH	R B 3 - 3 PSI ByPass Optional	M - Magnet Wrap Optional

OMIT IF STANDARAD

CONSULT FACTORY, FOR OPTIONAL / SPECIAL FEATURE

DIMENSIONS IN MM FOR REFERENCE ONLY