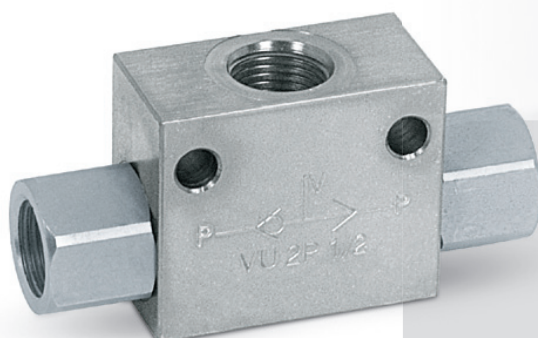


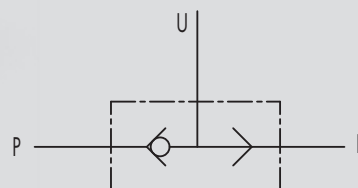
6.5 - VALVOLE COMMUTATRICI PER L'UTILIZZO DI DUE POMPE ALTERNATE

TIPO/TYPE
VU2P

6.5 - SHUTTLE VALVES



SCHEMA IDRAULICO
HYDRAULIC DIAGRAM



IMPIEGO:

Valvola utilizzata per selezionare, tra due segnali indipendenti di pressione, quello con valore maggiore ed escludere l'altro.

MATERIALI E CARATTERISTICHE:

Corpo: acciaio zincato
Guarnizioni: BUNA N standard
Tenuta: a sfera

MONTAGGIO:

Collegare gli attacchi P alle linee da selezionare e U alla linea da alimentare.

USE AND OPERATION:

This valve is used to select higher pressure between two pressure lines.

MATERIALS AND FEATURES:

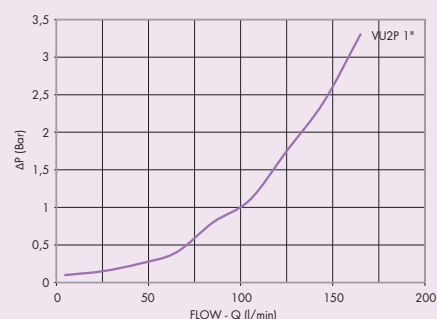
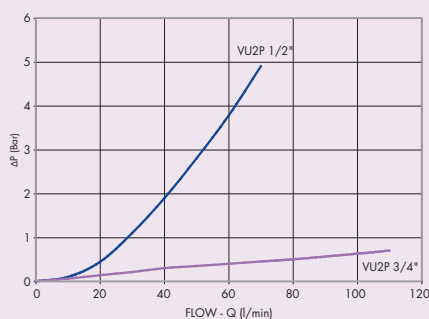
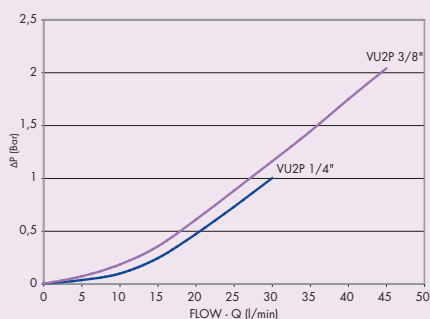
Body: zinc-plated steel
Seal: BUNA N standard
Tightness: ball type

APPLICATIONS:

Connect ports P to the 2 lines to select and U to the line to feed .

PERDITE DI CARICO PRESSURE DROPS CURVE

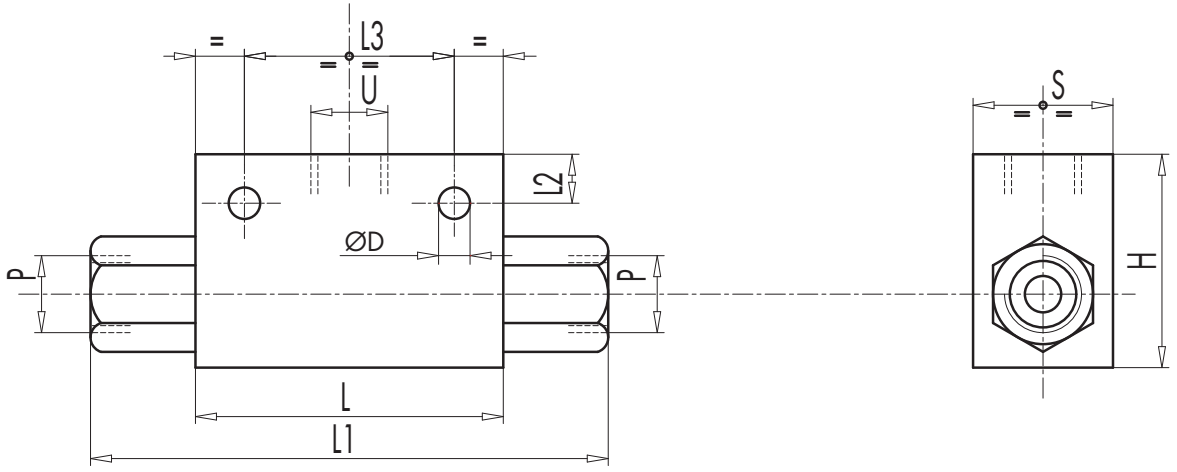
Temperatura olio: 50°C - Viscosità olio: 30 cSt
Oil temperature: 50°C - Oil viscosity: 30 cSt





| CODICE CODE | SIGLA TYPE | PORTATA MAX MAX FLOW Lt./min | PRESSIONE MAX MAX PRESSURE Bar |
|----------------|---------------|------------------------------------|--------------------------------------|
| V0666 | VU2P 1/4" | 30 | 450 |
| V0668 | VU2P 3/8" | 45 | 450 |
| V0670 | VU2P 1/2" | 70 | 450 |
| V0680 | VU2P 3/4" | 110 | 350 |
| V0685 | VU2P 1" | 150 | 300 |

6



| CODICE CODE | SIGLA TYPE | U - P | L | L1 | L2 | L3 | H | S | ØD | PESO WEIGHT |
|----------------|---------------|--------|----|-----|----|----|----|----|------|----------------|
| | | GAS | mm | mm | mm | mm | mm | mm | mm | Kg |
| V0666 | VU2P 1/4" | G 1/4" | 60 | 104 | 9 | 44 | 40 | 30 | 8,5 | 0,560 |
| V0668 | VU2P 3/8" | G 3/8" | 60 | 104 | 9 | 44 | 40 | 30 | 8,5 | 0,530 |
| V0670 | VU2P 1/2" | G 1/2" | 60 | 104 | 12 | 44 | 50 | 30 | 8,5 | 0,652 |
| V0680 | VU2P 3/4" | G 3/4" | 80 | 130 | 12 | 44 | 58 | 35 | 8,5 | 1,086 |
| V0685 | VU2P 1" | G 1" | 80 | 120 | 11 | 60 | 80 | 50 | 10,5 | 1,870 |