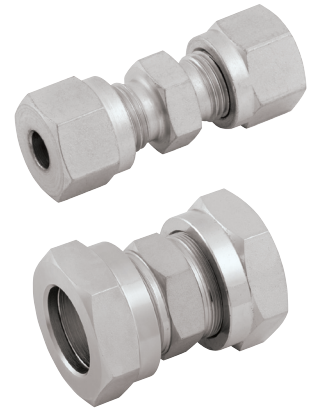
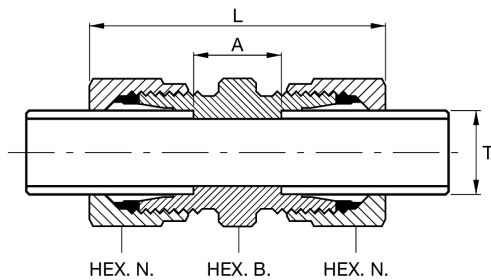
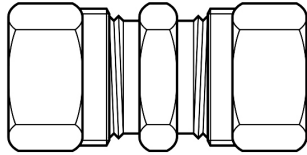


Hydraulic Imperial Compression Fittings



O.D. TUBES

Part No.	Tube Dia. T.	Nut Hexagon N. A/F	Body Hexagon B. A/F	Tube Abutment A.	O/A Length L.
2018-6730	¼"	.710"	.625"	⅜"	1 ³ / ₃₂ "
2018-6748	⅝"	.710"	.710"	⅜"	1 ²⁵ / ₃₂ "
2018-6755	⅜"	.820"	.710"	⅜"	1 ¹ / ₁₆ "
2018-6789	½"	.920"	.820"	7/16"	1 ¹ / ₁₆ "
2018-6797	⅝"	1.10"	.920"	7/16"	2"
2018-6805	¾"	1.20"	1.10"	½"	2½"
2018-6813	7/8"	1.375"	1.20"	⅝"	2 ⁵ / ₁₆ "
2018-6821	1"	1.67"	1.48"	11/16"	2 ⁹ / ₁₆ "
2018-6839	1¼"	2.05"	1.67"	1 ⁵ / ₁₆ "	2 ⁷ / ₁₆ "

N.B. TUBES

Part No.	N.B. Tube Size T.	Nut Hexagon N.	Body Hexagon B.	Tube Abutment A.	O/A Length L.
2018-7142	¼"	1.10"	.920"	7/16"	2"
2018-7175	⅜"	1.20"	1.10"	½"	2½"
2018-7183	½"	1.375"	1.20"	⅝"	2 ⁵ / ₁₆ "
2018-7191	¾"	1.67"	1.48"	¾"	2 ³ / ₄ "
2018-7209	1"	2.05"	1.67"	1 ⁵ / ₁₆ "	2 ⁷ / ₁₆ "
2018-7225	1½"	3.02"	2.58"	1 ¹ / ₈ "	3½"

Technical Data:

- 1" O.D. 690 bar (10,000 psi) hydraulic or 345 bar (5,000 psi) gas.
 1.1/4" O.D. 552 bar (8,000 psi) hydraulic or 276 bar (4,000 psi) gas.

N.B. Couplings are suitable for the following pressures, up to and including:

- 3/4" N.B. 690 bar (10,000 psi) hydraulic or 345 bar (5,000 psi) gas.
 1" N.B. 552 bar (8,000 psi) hydraulic or 276 bar (4,000 psi) gas.
 1.1/2" N.B. 345 bar (5,000 psi) hydraulic or 173 bar (2,500 psi) gas.