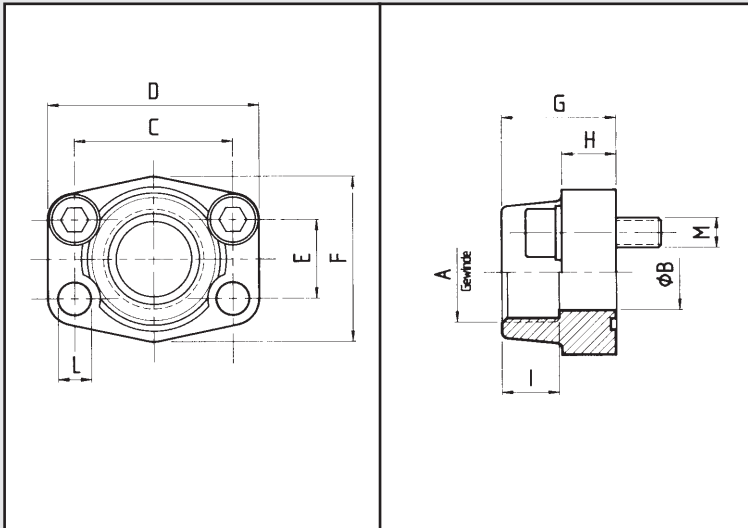


# SAE-Einschraubflansch BSPP-Gewinde

SAE-pipe threaded flange BSPP

Hochdruckflansche



<b>Bestellbezeichnung:</b> Ordering code:	<b>S355J2G3</b>	<b>1.4404</b>
• nur Flansch flange only	AFS-...G	AFX-...G
• Flansch incl. metrischem Schraubensatz und O-Ring flange including metric bolts and o-ring	AFS-...GM	AFX-...GMX
• Flansch incl. UNC-Schraubensatz und O-Ring flange including UNC bolts and o-ring	AFS-...GU	AFX-...GUX

Material: 1. S355J2G3

2. 1.4404 rostfrei  
316L stainless

maximaler Betriebsdruck kg/cm <sup>2</sup>		S.A.E. Baugröße	Typ	Abmessungen										Schrauben		Gewicht kg.
maximum recommended working pressure kg/cm <sup>2</sup>		nominal flange size, in	type	dimensions										bolts		weight kg.
Schraube Festigkeitsklasse 8.8   10.9			Standarddruckreihe Standard pressure	A	B	C	D	E	F	G	H	I	L	M		
															metr.	
350	350	1/2"	AFS 080 G	G 1/2"	13	38,10	54	17,48	46	36	16	19	9,0	M 8x30	5/16 x 1 1/4	0,25
350	350	1/2"	AFS 080 G-038	G 3/8"	13	38,10	54	17,48	46	36	16	19	9,0	M 8x30	5/16 x 1 1/4	0,28
350	350	3/4"	AFS 100 G	G 3/4"	19	47,63	65	22,23	50	36	18	19	11,0	M 10x35	3/8 x 1 1/2	0,39
350	350	3/4"	AFS 100 G-012	G 1/2"	13	47,63	65	22,23	50	36	18	19	11,0	M 10x35	3/8 x 1 1/2	0,42
250	315	1"	AFS 102 G	G 1"	25	52,37	70	26,19	55	38	18	22	11,0	M 10x35	3/8 x 1 1/2	0,46
250	315	1"	AFS 102 G-034	G 3/4"	19	52,37	70	26,19	55	38	18	20	11,0	M 10x35	3/8 x 1 1/2	0,49
250	315	1"	AFS 102 G-012	G 1/2"	13	52,37	70	26,19	55	38	18	22	11,0	M 10x35	3/8 x 1 1/2	0,52
200	250	1 1/4"	AFS 104 G	G 1 1/4"	32	58,72	79	30,18	68	41	21	22	11,5	M 10x40	7/16 x 1 1/2	0,66
200	250	1 1/4"	AFS 104 G	G 1 1/4"	32	58,72	79	30,18	68	41	21	22	13,0	M 12x40	-	0,66
200	250	1 1/4"	AFS 104 G-100	G 1"	25	58,72	81	30,18	65	42	25	22	11,5	M 10x40	7/16 x 1 3/4	0,75
200	250	1 1/4"	AFS 104 G-100	G 1"	25	58,72	81	30,18	65	42	25	22	13,0	M 12x40	-	0,75
200	250	1 1/4"	AFS 104 G-034	G 3/4"	19	58,72	79	30,18	68	41	21	22	11,5	M 10x40	7/16 x 1 1/2	0,79
200	200	1 1/2"	AFS 106 G	G 1 1/2"	38	69,85	93	35,71	78	45	25	24	13,5	M 12x45	1/2 x 1 3/4	1,05
200	200	1 1/2"	AFS 106 G-114	G 1 1/4"	32	69,85	95	35,71	78	45	27	24	13,5	M 12x45	1/2 x 1 3/4	1,10
200	200	1 1/2"	AFS 106 G-100	G 1"	25	69,85	93	35,71	78	45	25	24	13,5	M 12x45	1/2 x 1 3/4	1,16
200	200	1 1/2"	AFS 106 G-034	G 3/4"	19	69,85	93	35,71	78	45	25	24	13,5	M 12x45	1/2 x 1 3/4	1,23
160	200	2"	AFS 108 G	G 2"	51	77,77	102	42,88	90	45	25	30	13,5	M 12x45	1/2 x 1 3/4	1,19
160	200	2"	AFS 108 G-112	G 1 1/2"	38	77,77	102	42,88	90	45	25	26	13,5	M 12x45	1/2 x 1 3/4	1,25
160	200	2"	AFS 108 G-114	G 1 1/4"	32	77,77	102	42,88	90	45	25	24	13,5	M 12x45	1/2 x 1 3/4	1,40
160	200	2"	AFS 108 G-100	G 1"	25	77,77	102	42,88	90	45	25	26	13,5	M 12x45	1/2 x 1 3/4	1,44
100	160	2 1/2"	AFS 110 G	G 2 1/2"	63	88,90	114	50,80	105	50	25	30	13,5	M 12x45	1/2 x 1 3/4	1,40
100	160	2 1/2"	AFS 110 G-200	G 2"	51	88,90	114	50,80	105	50	25	30	13,5	M 12x45	1/2 x 1 3/4	1,45
100	138	3"	AFS 112 G	G 3"	73	106,38	134	61,93	124	50	27	34	17,5	M 16x50	5/8 x 2	2,15
100	138	3"	AFS 112 G-212	G 2 1/2"	63	106,38	134	61,93	124	50	27	30	17,5	M 16x50	5/8 x 2	2,25
35	35	3 1/2"	AFS 114 G	G 3 1/2"	89	120,65	152	69,85	136	48	27	34	17,5	M 16x50	5/8 x 2	2,40
35	35	3 1/2"	AFS 114 G-300	G 3"	73	120,65	152	69,85	136	48	27	34	17,5	M 16x50	5/8 x 2	2,50
35	35	4"	AFS 116 G	G 4"	99	130,18	162	77,77	146	48	27	34	17,5	M 16x50	5/8 x 2	2,85
35	35	4"	AFS 116 G-312	G 3 1/2"	89	130,18	162	77,77	146	48	27	34	17,5	M 16x50	5/8 x 2	3,00
35	35	5"	AFS 118 G	G 5"	120	152,40	184	92,10	180	50	28	30	17,5	M 16x50	5/8 x 2	5,80