

HYDRAULIC POWER UNITS

POWER PACKS AND POWER UNITS

PRODUCT	PAGE
FLOWFIT 12VDC SINGLE ACTING HYDRAULIC POWER PACKS	120
FLOWFIT 12VDC DOUBLE ACTING, NG6 (CETOP 3) SOLENOID VALVE POWER PACKS	122
FLOWFIT 12VDC DOUBLE ACTING, DOUBLE NG6 (CETOP 3) SOLENOID VALVE POWER PACKS	124
FLOWFIT 24VDC SINGLE ACTING HYDRAULIC POWER PACKS	126
FLOWFIT 24VDC DOUBLE ACTING, NG6 (CETOP 3) SOLENOID VALVE POWER PACKS	128
FLOWFIT 24VDC DOUBLE ACTING, DOUBLE NG6 (CETOP 3) SOLENOID VALVE POWER PACKS	130
ACCESSORIES	132
FLOWFIT MOBILE ENGINE DRIVEN HYDRAULIC POWER UNITS ON WHEELS	136



FROM ONLY
£227.19
+VAT



FROM ONLY
£282.09
+VAT



FROM ONLY
£83.84
+VAT



QUALITY PRODUCTS



FREE ADVICE



FLOWFIT 12VDC SINGLE ACTING HYDRAULIC POWER PACKS

www.flowfitonline.com
TECH. DATA SHEET
PPPU1



The Flowfit 12VDC Single Acting power pack is ideal for use in the following applications:

- Tail Lift
- Trailer/Tipper
- Hand operated lift stacker
- Scissor Lift Platform
- Aerial Platform

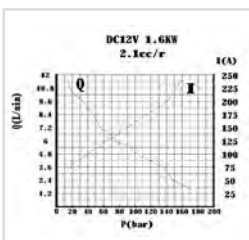
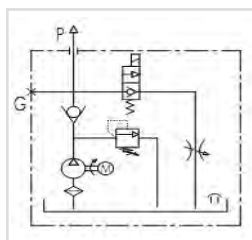
The Flowfit 12VDC Single Acting power pack is a compact and quiet unit, able to deliver a flow rate of up to 5 litres a minute at 160 bar. The compact design includes a lowering solenoid valve, relief valve and flow controller mounted within the housing and comes complete with a detachable pre-wired 2 button pendant and 4.5 litre plastic tank as standard.

Options available include an 8.0 litre plastic tank for increased capacity on larger systems and a wireless remote, operated by key fob.

The Flowfit 12VDC Single Acting power pack will require a high capacity battery and a suitable in-line fuse for normal operation.

The motor is designed for intermittent use (S3) which is defined as a sequence of identical cycles of 10 minute duration. The cycle comprises a period of on-load (td) operation in which the motor may reach its maximum permitted temperature, followed by an off-load period (tm) of time, insufficient for the motor to return to ambient temperature.

The value of S3 on this motor equates to 7% or 42 seconds of on-load operation in a ten minute period.



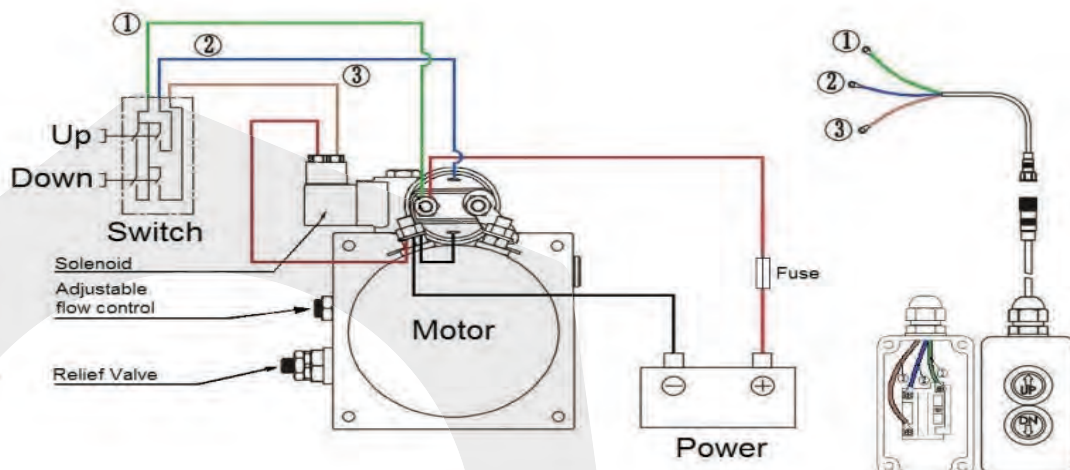
Flowfit 12VDC Single Acting Hydraulic Powerunit

POWERUNIT PACKAGE to operate a single acting cylinder on any trailer or tipper application, or any single acting application complete with detachable two button pendant.

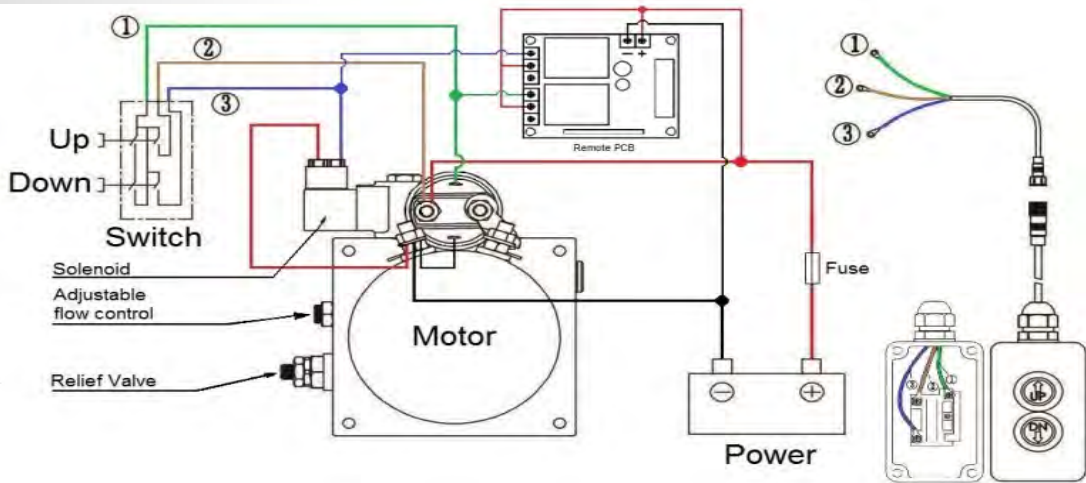
- 12VDC powerunit.
- 2.1cc/rev gear pump.
- 1.6kw 12VDC electric motor c/w relay and plastic motor cover. 4.5 Litre or 8.0 Litre reservoir c/w drain plug.
- Powerpack complete with suction strainer, return oil conveyor and filler breather.
- Horizontal mounting.
- Max pressure 200 bar.
- Relief valve set at 160 bar but adjustable from 40-200 bar as standard.
- Max flow 5 l/min.
- Adjustable flow control for cylinder decent control.
- 12VDC let down valve, relief and P line check.
- Port size 3/8" BSP.
- 2 Button detachable pendant on a 4 metre lead.
- Suitable for all single acting applications.

WITH MANY ADDED FEATURES SUCH AS FLOW CONTROL ON CYLINDER DECENT, DETACHABLE PENDANTS FOR ADDED SECURITY, REMOVEABLE PLASTIC MOTOR COVER AND A VARIATION ON WHICH RELIEF VALVE SPRING IS FITTED YOU ARE GETTING AN EXCEPTIONALLY GOOD QUALITY PRODUCT AT A VERY COMPETITIVE PRICE.

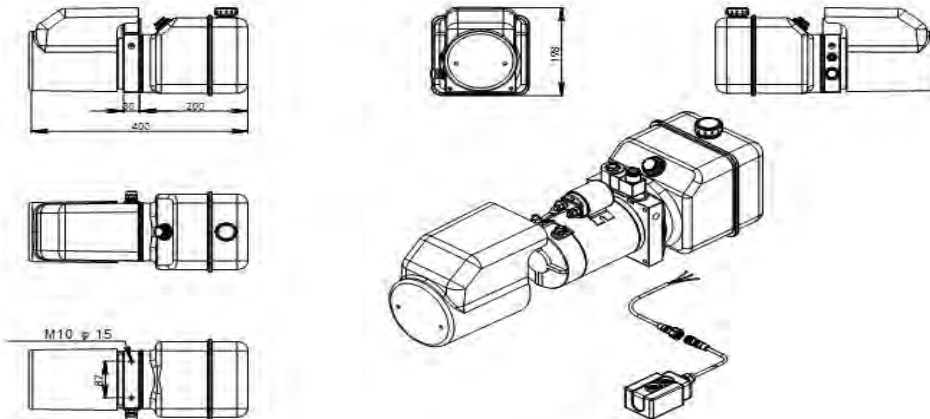
SINGLE ACTING WIRING DIAGRAM



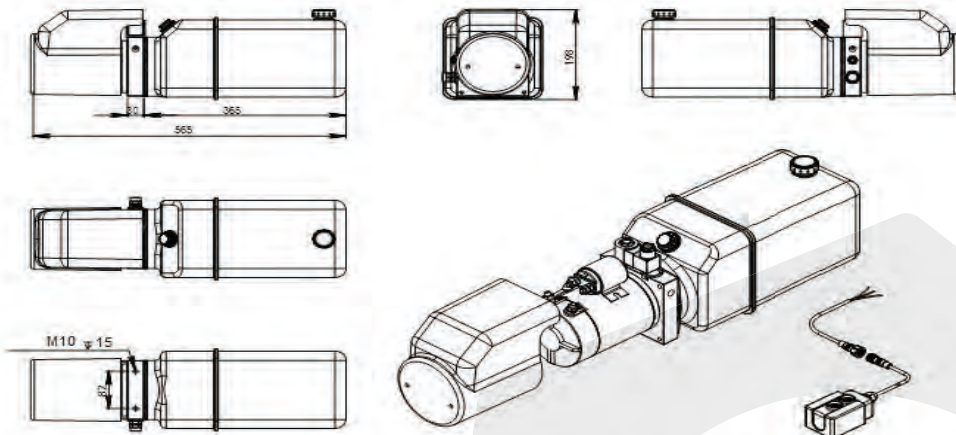
SINGLE ACTING (WITH REMOTE) WIRING DIAGRAM



4.5 LITRE POWER PACK DIMENSIONS



8.0 LITRE POWER PACK DIMENSIONS



PRODUCT REFERENCE	DESCRIPTION	NETT. PRICE	
		£ STERLING	€ EUROS
ZZ003468	Flowfit 12VDC single acting hydraulic powerpack, 4.5 litre reservoir c/w 2 button pendant. 5 l/min @ 160bar.	£141.70	€ 191.29
ZZ003834	Flowfit 12VDC single acting hydraulic powerpack, 8.0 litre reservoir c/w 2 button pendant. 5 l/min @ 160bar.	£170.39	€ 230.03

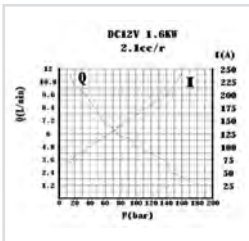
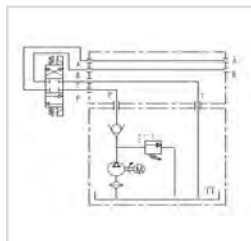
FLOWFIT 12VDC DOUBLE ACTING, NG6 (CETOP 3) SOLENOID VALVE POWER PACKS

www.flowfitonline.com
TECH. DATA SHEET
PPU2



The Flowfit 12VDC Double Acting power pack is ideal for use in the following applications:

- Tail Lift
- Hoists/Winches
- Trailer/Tipper
- Compactors
- Hand operated lift stacker
- Parking Systems/Barriers
- Scissor Lift Platform
- Security Gates
- Aerial Platform
- Dock Leveler



The Flowfit 12VDC Double Acting power pack is a compact and quiet unit, able to deliver a flow rate of up to 5 litres a minute at 160 bar. The compact design includes a CETOP 3 double acting solenoid valve, relief valve and flow controller mounted within the housing and comes complete with a detachable pre-wired 2 button pendant and 4.5 litre plastic tank as standard.

Options available include an 8.0 litre plastic tank for increased capacity on larger systems.

The Flowfit 12VDC Double Acting power pack will require a high capacity battery and a suitable in-line fuse for normal operation.

The motor is designed for intermittent use (S3) which is defined as a sequence of identical cycles of 10 minute duration. The cycle comprises a period of on-load (td) operation in which the motor may reach its maximum permitted temperature, followed by an off-load period (tm) of time, insufficient for the motor to return to ambient temperature. The value of S3 on this motor equates to 7% or 42 seconds of on-load operation in a ten minute period.

If the part number is not listed please ask the Flowfit Sales Team

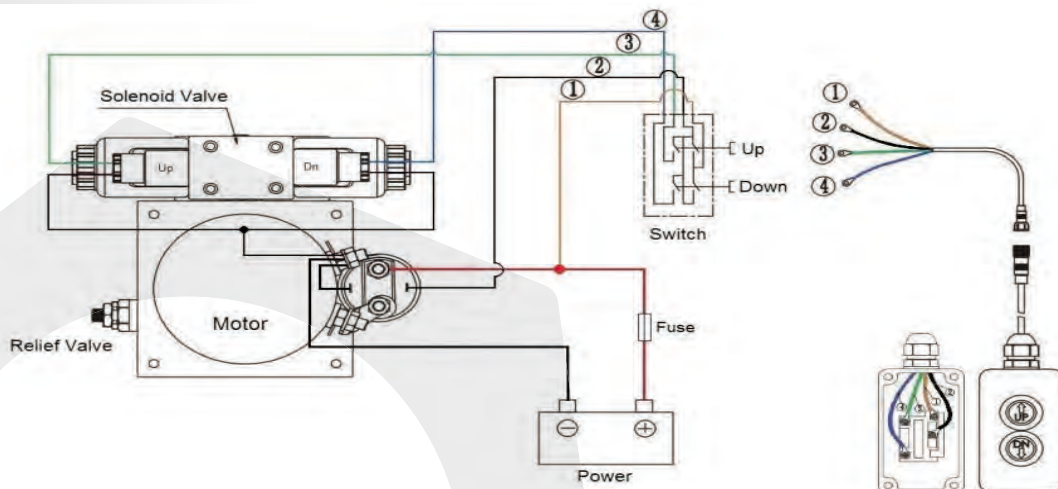
Flowfit 12VDC Double Acting NG6 Solenoid Valve Hydraulic Powerunit

POWERUNIT PACKAGE to operate a double acting cylinder on a variety of applications, complete with detachable two button pendant.

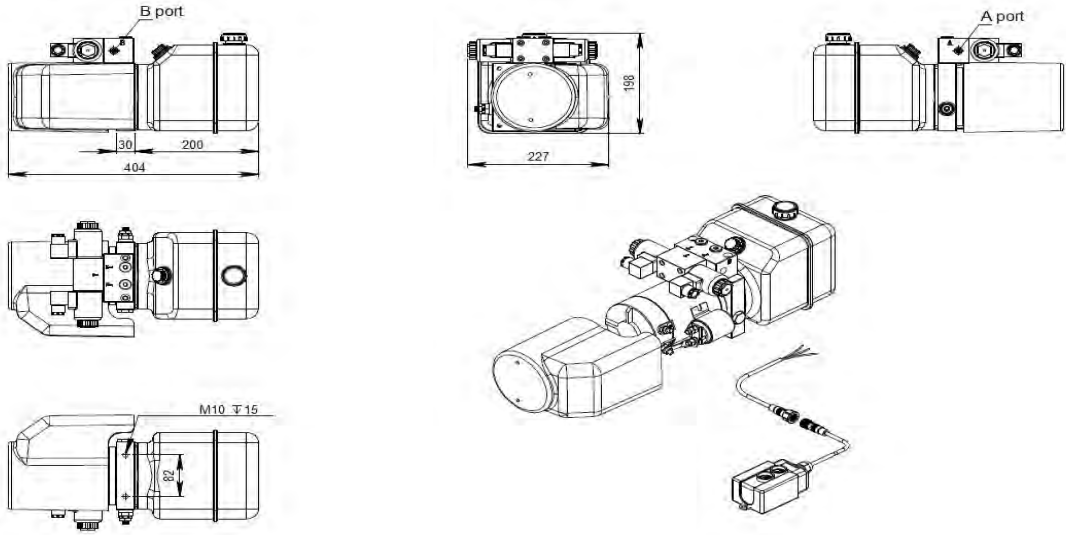
- 12VDC powerunit.
- 2.1cc/rev gear pump.
- 1.6kw 12VDC electric motor c/w relay and plastic motor cover.
- 4.5 Litre or 8.0 Litre reservoir c/w drain plug.
- Powerpack complete with suction strainer, return oil conveyor and filler breather.
- Horizontal mounting.
- Max pressure 200 bar.
- Relief valve set at 160 bar but adjustable from 40-200 bar as standard.
- Max flow 5 l/min.
- Relief valve and P line check.
- Port size 3/8" BSP.
- 2 Button detachable pendant on a 4 metre lead.
- Suitable for all double acting applications.

WITH MANY ADDED FEATURES SUCH AS DETACHABLE PENDANTS FOR ADDED SECURITY, REMOVEABLE PLASTIC MOTOR COVER AND A VARIATION ON WHICH RELIEF VALVE SPRING IS FITTED YOUR ARE GETTING AN EXCEPTIONALLY GOOD QUALITY PRODUCT AT A VERY COMPETITIVE PRICE.

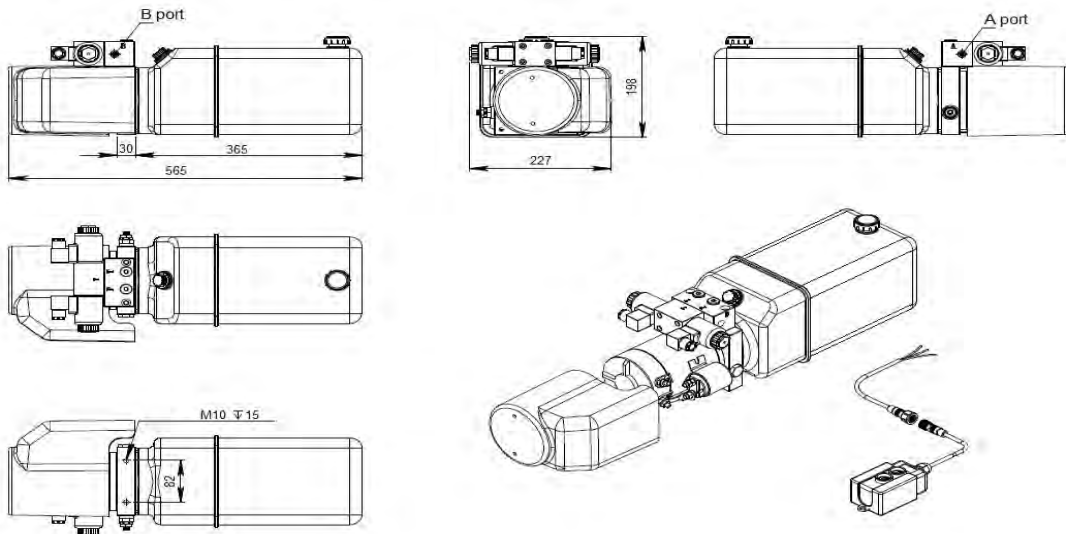
DOUBLE ACTING, NG6 SOLENOID VALVE WIRING DIAGRAM



4.5 LITRE POWER PACK DIMENSIONS

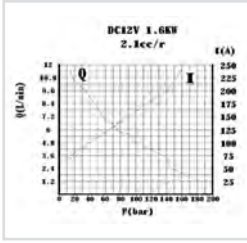
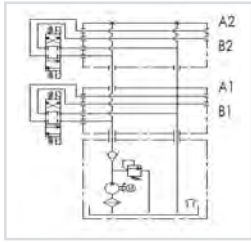


8.0 LITRE POWER PACK DIMENSIONS



PRODUCT REFERENCE	DESCRIPTION	NETT. PRICE	
		£ STERLING	€ EUROS
ZZ004232	Flowfit 12VDC double acting, single solenoid hydraulic powerpack, 4.5 litre reservoir c/w 2 button pendant. 5 l/min @ 160bar.	£227.19	€ 306.71
ZZ004233	Flowfit 12VDC double acting, single solenoid hydraulic powerpack, 8.0 litre reservoir c/w 2 button pendant. 5 l/min @ 160bar.	£239.80	€ 323.73

FLOWFIT 12VDC DOUBLE ACTING, DOUBLE NG6 (CETOP 3) SOLENOID VALVE POWER PACKS



The Flowfit 12VDC Double Acting Double CETOP power pack is ideal for use in the following applications:

- Tail Lift/Extender
- Hoists/Winches
- Trailer/Tipper
- Compactors
- Hand operated lift stacker
- Parking Systems/Barriers
- Scissor Lift Platform
- Security Gates
- Aerial Platform
- Dock Leveler

www.flowfitonline.com
TECH. DATA SHEET
PPU3

The Flowfit 12VDC Double Acting Double CETOP power pack is a compact and quiet unit, able to deliver a flow rate of up to 5 litres a minute at 160 bar. The compact design includes two CETOP 3 double acting solenoid valves operating two separate circuits, a relief valve and a flow controller mounted within the housing and comes complete with a detachable pre-wired 4 button pendant and 4.5 litre plastic tank as standard.

Options available include an 8.0 litre plastic tank for increased capacity on larger systems.

The Flowfit 12VDC Double Acting power pack will require a high capacity battery and a suitable in-line fuse for normal operation.

The motor is designed for intermittent use (S3) which is defined as a sequence of identical cycles of 10 minute duration. The cycle comprises a period of on-load (td) operation in which the motor may reach its maximum permitted temperature, followed by an off-load period (tm) of time, insufficient for the motor to return to ambient temperature. The value of S3 on this motor equates to 7% or 42 seconds of on-load operation in a ten minute period.



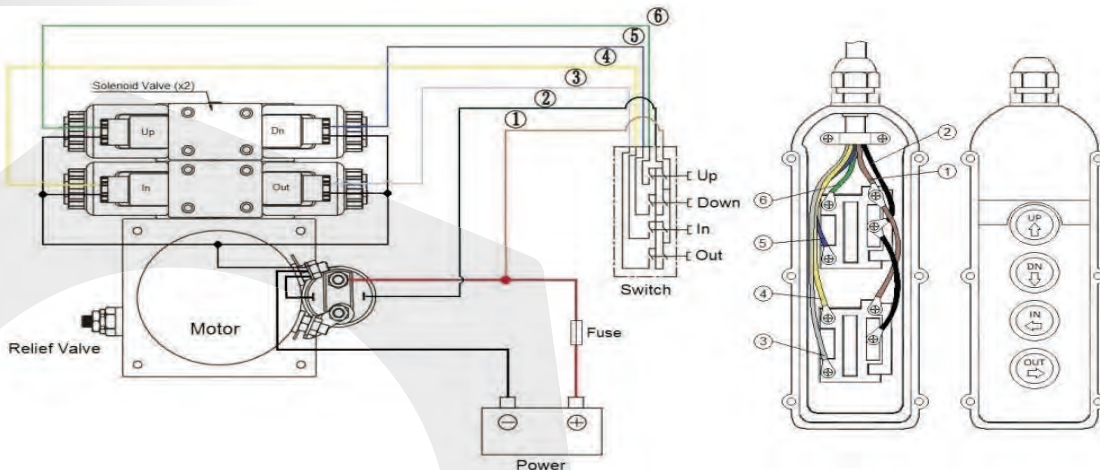
Flowfit 12VDC Double Acting, Double NG6 Solenoid Valve Hydraulic Powerunit

POWERUNIT PACKAGE to operate two double acting cylinders independantly on a variety of applications, complete with four button pendant.

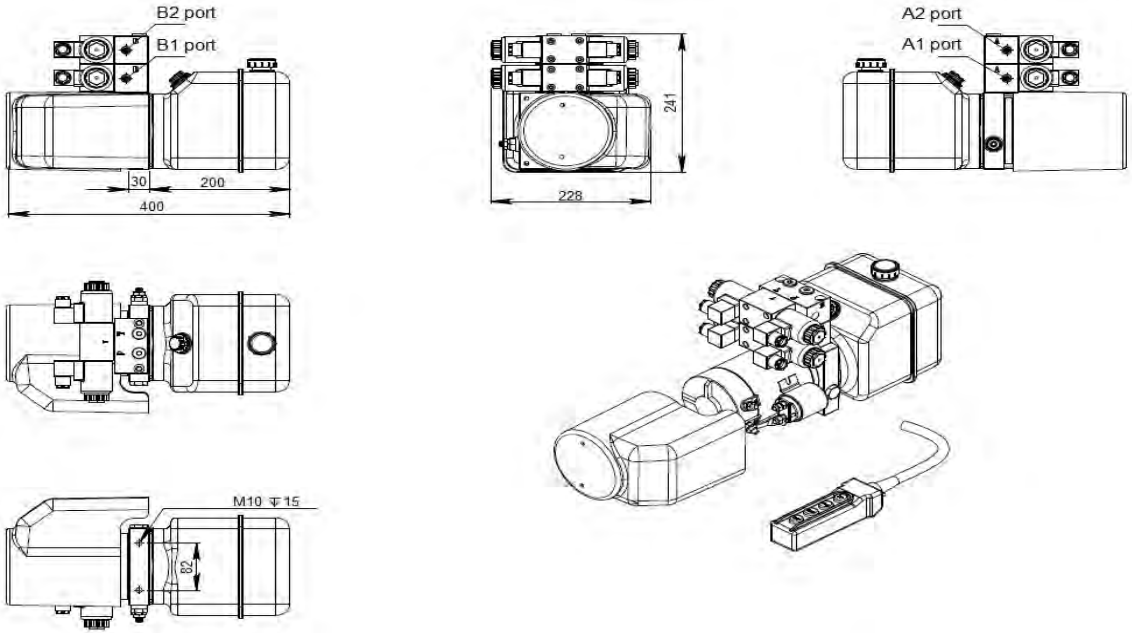
- 12VDC powerunit.
- 2.1cc/rev gear pump.
- 1.6kw 12VDC electric motor c/w relay and plastic motor cover.
- 4.5 Litre or 8.0 Litre reservoir c/w drain plug.
- Powerpack complete with suction strainer, return oil conveyor and filler breather.
- Horizontal mounting.
- Max pressure 200 bar.
- Relief valve set at 160 bar but adjustable from 40-200 bar as standard.
- Max flow 5 l/min.
- Relief valve and P line check.
- Port size 3/8" BSP.
- 4 Button pendant on a 4 metre lead.
- Suitable for all double acting applications.

WITH MANY ADDED FEATURES SUCH AS REMOVEABLE PLASTIC MOTOR COVER AND A VARIATION ON WHICH RELIEF VALVE SPRING IS FITTED YOU ARE GETTING AN EXCEPTIONALLY GOOD QUALITY PRODUCT AT A VERY COMPETITIVE PRICE

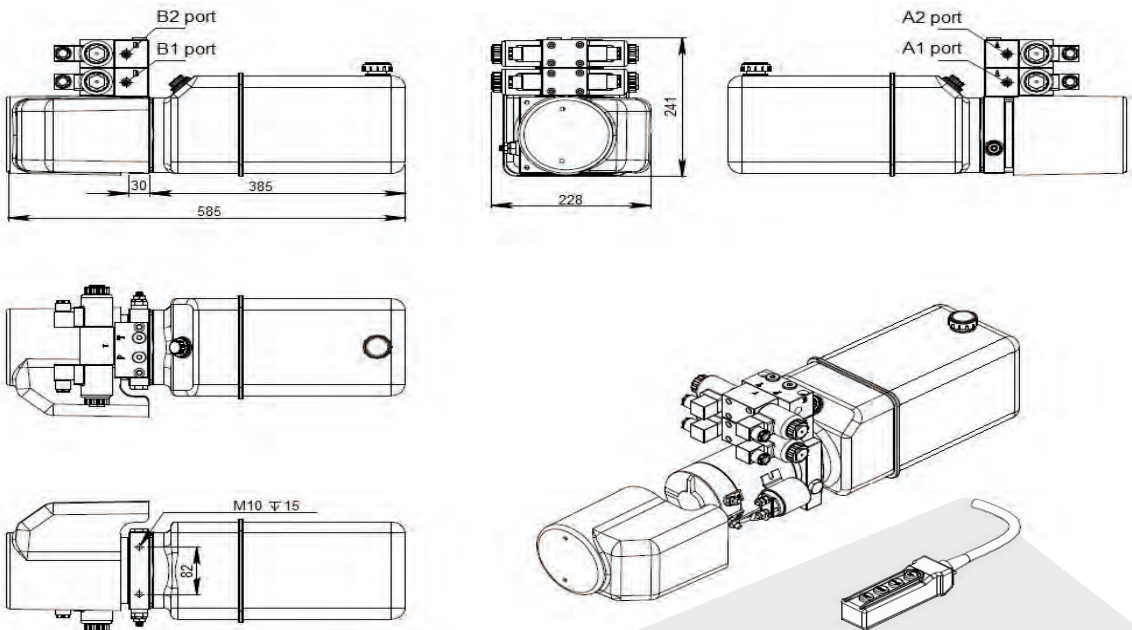
DOUBLE ACTING, DOUBLE NG6 SOLENOID VALVE WIRING DIAGRAM



4.5 LITRE POWER PACK DIMENSIONS



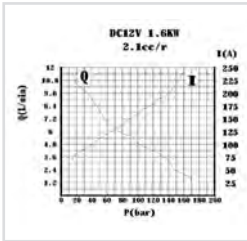
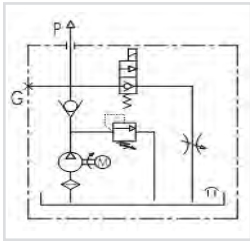
8.0 LITRE POWER PACK DIMENSIONS



PRODUCT REFERENCE	DESCRIPTION	NETT. PRICE	
		£ STERLING	€ EUROS
ZZ004234	Flowfit 12VDC double acting, double solenoid hydraulic powerpack, 4.5 litre reservoir c/w 4 button pendant. 5 l/min @ 160bar.	£282.09	€ 380.82
ZZ004233	Flowfit 12VDC double acting, double solenoid hydraulic powerpack, 8.0 litre reservoir c/w 4 button pendant. 5 l/min @ 160bar.	£239.80	€ 323.73

FLOWFIT 24VDC SINGLE ACTING HYDRAULIC POWER PACKS

www.flowfitonline.com
TECH. DATA SHEET
PPU4



The Flowfit 24VDC Single Acting power pack is ideal for use in the following applications:

- Tail Lift
- Trailer/Tipper
- Hand operated lift stacker
- Scissor Lift Platform
- Aerial Platform

The Flowfit 12VDC Single Acting power pack is a compact and quiet unit, able to deliver a flow rate of up to 5 litres a minute at 160 bar. The compact design includes a lowering solenoid valve, relief valve and flow controller mounted within the housing and comes complete with a detachable pre-wired 2 button pendant and 4.5 litre plastic tank as standard.

Options available include an 8.0 litre plastic tank for increased capacity on larger systems and a wireless remote, operated by key fob.

The Flowfit 24VDC Single Acting power pack will require a high capacity battery and a suitable in-line fuse for normal operation.

The motor is designed for intermittent use (S3) which is defined as a sequence of identical cycles of 10 minute duration. The cycle comprises a period of on-load (td) operation in which the motor may reach its maximum permitted temperature, followed by an off-load period (tm) of time, insufficient for the motor to return to ambient temperature.

The value of S3 on this motor equates to 7% or 42 seconds of on-load operation in a ten minute period.

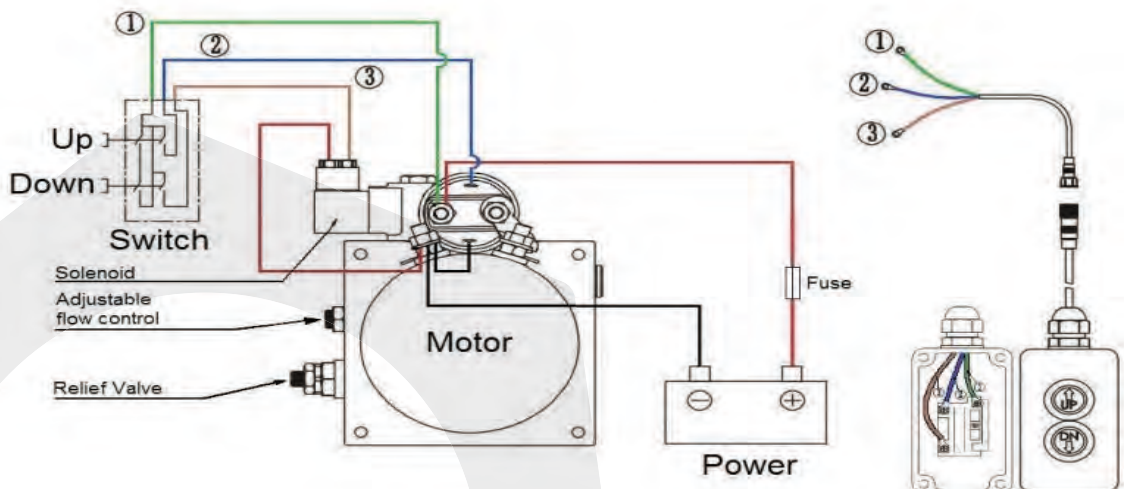
Flowfit 24VDC Single Acting Tipper Hydraulic Powerunit

POWERUNIT PACKAGE to operate a single acting cylinder on any trailer or tipper application, or any single acting application complete with detachable two button pendant.

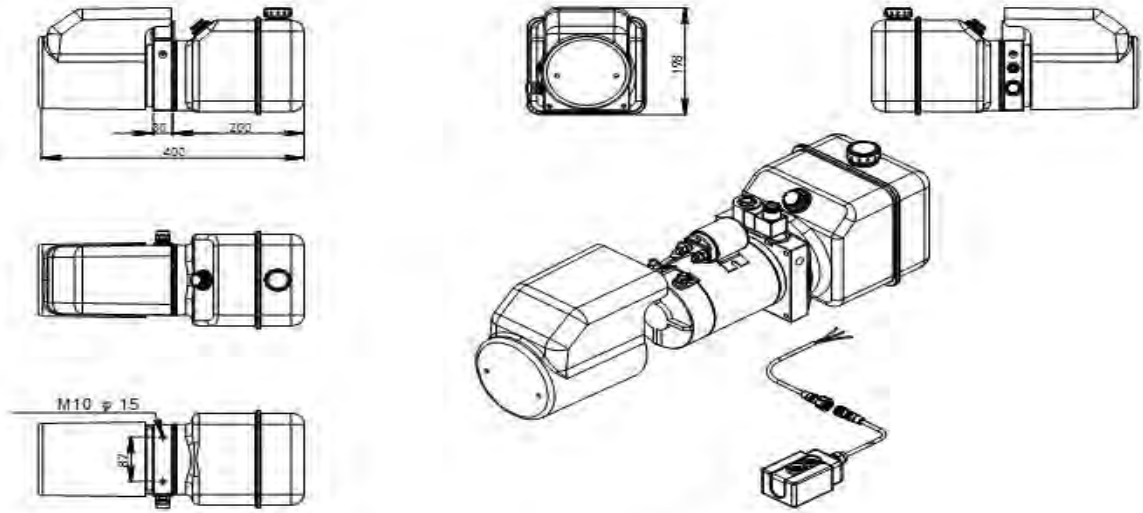
- 24VDC powerunit.
- 2.1cc/rev gear pump.
- 1.6kw 24VDC electric motor c/w relay and plastic motor cover.
- 4.5 Litre or 8.0 Litre reservoir c/w drain plug.
- Powerpack complete with suction strainer, return oil conveyor and filler breather.
- Horizontal mounting.
- Max pressure 200 bar.
- Relief valve set at 160 bar but adjustable from 40-200 bar as standard.
- Max flow 5 l/min.
- Adjustable flow control for cylinder decent control.
- 24VDC let down valve, relief and P line check.
- Port size 3/8" BSP.
- 2 Button detachable pendant on a 4 metre lead.
- Suitable for all single acting applications.

WITH MANY ADDED FEATURES SUCH AS FLOW CONTROL ON CYLINDER DECENT, DETACHABLE PENDANTS FOR ADDED SECURITY, REMOVABLE PLASTIC MOTOR COVER AND A VARIATION ON WHICH RELIEF VALVE SPRING IS FITTED YOUR ARE GETTING AN EXCEPTIONALLY GOOD QUALITY PRODUCT AT A VERY COMPETITIVE PRICE.

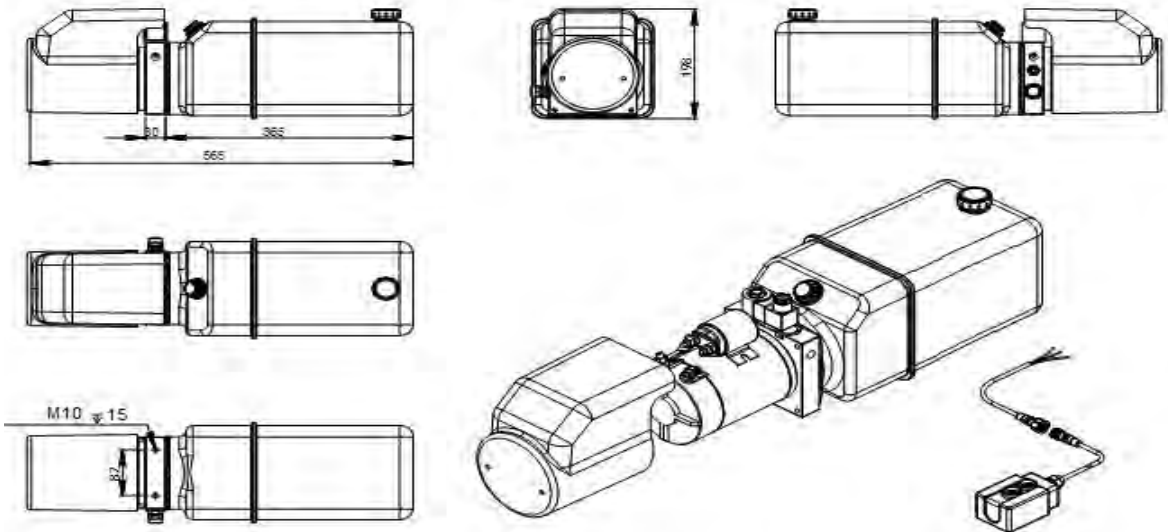
SINGLE ACTING WIRING DIAGRAM



4.5 LITRE POWER PACK DIMENSIONS



8.0 LITRE POWER PACK DIMENSIONS



PRODUCT REFERENCE	DESCRIPTION	NETT. PRICE	
		£ STERLING	€ EUROS
ZZ003820	Flowfit 24VDC single acting hydraulic powerpack, 4.5 litre reservoir c/w 2 button pendant. 5 l/min @ 160bar.	£141.70	€ 191.29
ZZ003835	Flowfit 24VDC single acting hydraulic powerpack, 8.0 litre reservoir c/w 2 button pendant. 5 l/min @ 160bar.	£176.70	€ 238.54

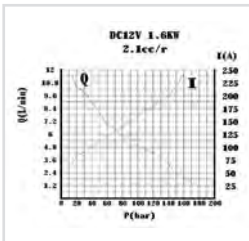
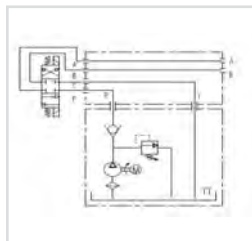
FLOWFIT 24VDC DOUBLE ACTING, NG6 (CETOP 3) SOLENOID VALVE POWER PACKS

www.flowfitonline.com
TECH. DATA SHEET
PPU5



The Flowfit 24VDC Double Acting power pack is ideal for use in the following applications:

- Tail Lift
- Hoists/Winches
- Trailer/Tipper
- Compactors
- Hand operated lift stacker
- Parking Systems/Barriers
- Scissor Lift Platform
- Security Gates
- Aerial Platform
- Dock Leveler



The Flowfit 24VDC Double Acting power pack is a compact and quiet unit, able to deliver a flow rate of up to 5 litres a minute at 160 bar. The compact design includes a CETOP 3 double acting solenoid valve, relief valve and flow controller mounted within the housing and comes complete with a detachable pre-wired 2 button pendant and 4.5 litre plastic tank as standard.

Options available include an 8.0 litre plastic tank for increased capacity on larger systems.

The Flowfit 24VDC Double Acting power pack will require a high capacity battery and a suitable in-line fuse for normal operation.

The motor is designed for intermittent use (S3) which is defined as a sequence of identical cycles of 10 minute duration. The cycle comprises a period of on-load (td) operation in which the motor may reach its maximum permitted temperature, followed by an off-load period (tm) of time, insufficient for the motor to return to ambient temperature. The value of S3 on this motor equates to 7% or 42 seconds of on-load operation in a ten minute period.



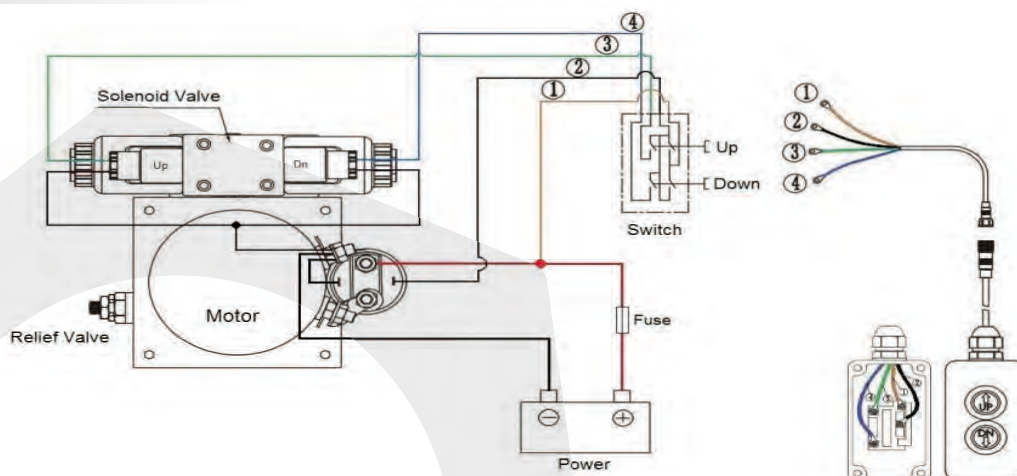
Flowfit 24VDC Double Acting NG6 Solenoid Valve Hydraulic Powerunit

POWERUNIT PACKAGE to operate a double acting cylinder on a variety of applications, complete with detachable two button pendant.

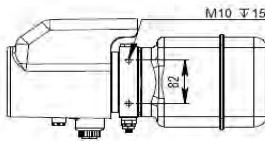
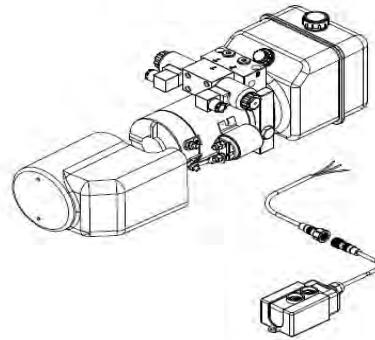
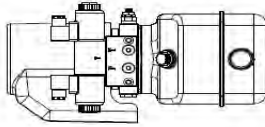
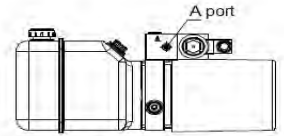
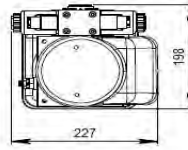
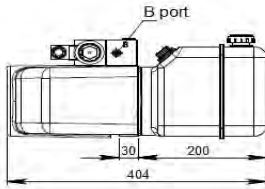
- 24VDC powerunit.
- 2.1cc/rev gear pump.
- 1.6kw 24VDC electric motor c/w relay and plastic motor cover.
- 4.5 Litre or 8.0 Litre reservoir c/w drain plug.
- Powerpack complete with suction strainer, return oil conveyor and filler breather.
- Horizontal mounting.
- Max pressure 200 bar.
- Relief valve set at 160 bar but adjustable from 40-200 bar as standard.
- Max flow 5 l/min.
- Relief valve and P line check.
- Port size 3/8" BSP.
- 2 Button detachable pendant on a 4 metre lead.
- Suitable for all double acting applications.

WITH MANY ADDED FEATURES SUCH AS DETACHABLE PENDANTS FOR ADDED SECURITY, REMOVEABLE PLASTIC MOTOR COVER AND A VARIATION ON WHICH RELIEF VALVE SPRING IS FITTED YOUR ARE GETTING AN EXCEPTIONALLY GOOD QUALITY PRODUCT AT A VERY COMPETITIVE PRICE.

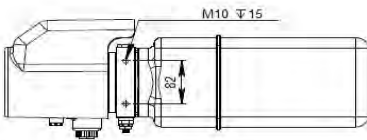
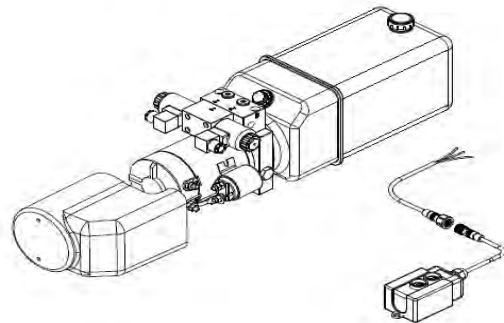
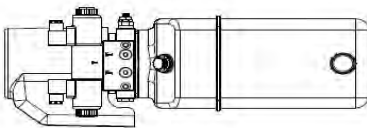
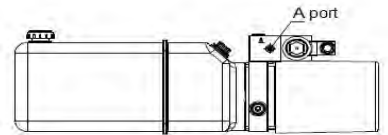
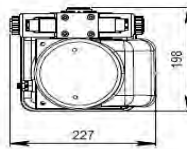
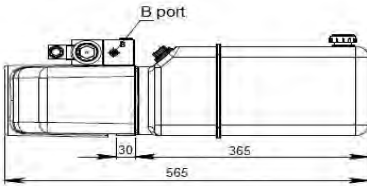
DOUBLE ACTING, NG6 SOLENOID VALVE WIRING DIAGRAM



4.5 LITRE POWER PACK DIMENSIONS



8.0 LITRE POWER PACK DIMENSIONS



PRODUCT REFERENCE	DESCRIPTION	NETT. PRICE	
		£ STERLING	€ EUROS
ZZ004236	Flowfit 24VDC double acting, single solenoid hydraulic powerpack, 4.5 litre reservoir c/w 2 button pendant. 5 l/min @ 160bar.	£227.19	€ 306.71
ZZ004237	Flowfit 24VDC double acting, single solenoid hydraulic powerpack, 8.0 litre reservoir c/w 2 button pendant. 5 l/min @ 160bar.	£239.81	€ 323.75

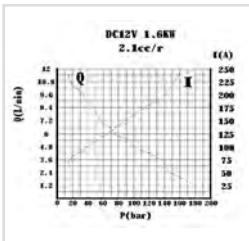
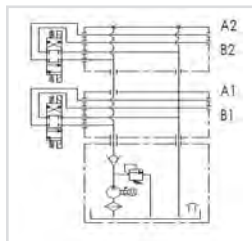
FLOWFIT 24VDC DOUBLE ACTING, DOUBLE NG6 (CETOP 3) SOLENOID VALVE POWER PACKS

www.flowfitonline.com
TECH. DATA SHEET
PPU6



The Flowfit 24VDC Double Acting Double CETOP power pack is ideal for use in the following applications:

- Tail Lift/Extender
- Hoists/Winches
- Trailer/Tipper
- Compactors
- Hand operated lift stacker
- Parking Systems/Barriers
- Scissor Lift Platform
- Security Gates
- Aerial Platform
- Dock Leveler



The Flowfit 12VDC Double Acting Double CETOP power pack is a compact and quiet unit, able to deliver a flow rate of up to 5 litres a minute at 160 bar. The compact design includes two CETOP 3 double acting solenoid valves operating two separate circuits, a relief valve and a flow controller mounted within the housing and comes complete with a detachable pre-wired 4 button pendant and 4.5 litre plastic tank as standard.

Options available include an 8.0 litre plastic tank for increased capacity on larger systems.

The Flowfit 12VDC Double Acting power pack will require a high capacity battery and a suitable in-line fuse for normal operation.

The motor is designed for intermittent use (S3) which is defined as a sequence of identical cycles of 10 minute duration. The cycle comprises a period of on-load (td) operation in which the motor may reach its maximum permitted temperature, followed by an off-load period (tm) of time, insufficient for the motor to return to ambient temperature. The value of S3 on this motor equates to 7% or 42 seconds of on-load operation in a ten minute period.

Flowfit 24VDC Double Acting, Double NG6 Solenoid Valve Hydraulic Powerunit

POWERUNIT PACKAGE to operate two double acting cylinders independantly on a variety of applications, complete with four button pendant.

24VDC powerunit.

2.1cc/rev gear pump.

1.6kw 24VDC electric motor c/w relay and plastic motor cover.

4.5 Litre or 8.0 Litre reservoir c/w drain plug.

Powerpack complete with suction strainer, return oil conveyor and filler breather.

Horizontal mounting.

Max pressure 200 bar.

Relief valve set at 160 bar but adjustable from 40-200 bar as standard.

Max flow 5 l/min.

Relief valve and P line check.

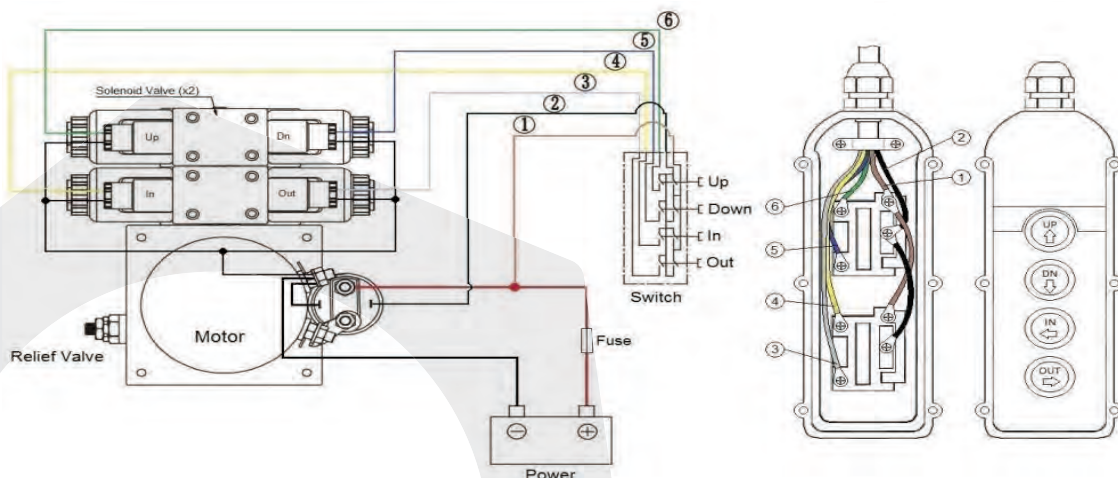
Port size 3/8" BSP.

4 Button pendant on a 4 metre lead.

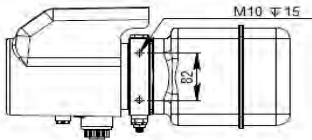
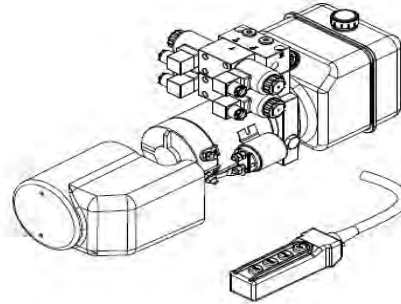
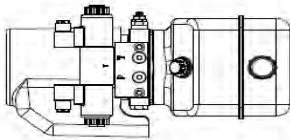
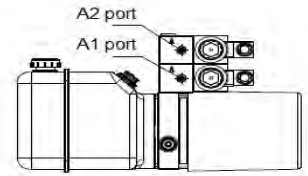
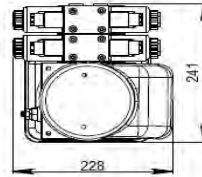
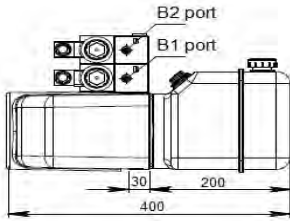
Suitable for all double acting applications.

WITH MANY ADDED FEATURES SUCH AS REMOVEABLE PLASTIC MOTOR COVER AND A VARIATION ON WHICH RELIEF VALVE SPRING IS FITTED YOUR ARE GETTING AN EXCEPTIONALLY GOOD QUALITY PRODUCT AT A VERY COMPETITIVE PRICE

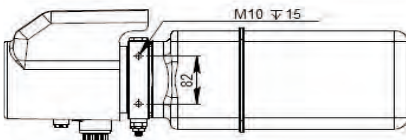
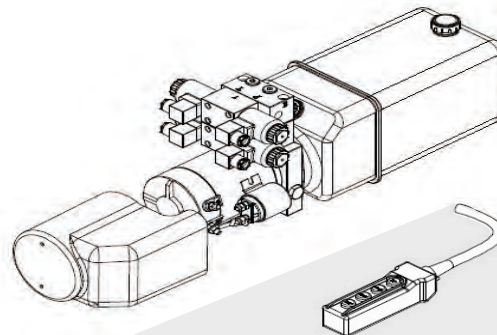
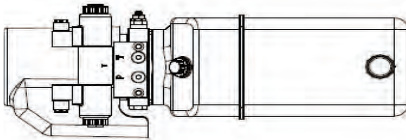
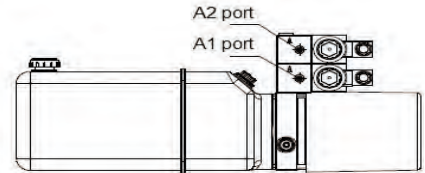
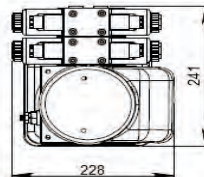
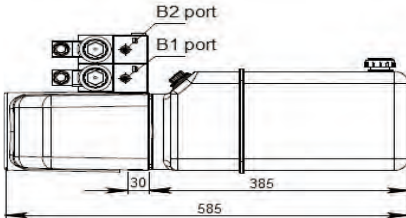
DOUBLE ACTING, DOUBLE NG6 SOLENOID VALVE WIRING DIAGRAM



4.5 LITRE POWER PACK DIMENSIONS



8.0 LITRE POWER PACK DIMENSIONS



PRODUCT REFERENCE	DESCRIPTION	NETT. PRICE	
		£ STERLING	€ EUROS
ZZ004238	Flowfit 24VDC double acting, double solenoid hydraulic powerpack, 4.5 litre reservoir c/w 4 button pendant. 5 l/min @ 160bar.	£282.10	€ 380.83
ZZ004239	Flowfit 24VDC double acting, double solenoid hydraulic powerpack, 8.0 litre reservoir c/w 4 button pendant. 5 l/min @ 160bar.	£294.71	€ 397.86

ACCESSORIES

MOTOR (WITH RELAY)

www.flowfitonline.com
TECH. DATA SHEET
PPPU7



24VDC MOTOR (WITH RELAY)

Voltage: 24VDC
Power: 1.6kW
Relay: 24V 200A
Speed: 3500RPM
Duty: S3=7% (Intermittent Duty)
Dimensions: Ø 114mm, Length 170mm
Drive: Splined

S3 Intermittent duty is defined as a sequence of identical cycles of 10 minute duration. The cycle comprises a period of on-load (td) operation in which the motor may reach its maximum permitted temperature, followed by an off-load period (tm) of time, insufficient for the motor to return to ambient temperature.

The value of S3 on this motor equals 7% or 42 seconds of on-load operation in a ten minute period.

12VDC MOTOR (WITH RELAY)

Voltage: 12VDC
Power: 1.6kW
Relay: 12V 200A
Speed: 3500RPM
Duty: S3=7% (Intermittent Duty)
Dimensions: Ø 114mm, Length 170mm
Drive: Splined

PRODUCT REFERENCE	DESCRIPTION	NETT. PRICE	
		£ STERLING	€ EUROS
24VDCMOTOR	24VDC MOTOR 1.6KW C/W RELAY	£83.84	€ 113.18
12VDCMOTOR	12VDC MOTOR 1.6KW C/W RELAY	£83.84	€ 113.18

COIL FOR LET DOWN VALVE

www.flowfitonline.com
TECH. DATA SHEET
PPPU7



24VDC COIL FOR LET DOWN VALVE

24VDC coil with Herschmann connector, for use on the lowering valve of Single Acting 24VDC power packs (ZZ003820 and ZZ003835).

12VDC COIL FOR LET DOWN VALVE

12VDC coil with Herschmann connector, for use on the lowering valve of Single Acting 12VDC power packs (ZZ003468 and ZZ003834).

PRODUCT REFERENCE	DESCRIPTION	NETT. PRICE	
		£ STERLING	€ EUROS
24VLOWCOIL	24VDC COILS TO SUIT ZZ003820 & ZZ003835 USED ON LET DOWN VALVE	£9.06	€ 12.24
12VLOWCOIL	12VDC COILS TO SUIT ZZ003468 & ZZ003834 USED ON LET DOWN VALVE	£9.06	€ 12.24

JC00-01 DOUBLE ACTING HOUSING

www.flowfitonline.com
TECH. DATA SHEET
PPPU7



Double Acting Housing machined from solid aluminium block. Comes with 1/4" BSP threaded P and T ports to use as basic P and T unit. Machined ports for Relief Valve, Check Valve, and Flow Control Valve.

Requires separate manifold for Double Acting operation.

Mounting face machined to enable DC motor to be positioned at 90° intervals.

PRODUCT REFERENCE	DESCRIPTION	NETT. PRICE	
		£ STERLING	€ EUROS
DAHOUSING	JC00-01 DOUBLE ACTING HOUSING	£45.45	€ 61.35

CETOP 3 NG6 1 STATION MANIFOLD

www.flowfitonline.com
TECH. DATA SHEET
PPU7



CETOP 3 (NG6) 1 station manifold machined from solid aluminium block. P, T, A and B ports come with 1/4" BSP thread.

Two manifolds can be stacked together creating a Double Acting, Double Cetop 3 power pack.

Mounting bolts:

M8 x 50mm Cap Head (single manifold)

M8 x 100mm Cap Head (double manifold)

PRODUCT REFERENCE	DESCRIPTION	NETT. PRICE	
		£ STERLING	€ EUROS
CETOP31STATION	CETOP 3, 1 STATION MANIFOLD TO SUIT JC00-01 HOUSING	£15.15	€ 20.46

PLASTIC 8.0 LITRE TANK

www.flowfitonline.com
TECH. DATA SHEET
PPU7



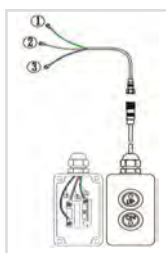
8.0 Litre horizontal plastic tank for increased capacity of larger hydraulic systems.

Comes with Filler Breather (with Dip Stick), blank plug and Jubilee Clip.

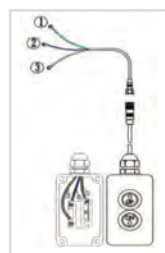
PRODUCT REFERENCE	DESCRIPTION	NETT. PRICE	
		£ STERLING	€ EUROS
PLASTANK8L	PLASTIC TANK 8.0L C/W RED PLUG AND BREATHER	£9.00	€ 12.15

2 BUTTON SINGLE ACTING 3 WIRE PENDANT

www.flowfitonline.com
TECH. DATA SHEET
PPU7



2 button Single Acting pendant comes pre-wired for powered lift and gravity lowered applications. Comes with 4 metres of detachable 3 wire cable for added security. Also available for Single Acting power packs with remote option.

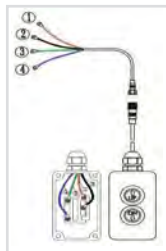


Wiring diagram for Single Acting power pack with remote option.

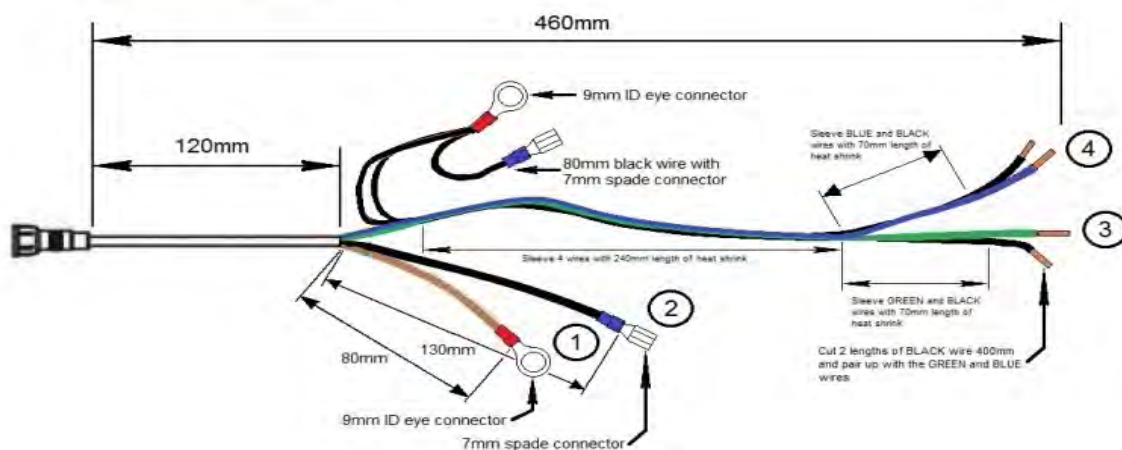
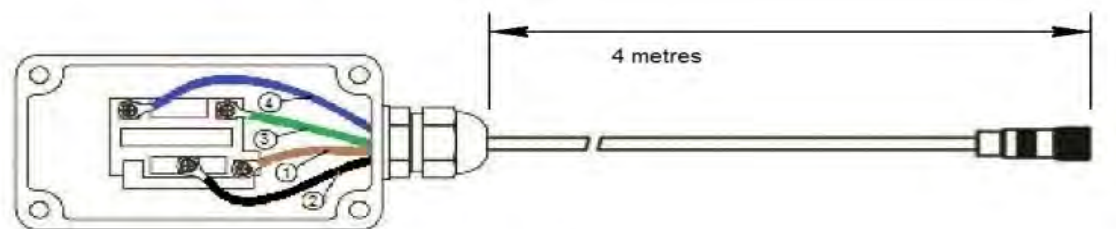
PRODUCT REFERENCE	DESCRIPTION	NETT. PRICE	
		£ STERLING	€ EUROS
PENDSA	3 WIRE SINGLE ACTING PENDANT WITH 4 METRE CABLE DETACHABLE	£17.67	€ 23.86

2 BUTTON DOUBLE ACTING 4 WIRE PENDANT

www.flowfitonline.com
TECH. DATA SHEET
PPU8



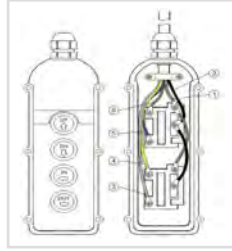
2 button Double Acting pendant comes pre-wired for powered operation in both directions through a CETOP 3 (NG6) solenoid valve.
Comes with 4 metres of detachable 4 wire cable for added security.



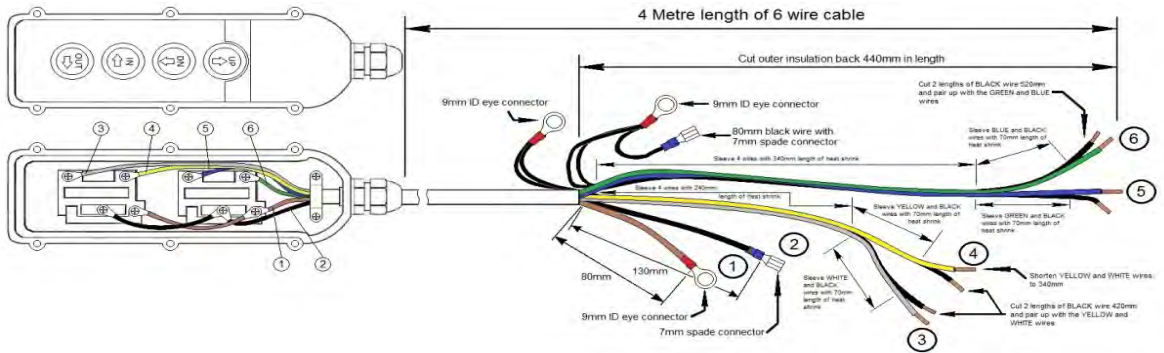
PRODUCT REFERENCE	DESCRIPTION	NETT. PRICE	
		£ STERLING	€ EUROS
PENDDA	4 WIRE DOUBLE ACTING PENDANT WITH 4 METRE CABLE DETACHABLE	£23.98	€ 32.37

4 BUTTON DOUBLE ACTING 6 WIRE PENDANT

www.flowfitonline.com
TECH. DATA SHEET
PPU8



4 button Double Acting pendant comes pre wired to operate two separate hydraulic circuits through two CETOP 3 (NG6) solenoid valves.
Comes with 4 metres of 6 wire cable for hard wiring into a power pack.



PRODUCT REFERENCE	DESCRIPTION	NETT. PRICE	
		£ STERLING	€ EUROS
PENDDADA	6 WIRE DOUBLE ACTING PENDANT WITH 4 METRE CABLE DETACHABLE	£31.56	€ 42.61

PRODUCT REFERENCE	DESCRIPTION	NETT. PRICE	
		£ STERLING	€ EUROS
LABEL: YELLOW WARNING	YELLOW WARNING LABEL TO SUIT SINGLE ACTING POWERPACKS	£1.14	€ 1.54
LABELS: ZZ003468	FLOWFIT LABEL TO SUIT ZZ003468	£1.14	€ 1.54
LABELS: ZZ003820	FLOWFIT LABEL TO SUIT ZZ003820	£1.14	€ 1.54
LABELS: ZZ003834	FLOWFIT LABEL TO SUIT ZZ003834	£1.14	€ 1.54
LABELS: ZZ003835	FLOWFIT LABEL TO SUIT ZZ003835	£1.14	€ 1.54

FLOWFIT MOBILE ENGINE DRIVEN HYDRAULIC POWER UNITS ON WHEELS

FLOWFIT MOBILE ENGINE DRIVEN HYDRAULIC POWER UNITS

www.flowfitonline.com
TECH. DATA SHEET
PPU9



The Flowfit Range of Petrol Engine Driven Hydraulic Power Units on wheels is based on the Honda GX160 5.5 HP, Honda GX270 9.5 HP and the Honda GX390 13 HP range of engines we do have larger Honda sizes up to 25HP GX630 upon request.

Commercial Self Contained Portable Hydraulic Power Units are designed for heavy duty farm, marine and other commercial applications. Our HPU's replace farm tractor, truck and other hydraulic power supplies. Use with grain augers, mixers, lifts and other hydraulic applications with pressure available up to 200 bar (2900 psi). We offer a variety of petrol engines from the Honda GX Series and for those on a budget, Loncin engines are available. Alternatively, Hatz, Changfa or Lombardini commercial diesel engines can be specified, along with electric start/stop on all engine ranges upon request. Please contact our technical support staff to discuss all of your specific requirements.

SPECIFICATION

- Max Pressure: 200 bar (2900 psi).
- Relief valve Mounted on the front of the Gear Pump (pre-set to 150 bar).
- Gear Pump flows available up to 25.5 l/min.
- Flowfit Pressure Gauge fitted 0-280 bar (0-4000psi).
- Hydraulic Tank/Reservoir Capacity 50 Litres.
- Rugged Construction.
- Collapsible handle assembly for ease of transportation.
- Suction strainer fitted 125 micron, max flow 30 l/min accessible via bolt down hatch on top of tank.
- Return line filter tank mounted 10 micron cellulose filter element, c/w visual clogging indicator and diffuser and max pressure 8 bar / 116 psi.
- Max flow to return through the return line filter 45 l/min. Can be upgraded to 65 l/min returnable flow with 125 micron filter element fitted. We recommend regular checking of visual indicator to ensure filter element does not need changing.
- Replacement return line filter element is available. We recommend this is changed after the first 20 hours of use to ensure maximum efficiency and cleanliness of the hydraulic powerunit.
- Filling Point - Via a visual level indicator c/w with float system. Filler is removable and allows a constant indication of the hydraulic oil level inside the tank.
- Max Temperature of Oil 80°C.
- Flat face quick release couplings 2 off complete fitted on pump outlet and tank top return filter ready to connect your 1/2" bsp male hose connection or male adaptor.
- Power Unit fitted with top quality Gates hydraulic hose assemblies Pneumatic tyre wheels Kit included for ease of transportation.
- Full 1 Year Warranty (2 year warranty standard on Honda engines) Made in England.

ENGINE
CHOICE OF HONDA AND LONCIN PETROL OR HATZ ENGINES

PRESSURE GAUGE
0-280 BAR (0-4000 PSI)
GAUGE FITTED AS STANDARD.
MAXIMUM SYSTEM PRESURE =200 BAR

HOSE
TOP QUALITY GATES FLEXIBLE HOSE USED THROUGHOUT

DAMPERS
40mm DAMPERS FITTED AS STANDARD TO REDUCE ENGINE VIBRATION AND NOISE LEVELS

RETURN FILTER
10 MICRON TANK RETURN FILTER FITTED WITH VISUAL INDICATOR AND BYPASS VALVE TO ENSURE CLEANLINESS OF THE HYDRAULIC OIL AND EXTENDING OPERATING LIFE.

QUICK RELEASE CONNECTIONS
1/2" BSP DN08 FLAT FACE QUICK RELEASE COUPLINGS
FITTED AS STANDARD FOR EASE OF STORAGE & TRANSPORTATION

TANK
50 LITRE TANK MANUFACTURED FROM 4mm SHEET STEEL FOR STURDY CONSTRUCTION, ENABLING OTHER COMPONENTS TO BE MOUNED DIRECTLY ON TO IT. THIS DESIGN PROVIDES A LOW CENTRE OF GRAVITY FOR ADDED STABILITY ON ROUGH TERRAIN.

FILLING POINT AND LEVEL READING
VISUAL LEVEL INDICATOR FITTED TO FILLER PORT. OPERATES USING A FLOAT AND ARCHIMEDES SCREW.

LEVEL INDICATOR
SECONDARY LEVEL INDICATOR MOUNTED AT THE END OF TANK FOR ADDED PROTECTION

ENGINE

ALL ENGINES COME WITH RECOIL START AS STANDARD. ELECTRIC START CAN BE SPECIFIED ON REQUEST. YOUR BATTERY MOUNTING REQUIREMENTS CAN BE DISCUSSED WITH OUR SALES TEAM.

HOSE

TOP QUALITY GATES FLEXIBLE HOSE USED THROUGHOUT

SUCTION STRAINER

125 MICRON SUCTION STRAINER FITTED AS STANDARD TO ASSIST IN KEEPING THE HYDRAULIC SYSTEM CLEAN. REDUCING WEAR AND MAINTENANCE COSTS.

RETURN FILTER AND MANIFOLD

RETURN FILTER FITTED WITH 10 MICRON FIBREGLASS ELEMENT AND FILTER GAUGE TO INDICATE WHEN REPLACEMENT IS DUE. MOUNTED DIRECTLY ONTO THE ACCESS MANIFOLD FOR EASE OF MAINTENANCE. MANIFOLD ALLOWS ACCESS TO THE INTERIOR OF THE TANK.

HANDLE ASSEMBLY

FOLDING HANDLE FOR COMPACT STORAGE

GEAR PUMP

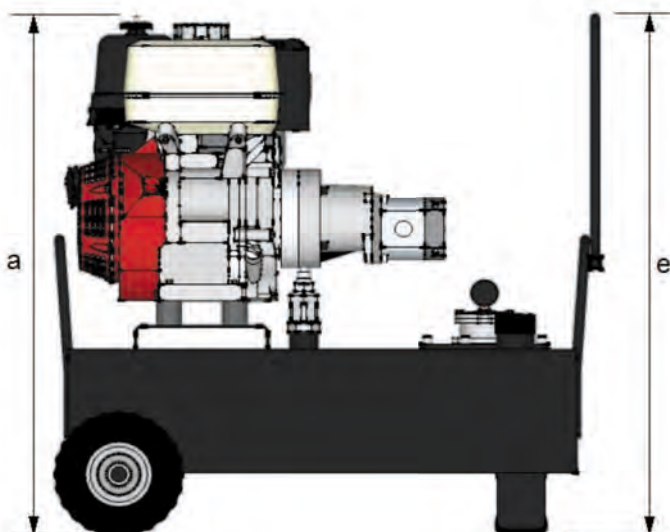
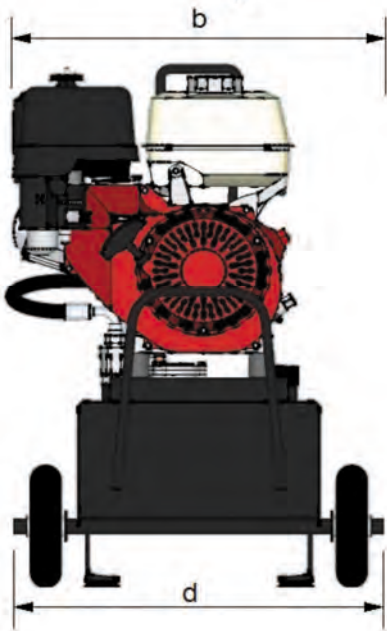
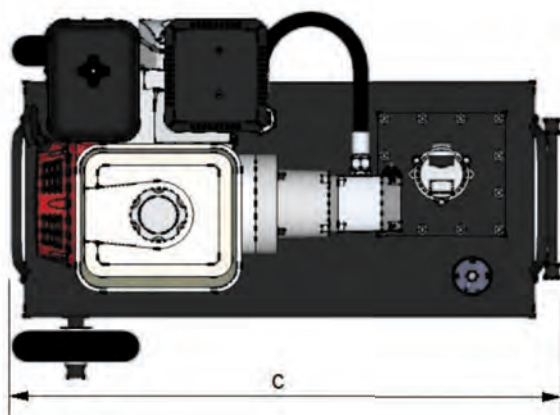
PUMP MOUNTED RELIEF VALVE. REDUCING THE NEED FOR COMPLEX PIPEWORK

FLOWFIT HONDA PETROL POWER UNIT (RECOIL START)

PRODUCT REFERENCE	DESCRIPTION	NETT. PRICE	
		£ STERLING	€ EUROS
ZZ003799	GX390FQ 13HP HONDA PETROL ENGINE PORTABLE UNIT 25.5L/MIN 210BAR RECOIL START	£1,935.44	€ 2,612.83
ZZ003801	GX270FQ 9.5HP HONDA PETROL ENGINE PORTABLE UNIT 19.5L/MIN 200BAR RECOIL START	£1,727.03	€ 2,331.49
ZZ003802	GX160FQ 5.5HP HONDA PETROL ENGINE PORTABLE UNIT 10.5L/MIN 200BAR RECOIL START	£1,325.26	€ 1,789.10

FLOWFIT LONCIN PETROL POWER UNIT (RECOIL START)

PRODUCT REFERENCE	DESCRIPTION	NETT. PRICE	
		£ STERLING	€ EUROS
ZZ003800	G390F-P 13HP LONCIN PETROL ENGINE PORTABLE UNIT 25.5L/MIN 210BAR RECOIL START	£1,505.11	€ 2,031.90
ZZ003803	G270F-P 9HP LONCIN PETROL ENGINE PORTABLE UNIT 19.5L/MIN 200BAR RECOIL START	£1,313.90	€ 1,773.76
ZZ003804	G160F-P 5.5HP LONCIN PETROL ENGINE PORTABLE UNIT 10.5L/MIN 200BAR RECOIL START	£1,108.13	€ 1,495.98



PRODUCT REFERENCE	ENGINE	PUMP	FLOW RATE	PRESSURE		WEIGHT (DRY)	DIMENSIONS				
				BAR	PSI		A	B	C	D	E
ZZ003799	GX390FQ	8cc	25.5/min	210	3045	75kg	821mm	587mm	860mm	580mm	845mm
ZZ003801	GX270FQ	6.5cc	19.5/min	200	2900	69kg	788mm	563mm			
ZZ003802	GX160FQ	3.2cc	10.5/min	200	2900	60kg	713mm	529mm			
ZZ003800	G390F	8cc	25.5/min	210	3045	75kg	818mm	584mm			
ZZ003803	G270F	6.5cc	19.5/min	200	2900	69kg	788mm	570mm			
ZZ003804	G160F	3.2cc	10.5/min	200	2900	60kg	793mm	530mm			

HANDLE ASSEMBLY

FOLDING HANDLE FOR COMPACT STORAGE



PRESSURE GAUGE

0-280 BAR (0-4000 PSI)
GAUGE FITTED AS STANDARD.
MAXIMUM SYSTEM PRESURE =200 BAR

ENGINE

ALL ENGINES COME WITH RECOIL START AS STANDARD. ELECTRIC START CAN BE SPECIFIED ON REQUEST. YOUR BATTERY MOUNTING REQUIREMENTS CAN BE DISCUSSED WITH OUR SALES TEAM.


HOSE

TOP QUALITY GATES FLEXIBLE HOSE USED THROUGHOUT

LEVER VALVE WITH 3/8" 'A' & 'B' PORTS

THE HDM140 DOUBLE ACTING 3 POSITION SPOOL VALVE IS 3/8" BSP PORTED AND PROVIDE A MAXIMUM FLOW RATE OF 40 L/ MIN WITH SPRING RETURN TO NEUTRAL.

A RELIEF VALVE IS FITTED TO THE HDM140 AS STANDARD AND IS PRESET TO 150 BAR. DIFFERENT SPOOL AND POSITIONER CONFIGURATIONS CAN BE SPECIFIED UPON REQUEST.



SUCTION STRAINER

125 MICRON SUCTION STRAINER FITTED AS STANDARD TO ASSIST IN KEEPING THE HYDRAULIC SYSTEM CLEAN. REDUCING WEAR AND MAINTENANCE COSTS.



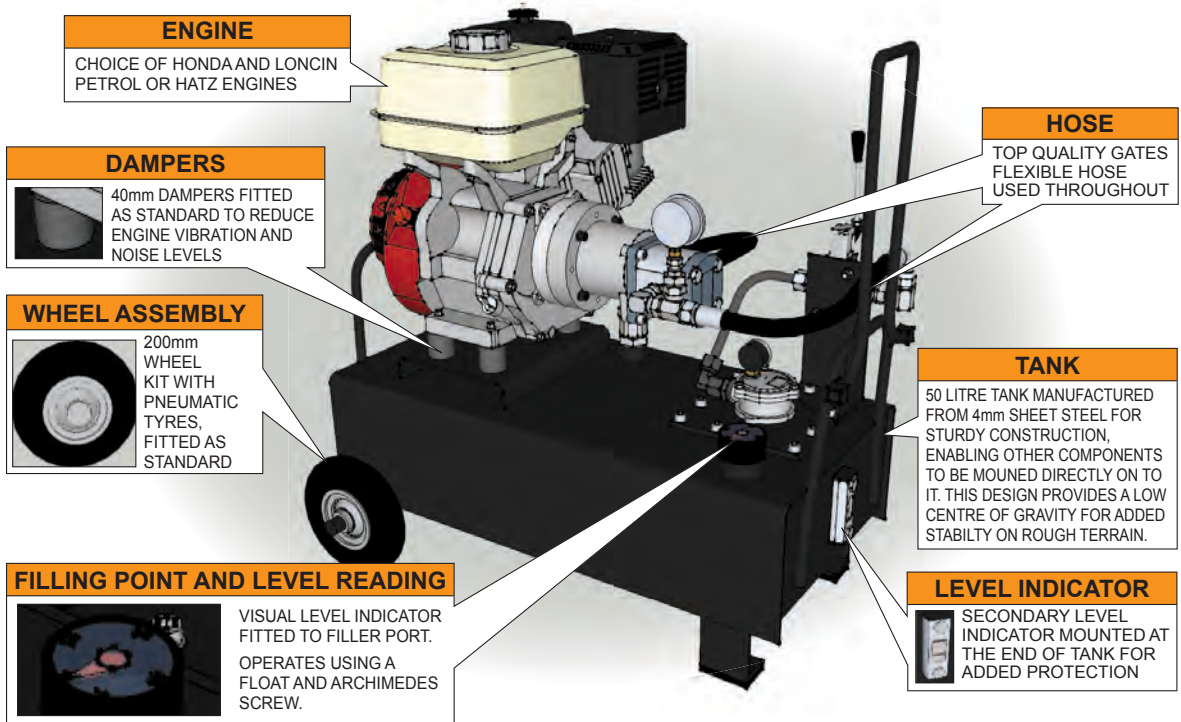
RETURN FILTER AND MANIFOLD

RETURN FILTER FITTED WITH 10 MICRON FIBREGLASS ELEMENT AND FILTER GAUGE TO INICATE WHEN REPLACEMENT IS DUE. MOUNTED DIRECTLY ONTO THE ACCESS MANIFOLD FOR EASE OF MAINTENANCE. MANIFOLD ALLOWS ACCESS TO THE INTERIOR OF THE TANK.



FLOWFIT HONDA PETROL POWER UNIT (RECOIL START) WITH LEVER VALVE

PRODUCT REFERENCE	DESCRIPTION	NETT. PRICE	
		£ STERLING	€ EUROS
ZZ004422	GX390FQ 13HP HONDA PETROL ENGINE PORTABLE UNIT 25.5L/MIN 210BAR RECOIL START (with lever valve)	£2,098.32	€ 2,832.73
ZZ004423	GX270FQ 9.5HP HONDA PETROL ENGINE PORTABLE UNIT 19.5L/MIN 200BAR RECOIL START (with lever valve)	£1,874.29	€ 2,530.29
ZZ004424	GX160FQ 5.5HP HONDA PETROL ENGINE PORTABLE UNIT 10.5L/MIN 200BAR RECOIL START (with lever valve)	£1,466.61	€ 1,979.92



FLOWFIT LONCIN PETROL POWER UNIT (RECOIL START) WITH LEVER VALVE

PRODUCT REFERENCE	DESCRIPTION	NETT. PRICE	
		£ STERLING	€ EUROS
ZZ004425	G390F-P 13HP LONCIN PETROL ENGINE PORTABLE UNIT 25.5L/MIN 210BAR RECOIL START (with lever valve)	£1,654.67	€ 2,233.81
ZZ004426	G270F-P 9HP LONCIN PETROL ENGINE PORTABLE UNIT 19.5L/MIN 200BAR RECOIL START (with lever valve)	£1,457.77	€ 1,968.00
ZZ004427	G160F-P 5.5HP LONCIN PETROL ENGINE PORTABLE UNIT 10.5L/MIN 200BAR RECOIL START (with lever valve)	£1,198.41	€ 1,617.85