

**HYDRAULIC MOTORS**

# M&S HYDRAULIC MOTORS

PRODUCT	PAGE
M+S HYDRAULIC MOTOR SERIES EPMM	214
M+S HYDRAULIC MOTOR SERIES EPM	215
M+S HYDRAULIC MOTOR SERIES EPRM	216
M+S HYDRAULIC MOTOR SERIES EPMS	218
M+S HYDRAULIC MOTOR SERIES EPMT	219
M+S HYDRAULIC MOTOR SERIES EPMV	220
ELB BRAKES	221
HKU & HKUS STEERING UNITS	221



**FROM ONLY  
£152.29  
+VAT**



**FROM ONLY  
£389.92  
+VAT**



**FROM ONLY  
£585.80  
+VAT**



**QUALITY PRODUCTS**

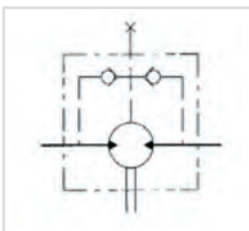


**FREE ADVICE**

**FOR SALES  
& ADVICE  
CALL US  
01584  
876033**

# M+S HYDRAULIC MOTOR SERIES EPMM

www.flowfitonline.com  
TECH. DATA SHEET  
**MSM01**



M+S Hydraulic motors are one of the top quality hydraulic motors available on the Worldwide market today.

Suitable for many low-speed applications, eliminating gears, shafts, chains, belts, pulleys and other speed reduction components. All motors are compact and light in weight in proportion to the torque and power delivered, all motors are fully reversible and fully interchangeable with all other brands on the market.

Use these Hydraulic Motors on machine tools, augers, drilling/tapping machines, conveyors, sweepers, fans etc. Compact size fits almost anywhere.

Interchangeable with danfoss OMM range of hydraulic motors.

2 YEARS MANUFACTURERS WARRANTY ON ALL M+S PRODUCTS

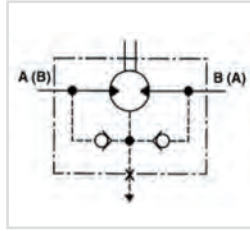
TYPE		EPMM	EPMM	EPMM	EPMM	EPMM	EPMM
		8	12.5	20	32	40	50
Displacement [cm <sup>3</sup> /REV]		8,2	12,9	20	31,8	40	50
Max. Speed [RPM]	Cont.	1950	1550	1000	630	500	400
	Int.(1)	2440	1940	1250	790	625	500
Max. Torque [daNm]	Cont.	1,1	1,6	2,5	4,0	4,1	4,5
	Int.(1)	1,5	2,3	3,5	5,7	5,7	5,8
	Peak (2)	2,1	3,3	5,1	6,4	6,6	8
Max. Output Power [kW]	Cont.	1,8	2,4	2,4	2,4	1,8	1,7
	Int.(1)	2,6	3,2	3,2	3,2	3,0	2,1
Max. Pressure Drop [bar]	Cont	105	105	105	105	82,5	70
	Int.(1)	140	140	140	140	110	90
	Peak (2)	200	200	200	200	140	125
Max.Oil flow [l/min]	Cont	16	20	20	20	20	20
	Int.(1)	20	25	25	25	25	25
Max. Input Pressure [bar]	Cont.	140	140	140	140	140	140
	Int.(1)	175	175	175	175	175	175
Weight [kg]		1.9	2	2.1	2.2	2.3	2.4

PART NUMBER	DESCRIPTION	NETT. PRICE	
		£ STERLING	€ EUROS
EPMM12,5C	Hydraulic motor EPMM12,5C, 12.9ccm/REV, shaft 16mm, G 3/8" BSP, rear ports	£144.36	€ 194.89
EPMM20C	Hydraulic motor EPMM20C, 19.9ccm/REV, shaft 16mm, G 3/8" BSP, rear ports	£146.76	€ 198.13
EPMM32C	Hydraulic motor EPMM32C, 31.8ccm/REV, shaft 16mm, G 3/8" BSP, rear ports	£149.27	€ 201.51
EPMM40C	Hydraulic motor EPMM40C, 40ccm/REV, shaft 16mm, G 3/8" BSP, rear ports	£159.44	€ 215.24
EPMM50C	Hydraulic motor EPMM50C, 50ccm/REV, shaft 16mm, G 3/8" BSP, rear ports	£178.36	€ 240.79
EPMM8C	Hydraulic motor EPMM8C, 8.2ccm/REV, shaft 16mm, G 3/8" BSP, rear ports	£142.01	€ 191.71
EPMM12,5CK	Hydraulic motor EPMM12,5CK, 12.9ccm/REV, shaft 14mm, G 3/8" BSP, rear ports	£144.36	€ 194.89
EPMM20CK	Hydraulic motor EPMM20CK, 19.9ccm/REV, shaft 14mm, G 3/8" BSP, rear ports	£146.76	€ 198.13
EPMM32CK	Hydraulic motor EPMM32CK, 31.8ccm/REV, shaft 14mm, G 3/8" BSP, rear ports	£149.27	€ 201.51
EPMM40CK	Hydraulic motor EPMM40CK, 40ccm/REV, shaft 14mm, G 3/8" BSP, rear ports	£159.44	€ 215.24
EPMM50CK	Hydraulic motor EPMM50CK, 50ccm/REV, shaft 14mm, G 3/8" BSP, rear ports	£178.36	€ 240.79
EPMM8CK	Hydraulic motor EPMM8CK, 8.2ccm/REV, shaft 14mm, G 3/8" BSP, rear ports	£142.01	€ 191.71
EPMMS12,5C	Hydraulic motor EPMM12,5C, 12.9ccm/REV, shaft 16mm, G 3/8" BSP, side ports	£144.36	€ 194.89
EPMMS20C	Hydraulic motor EPMM20C, 19.9ccm/REV, shaft 16mm, G 3/8" BSP, side ports	£146.76	€ 198.13
EPMMS32C	Hydraulic motor EPMM32C, 31.8ccm/REV, shaft 16mm, G 3/8" BSP, side ports	£149.27	€ 201.51
EPMMS40C	Hydraulic motor EPMM40C, 40ccm/REV, shaft 16mm, G 3/8" BSP, side ports	£159.44	€ 215.24
EPMMS50C	Hydraulic motor EPMM50C, 50ccm/REV, shaft 16mm, G 3/8" BSP, side ports	£178.36	€ 240.79
EPMMS8C	Hydraulic motor EPMM8C, 8.2ccm/REV, shaft 16mm, G 3/8" BSP, side ports	£142.01	€ 191.71
EPMMS12,5CK	Hydraulic motor EPMM12,5CK, 12.9ccm/REV, shaft 14mm, G 3/8" BSP, side ports	£144.36	€ 194.89
EPMMS20CK	Hydraulic motor EPMM20CK, 19.9ccm/REV, shaft 14mm, G 3/8" BSP, side ports	£146.76	€ 198.13
EPMMS32CK	Hydraulic motor EPMM32CK, 31.8ccm/REV, shaft 14mm, G 3/8" BSP, side ports	£149.27	€ 201.51
EPMMS40CK	Hydraulic motor EPMM40CK, 40ccm/REV, shaft 14mm, G 3/8" BSP, side ports	£159.44	€ 215.24
EPMMS50CK	Hydraulic motor EPMM50CK, 50ccm/REV, shaft 14mm, G 3/8" BSP, side ports	£178.36	€ 240.79
EPMMS8CK	Hydraulic motor EPMM8CK, 8.2ccm/REV, shaft 14mm, G 3/8" BSP, side ports	£142.01	€ 191.71

For all other M+S prices please contact the Flowfit sales team.

# M+S HYDRAULIC MOTOR SERIES EPM

www.flowfitonline.com  
TECH. DATA SHEET  
**MSM02**



M+S Hydraulic motors are one of the top quality hydraulic motors available on the Worldwide market today.

Suitable for many low-speed applications, eliminating gears, shafts, chains, belts, pulleys and other speed reduction components. All motors are compact and light in weight in proportion to the torque and power delivered, all motors are fully reversible and fully interchangeable with all other brands on the market.

2 YEARS MANUFACTURERS WARRANTY ON ALL M+S PRODUCTS

TYPE		EPM	EPM	EPM	EPM	EPM	EPM	EPM	EPM	EPM	EPM	EPM	EPM	EPM	
		25	32	40	50	80	100	125	160	200	250	315	400	500	630
Displacement [cm <sup>3</sup> /REV]		25	32	40	49,5	79,2	99	123,8	158,4	198	247,5	316,8	396	495	623,6
Max. Speed [RPM]	Cont	1600	1560	1500	1210	755"	605	486	378	303	242	190	150	120	95
	Int.(3)	1815	1720	1750	1515	945	755	605	472	378	303	236	189	150	120
Max. Torque [daNm]	Cont.	3,3	4,3	6,2	9,4	15,1	19,3	23,7	31,3	36,6	38	38	36	39	44
	Int.(3)	4,7	6,1	8,2	11,9	19,5	23,7	29,8	37,8	45,6	58,3	56	59	57	64
	Peak (4)	6,7	8,6	10,7	14,3	22,4	27,5	36,5	43,8	55	68,5	85	85,4	78	82
Max. Output Power [kW]	Cont.	4,5	5,8	8,4	10,1	10,2	10,5	10,2	10,1	10	7,5	5,8	4,6	3,5	3,3
	Int.(3)	6,1	7,8	11,6	12,2	12,5	12,8	12	12,1	12	12	9	7,8	7,2	5,6
Max. Pressure Drop [bar]	Cont	100	100	120	140	140	140	140	140	140	110	90	70	60	55
	Int.(3)	140	140	155	175	175	175	175	175	175	175	140	115	90	80
	Peak (4)	225	225	225	225	225	225	225	225	225	225	225	180	130	110
Max. Oil flow [l/min]	Cont	40	50	60	60	60	60	60	60	60	60	60	60	60	60
	Int.(3)	45	55	70	75	75	75	75	75	75	75	75	75	75	75
Max. Input Pressure bar [PSI]	Cont.	175	175	175	175	175	175	175	175	175	175	175	175	140	140
	Int.(3)	200	200	200	200	200	200	200	200	200	200	200	200	175	175
	Peak (4)	225	225	225	225	225	225	225	225	225	225	225	225	225	225
Max. Return Pressure [bar]	Cont	175	175	175	175	175	175	175	175	175	175	175	175	140	140
	Int.	200	200	200	200	200	200	200	200	200	200	200	200	175	175
	Peak	225	225	225	225	225	225	225	225	225	225	225	225	225	225
Weight [kg]		5,6	5,6	5,7	5,8	5,9	6,1	6,2	6,4	6,6	6,8	7,1	7,6	8,9	9,5

PART NUMBER	DESCRIPTION	NETT. PRICE	
		£ STERLING	€ EUROS
EPM025CD	HYDRAULIC MOTOR 25CCM/REV, 25MM SHAFT 1/2" BSP PORTS SAE A, HPS	£152.33	€ 205.65
EPM032CD	HYDRAULIC MOTOR 32CCM/REV, 25MM SHAFT 1/2" BSP PORTS SAE A, HPS	£161.18	€ 217.59
EPM040CD	HYDRAULIC MOTOR 40CCM/REV, 25MM SHAFT 1/2" BSP PORTS SAE A, HPS	£154.99	€ 209.24
EPM050CD	HYDRAULIC MOTOR 50CCM/REV, 25MM SHAFT 1/2" BSP PORTS SAE A, HPS	£156.19	€ 210.86
EPM080CD	HYDRAULIC MOTOR 80CCM/REV, 25MM SHAFT 1/2" BSP PORTS SAE A, HPS	£160.39	€ 216.53
EPM100CD	HYDRAULIC MOTOR 100CCM/REV, 25MM SHAFT 1/2" BSP PORTS SAE A, HPS	£163.19	€ 220.31
EPM125CD	HYDRAULIC MOTOR 125CCM/REV, 25MM SHAFT 1/2" BSP PORTS SAE A, HPS	£167.44	€ 226.04
EPM160CD	HYDRAULIC MOTOR 160CCM/REV, 25MM SHAFT 1/2" BSP PORTS SAE A, HPS	£171.64	€ 231.72
EPM200CD	HYDRAULIC MOTOR 200CCM/REV, 25MM SHAFT 1/2" BSP PORTS SAE A, HPS	£177.23	€ 239.26
EPM250CD	HYDRAULIC MOTOR 250CCM/REV, 25MM SHAFT 1/2" BSP PORTS SAE A, HPS	£181.42	€ 244.91
EPM315CD	HYDRAULIC MOTOR 315CCM/REV, 25MM SHAFT 1/2" BSP PORTS SAE A, HPS	£185.65	€ 250.64
EPM400CD	HYDRAULIC MOTOR 400CCM/REV, 25MM SHAFT 1/2" BSP PORTS SAE A, HPS	£192.66	€ 260.10
EPM500CD	HYDRAULIC MOTOR 500CCM/REV, 25MM SHAFT 1/2" BSP PORTS SAE A, HPS	£235.06	€ 317.34
EPM630CD	HYDRAULIC MOTOR 630CCM/REV, 25MM SHAFT 1/2" BSP PORTS SAE A, HPS	£273.75	€ 369.55
EPM025COD	HYDRAULIC MOTOR 25.4CCM/REV, 25.4MM SHAFT 1/2" BSP PORTS SAE A, HPS	£152.33	€ 205.65

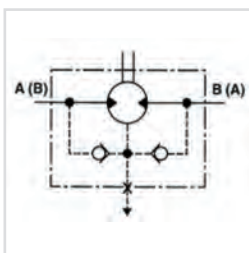
Continued on next page

PART NUMBER	DESCRIPTION	NETT. PRICE	
		£ STERLING	€ EUROS
EPM032COD	HYDRAULIC MOTOR 32CCM/REV, 25.4MM SHAFT 1/2" BSP PORTS SAE A, HPS	£161.18	€ 217.59
EPM040COD	HYDRAULIC MOTOR 40CCM/REV, 25.4MM SHAFT 1/2" BSP PORTS SAE A, HPS	£154.99	€ 209.24
EPM050COD	HYDRAULIC MOTOR 50CCM/REV, 25.4MM SHAFT 1/2" BSP PORTS SAE A, HPS	£156.19	€ 210.86
EPM080COD	HYDRAULIC MOTOR 80CCM/REV, 25.4MM SHAFT 1/2" BSP PORTS SAE A, HPS	£160.39	€ 216.53
EPM100COD	HYDRAULIC MOTOR 100CCM/REV, 25.4MM SHAFT 1/2" BSP PORTS SAE A, HPS	£163.19	€ 220.31
EPM125COD	HYDRAULIC MOTOR 125.4CCM/REV, 25.4MM SHAFT 1/2" BSP PORTS SAE A, HPS	£167.44	€ 226.04
EPM160COD	HYDRAULIC MOTOR 160CCM/REV, 25.4MM SHAFT 1/2" BSP PORTS SAE A, HPS	£171.64	€ 231.72
EPM200COD	HYDRAULIC MOTOR 200CCM/REV, 25.4MM SHAFT 1/2" BSP PORTS SAE A, HPS	£177.23	€ 239.26
EPM250COD	HYDRAULIC MOTOR 25.40CCM/REV, 25.4MM SHAFT 1/2" BSP PORTS SAE A, HPS	£181.42	€ 244.91
EPM315COD	HYDRAULIC MOTOR 315CCM/REV, 25.4MM SHAFT 1/2" BSP PORTS SAE A, HPS	£185.65	€ 250.64
EPM400COD	HYDRAULIC MOTOR 400CCM/REV, 25.4MM SHAFT 1/2" BSP PORTS SAE A, HPS	£192.66	€ 260.10
EPM500COD	HYDRAULIC MOTOR 500CCM/REV, 25.4MM SHAFT 1/2" BSP PORTS SAE A, HPS	£235.06	€ 317.34
EPM630COD	HYDRAULIC MOTOR 630CCM/REV, 25.4MM SHAFT 1/2" BSP PORTS SAE A, HPS	£273.75	€ 369.55

For all other M+S prices please contact the Flowfit sales team.

## M+S HYDRAULIC MOTOR SERIES EPRM

www.flowfitonline.com  
TECH. DATA SHEET  
**MSM03**



M+S Hydraulic motors are one of the top quality hydraulic motors available on the Worldwide market today.

Suitable for many low-speed applications, eliminating gears, shafts, chains, belts, pulleys and other speed reduction components. All motors are compact and light in weight in proportion to the torque and power delivered, all motors are fully reversible and fully interchangeable with all other brands on the market.

Interchangeable with Danfoss OMR range of hydraulic motors.

2 YEARS MANUFACTURERS WARRANTY ON ALL M+S PRODUCTS

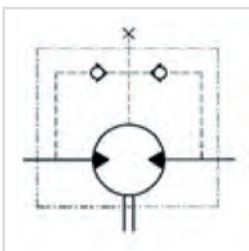
TYPE		EPRM	EPRM	EPRM	EPRM	EPRM	EPRM	EPRM	EPRM	EPRM
		50	80	100	125	160	200	250	315	400
Displacement [cm <sup>3</sup> /REV]		51,5	80,3	99,8	125,7	159,6	199,8	250,1	315,7	397
Max. Speed [RPM]	Cont.	775	750	600	475	375	300	240	190	150
	Int.(3)	970	940	750	600	470	375	300	240	190
Max. Torque [daNm]	Cont.	10	20	24	30	39	38,5	39	36	38
	Int.(3)	13	22	28	34	43	46	47	47	47
	Peak (4)	17	27	32	37	46	56	60	61	61
"Max. Output Power [kW]"	Cont.	7	12,5	13	12,5	11,5	9	8	5	4,8
	Int.(3)	8,5	15	15	14,5	14	12	9,5	8	6,8
Max. Pressure Drop [bar]	Cont.	140	175	175	175	175	140	110	85	65
	Int.(3)	175	200	200	200	200	175	140	115	90
	Peak (4)	225	225	225	225	225	225	200	150	115
Max. Oil flow [l/min]	Cont.	40	60	60	60	60	60	60	60	60
	Int.(3)	50	75	75	75	75	75	75	75	75
Max. Input Pressure [bar]	Cont.	175	175	175	175	175	175	175	175	175
	Int.(3)	200	200	200	200	200	200	200	200	200
	Peak (4)	225	225	225	225	225	225	225	225	225
Weight [kg]		6,8	6,9	7,2	7,3	7,5	8	8,4	9,1	9,8

PART NUMBER	DESCRIPTION	NETT. PRICE	
		£ STERLING	€ EUROS
EPRM050CD	HYDRAULIC MOTOR 50CCM/REV, 25MM SHAFT 1/2" BSP PORTS SAE A, HPS	£211.52	€ 285.55
EPRM080CD	HYDRAULIC MOTOR 80CCM/REV, 25MM SHAFT 1/2" BSP PORTS SAE A, HPS	£217.29	€ 293.34
EPRM100CD	HYDRAULIC MOTOR 100CCM/REV, 25MM SHAFT 1/2" BSP PORTS SAE A, HPS	£221.12	€ 298.51
EPRM125CD	HYDRAULIC MOTOR 125CCM/REV, 25MM SHAFT 1/2" BSP PORTS SAE A, HPS	£226.95	€ 306.39
EPRM160CD	HYDRAULIC MOTOR 160CCM/REV, 25MM SHAFT 1/2" BSP PORTS SAE A, HPS	£221.08	€ 298.46
EPRM200CD	HYDRAULIC MOTOR 200CCM/REV, 25MM SHAFT 1/2" BSP PORTS SAE A, HPS	£240.07	€ 324.10
EPRM250CD	HYDRAULIC MOTOR 250CCM/REV, 25MM SHAFT 1/2" BSP PORTS SAE A, HPS	£246.20	€ 332.37
EPRM315CD	HYDRAULIC MOTOR 315CCM/REV, 25MM SHAFT 1/2" BSP PORTS SAE A, HPS	£252.12	€ 340.35
EPRM400CD	HYDRAULIC MOTOR 400CCM/REV, 25MM SHAFT 1/2" BSP PORTS SAE A, HPS	£261.62	€ 353.18
EPRM050COD	HYDRAULIC MOTOR 50CCM/REV, 1" SHAFT 1/2" BSP PORTS SAE A, HPS	£211.52	€ 285.55
EPRM080COD	HYDRAULIC MOTOR 80CCM/REV, 1" SHAFT 1/2" BSP PORTS SAE A, HPS	£217.29	€ 293.34
EPRM100COD	HYDRAULIC MOTOR 100CCM/REV, 1" SHAFT 1/2" BSP PORTS SAE A, HPS	£221.12	€ 298.51
EPRM125COD	HYDRAULIC MOTOR 125CCM/REV, 1" SHAFT 1/2" BSP PORTS SAE A, HPS	£226.95	€ 306.39
EPRM160COD	HYDRAULIC MOTOR 160CCM/REV, 1" SHAFT 1/2" BSP PORTS SAE A, HPS	£221.08	€ 298.46
EPRM200COD	HYDRAULIC MOTOR 200CCM/REV, 1" SHAFT 1/2" BSP PORTS SAE A, HPS	£240.07	€ 324.10
EPRM250COD	HYDRAULIC MOTOR 250CCM/REV, 1" SHAFT 1/2" BSP PORTS SAE A, HPS	£246.20	€ 332.37
EPRM315COD	HYDRAULIC MOTOR 315CCM/REV, 1" SHAFT 1/2" BSP PORTS SAE A, HPS	£252.12	€ 340.35
EPRM400COD	HYDRAULIC MOTOR 400CCM/REV, 1" SHAFT 1/2" BSP PORTS SAE A, HPS	£261.62	€ 353.18

For all other M+S prices please contact the Flowfit sales team.

## M+S HYDRAULIC MOTOR SERIES EPMS

www.flowfitonline.com  
TECH. DATA SHEET  
**MSM04**



M+S Hydraulic motors are one of the top quality hydraulic motors available on the Worldwide market today.

Suitable for many low-speed applications, eliminating gears, shafts, chains, belts, pulleys and other speed reduction components. All motors are compact and light in weight in proportion to the torque and power delivered, all motors are fully reversible and fully interchangeable with all other brands on the market.

Interchangeable with Danfoss OMS range of Hydraulic Motors

2 YEARS MANUFACTURERS WARRANTY ON ALL M+S PRODUCTS

TYPE		EPMS	EPMS	EPMS	EPMS	EPMS	EPMS	EPMS	EPMS	EPMS	EPMS	EPMS
		80	100	125	160	200	250	315	400	475	525	565
Displacement [cc/REV]		80,5	100	125,7	159,7	200	250	314,9	397	474,6	522,7	564,9
Max. Speed [RPM]	Cont	810	750	600	470	375	300	240	190	160	145	130
	Int.(1)	1000	900	720	560	450	360	290	230	190	175	160
Max. Torque [daNm]	Cont.	24	30,5	37,5	49	61	72	82,5	86,5	85	85	85
	Int.(1)	31	39	49	60	72	87	100	99	99	99	99
Max. Output Power [kW]	Cont	15,5	18	18	16,5	16,5	14,5	15	11	8,4	7,6	6,9
	Int.(1)	19,5	22,8	22,5	23	22	18	17	12,5	11,3	10,4	9,6
Max. Pressure Drop [bar]	Cont.	210	210	210	210	210	200	200	160	130	115	105
	Int.(1)	275	275	275	275	275	250	240	190	150	135	125
	Peak (2)	295	295	295	295	295	270	260	210	170	155	145
Max. Oil flow [l/min]	Cont	65	75	75	75	75	75	75	75	75	75	75
	Int.(1)	80	90	90	90	90	90	90	90	90	90	90
Max. Input Pressure [bar]	Cont.	230	230	230	230	230	230	230	230	230	230	230
	Int.(1)	295	295	295	295	295	295	295	295	295	295	295
	Peak (2)	300	300	300	300	300	300	300	300	300	300	300
Weight [kg]		9,9	10,1	10,4	10,8	11,2	11,7	12,4	13,1	14,1	14,6	15

(1) Intermittent operation rating applies to 6 sec. of every minute

(2) Peak load rating applies to 0,6 sec of every minute

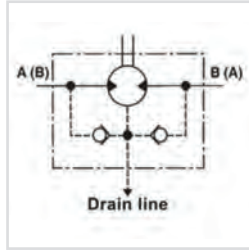
PART NUMBER	DESCRIPTION	NETT. PRICE	
		£ STERLING	€ EUROS
EPMS080C	HYDRAULIC MOTOR 80CCM/REV, 32MM SHAFT 1/2" BSP PORTS STD 4 BOLT MOUNT	£327.56	€ 442.22
EPMS100C	HYDRAULIC MOTOR 100CCM/REV, 32MM SHAFT 1/2" BSP PORTS STD 4 BOLT MOUNT	£332.01	€ 448.22
EPMS125C	HYDRAULIC MOTOR 125CCM/REV, 32MM SHAFT 1/2" BSP PORTS STD 4 BOLT MOUNT	£337.20	€ 455.22
EPMS160C	HYDRAULIC MOTOR 160CCM/REV, 32MM SHAFT 1/2" BSP PORTS STD 4 BOLT MOUNT	£344.91	€ 465.63
EPMS200C	HYDRAULIC MOTOR 200CCM/REV, 32MM SHAFT 1/2" BSP PORTS STD 4 BOLT MOUNT	£350.69	€ 473.43
EPMS250C	HYDRAULIC MOTOR 250CCM/REV, 32MM SHAFT 1/2" BSP PORTS STD 4 BOLT MOUNT	£356.93	€ 481.85
EPMS315C	HYDRAULIC MOTOR 315CCM/REV, 32MM SHAFT 1/2" BSP PORTS STD 4 BOLT MOUNT	£377.65	€ 509.84
EPMS400C	HYDRAULIC MOTOR 400CCM/REV, 32MM SHAFT 1/2" BSP PORTS STD 4 BOLT MOUNT	£396.91	€ 535.83

For all other M+S prices please contact the Flowfit sales team.



# M+S HYDRAULIC MOTOR SERIES EPMT

www.flowfitonline.com  
TECH. DATA SHEET  
**MSM05**



M+S Hydraulic motors are one of the top quality hydraulic motors available on the Worldwide market today.

Suitable for many low-speed applications, eliminating gears, shafts, chains, belts, pulleys and other speed reduction components. All motors are compact and light in weight in proportion to the torque and power delivered, all motors are fully reversible and fully interchangeable with all other brands on the market.

Hydraulic motor, 160cc 4 bolt mount, 40mm straight keyed shaft.

Interchangeable with Danfoss OMT Hydraulic motors

2 YEARS MANUFACTURERS WARRANTY ON ALL M+S PRODUCTS

TYPE		EPMT	EPMT	EPMT	EPMT	EPMT	EPMT	EPMT	EPMT
		160	200	250	315	400	500	630	725
Displacement [cm <sup>3</sup> /REV]		161,1	201,4	251,8	326,3	410,9	523,6	631,2	724,3
Max. Speed [RPM]	Cont.	622	620	496	382	304	238	197	172
	Int.(1)	775	752	601	461	368	289	234	209
Max. Torque [daNm]	Cont.	47	59	73	95	108	122	130	127
	Int.(1)	56	71	88	114	126	137	148	147
	Peak (2)	66	82	102	133	144	160	176	175
Max. Output Power [kW]	Cont.	26,5	33,5	33,5	33,5	30	26,5	24,3	20,2
	Int.(1)	32	40	40	40	35	30	27,5	26,8
Max. Pressure Drop [bar]	Cont.	200	200	200	200	180	160	140	120
	Int.(1)	240	240	240	240	210	180	160	140
	Peak (2)	280	280	280	280	240	210	190	165
Max. Oil flow [l/min]	Cont	100	125	125	125	125	125	125	125
	Int.(1)	125	150	150	150	150	150	150	150
Weight [kg]		20	21,5	21	22	23	24	23,5	24,5

(1) Intermittent operation rating applies to 6 sec. of every minute

(2) Peak load rating applies to 0,6 sec of every minute

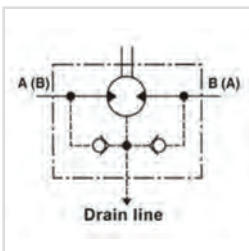
PART NUMBER	DESCRIPTION	NETT. PRICE	
		£ STERLING	€ EUROS
EPMT160C	HYDRAULIC MOTOR 160CCM/REV, 40MM SHAFT 1/2" BSP PORTS STD 4 BOLT MOUNT	£585.80	€ 790.83
EPMT200C	HYDRAULIC MOTOR 200CCM/REV, 40MM SHAFT 1/2" BSP PORTS STD 4 BOLT MOUNT	£598.31	€ 807.72
EPMT250C	HYDRAULIC MOTOR 250CCM/REV, 40MM SHAFT 1/2" BSP PORTS STD 4 BOLT MOUNT	£617.34	€ 833.40
EPMT315C	HYDRAULIC MOTOR 315CCM/REV, 40MM SHAFT 1/2" BSP PORTS STD 4 BOLT MOUNT	£633.23	€ 854.85
EPMT400C	HYDRAULIC MOTOR 400CCM/REV, 40MM SHAFT 1/2" BSP PORTS STD 4 BOLT MOUNT	£658.54	€ 889.03
EPMT500C	HYDRAULIC MOTOR 500CCM/REV, 40MM SHAFT 1/2" BSP PORTS STD 4 BOLT MOUNT	£702.85	€ 948.86
EPMT630C	HYDRAULIC MOTOR 630CCM/REV, 40MM SHAFT 1/2" BSP PORTS STD 4 BOLT MOUNT	£733.65	€ 990.44
EPMT725C	HYDRAULIC MOTOR 725CCM/REV, 40MM SHAFT 1/2" BSP PORTS STD 4 BOLT MOUNT	£772.85	€ 1,043.34

For all other M+S prices please contact the Flowfit sales team.



# M+S HYDRAULIC MOTOR SERIES EPMV

www.flowfitonline.com  
TECH. DATA SHEET  
**MSM06**



M+S Hydraulic motors are one of the top quality hydraulic motors available on the Worldwide market today.

Suitable for many low-speed applications, eliminating gears, shafts, chains, belts, pulleys and other speed reduction components. All motors are compact and light in weight in proportion to the torque and power delivered, all motors are fully reversible and fully interchangeable with all other brands on the market.

Interchangeable with danfoss OMV series motors

2 YEARS MANUFACTURERS WARRANTY ON ALL M+S PRODUCTS

TYPE	FFPMT		EPMV		EPMV		EPMV			
	315		400		500		630			
Displacement [cm <sup>3</sup> /REV]	314,5		400,9		499,6		629,1		801,8	
Max. Speed [RPM]	Cont.	510	500	400	320	250				
	Int.(1)	630	600	480	380	300				
Max. Torque [daNm]	Cont.	92	118	146	166	188				
	Int.(1)	111	141	176	194	211				
	Peak (2)	129	164	205	221	247				
"Max. Output Power [kW]"	Cont.	42,5	53,5	53,5	48	42,5				
	Int.(1)	51	64	64	56	48				
Max. Pressure Drop [bar]	Cont.	200	200	200	180	160				
	Int.(1)	240	240	240	210	180				
	Peak(2)	280	280	280	240	210				
"Max. Oil flow [l/min]"	Cont.	160	200	200	200	200				
	Int.(1)	200	240	240	240	240				
Weight [kg]	31,8		32,6		33,5		34,9		36,5	

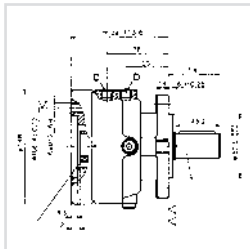
PART NUMBER	DESCRIPTION	NETT. PRICE	
		£ STERLING	€ EUROS
EPMV315C	HYDRAULIC MOTOR 315CCM/REV, 50MM SHAFT 1" BSP PORTS STD 4 BOLT MOUNT	£835.29	€ 1,127.65
EPMV400C	HYDRAULIC MOTOR 400CCM/REV, 50MM SHAFT 1" BSP PORTS STD 4 BOLT MOUNT	£868.65	€ 1,172.69
EPMV500C	HYDRAULIC MOTOR 500CCM/REV, 50MM SHAFT 1" BSP PORTS STD 4 BOLT MOUNT	£927.06	€ 1,251.54
EPMV630C	HYDRAULIC MOTOR 630CCM/REV, 50MM SHAFT 1" BSP PORTS STD 4 BOLT MOUNT	£1,085.55	€ 1,465.50
EPMV800C	HYDRAULIC MOTOR 800CCM/REV, 50MM SHAFT 1" BSP PORTS STD 4 BOLT MOUNT	£1,143.72	€ 1,544.02

For all other M+S prices please contact the Flowfit sales team.



## ELB BRAKES

www.flowfitonline.com  
TECH. DATA SHEET  
**MSM07**



Hydraulic Disc Brakes are designed for use with heavy duty machinery and off-highway vehicles in the construction, material handling, agriculture, mining, sanitation and timber industries. They are also used in a multitude of winching applications and in hydrostatic engine drive systems.

The Hydraulic Disk Brake is sprung loaded to apply the brake, and hydraulic pressure is required to release the brake. Normal operation is to have the brake pressurized in the released position with the vehicle hydraulic system running. Any function which reduced the hydraulic system pressure below the release pressure of the brake will allow the springs to apply the brake.

This brake is designed to be a parking brake only. Dynamic braking is not recommended.

**Code example**

**ELB288-**

MOTOR TYPE

**43-**

SIZE

**C**

OUTPUT SHAFT OPTION

### OUTPUT SHAFT OPTIONS

ELB288		ELB289/90		ELB314/315	
C	25mm straight keyed shaft	CB	32mm straight keyed shaft	C	40mm straight keyed shaft
CO	1" straight keyed shaft	KB	35mm dia 1:10 taper shaft	CO	1 1/2" straight keyed shaft
SH	1" 6B splined shaft			SH	1 1/2" 17T splined shaft
				K	45mm dia 1:10 taper shaft

PART NUMBER		SIZE										
		7	14	21	29	32	43	63	65	85	110	130
TYPE ELB 288 -***-**-**	EPM, EPRM, EPMS	*	*	*		*	*	*				
TYPE ELB 289 -***-**-**	EPMS (standard mount)			*		*	*	*				
TYPE ELB 290 -***-**-**	EPMS (wheel mount)			*		*	*	*				
TYPE ELB 314 -***-**-**	EPMTS (standard mount)			*	*		*	*	*	*	*	*
TYPE ELB 315 -***-**-**	EPMTS (wheel mount)			*	*		*	*	*	*	*	*
Static torque, [daNm]		6-8	13-15	20-22	28-29	31-34	42-45	61-64	61-70	83-92	108-118	126-136
Opening pressure min, [bar]		4-5	8-9	12-13	6-7	18-20	24-26	38-39	13-15	18-20	23-25	27-29
Opening pressure max, [bar]												

## HKU & HKUS STEERING UNITS

www.flowfitonline.com  
TECH. DATA SHEET  
**MSM08**



The M+S Hydraulic Hydrostatic Steering units are used in low-speed vehicles which driving speed does not exceed 60 km/h - such as : building machines, fork-lift trucks, harvesting machines, off-highway equipment and others. These hydraulic units amplify the torque to the steering wheels, with no need of hard mechanical connection.

The XY hydrostatic steering unit incorporates an axially displaced tracing valve and a metering pump in one housing. The working liquid is supplied by a separate pump and then is directed by the metering pump to the steering cylinders.

The XY steering unit is manufactured with a built-in check valves, and there is an option for a built-in relief valve in the inlet.

**VARIOUS OPTIONS AVAILABLE.  
PLEASE CONTACT US FOR FURTHER DETAILS.**

