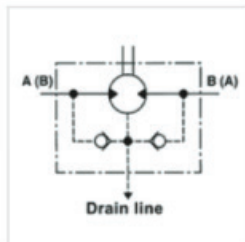


## M+S HYDRAULIC MOTOR SERIES EPMV



TYPE		FFPMT	EPMV	EPMV	EPMV	EPMV
		315	400	500	630	800
Displacement [cm <sup>3</sup> /REV]		314,5	400,9	499,6	629,1	801,8
Max. Speed [RPM]	Cont.	510	500	400	320	250
	Int.(1)	630	600	480	380	300
Max. Torque [daNm]	Cont.	92	118	146	166	188
	Int.(1)	111	141	176	194	211
	Peak (2)	129	164	205	221	247
*Max. Output Power [kW]	Cont.	42,5	53,5	53,5	48	42,5
	Int.(1)	51	64	64	56	48
Max. Pressure Drop [bar]	Cont.	200	200	200	180	160
	Int.(1)	240	240	240	210	180
	Peak(2)	280	280	280	240	210
*Max. Oil flow [l/min]	Cont.	160	200	200	200	200
	Int.(1)	200	240	240	240	240
Weight [kg]		31,8	32,6	33,5	34,9	36,5