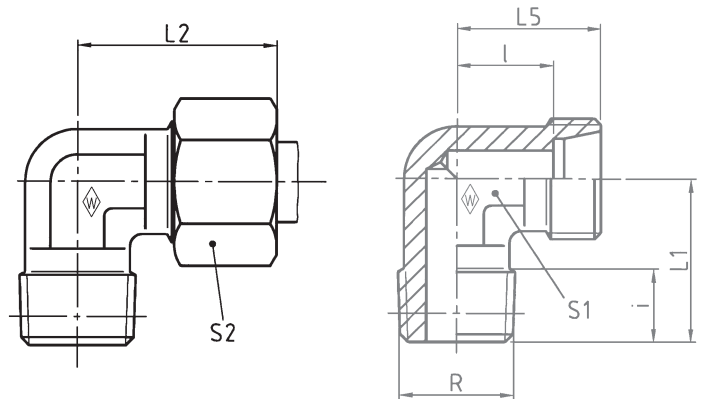


### P-WEV ..... RK

Stud thread: BSP thread (taper)  
Einschraubgewinde: Whitworth-Rohrgewinde (kegelig)  
Filetage mâle: Whitworth (conique)



Series	bar	Tube OD		Type	Reference	kg per 100 pcs.							
Reihe	PN	Rohr-AD	R	Typ	Best.-Nr.	kg per 100 St.							
Série	(psi)	Tube Ø ext.		Désignation	Réf.	kg par 100 p.	L <sub>1</sub>	L <sub>2</sub>	L <sub>5</sub>	l	i	S <sub>1</sub>	S <sub>2</sub>
LL	100 (1450)	4	R 1/8 keg	<b>S-WEV 4 LLRK</b>	<b>WAL038408</b>		17	21	15	11	8	9	10
		6	R 1/8 keg	<b>S-WEV 6 LLRK</b>	<b>WAL038410</b>		17	21	15	9,5	8	9	12
		8	R 1/8 keg	<b>S-WEV 8 LLRK</b>	<b>WAL038411</b>		20	23	17	11,5	8	12	14
L	250 (3626)	6	R 1/8 keg	<b>P-WEV 6 LRK</b>	<b>WAL373195</b>		20	27	19	12	8	12	14
		6	R 1/4 keg	<b>P-WEV 6 L/R 1/4 K</b>	<b>WAL373196</b>		26	29	21	14	12	12	14
		8	R 1/4 keg	<b>P-WEV 8 LRK</b>	<b>WAL373197</b>		26	29	21	14	12	12	17
		10	R 1/4 keg	<b>P-WEV 10 LRK</b>	<b>WAL373198</b>		27	30	22	15	12	14	19
		10	R 3/8 keg	<b>P-WEV 10 L/R 3/8 K</b>	<b>WAL373199</b>		27	30	22	15	12	14	19
		12	R 1/4 keg	<b>P-WEV 12 L/R 1/4 K</b>	<b>WAL373200</b>		28	32	24	17	12	17	22
		12	R 3/8 keg	<b>P-WEV 12 LRK</b>	<b>WAL373201</b>		28	32	24	17	12	17	22
		15	R 1/2 keg	<b>P-WEV 15 LRK</b>	<b>WAL373202</b>	13,0	34	36	28	21	14	19	27
S	160 (2321)	18	R 1/2 keg	<b>P-WEV 18 LRK</b>	<b>WAL373203</b>	16,6	36	40	31	23,5	14	24	32
		6	R 1/4 keg	<b>P-WEV 6 SRK</b>	<b>WAL373204</b>		26	31	23	16	12	12	17
		8	R 1/4 keg	<b>P-WEV 8 SRK</b>	<b>WAL373205</b>		27	32	24	17	12	14	19
		10	R 3/8 keg	<b>P-WEV 10 SRK</b>	<b>WAL373206</b>		28	34	25	17,5	12	17	22
		12	R 3/8 keg	<b>P-WEV 12 SRK</b>	<b>WAL373207</b>		28	38	29	21,5	12	17	24
		14	R 1/2 keg	<b>P-WEV 14 SRK</b>	<b>WAL373208</b>	15,3	32	40	30	22	14	19	27
		400 (5801)	16	R 1/2 keg	<b>P-WEV 16 SRK</b>	<b>WAL373209</b>	17,9	32	43	33	24,5	14	24

L<sub>2</sub> = approximate length with nut tightened  
L<sub>2</sub> = Ungefährmaß bei angezogener Überwurfmutter  
L<sub>2</sub> = longueur approximative, l'écrou étant bloqué

\* PN 630 only applies to taper port forms;  
\* PN 630 nur bei kegeligen Einschraubblöchern, sonst PN 400  
\* PN 400 is applicable to parallel port forms  
\* PN 630 seulement avec taraudage conique, sinon PN 400