

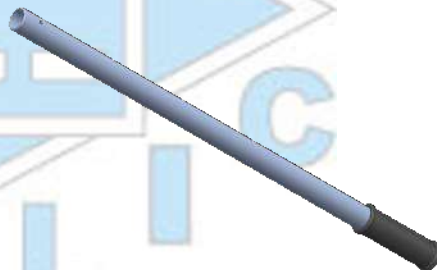


Leve per pompe a mano
-
Hand pumps levers

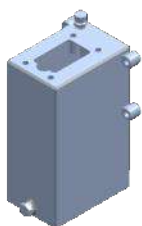
AISI316

LV

Codice - Code	LV27X600 -AISI316	LV27X400 -AISI316	LV27X1000 -AISI316
Manopola in gomma - Plastic hand grip	X	X	X
Zincatura bianca - White zinc-plating	X	X	X
Diametro esterno - Outside diameter (Dmm)	27	27	27
L (mm)	600	400	1000
Peso - Weight (Kg)	0,9	0,6	1,5



www.glyhydraulic.it



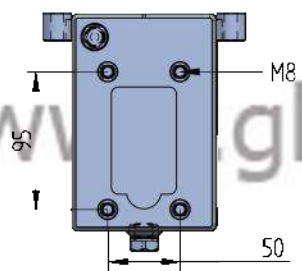
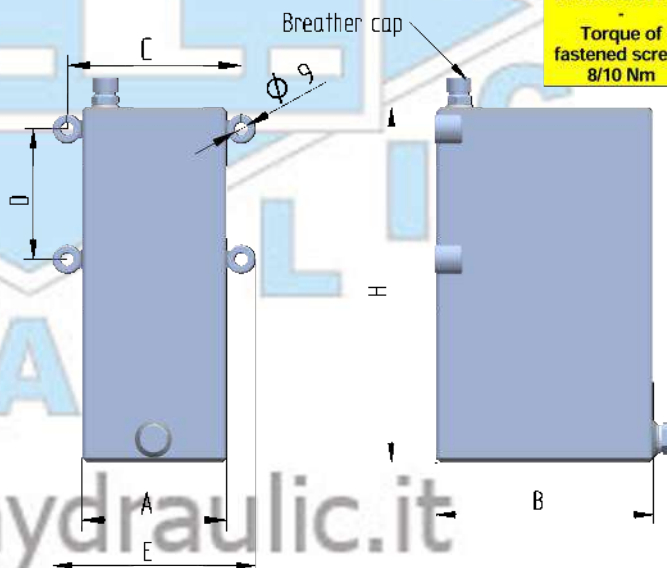
Serbatoi per pompa a mano
-
Hand pump oil tanks

AISI316

SR

Codice - Code	SR 01 AISI316	SR 02 AISI316	SR 03 AISI316
Capacità - Tank capacity (litres)	1	2	3
Tappo sfiato - Breather cap	x	x	x
A (mm)	100	100	100
B (mm)	150	150	150
C (mm)	120	120	120
D (mm)	90	90	90
E (mm)	140	140	140
H (mm)	120	180	245
Peso - Weight (Kg)	2	2,2	2,5

Coppia di serraggio vite con rivetto: 8/10 Nm
-
Torque of fastened screw: 8/10 Nm



www.glyhydraulic.it

Dati tecnici indicativi e non impegnativi.
L'azienda si riserva di apportare modifiche in qualsiasi momento e senza preavviso.
Technical data not binding. Modifications reserved without prior notice.

G.L. HYDRAULIC S.R.L.

Via F. Lamborghini, 36 - 40019 Sant' Agata Bolognese (BO) Italy

Tel. +39 (0)51 6828230 Fax +39(0)51 9599081 <http://www.glyhydraulic.it> - E-mail: staff@glyhydraulic.it

Cap. Soc. : € 31.200,00 i.v. - R.E.A. : BO399971 - C.F. e P.I. : IT01808760357