

**GEAR PUMPS, BELL HOUSING
AND ELECTIC MOTORS**

HYDRAULIC TWO STAGE HI-LO GEAR PUMPS

PRODUCT

HYDRAULIC GEAR PUMP MODEL GP-CBN TECHNICAL DATA

PAGE

241



**FROM
ONLY
£88.60
+VAT**



QUALITY PRODUCTS



FREE ADVICE

**FREE UK
NEXT DAY
DELIVERY
ON ALL
WEB
ORDERS**

HYDRAULIC GEAR PUMP MODEL GP-CBN TECHNICAL DATA



These 2 stage pumps can give you much faster cycle times and higher possible pressures with a small engine. Excellent for use on log splitters. 85% efficient.

Model GP-CBN is a HI/LO Hydraulic Gear Pump with 12 displacement combinations with maximum pressures of 950 psi for the low pressure pump and 3000 psi for the high pressure pump.

The change from LO to HI pressure is automatic with the LO side pressure pre set from 400 psi to 900 psi. The HI/LO section of the pump is all aluminum and the endplates are cast steel.

Applications for the HI/LO pump are log splitters, presses etc. where rapid movement of the cylinder at low pressure is required prior to automatically switching to the high pressure mode to meet load requirements.

Recommended working conditions:

1. FILTRATION 25 micron or better
2. OIL VISCOSITY 6 to 200 cSt
3. INLET PRESSURE 12 to 32 psi abs.
4. OIL TEMPERATURE -25 to 80 degrees C (-12 to 175 degrees F).
5. AMBIENT -22 to 55 degrees C (-8 to 130 degrees F).

Flow rate in gpm
Displacement (cu.in/rev) X speed (rpm) / 231
Volumetric efficiency 93%
1 cu/in = 16.387 cc/rev
Clockwise Rotation

MODEL PREFIX GP	FLOW GPM AT 3600 RPM	DISPLACEMENT LO		DISPLACEMENT HIGH		PRESSURE PSI		SPEED RPM	NETT. PRICE	
		CU IN/REV	CC/REV	CU IN/REV	CC/REV	LO	HI		£ STERLING	€ EUROS
GPCBN080PC*	8	0.130	2.1	0.385	6.3	406/913	3000	3600	£88.60	€ 119.61
GPCBN110PC*	11	0.220	3.6	0.537	8.8	654	3000	3600	£88.60	€ 119.61
GPCBN160PC*	16	0.256	4.2	0.793	13	654	3000	3600	£88.60	€ 119.61
GPCBN220PC	22	0.429	7.04	0.989	16.22	400/900	3000	3600	£94.64	€ 127.76

HYDRAULIC GEAR PUMP MODEL GP-CBN ORDERING INFORMATION

GP
Gear Pump

CBN
HI/LO series

080
Nominal Flow GPM at 3600 rpm.

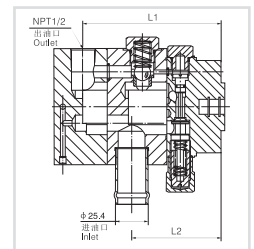
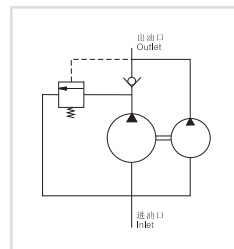
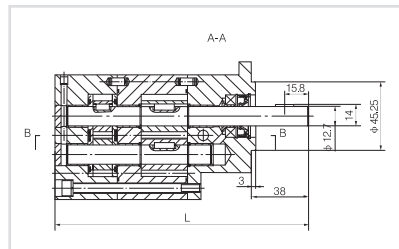
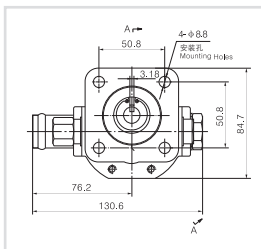
P
Drive Shaft P-1/2 in. Dia Straight

C
Rotation Direction

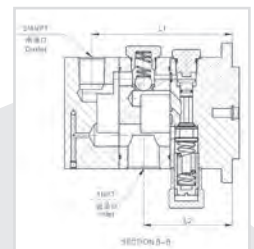
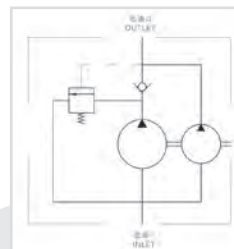
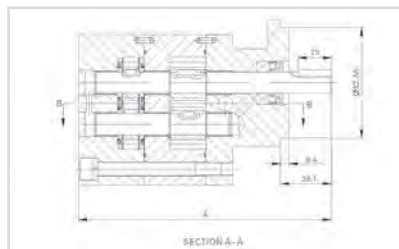
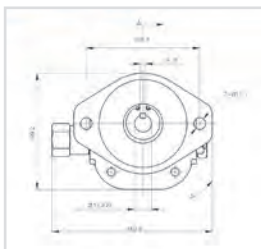
080/110/160/220

C- Clockwise
A-Counter Clockwise
(viewed from drive shaft end)

HYDRAULIC GEAR PUMP MODEL GP-CBN INSTALLATION DATA



Port Sizes Inlet - 1in. Pipe Outlet - 1/2 NPT



MODEL	DIMENSIONS		
	L INCHES (MM)	L1 INCHES (MM)	L2 INCHES (MM)
GPCBN080PC	6.09 (154.7)	3.71 (94.4)	2.42 (61.6)
GPCBN110PC	6.61 (167.9)	4.23 (107.6)	2.74 (69.6)

MODEL	DIMENSIONS		
	L INCHES (MM)	L1 INCHES (MM)	L2 INCHES (MM)
GPCBN160PC	7.27 (184.7)	4.80 (122.1)	3.31 (84.1)
GPCBN220PC	7.40 (188)	4.96 (126)	3.13 (79.6)