

HYDRAULIC VALVES

HYDRAULIC CONTROL VALVES

PRODUCT	PAGE
MONOBLOCK DIRECTIONAL CONTROL VALVES TYPE HDM	14
SLICE DIRECTIONAL CONTROL VALVES TYPE HDS	18
ROTARY HYDRAULIC OPERATED LEVER VALVES	22
MONOBLOCK CONTROL VALVE C/W FLOW CONTROL	25
HYDRAULIC HOSE-REEL VALVE LEVER OPERATED C/W FLOW CONTROL	26
HYDRAULIC HOSE-REEL VALVE WITHOUT FLOW CONTROL	27
SOLENOID DIVERTER VALVES	28
LEVER OPERATED DIVERTER VALVES 'DF' SERIES	29
MONOBLOCK DIRECTIONAL CONTROL VALVES	30



QUALITY PRODUCTS



FREE ADVICE



MONOBLOCK DIRECTIONAL CONTROL VALVES TYPE HDM

BUCHER
hydraulics



The valves of the HDM range are compact monobloc valves, available in 4 sizes. With the combination of different directional valves, stops, operators and shock-and/or anti-cavitation valves* this monobloc is adaptable to any requirements.

The HDM valves are available with open centre, high pressure carryover or closed centre operation.

If you can't see what you need – please ask!

- Lever control
- Electro hydraulic on/off
- Parallel and series circuits
- Unload in neutral, high pressure carryover
- Ancillary Valves: shock-and anticavitation valves, shock valves, check valves

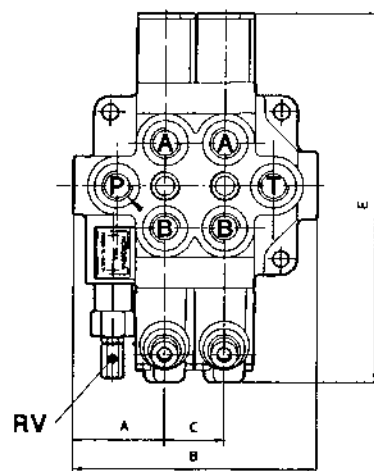
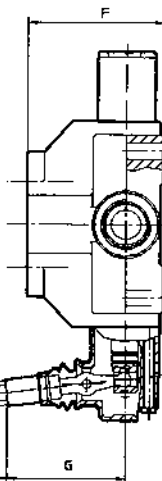
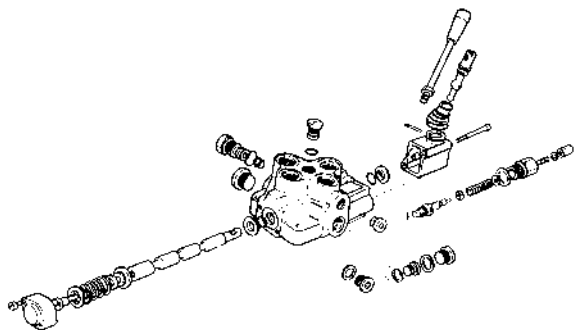
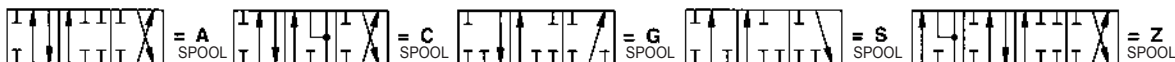
TECHNICAL DATA		HDM140	HDM 11 P	HDM 11 S	HDM 18	HDM 25	SD18
Number of spools		1	2-6	1-6	1-4	1-2	1-6
Flow rate	l/min	40	45	45	70	100	160
Inlet pressure max.	bar	320	400	400	400	400	250
Return pressure max.	bar	30	30	30	30	30	25
Fluid		Mineral oil to DIN 51524					
Operating temperature	°C	-20 to +80					
Viscosity range	mm ² /s	16 to 75					
Filtration	Micron	30					

Directional valve

CONTROLS AVAILABLE

Lever / cable control / electro hydraulic (on/off) / electro hydraulic proportional

SPOOLS AVAILABLE – PLUS MANY MORE



LEVER LENGTHS – MM

HDM 140	150	200	250	300	-
HDM 11	150	200	250	300	-
HDM 18	-	185	250	300	350
HDM 25	-	185	250	300	350
SD18	150	200	250	300	-

TECHNICAL DATA	A	B	C	E	F	G	P	T	A+B
HDM 140*	35	85	0	187	53	87		3/8" BSP	
HDM 140*	35	85	0	187	53	87		3/8" BSP	
HDM 11 P	51.3	28.6 x S + 128.6	28.6	180	57	66		3/8" BSP	
HDM 11 S	53.0	36 x S + 111	36	180	67	66		1/2" BSP	
HDM 18	60	40 x S + 115	40	216	72	73		1/2" BSP	
HDM 25	62	40 x S + 124	40	252	90	80		3/4" BSP	
SD 18	85	53 X S + 160	53	320	92	1		3/4" BSP	

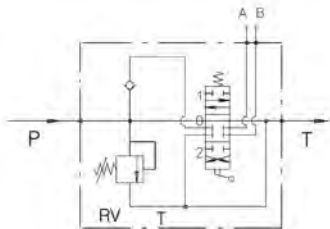
S = NUMBER OF SPOOL -1

* SINGLE MONOBLOCK VALVE ONLY

3/8" PORTS MAX FLOW 40L/MIN MONOBLOCK HDM140 SERIES C/W MAIN RELIEF VALVE

www.flowfitonline.com
TECH. DATA SHEET
DCV1

BUCHER
hydraulics

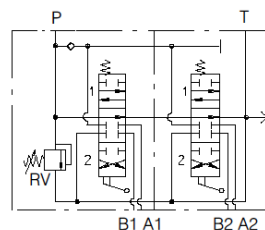


PART NO	DESCRIPTION	OPERATING PRESSURE BAR	NETT PRICE	
			£ STERLING	€ EUROS
200.0514.12.024	BUCHER HYDRAULIC 1 BANK, 3/8" BSP 40 L/MIN DOUBLE ACTING CYLINDER SPOOL 3 POSITIONS, SPRING RETURN HDM140 K02150A01	320	£43.25	€ 58.40
200.0514.12.047	BUCHER HYDRAULIC 1 BANK, 3/8" BSP 40 L/MIN SINGLE ACTING CYLINDER SPOOL 3 POSITION SPRING RETURN HDM140 K02150G01	320	£59.51	€ 80.34
200.0514.12.044	BUCHER HYDRAULIC 1 BANK, 3/8" BSP 40 L/MIN MOTOR SPOOL 3 POSITION DETENT HDM140 K02150C03	320	£59.51	€ 80.34

3/8" PORTS MAX FLOW 45L/MIN MONOBLOCK HDM11/P SERIES C/W MAIN RELIEF VALVE

www.flowfitonline.com
TECH. DATA SHEET
DCV2

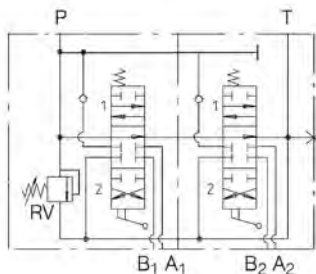
BUCHER
hydraulics



PART NO	DESCRIPTION	OPERATING PRESSURE BAR	NETT PRICE	
			£ STERLING	€ EUROS
200.0611.22.182	BUCHER HYDRAULIC 2 BANK, 3/8" BSP 45 L/MIN DOUBLE ACTING CYLINDER SPOOL 3 POSITIONS, SPRING RETURN HDM11P/2K04 150 A01 A01	400	£101.26	€ 136.71
200.0611.32.164	BUCHER HYDRAULIC 3 BANK, 3/8" BSP 45 L/MIN DOUBLE ACTING CYLINDER SPOOL 3 POSITIONS, SPRING RETURN HDM11P/3K04 150 A01 A01 A01	400	£142.81	€ 192.79
200.0611.42.124	BUCHER HYDRAULIC 4 BANK, 3/8" BSP 45 L/MIN DOUBLE ACTING CYLINDER SPOOL 3 POSITIONS, SPRING RETURN HDM11P/4K04 150 A01 A01 A01 A01	400	£172.65	€ 233.07
200.0611.52.078	BUCHER HYDRAULIC 5 BANK, 3/8" BSP 45 L/MIN DOUBLE ACTING CYLINDER SPOOL 3 POSITIONS, SPRING RETURN HDM11P/5K04 150 A01 A01 A01 A01 A01	400	£206.42	€ 278.67
200.0611.62.026	BUCHER HYDRAULIC 6 BANK, 3/8" BSP 45 L/MIN DOUBLE ACTING CYLINDER SPOOL 3 POSITIONS, SPRING RETURN HDM11P/6K04 150 A01 A01 A01 A01 A01 A01 6	400	£233.68	€ 315.47

1/2" PORTS MAX FLOW 45L/MIN MONOBLOCK HDM11/S SERIES C/W MAIN RELIEF VALVE

www.flowfitonline.com
TECH. DATA SHEET
DCV3

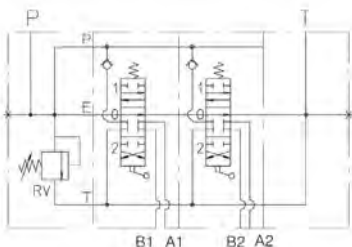


BUCHER
hydraulics

PART NO	DESCRIPTION	OPERATING PRESSURE BAR	NETT PRICE	
			£ STERLING	€ EUROS
200.0611.13.042	BUCHER HYDRAULIC 1 BANK, 1/2"BSP 45 L/MIN DOUBLE ACTING CYLINDER SPOOL 3 POSTIONS, SPRING RETURN HDM11S/1K03 150 A01	400	£81.79	€ 110.41
200.0611.23.043	BUCHER HYDRAULIC 2 BANK, 1/2"BSP 45 L/MIN DOUBLE ACTING CYLINDER SPOOL 3 POSTIONS, SPRING RETURN HDM11S/2K03 150 A01 A01	400	£125.93	€ 170.00
200.0611.33.044	BUCHER HYDRAULIC 3 BANK, 1/2"BSP 45 L/MIN DOUBLE ACTING CYLINDER SPOOL 3 POSTIONS, SPRING RETURN HDM11S/3K03 150 A01 A01 A01	400	£163.58	€ 220.83
200.0611.43.040	BUCHER HYDRAULIC 4 BANK, 1/2"BSP 45 L/MIN DOUBLE ACTING CYLINDER SPOOL 3 POSTIONS, SPRING RETURN HDM11S/4K03 150 A01 A01 A01 A01	400	£201.23	€ 271.66
200.0611.53.037	BUCHER HYDRAULIC 5 BANK, 1/2"BSP 45 L/MIN DOUBLE ACTING CYLINDER SPOOL 3 POSTIONS, SPRING RETURN HDM11S/5K03 150 A01 A01 A01 A01 A01 5 BANK	400	£244.06	€ 329.48
200.0611.63.015	BUCHER HYDRAULIC 6 BANK, 1/2"BSP 45 L/MIN DOUBLE ACTING CYLINDER SPOOL 3 POSTIONS, SPRING RETURN HDM11S/6K03 150 A01 A01 A01 A01 A01 A01	400	£258.35	€ 348.76

1/2" PORTS MAX FLOW 70L/MIN MONOBLOCK HDM 18 SERIES C/W MAIN RELIEF VALVE

www.flowfitonline.com
TECH. DATA SHEET
DCV4



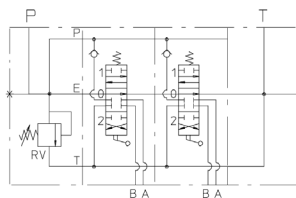
BUCHER
hydraulics

PART NO	DESCRIPTION	OPERATING PRESSURE BAR	NETT PRICE	
			£ STERLING	€ EUROS
200.0718.13.002	BUCHER HYDRAULIC 1 BANK, 1/2"BSP 70 L/MIN DOUBLE ACTING CYLINDER SPOOL 3 POSTIONS, SPRING RETURN HDM18/1K02 150/A08	400	£111.27	€ 141.32
200.0718.23.001	BUCHER HYDRAULIC 2 BANK, 1/2"BSP 70 L/MIN DOUBLE ACTING CYLINDER SPOOL 3 POSTIONS, SPRING RETURN HDM18/2K02 150/A08 A08	400	£181.74	€ 245.35
200.0718.33.008	BUCHER HYDRAULIC 3 BANK, 1/2"BSP 70 L/MIN DOUBLE ACTING CYLINDER SPOOL 3 POSTIONS, SPRING RETURN HDM18/3K02 150/A08 A08 A08	400	£253.15	€ 341.76
200.0718.43.007	BUCHER HYDRAULIC 4 BANK, 1/2"BSP 70 L/MIN DOUBLE ACTING CYLINDER SPOOL 3 POSTIONS, SPRING RETURN HDM18/4K02 150/A08 A08 A08 A08	400	£308.97	€ 417.11

3/4" PORTS MAX FLOW 100L/MIN MONOBLOCK HDM 25 SERIES C/W MAIN RELIEF VALVE

www.flowfitonline.com
TECH. DATA SHEET
DCV5

BUCHER
hydraulics

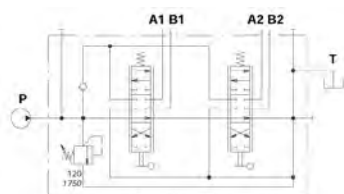


PART NO	DESCRIPTION	OPERATING PRESSURE BAR	NETT PRICE	
			£ STERLING	€ EUROS
200.0725.14.001	BUCHER HYDRAULIC 1 BANK, 3/4"BSP 100 L/MIN DOUBLE ACTING CYLINDER SPOOL 3 POSITIONS, SPRING RETURN HDM25/1K031 150/A01 L100	320	£164.87	€ 222.58
200.0725.24.001	BUCHER HYDRAULIC 2 BANK, 3/4"BSP 100 L/MIN DOUBLE ACTING CYLINDER SPOOL 3 POSITIONS, SPRING RETURN HDM25/2K031 150/A01/A01 L100	320	£296.00	€ 399.60

3/4" PORTS MAX FLOW 160L/MIN MONOBLOCK SD18 SERIES C/W MAIN RELIEF VALVE

www.flowfitonline.com
TECH. DATA SHEET
DCV6

walvoil
HYDRAULIC CONTROL SYSTEMS



Ex.: SD18/2-P(KG3-120)/18L/18/AET

PART NO	DESCRIPTION	OPERATING PRESSURE BAR	NETT PRICE	
			£ STERLING	€ EUROS
106111001	SD18/1-P(KG3)/18L/AET 1 BANK DOUBLE ACTING SPRING RETURN LEVER OPERATED	250	£369.37	€ 498.65
106211001	SD18/2-P(KG3)/18LX2/AET 2 BANK DOUBLE ACTING SPRING RETURN LEVER OPERATED	250	£545.05	€ 735.83
106311001	SD18/3-P(KG3)/18LX3/AET 3 BANK DOUBLE ACTING SPRING RETURN LEVER OPERATED	250	£737.11	€ 995.10
106411001	SD18/4-P(KG3)/18LX4/AET 4 BANK DOUBLE ACTING SPRING RETURN LEVER OPERATED	250	£904.63	€ 1,221.24
106511001	SD18/5-P(KG3)/18LX5/AET 5 BANK DOUBLE ACTING SPRING RETURN LEVER OPERATED	250	£1,085.23	€ 1,465.05
106611001	SD18/6-P(KG3)/18LX6/AET 6 BANK DOUBLE ACTING SPRING RETURN LEVER OPERATED	250	£1,307.50	€ 1,765.13

FOR SALES
& ADVICE
CALL US
**01584
876033**

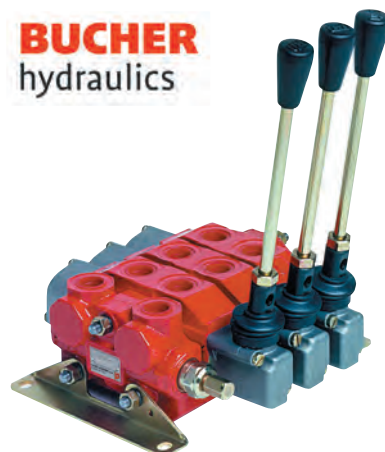
SLICE DIRECTIONAL CONTROL VALVES TYPE HDS

BUCHER
hydraulics

The HDS valve range represents a flexible unit construction, the elements of which may be combined into one valve unit as required.

The valves are available connected in parallel and in series circuits.

A typical valve unit comprises an inlet plate, the directional control valve sections and end plate. With all valves in neutral the flow returned to the tank (open centre). In addition high pressure carry over or closed centre circulation are available.



- Lever control
- Electro hydraulic on/off and proportional operation
- Open centre, closed centre and high pressure carryover
- Pilot operated check valves
- Priority flow control valves
- Shock, anticavitation and combined shock and anticavitation valves

TECHNICAL DATA		HDS 11	HDS 15	HDS 20	HDS 30	SD25
Number of spools		1-10	1-10	1-10	1-10	1-10
Flow rate	l/min	45	60	80	120	240
Inlet pressure max.	bar	320	320	320	320	315
Return pressure max.	bar	30	30	30	30	25
Fluid		Mineral oil to DIN 51524				
Operating temperature	°C	-20 to +80				
Viscosity range	mm ² /s	16 to 75				
Filtration	Micron	≤30				

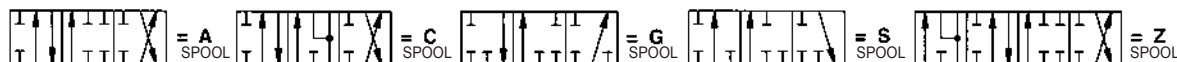
Directional valve

CONTROLS AVAILABLE

Lever / joystick for 2 valves / cable control / hydraulic or pn

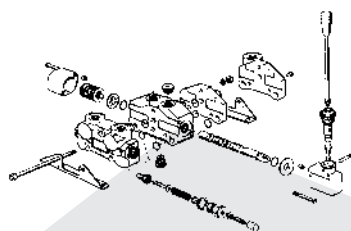
ELECTRO HYDRAULIC (ON/OFF) / ELECTRO PNEUMATIC PROPORTIONAL

SPOOLS AVAILABLE – PLUS MANY MORE



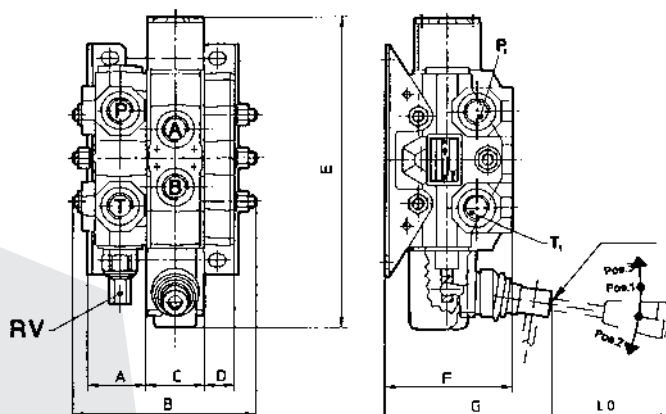
	A	B	C	D	E	F	G	P+T	A+B
HDS 11	40	31.8 x W + 101.6	31.8	40	171	75	122	3/8" BSP	
HDS 15	44	40 x W + 86	40	21	179	88	115	1/2" BSP	
HDS 20	40	40 x W + 100	40	40	252	106	121	3/4"	1/2" BSP
HDS 30	50	44 x W + 124	44	50	262	113	126	1"	3/4"
SD 25	N/A	62 x W + 173	N/A	62	356	N/A	137	P 1" T 1 1/4"	1"

W = Width of directional sections (max. 10 sections per control block)



LEVER LENGTHS – MM

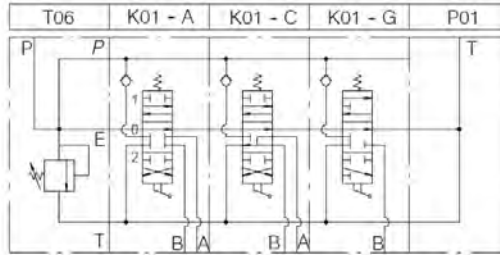
HDM 140	150	200	250	300	-
HDS 11	150	200	250	300	-
HDS 15	-	185	250	300	350
HDS 20	-	185	250	300	350
HDS 30	-	185	250	300	350
SD25	150	200	250	300	-



HDS11 SLICE VALVE 3/8" PORTS MAX FLOW 45L/MIN C/W MAIN RELIEF AND MOUNTING FEET.

www.flowfitonline.com
TECH. DATA SHEET
DCV7

BUCHER
hydraulics

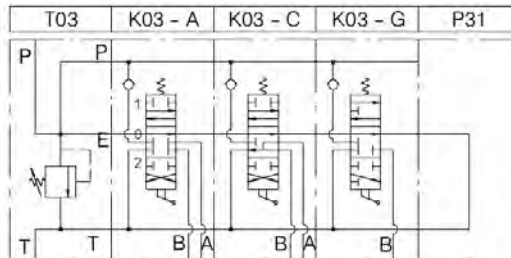


PART NO	DESCRIPTION	MAX FLOW L/MIN	OPERATING PRESSURE BAR	NETT PRICE	
				£ STERLING	€ EUROS
HDS11/1/STD	1 BANK DOUBLE ACTING SPRING RETURN LEVER OPERATED	45	320	£121.77	€ 147.28
HDS11/2/STD	2 BANK DOUBLE ACTING SPRING RETURN LEVER OPERATED	45	320	£184.68	€ 223.38
HDS11/3/STD	3 BANK DOUBLE ACTING SPRING RETURN LEVER OPERATED	45	320	£246.79	€ 298.50
HDS11/4/STD	4 BANK DOUBLE ACTING SPRING RETURN LEVER OPERATED	45	320	£308.90	€ 373.62
HDS11/5/STD	5 BANK DOUBLE ACTING SPRING RETURN LEVER OPERATED	45	320	£371.82	€ 449.72
HDS11/6 /STD	6 BANK DOUBLE ACTING SPRING RETURN LEVER OPERATED	45	320	£434.74	€ 525.83
HDS11/7/STD	7 BANK DOUBLE ACTING SPRING RETURN LEVER OPERATED	45	320	£496.84	€ 600.94
HDS11/8/STD	8 BANK DOUBLE ACTING SPRING RETURN LEVER OPERATED	45	320	£559.76	€ 677.05
HDS11/9/STD	9 BANK DOUBLE ACTING SPRING RETURN LEVER OPERATED	45	320	£622.70	€ 753.16
HDS11/10/STD	10 BANK DOUBLE ACTING SPRING RETURN LEVER OPERATED	45	320	£684.80	€ 828.27

HDS15 SLICE VALVE 1/2" PORTS MAX FLOW 60L/MIN C/W MAIN RELIEF AND MOUNTING FEET.

www.flowfitonline.com
TECH. DATA SHEET
DCV8

BUCHER
hydraulics

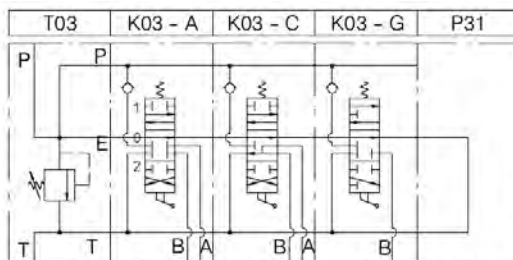


PART NO	DESCRIPTION	MAX FLOW L/MIN	OPERATING PRESSURE BAR	NETT PRICE	
				£ STERLING	€ EUROS
HDS15/1/STD	1 BANK DOUBLE ACTING SPRING RETURN LEVER OPERATED	60	320	£153.63	€ 207.40
HDS15/2/STD	2 BANK DOUBLE ACTING SPRING RETURN LEVER OPERATED	60	320	£232.08	€ 313.31
HDS15/3/STD	3 BANK DOUBLE ACTING SPRING RETURN LEVER OPERATED	60	320	£310.52	€ 419.20
HDS15/4/STD	4 BANK DOUBLE ACTING SPRING RETURN LEVER OPERATED	60	320	£466.62	€ 629.94
HDS15/5/STD	5 BANK DOUBLE ACTING SPRING RETURN LEVER OPERATED	60	320	£466.62	€ 629.94
HDS15/6/STD	6 BANK DOUBLE ACTING SPRING RETURN LEVER OPERATED	60	320	£545.06	€ 735.83
HDS15/7/STD	7 BANK DOUBLE ACTING SPRING RETURN LEVER OPERATED	60	320	£623.52	€ 841.75
HDS15/8/STD	8 BANK DOUBLE ACTING SPRING RETURN LEVER OPERATED	60	320	£701.96	€ 947.65
HDS15/9/STD	9 BANK DOUBLE ACTING SPRING RETURN LEVER OPERATED	60	320	£780.42	€ 1,053.57
HDS15/10/STD	10 BANK DOUBLE ACTING SPRING RETURN LEVER OPERATED	60	320	£858.05	€ 1,158.37

HDS20 SLICE VALVE 1/2" PORTS (A+B), 3/4" PORTS (P+T) MAX FLOW 80 L/MIN C/W MAIN RELIEF AND MOUNTING FEET.

www.flowfitonline.com
TECH. DATA SHEET
DCV9

BUCHER
hydraulics

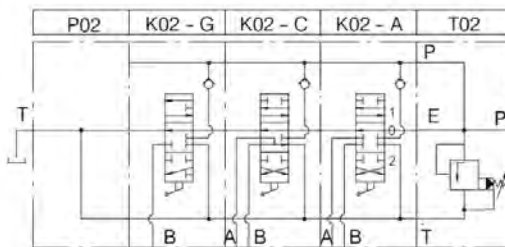


PART NO	DESCRIPTION	MAX FLOW L/MIN	OPERATING PRESSURE BAR	NETT PRICE	
				£ STERLING	€ EUROS
HDS20/1/STD	1 BANK DOUBLE ACTING SPRING RETURN LEVER OPERATED	80	320	£200.97	€ 271.31
HDS20/2/STD	2 BANK DOUBLE ACTING SPRING RETURN LEVER OPERATED	80	320	£296.64	€ 400.46
HDS20/3/STD	3 BANK DOUBLE ACTING SPRING RETURN LEVER OPERATED	80	320	£392.26	€ 529.53
HDS20/4/STD	4 BANK DOUBLE ACTING SPRING RETURN LEVER OPERATED	80	320	£487.86	€ 658.61
HDS20/5/STD	5 BANK DOUBLE ACTING SPRING RETURN LEVER OPERATED	80	320	£583.48	€ 787.70
HDS20/6/STD	6 BANK DOUBLE ACTING SPRING RETURN LEVER OPERATED	80	320	£679.07	€ 916.75
HDS20/7/STD	7 BANK DOUBLE ACTING SPRING RETURN LEVER OPERATED	80	320	£773.87	€ 1,044.73
HDS20/8/STD	8 BANK DOUBLE ACTING SPRING RETURN LEVER OPERATED	80	320	£876.02	€ 1,182.62
HDS20/9/STD	9 BANK DOUBLE ACTING SPRING RETURN LEVER OPERATED	80	320	£969.76	€ 1,309.18
HDS20/10/STD	10 BANK DOUBLE ACTING SPRING RETURN LEVER OPERATED	80	320	£1,058.37	€ 1,428.79

HDS30 SLICE VALVE 3/4" PORTS MAX FLOW 120L/MIN C/W MAIN RELIEF AND MOUNTING FEET.

www.flowfitonline.com
TECH. DATA SHEET
DCV10

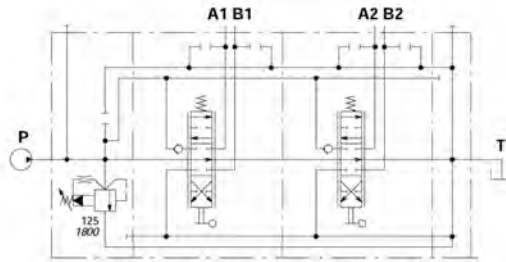
BUCHER
hydraulics



PART NO	DESCRIPTION	MAX FLOW L/MIN	OPERATING PRESSURE BAR	NETT PRICE	
				£ STERLING	€ EUROS
HDS30/1/STD	1 BANK DOUBLE ACTING SPRING RETURN LEVER OPERATED	120	320	£266.40	€ 359.64
HDS30/2/STD	2 BANK DOUBLE ACTING SPRING RETURN LEVER OPERATED	120	320	£375.87	€ 507.43
HDS30/3/STD	3 BANK DOUBLE ACTING SPRING RETURN LEVER OPERATED	120	320	£487.86	€ 658.61
HDS30/4/STD	4 BANK DOUBLE ACTING SPRING RETURN LEVER OPERATED	120	320	£594.09	€ 802.02
HDS30/5/STD	5 BANK DOUBLE ACTING SPRING RETURN LEVER OPERATED	120	320	£706.05	€ 953.16
HDS30/6/STD	6 BANK DOUBLE ACTING SPRING RETURN LEVER OPERATED	120	320	£819.64	€ 1,106.51
HDS30/7/STD	7 BANK DOUBLE ACTING SPRING RETURN LEVER OPERATED	120	320	£922.60	€ 1,245.51
HDS30/8/STD	8 BANK DOUBLE ACTING SPRING RETURN LEVER OPERATED	120	320	£1,034.55	€ 1,396.65
HDS30/9/STD	9 BANK DOUBLE ACTING SPRING RETURN LEVER OPERATED	120	320	£1,140.78	€ 1,540.06
HDS30/10/STD	10 BANK DOUBLE ACTING SPRING RETURN LEVER OPERATED	120	320	£1,250.29	€ 1,687.89

SD25 SLICE VALVE 1" PORTS MAX FLOW 240L/MIN C/W MAIN RELIEF VALVE AND MOUNTING FEET.

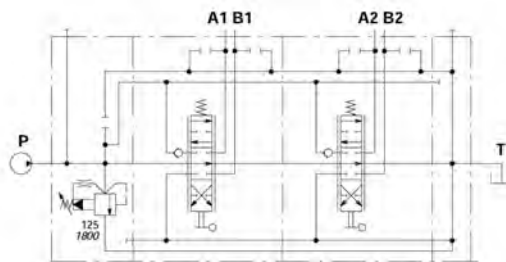
www.flowfitonline.com
TECH. DATA SHEET
DCV11



PART NO	DESCRIPTION	MAX FLOW L/MIN	OPERATING PRESSURE BAR	NETT PRICE	
				£ STERLING	€ EUROS
SD25/1/STD	1 BANK DOUBLE ACTING SPRING RETURN LEVER OPERATED	240	315	£758.35	€ 1,023.78
SD25/2/STD	2 BANK DOUBLE ACTING SPRING RETURN LEVER OPERATED	240	315	£1,074.10	€ 1,450.04
SD25/3/STD	3 BANK DOUBLE ACTING SPRING RETURN LEVER OPERATED	240	315	£1,648.45	€ 2,225.41
SD25/4/STD	4 BANK DOUBLE ACTING SPRING RETURN LEVER OPERATED	240	315	£1,706.28	€ 2,303.49
SD25/5/STD	5 BANK DOUBLE ACTING SPRING RETURN LEVER OPERATED	240	315	£2,022.54	€ 2,730.42
SD25/6/STD	6 BANK DOUBLE ACTING SPRING RETURN LEVER OPERATED	240	315	£2,340.41	€ 3,159.56
SD25/7/STD	7 BANK DOUBLE ACTING SPRING RETURN LEVER OPERATED	240	315	£2,658.30	€ 3,588.71
SD25/8/STD	8 BANK DOUBLE ACTING SPRING RETURN LEVER OPERATED	240	315	£2,976.20	€ 4,017.86
SD25/9/STD	9 BANK DOUBLE ACTING SPRING RETURN LEVER OPERATED	240	315	£3,293.27	€ 4,445.91
SD25/10/STD	10 BANK DOUBLE ACTING SPRING RETURN LEVER OPERATED	240	315	£3,610.33	€ 4,873.94

FLOW 250 SLICE VALVE 1" SERVICE PORTS MAX FLOW 250L/MIN C/W MAIN RELIEF AND MOUNTING FEET. INLET 1 1/4" AND OUTLET 1 1/2"

www.flowfitonline.com
TECH. DATA SHEET
DCV12



PART NO	DESCRIPTION	MAX FLOW L/MIN	OPERATING PRESSURE BAR	NETT PRICE	
				£ STERLING	€ EUROS
FLOW250/1/STD	1 BANK DOUBLE ACTING SPRING RETURN LEVER OPERATED	250	350	£446.58	€ 602.89
FLOW250/2/STD	2 BANK DOUBLE ACTING SPRING RETURN LEVER OPERATED	250	350	£629.63	€ 850.00
FLOW250/3/STD	3 BANK DOUBLE ACTING SPRING RETURN LEVER OPERATED	250	350	£820.48	€ 1,107.64
FLOW250/4/STD	4 BANK DOUBLE ACTING SPRING RETURN LEVER OPERATED	250	350	£1,010.01	€ 1,363.51
FLOW250/5/STD	5 BANK DOUBLE ACTING SPRING RETURN LEVER OPERATED	250	350	£1,200.84	€ 1,621.13
FLOW250/6/STD	6 BANK DOUBLE ACTING SPRING RETURN LEVER OPERATED	250	350	£1,391.68	€ 1,878.77
FLOW250/7/STD	7 BANK DOUBLE ACTING SPRING RETURN LEVER OPERATED	250	350	£1,583.81	€ 2,138.15
FLOW250/8/STD	8 BANK DOUBLE ACTING SPRING RETURN LEVER OPERATED	250	350	£1,774.65	€ 2,395.76
FLOW250/9/STD	9 BANK DOUBLE ACTING SPRING RETURN LEVER OPERATED	250	350	£1,966.78	€ 2,655.15
FLOW250/10/STD	10 BANK DOUBLE ACTING SPRING RETURN LEVER OPERATED	250	350	£2,157.61	€ 2,912.78

ROTARY HYDRAULIC OPERATED LEVER VALVES

All valves are double acting three position rotary control detent notched in the neutral position.

All valves have an integral main relief 30-280BAR/435PSI - 4060PSI.

Max operating pressure - see below.

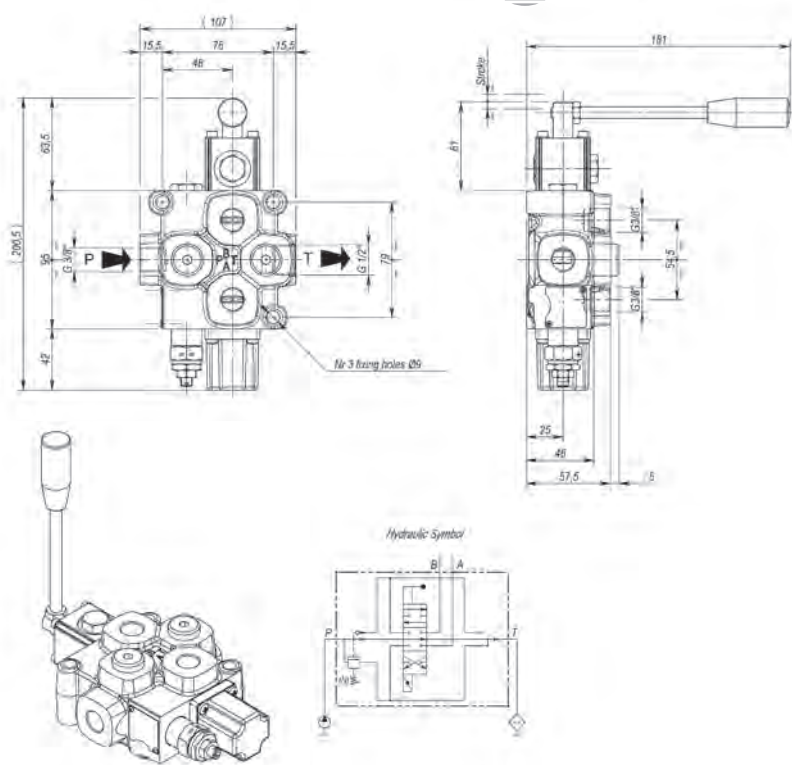
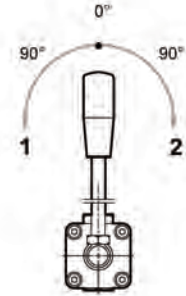
Ports 3/8" - 1/2" and 3/4" BSP available.

Painted - Primer Expo Inver No1 and finished with black paint castalux CAS - RAL 9005.

These valves are fully marinated and will outlive an agricultural market valve by many years when used in a sea water environment.

The rotary versions give good speed control in conjunction with excellent spool metering.

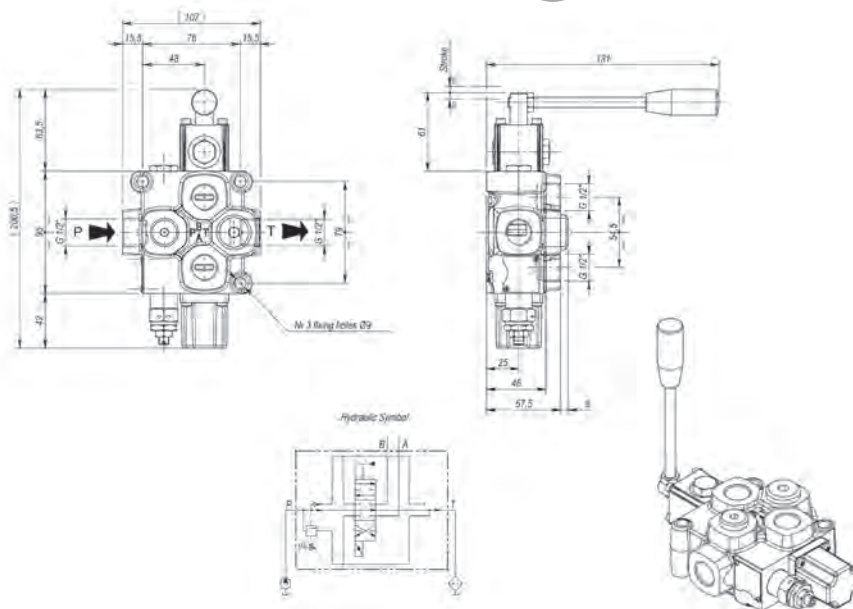
Ideal for winch applications and built to withstand harsh on-deck conditions.



PART NO	DESCRIPTION	FLOW L/MIN	OPERATION PRESSURE BAR	PORT SIZE BSP		NETT PRICE	
				P, A + B	T	£ STERLING	€ EUROS
ZZ002054	Q25 F1S(N) - 103/RTLS - F3D	40	350	3/8"	3/8"	£128.00	€ 172.80



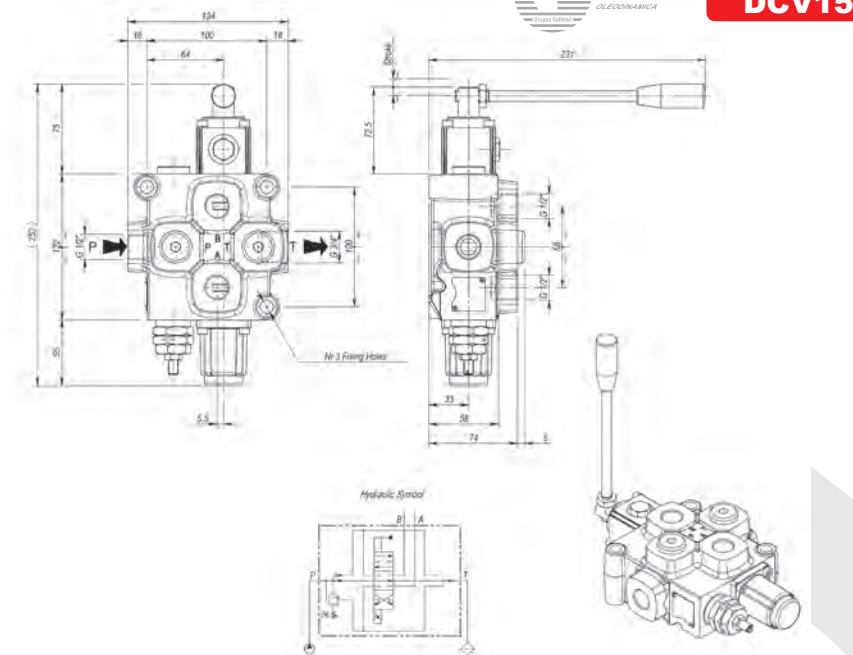
www.flowfitonline.com
TECH. DATA SHEET
DCV14



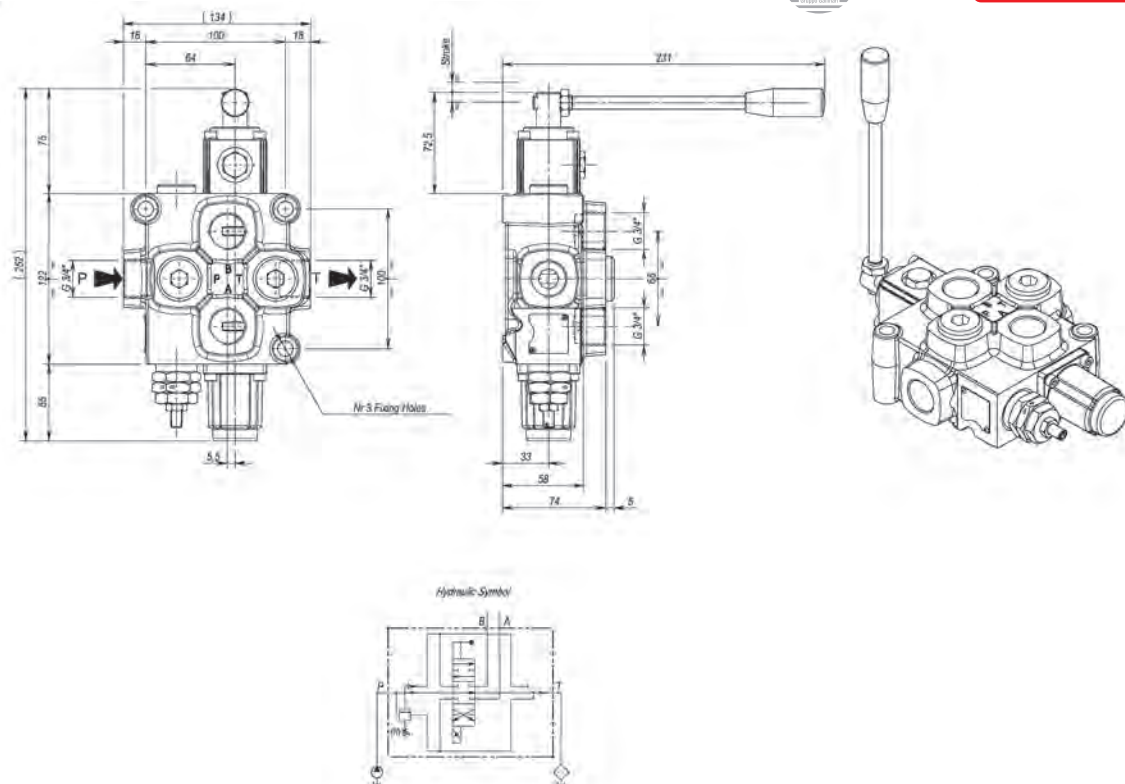
PART NO	DESCRIPTION	FLOW L/MIN	OPERATION PRESSURE BAR	PORT SIZE BSP		NETT PRICE	
				P, A + B	T	£ STERLING	€ EUROS
ZZ001867	Q45 F1S(N) - 103/RTLS - F3D	60	350	1/2"	1/2"	£118.14	€ 159.49



www.flowfitonline.com
TECH. DATA SHEET
DCV15



PART NO	DESCRIPTION	FLOW L/MIN	OPERATION PRESSURE BAR	PORT SIZE BSP		NETT PRICE	
				P, A + B	T	£ STERLING	€ EUROS
ZZ002055	Q75 F1S(N) - 103/RTLS - F3D	90	350	1/2"	3/4"	£188.24	€ 254.13



PART NO	DESCRIPTION	FLOW L/MIN	OPERATION PRESSURE BAR	PORT SIZE BSP		NETT PRICE	
				P, A + B	T	£ STERLING	€ EUROS
ZZ002056	Q95 F1S(N) - 103/RTLS - F3D	120	350	3/4"	3/4"	£192.79	€ 260.27

MONOBLOCK CONTROL VALVE C/W FLOW CONTROL

Ideal for control of hydraulic motors and hydraulic cylinders.

The valve is double acting c/w 3 position detent kit.

Valves have an integral main relief 30-280BAR/435PSI - 4060PSI.

Max operating pressure 300 BAR

Ports P, A, B and T 1/2" BSP

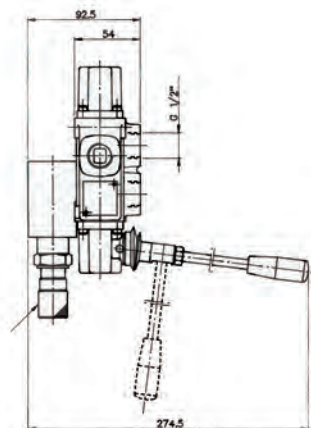
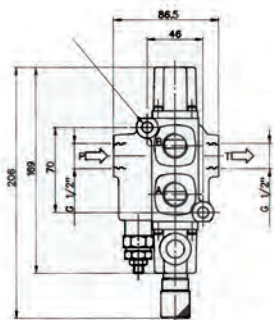
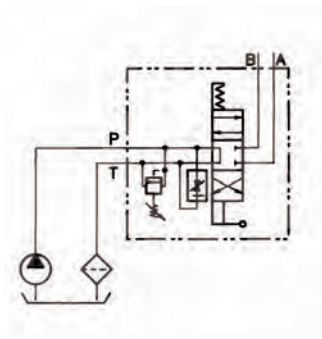
Max input flow 50L/Min

The pressure compensated flow control will control the speed of a hydraulic motor or hydraulic cylinder.

All residual flow will return down the tank line.



www.flowfitonline.com
TECH. DATA SHEET
DCV17



PART NO	DESCRIPTION	FLOW L/MIN	OPERATION PRESSURE BAR	PORT SIZE BSP		NETT PRICE	
				P, A + B	T	£ STERLING	€ EUROS
ZZ002059	Q35 F7S(N) - 103/A1/R3/RPA Double acting spool valves C/W 3 position detent lever control C/W pressure compensated flow control	50	300	1/2"	1/2"	£149.30	€ 201.55

HYDRAULIC HOSE-REEL VALVE LEVER OPERATED C/W FLOW CONTROL

GENERAL

This compact valve has been specifically designed to operate hose and cable reels.

The valve is fitted with an adjustable priority flow control on the inlet section, this is pressure compensated, the excess flow returns to tank.

The main relief is adjustable from 96 - 210 bar, other spring settings available upon request.

The lever operating spool slice has 4 positions.

The desired speed is selected using the speed control knob then the direction of the flow is selected using the spring centre lever, you can select forward, neutral or reverse. The lever can also be detented into a fourth position - commonly known as 'floating fourth', the fourth position allows the reel to 'free wheel' enabling the hose to be pulled off by hand. In the neutral position the reel is locked hydraulically.

Features

- Very compact
- Light weight
- Variable speed
- Pressure compensated maintaining constant speed irrespective of load or flow
- Adjustable relief valve
- Quality floating fourth kit.



www.flowfitonline.com
TECH. DATA SHEET
DCV18

BUCHER
hydraulics

PART NO	DESCRIPTION	FLOW L/MIN	MAX INTERMITTENT PEAK PRESSURE BAR	PORT SIZE BSP		NETT PRICE	
				P, A + B	T		
ZZ001864	HDS11/2(15)T09/P04/K90 - 2 /K09Z04L100	45	320	3/8"	3/8"	£254.45	€ 343.50
ZZ001865	HDS15/2(15)T03/P31/K90 - 3 /K03Z136L100	60	320	1/2"	1/2"	£316.76	€ 427.64

HYDRAULIC HOSE-REEL VALVE WITHOUT FLOW CONTROL

These compact valves have been specifically designed to operate hose and cable reels. Each valve comes complete with a main relief valve fully adjustable from 96 - 210 bar, other spring settings available upon request.

The lever operating spool slice has 4 positions.

The direction of flow is selected using the spring centred lever valve, select forward, neutral or reverse. The lever can also be detented into a fourth position - commonly known as a "floating fourth", the fourth position allows the reel to "free wheel" enabling the hose to be pulled off by hand. In the neutral position the reel is locked hydraulically and the pump will unload the flow to tank.



www.flowfitonline.com
TECH. DATA SHEET
DCV19

BUCHER
hydraulics

MONOBLOCK VALVE

PART NO	DESCRIPTION	FLOW L/MIN	MAX INTERMITTENT PEAK PRESSURE BAR	PORT SIZE BSP		NETT PRICE	
				P, A + B	T	£ STERLING	€ EUROS
ZZ001868	HDM140/1(15)K02/Z04L100 C/W HANDLEVER	40	320	3/8"	3/8"	£77.90	€ 105.17
ZZ001869	HDM115/1(15)KC3/Z04L100 C/W HANDLEVER	45	400	1/2"	1/2"	£130.47	€ 176.14
ZZ000208	HDM18/1(15)K02/Z136L100 C/W HANDLEVER	70	400	1/2"	1/2"	£151.24	€ 204.17
ZZ001881	HDM25/1(15)K03/Z128L100 C/W HANDLEVER	100	320	3/4"	3/4"	£184.35	€ 248.86



www.flowfitonline.com
TECH. DATA SHEET
DCV20

BUCHER
hydraulics

SLICE VALVE

PART NO	DESCRIPTION	FLOW L/MIN	MAX INTERMITTENT PEAK PRESSURE BAR	PORT SIZE BSP		NETT PRICE	
				P, A + B	T	£ STERLING	€ EUROS
ZZ001870	HDS11/1(15)T09P04K04204 L100 C/W HAND LEVER	45	320	3/8"	3/8"	£143.45	€ 193.65
ZZ001871	HDS15/1(15)T03P31K03Z136 L100 C/W HANDLEVER	60	320	1/2"	1/2"	£177.21	€ 239.23
ZZ001882	HDS20/1(15)T02P021K02/Z128 L100 C/W HANDLEVER	80	320	3/4", 1/2"+1/2"	3/4"	£216.80	€ 292.68
ZZ001883	HDS30/1(15)T02P021K02Z125 L100 C/W HANDLEVER	100	320	3/4"	3/4"	£294.96	€ 398.20

SOLENOID DIVERTER VALVES

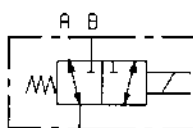


DFE052
3 WAY
3/8" BSP

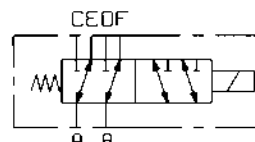
DFE20
3 WAY
3/4" BSP

DFE10
6 WAY • 1/2" BSP

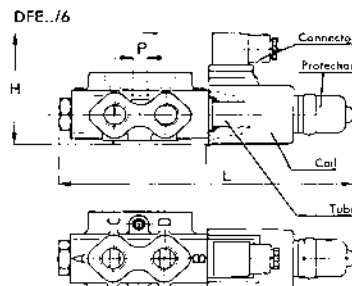
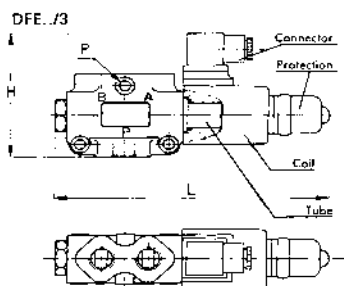
Diverters are an added extra facility to the directional control valve when it is needed for a sequence of operations, such as a safety operation or to control a selected actuator.



3 WAY



6 WAY



Note: for DFE 10-DFE 20 units the 2 way version is obtained by plugging A or B port of a DFE.../3

Type	H		L		O		P	P	Weight		Details for Y drain connection
	mm	in	mm	in	mm	in			Kg	lb	
DFE 052/3	84	3.30	182	7.16	23	0.90	6,5	0.25	1,7	3,7	
DFE 052/6	84	3.30	197	7.75	23	0.90			1,9	4,2	
DFE 10/3	105	4.13	215	8.46	24	0.94	8,5	0.33	2,9	6,4	
DFE 10/6	103	4.05	242	9.52	24	0.94			3,7	8,1	
DFE 20/3	114	4.48	241	9.48	17	0.67	10,5	0.41	5,2	11,5	
DFE 20/6	103	4.05	276	10.86	17	0.67			5,3	11,7	

3 WAY SOLENOID DIVERTER VALVES

PART NUMBER	PORT SIZE BSP	TYPE	VOLTAGE	NOMINAL FLOW L/MIN	MAX PRESSURE STANDARD (BAR)	MAX PRESSURE WITH DRAIN (BAR)	WEIGHT (KG)	NETT PRICE	
								£ STERLING	€ EUROS
12A240020	3/8"	DFE052	12V DC	30	160	250	1.6	£167.30	€ 225.85
12A240040	3/8"	DFE052	24V DC	30	160	250	1.6	£167.30	€ 225.85
12A440013	1/2"	DFE10	12V DC	60	160	250	2.9	£220.38	€ 297.52
12A440025	1/2"	DFE10	24V DC	60	160	250	2.9	£220.51	€ 297.70
12A640014	3/4"	DFE20	12V DC	110	160	250	4.2	£298.70	€ 403.24
12A640026	3/4"	DFE20	24V DC	110	160	250	4.2	£298.70	€ 403.24

6 WAY SOLENOID DIVERTER VALVES

PART NUMBER	PORT SIZE BSP	TYPE	VOLTAGE	NOMINAL FLOW L/MIN	MAX PRESSURE STANDARD (BAR)	MAX PRESSURE WITH DRAIN (BAR)	WEIGHT (KG)	NETT PRICE	
								£ STERLING	€ EUROS
12A270033	3/8"	DFE052	12V DC	30	160	250	2	£189.77	€ 256.18
12A270023	3/8"	DFE052	24V DC	30	160	250	2	£189.77	€ 256.18
12A470013	1/2"	DFE10	12V DC	60	160	250	3.7	£232.62	€ 314.03
12A470025	1/2"	DFE10	24V DC	60	160	250	3.7	£232.62	€ 314.03
12A670014	3/4"	DFE20	12V DC	110	160	250	6.3	£327.48	€ 442.10
12A670026	3/4"	DFE20	24V DC	110	160	250	6.3	£327.48	€ 442.10

OPTIONAL EXTRAS * Connect to tank to give max. pressure of 250 bar.

PART NUMBER	DESCRIPTION	NETT PRICE	
		£ STERLING	€ EUROS
2X1001010	TYPE CO2 (ISO4400) 12/24V DC HERSCHMANN CONNECTOR	£3.16	€ 4.28
5GIU001	DRAIN CONNECTOR TO SUIT DFE052	£9.57	€ 12.92
5GIU004	DRAIN CONNECTOR TO SUIT DFE10	£11.15	€ 15.04
5GIU007	DRAIN CONNECTOR TO SUIT DFE20	£13.54	€ 18.28

LEVER OPERATED DIVERTER VALVES 'DF' SERIES



www.flowfitonline.com
TECH. DATA SHEET
DCV21

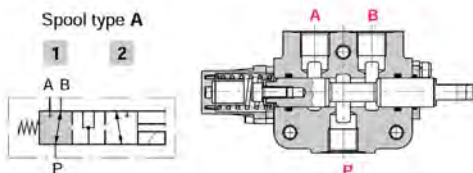
DF5/3A/17L



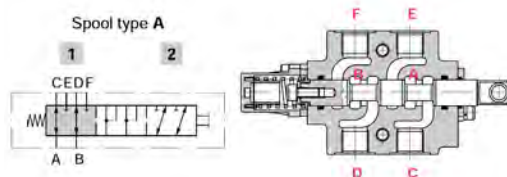
	DF5	DF10	DF20	DF25
N. of available ways	2-3-6	2-3-6	2-3-6	3
Nominal flow rating	60 l/min	90 l/min	140 l/min	280 l/min
Operating pressure (maximum)	315 bar 4600 psi	315 bar 4600 psi	315 bar 4600 psi	315 bar 4600 psi
Internal leakage A(B)→T	<i>Δp=100 bar 1450 psi with fluid and valve at 40°C</i>	5 cm ³ /min 0.31 in ³ /min	5 cm ³ /min 0.31 in ³ /min	8 cm ³ /min 0.49 in ³ /min
Hydraulic fluid	Mineral base oil			
Fluid temperature	with NBR seals with FPM seals		from -20°C to 80°C from -20°C to 100°C	
Viscosity	operating range		from 15 to 75 mm ² /s - from 15 to 75 cSt	
	minimum		12 mm ² /s - 12 cSt	
	maximum		400 mm ² /s - 400 cSt	
Max. level of contamination			-19/16 - ISO 4406	
Ambient temperature for working conditions	with mechanical control		from -40°C to 60°C	
	with hydraulic and pneumatic controls		from -30°C to 60°C	
	with electric controls		from -20°C to 50°C	

3 WAY

It's possible to obtain 2 Way diverter valve plugging port A or B

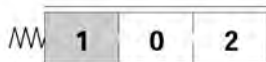


6 WAY



WITH SPRING RETURN

17 KIT



WITH DETENT

12 KIT Detent in positions 1 and 2.



PART NUMBER	DESCRIPTION - LEVER OPERATED	PORT SIZE BSP	FLOW RATE L/ MIN	MAX. PRESS. BAR	NETT PRICE	
					£ STERLING	€ EUROS
122052040	DF5/3A/12/L 3 PORT 2 POSITION DETENT	3/8"	60	315	£128.63	€ 173.65
122054040	DF5/3A/17/L 3 PORT 2 POSITION SPRING CONTROL BIAS TO 'B' PORT	3/8"	60	315	£99.04	€ 133.70
124052040	DF10/3A/12/L 3 PORT 2 POSITION DETENT	1/2"	90	315	£146.25	€ 197.45
124054040	DF10/3A/17/L 3 PORT 2 POSITION SPRING CONTROL BIAS TO 'B' PORT	1/2"	90	315	£107.81	€ 145.54
126052040	DF20/3A/12/L 3 PORT 2 POSITION DETENT	3/4"	140	315	£206.00	€ 278.10
126054040	DF20/3A/17/L 3 PORT 2 POSITION SPRING CONTROL BIAS TO 'B' PORT	3/4"	140	315	£189.92	€ 256.39
127052040	DF25/3A/12/L 3 PORT 2 POSITION DETENT	1"	280	315	£321.62	€ 434.19
127054040	DF25/3A/17/L 3 PORT 2 POSITION SPRING CONTROL BIAS TO 'B' PORT	1"	280	315	£301.72	€ 407.32
122082040	DF5/6A/12/L 6 PORT 2 POSITION DETENT	3/8"	60	315	£153.11	€ 206.70
122084040	DF5/6A/17/L 6 PORT 2 POSITION SPRING CONTROL BIAS TO 'B' PORT	3/8"	60	315	£120.98	€ 163.33
124082040	DF10/6A/12/L 6 PORT 2 POSITION DETENT	1/2"	90	315	£167.70	€ 226.40
124084040	DF10/6A/17/L 6 PORT 2 POSITION SPRING CONTROL BIAS TO 'B' PORT	1/2"	90	315	£154.68	€ 208.82
126082040	DF20/6A/12/L 6 PORT 2 POSITION DETENT	3/4"	140	315	£228.97	€ 309.11
126084040	DF20/6A/17/L 6 PORT 2 POSITION SPRING CONTROL BIAS TO 'B' PORT	3/4"	140	315	£212.88	€ 287.39

MONOBLOCK DIRECTIONAL CONTROL VALVES



- High technical performances granting larger application range.
- Special high resistance cast-iron body, suitable for high working pressures.
- Nickel-plated offering granting long working life under high pressure conditions (see attached scheme).
- Standard circuit in parallel grants simultaneous operations, and due to negative overlaps and dedicate metering, there is proportional movement at the working ports.
- Minimal internal leakages.
- Interchangeability of the spools also with the ones of the sectional valves with "parallel" or "single" scheme
- Possibility to reverse the control side, turning the spool of 180° permits unication, versatility and low value of some parts in stock.
- Free movement version "Y shape" allows high oil flow with low pressure drops, in relation with the small dimensions of the control valves.
- Above features not valid for Q35 having positive overlap. The Q35 spools are interchangeable.

NOTES FOR DIRECTIONAL CONTROL VALVES ASSEMBLY

- The three feet of the valve must always and perfectly rest on a 180° degree at surface.
- No conical nipples with 1/8" C thread must be used.
- Before painting the control valve, do not use diluents or any products that could damage rubber parts.

	Q35	Q15	GMV15	Q25	Q45	Q65	Q75	Q95
Working sections maximum	1	1	4	8	1	6	6	
Oil temperature range	-30 ÷ 80 °C							
Recommended oil temperature	30° ÷ 60 °C							
Recommended filtration	26/23µm ISO DIS 4406							
Hydraulic fluid	Mineral oil							
Viscosity	10 ÷ 400 mm ² /s							

		Q35		Q15		GMV15		Q25		Q45		Q65		Q75		Q95																				
		(4.1)	(2.6)					(6.6)	(7.5)	(12.6)	(12.6)			(16.8)	(16.8)	(22.9)	(22.9)	(27.3)	(27.3)	(32.0)	(32.6)	(22.3)	(16.6)	(18.3)	(40.4)											
Weight (lbs)	1 Working section	1.85	1.20	—	—	—	—	3.00	3.40	5.70	5.70	—	—	—	—	—	—	—	—	—	—	—	—	—	—	—	—	—	—	—	—	—	—			
	2 Working sections	—	—	2.50	—	—	—	4.50	—	7.60	7.60	—	—	—	—	—	—	—	—	—	—	—	—	—	—	—	—	—	—	—	—	—	—			
	3 Working sections	—	—	3.15	—	—	—	5.60	—	10.40	10.40	—	—	—	—	—	—	—	—	—	—	—	—	—	—	—	—	—	—	—	—	—	—	—	—	
	4 Working sections	—	—	3.80	—	—	—	7.30	—	12.40	12.40	—	—	—	—	—	—	—	—	—	—	—	—	—	—	—	—	—	—	—	—	—	—	—	—	
	5 Working sections	—	—	—	—	—	—	8.90	—	14.50	14.8	—	—	—	—	—	—	—	—	—	—	—	—	—	—	—	—	—	—	—	—	—	—	—	—	
	6 Working sections	—	—	—	—	—	—	10.1	—	16.60	18.3	—	—	—	—	—	—	—	—	—	—	—	—	—	—	—	—	—	—	—	—	—	—	—	—	—
	7 Working sections	—	—	—	—	—	—	11.0	—	—	—	—	—	—	—	—	—	—	—	—	—	—	—	—	—	—	—	—	—	—	—	—	—	—	—	—
	8 Working sections	—	—	—	—	—	—	13.6	—	—	—	—	—	—	—	—	—	—	—	—	—	—	—	—	—	—	—	—	—	—	—	—	—	—	—	—

Max working pressure (PSI)	from 1 up to 2 sections	300 (4350)	250 (3625)	280 (4060)	350 (5075)	350 (5075)	350 (5075)	350 (5075)
	3 sections	—	—	280 (4060)	320 (4640)	—	300 (4350)	300 (4350)
	from 4 up to 8 sections	—	—	280 (4060)	300 (4350)	—	270 (3915)	270 (3915)
Max back pressure (PSI)	25 (363)							
On request, 1 or 2 section monoblock valve only, max back pressure allowable is 2610 PSI (indicate the letter "S" at the end of code)	•	—	—	•	•	—	—	—

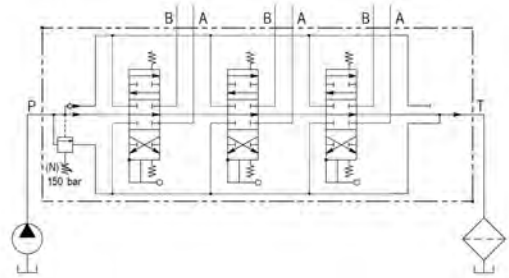
1/4" MONOBLOCK CONTROL VALVES GALTECH UP TO 20 L/MIN



www.flowfitonline.com
TECH. DATA SHEET
DCV22



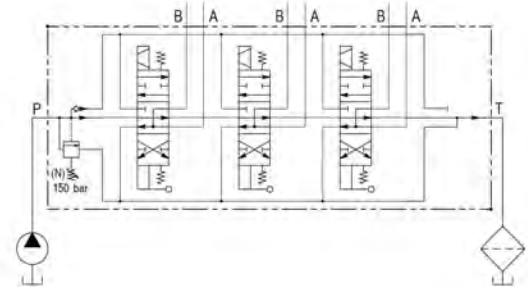
Q15/GMV15 SERIES



PART NO	DESCRIPTION	MAX PRESSURE BAR	NETT PRICE	
			£ STERLING	€ EUROS
015010103001000	Galtech Q15 hydraulic 1 bank, 1/4" BSP 20 l/min double acting cylinder spool 3 positions, spring return	250	£53.46	€ 72.18
ZZ006199	Galtech Q15 hydraulic 1 bank, 1/4" BSP 20 l/min single acting cylinder spool 3 position spring return	250	£53.46	€ 72.18
ZZ006197	Galtech Q15 hydraulic 1 bank 1/4" BSP 20 l/min double acting motor spool, 3 position detent spring return	250	£53.46	€ 72.18
ZZ006110	Galtech GMV15 hydraulic 2 bank, 1/4" BSP 20 l/min double acting cylinder spool 3 positions, spring return	280	£81.43	€ 109.93
ZZ006111	Galtech GMV15 hydraulic 3 bank, 1/4" BSP 20 l/min double acting cylinder spool 3 positions, spring return	280	£107.21	€ 144.73
015040103001000	Galtech GMV15 hydraulic 4 bank, 1/4" BSP 20 l/min double acting cylinder spool 3 positions, spring return	280	£134.68	€ 181.82



Q15/GMV15 SERIES

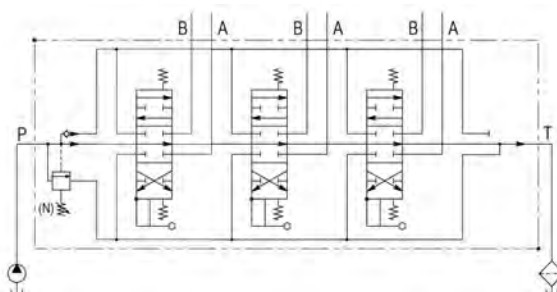


PART NO	DESCRIPTION	MAX PRESSURE BAR	NETT PRICE	
			£ STERLING	€ EUROS
ZZ006112	Galtech Q15 hydraulic 1 bank 1/4" BSP 20 l/min double acting cylinder spool 3 positions, spring return with 12VDC, electro solenoid control c/w manual over-ride.	250	£176.84	€ 238.73
ZZ006207	Galtech Q15 hydraulic 1 bank 1/4" BSP 20 l/min double acting motor spool 3 positions, spring return with 12VDC, electro solenoid control c/w manual over-ride.	250	£176.84	€ 238.73
ZZ006200	Galtech Q15 hydraulic 1 bank 1/4" BSP 20 l/min double acting cylinder spool 3 positions, spring return with 24VDC, electro solenoid control c/w manual over-ride.	250	£176.84	€ 238.73
ZZ006208	Galtech Q15 hydraulic 1 bank 1/4" BSP 20 l/min double acting motor spool 3 positions, spring return with 24VDC, electro solenoid control c/w manual over-ride.	250	£176.84	€ 238.73
ZZ006113	Galtech GMV15 hydraulic 2 bank 1/4" BSP 20 l/min double acting cylinder spool 3 positions, spring return with 12VDC, electro solenoid control c/w manual over-ride.	280	£328.19	€ 443.06
ZZ006203	Galtech GMV15 hydraulic 2 bank 1/4" BSP 20 l/min double acting motor spool 3 positions, spring return with 12VDC, electro solenoid control c/w manual over-ride.	280	£328.19	€ 443.06
ZZ006201	Galtech GMV15 hydraulic 2 bank 1/4" BSP 20 l/min double acting cylinder spool 3 positions, spring return with 24VDC, electro solenoid control c/w manual over-ride.	280	£328.19	€ 443.06
ZZ006204	Galtech GMV15 hydraulic 2 bank 1/4" BSP 20 l/min double acting motor spool 3 positions, spring return with 24VDC, electro solenoid control c/w manual over-ride.	280	£328.19	€ 443.06
ZZ006114	Galtech GMV15 hydraulic 3 bank 1/4" BSP 20 l/min double acting cylinder spool 3 positions, spring return with 12VDC, electro solenoid control c/w manual over-ride.	280	£477.35	€ 644.43
ZZ006205	Galtech GMV15 hydraulic 3 bank 1/4" BSP 20 l/min double acting motor spool 3 positions, spring return with 12VDC, electro solenoid control c/w manual over-ride.	280	£477.35	€ 644.43
ZZ006202	Galtech GMV15 hydraulic 3 bank 1/4" BSP 20 l/min double acting cylinder spool 3 positions, spring return with 24VDC, electro solenoid control c/w manual over-ride.	280	£477.35	€ 644.43
ZZ006206	Galtech GMV15 hydraulic 3 bank 1/4" BSP 20 l/min double acting motor spool 3 positions, spring return with 24VDC, electro solenoid control c/w manual over-ride.	280	£477.35	€ 644.43

3/8" MONOBLOCK CONTROL VALVES GALTECH UP TO 40 L/MIN



www.flowfitonline.com
TECH. DATA SHEET
DCV22

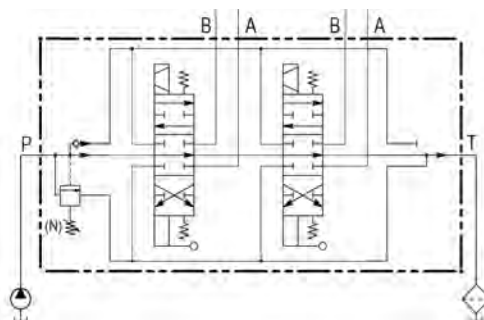


Q25 SERIES

PART NO	DESCRIPTION	MAX PRESSURE BAR	NETT PRICE	
			£ STERLING	€ EUROS
ZZ006115	Galtech Q25 hydraulic 1 bank, 3/8"BSP 40 l/min double acting cylinder spool 3 positions, spring return	350	£53.68	€ 72.47
ZZ006116	Galtech Q25 hydraulic 2 bank, 3/8"BSP 40 l/min double acting cylinder spool 3 positions, spring return	350	£81.43	€ 109.93
ZZ006117	Galtech Q25 hydraulic 3 bank, 3/8"BSP 40 l/min double acting cylinder spool 3 positions, spring return	320	£107.21	€ 144.73
025040103001000	Galtech Q25 hydraulic 4 bank, 3/8"BSP 40 l/min double acting cylinder spool 3 positions, spring return	300	£134.68	€ 181.82
025050103001000	Galtech Q25 hydraulic 5 bank, 3/8" BSP 40 l/min double acting cylinder spool 3 positions, spring return	300	£165.96	€ 224.05
025060103001000	Galtech Q25 hydraulic 6 bank, 3/8"BSP 40 l/min double acting cylinder spool 3 positions, spring return	300	£197.25	€ 266.28
025070103001000	Galtech Q25 hydraulic 7 bank, 3/8"BSP 40 l/min double acting cylinder spool 3 positions, spring return	300	£228.07	€ 307.90
025080103001000	Galtech Q25 hydraulic 8 bank, 3/8" BSP 40 l/min double acting cylinder spool 3 positions, spring return	300	£258.92	€ 349.54



Q25 SERIES

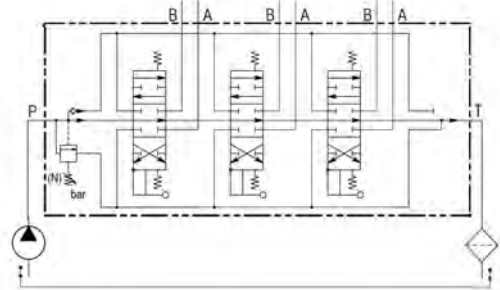


PART NO	DESCRIPTION	MAX PRESSURE BAR	NETT PRICE	
			£ STERLING	€ EUROS
ZZ006118	Galtech Q25 hydraulic 1 bank 3/8" BSP 40 l/min double acting cylinder spool 3 positions, spring return with 12VDC, electro solenoid control c/w manual over-ride.	350	£177.23	€ 239.26
ZZ006231	Galtech Q25 hydraulic 1 bank 3/8" BSP 40 l/min double acting cylinder spool 3 positions, spring return with 24VDC, electro solenoid control c/w manual over-ride.	350	£177.23	€ 239.26
ZZ006119	Galtech Q25 hydraulic 2 bank 3/8" BSP 40 l/min double acting cylinder spool 3 positions, spring return with 12VDC, electro solenoid control c/w manual over-ride.	350	£328.19	€ 443.06
ZZ006232	Galtech Q25 hydraulic 2 bank 3/8" BSP 40 l/min double acting cylinder spool 3 positions, spring return with 24VDC, electro solenoid control c/w manual over-ride.	350	£328.19	€ 443.06
ZZ006120	Galtech Q25 hydraulic 3 bank 3/8" BSP 40 l/min double acting cylinder spool 3 positions, spring return with 12VDC, electro solenoid control c/w manual over-ride.	320	£477.35	€ 644.43
ZZ006233	Galtech Q25 hydraulic 3 bank 3/8" BSP 40 l/min double acting cylinder spool 3 positions, spring return with 24VDC, electro solenoid control c/w manual over-ride.	320	£477.35	€ 644.43

1/2" MONOBLOCK CONTROL VALVES GALTECH UP TO 90 L/MIN



www.flowfitonline.com
TECH. DATA SHEET
DCV22

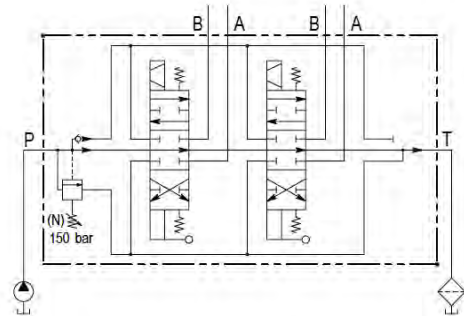


Q75 SERIES

PART NO	DESCRIPTION	MAX PRESSURE BAR	NETT PRICE	
			£ STERLING	€ EUROS
055010103001000	Galtech Q75 hydraulic 1 bank, 1/2"BSP 90 l/min double acting cylinder spool 3 position, spring return	350	£81.43	€ 109.93
055020103001000	Galtech Q75 hydraulic 2 bank, 1/2"BSP 90 l/min double acting cylinder spool 3 position, spring return	350	£112.05	€ 151.26
055010303001000	Galtech Q75 hydraulic 3 bank, 1/2"BSP 90 l/min double acting cylinder spool 3 position, spring return	300	£152.99	€ 206.54
055040103001000	Galtech Q75 hydraulic 4 bank, 1/2"BSP 90 l/min double acting cylinder spool 3 position, spring return	270	£191.35	€ 258.33
055050103001000	Galtech Q75 hydraulic 5 bank, 1/2"BSP 90 l/min double acting cylinder spool 3 position, spring return	270	£231.70	€ 312.80
055060103001000	Galtech Q75 hydraulic 6 bank, 1/2"BSP 90 l/min double acting cylinder spool 3 position, spring return	270	£240.93	€ 325.25



Q75 SERIES

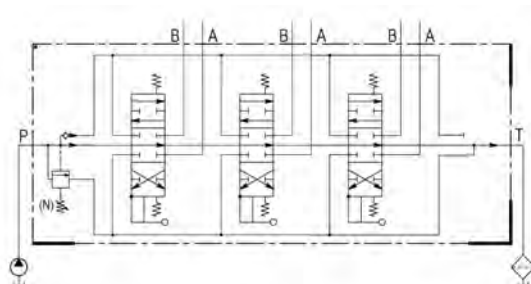


PART NO	DESCRIPTION	MAX PRESSURE BAR	NETT PRICE	
			£ STERLING	€ EUROS
ZZ006218	Galtech Q75 hydraulic 1 bank 1/2" BSP 90 l/min double acting cylinder spool 3 positions, spring return with 12VDC, electro solenoid control c/w manual over-ride.	350	£227.72	€ 307.42
ZZ006221	Galtech Q75 hydraulic 1 bank 1/2" BSP 90 l/min double acting cylinder spool 3 positions, spring return with 24VDC, electro solenoid control c/w manual over-ride.	350	£227.72	€ 307.42
ZZ006219	Galtech Q75 hydraulic 2 bank 1/2" BSP 90 l/min double acting cylinder spool 3 positions, spring return with 12VDC, electro solenoid control c/w manual over-ride.	350	£420.70	€ 567.95
ZZ006222	Galtech Q75 hydraulic 2 bank 1/2" BSP 90 l/min double acting cylinder spool 3 positions, spring return with 24VDC, electro solenoid control c/w manual over-ride.	350	£420.74	€ 567.99
ZZ006220	Galtech Q75 hydraulic 3 bank 1/2" BSP 90 l/min double acting cylinder spool 3 positions, spring return with 12VDC, electro solenoid control c/w manual over-ride.	300	£610.61	€ 824.32
ZZ006223	Galtech Q75 hydraulic 3 bank 1/2" BSP 90 l/min double acting cylinder spool 3 positions, spring return with 24VDC, electro solenoid control c/w manual over-ride.	300	£610.61	€ 824.32

3/4" MONOBLOCK CONTROL VALVES GALTECH UP TO 120 L/MIN



www.flowfitonline.com
TECH. DATA SHEET
DCV22



Q95 SERIES

PART NO	DESCRIPTION	MAX PRESSURE BAR	NETT PRICE	
			£ STERLING	€ EUROS
095010103001000	Galtech Q95 hydraulic 1 bank, 3/4" BSP 120 l/min double acting cylinder spool 3 position, spring return	350	£89.79	€ 121.22
095020103001000	Galtech Q95 hydraulic 2 bank, 3/4" BSP 120 l/min double acting cylinder spool 3 position, spring return	350	£132.98	€ 179.53
095030103001000	Galtech Q95 hydraulic 3 bank, 3/4" BSP 120 l/min double acting cylinder spool 3 position, spring return	300	£174.75	€ 235.92
095040103001000	Galtech Q95 hydraulic 4 bank, 3/4" BSP 120 l/min double acting cylinder spool 3 position, spring return	270	£219.59	€ 296.44
095050103001000	Galtech Q95 hydraulic 5 bank, 3/4" BSP 120 l/min double acting cylinder spool 3 position, spring return	270	£307.72	€ 415.43
095060103001000	Galtech Q95 hydraulic 6 bank, 3/4" BSP 120 l/min double acting cylinder spool 3 position, spring return	270	£307.72	€ 415.43