

**HYDRAULIC VALVES**

# HYDRAULIC CARTRIDGE VALVES

PRODUCT	PAGE
DOUBLE PILOT OPERATED CHECK VALVES	36
SINGLE PILOT OPERATED CHECK VALVES	40
OVERCENTRE VALVES	43
RELIEF VALVES	48
DUAL CROSS RELIEF VALVES	53
CHECK VALVES	59
HOSE BURST VALVES	60
FLOW REGULATOR VALVES	63
FLOW DIVIDERS	68
SEQUENCE VALVES	69
TWO PUMP "HI-LOW" UNLOADING VALVES	71
HIGH PRESSURE BALL VALVES	72
DIVERTER VALVES	74
END STROKE VALVES	76
ROTATING COUPLINGS	78
GAUGE ISOLATOR VALVES	79
PLOUGH OVERTURNING VALVES	79



**FROM  
ONLY  
£20.87  
+VAT**



**FROM  
ONLY  
£19.65  
+VAT**



**FROM  
ONLY  
£10.43  
+VAT**



**QUALITY PRODUCTS**



**FREE ADVICE**

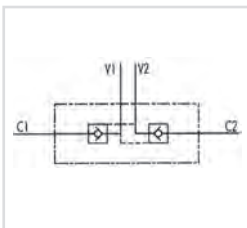
**FLOWFIT®  
24 HOUR  
DELIVERY**

## DOUBLE PILOT OPERATED CHECK VALVES



## DOUBLE PILOT OPERATED CHECK VALVES

www.flowfitonline.com  
TECH. DATA SHEET  
**CV01**



### USE AND OPERATION

Pilot check valves are used to block the cylinder in both directions. Flow is free in one direction and blocked in the reverse direction until pilot pressure is applied.

**Body:** zinc-plated steel, **Internal parts:** Hardened and ground steel, **Seals:** Buna N standard, **Poppet type:** No leakage

**Applications:** connect v1 and v2 to pressure flow and c1 and c2 to the actuator.

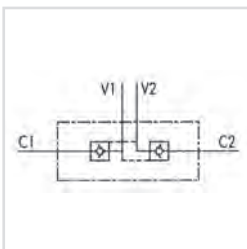
### ON REQUEST:

WITHOUT SEAL ON PILOT PISTON, 1 BAR SPRING, 8 BAR SPRING

CODE	TYPE	BSP PORTS	PILOT RATIO	MAX FLOW L/MIN	MAX PRESSURE BAR	CRACKING PRESSURE BAR	NETT. PRICE	
							£ STERLING	€ EUROS
V0010	VBPDE 1/4 L	1/4"	1:5,5	20	350	4	£18.44	€ 24.89
V0020	VBPDE 3/8" L	3/8"	1:5,5	35	350	3	£22.13	€ 29.87
V0030	VBPDE 1/2" L	1/2"	1:5	50	350	3	£26.48	€ 35.75
V0050	VBPDE 3/8"	3/8"	1:5	45	350	3,5	£31.60	€ 42.67
V0060	VBPDE 18	1/8"	1:5	45	350	3,5	£34.78	€ 46.95
V0070	VBPDE 1/2"	1/2"	1:4	70	350	3,5	£33.74	€ 45.54
V0040	VBPDE 3/4"	3/4"	1:4	100	300	2	£45.32	€ 61.17

## DOUBLE PILOT OPERATED CHECK VALVES FOR 12MM PIPE MOUNTING (DIN 2353)

www.flowfitonline.com  
TECH. DATA SHEET  
**CV02**



### USE AND OPERATION

Pilot check valves are used to block the actuator in both directions. Flow is free in one direction and blocked in the reverse direction until pilot pressure is applied. They are easily assembled on a cylinder. We supply on request fittings kit for mounting on cylinder with a specific centre distance.

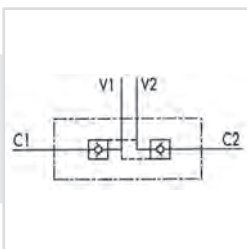
**Body:** zinc-plated steel, **Internal parts:** Hardened and ground steel, **Seals:** Buna N standard, **Poppet type:** No leakage

**Applications:** connect v1 and v2 to pressure flow and c1 and c2 to the actuator with the pipe.

### ON REQUEST:

WITH OUT SEAL ON PILOT PISTON, 1 BAR SPRING, 8 BAR SPRING

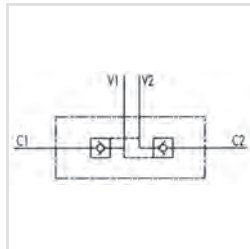
CODE	TYPE	BSP PORTS	PILOT RATIO	MAX FLOW L/MIN	MAX PRESSURE BAR	CRACKING PRESSURE BAR	NETT. PRICE	
							£ STERLING	€ EUROS
V0090	VBPDE 1/4" L 2 CEXC 12L	1/4"	1:5,5	20	350	4	£25.81	€ 34.84
V0110	VBPDE 3/8" L 2 CEXC 12L	3/8"	1:5,5	30	350	4	£25.81	€ 34.84
V0091	VBPDE 1/4" L 2 CEXC-10L	1/4"	XZ1:5,5	20	350	5,5	£27.94	€ 37.72



CODE	TYPE	BSP PORTS	PILOT RATIO	MAX FLOW L/MIN	MAX PRESSURE BAR	CRACKING PRESSURE BAR	NETT. PRICE	
							£ STERLING	€ EUROS
V0130	VBPDE 3/8" L 2 CC 12L	3/8"	1:5,5	35	350	3	£27.93	€ 37.70
V0135	VBPDE 1/2" L 2 CC 15L	1/2"	1:5	50	350	3	£34.78	€ 46.95

## DOUBLE PILOT OPERATED CHECK VALVE WITH ADJUSTABLE BANJO UNION

www.flowfitonline.com  
TECH. DATA SHEET  
**CV03**



### USE AND OPERATION

Pilot check valves are used to block the cylinder in both directions. Flow is free in one direction and blocked in the reverse direction until pilot pressure is applied. This valve is ideal for very short distance centre cylinders. The check cartridge serves also as fixing banjo, allowing after nut releasing a 90° regulation

**Body:** zinc-plated steel, **Internal parts:** Hardened and ground steel, **Seals:** Buna N standard, **Poppet type:** No leakage

**Applications:** connect v1 and v2 to pressure flow, connect c1 directly to the cylinder through the 3/8" screw and c2 to the cylinder through the banjo.

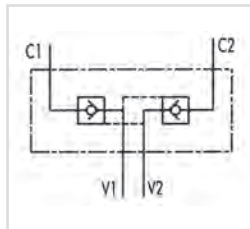
### ON REQUEST:

WITH OUT SEAL ON PILOT PISTON, 1 BAR SPRING, 8 BAR SPRING

CODE	TYPE	BSP PORTS	PILOT RATIO	MAX FLOW L/MIN	MAX PRESSURE BAR	CRACKING PRESSURE BAR	NETT. PRICE	
							£ STERLING	€ EUROS
V0112	VBPDE 3/8" L SC 12L	3/8"	1:5,5	30	350	4	£35.85	€ 48.39

## DOUBLE PILOT OPERATED CHECK VALVES - TYPE A

www.flowfitonline.com  
TECH. DATA SHEET  
**CV04**



### USE AND OPERATION

Pilot check valves are used to block the cylinder in both directions. Flow is free in one direction and blocked in the reverse direction until pilot pressure is applied.

**Body:** zinc-plated steel, **Internal parts:** Hardened and ground steel, **Seals:** Buna N standard, **Poppet type:** No leakage

**Applications:** connect v1 and v2 to pressure flow and c1 and c2 to the actuator

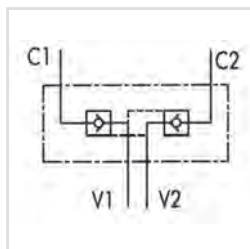
### ON REQUEST:

WITH OUT SEAL ON PILOT PISTON, 1 BAR SPRING, 8 BAR SPRING

CODE	TYPE	BSP PORTS	PILOT RATIO	MAX FLOW L/MIN	MAX PRESSURE BAR	CRACKING PRESSURE BAR	NETT. PRICE	
							£ STERLING	€ EUROS
V0178	VBPDE 1/4" A	1/4"	1:5,5	20	350	4,5	£28.44	€ 38.39
V0180	VBPDE 3/8" A	3/8"	1:5,5	30	350	4,5	£34.78	€ 46.95
V0190	VBPDE 1/2" A	1/2"	1:4,5	55	350	3	£48.49	€ 65.46

## DOUBLE PILOT OPERATED CHECK VALVES FLANGEABLE

www.flowfitonline.com  
TECH. DATA SHEET  
**CV05**



### USE AND OPERATION

Pilot check valves are used to block the cylinder in both directions. Flow is free in one direction and blocked in the reverse direction until pilot pressure is applied. The face mounting enables assembly directly on the cylinder

**Body:** zinc-plated steel, **Internal parts:** Hardened and ground steel, **Seals:** Buna N standard, **Poppet type:** No leakage

**Applications:** connect v1 and v2 to pressure flow and c1 and c2 to the actuator through the flanges

### ON REQUEST:

WITH OUT SEAL ON PILOT PISTON, 1 BAR SPRING, 8 BAR SPRING

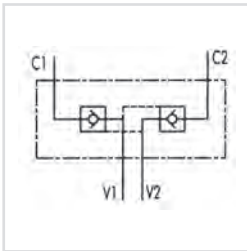
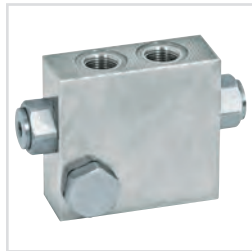
CODE	TYPE	BSP PORTS	PILOT RATIO	MAX FLOW L/MIN	MAX PRESSURE BAR	CRACKING PRESSURE BAR	NETT. PRICE	
							£ STERLING	€ EUROS
V0185	VBPDE 3/8" FL	3/8"	1:5,5	30	350	4,5	£38.26	€ 51.66
V0195	VBPDE 1/2" FL	1/2"	1:4,5	55	350	3	£48.49	€ 65.46
B5000	FLANGE FOR 3/8"						£10.27	€ 13.87
B5500	FLANGE FOR 1/2"						£11.96	€ 16.14

## DOUBLE PILOT OPERATED CHECK VALVES FLANGEABLE BY SCREW

www.flowfitonline.com

TECH. DATA SHEET

**CV06**



### USE AND OPERATION

Pilot check valves are used to block the actuator in both directions. Flow is free in one direction and blocked in the reverse direction until pilot pressure is applied. This valve can be fixed directly on cylinder through the drilled screw supplied with the valve

**Body:** zinc-plated steel, **Internal parts:** Hardened and ground steel,

**Seals:** Buna N standard, **Poppet type:** No leakage

**Applications:** connect v1 and v2 to pressure flow and c1 and c2 to the actuator (c1 by the pipe and c2 by the screw)

### ON REQUEST:

WITH OUT SEAL ON PILOT PISTON, 1 BAR SPRING, 8 BAR SPRING

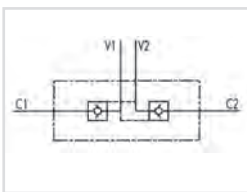
CODE	TYPE	BSP PORTS	PILOT RATIO	MAX FLOW L/MIN	MAX PRESSURE BAR	CRACKING PRESSURE BAR	NETT. PRICE	
							£ STERLING	€ EUROS
V0178/FLV	VBPDE 1/4" A FLV	1/4"	1:5,5	20	350	4.5	£38.47	€ 51.93
V0180/FLV	VBPDE 3/4" A FLV	3/4"	1:5,5	30	350	4.5	£48.49	€ 65.46

## CYLINDRICAL DOUBLE PILOT OPERATED CHECK VALVE

www.flowfitonline.com

TECH. DATA SHEET

**CV07**



### USE AND OPERATION

Pilot check valves are used to block the cylinder in both directions. Flow is free in one direction and blocked in the reverse direction until pilot pressure is applied. Cylindrical type instead of standard one (parallelepiped)

**Body:** zinc-plated steel, **Internal parts:** Hardened and ground steel,

**Seals:** Buna N standard, **Poppet type:** No leakage

**Applications:** connect v1 and v2 to pressure flow and c1 and c2 to the actuator

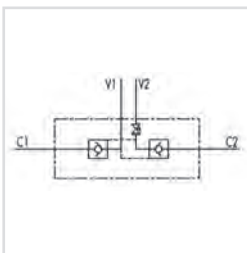
CODE	TYPE	BSP PORTS	PILOT RATIO	MAX FLOW L/MIN	MAX PRESSURE BAR	CRACKING PRESSURE BAR	NETT. PRICE	
							£ STERLING	€ EUROS
V0055	VBPDE 3/8" CYLINDRICAL	3/8"	1:5	45	350	3	£34.78	€ 44.18

## DOUBLE PILOT OPERATED CHECK VALVES WITH MANUAL SHUT-OFF

www.flowfitonline.com

TECH. DATA SHEET

**CV08**



### USE AND OPERATION

Pilot check valves are used to block the actuator in both directions. Flow is free in one direction and blocked in the reverse direction until pilot pressure is applied. These valves are very safe, that's why they are ideal to be assembled on crane hydraulic cylinders.

**Body:** zinc-plated steel, **Internal parts:** Hardened and ground steel,

**Seals:** Buna N standard, **Poppet type:** No leakage

**Applications:** connect v1 and v2 to pressure flow and c1 and c2 to the actuator

### ON REQUEST:

WITH OUT SEAL ON PILOT PISTON, RIGHT OR LEFT SIDE LEVER (TO SPECIFY IN THE ORDER)

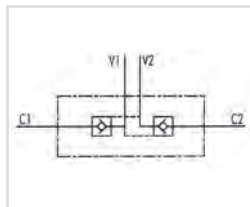
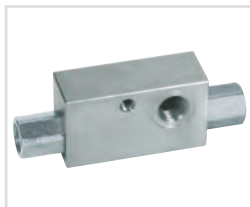
CODE	TYPE	BSP PORTS	PILOT RATIO	MAX FLOW L/MIN	MAX PRESSURE BAR	CRACKING PRESSURE BAR	NETT. PRICE	
							£ STERLING	€ EUROS
V0072	VBPDE 1/4" L C/RUBINETTO	1/4"	1:5,5	20	350	4	£37.94	€ 51.22
V0074	VBPDE 3/8" L C/RUBINETTO	3/8"	1:5,5	30	350	3	£38.47	€ 51.93
V0076	VBPDE 1/2" L C/RUBINETTO	1/2"	1:5	50	350	3	£46.89	€ 63.30
V0132*	VBPDE 1/4" L C/RUB. 2 CEXC 12L	1/4"	1:5,5	20	350	4	£40.06	€ 54.08
V0134*	VBPDE 3/8" L C/RUB. 2 CEXC 12L	3/8"	1:5,5	30	350	4	£40.06	€ 54.08
V0136*	VBPDE 1/2" L C/RUB. 2 CC 15L	1/2"	1:5	50	350	3	£49.53	€ 66.87

\* = Pipe DIN 2353



## DOUBLE PILOT OPERATED CHECK VALVES WITH LATERAL JOINS

www.flowfitonline.com  
TECH. DATA SHEET  
**CV09**



### USE AND OPERATION

Pilot check valves are used to block the cylinder in both directions. Flow is free in one direction and blocked in the reverse direction until pilot pressure is applied. The feature of this valve is the side position of the ports

**Body:** zinc-plated steel, **Internal parts:** Hardened and ground steel, **Seals:** Buna N standard, **Poppet type:** No leakage

**Applications:** connect v1 and v2 to pressure flow and c1 and c2 to the actuator

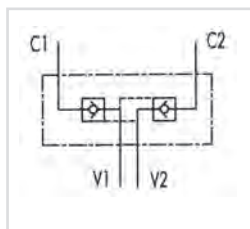
### ON REQUEST:

WITH OUT SEAL ON PILOT PISTON

CODE	TYPE	BSP PORTS	PILOT RATIO	MAX FLOW L/MIN	MAX PRESSURE BAR	CRACKING PRESSURE BAR	NETT. PRICE	
							£ STERLING	€ EUROS
V0181	VBPDE 1/4" AL	1/4"	1:5,5	20	350	4	£28.44	€ 38.39
V0182	VBPDE 3/8" AL	3/8"	1:5,5	35	350	3	£33.74	€ 45.54

## DOUBLE PILOT OPERATED CHECK VALVES TO WELD

www.flowfitonline.com  
TECH. DATA SHEET  
**CV10**



### USE AND OPERATION

Having inside the check cartridge, the function of this valve is nearly the same of the pilot check valves, Directly weld on the cylinder. Q 70 available in the single operated type. The feature of this valve is the high pressure drop, so as to reduce speed and to limit vibrations.

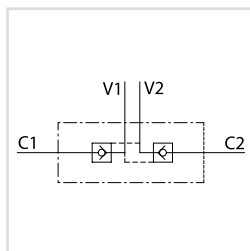
**Body:** Steel, **Internal parts:** Hardened and ground steel, **Seals:** Buna N standard, **Poppet type:** No leakage

**Applications:** connect v1 and v2 to pressure flow and weld c1 and c2 to the actuator. The check cartridge and pilot piston have to be mounted after installation of the valve, so they are supplied separately

CODE	TYPE	PILOT RATIO	MAX FLOW L/MIN	MAX PRESSURE BAR	CRACKING PRESSURE BAR	NETT. PRICE	
						£ STERLING	€ EUROS
V1011	VBAS 70	1:5,5	25	350	3	£43.26	€ 58.41
V1010	VBAS 80	1:5,5	25	350	2	£47.10	€ 63.58
V1012	VBAS 90	1:5,5	25	350	2	£52.01	€ 70.22

## COMPACT DOUBLE PILOT OPERATED CHECK VALVE

www.flowfitonline.com  
TECH. DATA SHEET  
**CV11**



### USE AND OPERATION:

Pilot check valves are used to block the actuator in both directions. Flow is free in one direction and blocked in the reverse direction until pilot pressure is applied. This valve is ideal for very short distance centre cylinders and is fixed on them by a drilled screw supplied with the valve.

**Body:** zinc-plated steel **Internal parts:** hardened and ground steel **Seals:** BUNA N standard Tightness: ball type; any leakage

**Applications:** Connect V1 and V2 to the pressure flow and C1 and C2 to the actuator by the screw.

CODE	TYPE	BSP PORTS	PILOT RATIO	MAX FLOW L/MIN	MAX PRESSURE BAR	CRACKING PRESSURE BAR	NETT. PRICE	
							£ STERLING	€ EUROS
V0114	VBPDE 3/8" L CMP/FLV	3/8"	1 : 4,9	20	300	0,6	£44.38	€ 59.91

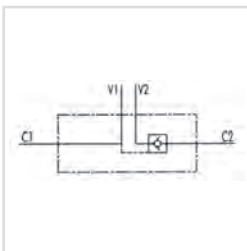
FOR SALES  
& ADVICE  
CALL US  
01584  
876033

## SINGLE PILOT OPERATED CHECK VALVES



### SINGLE PILOT OPERATED CHECK VALVE

www.flowfitonline.com  
TECH. DATA SHEET  
**CV12**



#### USE AND OPERATION

These valves are used to block the cylinder in one direction. The flow is free in one direction and blocked in the reverse direction until pilot pressure is applied. They are easily assembled on cylinders. Specific distance-centre mounting fittings kit on request.

**Body:** zinc-plated steel, **Internal parts:** Hardened and ground steel, **Seals:** Buna N standard, **Poppet type:** No leakage

**Applications:** connect v1 and v2 to pressure flow, c1 to the free flow side of the actuator and c2 to the actuator's side you want the flow to be blocked

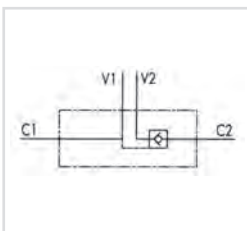
#### ON REQUEST:

WITH OUT SEAL ON PILOT PISTON, 1 BAR SPRING, 8 BAR SPRING

CODE	TYPE	BSP PORTS	PILOT RATIO	MAX FLOW L/MIN	MAX PRESSURE BAR	CRACKING PRESSURE BAR	NETT. PRICE	
							£ STERLING	€ EUROS
V0220	VBPSE 1/4" L 4 VIE	1/4"	15,5	20	350	4	£17.49	€ 23.61
V0230	VBPSE 3/8" L 4 VIE	3/8"	1:5.5	35	350	3	£20.42	€ 27.57
V0240	VBPSE 1/2" L 4 VIE	1/2"	1:5	50	350	6	£24.80	€ 33.48
V0250	VBPSE 3/8" 4 VIE	3/8"	1:5	45	350	8	£20.42	€ 27.57
V0260	VBPSE 1/2" 4 VIE	1/2"	1:4	70	350	3.5	£30.08	€ 40.60
V0245	VBPSE 3/4" 4 VIE	3/4"	1:4	100	350	2	£42.99	€ 58.04

### SINGLE PILOT OPERATED CHECK VALVES FOR 12MM PIPE MOUNTING (DIN 2353)

www.flowfitonline.com  
TECH. DATA SHEET  
**CV13**



#### USE AND OPERATION

These valves are used to block the cylinder in one direction. The flow is free in one direction and blocked in the reverse direction until pilot pressure is applied

**Body:** zinc-plated steel, **Internal parts:** Hardened and ground steel, **Seals:** Buna N standard, **Poppet type:** No leakage

**Applications:** connect v1 and v2 to the pressure flow, c1 to the free flow side of the actuator and c2 to the actuator's side you want the flow to be blocked

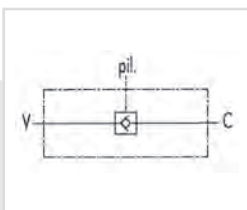
#### ON REQUEST:

WITH OUT SEAL ON PILOT PISTON, WITH OUT NUT AND OLIVE, 1 BAR SPRING, 8 BAR SPRING

CODE	TYPE	BSP PORTS	PILOT RATIO	MAX FLOW L/MIN	MAX PRESSURE BAR	CRACKING PRESSURE BAR	NETT. PRICE	
							£ STERLING	€ EUROS
V0090/SE	VBPSE 1/4" L 2 CEXC	1/4"	1:5.5	20	350	4	£23.63	€ 31.90
V0110/SE	VBPSE 3/8" L 2 CEXC	3/8"	1:5.5	30	350	4	£23.63	€ 31.90
V0135/SE	VBPSE 1/2" L 2 CC	1/2"	1:5	50	350	3	£31.16	€ 42.07

### 3 WAYS SINGLE PILOT OPERATED CHECK VALVES, IN LINE

www.flowfitonline.com  
TECH. DATA SHEET  
**CV14**



#### USE AND OPERATION

These valves are used to block the cylinder in one direction. The flow is free in one direction and blocked in the reverse direction until pilot pressure is applied

**Body:** Yellow-plated steel, **Internal parts:** Hardened and ground steel, **Seals:** Buna N standard, **Poppet type:** No leakage

**Applications:** connect V to the pressure flow, c to the actuator's side you want the flow to be blocked and pil to the pilot line

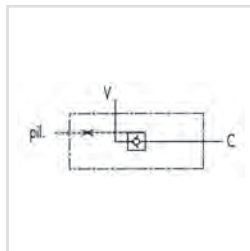
#### ON REQUEST:

8 BAR SPRING

CODE	TYPE	BSP PORTS	PILOT RATIO	MAX FLOW L/MIN	MAX PRESSURE BAR	CRACKING PRESSURE BAR	NETT. PRICE	
							£ STERLING	€ EUROS
V0201	VBPSL 1/4"	1/4"	1:9.8	15	350	2.5	£22.57	€ 30.47
V0202	VBPSL 3/8"	3/8"	1:6.5	30	300	5	£26.11	€ 35.26
V0203	VBPSL 1/2"	1/2"	1:4.6	45	300	3	£29.22	€ 39.45
V0204	VBPSL 3/4"	3/4"	1:4.4	80	250	0.5	£49.33	€ 66.59
V0205	VBPSL 1"	1"	1:3.5	120	220	1	£107.41	€ 144.99

## SINGLE PILOT OPERATED CHECK VALVES, HIGH PILOT

www.flowfitonline.com  
TECH. DATA SHEET  
**CV15**



### USE AND OPERATION

These valves are used to block the cylinder in one direction. The flow is free in one direction and blocked in the reverse direction until pilot pressure is applied. Thanks to its high pilot ratio and to a time-lag locking device, it's suitable for circuits with heavy loads to avoid vibrations.

**WARNING:** Please ask the producer for use with distributors or open centre solenoid valves

**Body:** zinc-plated steel, **Internal parts:** Hardened and ground steel,

**Seals:** Buna N standard, **Poppet type:** No leakage

**Applications:** connect V to the pressure flow, c to the actuator's side you want the flow to be blocked and pil to the pilot line

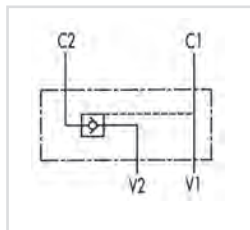
**ON REQUEST:**

1 BAR SPRING, 8 BAR SPRING

CODE	TYPE	BSP PORTS	PILOT RATIO	MAX FLOW L/MIN	MAX PRESSURE BAR	CRACKING PRESSURE BAR	NETT. PRICE	
							£ STERLING	€ EUROS
V0273	VLB/3 SE 1/4"	1/4"	1:8	20	350	4	£24.39	€ 32.92
V0275	VLB/3 SE 3/8"	3/8"	1:8	40	350	3.5	£27.93	€ 37.70
V0277	VLB/3 SE 1/2"	1/2"	1:7	70	350	3.5	£31.37	€ 42.36

## SINGLE PILOT OPERATED CHECK VALVES TYPE A

www.flowfitonline.com  
TECH. DATA SHEET  
**CV16**



### USE AND OPERATION

These valves are used to block the cylinder in one direction. flow is free in one direction and blocked in the reverse direction until pilot pressure is applied.

**Body:** zinc-plated steel, **Internal parts:** Hardened and ground steel,

**Seals:** Buna N standard, **Poppet type:** No leakage

**Applications:** connect v1 to the pressure flow, c1 to the free flow side of the actuator and c2 to the actuator's side you want the flow to be blocked

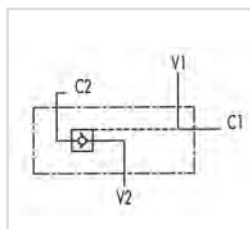
**ON REQUEST:**

WITHOUT SEAL ON PILOT PISTON 1 BAR SPRING, 8 BAR SPRING

CODE	TYPE	BSP PORTS	PILOT RATIO	MAX FLOW L/MIN	MAX PRESSURE BAR	CRACKING PRESSURE BAR	NETT. PRICE	
							£ STERLING	€ EUROS
V0272	VBPS 1/4" A	1/4"	1:5.5	20	350	4.5	£28.67	€ 38.72
V0274	VBPS 3/8" A	3/8"	1:5.5	30	350	4.5	£29.55	€ 39.90
V0276	VBPS 1/2" A	1/2"	1:4.5	55	350	3	£35.46	€ 47.88

## SINGLE PILOT OPERATED CHECK VALVES FLANGEABLE

www.flowfitonline.com  
TECH. DATA SHEET  
**CV17**



### USE AND OPERATION

These valves are used to block the cylinder in one direction. flow is free in one direction and blocked in the reverse direction until pilot pressure is applied, This valve can be fixed directly on cylinder

**Body:** zinc-plated steel, **Internal parts:** Hardened and ground steel,

**Seals:** Buna N standard, **Poppet type:** No leakage

**Applications:** Connect v1 and v2 to the pressure flow, c1 to the free flow side of the actuator and c2 to the actuator's side you want the flow to be blocked

**ON REQUEST:**

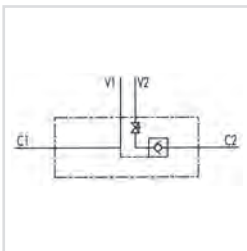
WITHOUT SEAL ON PILOT PISTON

CODE	TYPE	BSP PORTS	PILOT RATIO	MAX FLOW L/MIN	MAX PRESSURE BAR	CRACKING PRESSURE BAR	NETT. PRICE	
							£ STERLING	€ EUROS
V0268	VBPS 1/4" FL	1/4"	1:5.5	20	350	4.5	£32.01	€ 43.22
V0269	VBPS 3/8" FL	3/8"	1:5.5	30	350	4.5	£32.79	€ 44.26
V0270	VBPS 1/2" FL	1/2"	1:4.5	55	350	3	£40.29	€ 54.39

## SINGLE PILOT OPERATED CHECK VALVES WITH MANUAL SHUT-OFF

[www.flowfitonline.com](http://www.flowfitonline.com)

TECH. DATA SHEET

**CV18**


### USE AND OPERATION

Pilot check valves are used to block the actuator in both direction. Flow is free in one direction and blocked in the reverse direction until pilot pressure is applied. These valves are very safe, that's why they are ideal to be assembled on crane hydraulic cylinders. The shut-off system enables to exclude and risk caused by possible manoeuvring errors.

**Body:** zinc-plated steel, **Internal parts:** Hardened and ground steel,

**Seals:** Buna N standard, **Poppet type:** No leakage

**Applications:** Connect v1 and v2 to the pressure flow, c1 to the free flow side of the actuator and c2 to the actuator's side you want the flow to be blocked

### ON REQUEST:

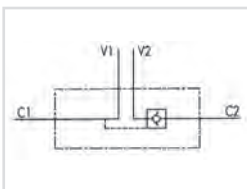
WITHOUT SEAL ON PILOT PISTON, RIGHT OF LEFT SIDE LEVER (TO SPECIFY IN THE ORDER)

CODE	TYPE	BSP PORTS	PILOT RATIO	MAX FLOW L/MIN	MAX PRESSURE BAR	CRACKING PRESSURE BAR	NETT. PRICE	
							£ STERLING	€ EUROS
V0072/SE	VBPSE 1/4" L C/RUBINETTO	1/4"	1:5,5	20	350	4	£37.62	€ 50.78
V0074/SE	VBPSE 3/8" L C/RUBINETTO	3/8"	1:5,5	30	350	3	£37.62	€ 50.78
V0076/SE	VBPSE 1/2" L C/RUBINETTO	1/2"	1:5	50	350	3	£46.20	€ 62.37
V0132/SE	VBPSE 1/4" L C/RUB.2 CEXC	1/4"	1:5,5	20	350	4	£38.69	€ 52.22
V0134/SE	VBPSE 3/8" L C/RUB.2 CEXC	3/8"	1:5,5	30	350	4	£38.69	€ 52.22
V0136/SE	VBPSE 1/2" L C/RUB.2 CC	1/2"	1:5	50	350	3	£48.05	€ 64.86

## EXTERNAL SINGLE PILOT OPERATED CHECK VALVES

[www.flowfitonline.com](http://www.flowfitonline.com)

TECH. DATA SHEET

**CV19**


### USE AND OPERATION

These valves are used to block the cylinder in one direction. The flow is free in one direction and blocked in the reverse one until pilot pressure is applied. Separated mounting enables valves to be insensitive to back pressure on the line V. Assembly on 2 or more parallel cylinders with flow regulator valve to allow balanced and soft descent is highly recommended

**Body:** Aluminium, **Internal parts:** Hardened and ground steel,

**Seals:** Buna N standard, **Poppet type:** No leakage

**Applications:** Connect v1 and v2 to the pressure flow and c1 and c2 to the actuator as indicated in the diagram

CODE	TYPE	BSP PORTS	PILOT RATIO	MAX FLOW L/MIN	MAX PRESSURE BAR	CRACKING PRESSURE BAR	NETT. PRICE	
							£ STERLING	€ EUROS
V0231	VBPSE 3/8" PS	3/8"	1:12	35	350	3	£36.00	€ 48.59



## OVERCENTRE VALVES



### USE AND OPERATION

These valves are used to control actuator's movement and block in one direction in order to enable the following functions: Under control descent of a load: load's weight doesn't carry it way as the valve prevent any cavitations of the actuator. Limited maximum pressure in case of shocks created by loads, over loads or sudden manoeuvring (load control with open centre distributor)

**Body:** Zinc-plated steel **Internal parts:** Hardened and ground steel,  
**Seals:** Buna N standard, **Tightness:** minor leakage

**Standard settings:** 320 bar

Valve setting must be at least 1,3 times more than load pressure in order to enable the valve to close even when undergone to the maximum load pressure

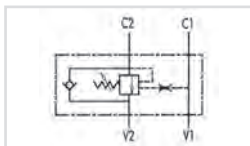
**Applications:** Connect v1 and v2 to the pressure flow, c1 to the free flow side of the actuator and c2 to the actuator's side you want the low to be blocked. In-line mounting

### ON REQUEST:

Other settings available, pilot ratio 1:8 (specify CODE/RP18), Sealing cap (CODE / P) and arranged sealing cap (CODE/PP)

## SINGLE OVER CENTRE VALVES

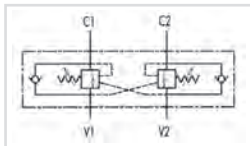
www.flowfitonline.com  
TECH. DATA SHEET  
**CV20**



CODE	TYPE	BSP PORTS	PILOT RATIO	MAX FLOW L/MIN	MAX PRESSURE BAR	NETT. PRICE	
						£ STERLING	€ EUROS
V0390	VBCD 3/8" SE	3/8"	1:3,1	35	350	£50.17	€ 67.73
V0410	VBCD 1/2" SE	1/2"	1:3,1	50	350	£50.80	€ 68.58
V0411	VBCD 3/4" SE	3/4"	1:5,5	105	350	£83.73	€ 113.04
V0390/RP18	VBCD 3/8" SE RP 1 : 8	3/8"	1:8	35	350	£59.77	€ 80.68
V0410/RP18	VBCD 1/2" SE RP 1 : 8	1/2"	1:8	50	350	£61.06	€ 82.44
V0411/RP18	VBCD 3/4" SE RP 1 : 8	3/4"	1:8	105	350	£99.62	€ 134.49

## DOUBLE OVERCENTRE VALVES

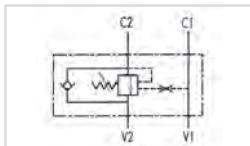
www.flowfitonline.com  
TECH. DATA SHEET  
**CV21**



CODE	TYPE	BSP PORTS	PILOT RATIO	MAX FLOW L/MIN	MAX PRESSURE BAR	NETT. PRICE	
						£ STERLING	€ EUROS
V0420	VBCD 3/8" DE	3/8"	1:3,1	35	350	£81.59	€ 110.15
V0430	VBCD 1/2" DE	1/2"	1:3,1	50	350	£84.45	€ 114.00
V0431	VBCD 3/4" DE	3/4"	1:5,5	105	350	£128.82	€ 173.91
V0420/RP18	VBCD 3/8" DE RP 1 : 8	3/8"	1:8	35	350	£97.45	€ 131.55
V0430/RP18	VBCD 1/2" DE RP 1 : 8	1/2"	1:8	50	350	£101.90	€ 137.57
V0431/RP18	VBCD 3/4" DE RP 1 : 8	3/4"	1:8	105	350	£154.93	€ 209.15

## SINGLE OVERCENTRE VALVES TYPE A

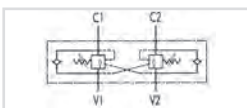
www.flowfitonline.com  
TECH. DATA SHEET  
**CV22**



The A type is different in the connections position and the pilot ratio

CODE	TYPE	BSP PORTS	PILOT RATIO	MAX FLOW L/MIN	MAX PRESSURE BAR	NETT. PRICE	
						£ STERLING	€ EUROS
V0382	VBCD 1/4" SE/A	1/4"	1:4,5	20	350	£48.35	€ 65.28
V0392	VBCD 3/8" SE/A	3/8"	1:4,5	40	350	£48.35	€ 65.28
V0412	VBCD 1/2" SE/A	1/2"	1:4,5	60	350	£51.04	€ 68.90
V0419	VBCD 3/4" SE/A	3/4"	1:5,5	95	350	£84.36	€ 113.89
V0417	VBCD 1" SE/A	1"	1:6,2	160	350	£152.20	€ 205.48

## DOUBLE OVERCENTRE VALVES TYPE A



The A type is different in the connections position and the pilot ratio

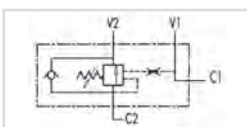
[www.flowfitonline.com](http://www.flowfitonline.com)

TECH. DATA SHEET

**CV23**

CODE	TYPE	BSP PORTS	PILOT RATIO	MAX FLOW L/MIN	MAX PRESSURE BAR	NETT. PRICE	
						£ STERLING	€ EUROS
V0418	VBCD 1/4" DE/A	1/4"	1:4,5	20	350	£79.52	€ 107.35
V0422	VBCD 3/8" DE/A	3/8"	1:4,5	40	350	£79.52	€ 107.35
V0432	VBCD 1/2" DE/A	1/2"	1:4,5	60	350	£83.81	€ 113.13
V0435	VBCD 3/4" DE/A	3/4"	1:5,5	95	350	£127.87	€ 172.63
V0436	VBCD 1" DE/A	1"	1:6,2	160	350	£222.51	€ 300.39

## SINGLE OVERCENTRE VALVES FLANGEABLE



Flange ports enable direct mounting of the valve on the actuator

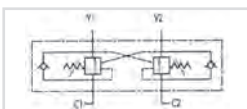
[www.flowfitonline.com](http://www.flowfitonline.com)

TECH. DATA SHEET

**CV24**

CODE	TYPE	BSP PORTS	PILOT RATIO	MAX FLOW L/MIN	MAX PRESSURE BAR	NETT. PRICE	
						£ STERLING	€ EUROS
V0400	VBCD 3/8" SE/FL	3/8"	1:4,5	40	350	£53.95	€ 72.82
V0402	VBCD 1/2" SE/FL	1/2"	1:4,5	60	350	£56.94	€ 76.86
B8000	FLANGE FOR 3/8" & 1/2" SE					£7.04	€ 9.50

## DOUBLE OVERCENTRE VALVES FLANGEABLE



Flange ports enable direct mounting of the valve on the actuator

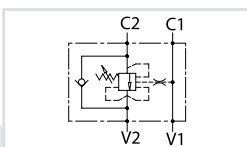
[www.flowfitonline.com](http://www.flowfitonline.com)

TECH. DATA SHEET

**CV25**

CODE	TYPE	BSP PORTS	PILOT RATIO	MAX FLOW L/MIN	MAX PRESSURE BAR	NETT. PRICE	
						£ STERLING	€ EUROS
V0424	VBCD 3/8" DE/FL	3/8"	1:4,5	40	350	£86.77	€ 117.13
V0434	VBCD 12" DE/FL	12"	1:4,5	60	350	£91.35	€ 123.31
B8500	FLANGE FOR 3/8" & 1/2" DE					£10.27	€ 13.87

## SINGLE OVERCENTRE VALVE FLANGEABLE, CLOSED CENTRE



### USE AND OPERATION:

These valves are used to control actuator's movements and block in one direction in order to have a under control descent of a load; load's weight doesn't carry it away, as the valve prevents any cavitations of the actuator. These valves are ideal when normal overcentre valves doesn't work properly as it's not sensitive to back pressure. They allow to work in series with more movements also. Flange ports enable direct mounting of the valve to the actuator.

**Body:** zinc-plated steel **Internal parts:** hardened and ground steel **Seals:** BUNA N standard **Tightness:** minor leakage **Standard setting:** 320 Bar Valve setting must be at least 1,3 times more than load pressure in order to enable the valve to close even when undergone to maximum load pressure.

**Applications:** Connect V1 and V2 to the pressure flow, C1 to the free flow side of the actuator and flange C2 to the actuator's side you want the flow to be blocked. V1 and V2 ports are reversible.

**ON REQUEST:** • other settings available

[www.flowfitonline.com](http://www.flowfitonline.com)

TECH. DATA SHEET

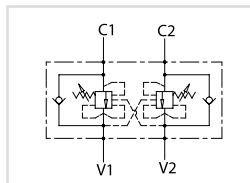
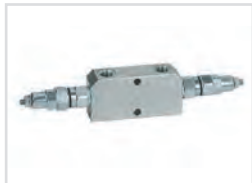
**CV26**

CODE	TYPE	BSP PORTS	PILOT RATIO	MAX FLOW L/MIN	MAX PRESSURE BAR	NETT. PRICE	
						£ STERLING	€ EUROS
V0403	VBCD 3/8" SE FL CC	3/8"	1:4,5	40	350	£64.35	€ 86.86
V0404	VBCD 1/2" SE FL CC	1/2"	1:4,5	60	350	£66.81	€ 90.18



## DOUBLE OVERCENTRE VALVE FLANGEABLE, CLOSED CENTRE

www.flowfitonline.com  
TECH. DATA SHEET  
**CV27**



### USE AND OPERATION:

These valves are used to control actuator's movements and block in both directions in order to have a under control descent of a load; load's weight doesn't carry it away, as the valve prevents any cavitations of the actuator. These valves are ideal when normal overcentre valves doesn't work properly as it's not sensitive to back pressure. They allow to work in series with more movements also.

**Body:** zinc-plated steel **Internal parts:** hardened and ground steel

**Seals:** BUNA N standard **Tightness:** minor leakage **Standard setting:** 320

Bar Valve setting must be at least 1,3 times more than load pressure in order to enable the valve to close even when undergone to maximum load pressure.

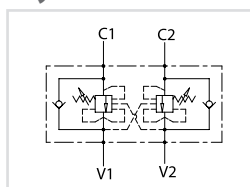
**Applications:** Connect V1 and V2 to the pressure flow, C1 and C2 to the actuator to be controlled.

**ON REQUEST:** • other settings available

CODE	TYPE	BSP PORTS	PILOT RATIO	MAX FLOW L/MIN	MAX PRESSURE BAR	NETT. PRICE	
						£ STERLING	€ EUROS
V0421	VBCD 3/8" DE-A CC	3/8"	1:4,5	40	350	£99.66	€ 134.55
V0423	VBCD 1/2" DE-A CC	1/2"	1:4,5	60	350	£103.90	€ 140.26

## DOUBLE OVERCENTRE VALVE FLANGEABLE, CLOSED CENTRE

www.flowfitonline.com  
TECH. DATA SHEET  
**CV28**



### USE AND OPERATION:

These valves are used to control actuator's movements and block in both directions in order to have a under control descent of a load; load's weight doesn't carry it away, as the valve prevents any cavitations of the actuator. These valves are ideal when normal overcentre valves doesn't work properly as it's not sensitive to back pressure. They allow to work in series with more movements also. Flange ports enable direct mounting of the valve to the actuator.

**Body:** zinc-plated steel **Internal parts:** hardened and ground steel **Seals:** BUNA N standard **Tightness:** minor leakage **Standard setting:** 320 Bar Valve setting must be at least 1,3 times more than load pressure in order to enable the valve to close even when undergone to maximum load pressure.

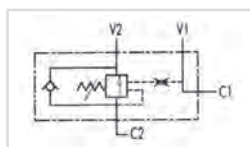
**Applications:** Connect V1 and V2 to the pressure flow, C1 and C2 to the actuator to be controlled.

**ON REQUEST:** • other settings available

CODE	TYPE	BSP PORTS	PILOT RATIO	MAX FLOW L/MIN	MAX PRESSURE BAR	NETT. PRICE	
						£ STERLING	€ EUROS
V0433	VBCD 3/8" DE FL CC	3/8"	1:4,5	40	350	£107.08	€ 144.56
V0437	VBCD 1/2" DE FL CC	1/2"	1:4,5	60	350	£110.26	€ 148.85

## SINGLE OVERCENTRE VALVES FLANEABLE BY SCREW

www.flowfitonline.com  
TECH. DATA SHEET  
**CV29**



The special connection by screw, supplied with valve, enables direct mounting of the valve on the actuator

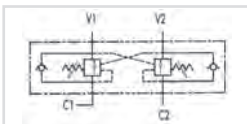
CODE	TYPE	BSP PORTS	PILOT RATIO	MAX FLOW L/MIN	MAX PRESSURE BAR	NETT. PRICE	
						£ STERLING	€ EUROS
V0392/FLV	VBCD 3/8" SE/A FLV	3/8"	1:4,5	40	350	£58.35	€ 78.78
V0412/FLV	VBCD 1/2" SE/A FLV	1/2"	1:4,5	60	350	£61.25	€ 82.68

FOR SALES  
& ADVICE  
CALL US  
01584  
876033

## DOUBLE OVERCENTRE VALVES FLANGEABLE BY SCREW

[www.flowfitonline.com](http://www.flowfitonline.com)

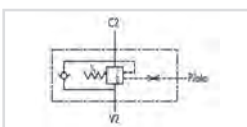
TECH. DATA SHEET

**CV30**


The special connection by screw, supplied with valve, enables direct mounting of the valve on the actuator

CODE	TYPE	BSP PORTS	PILOT RATIO	MAX FLOW L/MIN	MAX PRESSURE BAR	NETT. PRICE	
						£ STERLING	€ EUROS
V0422/FLV	VBCD 3/8" DE/A FLV	3/8"	1:4,5	40	350	£95.64	€ 129.11
V0432/FLV	VBCD 1/2" DE/A FLV	1/2"	1:4,5	60	350	£99.93	€ 134.90

## SINGLE OVER CENTRE VALVES, 3 WAYS



External pilot line

[www.flowfitonline.com](http://www.flowfitonline.com)

TECH. DATA SHEET

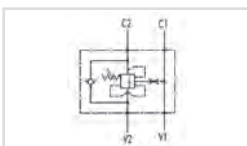
**CV31**

CODE	TYPE	BSP PORTS	PILOT RATIO	MAX FLOW L/MIN	MAX PRESSURE BAR	NETT. PRICE	
						£ STERLING	€ EUROS
V0394	VBCD 3/8" SE 3 VIE	3/8"	1:4,5	40	350	£45.95	€ 62.04
V0414	VBCD 1/2" SE 3 VIE	1/2"	1:4,5	60	350	£47.88	€ 64.64

## SINGLE OVERCENTRE VALVES FOR CLOSED CENTRE

[www.flowfitonline.com](http://www.flowfitonline.com)

TECH. DATA SHEET

**CV32**


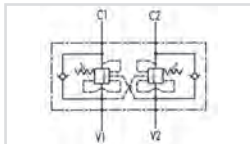
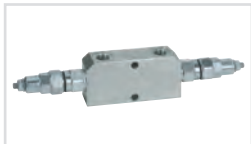
This valve is ideal when normal overcentre valves doesn't work properly as it's not sensitive to back pressure

CODE	TYPE	BSP PORTS	PILOT RATIO	MAX FLOW L/MIN	MAX PRESSURE BAR	NETT. PRICE	
						£ STERLING	€ EUROS
V0391	VBCD 3/8" SE-A-CC	3/8"	1:4,5	40	350	£58.84	€ 79.43
V0393	VBCD 1/2" SE-A-CC	1/2"	1:4,5	60	350	£60.97	€ 82.30
V0407	VBCD 3/8" SE CC	3/8"	1:3,1	35	350	£66.41	€ 89.65
V0408	VBCD 1/2 " SE CC	1/2"	1:3,1	50	350	£68.25	€ 92.13
V0409	VBCD 3/4" SE CC	3/4"	1:5,5	105	350	£105.84	€ 142.88
V0407/RP18	VBCD 3/8" SE CC	3/8"	1:8	35	350	£73.08	€ 98.67
V0408/RP18	VBCD 1/2 " SE CC	1/2"	1:8	50	350	£75.06	€ 101.33
V0409/RP18	VBCD 3/4" SE CC	3/4"	1:8	105	350	£116.34	€ 157.05

FOR SALES  
& ADVICE  
CALL US  
**01584  
876033**

## DOUBLE OVERCENTRE VALVES FOR CENTRE CLOSED

www.flowfitonline.com  
TECH. DATA SHEET  
**CV33**

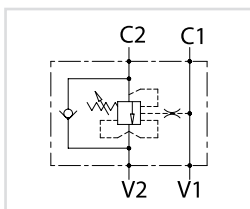


This valve is ideal when normal overcentre valves doesn't work properly as it's not sensitive to back pressure

CODE	TYPE	BSP PORTS	PILOT RATIO	MAX FLOW L/MIN	MAX PRESSURE BAR	NETT. PRICE	
						£ STERLING	€ EUROS
V0441	VBCD 3/8" DE CC	3/8"	1:3,1	35	350	£114.65	€ 154.77
V0442	VBCD 1/2" DE CC	1/2"	1:3,1	50	350	£118.53	€ 160.01
V0443	VBCD 3/4" DE CC	3/4"	1:5,5	105	350	£168.70	€ 227.74
V0441/RP18	VBCD 3/8" DE CC	3/8"	1:8	35	350	£126.14	€ 170.29
V0442/RP18	VBCD 1/2" DE CC	1/2"	1:8	50	350	£130.35	€ 175.96
V0443/RP18	VBCD 3/4" DE CC	3/4"	1:8	105	350	£185.37	€ 250.26
V0421	VBCD 3/8" DE-A-CC	3/8"	1:4,5	40	350	£99.66	€ 134.55
V0423	VBCD 1/2" DE-A-CC	1/2"	1:4,5	60	350	£103.90	€ 140.26

## SINGLE OVERCENTRE VALVE FOR CLOSED CENTRE, TYPE A

www.flowfitonline.com  
TECH. DATA SHEET  
**CV34**



### USE AND OPERATION:

These valves are used to control actuator's movements and block in one direction in order to have a under control descent of a load; load's weight doesn't carry it away, as the valve prevents any cavitations of the actuator. These valves are ideal when normal overcentre valves doesn't work properly as it's not sensitive to back pressure. They allow to work in series with more movements also.

**Body:** zinc-plated steel **Internal parts:** hardened and ground steel **Seals:** BUNA N standard **Tightness:** minor leakage **Standard setting:** 320 Bar Valve setting must be at least 1,3 times more than load pressure in order to enable the valve to close even when undergone to maximum load pressure.

**Applications:** Connect V1 and V2 to the pressure flow, C1 to the free flow side of the actuator and C2 to the actuator's side you want the flow to be blocked. In-line mounting.

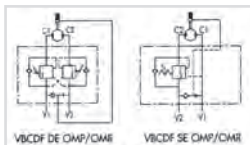
### ON REQUEST:

- other settings available

CODE	TYPE	BSP PORTS	PILOT RATIO	MAX FLOW L/MIN	MAX PRESSURE BAR	NETT. PRICE	
						£ STERLING	€ EUROS
V0391	VBCD 3/8" SE-A CC	3/8"	1:4,5	40	350	£58.84	€ 79.43
V0393	VBCD 1/2" SE-A CC	1/2"	1:4,5	60	350	£60.97	€ 82.30

## OVERCENTRE VALVES FLANGEABLE ON DANFOSS MOTORS OMP/OMR

www.flowfitonline.com  
TECH. DATA SHEET  
**CV35**



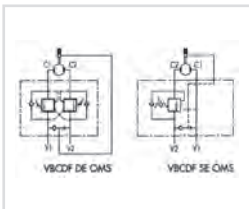
Direct flange is ideal for Danfoss motor type omp-omr and provides a maximum safety, very low pressure drops and solid installation

CODE	TYPE	BSP PORTS	PILOT RATIO	MAX FLOW L/MIN	MAX PRESSURE BAR	NETT. PRICE	
						£ STERLING	€ EUROS
V0415	VBCDF 1/2" SE OMP-OMR	1/2"	1:4,5	50	350	£61.78	€ 83.41
V0425	VBCDF 1/2" DE OMP-OMR	1/2"	1:4,5	50	350	£103.54	€ 139.77
V0415/SF	VBCDF 1/2" SE OMP-OMR SF/ BRAKE UNCLAPING	1/2"	1:4,5	50	350	£68.39	€ 92.32
V0425/SF	VBCDF 1/2" DE OMP-OMR SF/ BRAKE UNCLAPING	1/2"	1:4,5	50	350	£110.24	€ 148.82

NB. BRAKE UNCLAPING MEANS " A MECHANICAL FAIL SAFE BRAKE "

## OVERCENTRE VALVES FLANGEABLE ON DANFOSS MOTORS OMS

www.flowfitonline.com  
TECH. DATA SHEET  
**CV36**



Direct flange is ideal for danfoss engine type oms and provides a maximum safety, very low pressure drops and solid installation

CODE	TYPE	BSP PORTS	PILOT RATIO	MAX FLOW L/MIN	MAX PRESSURE BAR	NETT. PRICE	
						£ STERLING	€ EUROS
V0416	VBCDF 1/2" SE OMS	1/2"	1:4,5	50	350	£60.17	€ 81.23
V0426	VBCDF 1/2" DE OMS	1/2"	1:4,5	50	350	£102.09	€ 137.83
V0416/SF	VBCDF 1/2" SE OMS /SF BRAKE UNCLAPING	1/2"	1:8	50	350	£65.55	€ 88.48
V0426/SF	VBCDF 1/2" DE OMS SF/ BRAKE UNCLAPING	1/2"	1:8	50	350	£107.76	€ 145.49

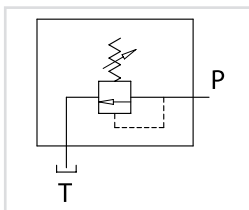
NB. BRAKE UNCLAPING MEANS "A MECHANICAL FAIL SAFE BRAKE "

## RELIEF VALVES



### 20 RELIEF VALVE CARTRIDGE

www.flowfitonline.com  
TECH. DATA SHEET  
**CV37**



#### USE AND OPERATION:

The relief valve provides overload protection in a fast and accurate way: when it reaches pressure setting, the valve open allowing pressure relief in order not to exceed this setting.

**Body:** zinc-plated steel, **Internal parts:** hardened and ground steel,

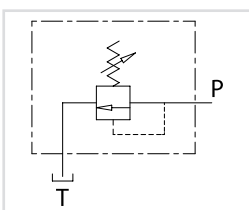
**Seals:** BUNA N standard, **Poppet type:** minor leakage

**Applications:** Fit the valve in the cavity.

CODE	TYPE	CAVITY SIZE	MAX FLOW L/MIN	PRESSURE RANGE BAR	NETT. PRICE	
					£ STERLING	€ EUROS
VC0200/350	VMPC 20 50-350 BAR	3/4" - 16	20	50-350	£16.97	€ 22.91

### 35 RELIEF VALVE CARTRIDGE

www.flowfitonline.com  
TECH. DATA SHEET  
**CV38**



#### USE AND OPERATION:

The relief valve provides overload protection in a fast and accurate way: when it reaches pressure setting, the valve open allowing pressure relief in order not to exceed this setting.

**Body:** zinc-plated steel, **Internal parts:** hardened and ground steel,

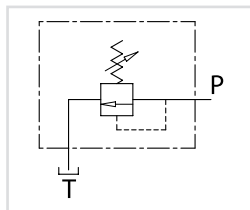
**Seals:** BUNA N standard, **Poppet type:** minor leakage

**Applications:** Fit the valve in the cavity.

CODE	TYPE	CAVITY SIZE	MAX FLOW L/MIN	PRESSURE RANGE BAR	NETT. PRICE	
					£ STERLING	€ EUROS
VC0350/120	VMPC 35 10-120 BAR	M20X1,5	35	10-120	£14.84	€ 20.04
VC0350/300	VMPC 35 50-300 BAR	M20X1,5	35	50-300	£14.84	€ 20.04

## 80 RELIEF VALVE CARTRIDGE

www.flowfitonline.com  
TECH. DATA SHEET  
**CV39**



### USE AND OPERATION:

The relief valve provides overload protection in a fast and accurate way: when it reaches pressure setting, the valve opens allowing pressure relief in order not to exceed this setting.

**Body:** zinc-plated steel, **Internal parts:** hardened and ground steel,

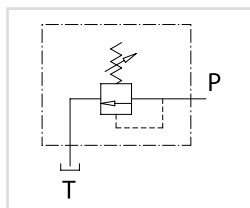
**Seals:** BUNA N standard, **Poppet type:** minor leakage

**Applications:** Fit the valve in the cavity.

CODE	TYPE	CAVITY SIZE	MAX FLOW L/MIN	PRESSURE RANGE BAR	NETT. PRICE	
					£ STERLING	€ EUROS
VC0800/120	VMPC 80 10-120 BAR	M26X1,5	80	10-120	£21.01	€ 28.35
VC0800/300	VMPC 80 50-300 BAR	M26X1,5	80	50-300	£21.06	€ 28.43

## 120 RELIEF VALVE CARTRIDGE

www.flowfitonline.com  
TECH. DATA SHEET  
**CV40**



### USE AND OPERATION:

The relief valve provides overload protection in a fast and accurate way: when it reaches pressure setting, the valve opens allowing pressure relief in order not to exceed this setting.

**Body:** zinc-plated steel, **Internal parts:** hardened and ground steel,

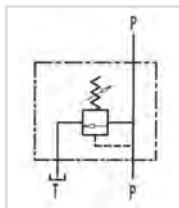
**Seals:** BUNA N standard, **Poppet type:** minor leakage

**Applications:** Fit the valve in the cavity.

CODE	TYPE	CAVITY SIZE	MAX FLOW L/MIN	PRESSURE RANGE BAR	NETT. PRICE	
					£ STERLING	€ EUROS
VC1200/120	VMPC 120 20-200 BAR	M32X1,5	120	20-200	£39.24	€ 52.97
VC1200/400	VMPC 120 50-400 BAR	M32X1,5	120	50-400	£39.24	€ 52.97

## LIGHT RELIEF VALVES

www.flowfitonline.com  
TECH. DATA SHEET  
**CV41**



### USE AND OPERATION

The relief valve provides overload protection in a fast and accurate way: when it reaches pressure setting, the valve opens allowing pressure relief in order not to exceed this setting

**Body:** Zinc-plated steel **Internal parts:** Hardened and ground steel,

**Seals:** Buna N standard, **Poppet type:** minor leakage

**Applications:** Connect circuit port with pressure to P and tank port to T, Port p is reversible

### ON REQUEST:

Different setting range available (See table below) Other settings available  
(CODE/T: please specify the desired setting)

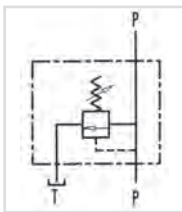
CODE	TYPE	BSP PORTS	MAX FLOW L/MIN	MAX PRESSURE BAR	NETT. PRICE	
					£ STERLING	€ EUROS
V0689	VMP 1/4" L	1/4"	30	300	£16.46	€ 22.22
V0690	VMP 3/8" L	3/8"	40	300	£21.47	€ 28.98
V0689/T	VMP 1/4" L PRESSURE PRESET	1/4"	30	300	£19.33	€ 26.10
V0690/T	VMP 3/8" L PRESSURE PRESET	3/8"	40	300	£20.88	€ 28.19
V0689/V	VMP 1/4" L HANDKNOB	1/4"	30	300	£20.09	€ 27.11
V0690/V	VMP 3/8" L HANDKNOB	3/8"	40	300	£21.62	€ 29.19
V0689/P	VMP 1/4" L SEALING CAP	1/4"	30	300	£21.05	€ 28.41
V0690/P	VMP 3/8" L SEALING CAP	3/8"	40	300	£22.64	€ 30.55

### SPRINGS

SETTING RANGE BAR	PRESSURE INCREASE ( BAR/TURN)	STANDARD SETTING BAR
10 - 50*	7	30
10 - 180 (Standard)	40	100
80 - 300	50	150

\* = For setting less than 70 Bar Q = 12 l/m

## RELIEF VALVES



### USE AND OPERATION

The relief valve provides overload protection in a fast and accurate way: when it reaches pressure setting, the valve opens allowing pressure relief in order not to exceed this setting

**Body:** Zinc-plated steel **Internal parts:** Hardened and ground steel,

**Seals:** Buna N standard, **Poppet type:** minor leakage

**Applications:** Connect circuit port with pressure to P and tank port to T, Port p is reversible

### ON REQUEST:

Different setting range available (See table below) Other settings available

(CODE/T: please specify the desired setting)

www.flowfitonline.com

TECH. DATA SHEET

**CV42**

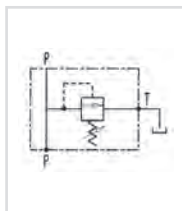
CODE	TYPE	BSP PORTS	MAX FLOW L/MIN	MAX PRESSURE BAR	NETT. PRICE	
					£ STERLING	€ EUROS
V0700	VMP 3/8"	3/8"	45	300	£21.83	€ 29.47
V0710	VMP 1/2"	1/2"	70	300	£23.97	€ 32.35
V0720	VMP 3/4"	3/4"	120	300	£31.49	€ 42.51
V0700/T	VMP 3/8" PRESSURE PRESET	3/8"	45	300	£25.34	€ 34.20
V0710/T	VMP 1/2" PRESSURE PRESET	1/2"	70	300	£27.80	€ 37.52
V0720/T	VMP 3/4" PRESSURE PRESET	3/4"	120	300	£36.46	€ 49.22
V0700/V	VMP 3/8" HANDKNOB	3/8"	45	300	£26.00	€ 35.09
V0710/V	VMP 1/2" HANDKNOB	1/2"	70	300	£28.36	€ 38.29
V0720/V	VMP 3/4" HANDKNOB	3/4"	120	300	£36.90	€ 49.82
V0700/P	VMP 3/8" SEALING CAP	3/8"	45	300	£27.13	€ 36.62
V0710/P	VMP 1/2" SEALING CAP	1/2"	70	300	£29.53	€ 39.86
V0720/P	VMP 3/4" SEALING CAP	3/4"	120	300	£38.20	€ 51.58

### SPRINGS

SETTING RANGE BAR	PRESSURE INCREASE ( BAR/TURN)	STANDARD SETTING BAR
10 - 50*	7	30
20 - 100	12	75
10 - 180	30	90
50 - 250 (Standard)	45	130
80 - 300	50	150

\* = For setting less than 70 Bar Q = 12 l/m

## DIFFERENTIAL TYPE RELIEF VALVES



### USE AND OPERATION

The relief valve provides overload protection in a fast and accurate way: when it reaches pressure setting, the valve opens allowing pressure relief in order not to exceed this setting. The differential valve opening is slower than the standard one, but the setting is more stable when the flow changes.

**Body:** Zinc-plated steel **Internal parts:** Hardened and ground steel,

**Seals:** Buna N standard, **Poppet type:** minor leakage

**Applications:** Connect circuit port with pressure to P and tank port to T. The 1" size is supplied with a double exit T (1 exit can be capped according with mounting needs)

### ON REQUEST:

Different setting range available (See table below) Other settings available

(CODE/T: please specify the desired setting)

www.flowfitonline.com

TECH. DATA SHEET

**CV43**

CODE	TYPE	BSP PORTS	MAX FLOW L/MIN	MAX PRESSURE BAR	NETT. PRICE	
					£ STERLING	€ EUROS
V0725	VMPP 3/4"	3/4"	120	400	£69.42	€ 93.72
V0735	VMPP 1"	1"	180	400	£80.49	€ 108.66
V0725/T	VMPP 3/4" PRESSURE PRESET	3/4"	120	400	£71.98	€ 97.18
V0735/T	VMPP 1" PRESSURE PRESET	1"	180	400	£83.19	€ 112.31
V0725/V	VMPP 3/4" HANDKNOB	3/4"	120	400	£71.74	€ 96.87
V0735/V	VMPP 1" HANDKNOB	1"	180	400	£82.77	€ 111.74
V0725/P	VMPP 3/4" SEALING CAP	3/4"	120	400	£71.61	€ 96.68
V0735/P	VMPP 1" SEALING CAP	1"	180	400	£84.97	€ 114.71

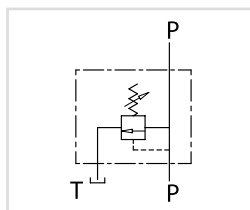
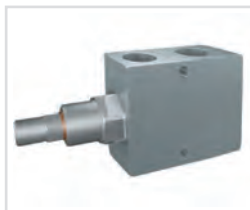
### SPRINGS

SETTING RANGE BAR	PRESSURE INCREASE ( BAR/TURN)	STANDARD SETTING BAR
20 - 200	40	160
50 - 400 (Standard)	80	180



## IN LINE MOUNTING RELIEF VALVE

www.flowfitonline.com  
TECH. DATA SHEET  
**CV44**



### USE AND OPERATION:

The relief valve provides overload protection in a fast and accurate way: when it reaches pressure setting, the valve open allowing pressure relief in order not to exceed this setting.

**Body:** zinc-plated steel, **Internal parts:** hardened and ground steel, **Seals:** BUNA N standard, **Poppet type:** minor leakage

**Applications:** Connect circuit port with pressure to P and tank port to T. Port P is reversible.

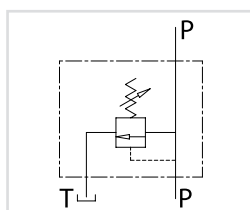
### ON REQUEST:

- different setting range
- other setting available (CODE/T000: please specify the desired setting)

CODE	TYPE	BSP PORTS	MAX FLOW L/MIN	NETT. PRICE	
				£ STERLING	€ EUROS
V0688/000	V0688/000 VMP/L/D5 1/4"	1/4"	30	£20.78	€ 28.05

## IN LINE MOUNTING RELIEF VALVE

www.flowfitonline.com  
TECH. DATA SHEET  
**CV44**



### USE AND OPERATION:

The relief valve provides overload protection in a fast and accurate way: when it reaches pressure setting, the valve open allowing pressure relief in order not to exceed this setting.

**Body:** zinc-plated steel, **Internal parts:** hardened and ground steel, **Seals:** BUNA N standard, **Poppet type:** minor leakage

**Applications:** Connect circuit port with pressure to P and tank port to T. Port P is reversible.

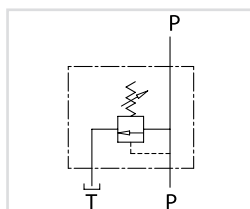
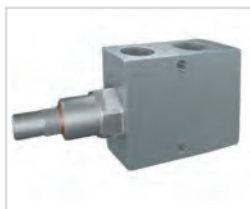
### ON REQUEST:

- different setting range
- other setting available (CODE/T000: please specify the desired setting)

CODE	TYPE	BSP PORTS	MAX FLOW L/MIN	NETT. PRICE	
				£ STERLING	€ EUROS
V0691/000	VMP/L/D5 3/8"	3/8"	45	£27.57	€ 37.22
V0692/000	VMP/L/D5 1/2"	1/2"	70	£30.54	€ 41.22
V0693/000	VMP/L/D5 3/4"	3/4"	90	£40.50	€ 54.67

## IN LINE MOUNTING RELIEF VALVE

www.flowfitonline.com  
TECH. DATA SHEET  
**CV44**



### USE AND OPERATION:

The relief valve provides overload protection in a fast and accurate way: when it reaches pressure setting, the valve open allowing pressure relief in order not to exceed this setting. The valve differential opening is slower than the standard one, but the setting is more stable changing the flow.

**Body:** zinc-plated steel, **Internal parts:** hardened and ground steel.

**Seals:** BUNA N standard, **Poppet type:** minor leakage

**Applications:** Connect circuit port with pressure to P and tank port to T. Port P is reversible.

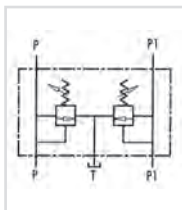
### ON REQUEST:

- different setting range
- other setting available (CODE/T000: please specify the desired setting)

CODE	TYPE	BSP PORTS	MAX FLOW L/MIN	NETT. PRICE	
				£ STERLING	€ EUROS
V0726/000	VMPP/L/D5 3/4"	3/4"	120	£79.52	€ 107.35

FOR SALES  
& ADVICE  
CALL US  
01584  
876033

## DOUBLE RELIEF VALVES



### USE AND OPERATION

Made up by 2 relief valves, the double relief valve provides overload protection in 2 lines-hydraulic circuits with 1 tank. It allows 2 different pressure setting

**Body:** Zinc-plated steel **Internal parts:** Hardened and ground steel,

**Seals:** Buna N standard, **Poppet type:** minor leakage

**Applications:** Connect P and P1 to the pressure flow, the remaining P1 and P ports to the 2 lines to be controlled but in the reverse way; connect T to the tank.

### ON REQUEST:

Different setting range available (See table below) Other settings available (CODE/T: please specify the desired setting)

[www.flowfitonline.com](http://www.flowfitonline.com)

TECH. DATA SHEET

**CV45**

CODE	TYPE	BSP PORTS	MAX FLOW L/MIN	MAX PRESSURE BAR	NETT. PRICE	
					£ STERLING	€ EUROS
V0732	VMPP 3/8"	3/8"	45	300	£44.42	€ 59.96
V0734	VMPP 1/2"	1/2"	70	300	£45.44	€ 61.34
V0732/T	VMPP 3/8" PRESSURE PRESET	3/8"	45	300	£47.52	€ 64.14
V0734/T	VMPP 1/2" PRESSURE PRESET	1/2"	70	300	£48.83	€ 65.92
V0732/V	VMPP 3/8" HANDKNOB	3/8"	45	300	£49.08	€ 66.26
V0734/V	VMPP 1/2" HANDKNOB	1/2"	70	300	£50.39	€ 68.03
V0732/P	VMPP 3/8" SEALING CAP	3/8"	45	300	£51.26	€ 69.20
V0734/P	VMPP 1/2" SEALING CAP	1/2"	70	300	£52.59	€ 70.99

### SPRINGS

SETTING RANGE BAR	PRESSURE INCREASE ( BAR/TURN)	STANDARD SETTING BAR
10 - 50*	7	30
20 - 100	12	75
10 - 180 (Standard)	30	90
50 - 250	45	130
80 - 300	50	150

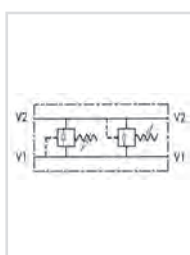
\* = For setting less than 70 Bar Q = 12 l/m



## DUAL CROSS RELIEF VALVES



www.flowfitonline.com  
TECH. DATA SHEET  
**CV46**



### USE AND OPERATION

Made up by 2 relief valves with crossed tank, this valve is used to block pressure to a certain setting in the 2 ports of an actuator/hydraulic motor. It's ideal to provide protection against sudden shock pressures and to adjust different pressures in the 2 ports of an hydraulic circuit as well.

**Body:** Zinc-plated steel **Internal parts:** Hardened and ground steel, **Seals:** Buna N standard, **Poppet type:** minor leakage

**Applications:** Connect V1 and V2 to the pressure flow or to the actuator/hydraulic motor. Vice versa for the remaining port V1 and V2. Mounting by the actuator is highly recommended in order to avoid pressure drops.

### ON REQUEST:

Different setting range available (See table below) Other settings available (CODE/T: please specify the desired setting)

CODE	TYPE	BSP PORTS	MAX FLOW L/MIN	MAX PRESSURE BAR	NETT. PRICE	
					£ STERLING	€ EUROS
V0438	VAU 1/4"	1/4"	30	300	£34.39	€ 46.42
V0440	VAU 3/8"	3/8"	45	300	£37.62	€ 50.78
V0450	VAU 1/2"	1/2"	70	300	£39.75	€ 53.68
V0460	VAU 3/4"	3/4"	110	300	£52.65	€ 71.07
V0438/T	VAU 1/4" PRESSURE PRESET	1/4"	30	300	£37.00	€ 49.95
V0440/T	VAU 3/8" PRESSURE PRESET	3/8"	45	300	£41.22	€ 55.65
V0450/T	VAU 1/2" PRESSURE PRESET	1/2"	70	300	£43.10	€ 58.19
V0460/T	VAU 3/4" PRESSURE PRESET	3/4"	110	300	£56.16	€ 75.81
V0438/V	VAU 1/4" HANDKNOB	1/4"	30	300	£38.62	€ 52.14
V0440/V	VAU 3/8" HANDKNOB	3/8"	45	300	£41.72	€ 56.32
V0450/V	VAU 1/2" HANDKNOB	1/2"	70	300	£44.53	€ 60.12
V0460/V	VAU 3/4" HANDKNOB	3/4"	110	300	£57.36	€ 77.44
V0438/P	VAU 1/4" SEALING CAP	1/4"	30	300	£40.53	€ 54.71
V0440/P	VAU 3/8" SEALING CAP	3/8"	45	300	£43.71	€ 59.00
V0450/P	VAU 1/2" SEALING CAP	1/2"	70	300	£46.61	€ 62.92
V0460/P	VAU 3/4" SEALING CAP	3/4"	110	300	£59.64	€ 80.51

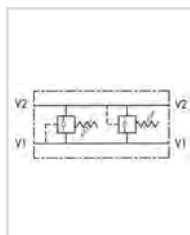
### SPRINGS

SETTING RANGE BAR	PRESSURE INCREASE ( BAR/TURN)	STANDARD SETTING BAR
10 - 50*	7	30
20 - 100	12	75
10 - 180 (Standard)	30	90
50 - 250	45	130
80 - 300	50	150

\* = For setting less than 70 Bar Q = 12 l/m

## DIFFERENTIAL DUAL CROSS RELIEF VALVES

www.flowfitonline.com  
TECH. DATA SHEET  
**CV47**



### USE AND OPERATION

Made up by 2 relief valves with crossed tank, this valve is used to block pressure to a certain setting in the 2 ports of an actuator/hydraulic motor. It's ideal to provide protection against sudden shock pressures and to adjust different pressures in the 2 ports of an hydraulic circuit as well. The differential valve makes the opening slower but more constant setting even with flow changes.

**Body:** Zinc-plated steel **Internal parts:** Hardened and ground steel, **Seals:** Buna N standard, **Poppet type:** minor leakage

**Applications:** Connect V1 and V2 to the pressure flow or to the actuator/hydraulic motor. Vice versa for the remaining port V1 and V2. Mounting by the actuator is highly recommended in order to avoid pressure drops.

**ON REQUEST:** Different setting range available (See table below) Other settings available (CODE/T: please specify the desired setting)

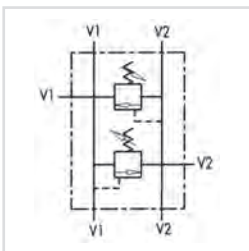
CODE	TYPE	BSP PORTS	MAX FLOW L/MIN	MAX PRESSURE BAR	NETT. PRICE	
					£ STERLING	€ EUROS
V0470	VAU 1"	1"	160	400	£139.88	€ 188.84
V0470/T	VAU 1" PRESSURE PRESET	1"	160	400	£142.24	€ 192.02
V0470/V	VAU 1" HANDKNOB	1"	160	400	£144.41	€ 194.94
V0470/P	VAU 1" SEALING CAP	1"	160	400	£145.51	€ 196.43

### SPRINGS

SETTING RANGE BAR	PRESSURE INCREASE ( BAR/TURN)	STANDARD SETTING BAR
20 - 200	40	160
50 - 400 (Standard)	80	180

## DUAL CROSS RELIEF VALVES

www.flowfitonline.com  
TECH. DATA SHEET  
**CV48**



### USE AND OPERATION

Made up by 2 relief valves with crossed tank, this valve is used to block pressure to a certain setting in the 2 ports of an actuator/hydraulic motor. It's ideal to provide protection against sudden shock pressures and to adjust different pressures in the 2 ports of an hydraulic circuit as well. The 6 ports (2 ways in and 4 ways out reversible) enable to use just 1 valve for 2 cylinders.

**Body:** Zinc-plated steel **Internal parts:** Hardened and ground steel,

**Seals:** Buna N standard, **Poppet type:** minor leakage

**Applications:** Connect V1 and V2 to the pressure flow or to the actuator/hydraulic motor. Vice versa for the remaining port V1 and V2. Mounting by the actuator is highly recommended in order to avoid pressure drops.

### ON REQUEST:

Different setting range available (See table below) Other settings available (CODE/T: please specify the desired setting)

CODE	TYPE	BSP PORTS	MAX FLOW L/MIN	MAX PRESSURE BAR	NETT. PRICE	
					£ STERLING	€ EUROS
V0737	VMPDI 3/8"	3/8"	45	300	£44.27	€ 59.77
V0738	VMPDI 1/2"	1/2"	70	300	£47.29	€ 63.84
V0737/T	VMPDI 3/8" PRESSURE PRESET	3/8"	45	300	£47.29	€ 63.84
V0738/T	VMPDI 1/2" PRESSURE PRESET	1/2"	70	300	£50.09	€ 67.62
V0737/V	VMPDI 3/8" HANDKNOB	3/8"	45	300	£48.75	€ 65.82
V0738/V	VMPDI 1/2" HANDKNOB	1/2"	70	300	£51.45	€ 69.45
V0737/P	VMPDI 3/8" SEALING CAP	3/8"	45	300	£50.66	€ 68.40
V0738/P	VMPDI 1/2" SEALING CAP	1/2"	70	300	£53.48	€ 72.20

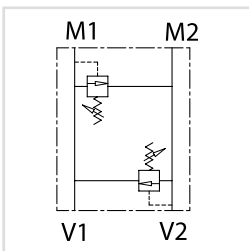
### SPRINGS

SETTING RANGE BAR	PRESSURE INCREASE ( BAR/TURN)	STANDARD SETTING BAR
10 - 50*	7	30
20 - 100	12	75
10 - 180 (Standard)	30	90
50 - 250	45	130
80 - 300	50	150

\* = For setting less than 70 Bar Q = 12 l/m

## DUAL CROSS RELIEF VALVE FLANGEABLE ON DANFOSS MOTORS OMP/OMR BY SCREWS

www.flowfitonline.com  
TECH. DATA SHEET  
**CV49**



### USE AND OPERATION:

Made up by 2 relief valves with crossed tank, this valve is used to block pressure to a certain setting in the 2 ports of an actuator/hydraulic motor. It's ideal to provide protection against sudden shock pressures and to adjust different pressures in the 2 ports of an hydraulic circuit as well. Direct flange is ideal for Danfoss motors type OMPOMR and provides a maximum safety, very low pressure drops and solid installation.

**Body:** zinc-plated steel, **Internal parts:** hardened and ground steel.

**Seals:** BUNA N standard, **Poppet type:** minor leakage

**Applications:** Flange M1 and M2 directly to the motor by screws (not included) and connect ports V1 and V2 to pressure flow.

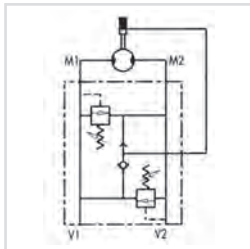
### ON REQUEST:

- Different setting range
- Other setting available (CODE/T: please specify the desired setting)

CODE	TYPE	BSP PORTS	MAX FLOW L/MIN	NETT. PRICE	
				£ STERLING	€ EUROS
V0503/000	VAU OM 1/2" WSC	1/2"	40	£49.30	€ 66.56

# DUAL CROSS RELIEF VALVE FLANGEABLE ON DANFOSS MOTORS OMS-OMP/OMR-OMT

www.flowfitonline.com  
TECH. DATA SHEET  
**CV50**



## USE AND OPERATION

Made up by 2 relief valves with crossed tank, this valve is used to block pressure to a certain setting in the 2 ports of an actuator/hydraulic motor. It's ideal to provide protection against sudden shock pressures and to adjust different pressures in the 2 ports of an hydraulic circuit as well. Direct flange is ideal for Danfoss motors type OMS, OMP/OMR and OMT and provides a maximum safety, very low pressure drops and solid installation.

**Body:** Zinc-plated steel **Internal parts:** Hardened and ground steel, **Seals:** Buna N standard, **Poppet type:** minor leakage

**Applications:** Flange M1 and M2 directly to the motor and connect V1 and V2 to pressure flow.

## ON REQUEST:

Different setting range available (See table below) Other settings available (CODE/T: please specify the desired setting). Single acting with just 1 relief available (CODE/ SE). Brake unclamping (CODE/ SF)

CODE	TYPE	BSP PORTS	MAX FLOW L/MIN	MAX PRESSURE BAR	NETT. PRICE	
					£ STERLING	€ EUROS
V0490	VAU 1/2" OMS	1/2"	50	300	£46.71	€ 63.06
V0500	VAU 1/2" OMP/OMR	1/2"	60	300	£47.61	€ 64.27
V0505	VAU 3/4" OMT	3/4"	100	300	£56.94	€ 76.86
V0490/SE	VAU 1/2" OMS SE/ SINGLE ACTING	1/2"	50	300	£44.98	€ 60.73
V0500/SE	VAU 1/2" OMP/OMR SE/SINGLE ACTING	1/2"	60	300	£46.45	€ 62.70
V0505/SE	VAU 3/4" OMT SE/SINGLE ACTING	3/4"	100	300	£55.65	€ 75.14
V0490/T	VAU 1/2" OMS PRESSURE PRESET	1/2"	50	300	£48.89	€ 66.00
V0500/T	VAU 1/2" OMP/OMR PRESSURE PRESET	1/2"	60	300	£49.98	€ 67.48
V0505/T	VAU 3/4" OMT PRESSURE PRESET	3/4"	100	300	£59.21	€ 79.93
V0490/V	VAU 1/2" OMS HANDKNOB	1/2"	50	300	£51.17	€ 69.08
V0500/V	VAU 1/2" OMP/OMR HANDKNOB	1/2"	60	300	£52.41	€ 70.76
V0505/V	VAU 3/4" OMT HANDKNOB	3/4"	100	300	£50.78	€ 68.56
V0490/P	VAU 1/2" OMS SEALING CAP	1/2"	50	300	£52.39	€ 70.73
V0500/P	VAU 1/2" OMP/OMR SEALING CAP	1/2"	60	300	£53.45	€ 72.15
V0505/P	VAU 3/4" OMT SEALING CAP	3/4"	100	300	£62.65	€ 84.59
V0490/SF	VAU 1/2" OMS SF/ BRAKE UNCLAPING	1/2"	50	300	£52.20	€ 70.47
V0500/SF	VAU 1/2" OMP/OMR SF/ BRAKE UNCLAPING	1/2"	60	300	£53.25	€ 71.90
V0505/SF	VAU 3/4" OMT SF/ BRAKE UNCLAPING	3/4"	100	300	£62.50	€ 84.37

NB. BRACE UNCLAPING MEANS " A MECHANICAL FAIL SAFE BRAKE "

## SPRINGS

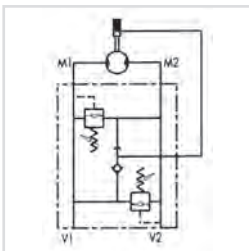
SETTING RANGE BAR	PRESSURE INCREASE ( BAR/TURN)	STANDARD SETTING BAR
10 - 50*	7	30
20 - 100	12	75
10 - 180 (Standard)	30	90
50 - 250	45	130
80 - 300	50	150

\* = For setting less than 70 Bar Q = 12 l/m

FOR SALES  
& ADVICE  
CALL US  
**01584  
876033**

## DUAL CROSS RELIEF VALVE FLANGEABLE ON SAMHYDRAULIK MOTORS AG - AR

www.flowfitonline.com  
TECH. DATA SHEET  
**CV51**



### USE AND OPERATION

Made up by 2 relief valves with crossed tank, this valve is used to block pressure to a certain setting in the 2 ports of an actuator/hydraulic motor. It's ideal to provide protection against sudden shock pressures and to adjust different pressures in the 2 ports of a hydraulic circuit as well. Direct flange is ideal for Samhydraulic motors type AG - AR and provides a maximum safety, very low pressure drops and solid installation.

**Body:** Zinc-plated steel **Internal parts:** Hardened and ground steel, **Seals:** Buna N standard, **Poppet type:** minor leakage

**Applications:** Flange M1 and M2 directly to the motor and connect V1 and V2 to pressure flow.

### ON REQUEST:

Different setting range available (See table below) Other settings available (CODE/T: please specify the desired setting). Brake unclamping (CODE/ SF)

CODE	TYPE	BSP PORTS	MAX FLOW L/MIN	MAX PRESSURE BAR	NETT. PRICE	
					£ STERLING	€ EUROS
V0455	VAU 1/2" AG - AR	1/2"	60	300	£48.57	€ 65.57
V0455/T	VAU 1/2" AG - AR PRESSURE PRESET	1/2"	60	300	£50.77	€ 68.54
V0455/V	VAU 1/2" AG - AR HANDKNOB	1/2"	60	300	£53.03	€ 71.58
V0455/P	VAU 1/2" AG - AR SEALING CAP	1/2"	60	300	£54.16	€ 73.12
V0455/SF	VAU 1/2" AG - AR SF/ BRAKE UNCLAPING	1/2"	60	300	£54.16	€ 73.12

BRAKE UNCLAPING MEANS "A MECHANICAL FAIL SAFE BRAKE"

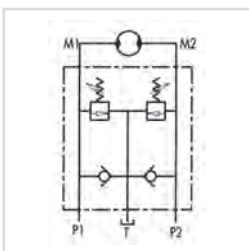
### SPRINGS

SETTING RANGE BAR	PRESSURE INCREASE ( BAR/TURN)	STANDARD SETTING BAR
10 - 50*	7	30
20 - 100	12	75
10 - 180 (Standard)	30	90
50 - 250	45	130
80 - 300	50	150

\* = For setting less than 70 Bar Q = 12 l/m

## DUAL CROSS RELIEF VALVES WITH ANTI-CAVITATION

www.flowfitonline.com  
TECH. DATA SHEET  
**CV52**



### USE AND OPERATION

This valve is used to block pressure to a certain setting in the 2 ports of an hydraulic motor: when it reaches pressure setting, the valve opens allowing pressure relief in T. The relief valve provides overload protection in a fast and accurate way and Cavitation is avoided thanks to the check valve.

**Body:** Zinc-plated steel (VAUAC 1/2") and Aluminium VAUAC 3/4" **Internal parts:** Hardened and ground steel, **Seals:** Buna N standard, **Poppet type:** minor leakage

**Applications:** Flange M1 and M2 directly to the motor and connect P1 and P2 to pressure flow. Connect T to the tank. Mounting by the actuator is highly recommended in order to avoid pressure drops and get prompt duty.

### On Request:

Different setting range available (See table below) Other settings available (CODE/T: please specify the desired setting).

CODE	TYPE	BSP PORTS	MAX FLOW L/MIN	MAX PRESSURE BAR	NETT. PRICE	
					£ STERLING	€ EUROS
V0508	VAUAC 1/2"	1/2"	70	300	£113.90	€ 153.76
V0510	VAUAC 3/4"	3/4"	110	300	£177.30	€ 239.36
V0508/T	VAUAC 1/2" PRESSURE PRESET	1/2"	70	300	£116.14	€ 156.79
V0510/T	VAUAC 3/4" PRESSURE PRESET	3/4"	110	300	£178.91	€ 241.53
V0508/V	VAUAC 1/2" HANDKNOB	1/2"	70	300	£118.39	€ 159.83
V0510/V	VAUAC 3/4" HANDKNOB	3/4"	110	300	£113.01	€ 152.57
V0508/P	VAUAC 1/2" SEALING CAP	1/2"	70	300	£119.51	€ 161.34
V0510/P	VAUAC 3/4" SEALING CAP	3/4"	110	300	£182.30	€ 246.11

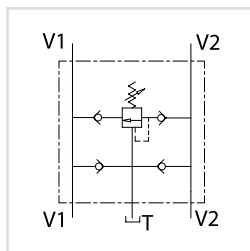
### SPRINGS

SETTING RANGE BAR	PRESSURE INCREASE ( BAR/TURN) Q = 4 L/M	STANDARD SETTING BAR
10 - 180 Standard	30	90
80 - 300	50	150
For VAUAC 3/4"		
20 - 200	40	160
50 - 400 Standard	80	180



## DUAL CROSS RELIEF VALVE WITH ANTI-CAVITATION AND SINGLE ADJUSTMENT

www.flowfitonline.com  
TECH. DATA SHEET  
**CV53**



### USE AND OPERATION:

This valve is used to block pressure to a certain setting in the 2 ports of both hydraulic motor and actuator. The 2 check valves provide overload protection and cavitation is avoided during the slowing down of the actuator.

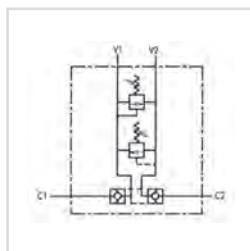
**Body:** zinc-plated steel, **Internal parts:** hardened and ground steel, **Seals:** BUNA N standard, **Tightness:** minor leakage

**Applications:** Connect V1 and V2 ports to the motor, the others V1 and V2 ports to the pressure flow and T to the tank. Mounting by the actuator is highly recommended in order to avoid pressure drops and get a prompt duty.

CODE	TYPE	BSP PORTS	MAX FLOW L/MIN	PRESSURE RANGE BAR	NETT. PRICE	
					£ STERLING	€ EUROS
V0508/RU	VAA/RU 1/2"	1/2"	60	50 - 300	£98.60	€ 133.11

## DUAL CROSS RELIEF VALVES WITH PILOT CHECK VALVE

www.flowfitonline.com  
TECH. DATA SHEET  
**CV54**



### USE AND OPERATION

Made up by 1 double pilot check valve together with one double cross relief valve, this valve enables to block the actuator in one position and to limit inlet pressure to the actuator.

**Body:** Zinc-plated steel **Internal parts:** Hardened and ground steel, **Seals:** Buna N standard, **Poppet type:** minor leakage

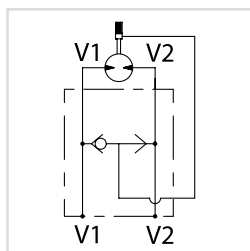
**Applications:** Connect V1 and V2 to the pressure flow and C1 and C2 to the actuator.

**On Request:** Other settings available (CODE/T: please specify the desired setting)

CODE	TYPE	BSP PORTS	MAX FLOW L/MIN	MAX PRESSURE BAR	NETT. PRICE	
					£ STERLING	€ EUROS
V444	VBAU 3/8"	3/8"	35	180	£89.78	€ 121.20
V444/T	VBAU 3/8" PRESSURE PRESET	3/8"	35	180	£92.03	€ 124.23
V444/V	VBAU 3/8" HANDKNOB	3/8"	35	180	£94.44	€ 127.49
V444/P	VBAU 3/8" SEALING CAP	3/8"	35	180	£95.57	€ 129.03

## BRAKE UNCLAMPING VALVE, FLANGEABLE TO DANFOSS MOTORS OMP/OMR

www.flowfitonline.com  
TECH. DATA SHEET  
**CV55**



### USE AND OPERATION:

This valve is used to unlock the motors hydraulic brake.

**Body:** zinc-plated steel, **Internal parts:** hardened and ground steel, **Seals:** BUNA N standard

**Applications:** Flange V1 and V2 to the motor, connect the other side of V1 and V2 to the pressure flow and connect the 1/4" port to the motor brake.

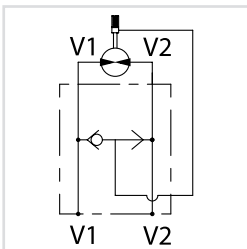
CODE	TYPE	BSP PORTS	MAX FLOW L/MIN	MAX PRESSURE BAR	NETT. PRICE	
					£ STERLING	€ EUROS
V0333	VSBF 1/2" OMP/OMR	1/2"	60	300	£33.94	€ 45.82

## BRAKE UNCLAMPING VALVE, FLANGEABLE TO DANFOSS MOTORS OMS

www.flowfitonline.com

TECH. DATA SHEET

**CV56**



### USE AND OPERATION:

This valve is used to unlock the motors hydraulic brake.

**Body:** zinc-plated steel, **Internal parts:** hardened and ground steel, **Seals:** BUNA N standard

**Applications:** Flange V1 and V2 to the motor, connect the other side of V1 and V2 to the pressure flow and connect the 1/4" port to the motor brake.

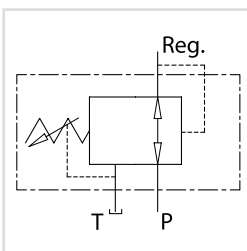
CODE	TYPE	BSP PORTS	MAX FLOW L/MIN	MAX PRESSURE BAR	NETT. PRICE	
					£ STERLING	€ EUROS
V0334	VSBF 1/2" OMS	1/2"	40	300	£32.86	€ 44.37

## PRESSURE REDUCING VALVE, DIRECT ACTING POPPET

www.flowfitonline.com

TECH. DATA SHEET

**CV57**



### USE AND OPERATION:

This valve allows to preserve constant the pressure downstream, regardless of the upstream pressure.

**Body:** zinc-plated steel, **Internal parts:** hardened and ground steel, **Seals:** BUNA N standard, **Tightness:** 70 cc/min (350 Bar to port P)

**Applications:** Connect P to the main circuit, the port Reg. to the circuit where you want to reduce pressure and port T to the tank.

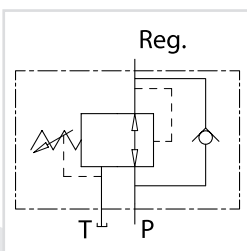
CODE	TYPE	BSP PORTS	MAX FLOW L/MIN	MAX PRESSURE BAR	NETT. PRICE	
					£ STERLING	€ EUROS
V0704/000	VRP 3/8"	3/8"	30	350	£83.24	€ 112.36
V0706/000	VRP 1/2"	1/2"	30	350	£84.29	€ 113.79

## DIRECT ACTING REDUCING VALVE WITH CHECK VALVE

www.flowfitonline.com

TECH. DATA SHEET

**CV58**



### USE AND OPERATION:

This valve allows to preserve constant the pressure downstream, regardless of the upstream pressure. The check valve allows the free return of the oil.

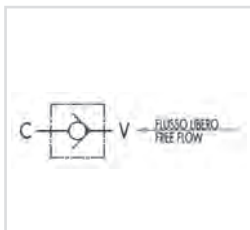
**Body:** zinc-plated steel, **Internal parts:** hardened and ground steel, **Seals:** BUNA N standard, **Tightness:** 70 cc/min (350 Bar to port P)

**Applications:** Connect P to the main circuit, the port Reg. to the circuit where you want to reduce pressure and port T to the tank.

CODE	TYPE	BSP PORTS	MAX FLOW L/MIN	MAX PRESSURE BAR	NETT. PRICE	
					£ STERLING	€ EUROS
V0705/000	VRPRL 3/8"	3/8"	30	350	£118.76	€ 160.32
V0707/000	VRPRL 1/2"	1/2"	30	350	£120.33	€ 162.44

## CHECK VALVES

### CHECK VALVES



#### USE AND OPERATION

In the check valve flow is free in one direction and blocked in the reverse one.

**Body:** Zinc-plated steel **Internal parts:** Hardened and ground steel,

**Seals:** Buna N standard, **Poppet type:** No leakage

**Applications:** Connect V to the pressure flow and C to the actuator. Flow is free from V to C and blocked in the reverse direction.

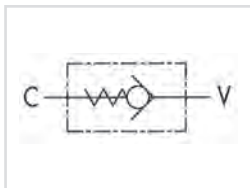
#### On Request:

Different cracking pressures: 1-3-5-8 Bar (Please specify the desired cracking pressure in the product description). Set valve is used to keep a hydraulic system under pressure.

www.flowfitonline.com  
TECH. DATA SHEET  
**CV59**

CODE	TYPE	BSP PORTS	MAX FLOW L/MIN	MAX PRESSURE BAR	CRACKING PRESSURE BAR	NETT. PRICE	
						£ STERLING	€ EUROS
V0592	VU 1/8"	1/8"	3	350	+ 0.4 / 0.7	£10.44	€ 14.10
V0590	VU 1/4"	1/4"	20	350	+ 0.4 / 0.7	£5.01	€ 6.77
V0600	VU 3/8"	3/8"	45	350	+ 0.4 / 0.7	£5.38	€ 7.26
V0610	VU 1/2"	1/2"	70	350	+ 0.4 / 0.7	£7.44	€ 10.04
V0620	VU 3/4"	3/4"	110	350	+ 0.4 / 0.7	£10.95	€ 14.79
V0630	VU 1"	1"	160	350	+ 0.4 / 0.7	£12.95	€ 17.49
V0631	VU 1 1/4"	1 1/4"	200	350	+ 0.4 / 0.7	£32.66	€ 44.09
V0632	VU 1 1/2"	1 1/2"	300	350	+ 0.4 / 0.7	£47.68	€ 64.38

## INTEGRATED CHECK VALVES



#### USE AND OPERATION

In the check valve flow is free in one direction and blocked in the reverse one. Small dimensions and their insert configuration makes these valves ideal for installation into custom designed hydraulic integrated circuit.

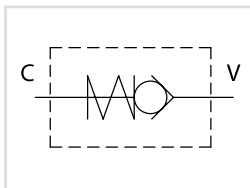
**Body:** Zinc-plated steel. **Exterior Tightness:** Through O-Ring seal.

**Applications:** Screw the valve keeping into consideration that flow is free from V to C.

www.flowfitonline.com  
TECH. DATA SHEET  
**CV60**

CODE	TYPE	BSP PORTS	MAX FLOW L/MIN	MAX PRESSURE BAR	CRACKING PRESSURE BAR	NETT. PRICE	
						£ STERLING	€ EUROS
V0591	VUI 1/4"	1/4"	20	350	0.5	£10.22	€ 13.79
V0601	VUI 3/8"	3/8"	30	350	0.5	£11.61	€ 15.68
V0611	VUI 1/2"	1/2"	50	350	0.5	£14.75	€ 19.92
V0621	VUI 3/4"	3/4"	80	350	0.5	£17.40	€ 23.48

## MALE CHECK VALVES



#### USE AND OPERATION:

In the check valves flow is free in one direction and blocked in the reverse one.

**Body:** zinc-plated steel, **Internal parts:** Hardened and ground steel,

**Poppet type:** any leakage

**Applications:** Connect the port V to the pressure flow and the port C to the actuator. Flow is free from V to C and blocked in the reverse direction.

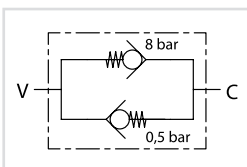
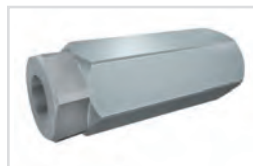
www.flowfitonline.com  
TECH. DATA SHEET  
**CV61**

CODE	TYPE	BSP PORTS	MAX FLOW L/MIN	MAX PRESSURE BAR	NETT. PRICE	
					£ STERLING	€ EUROS
V0594/	VU MM 1/4"	1/4"	8	350	£10.50	€ 14.18
V0604/	VU MM 3/8"	3/8"	20	350	£11.47	€ 15.48
V0614/	VU MM 1/2"	1/2"	50	350	£12.63	€ 17.04
V0624/	VU MM 3/4"	3/4"	90	350	£20.04	€ 27.06
V0634/	VU MM 1"	1"	90	320	£29.69	€ 40.08
V0637/	VU MM 1"1/4	1"1/4	250	320	£52.68	€ 71.13
V0638/	VU MM 1"1/2	1"1/2	300	320	£69.98	€ 94.47
V0639/	VU MM 2"	2"	650	320	£87.58	€ 118.23

## BIDIRECTIONAL CHECK VALVE

[www.flowfitonline.com](http://www.flowfitonline.com)

TECH. DATA SHEET

**CV62**


### USE AND OPERATION:

In the bidirectional check valves flow is controlled in both directions. They are mainly used on presses holding the cylinder and allowing manual movement over 8 Bar in case of emergency.

**Body:** zinc plated steel, **Internal parts:** hardened and ground steel

**Applications:** Connect V or C to the pressure flow according to the adjustment to be obtain.

CODE	TYPE	BSP PORTS	MAX FLOW L/MIN	MAX PRESSURE BAR	CRACKING PRESSURE V-C BAR	CRACKING PRESSURE C-V BAR	NETT. PRICE	
							£ STERLING	€ EUROS
V0606	VRC 3/8"	3/8"	35	350	00,4 / 0,75	8	£46.66	€ 62.99
V0616	VRC 1/2"	1/2"	55	350	0,4 / 0,7	8	£48.77	€ 65.85

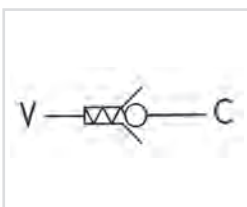
## HOSE BURST VALVES



## HOSE BURST VALVES CARTRIDGE

[www.flowfitonline.com](http://www.flowfitonline.com)

TECH. DATA SHEET

**CV63**


### USE AND OPERATION

These valves are used to prevent uncontrolled decent of a load in case of hose failure. When it exceeds the setting (reaction flow), the valve blocks the flow.

**Body:** Steel, burnished.

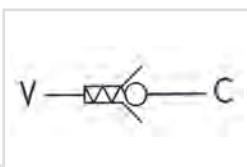
**Applications:** Screw in the valve connecting V to the pressure flow and C to the actuator. Being used with a flow control valve is recommended. (system). Hole on the flat (CODE/F, please specify the hole dimension) for a slow load decent with closed valve. Also available with male-female or female-female body for inline mounting.

CODE	TYPE	BSP PORTS	MAX FLOW L/MIN	MAX PRESSURE BAR	NETT. PRICE	
					£ STERLING	€ EUROS
V0770	VUBA 1/4"	1/4"	25	350	£4.26	€ 5.75
V0780	VUBA 3/8"	3/8"	50	350	£4.26	€ 5.75
V0790	VUBA 1/2"	1/2"	80	350	£4.26	€ 5.75
V0800	VUBA 3/4"	3/4"	140	350	£6.44	€ 8.69
V0810	VUBA 1"	1"	180	350	£12.04	€ 16.25
V0770/F	VUBA 1/4" WITH HOLE	1/4"	25	350	£8.60	€ 11.60
V0780/F	VUBA 3/8" WITH HOLE	3/8"	50	350	£8.82	€ 11.91
V0790/F	VUBA 1/2" WITH HOLE	1/2"	80	350	£10.20	€ 13.76
V0800/F	VUBA 3/4" WITH HOLE	3/4"	140	350	£12.90	€ 17.41
V0810/F	VUBA 1" WITH HOLE	1"	180	350	£19.43	€ 26.22

## HOSE BURST VALVES CARTRIDGE WITH FEMALE/FEMALE THREADED BODY

[www.flowfitonline.com](http://www.flowfitonline.com)

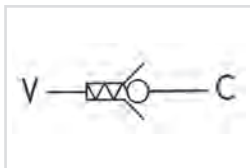
TECH. DATA SHEET

**CV64**


CODE	TYPE	BSP PORTS	MAX FLOW L/MIN	MAX PRESSURE BAR	NETT. PRICE	
					£ STERLING	€ EUROS
V0771	VUBA 1/4" MFF	1/4"	25	350	£6.60	€ 8.91
V0781	VUBA 3/8" MFF	3/8"	50	350	£6.71	€ 9.05
V0791	VUBA 1/2" MFF	1/2"	80	350	£7.96	€ 10.75
V0801	VUBA 3/4" MFF	3/4"	140	350	£11.39	€ 15.39
V0811	VUBA 1" MFF	1"	180	350	£22.59	€ 30.50
V0771/F	VUBA 1/4" MFF/ WITH HOLE	1/4"	25	350	£11.06	€ 14.93
V0781/F	VUBA 3/8" MFF/ WITH HOLE	3/8"	50	350	£11.79	€ 15.92
V0791/F	VUBA 1/2" MFF/ WITH HOLE	1/2"	80	350	£14.59	€ 19.70
V0801/F	VUBA 3/4" MFF/ WITH HOLE	3/4"	140	350	£17.58	€ 23.73
V0811/F	VUBA 1" MFF/ WITH HOLE	1"	180	350	£26.21	€ 35.38

## HOSE BURST VALVES CARTRIDGE WITH MALE/FEMALE THREADED BODY

www.flowfitonline.com  
TECH. DATA SHEET  
**CV65**



CODE	TYPE	BSP PORTS	MAX FLOW L/MIN	MAX PRESSURE BAR	NETT. PRICE	
					£ STERLING	€ EUROS
V0772	VUBA 1/4" MMF	1/4"	25	350	£6.22	€ 8.40
V0782	VUBA 3/8" MMF	3/8"	50	350	£6.33	€ 8.54
V0792	VUBA 1/2" MMF	1/2"	80	350	£7.52	€ 10.15
V0802	VUBA 3/4" MMF	3/4"	140	350	£10.66	€ 14.39
V0812	VUBA 1" MMF	1"	180	350	£21.33	€ 28.79
V0772/F	VUBA 1/4" MMF/ WITH HOLE	1/4"			£11.06	€ 14.93
V0782/F	VUBA 3/8" MMF/ WITH HOLE	3/8"			£11.79	€ 15.92
V0792/F	VUBA 1/2" MMF/ WITH HOLE	1/2"			£13.79	€ 18.62
V0802/F	VUBA 3/4" MMF/ WITH HOLE	3/4"			£16.60	€ 22.41
V0812/F	VUBA 1" MMF/ WITH HOLE	1"			£24.75	€ 33.42

## BODY ONLY - MALE/FEMALE OR FEMALE/FEMALE

www.flowfitonline.com  
TECH. DATA SHEET  
**CV66**



MMF

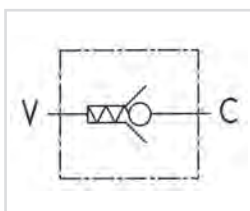


MFF

CODE	TYPE	BSP PORTS	NETT. PRICE	
			£ STERLING	€ EUROS
MFF 1/4"	BODY FEMALE/FEMALE 1/4"	1/4"	£2.32	€ 3.14
MFF 3/8"	BODY FEMALE/FEMALE 3/8"	3/8"	£2.81	€ 3.80
MFF 1/2"	BODY FEMALE/FEMALE 1/2"	1/2"	£4.21	€ 5.68
MFF 3/4"	BODY FEMALE/FEMALE 3/4"	3/4"	£4.44	€ 5.98
MFF 1"	BODY FEMALE/FEMALE 1"	1"	£6.42	€ 8.66
MMF 1/4"	BODY MALE/FEMALE 1/4"	1/4"	£2.32	€ 3.14
MMF 3/8"	BODY MALE/FEMALE 3/8"	3/8"	£2.81	€ 3.80
MMF 1/2"	BODY MALE/FEMALE 1/2"	1/2"	£4.21	€ 5.68
MMF 3/4"	BODY MALE/FEMALE 3/4"	3/4"	£4.44	€ 5.98
MMF 1"	BODY MALE/FEMALE 1"	1"	£6.42	€ 8.66

## HOSE BURST VALVE WITH EXTERNAL ADJUSTMENT

www.flowfitonline.com  
TECH. DATA SHEET  
**CV67**



### USE AND OPERATION

These valves are used to prevent uncontrolled decent of a load in case of hose failure. When it exceeds the setting (reaction flow), the valve blocks the flow. Unlike the standard hose burst valve, it enables external flow adjustment through the knob.

**Body:** Zinc-plated steel. **Internal Components:** Hardened and ground steel. **Tightness:** Ball type.

**Applications:** Connect V to the pressure flow and C to the actuator. To adjust flow (1 turn = 15 litre), keep the nut on the valve to prevent oil leakage.

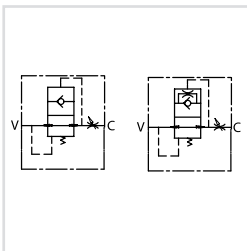
CODE	TYPE	BSP PORTS	MAX FLOW L/MIN	MAX PRESSURE BAR	NETT. PRICE	
					£ STERLING	€ EUROS
V0785	VUB 3/8"	3/8"	40	300	£14.90	€ 20.12
V0795	VUB 1/2"	1/2"	70	300	£15.49	€ 20.91

## DIN ADJUSTABLE HOSE BURST VALVE

www.flowfitonline.com

TECH. DATA SHEET

**CV68**



### USE AND OPERATION:

These valves are used to prevent uncontrolled descent of a load in case of hose failure. When it exceeds the valve setting (reaction flow), the valve blocks the flow.

**Body:** zinc-plated steel, **Flat:** burnished steel

**Applications:** Screw in the valve connecting V to the pressure flow and C to the actuator. The use together with a flow control valve is recommended.

### ON REQUEST:

- Preset hose bursts available (the reaction flow should be set 1,5 times the rate flow of the system). Please specify flow (lt/min) or distance S (mm) from the flat to the valve
- Hole on the flat (CODE/F, please specify hole dimension) for a slow load descent with closed valve

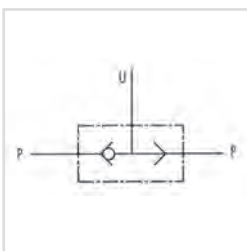
CODE	TYPE	BSP PORTS	MAX FLOW L/MIN	MAX PRESSURE BAR	NETT. PRICE	
					£ STERLING	€ EUROS
V0784	VUBA 3/8" DIN T10L	3/8"	50	350	£7.23	€ 9.75
V0786	VUBA 3/8" DIN T12L	3/8"	50	350	£7.23	€ 9.75
V0787	VUBA 3/8" DIN T15L	3/8"	50	350	£7.23	€ 9.75
V0794	VUBA 1/2" DIN T15L	1/2"	80	350	£7.62	€ 10.29

## SHUTTLE VALVES

www.flowfitonline.com

TECH. DATA SHEET

**CV69**



### USE AND OPERATION

This valve is used to select higher pressure between two pressure lines.

**Body:** Zinc-plated steel. **Seal:** BUNA N.

**Tightness:** Ball type.

**Applications:** Connect ports P to the 2 lines to select and U to the line to feed.

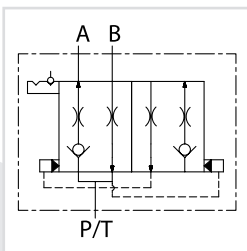
CODE	TYPE	BSP PORTS	MAX FLOW L/MIN	MAX PRESSURE BAR	NETT. PRICE	
					£ STERLING	€ EUROS
V0666	VU2P 1/4"	1/4"	30	450	£11.70	€ 15.78
V0668	VU2P 3/8"	3/8"	45	450	£13.02	€ 17.59
V0670	VU2P 1/2"	1/2"	70	450	£15.07	€ 20.35
V0680	VU2P 3/4"	3/4"	110	350	£30.40	€ 41.04
V0685	VU2P 1"	1"	150	300	£74.31	€ 100.32

## VALVE FOR DRILL

www.flowfitonline.com

TECH. DATA SHEET

**CV70**



### USE AND OPERATION:

This type of valve is used on drills to handle the row marker. It allows the automatic ascent/descent inversion of single and double effect actuators, loading and unloading the port P/T.

**Body:** zinc-plated steel, **Internal parts:** hardened and ground steel, **Seals:** BUNA N standard, **Tightness:** minor leakage

**Applications:** Connect P/T to the power and A and B to the actuator.

**ON REQUEST:** The valve can be supplied with:

- 1/4" female adaptation
- Fitting for DIN 12L hose connection

CODE	TYPE	MAX FLOW L/MIN	NETT. PRICE	
			£ STERLING	€ EUROS
V1450	VDFS 3/4" – 16 UNF	350	£112.38	€ 142.71

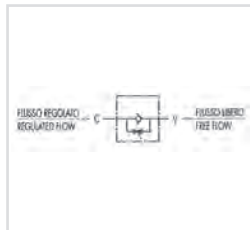


## FLOW REGULATOR VALVES



### BARREL FLOW CONTROL VALVES WITH CHECK

www.flowfitonline.com  
TECH. DATA SHEET  
**CV71**



#### USE AND OPERATION

This valve is used to adjust flow speed of actuators in one direction; flow is free in reverse one. As pressure compensation is not provided, flow adjustment depends on pressure and oil viscosity.

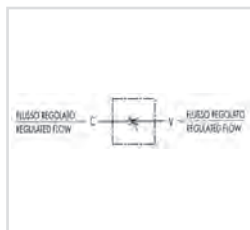
**Body:** Zinc-plated steel **Internal parts:** Hardened and ground steel, **Seals:** Buna N standard, **Tightness:** By diameter combination. Minor leakage with closed valve.

**Applications:** Connect V to the pressure flow and C to the actuator to set. The flow is adjusted from C to V and free in the reverse direction. When used on actuator with double pilot check valve, VRF has to be mounted between the actuator and the double pilot check valve. Flow adjustment is made by rotating the coupling: by clockwise rotation flow increases and vice versa. Once the flow has been set, lock the nut in order to keep the desired settings, even case of vibrations.

CODE	TYPE	BSP PORTS	MAX FLOW L/MIN	MAX PRESSURE BAR	CRACKING PRESSURE BAR	NETT. PRICE	
						£ STERLING	€ EUROS
V0540	VRF 1/4"	1/4"	20	300	0.5	£14.60	€ 19.72
V0550	VRF 3/8"	3/8"	45	300	0.5	£16.50	€ 22.27
V0560	VRF 1/2"	1/2"	70	300	0.5	£21.12	€ 28.52
V0570	VRF 3/4"	3/4"	110	250	0.5	£30.78	€ 41.55
V0580	VRF 1"	1"	160	250	0.5	£46.52	€ 62.80

### BARREL FLOW CONTROL VALVES NO CHECK

www.flowfitonline.com  
TECH. DATA SHEET  
**CV72**



#### USE AND OPERATION

This valve is used to adjust flow speed of actuators in both directions. As pressure compensation is not provided, flow adjustment depends on pressure and oil viscosity.

**Body:** Zinc-plated steel **Internal parts:** Hardened and ground steel, **Seals:** Buna N standard, **Tightness:** By diameter combination. Minor leakage with closed valve.

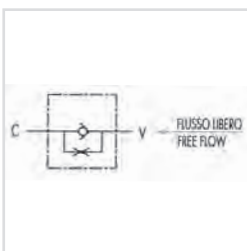
**Applications:** Connect V to the pressure flow and C to the actuator to set; when used on an actuator with double pilot check, VRB has to be mounted between the actuator and the double pilot check valve. Flow adjustment is made by rotating the coupling: by clockwise rotation flow increases and vice versa. Once the flow has been set, lock the nut in order to keep the desired settings even in case of vibrations.

CODE	TYPE	BSP PORTS	MAX FLOW L/MIN	MAX PRESSURE BAR	NETT. PRICE	
					£ STERLING	€ EUROS
V0545	VRB 1/4"	1/4"	20	300	£12.79	€ 17.27
V0555	VRB 3/8"	3/8"	45	300	£13.33	€ 17.99
V0565	VRB 1/2"	1/2"	70	300	£15.90	€ 21.46
V0575	VRB 3/4"	3/4"	110	250	£31.69	€ 42.77
V0585	VRB 1"	1"	160	250	£56.42	€ 76.16



## FIXED SETTING THROTTLE CHECK VALVES

www.flowfitonline.com  
TECH. DATA SHEET  
**CV73**



### USE AND OPERATION

Flow is free in one direction and fixed in the reverse one. Flow is fixed as flow adjustment depends on the throttling hole diameter.

**Body:** Zinc-plated steel **Internal parts:** Hardened and ground steel, **Seals:** Buna N standard, **Poppet type:** Standard

**Applications:** Connect V to the pressure flow and C to the actuator. Flow is free from V to C and fixed in the reverse one. Throttling is obtained through one or two calibrated holes, the diameter of which has to be specified in the order.

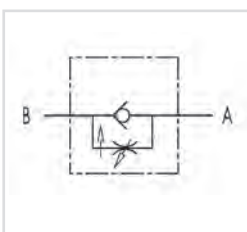
### On Request:

Other settings available: 1-3-5-8 Bar ( please specify in the description the desired setting).

CODE	TYPE	BSP PORTS	MAX FLOW L/MIN	MAX PRESSURE BAR	CRACKING PRESSURE BAR	NETT. PRICE	
						£ STERLING	€ EUROS
V0590/1F	VUSF 1/4" WITH 1 HOLE	1/4"	20	350	+ 0.4 / 0.7	£6.09	€ 8.22
V0600/1F	VUSF 3/8" WITH 1 HOLE	3/8"	45	350	+ 0.4 / 0.7	£6.59	€ 8.90
V0610/1F	VUSF 1/2" WITH 1 HOLE	1/2"	70	350	+ 0.4 / 0.7	£8.87	€ 11.97
V0620/1F	VUSF 3/4" WITH 1 HOLE	3/4"	110	350	+ 0.4 / 0.7	£12.82	€ 17.30
V0630/1F	VUSF 1" WITH 1 HOLE	1"	160	350	+ 0.4 / 0.7	£14.99	€ 20.24
V0631/1F	VUSF 1 1/4" WITH 1 HOLE	1 1/4"	200	350	1	£51.96	€ 70.15
V0632/1F	VUSF 1 1/2" WITH 1 HOLE	1 1/2"	300	350	1	£69.97	€ 94.46
V0590/2F	VUSF 1/4" WITH 2 HOLES	1/4"	20	350	+ 0.4 / 0.7	£6.24	€ 8.42
V0600/2F	VUSF 3/8" WITH 2 HOLES	3/8"	45	350	+ 0.4 / 0.7	£6.81	€ 9.20
V0610/2F	VUSF 1/2" WITH 2 HOLES	1/2"	70	350	+ 0.4 / 0.7	£9.06	€ 12.24
V0620/2F	VUSF 3/4" WITH 2 HOLES	3/4"	110	350	+ 0.4 / 0.7	£13.17	€ 17.78
V0630/2F	VUSF 1" WITH 2 HOLES	1"	160	350	+ 0.4 / 0.7	£15.48	€ 20.90
V0631/2F	VUSF 1 1/4" WITH 2 HOLES	1 1/4"	200	350	1	£53.48	€ 72.20
V0632/2F	VUSF 1 1/2" WITH 2 HOLES	1 1/2"	300	350	1	£72.01	€ 97.21

## 90° PRESSURE COMPENSATED 90° FLOW REGULATOR VALVES

www.flowfitonline.com  
TECH. DATA SHEET  
**CV74**



### USE AND OPERATION

This valve is used to adjust flow speed of actuators in one direction; flow is free in the reverse one. The internal compensation system allows to keep a constant speed even when the load varies. High adjustment sensitivity.

**Body:** Zinc-plated steel **Internal parts:** Hardened and ground steel, **Seals:** Buna N standard, **Tightness:** Needle type

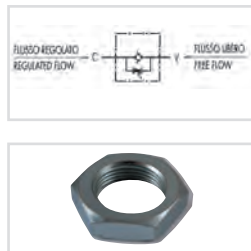
**Applications:** Connect A to the pressure flow and B to the actuator to set; flow is adjusted from B to A and is free in the reverse direction. Flow adjustment is made by rotating the plastic hand knob after loosening the side locking screw. This particular configuration allows an accurate and sensitive adjustment.

CODE	TYPE	BSP PORTS	MAX FLOW FROM A TO B L/MIN	MAX FLOW FROM B TO A L/MIN	MAX PRESSURE BAR	NETT. PRICE	
						£ STERLING	€ EUROS
V0581/C	VRFU 90° 1/4" PCFCV	1/4"	15	25	250	£46.52	€ 62.80
V0582/C	VRFU 90° 3/8" PCFCV	3/8"	15	25	250	£47.23	€ 63.76
V0583/C	VRFU 90° 1/2" PCFCV	1/2"	30	45	250	£71.57	€ 96.62

FOR SALES  
& ADVICE  
CALL US  
**01584  
876033**

## FLOW REGULATOR VALVES WITH CHECK

www.flowfitonline.com  
TECH. DATA SHEET  
**CV75**



### USE AND OPERATION

This valve is used to adjust flow speed of actuators in one direction; flow is free in the reverse one. As pressure compensation is not provided, flow adjustment depends on pressure and fluid viscosity. High adjustment sensitivity.

**Body:** Zinc-plated steel **Internal parts:** Hardened and ground steel, **Seals:** Buna N standard, **Tightness:** Needle type, Minor leakage with closed valve.

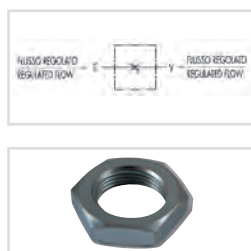
**Applications:** Connect V to the pressure flow and C to the actuator to set; flow is adjusted from C to V and is free in the reverse direction. When used on actuator with double pilot check valve, VRFU has to be mounted between the actuator and the double pilot check valve. Flow adjustment is made by rotating the aluminium hand knob after loosening the side locking screw. This configuration allows an accurate and sensitive adjustment.

CODE	TYPE	BSP PORTS	MAX FLOW L/MIN	MAX PRESSURE BAR	CRACKING PRESSURE BAR	NETT. PRICE	
						£ STERLING	€ EUROS
V0581	VRFU 1/4"	1/4"	15	350	0.5	£20.63	€ 27.84
V0582	VRFU 3/8"	3/8"	30	350	0.5	£23.10	€ 31.18
V0583	VRFU 1/2"	1/2"	50	350	0.5	£29.02	€ 39.17
V0588	VRFU 3/4"	3/4"	60	280	0.5	£52.65	€ 71.07
V0576	VRFU 1"	1"	80	250	0.5	£85.75	€ 115.77

CODE	DESCRIPTION	NETT. PRICE	
		£ STERLING	€ EUROS
DAD090	Locking Nut to suit V0581/V0582/V0583	£2.14	€ 2.89

## FLOW CONTROL VALVES WITHOUT CHECK

www.flowfitonline.com  
TECH. DATA SHEET  
**CV76**



### USE AND OPERATION

This valve is used to adjust flow speed of actuators in both directions. As pressure compensation is not provided, flow adjustment depends on pressure and fluid viscosity. High adjustment sensitivity.

**Body:** Zinc-plated steel **Internal parts:** Hardened and ground steel, **Seals:** Buna N standard, **Tightness:** Needle type, Minor leakage with closed valve.

**Applications:** Connect a port to the pressure. Flow will be adjusted in the other one. When used on actuator with double pilot check valve, VRFB has to be mounted between the actuator and the double pilot check valve. Flow adjustment is made by rotating the aluminium hand knob after loosening the side locking screw. This particular configuration allows an accurate and sensitive adjustment.

CODE	TYPE	BSP PORTS	MAX FLOW L/MIN	MAX PRESSURE BAR	NETT. PRICE	
					£ STERLING	€ EUROS
V0584	VRFB 1/4"	1/4"	15	350	£15.68	€ 21.17
V0586	VRFB 3/8"	3/8"	30	350	£21.05	€ 28.41
V0587	VRFB 1/2"	1/2"	50	350	£22.72	€ 30.68
V0589	VRFB 3/4"	3/4"	80	280	£42.99	€ 58.04
V0577	VRFB 1"	1"	80	250	£89.99	€ 121.48

CODE	DESCRIPTION	NETT. PRICE	
		£ STERLING	€ EUROS
DAD090	Locking Nut to suit V0584/86/87/89	£2.14	€ 2.89

## HYDRAULIC 3 PORT PRESSURE COMPENSATED ADJUSTABLE FLOW CONTROL

www.flowfitonline.com  
TECH. DATA SHEET  
**CV77**



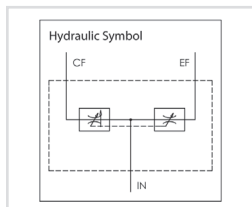
The Flowfit hydraulic 3 port adjustable flow control valve will start or stop a hydraulic cylinder or hydraulic motor and vary speed over a wide range. Once the flow control lever has been positioned a constant speed will be maintained.

Excess flow is returned to tank or used to power another function via port 'ef'.  
In = input flow, cf = controlled flow and ef = excess flow

The flow control valve is pressure compensated to maintain a constant output flow despite pressure changes on the controlled flow or excess flow line or load variations.

### SPECIFICATIONS

- 3000 Psi Max Operating Pressure
- Max Flow Capacity: 30gpm / 114l/Min
- Side Port Configuration
- Once Set, Maintains Constant Speed Regardless Of Load Variation
- Excess Flow Is Returned To Tank Or Used To Power Another Function
- All Ports 3/4" Bsp
- Plugging 'Ef' Excess Flow Port Allows Use With Pressure Compensated Pumps
- Both Outlets Are Pressure Compensated



PART NUMBER	DESCRIPTION	PORT SIZE	FLOW RANGE	NETT. PRICE	
				£ STERLING	€ EUROS
ZZ005422	3/4" 3 PORT FLOW CONTROL	3/4" BSP	0-30 GPM	£58.95	€ 79.57

## HYDRAULIC 3 PORT PRESSURE COMPENSATED ADJUSTABLE FLOW CONTROL C/W RELIEF VALVE

www.flowfitonline.com  
TECH. DATA SHEET  
**CV78**



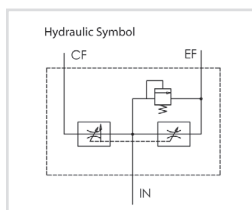
The Flowfit hydraulic 3 port adjustable flow control valve will start or stop a hydraulic cylinder or hydraulic motor and vary speed over a wide range. Once the flow control lever has been positioned a constant speed will be maintained.

Excess flow is returned to tank only via port 'ef'.  
In = input flow, cf = controlled flow and ef = excess flow

The flow control valve is pressure compensated to maintain a constant output flow despite pressure changes on the controlled flow 'CF' port.

### SPECIFICATIONS

- 3000 Psi Max Operating Pressure
- Max Flow Capacity: 30gpm / 114l/Min
- Side Port Configuration
- Once Set, Maintains Constant Speed Regardless Of Load Variation
- Excess Flow Is Returned To Tank Only
- All Ports 3/4" Bsp
- Plugging 'Ef' Excess Flow Port Allows Use With Pressure Compensated Pumps
- Adjustable Relief Preset At 2500psi
- Relief Valve Adjustable 1000 To 3000psi

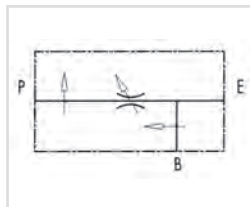
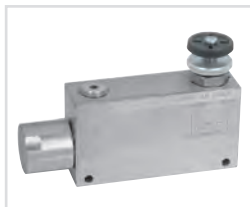


PART NUMBER	DESCRIPTION	PORT SIZE	FLOW RANGE	NETT. PRICE	
				£ STERLING	€ EUROS
ZZ005423	3/4" 3 PORT FLOW CONTROL C/W RV	3/4" BSP	0-30 GPM	£58.95	€ 79.57



## 3 PORT FLOW CONTROL VALVE WITH ONGOING PRESSURE LINE

www.flowfitonline.com  
TECH. DATA SHEET  
**CV79**



### USE AND OPERATION

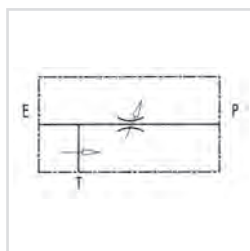
This valve enables to keep "P" flow constant to a certain setting, independently of the required pressure or the inlet flow of the valve. Exceeded flow is drained in "B" and it is available for a second use. Also port "B" is insensitive to pressure changes, but not to flow changes.

**Body:** Zinc-plated steel **Internal parts:** Hardened and ground steel, **Seals:** Buna N standard, **Tightness:** By diameter combination. Minor leakage (few drops per minute) is needed. Connect B to the tank or to a second actuator. To adjust inlet pressure in P screw in or out, hand wheel, after loosening the locknut.

CODE	TYPE	BSP PORTS	MAX FLOW L/MIN	MAX ADJUSTED FLOW	MAX PRESSURE BAR	NETT. PRICE	
						£ STERLING	€ EUROS
V1060	VRP3 3/8"	3/8"	50	40	250	£90.18	€ 121.74
V1070	VRP3 1/2"	1/2"	85	60	250	£90.96	€ 122.80
V1080	VPR 3/4"	3/4"	150	90	210	£157.44	€ 212.55
V1090	VPR 1"	1"	250	150	210	£191.79	€ 258.91

## 3 PORT FLOW CONTROL VALVE WITH EXCESS BACK TO TANK

www.flowfitonline.com  
TECH. DATA SHEET  
**CV80**



### USE AND OPERATION

This valve enables to keep "P" flow constant to a certain setting, independently of the required pressure or the inlet flow of the valve. Exceeded flow is drained directly in T (tank).

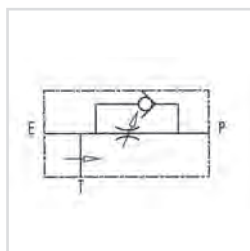
**Body:** Zinc-plated steel **Internal parts:** Hardened and ground steel, **Seals:** Buna N standard, **Tightness:** By diameter combination. Minor leakage (few drops per minute)

**Applications:** Connect E to the pressure and P to the line where flow adjustment is needed.. Connect T to the tank. To adjust inlet pressure in P screw in or out, hand wheel, after loosening the locknut.

CODE	TYPE	BSP PORTS	MAX FLOW L/MIN	MAX ADJUSTED FLOW	MAX PRESSURE BAR	NETT. PRICE	
						£ STERLING	€ EUROS
V1110	RFP3 3/8"	3/8"	50	30	250	£79.68	€ 107.58
V1120	RFP 1/2"	1/2"	85	50	250	£84.12	€ 113.56
V9999	VCF.BC.3/2A06B	3/4"	150	90	210	£179.45	€ 242.27

## 3 PORT FLOW CONTROL VALVE WITH EXCESS TO TANK WITH CHECK VALVE

www.flowfitonline.com  
TECH. DATA SHEET  
**CV81**



### USE AND OPERATION

This valve enables to keep "P" flow constant to a certain setting, independently of the required pressure or the inlet flow of the valve. Exceeded flow is drained directly in T (tank). The check valve allows those applications where we require the return of the free flow.

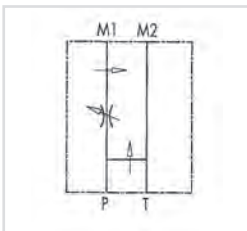
**Body:** Zinc-plated steel **Internal parts:** Hardened and ground steel, **Seals:** Buna N standard, **Tightness:** By diameter combination. Minor leakage (few drops per minute)

**Applications:** Connect E to the pressure and P to the line where flow adjustment is needed. Connect T to the tank. To adjust inlet pressure in P screw in or out, hand wheel, after loosening the locknut.

CODE	TYPE	BSP PORTS	MAX INLET FLOW L/MIN	MAX ADJUSTED FLOW L/MIN	MAX PRESSURE BAR	NETT. PRICE	
						£ STERLING	€ EUROS
V1110/VU	RFP3 3/8" c/VU	3/8"	50	30	350	£98.13	€ 132.47
V1120/VU	RFP3 1/2" c/VU	1/2"	85	50	350	£98.90	€ 133.51

## 3 PORT FLOW CONTROL VALVE EXCESS TO TANK FLANGEABLE ON DANFOSS MOTORS OMP/OMR

www.flowfitonline.com  
TECH. DATA SHEET  
**CV82**



### USE AND OPERATION

This valve enables to keep "P" flow constant to a certain setting, independently of the required pressure or the inlet flow of the valve. Exceeded flow is drained directly in T (tank).

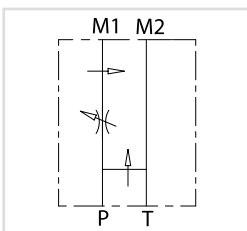
**Body:** zinc-plated steel, **Internal parts:** Hardened and ground steel, **Seals:** Buna N standard, **Tightness:** By diameter combination. Minor leakage (few drops per minute)

**Applications:** Connect M1 and M2 to the motor and P and T to the pressure.

PART NO.	TYPE	BSP PORTS	MAX INLET FLOW	MAX ADJUSTED FLOW	MAX PRESSURE (BAR)	NETT. PRICE	
						£ STERLING	€ EUROS
V1121	RFP3 1/2" OMP/OMR	1/2"	50 L/MIN	30 L/MIN	350	£89.14	€ 120.34

## 3 PORT FLOW CONTROL VALVE EXCESS TO TANK FLANGEABLE ON DANFOSS MOTORS OMS

www.flowfitonline.com  
TECH. DATA SHEET  
**CV83**



### USE AND OPERATION:

This valve enables to keep "P" flow constant to a certain setting, independently of the required pressure or the inlet flow of the valve. Exceeded flow is drained directly in T (tank).

**Body:** zinc-plated steel, **Internal parts:** hardened and ground steel, **Seals:** BUNA N standard, **Tightness:** by diameter combination. Minor leakage (few drops per minute)

**Applications:** Connect M1 and M2 to the motor and P and T to the pressure.

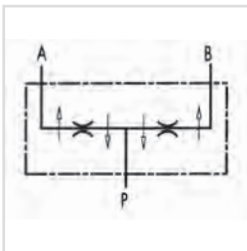
PART NO.	TYPE	BSP PORTS	MAX INLET FLOW	MAX ADJUSTED FLOW	MAX PRESSURE (BAR)	NETT. PRICE	
						£ STERLING	€ EUROS
V1122	RFP3 1/2" OMS	1/2"	50	30	350	£92.24	€ 124.52

## FLOW DIVIDERS



### 2 WAY FLOW DIVIDER

www.flowfitonline.com  
TECH. DATA SHEET  
**CV84**



### USE AND OPERATION

These valves allow the division of inlet flow into two equal parts (50/50) and they unify in the reverse direction, independently of ant pressure changes and flow. These valves are used when two equal actuators, that are not mechanically coupled, supplied by the same pump and controlled by a single distributor, must move simultaneously both at input and output.

**Body:** cast iron / steel, **Internal Parts:** Hardened and ground steel, **Seals:** BUNA N standard and Teflon, **Tightness:** By diameter combination. Cylinder stroke error tolerance of 2%. Any synchronisation differences are compensated by the terminal position of the stroke.

**Applications:** Connect P to the pressure flow and A and B to the actuators.

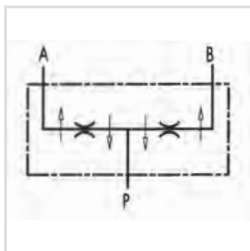
CODE	TYPE	BSP PORTS	MIN. FLOW * L/MIN	MAX. FLOW * L/MIN	WORKING PRESS. BAR	PEAK PRESS. BAR	NETT. PRICE	
							£ STERLING	€ EUROS
V1001	V-EQ 8	3/8"	1	3	250	300	£148.40	€ 200.35
V1000	V-EQ 10	3/8"	3	6	250	300	£137.65	€ 185.82
V1002	V-EQ 15	3/8"	6	10	250	300	£137.65	€ 185.82
V1003	V-EQ 20	3/8"	10	20	250	300	£137.65	€ 185.82
V1004	V-EQ 22	3/8"	20	32	250	300	£137.65	€ 185.82
V1005	V-EQ 25	1/2"	25	40	250	300	£139.47	€ 188.29
V1006	V-EQ 30	1/2"	40	60	250	300	£139.47	€ 188.29
V1007	V-EQ 50	1/2"	60	80	250	300	£148.40	€ 200.35

\* = Capacity values refers to input P



## STEEL FLOW DIVIDERS

www.flowfitonline.com  
TECH. DATA SHEET  
**CV85**



### USE AND OPERATION

These valves allow the division of inlet flow into two equal parts (50/50) and they unify in the reverse direction, irrespective of any pressure differences and flow. These valves are used when two equal actuators, that are not mechanically coupled, supplied by the same pump and controlled by a single distributor, must move simultaneously both at input and output.

**Body:** Zinc plated steel. **Internal Parts:** Hardened and ground steel. **Seals:** BUNA N standard and Teflon.

**Tightness:** By diameter combination. Minor leakage

**Applications:** Connect P to the pressure flow and A and B to the actuators.

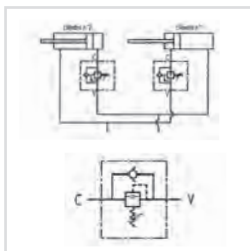
CODE	TYPE	BSP PORTS		MIN FLOW L/MIN	WORKING PRESSURE BAR	PEAK PRESSURE BAR	NETT. PRICE	
		P	A+B				£ STERLING	€ EUROS
V1022	DFL6-10	3/8"	3/8"	10	250	300	£105.20	€ 142.02
V1023	DFL10-20	3/8"	3/8"	20	250	300	£105.20	€ 142.02
V1025	DFL25-40	1/2"	3/8"	40	250	300	£105.20	€ 142.02

## SEQUENCE VALVES



### DIRECT ACTING SEQUENCE VALVES

www.flowfitonline.com  
TECH. DATA SHEET  
**CV86**



### USE AND OPERATION

Sequence valve is used to feed 2 cylinders in sequence: it provides flow to the secondary circuit when a primary circuit function has been completed reaching the pressure setting. Return flow is free. It's ideal for circuit with low pressure on the secondary actuator as the pressure adds to it.

**Body:** Zinc-plated steel **Internal parts:** Hardened and ground steel, **Seals:** Buna N standard, **Tightness:** Minor leakage.

**Applications:** For use with 2 actuators, follow the mounting instructions indicated in the scheme. For different uses, mount the valve keeping consideration that, when the valve reaches the setting pressure, the flow goes from V towards C, whilst flow is free from C to V.

### On Request:

Different setting range (see the table). Other settings available (CODE/T: please specify the desired setting)

CODE	TYPE	BSP PORTS	MAX FLOW L/MIN	MAX PRESSURE BAR	NETT. PRICE	
					£ STERLING	€ EUROS
V0640	VS2C 3/8"	3/8"	35	350	£36.00	€ 48.59
V0660	VS2C 1/2"	1/2"	70	350	£36.00	€ 48.59
V0665	VS2C 3/4"	3/4"	110	350	£84.62	€ 114.23
V0640/T	VS2C 3/8" PRESSURE PRESET	3/8"	35	350	£33.62	€ 45.39
V0660/T	VS2C 1/2" PRESSURE PRESET	1/2"	70	350	£40.28	€ 54.38
V0665/T	VS2C 3/4" PRESSURE PRESET	3/4"	110	350	£85.74	€ 115.75
V0640/V	VS2C 3/8" HANDKNOB	3/8"	35	350	£34.75	€ 46.93
V0660/V	VS2C 1/2" HANDKNOB	1/2"	70	350	£41.48	€ 56.00
V0665/V	VS2C 3/4" HANDKNOB	3/4"	110	350	£86.89	€ 117.30
V0640/P	VS2C 3/8" SEALING CAP	3/8"	35	350	£35.33	€ 47.69
V0660/P	VS2C 1/2" SEALING CAP	1/2"	70	350	£42.06	€ 56.79
V0665/P	VS2C 3/4" SEALING CAP	3/4"	110	350	£87.44	€ 118.03

### SPRINGS

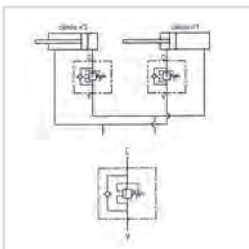
SETTING RANGE BAR	PRESSURE INCREASE( BAR/TURN) Q = 4 L/M	STANDARD SETTING BAR
10 - 50*	7	30
20 - 100	12	75
10 - 180 (Standard)	30	90
50 - 250	45	130
80 - 300	50	150
SETTING RANGE BAR	PRESSURE INCREASE( BAR/TURN) Q = 4 L/M	STANDARD SETTING BAR
20-200	40	160
50-400 (Standard)	80	180

## SEQUENCE VALVES

www.flowfitonline.com

TECH. DATA SHEET

**CV87**



### USE AND OPERATION

Sequence valve is used to feed 2 cylinders in sequence: it provides flow to the secondary circuit when a primary circuit function has been completed reaching the pressure setting. Return flow is free. Being insensitive to back pressures, it allows to use the circuit pressure to control both the actuators.

**Body:** Zinc-plated steel **Internal parts:** Hardened and ground steel, **Seals:** Buna N standard, **Tightness:** Minor leakage.

**Applications:** For use with 2 actuators, follow the mounting instructions indicated in the scheme. For different uses, mount the valve keeping consideration that, when the valve reaches the setting pressure, the flow goes from V towards C, whilst flow is free from C to V.

### On Request:

Different setting range (see the table). Other settings available (CODE/T: please specify the desired setting)

CODE	TYPE	BSP PORTS	MAX FLOW L/MIN	MAX PRESSURE BAR	NETT. PRICE	
					£ STERLING	€ EUROS
V0642	VSQAPP 3/8"	3/8"	35	250	£45.66	€ 61.65
V0662	VSQAPP 1/2"	1/2"	70	250	£53.19	€ 71.80
V0642/T	VSQAPP 3/8" PRESSURE PRESET	3/8"	35	250	£46.90	€ 63.32
V0662/T	VSQAPP 1/2" PRESSURE PRESET	1/2"	70	250	£54.46	€ 73.53
V0642/V	VSQAPP 3/8" HANDKNOB	3/8"	35	250	£48.07	€ 64.90
V0662/V	VSQAPP 1/2" HANDKNOB	1/2"	70	250	£55.63	€ 75.10
V0642/P	VSQAPP 3/8" SEALING CAP	3/8"	35	250	£48.66	€ 65.69
V0662/P	VSQAPP 1/2" SEALING CAP	1/2"	70	250	£56.18	€ 75.84

### SPRINGS

SETTING RANGE BAR	PRESSURE INCREASE (BAR/TURN) Q = 4 L/M	STANDARD SETTING BAR
10 - 50*	7	30
20 - 100	12	75
10 - 180 (Standard)	30	90
50 - 250	45	130
80 - 300	50	150

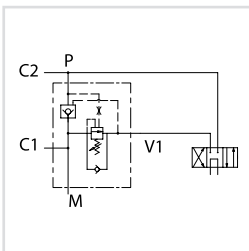
\* = For setting less than 70 Bar Q = 12 l/m

## REGENERATIVE VALVE

www.flowfitonline.com

TECH. DATA SHEET

**CV88**



### USE AND OPERATION:

This valve allows to recover the oil from the rod to port C1 and to send it to the bottom valve through the port P, adding it to the pump flow rate. When the pressure in the bottom valve of the cylinder achieves the setting value, oil from the rod is sent to the tank through port V1, restoring a non-regenerative system with maximum thrust. The exclusion pressure of the regenerative depends only on the pressure in the bottom valve of the cylinder.

**Body:** zinc-plated steel. **Internal parts:** hardened and ground steel. **Seals:** BUNA N standard. **Tightness:** minor leakage

**Applications:** Connect C1 to the cylinder stem, V1 to the pressure flow, P to the cylinder bottom valve and to the pressure flow at the same time, M to the manometer if there is.

CODE	TYPE	BSP PORTS	PILOT RATIO	MAX FLOW L/MIN	MAX PRESSURE BAR	NETT. PRICE	
						£ STERLING	€ EUROS
V1220	VRSP 1/2"	1/2"	1:4,5	60	60 - 350	£93.30	€ 125.96
V1230	VRSP 3/4"	3/4"	1:5,5	95	60 - 350	£119.80	€ 161.74

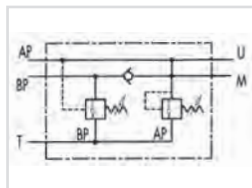
FOR SALES  
& ADVICE  
CALL US  
**01584  
876033**

## TWO PUMP "HI-LOW" UNLOADING VALVES



### TWO PUMP "HI - LOW" UNLOADING VALVES

www.flowfitonline.com  
TECH. DATA SHEET  
**CV89**



#### USE AND OPERATION

This valve is used in a 2 parallel-working pumps circuit in order to release the excess of the higher flow pump to the tank when this gets the required pressure setting. Since this moment and on, the actuator works with the lower flow pump at higher pressure, consuming less energy.

**Body:** Zinc-plated steel **Internal parts:** Hardened and ground steel, **Seals:** Buna N standard, **Tightness:** Minor leakage.

**Applications:** Connect BP to the higher flow pump, AP to the lower flow pump, T to the tank, M to the eventual manometer and U as for necessity.

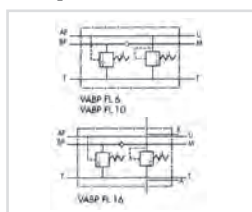
CODE	TYPE	BSP PORTS	MAX FLOW L/MIN			MAX PRESSURE BAR	NETT. PRICE	
			AP	BP	T		£ STERLING	€ EUROS
V0512	VABP 3/8"	3/8"	15	30	40	350	£116.81	€ 157.70
V0513	VABP 1/2"	1/2"	25	45	65	350	£161.19	€ 217.60
V0514	VABP 3/4"	3/4"	30	80	100	350	£166.54	€ 224.82

#### STANDARD SPRINGS

VALVE	BP (BAR)	AP (BAR)
VABP 3/8"	20-120	50-350
VABP 1/2"	20-120	50-350
VABP 3/4"	20-100	50-330

## TWO PUMP "HI-LOW" UNLOADING VALVES FLANGEABLE (BASE NG6-NG10 AND NG16)

www.flowfitonline.com  
TECH. DATA SHEET  
**CV90**



#### USE AND OPERATION

This valve is used in a 2 parallel-working pumps circuit in order to release the excess of the higher flow pumps to the tank when this gets the required pressure setting. Since this moment and on, the actuator works with the lower flow pumps at higher pressure, consuming less energy. It is ideal for direct flange-mounting on solenoid valves.

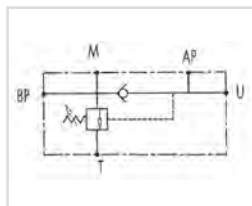
**Body:** Zinc-plated steel **Internal parts:** Hardened and ground steel, **Seals:** Buna N standard, **Tightness:** Minor leakage.

**Applications:** Fix the valve to the pressure flow by connecting BP to the higher flow pumps, AP to the lower flow pumps, T to the tank and M to the eventual manometer. Flange the solenoid valve to the VABP and connect A and B to the actuator.

CODE	TYPE	MAX FLOW L/MIN			MAX PRESSURE BAR	NETT. PRICE	
		AP	BP	T		£ STERLING	€ EUROS
V0518	VABP FL 6 NG6	15	30	40	350	£174.88	€ 236.10
V0515	VABP FL 10 NG10	20	45	60	350	£193.42	€ 261.11
V0516	VABP FL 16 NG16	35	80	100	350	£376.09	€ 507.72

## TWO PUMP "HI-LOW" UNLOADING VALVES FLANGEABLE ON LOW-PRESSURE PUMP

www.flowfitonline.com  
TECH. DATA SHEET  
**CV91**



#### USE AND OPERATION

This valve is used in a 2 parallel-working pumps circuit in order to release the excess of the higher flow pump to tank when this gets the required pressure setting. Since this moment and on the actuator works with the lower flow pumps at higher pressure, consuming less energy. This valve is designed for direct flanging on lower flow pump. To adjust the high pressure, you have to mount an inline relief valve.

**Body:** Zinc-plated steel **Internal parts:** Hardened and ground steel, **Seals:** Buna N standard, **Tightness:** Minor leakage.

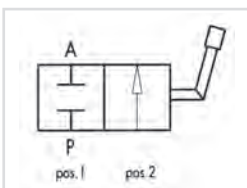
**Applications:** Connect BP to the higher flow pump, AP to the lower flow pump, T to the tank, M to the eventual manometer and U as for necessity.

CODE	TYPE	BSP PORTS	MAX FLOW L/MIN			MAX PRESSURE		MAX PRESSURE BAR	WEIGHT	NETT. PRICE	
			AP	BP	T	AP	BP			£ STERLING	€ EUROS
V0517	VEP FLP 1/2"	1/2"	15	45	55	350	80	350	2.5	£72.62	€ 98.04

## HIGH PRESSURE BALL VALVES



### 2 WAY BALL VALVES



#### USE AND OPERATION

These valves are used to open or close oil flow in a circuit even with maximum pressure.

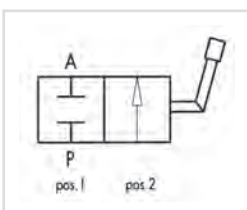
**Body:** Zinc-plated steel **Internal parts:** Hardened and ground steel, **Seals:** Buna N standard and POM seals, **Tightness:** No leakage.

**Applications:** Connect either A or P to the ports where flow has to be blocked. Flow is blocked with lever at 90 deg (position 1) and free with lever in line (position 2). On Request: Fixing holes (CODE / FF).

www.flowfitonline.com  
TECH. DATA SHEET  
**CV92**

CODE	TYPE	BSP PORTS	MAX FLOW L/MIN	MAX PRESSURE BAR	NETT. PRICE	
DIN/ISO 228 BSP FEMALE CONNECTION					£ STERLING	€ EUROS
V0830	RS 2 VIE 1/4"	1/4"	25	500	£9.49	€ 12.81
V0840	RS 2 VIE 3/8"	3/8"	35	500	£10.95	€ 14.79
V0850	RS 2 VIE 1/2"	1/2"	60	500	£12.01	€ 16.21
V0860	RS 2 VIE 3/4"	3/4"	100	400	£30.66	€ 41.40
V0870	RS 2 VIE 1"	1"	180	350	£38.50	€ 51.97
V0871	RS 2 VIE 1 1/4"	1 1/4"	180	350	£38.47	€ 51.93
V0874	RS 2 VIE 1 1/2"	1 1/2"	180	350	£41.52	€ 56.04

### 2 WAY BALL VALVES WITH FIXING HOLES

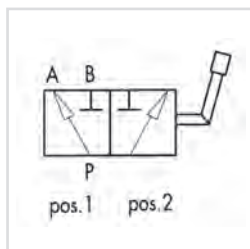


www.flowfitonline.com  
TECH. DATA SHEET  
**CV92**

CODE	TYPE	BSP PORTS	MAX FLOW L/MIN	MAX PRESSURE BAR	NETT. PRICE	
					£ STERLING	€ EUROS
V0830/FF	RS 2 VIE 1/4" FF	1/4"	25	500	£15.35	€ 20.71
V0840/FF	RS 2 VIE 3/8" FF	3/8"	35	500	£16.51	€ 22.29
V0850/FF	RS 2 VIE 1/2" FF	1/2"	60	500	£18.05	€ 24.35
V0860/FF	RS 2 VIE 3/4" FF	3/4"	100	400	£36.63	€ 49.45
V0870/FF	RS 2 VIE 1" FF	1"	180	350	£40.14	€ 54.19
V0871/FF	RS 2 VIE 1 1/4" FF	1 1/4"	180	350	£52.32	€ 70.62
V0874/FF	RS 2 VIE 1 1/2" FF	1 1/2"	180	350	£56.85	€ 76.74

CODE	TYPE	PORTS METRIC	MAX FLOW L/MIN	MAX PRESSURE BAR	NETT. PRICE	
DIN 2353 LIGHT SERIES CONNECTION					£ STERLING	€ EUROS
RS2-6L	RS 2 VIE M12X1.5	M12X1.5	25	500	£5.69	€ 7.69
RS2-8L	RS 2 VIE M14X1.5	M14X1.5	25	500	£5.69	€ 7.69
RS2-10L	RS 2 VIE M16X1.5	M16X1.5	25	500	£5.69	€ 7.69
RS2-12L	RS 2 VIE M18X1.5	M18X1.5	35	500	£13.38	€ 18.07
RS2-15L	RS 2 VIE M22X1.5	M22X1.5	35	500	£14.97	€ 20.21
RS2-18L	RS 2 VIE M26X1.5	M26X1.5	60	500	£14.97	€ 20.21
RS2-22L	RS 2 VIE M30X2	M30X2	60	500	£30.66	€ 41.40
RS2-28L	RS 2 VIE M36X2	M36X2	100	350	£40.58	€ 54.78
RS2-35L	RS 2 VIE M45X2	M45X2	180	350	£90.09	€ 121.63
RS2-42L	RS 2 VIE M52X2	M52X2	180	350	£90.09	€ 121.63

## 3 WAY BALL VALVES



### USE AND OPERATION

These valves are used to divert the inlet flow towards 2 alternate ports ("L" configuration)

**Body:** Zinc-plated steel **Internal parts:** Hardened and ground steel, **Seals:** Buna N standard and POM seals, **Tightness:** No leakage.

**Applications:** Connect P to the pressure flow, A and B to the circuit ports where the flow has to be diverted to. With the lever at 90 deg. Flow is connected to port A (position 1), with lever in line flow is connected to port B (position 2).

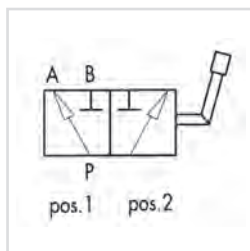
### On Request:

Fixing holes (CODE / FF).

www.flowfitonline.com  
TECH. DATA SHEET  
**CV93**

CODE	TYPE	BSP PORTS	MAX FLOW L/MIN	MAX PRESSURE BAR	NETT. PRICE	
DIN/ISO 228 BSP FEMALE CONNECTION					£ STERLING	€ EUROS
V0832	RS 3 VIE 1/4"	1/4"	25	500	£23.30	€ 31.45
V0842	RS 3 VIE 3/8"	3/8"	35	500	£23.30	€ 31.45
V0852	RS 3 VIE 1/2"	1/2"	60	500	£26.56	€ 35.86
V0862	RS 3 VIE 3/4"	3/4"	100	400	£43.21	€ 58.33
V0872	RS 3 VIE 1"	1"	180	350	£52.69	€ 71.14
V0873	RS 3 VIE 1 1/4"	1 1/4"	180	350	£68.57	€ 92.58
V0875	RS 3 VIE 1 1/2"	1 1/2"	180	350	£84.84	€ 114.54

## 3 WAY BALL VALVES WITH FIXING HOLES



www.flowfitonline.com  
TECH. DATA SHEET  
**CV93**

CODE	TYPE	BSP PORTS	MAX FLOW L/MIN	MAX PRESSURE BAR	NETT. PRICE	
					£ STERLING	€ EUROS
V0832/FF	RS 3 VIE 1/4" FF	1/4"	25	500	£31.88	€ 43.04
V0842/FF	RS 3 VIE 3/8" FF	3/8"	35	500	£32.58	€ 43.98
V0852/FF	RS 3 VIE 1/2" FF	1/2"	60	500	£33.71	€ 45.50
V0862/FF	RS 3 VIE 3/4" FF	3/4"	100	400	£54.06	€ 73.00
V0872/FF	RS 3 VIE 1" FF	1"	180	350	£56.18	€ 75.84
V0873/FF	RS 3 VIE 1 1/4" FF	1 1/4"	180	350	£71.67	€ 96.76
V0875/FF	RS 3 VIE 1 1/2" FF	1 1/2"	180	350	£87.64	€ 118.32

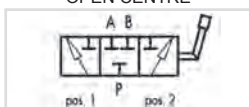
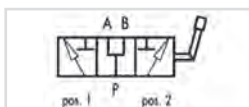
CODE	TYPE	METRIC PORTS	MAX FLOW L/MIN	MAX PRESSURE BAR	NETT. PRICE	
DIN 2353 LIGHT SERIES CONNECTION					£ STERLING	€ EUROS
RS3-6L	RS 3 VIE M12X1.5	M12X1.5	25	500	£34.48	€ 46.56
RS3-8L	RS 3 VIE M14X1.5	M14X1.5	25	500	£34.48	€ 46.56
RS3-10L	RS 3 VIE M16X1.5	M16X1.5	25	500	£34.48	€ 46.56
RS3-12L	RS 3 VIE M18X1.5	M18X1.5	35	500	£36.22	€ 48.89
RS3-15L	RS 3 VIE M22X1.5	M22X1.5	60	500	£38.80	€ 52.39
RS3-18L	RS 3 VIE M26X1.5	M26X1.5	60	500	£38.80	€ 52.39
RS3-22L	RS 3 VIE M30X2	M30X2	60	500	£64.81	€ 87.49
RS3-28L	RS 3 VIE M36X2	M36X2	100	350	£72.73	€ 98.17
RS3-35L	RS 3 VIE M45X2	M45X2	180	350	£80.08	€ 108.11
RS3-42L	RS 3 VIE M52X2	M52X2	180	350	£319.73	€ 431.63

## DIVERTER VALVES



www.flowfitonline.com  
TECH. DATA SHEET  
**CV94**

### 3 WAY DIVERTER VALVES



#### USE AND OPERATION

3 way diverter valves are used to divert the flow towards 2 different outlets.

**Body:** Cast iron **Colour:** Black **Internal parts:** Hardened and ground steel, **External Parts:** White Zinc plated **Seals:** Buna N standard, **Tightness:** Minor leakage.

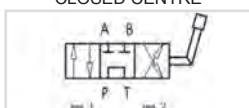
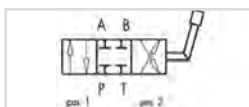
**Applications:** Connect P to the pressure flow, A and B to the circuit ports where the flow has to be diverted to. With the lever in position 1, the flow is connected towards port A; with the lever in position 2, the flow is connected towards port B. With the lever in the central position, ports P, A and B are all connected (open centre).

#### On Request:

Closed centre (CODE/CC). High pressure - up to 400 Bar (CODE/AP).

CODE	TYPE	BSP PORTS	MAX FLOW L/MIN	MAX PRESSURE BAR	NETT. PRICE	
3 WAY OPEN CENTRE					£ STERLING	€ EUROS
7000.0104	1/4" 3 WAY DIVERTER VALVE OPEN CENTRE	1/4"	60	350	£19.66	€ 26.54
7000.0100	3/8" 3 WAY DIVERTER VALVE OPEN CENTRE	3/8"	60	350	£19.66	€ 26.54
7000.0101	1/2" 3 WAY DIVERTER VALVE OPEN CENTRE	1/2"	90	350	£22.63	€ 30.54
7000.0102	3/4" 3 WAY DIVERTER VALVE OPEN CENTRE	3/4"	120	350	£28.58	€ 38.58
7000.0103	1" 3 WAY DIVERTER VALVE OPEN CENTRE	1"	200	300	£40.49	€ 54.65
3 WAY CLOSED CENTRE					£ STERLING	€ EUROS
7000.0111	1/4" 3 WAY DIVERTER VALVE CLOSED CENTRE	1/4"	60	350	£19.66	€ 26.54
7000.0107	3/8" 3 WAY DIVERTER VALVE CLOSED CENTRE	3/8"	60	350	£19.66	€ 26.54
7000.0108	1/2" 3 WAY DIVERTER VALVE CLOSED CENTRE	1/2"	90	350	£22.63	€ 30.54
7000.0109	3/4" 3 WAY DIVERTER VALVE CLOSED CENTRE	3/4"	120	350	£28.58	€ 38.58
7000.0110	1" 3 WAY DIVERTER VALVE CLOSED CENTRE	1"	200	300	£40.49	€ 54.65

### 4 WAY DIVERTER VALVES



#### USE AND OPERATION

This valve is used to reverse oil flow from 2 ways in towards two ways out. It could be used to control a double acting actuator or to reverse the rotation of an hydraulic motor.

**Body:** Cast iron **Colour:** Black **Internal parts:** Hardened and ground steel, **External Parts:** White Zinc plated **Seals:** Buna N standard, **Tightness:** Low leakage.

**Applications:** Connect P to the pressure flow, T to the tank and ports A and B to the actuators or motor. With lever in position 1, P is connected to A and at the same time B drains into the tank T; with lever in position 2, P is connected to B and at the same time A drains into tank T. With lever in the central position all ports are closed (closed centre).

#### On Request:

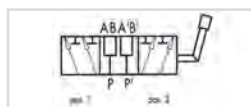
Open centre (CODE/CC). High pressure - up to 400 Bar (CODE/AP).

CODE	TYPE	BSP PORTS	MAX FLOW L/MIN	MAX PRESSURE BAR	NETT. PRICE	
4 WAY OPEN CENTRE					£ STERLING	€ EUROS
7001.0104	1/4" 4 WAY DIVERTER VALVE OPEN CENTRE	1/4"	60	350	£28.58	€ 38.58
7001.0100	3/8" 4 WAY DIVERTER VALVE OPEN CENTRE	3/8"	60	350	£28.58	€ 38.58
7001.0101	1/2" 4 WAY DIVERTER VALVE OPEN CENTRE	1/2"	90	350	£30.96	€ 41.80
7001.0102	3/4" 4 WAY DIVERTER VALVE OPEN CENTRE	3/4"	120	350	£42.87	€ 57.87
7001.0103	1" 4 WAY DIVERTER VALVE OPEN CENTRE	1"	200	300	£45.25	€ 61.08
4 WAY CLOSED CENTRE					£ STERLING	€ EUROS
7001.0111	1/4" 4 WAY DIVERTER VALVE CLOSED CENTRE	1/4"	60	350	£28.58	€ 38.58
7001.0107	3/8" 4 WAY DIVERTER VALVE CLOSED CENTRE	3/8"	60	350	£28.58	€ 38.58
7001.0108	1/2" 4 WAY DIVERTER VALVE CLOSED CENTRE	1/2"	90	350	£30.96	€ 41.80
7001.0109	3/4" 4 WAY DIVERTER VALVE CLOSED CENTRE	3/4"	120	350	£42.87	€ 57.87
7001.0110	1" 4 WAY DIVERTER VALVE CLOSED CENTRE	1"	200	300	£45.25	€ 61.08

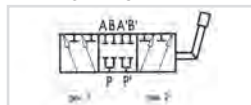


## 6 WAY DIVERTER VALVES

www.flowfitonline.com  
TECH. DATA SHEET  
**CV96**



OPEN CENTRE



CLOSED CENTRE

### USE AND OPERATION

This valve is made up of two 3-way diverters coupled: each of the 2 parts are used to divert the inlet flow towards two ports. The single lever controls both the parts at the same time. It's ideal to control 2 actuators.

**Body:** Cast iron **Colour:** Black **Internal parts:** Hardened and ground steel, **External Parts:** White Zinc plated **Seals:** Buna N standard, **Tightness:** Minor leakage.

**Applications:** Connect P and P' to the 2 pressure flows, Ports A and B to the first actuator and ports A' and B' to the second actuator. With lever in position 1, P is connected to A and P' to A'; with lever in position 2, P is connected to B and P' to B'. With lever in central position all ports are connected to each other (open centre)

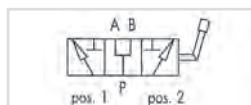
### On Request:

Closed centre (CODE/CC). High pressure - up to 400 Bar (CODE/AP).

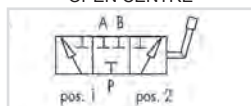
CODE	TYPE	BSP PORTS	MAX FLOW L/MIN	MAX PRESSURE BAR	NETT. PRICE	
6 WAY OPEN CENTRE					£ STERLING	€ EUROS
7003.0104	1/4" 6 WAY DIVERTER VALVE OPEN CENTRE	1/4"	60+60	350	£40.49	€ 54.65
7003.0100	3/8" 6 WAY DIVERTER VALVE OPEN CENTRE	3/8"	60+60	350	£40.49	€ 54.65
7003.0101	1/2" 6 WAY DIVERTER VALVE OPEN CENTRE	1/2"	90+90	350	£47.63	€ 64.30
7003.0102	3/4" 6 WAY DIVERTER VALVE OPEN CENTRE	3/4"	120+120	350	£58.34	€ 78.76
7003.0103	1" 6 WAY DIVERTER VALVE OPEN CENTRE	1"	200+200	300	£82.16	€ 110.92
6 WAY CLOSED CENTRE					£ STERLING	€ EUROS
7003.0111	1/4" 6 WAY DIVERTER VALVE CLOSED CENTRE	1/4"	60+60	350	£40.49	€ 54.65
7003.0107	3/8" 6 WAY DIVERTER VALVE CLOSED CENTRE	3/8"	60+60	350	£40.49	€ 54.65
7003.0108	1/2" 6 WAY DIVERTER VALVE CLOSED CENTRE	1/2"	90+90	350	£47.63	€ 64.30
7003.0109	3/4" 6 WAY DIVERTER VALVE CLOSED CENTRE	3/4"	120+120	350	£58.34	€ 78.76
7003.0110	1" 6 WAY DIVERTER VALVE CLOSED CENTRE	1"	200+200	300	£82.16	€ 110.92

## HIGH PRESSURE 3-WAY DIVERTER VALVES, STEEL BODY

www.flowfitonline.com  
TECH. DATA SHEET  
**CV97**



OPEN CENTRE



CLOSED CENTRE

### USE AND OPERATION

Diverter flow is used to divert the flow towards 2 different outlets.

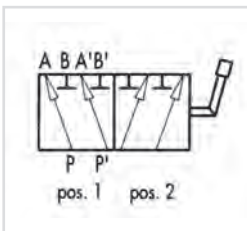
**Body:** Steel **Internal parts:** Hardened and ground steel, **Seals:** Buna N standard, **Tightness:** Minor leakage.

**Applications:** Connect P to the pressure flow, A and B to the ports of the hydraulic circuit where flow has to be diverted. With lever in position 1 the flow is connected towards port A; with lever in position 2, the flow is connected towards port B. With lever in central position ports P, A and B are all connected (open centre).

CODE	TYPE	BSP PORTS	MAX FLOW L/MIN	MAX PRESSURE BAR	WEIGHT KG	NETT. PRICE	
						£ STERLING	€ EUROS
VO879/AP	DF 3 VIE 1/4" AP ACC.	1/4"	20	500	0.65	£34.00	€ 45.90
VO881/AP	DF 3 VIE 3/8" AP ACC.	3/8"	35	500	0.72	£34.00	€ 45.90
VO891/AP	DF 3 VIE 1/2" AP ACC.	1/2"	60	500	0.92	£40.95	€ 55.29
VO901/AP	DF 3 VIE 3/4" AP ACC.	3/4"	100	500	1.57	£44.81	€ 60.49
VO911/AP	DF 3 VIE 1" AP ACC.	1"	180	500	2.17	£68.76	€ 92.84

## 6 WAY DIVERTER VALVES, STEEL BODY

www.flowfitonline.com  
TECH. DATA SHEET  
**CV98**



### USE AND OPERATION

This valve is used to divert the flow from 2 ways in towards 4 ports (two at a time alternatively). It's ideal to control 2 actuators.

**Body:** Zinc-plated steel **Internal parts:** Hardened and ground steel, **Seals:** Buna N standard, **Tightness:** Minor leakage.

**Applications:** Connect P and P' to the 2 pressure flows, ports A and B to the first actuator and ports A' and B' to the second actuator. With lever in position 1, P is connected to A and P' to A'; with lever in position 2, P is connected to B and P' to B'. Use with lever in central position is NOT recommended.

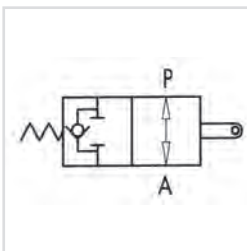
CODE	TYPE	PORTS BSP	MAX FLOW L/MIN	MAX PRESSURE BAR	NETT. PRICE	
					£ STERLING	€ EUROS
V0930	DF 6 VIE 3/8" ACCIAIO	3/8"	40	300	£64.95	€ 87.69
V0932	DF 6 VIE 1/2" ACCIAIO	1/2"	60	300	£76.46	€ 103.23

## END STROKE VALVES



### END STROKE VALVES, NORMALLY OPEN

www.flowfitonline.com  
TECH. DATA SHEET  
**CV99**



### USE AND OPERATION

This valve is used to stop oil inlet in a hydraulic circuit or to stop actuator's stroke (normally opened valve). The valve closing, obtained by pulling or pushing the slider, allows an immediate and total stop of the oil flow.

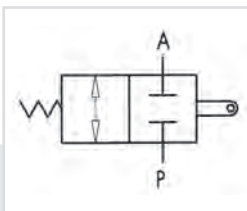
**Body:** Cast iron **Internal parts:** Hardened and ground steel, **Seals:** Buna N standard and POM seals, **Tightness:** Minor leakage.

**Applications:** Connect P to the distributor and A to the circuit or to the actuator. When the slider is operating, flow is blocked from P towards A, whilst the check valve enables free flow oil flow in the reverse direction (from A towards P).

CODE	TYPE	PORT SIZE BSP	MAX FLOW L/MIN	MAX PRESSURE BAR	NETT. PRICE	
					£ STERLING	€ EUROS
V0824	V-FCR 1T 60	3/8"	60	350	£58.63	€ 79.14
V0826	V-FCR 1T 80	1/2"	80	350	£60.59	€ 81.80
V0825	V-FCR 1T 120	3/4"	120	350	£126.90	€ 171.31

### END STROKE VALVES, NORMALLY CLOSED

www.flowfitonline.com  
TECH. DATA SHEET  
**CV100**



### USE AND OPERATION

This valve is used to enable oil inlet in a hydraulic circuit (normally closed valve). The valve opens by pulling or pushing the slider.

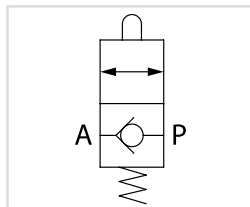
**Body:** Cast iron **Internal parts:** Hardened and ground steel, **Seals:** Buna N standard and POM seals, **Tightness:** Minor

**Applications:** Connect independently A and P to the distributor and to the circuit. When slider is operating, flow is free in both directions, vice versa it is blocked.

CODE	TYPE	PORT SIZE BSP	MAX FLOW L/MIN	MAX PRESSURE BAR	NETT. PRICE	
					£ STERLING	€ EUROS
V0820	V-FCR 2T 60	3/8"	60	350	£55.65	€ 75.14
V0822	V-FCR 2T 80	1/2"	80	350	£56.86	€ 76.76
V0823	V-FCR 2T 120	3/4"	120	350	£119.72	€ 161.62

## MECHANICAL DRIVE END STROKE VALVE, NORMALLY CLOSED

www.flowfitonline.com  
TECH. DATA SHEET  
**CV101**



### USE AND OPERATION:

This valve allows oil passage in a hydraulic circuit (normally closed valve). Once the slider is set into action, oil flow is free from P to A. It can be used:

- a. to set the sequence of 2 actuators;
- b. as an end strokes valve, where flow is directly connected to the tank.

Body: zinc-plated steel. Internal parts: hardened and ground steel.

Seals: BUNA N standard. Ball type: any leakage

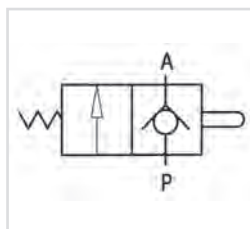
Applications: Connect A directly to the tank and P as for necessity.

Mounting scheme can vary according to the use.

CODE	TYPE	BSP PORTS	MAX FLOW L/MIN	MAX PRESSURE BAR	NETT. PRICE	
					£ STERLING	€ EUROS
V0815	V-FCC 1/2" NC	1/2"	80	350	£121.93	€ 164.60

## PUSHBUTTON END STROKE VALVES, NORMALLY CLOSED

www.flowfitonline.com  
TECH. DATA SHEET  
**CV102**



### USE AND OPERATION

This valve allows oil passage in a hydraulic circuit (normally closed valve). Once the slider is set into action, oil flow is free from P to A. It can be used: (a) to set the sequence of 2 actuators (b) as end

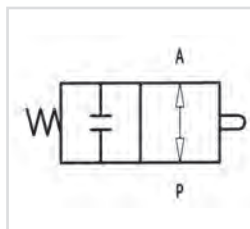
**Body:** Zinc-plated steel **Internal parts:** Hardened and ground steel, **Seals:** Buna N standard, **Tightness:** No leakage.

**Applications:** Connect A directly to the tank line P as for necessity. Mounting scheme can vary according to the use.

CODE	TYPE	BSP PORTS	MAX FLOW L/MIN	MAX PRESSURE BAR	NETT. PRICE	
					£ STERLING	€ EUROS
V0827	V - 101 3/8" NC	3/8"	40	350	£53.77	€ 72.60
V0828	V - 101 1/2" NC	1/2"	60	350	£59.99	€ 80.99
V0829	V - 101 3/4" NC	3/4"	100	350	£80.59	€ 108.80

## PUSHBUTTON END STROKE VALVES, NORMALLY OPENED

www.flowfitonline.com  
TECH. DATA SHEET  
**CV103**



### USE AND OPERATION

This valve is used to block oil passage in a hydraulic circuit (normally opened valve). The valve is closed by pushing mechanically the slider.

**Body:** Zinc-plated steel **Internal parts:** Hardened and ground steel, **Seals:** Buna N standard, **Tightness:** No leakage.

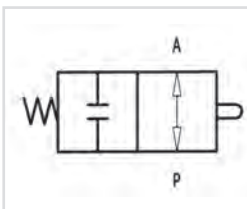
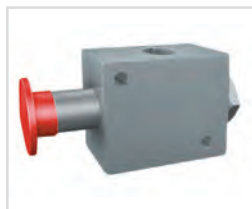
**Applications:** Connect independently A or P to the distributor and to the circuit. When button is operating, flow is blocked in both directions, vice versa it is free.

CODE	TYPE	BSP PORTS	MAX FLOW L/MIN	MAX PRESSURE BAR	NETT. PRICE	
					£ STERLING	€ EUROS
V0817	V - 101 3/8" NA	3/8"	35	350	£62.50	€ 84.37
V0818	V - 101 1/2" NA	1/2"	50	350	£64.55	€ 87.13

FOR SALES  
& ADVICE  
CALL US  
**01584  
876033**

## MANUAL EMERGENCY VALVE

www.flowfitonline.com  
TECH. DATA SHEET  
**CV104**



### USE AND OPERATION:

This pushbutton valve allows oil passage in a hydraulic circuit by means of a licker. Once the manual button is set into action oil flows from P towards T or the other way round.

**Body:** zinc-plated steel. **Internal parts:** hardened and ground steel. **Seals:** BUNA N standard. **Tightness:** minor leakage

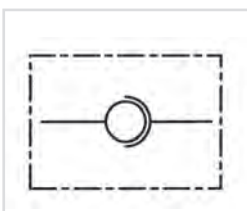
**Applications:** Connect the ports P and T to either distributor and circuit. When the button is pressed the flow is free, otherwise the flow is blocked in both directions.

CODE	TYPE	BSP PORTS	MAX FLOW L/MIN	MAX PRESSURE BAR	NETT. PRICE	
					£ STERLING	€ EUROS
V1320	VEM 1/2"	1/2"	50	350	£77.39	€ 104.48

## ROTATING COUPLINGS

### IN LINE ROTATING COUPLING

www.flowfitonline.com  
TECH. DATA SHEET  
**CV105**



### USE AND OPERATION

These valves are mounted between the end of a flexible hose and a fixed component to compensate hose's rotations and torsions and prevent its damaging. They are not suitable for fast and continuous rotations. They are used in every production field where systems have flexible moving hoses. In line mounting.

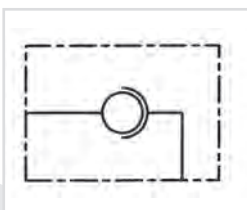
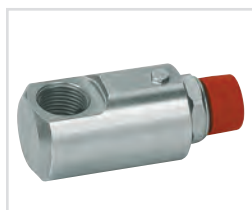
**Body:** Zinc-plated steel. **Tightness:** Low friction seals.

**Applications:** Connect port P to the uses.

CODE	TYPE	BSP PORTS	MAX FLOW L/MIN	MAX PRESSURE (BAR) WHEN ROTATING	MAX PRESSURE BAR	MAX ROTATION SPEED	NETT. PRICE	
							£ STERLING	€ EUROS
G1050	GGL 1/4"	1/4"	25	200	400	212	£8.93	€ 12.06
G1060	GGL 3/8"	3/8"	35	200	400	173	£9.49	€ 12.81
G1070	GGL 1/2"	1/2"	60	150	300	160	£11.10	€ 14.99
G1080	GGL 3/4"	3/4"	100	150	300	120	£16.50	€ 22.27
G1090	GGL 1"	1"	180	100	300	100	£22.65	€ 30.57
G1091	GGL 1 1/4"	1 1/4"	200	100	300	86	£40.82	€ 55.11
G1092	GGL 1 1/2"	1 1/2"	250	80	300	73	£61.27	€ 82.72
G1093	GGL 2"	2"	300	50	250	50	£85.06	€ 114.84

## 90 DEGREE ROTATING COUPLING

www.flowfitonline.com  
TECH. DATA SHEET  
**CV106**



### USE AND OPERATION

These valves are mounted between the end of a flexible hose and a fixed component to compensate hose's rotations and torsions and prevent its damaging. They are not suitable for fast and continuous rotations. They are used in every production field where systems have flexible moving hoses. 90 deg. mounting.

**Body:** Zinc-plated steel. **Tightness:** Low friction seals.

**Applications:** Connect port P to the uses.

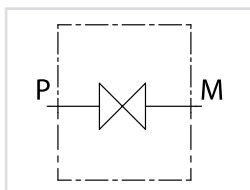
CODE	TYPE	BSP PORTS	MAX FLOW L/MIN	MAX PRESSURE (BAR) WHEN ROTATING	MAX PRESSURE BAR	MAX ROTATION SPEED	NETT. PRICE	
							£ STERLING	€ EUROS
G0990	GG 90DEG 1/4"	1/4"	25	200	400	212	£9.55	€ 12.90
G1010	GG 90DEG 3/8"	3/8"	35	200	400	173	£10.56	€ 14.26
G1020	GG 90DEG 1/2"	1/2"	60	150	300	160	£12.48	€ 16.86
G1030	GG 90DEG 3/4"	3/4"	100	150	300	120	£19.29	€ 26.04
G1040	GG 90DEG 1"	1"	180	100	300	100	£25.05	€ 33.81
G1042	GG 90DEG 1 1/4"	1 1/4"	200	100	300	86	£64.24	€ 86.72
G1043	GG 90DEG 1 1/2"	1 1/2"	250	80	300	73	£84.14	€ 113.59
G1044	GG 90DEG 2"	2"	300	50	250	50	£116.66	€ 157.50

## GAUGE ISOLATOR VALVES



### GAUGE ISOLATOR IN LINE

www.flowfitonline.com  
TECH. DATA SHEET  
**CV107**



#### USE AND OPERATION:

These valves are used to open or close the oil flow to the gauge in an hydraulic system.

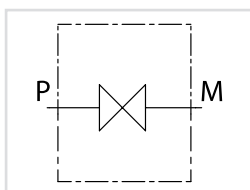
**Body:** nickel steel. **Seals:** NBR

**Applications** Screw the gauge isolator to the hydraulic system to the male port P and fix the gauge to female port M. In order to open or close the flow turn the knob.

CODE	TYPE	BSP PORTS	WORKING PRESSURE BAR	NETT. PRICE	
				£ STERLING	€ EUROS
EM001L	EML 1/4" BSP MF	1/4"	400	£10.41	€ 14.05

### GAUGE ISOLATOR 90°

www.flowfitonline.com  
TECH. DATA SHEET  
**CV108**



#### USE AND OPERATION:

These valves are used to open or close the oil flow to the gauge in an hydraulic system.

**Body:** nickel steel. **Seals:** NBR

**Applications** Screw the gauge isolator to the hydraulic system to the male port P and fix the gauge to female port M. In order to open or close the flow turn the knob.

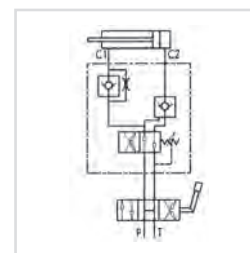
CODE	TYPE	BSP PORTS	WORKING PRESSURE BAR	NETT. PRICE	
				£ STERLING	€ EUROS
EM001N	EM90° 1/4" BSP MF	1/4"	400	£10.41	€ 14.05

## PLOUGH OVERTURNING VALVES



### SINGLE ACTING PLOUGH OVERTURNING VALVES

www.flowfitonline.com  
TECH. DATA SHEET  
**CV109**



#### USE AND OPERATION

This valve has been realised for use on cylinders for reversible plough to obtain the automatic backflow and therefore the reversal of the motion of the hydraulic cylinder that makes the plough rotate. It is provided with a single pilot check valve which guarantees safety just on the block side, whilst the stem side it must be leaned on the plough mechanical locks. Assembly on balanced and light plough with internal diameters 40/50mm and 60/80mm is recommended.

**Body:** Zinc-plated steel **Internal parts:** Hardened and ground steel,

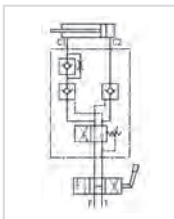
**Seals:** Buna N standard, **Tightness:** No leakage. These valves are supplied with exchange pressure at 140 Bar: according to your requirements, pressure setting can be modified by acting on the pressure regulator.

**Applications:** Connect C1 to the cylinder's stem, C2 to the block, P and T to the machine inlet. Due to its shape, it can be in-line assembled on a hydraulic cylinder or directly fixed on the plough by means of the threaded hole on the body.

CODE	TYPE	BSP PORTS	MAX FLOW L/MIN	MAX PRESSURE BAR	NETT. PRICE	
					£ STERLING	€ EUROS
V0278	VRA 40/50 SE	3/8"	200	400	£103.58	€ 139.83
V0280	VRA 60/80 SE	3/8"	200	400	£103.58	€ 139.83

## DOUBLE ACTING PLOUGH OVERTURNING VALVES

www.flowfitonline.com  
TECH. DATA SHEET  
**CV110**



### USE AND OPERATION

This valve has been realised for use on cylinders for reversible plough to obtain the automatic backflow and therefore the motion reversal of the hydraulic cylinder that makes the plough rotate. It is provided with a double pilot check valve which guarantees safety and enables to put and block the cylinder in any position. The motion reversal of the piston is made through a differential type relief valve exactly in the dead point of the plough, generating more power and speed. It can be assembled on heavy and unbalanced plough with the following internal diameters: 40/50, 60/80, 80.100, 100/110, 110/130 mm.

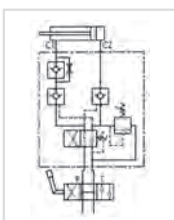
**Body:** Zinc-plated steel **Internal parts:** Hardened and ground steel, **Seals:** Buna N standard, **Tightness:** No leakage. These valves are supplied with exchange pressure at 140 Bar: according to your requirements, pressure setting can be modified by acting on the pressure regulator.

**Applications:** Connect C1 to the cylinder's stem, C2 to the block, P and T to the machine inlet. Due to its shape, it can be in-line assembled on a hydraulic cylinder or directly fixed on the plough by means of the threaded hole on the body.

CODE	TYPE	BSP PORTS	MAX FLOW L/MIN	MAX PRESSURE BAR	NETT. PRICE	
					£ STERLING	€ EUROS
V0282	VRAP 40/50 SE	3/8"	250	400	£119.11	€ 160.80
V0290	VRAP 60/80 SE	3/8"	250	400	£119.11	€ 160.80
V0300	VRAP 80/100 SE	3/8"	250	400	£119.11	€ 160.80
V0302	VRAP 100/110 SE	3/8"	250	400	£119.11	€ 160.80
V0320	VRAP 110/130 SE	3/8"	250	400	£121.40	€ 163.90

## DOUBLE ACTING PLOUGH OVERTURNING VALVES WITH RELIEF VALVE

www.flowfitonline.com  
TECH. DATA SHEET  
**CV111**



### USE AND OPERATION

This valve has been realised for use on cylinders for reversible plough to obtain the automatic backflow and therefore the motion reversal of the hydraulic cylinder that makes the plough rotate. It is provided with a double pilot check valve and with a relief valve that enables to reduce the thrust (block side) in order not to damage the mechanical locks and the plough's head. The motion reversal of the piston is made through a differential type relief valve exactly in the dead point of the plough, generating more power and speed. It's ideal for assembly on heavy and unbalanced plough with the following internal diameters: 60/80, 80.100, 100/110, 110/130 mm.

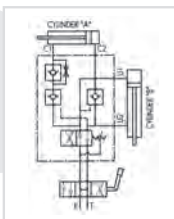
**Body:** Zinc-plated steel **Internal parts:** Hardened and ground steel, **Seals:** Buna N standard, **Tightness:** No leakage. These valves are supplied with exchange pressure at 140 Bar: according to our requirements, pressure setting can be modified by acting on the pressure regulator.

**Applications:** Connect C1 to the cylinder's stem, C2 to the block, P and T to the machine inlet. Due to its shape, it can be in-line assembled on a hydraulic cylinder or directly fixed on the plough by means of the threaded hole on the body.

CODE	TYPE	BSP PORTS	MAX FLOW L/MIN	MAX PRESSURE BAR	NETT. PRICE	
					£ STERLING	€ EUROS
V0350	VRAP 60/80 SE + VMP	3/8"	250	400	£126.90	€ 171.31
V0360	VRAP 80/100 SE + VMP	3/8"	250	400	£148.68	€ 200.72
V0376	VRAP 100/110 SE + VMP	3/8"	250	400	£148.68	€ 200.72
V0380	VRAP 110/130 SE + VMP	3/8"	250	400	£150.58	€ 203.29

## DOUBLE ACTING PLOUGH OVERTURNING VALVE BY DOWN MOULDBOARD LOAD SHIFTING

www.flowfitonline.com  
TECH. DATA SHEET  
**CV112**



### USE AND OPERATION

This valve has been realised for use on cylinders for reversible plough to obtain the automatic backflow and therefore the motion reversal of the hydraulic cylinder that makes the plough rotate. It has been designed to set in action 2 cylinders with disadvantageous rotation load (see diagram).

Operating Instructions: First cylinder B starts lining up the load. Before the manoeuvre ends, cylinder A starts overturning. **Body:** Zinc-plated steel **Internal parts:** Hardened and ground steel, **Seals:** Buna N standard, **Tightness:** No leakage. These valves are supplied with exchange pressure at 140 Bar: according to your requirements, pressure setting can be modified by acting on the pressure regulator.

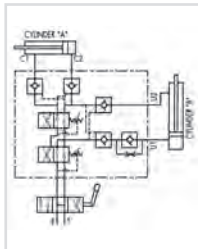
**Applications:** Connect C1 to the stem, C2 to the cylinder's block A, U1 to the block and U2 to B port of the cylinder; P and T to the machine inlet. Due to its shape, it can be in-line assembled on a hydraulic cylinder or directly fixed on the plough by means of the threaded hole on the body.

CODE	TYPE	MAX FLOW L/MIN	MAX PRESSURE BAR	NETT. PRICE	
				£ STERLING	€ EUROS
V0330	VRAP 80/100 SS	250	400	£126.90	€ 171.31



## DOUBLE ACTING PLOUGH OVERTURNING VALVE BY UP MOULDBOARD LOAD SHIFTING

www.flowfitonline.com  
TECH. DATA SHEET  
**CV113**



### USE AND OPERATION

This valve has been realised for use on cylinders for reversible plough to obtain the automatic backflow and therefore the motion reversal of the hydraulic cylinder that makes the plough rotate. It has been designed to set in action 2 cylinders with disadvantageous rotation load (see diagram).

Operating Instructions: Sequence working: first cylinder B starts lining up the load; once it has got to the end of its stroke, cylinder A starts overturning. When this gets to the dead point, A and B start working at the same time, B with a delayed speed in relation to A.

**Body:** Zinc-plated steel **Internal parts:** Hardened and ground steel, **Seals:** Buna N standard, **Tightness:** No leakage.

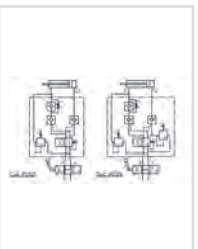
These valves are supplied with exchange pressure at 140 Bar: according to your requirements, pressure setting can be modified by acting on the pressure regulator.

**Applications:** Connect C1 to the stem, C2 to the cylinder's block A, U1 to the block and U2 to B port of the cylinder; P and T to the machine inlet. Due to its shape, it can be in-line assembled on a hydraulic cylinder or directly fixed on the plough by means of the threaded hole on the body.

CODE	TYPE	MAX FLOW L/MIN	MAX PRESSURE BAR	NETT. PRICE	
				£ STERLING	€ EUROS
V0340	VRAP 80/100 SV TN	230	400	£336.01	€ 453.61

## DOUBLE ACTING PLOUGH OUTSIDE DRILLS OVERTURNING VALVES FOR CYLINDER WITH MEMORYAND WITHOUT MEMORY

www.flowfitonline.com  
TECH. DATA SHEET  
**CV114**



### USE AND OPERATION

Valves for actuators with memory (V0325): Designed for use on cylinders with memory for outside drills reversible ploughs, it's provided with a duel cross relief valve which provides protection against tear's shocks when the plough exceeds the dead point.

Valves for actuators without memory: Designed for use on cylinders without memory for outside drills reversible ploughs, it is provided with a duel cross relief valve: this enables to reduce the thrust pressure (block side) in order not to damage the mechanical locks on the plough's head.

Both systems are provided with a fixed compensated flow control valve which allows to keep a constant speed, whether the plough works inside the drills or outside.

**Body:** Zinc-plated steel **Internal parts:** Hardened and ground steel, **Seals:** Buna N standard, **Tightness:** No leakage.

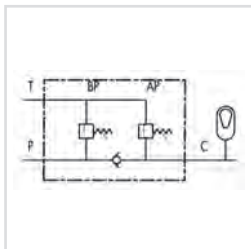
These valves are supplied with exchange pressure at 140 Bar: according to your requirements, pressure setting can be modified by acting on the pressure regulator.

**Applications:** Connect C1 and the duel cross relief valve to the cylinder from the rod side through the double banjo bolt (supplied with the valve) and double banjos, connect C2 to the cylinder from the block's side, P and T to the machine inlet.

CODE	TYPE	MAX FLOW L/MIN	MAX PRESSURE BAR	NETT. PRICE	
				£ STERLING	€ EUROS
V0325	VRAP 110/130 FSCM	250	400	£175.23	€ 236.55
V0326	VRAP 110/130 FSSM	250	400	£191.81	€ 258.94

## 1 WAY SPECIAL BLOCK FOR NO-STOP PLOUGH AND SUB-SOILERS TILLERS

www.flowfitonline.com  
TECH. DATA SHEET  
**CV115**



### USE AND OPERATION

This valve is made up of 2 relief valves and 1 check valve. It is used to supply pressure to tanked systems on non-stop plough and sub-soilers tillers in order to provide protection against shocks.

**Body:** Zinc-plated steel **Internal parts:** Hardened and ground steel, **Seals:** Buna N standard, **Tightness:** No leakage.

**Applications:** Connect P to the machine inlet, T to the draining or to the tank for eventual reutilization and J/C to the system.

\* BP adjusts the charge pressure of system and is set at 80 Bar.

\* AP adjusts the eventual security drainage opening and is set at 250 Bar.

CODE	TYPE	BSP PORTS	MAX PRESSURE BAR	NETT. PRICE	
				£ STERLING	€ EUROS
V0295	MASSELLO 1 VIA 3/8"	3/8"	350	£120.72	€ 162.98
V0296	MASSELLO 1 VIA 1/2"	1/2"	350	£129.75	€ 175.17