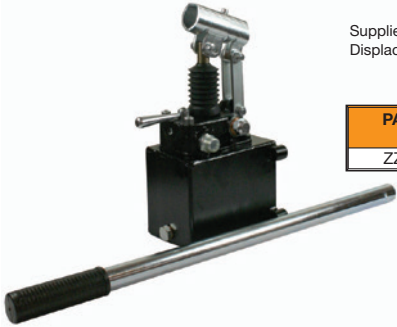


25cm³ DOUBLE ACTING HANDPUMP, 1L TANK & 600mm LEVER



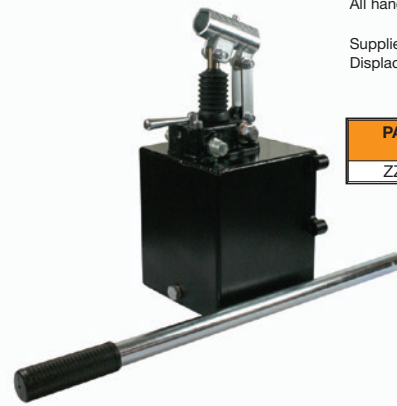
All hand pumps are fully interchangeable with other leading Italian manufacturers.

Supplied with rubber protection for the piston, pressure relief valve and 4/3 flow divider closed centre. Displacements, tank size and pressures as shown in the table below.

PART NO.	DISPLACEMENT CM ³	TANK SIZE LITRES	MAX WORKING PRESSURE BAR	MAX PRESSURE BAR	
ZZ000972	25	1	280	350	

FURTHER INFORMATION AND TECHNICAL HANDPUMP PDF IS AVAILABLE TO DOWNLOAD FROM OUR WEBSITE AT www.flowfitonline.com

25cm³ DOUBLE ACTING HANDPUMP, 2L TANK & 600mm LEVER



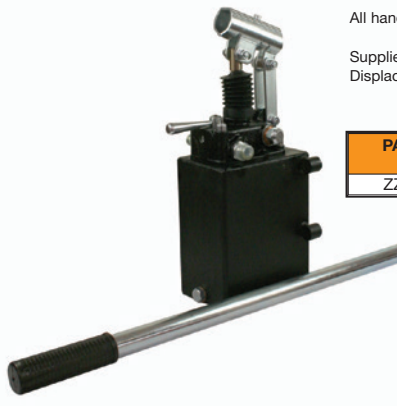
All hand pumps are fully interchangeable with other leading Italian manufacturers.

Supplied with rubber protection for the piston, pressure relief valve and 4/3 flow divider closed centre. Displacements, tank size and pressures as shown in the table below.

PART NO.	DISPLACEMENT CM ³	TANK SIZE LITRES	MAX WORKING PRESSURE BAR	MAX PRESSURE BAR	
ZZ000973	25	2	280	350	

FURTHER INFORMATION AND TECHNICAL HANDPUMP PDF IS AVAILABLE TO DOWNLOAD FROM OUR WEBSITE AT www.flowfitonline.com

25cm³ DOUBLE ACTING HANDPUMP, 3L TANK & 600mm LEVER



All hand pumps are fully interchangeable with other leading Italian manufacturers.

Supplied with rubber protection for the piston, pressure relief valve and 4/3 flow divider closed centre. Displacements, tank size and pressures as shown in the table below.

PART NO.	DISPLACEMENT CM ³	TANK SIZE LITRES	MAX WORKING PRESSURE BAR	MAX PRESSURE BAR	
ZZ000974	25	3	280	350	

FURTHER INFORMATION AND TECHNICAL HANDPUMP PDF IS AVAILABLE TO DOWNLOAD FROM OUR WEBSITE AT www.flowfitonline.com

25cm³ DOUBLE ACTING HANDPUMP, 5L TANK & 600mm LEVER



All hand pumps are fully interchangeable with other leading Italian manufacturers.

Supplied with rubber protection for the piston, pressure relief valve and 4/3 flow divider closed centre. Displacements, tank size and pressures as shown in the table below.

PART NO.	DISPLACEMENT CM ³	TANK SIZE LITRES	MAX WORKING PRESSURE BAR	MAX PRESSURE BAR	
ZZ000975	25	5	280	350	

FURTHER INFORMATION AND TECHNICAL HANDPUMP PDF IS AVAILABLE TO DOWNLOAD FROM OUR WEBSITE AT www.flowfitonline.com

25cm³ DOUBLE ACTING HANDPUMP, 7L TANK & 600mm LEVER



All hand pumps are fully interchangeable with other leading Italian manufacturers.

Supplied with rubber protection for the piston, pressure relief valve and 4/3 flow divider closed centre. Displacements, tank size and pressures as shown in the table below.

PART NO.	DISPLACEMENT CM ³	TANK SIZE LITRES	MAX WORKING PRESSURE BAR	MAX PRESSURE BAR	
ZZ000976	25	7	280	350	

FURTHER INFORMATION AND TECHNICAL HANDPUMP PDF IS AVAILABLE TO DOWNLOAD FROM OUR WEBSITE AT www.flowfitonline.com

25cm³ DOUBLE ACTING HANDPUMP, 10L TANK & 600mm LEVER



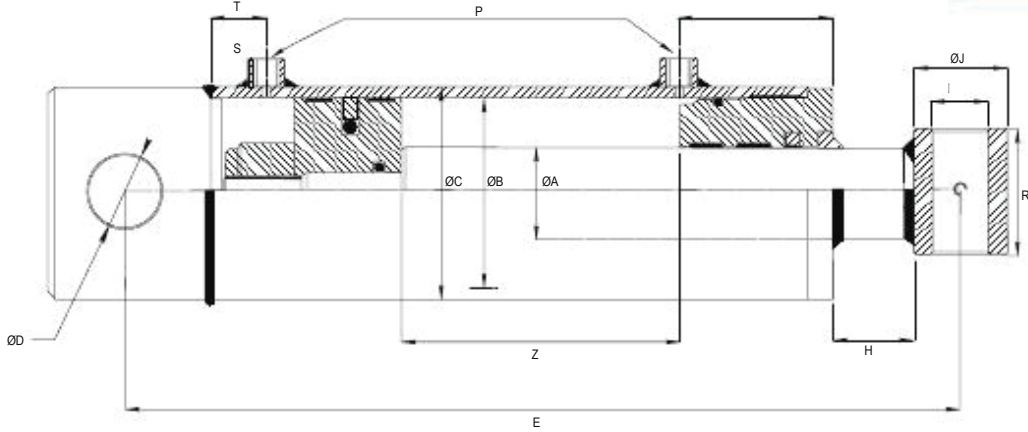
All hand pumps are fully interchangeable with other leading Italian manufacturers.

Supplied with rubber protection for the piston, pressure relief valve and 4/3 flow divider closed centre. Displacements, tank size and pressures as shown in the table below.

PART NO.	DISPLACEMENT CM ³	TANK SIZE LITRES	MAX WORKING PRESSURE BAR	MAX PRESSURE BAR	
ZZ000977	25	10	280	350	

FURTHER INFORMATION AND TECHNICAL HANDPUMP PDF IS AVAILABLE TO DOWNLOAD FROM OUR WEBSITE AT www.flowfitonline.com

SERIES 200 - DOUBLE ACTING HYDRAULIC CYLINDER

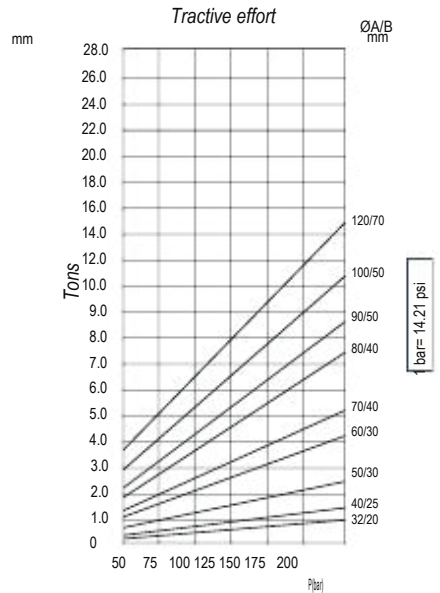
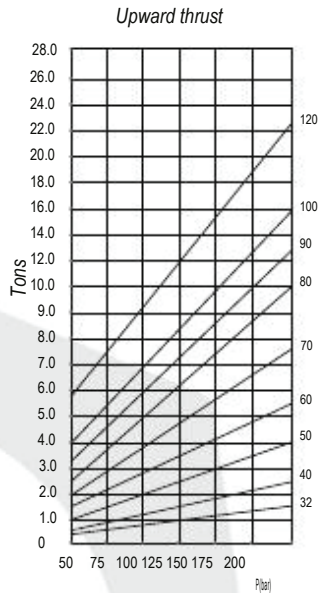
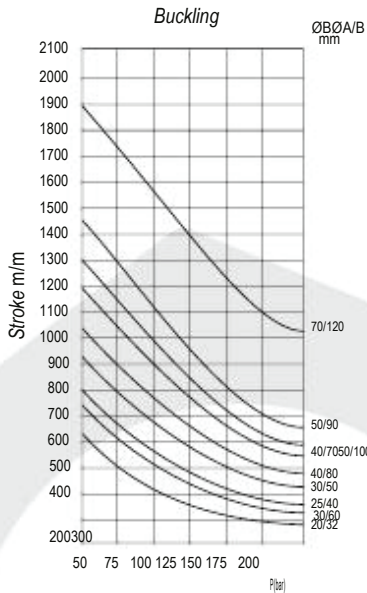


Working pressure: 180 bars.
 Speed: 0.5 m/s.
 Working temperature: -25°C - +80°C.
 Oil: Mineral oil.
 Rod: C45 f7 25 microns.
 Tube: St52.3 Din2393 Iso H9

Volume = $\pi r^2 \times \hat{h}$ (height)
 Example = Cylinder 40-70/80-400 (mm)
 $3.5 \times 3.14 \times 0.04$ (m.)
 Total 1.5386 litres

Push Force = $\pi r^2 \times$ pressure (bar)
 Example = Cylinder 40-70/80
 $3.5 \times 3.14 \times 150$ (bar)
 Total 5.769.75 Kgs

Push Force = $\pi r^2 \times$ pressure (bar)
 Example = Cylinder 40-70/80
 Calculate Rod Area: $3.14 \times 2.0^2 = 12.56$
 Calculate Tube Area: $3.14 \times 3.5^2 = 38.465$
 Subtract Areas: $38.465 - 12.56 = 25.905$
 Strength: 25.905×150 (bar) = 3885.79



ORDER CODE	ROD A	Z STROKE	E CLOSED CENTRE	B BORE	C OD	D PIN HOLE	H	T	J	R	S	P	VOL	WEIGHT
200/005	20	50	205	32	40	16.25	46	10	30	35	33	1/4 BSP	0.04	1.7
200/010		100	255									1/4 BSP	0.10	2.00
200/015		150	305									1/4 BSP	0.12	2.30
200/020		200	355									1/4 BSP	0.17	2.60
200/025		250	405									1/4 BSP	0.20	2.90
200/030		300	455									1/4 BSP	0.25	3.20
200/035		350	505									1/4 BSP	0.28	3.30
200/040		400	555									1/4 BSP	0.32	3.40
200/050		500	655									1/4 BSP	0.40	3.50
200/060		600	755									1/4 BSP	0.48	3.80
200/070		700	855									1/4 BSP	0.56	4.10
200/080		800	955									1/4 BSP	0.64	4.40
200/090		900	1055									1/4 BSP	0.72	4.70
200/100		1000	1155									1/4 BSP	0.80	5.00
200/110		1100	1255									1/4 BSP	0.85	5.30
200/120	1200	1355	1/4 BSP	0.96	5.60									
200/130	1300	1455	1/4 BSP	1.04	5.90									
200/140	1400	1555	1/4 BSP	1.12	6.20									
200/150	1500	1655	1/4 BSP	1.20	6.50									
201/010	25	100	270	40	50	20.5	30	16	35	40	42	3/8 BSP	0.12	2.80
201/015		150	320									3/8 BSP	0.18	3.50
201/020		200	370									3/8 BSP	0.25	3.80
201/025		250	420									3/8 BSP	0.31	4.20
201/030		300	470									3/8 BSP	0.40	4.80
201/035		350	520									3/8 BSP	0.44	5.20
201/040		400	570									3/8 BSP	0.55	5.80
201/050		500	670									3/8 BSP	0.60	6.80
201/060		600	770									3/8 BSP	0.75	7.80
201/070		700	870									3/8 BSP	0.90	8.80
201/080		800	970									3/8 BSP	1.00	9.60
201/090		900	1070									3/8 BSP	1.13	10.60
201/100		1000	1170									3/8 BSP	1.25	11.60
201/110		1100	1270									3/8 BSP	1.38	12.60
201/120		1200	1370									3/8 BSP	1.50	13.60
201/130	1300	1470	3/8 BSP	1.63	14.60									
201/140	1400	1570	3/8 BSP	1.76	15.60									
201/150	1500	1670	3/8 BSP	1.88	16.60									
202/010	30	100	300	50	60	25.5	47	20	35	45	43	3/8 BSP	0.19	4.40
202/015		150	350									3/8 BSP	0.29	5.00
202/020		200	400									3/8 BSP	0.39	5.00
202/025		250	450									3/8 BSP	0.49	5.60
202/030		300	500									3/8 BSP	0.59	7.06
202/035		350	550									3/8 BSP	0.68	7.40
202/040		400	600									3/8 BSP	0.79	8.28
202/045		450	650									3/8 BSP	0.88	8.70
202/050		500	700									3/8 BSP	0.98	9.50
202/060		600	800									3/8 BSP	1.18	10.72
202/070		700	900									3/8 BSP	1.37	11.94
202/080		800	1000									3/8 BSP	1.57	12.90
202/090		900	1100									3/8 BSP	1.76	14.10
202/100		1000	1200									3/8 BSP	1.96	15.30
202/110		1100	1300									3/8 BSP	2.16	16.50
202/120	1200	1400	3/8 BSP	2.35	17.70									
202/130	1300	1500	3/8 BSP	2.55	18.90									
202/140	1400	1600	3/8 BSP	2.75	20.10									
202/150	1500	1700	3/8 BSP	2.94	21.30									
203/010	30	100	300	60	70	25.5	46	20	35	45	47	3/8 BSP	0.28	6.10
203/015		150	350									3/8 BSP	0.42	6.50
203/020		200	400									3/8 BSP	0.57	7.08
203/025		250	450									3/8 BSP	0.70	7.65
203/030		300	500									3/8 BSP	0.85	8.46
203/035		350	550									3/8 BSP	0.99	9.30
203/040		400	600									3/8 BSP	1.13	9.84

ORDER CODE	ROD A	Z STROKE	E CLOSED CENTRE	B BORE	C OD	D PIN HOLE	H	T	J	R	S	P	VOL	WEIGHT
203/045		450	650									3/8 BSP	1.27	10.10
203/050		500	700									3/8 BSP	1.41	11.22
203/060		600	800									3/8 BSP	1.70	12.60
203/070		700	900									3/8 BSP	1.98	13.98
203/080		800	1000									3/8 BSP	2.26	14.8
203/085		850	1050									3/8 BSP	2.40	15.4
203/090		900	1100	60	60	60						3/8 BSP	2.54	16.1
203/100		1000	1200									3/8 BSP	2.82	17.3
203/110		1100	1300									3/8 BSP	3.10	18.6
203/120		1200	1400									3/8 BSP	3.38	19.9
203/130		1300	1500									3/8 BSP	3.66	21.2
203/140		1400	1600									3/8 BSP	3.14	22.5
203/150		1500	1700									3/8 BSP	4.22	23.8
204/010		100	310									3/8 BSP	0.38	9.59
204/020		200	410									3/8 BSP	0.77	10.39
204/025		250	460									3/8 BSP	0.96	11.30
204/030		300	510				34				51	3/8 BSP	1.15	12.22
204/035		350	560									3/8 BSP	1.34	13.00
204/040		400	610									3/8 BSP	1.54	14.05
204/050		500	710									3/8 BSP	1.92	15.88
204/055		550	760									3/8 BSP	2.11	16.71
204/060		600	810									3/8 BSP	2.31	17.71
204/070		700	910	70	80							3/8 BSP	2.69	19.54
204/080		800	1010									3/8 BSP	3.00	21.50
204/090	40	900	1110						50	55		3/8 BSP	3.40	22.75
204/100		1000	1210									3/8 BSP	3.85	23.54
204/110		1100	1310									3/8 BSP	4.23	24.54
204/120		1200	1410									3/8 BSP	4.62	25.60
204/130		1300	1510									3/8 BSP	5.00	27.54
204/140		1400	1610									3/8 BSP	5.39	29.54
204/150		1500	1710					26				3/8 BSP	5.77	32.50
204/180		1800	2010									3/8 BSP	6.93	34.60
205/010		100	310									3/8 BSP	0.53	10.00
205/020		200	410									3/8 BSP	1.01	12.10
205/025		250	460									3/8 BSP	1.25	13.00
205/030		300	510									3/8 BSP	1.51	14.10
205/035		350	560									3/8 BSP	1.76	15.00
205/040		400	610			30.5						3/8 BSP	2.01	16.10
205/050		500	710									3/8 BSP	2.51	18.10
205/060		600	810									3/8 BSP	3.02	20.10
205/070		700	910	80	90		21				56	3/8 BSP	3.52	22.10
205/080		800	1010									3/8 BSP	4.02	24.10
205/090		900	1110									3/8 BSP	4.52	26.10
205/100		1000	1210									3/8 BSP	5.03	28.10
205/110		1100	1310									3/8 BSP	5.53	30.10
205/120		1200	1410									3/8 BSP	6.03	32.10
205/130		1300	1510									3/8 BSP	6.53	34.10
205/140		1400	1610									3/8 BSP	7.04	36.10
205/150		1500	1710									3/8 BSP	7.54	38.10
206/005		50	275									3/8 BSP	0.31	10.70
206/010		100	325									3/8 BSP	0.63	12.20
206/020		200	425									3/8 BSP	1.27	15.15
206/030		300	525									3/8 BSP	1.91	18.15
206/040		400	625									3/8 BSP	2.54	21.15
206/050		500	725									3/8 BSP	3.17	24.15
206/060	50	600	825	90	100		28		60	70	60	3/8 BSP	3.80	27.15
206/070		700	925									3/8 BSP	4.43	30.15
206/080		800	1025									3/8 BSP	5.09	33.2
206/090		900	1125									3/8 BSP	5.72	36.2
206/100		1000	1225									3/8 BSP	6.36	39.20
206/110		1100	1325									3/8 BSP	7.03	42.20
206/120		1200	1425									3/8 BSP	7.63	45.20

ORDER CODE	ROD A	Z STROKE	E CLOSED CENTRE	B BORE	C OD	D PIN HOLE	H	T	J	R	S	P	VOL	WEIGHT	
206/130	50	1300	1525									3/8 BSP	8.27	48.20	
206/140		1400	1625	90	100		28				60	3/8 BSP	8.91	51.20	
206/150		1500	1725										3/8 BSP	9.54	54.20
207/010		100	325										1/2 BSP	0.78	19.50
207/020		200	425										1/2 BSP	1.57	22.70
207/030		300	525										1/2 BSP	2.36	27.60
207/040		400	625										1/2 BSP	3.14	30.80
207/050		500	725										1/2 BSP	3.94	34.00
207/060		600	825				30.5		26	60	70		1/2 BSP	4.74	37.20
207/070		700	925										1/2 BSP	5.54	40.40
207/080		800	1025	100	115			25					1/2 BSP	6.28	41.30
207/090		900	1125										1/2 BSP	7.07	43.00
207/100		1000	1225										1/2 BSP	7.86	45.90
207/110		1100	1325										1/2 BSP	8.64	48.80
207/120		1200	1425									67	1/2 BSP	9.43	51.70
207/130	1300	1525										1/2 BSP	10.21	54.60	
207/140	1400	1625										1/2 BSP	11.00	57.50	
207/150	1500	1725										1/2 BSP	11.79	60.40	
208/020	70	200	510									1/2 BSP	2.26	45.00	
208/040		400	710									1/2 BSP	4.23	55.00	
208/050		500	810									1/2 BSP	5.65	62.50	
208/060		600	910	120	140	40.5	39	30	80	80		1/2 BSP	7.07	70.00	
208/070		700	1010									1/2 BSP	8.49	77.50	
208/100		1000	1310									1/2 BSP	11.31	100.00	
208/130		1300	1610									1/2 BSP	14.71	138.00	