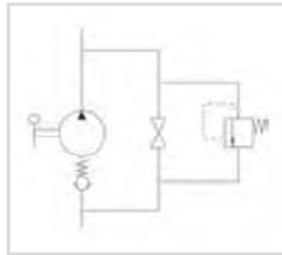


20cm³ SINGLE ACTING HANDPUMP

www.fewfitonline.com
TECH. DATA SHEET
HH04

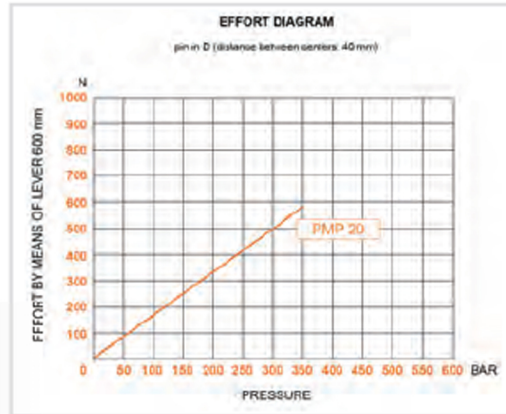


With release nut. With pressure relief valve
Double acting hand pump for single acting cylinder for fixing to wall

SPECIFICATIONS

- Piston treated with Niploy
- Lever connection: Ø 27
- Standard colour: Black
- Pressure relief valve standard setting: 100 bar

RELIEF VALVE ADJUSTMENT
Unscrew dome cover and adjust screw inwards to increase pressure setting. Factory set at 100 bar.



DISPLACEMENT CM ³	D °	E °	ACTUAL DISPLACEMENT CM ³	PRESSURE BAR		MASS KG	CODE WITH BELLOWS
				WORK P.	MAX		
20	32	30	20,090	280	350	2,650	HP20VIS