

HYDRAULIC MOTORS

GEAR MOTORS

PRODUCT	PAGE
GROUP 2	228
GROUP 3	229



FROM
ONLY
£83.27
+VAT



QUALITY PRODUCTS



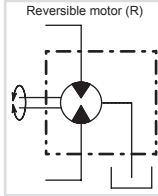
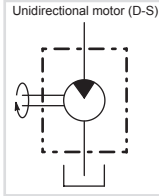
FREE ADVICE

FLOWFIT[®]
**FREE SYSTEM
EVALUATION**

Send us your
requirements
and we will
do the rest

GROUP 2

www.flowfitonline.com
TECH. DATA SHEET
GM01



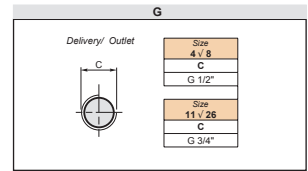
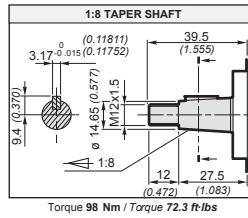
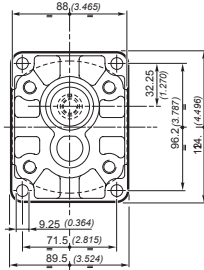
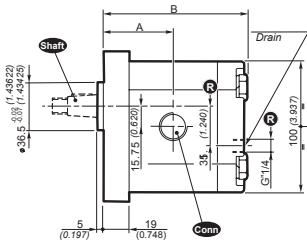
Motors with external gears from group 2 to group 3, divided into 17 displacements from 4 to 61,1cc, up to 270 bar of max working pressure and maximum speed up to 4000 rpm, with hydrostatic balance to reduce the axial slack.

Gear motors are available in unidirectional and reversible versions (reversible motors can be used same in serie circuit).

The motors are available in unidirectional D - S and reversible R version.

- Temperature 20°C + 65°C
- Max. temperature - 15°C + 80°C
- Suction allowed pressure min. 0.7 max. 3 bar (absolute)

- Recommended viscosity 15 ÷ 92 mm² /s
- Start max. viscosity 3000 mm² /s
- Filtering 26/23 150 ISO DIS 4406 until 2175 psi 23/20 ISO DIS 4406 for higher pressure



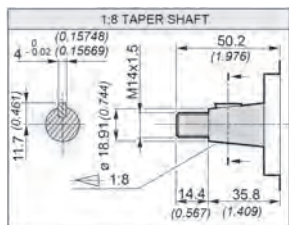
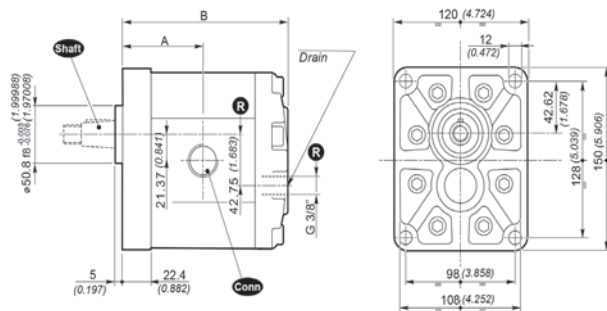
CLOCKWISE			
PART NUMBER	DISPLACEMENT (CC)	NETT. PRICE	
		£ STERLING	€ EUROS
2SMA4D10G	4	£100.93	€ 136.26
2SMA6D10G	6	£100.93	€ 136.26
2SMA8D10G	8.5	£100.93	€ 136.26
2SMA11D10G	11	£100.93	€ 136.26
2SMA14D10G	14	£100.93	€ 136.26
2SMA16D10G	16.5	£100.93	€ 136.26
2SMA19D10G	19.5	£100.93	€ 136.26
2SMA22D10G	22.5	£100.93	€ 136.26
2SMA26D10G	26	£100.93	€ 136.26

ANTI-CLOCKWISE			
PART NUMBER	DISPLACEMENT (CC)	NETT. PRICE	
		£ STERLING	€ EUROS
2SMA4S10G	4	£100.93	€ 136.26
2SMA6S10G	6	£100.93	€ 136.26
2SMA8S10G	8.5	£100.93	€ 136.26
2SMA11S10G	11	£100.93	€ 136.26
2SMA14S10G	14	£100.93	€ 136.26
2SMA16S10G	16.5	£100.93	€ 136.26
2SMA19S10G	19.5	£100.93	€ 136.26
2SMA22S10G	22.5	£100.93	€ 136.26
2SMA26S10G	26	£100.93	€ 136.26

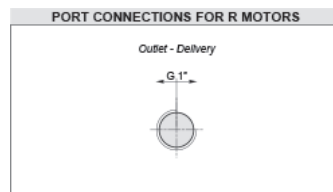
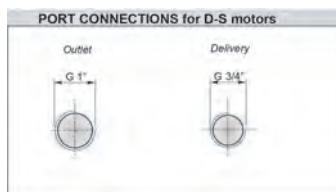
REVERSIBLE (WITH EXTERNAL DRAIN)			
PART NUMBER	DISPLACEMENT (CC)	NETT. PRICE	
		£ STERLING	€ EUROS
2SMA4R10G	4	£124.74	€ 168.40
2SMA6R10G	6	£124.74	€ 168.40
2SMA8R10G	8.5	£124.74	€ 168.40
2SMA11R10G	11	£124.74	€ 168.40
2SMA14R10G	14	£124.74	€ 168.40
2SMA16R10G	16.5	£124.74	€ 168.40
2SMA19R10G	19.5	£124.74	€ 168.40
2SMA22R10G	22.5	£124.74	€ 168.40
2SMA26R10G	26	£124.74	€ 168.40

GROUP 3

www.flowfitonline.com
TECH. DATA SHEET
GM02



Torque 240 Nm / Torque 177 ft-lbs



CLOCKWISE			
PART NUMBER	DISPLACEMENT (CC)	NETT. PRICE	
		£ STERLING	€ EUROS
3SMA19D10G	19	£236.47	€ 319.23
3SMA22D10G	22.3	£236.47	€ 319.23
3SMA29D10G	29.3	£236.47	€ 319.23
3SMA33D10G	32.9	£236.47	€ 319.23
3SMA36D10G	36.4	£236.47	€ 319.23
3SMA44D10G	43.5	£236.47	€ 319.23
3SMA52D10G	51.7	£236.47	€ 319.23
3SMA62D10G	61.1	£236.47	€ 319.23

FOR ALL POWER CALCULATIONS AND PERFORMANCE GRAPHS PLEASE DOWNLOAD TECHNICAL DATA

ANTI-CLOCKWISE			
PART NUMBER	DISPLACEMENT (CC)	NETT. PRICE	
		£ STERLING	€ EUROS
3SMA19S10G	19	£236.47	€ 319.23
3SMA22S10G	22.3	£236.47	€ 319.23
3SMA29S10G	29.3	£236.47	€ 319.23
3SMA33S10G	32.9	£236.47	€ 319.23
3SMA36S10G	36.4	£236.47	€ 319.23
3SMA44S10G	43.5	£236.47	€ 319.23
3SMA52S10G	51.7	£236.47	€ 319.23
3SMA62S10G	61.1	£236.47	€ 319.23

REVERSIBLE (WITH EXTERNAL DRAIN)			
PART NUMBER	DISPLACEMENT (CC)	NETT. PRICE	
		£ STERLING	€ EUROS
3SMA19R10G	19	£255.38	€ 344.76
3SMA22R10G	22.3	£255.38	€ 344.76
3SMA29R10G	29.3	£255.38	€ 344.76
3SMA33R10G	32.9	£255.38	€ 344.76
3SMA36R10G	36.4	£255.38	€ 344.76
3SMA44R10G	43.5	£255.38	€ 344.76
3SMA52R10G	51.7	£255.38	€ 344.76
3SMA62R10G	61.1	£255.38	€ 344.76