

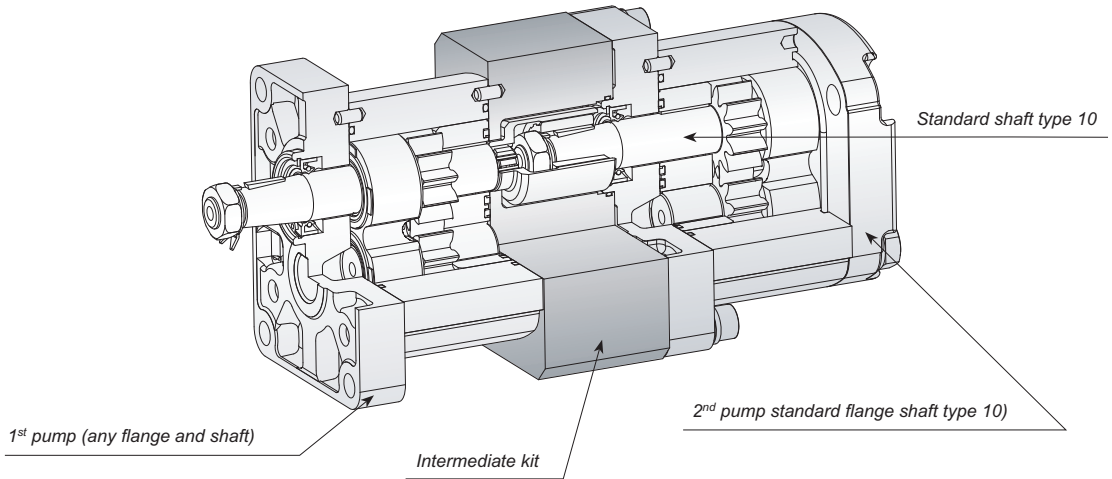


## DESIGNATION

### ORDERING CODE – TANDEMS

#### Tandem STANDARD

Are possible different combinations of all the group pumps (Gr.1 - Gr.2 - Gr.3 and Gr.4).  
The suction of each pump is independent.



Example of ordering code

**2SP A14 + 1SP A4.2 D SAE A - 10 G (VT)**

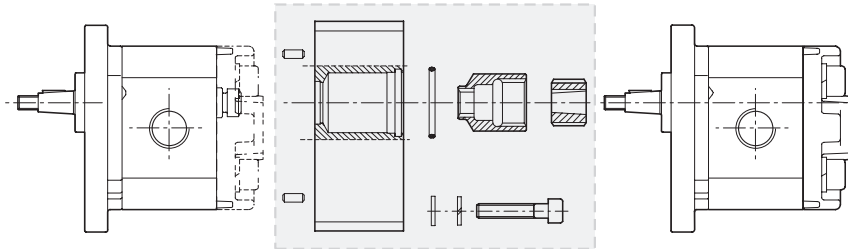
<b>2SP A14</b>	First pump type	
<b>1SP A4.2</b>	Second pump type	
<b>D</b>	Clockwise rotation	<b>D</b> = Clockwise rotation <b>S</b> = Anticlockwise rotation
<b>SAE A</b>	Flange and version first pump flange	See corresponding single pump
<b>10</b>	Shaft type first pump	
<b>G</b>	Connections type	
<b>(VT)</b>	Optional	

Example of ordering code

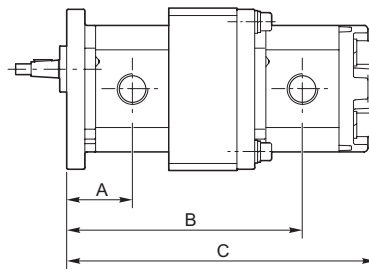
**3SP A36 + 2SP A14 + 1SP A3.2 D SAE B - 10 G (VT)**

<b>3SP A36</b>	First pump type	
<b>2SP A14</b>	Second pump type	
<b>1SP A3.2</b>	Third pump type	
<b>D</b>	Clockwise rotation	<b>D</b> = Clockwise rotation <b>S</b> = Anticlockwise rotation
<b>SAE B</b>	Flange and version first pump flange	See corresponding single pump
<b>10</b>	Shaft type first pump	
<b>G</b>	Connections type	
<b>(VT)</b>	Optional	

## GROUP 1 + GROUP 1



kit order code **01091100000000**



kit order code **01091100000000**

kit order code **01091100000000**

		mm (inch)		
		A	B	C
1SP A9.8	A9.8	52.2 (2.053)	177.9 (7.006)	234.1 (9.217)
	A7.8	52.2 (2.053)	174.0 (6.850)	226.2 (8.906)
	A6.3	52.2 (2.053)	171.2 (6.738)	220.5 (8.681)
	A5.0	52.2 (2.053)	168.6 (6.638)	215.4 (8.480)
	A4.2	52.2 (2.053)	167.1 (6.577)	212.3 (8.358)
	A3.7	52.2 (2.053)	166.1 (6.539)	210.4 (8.283)
	A3.2	52.2 (2.053)	165.1 (6.500)	208.4 (8.205)
	A2.5	52.2 (2.053)	163.8 (6.447)	205.7 (8.098)
	A2.0	52.2 (2.053)	162.8 (6.407)	203.7 (8.020)
	A1.6	52.2 (2.053)	162.0 (6.378)	202.2 (7.961)
	A1.2	52.2 (2.053)	161.2 (6.344)	200.5 (7.894)
	A0.9	52.2 (2.053)	160.6 (6.323)	199.4 (7.850)

		mm (inch)		
		A	B	C
1SP A7.8	A7.8	48.2 (1.898)	166.1 (6.539)	218.3 (8.594)
	A6.3	48.2 (1.898)	163.3 (6.427)	212.6 (8.370)
	A5.0	48.2 (1.898)	160.7 (6.327)	207.5 (8.169)
	A4.2	48.2 (1.898)	159.2 (6.266)	204.4 (8.047)
	A3.7	48.2 (1.898)	158.2 (6.228)	202.5 (7.972)
	A3.2	48.2 (1.898)	157.2 (6.189)	200.5 (7.894)
	A2.5	48.2 (1.898)	155.9 (6.136)	197.8 (7.787)
	A2.0	48.2 (1.898)	154.9 (6.096)	195.8 (7.709)
	A1.6	48.2 (1.898)	154.1 (6.067)	194.3 (7.650)
	A1.2	48.2 (1.898)	153.3 (6.033)	192.6 (7.583)
	A0.9	48.2 (1.898)	152.7 (6.012)	191.5 (7.539)

With SAE AA flange increase A, B, and C dimensions of 0.138 inch

## GROUP 1 + GROUP 1



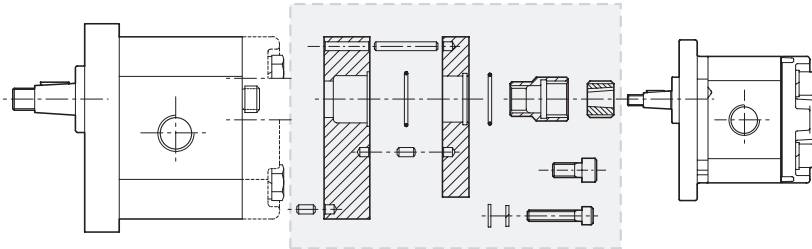
kit order code 01091100000000

kit order code 01091100000000

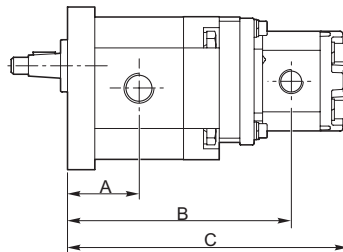
		mm (inch)		
		A	B	C
1SP A6.3	A6.3	45.4 (1.785)	157.6 (6.203)	206.9 (8.146)
	A5.0	45.4 (1.785)	155.0 (6.102)	201.8 (7.945)
	A4.2	45.4 (1.785)	153.5 (6.041)	198.7 (7.823)
	A3.7	45.4 (1.785)	152.5 (6.004)	196.8 (7.748)
	A3.2	45.4 (1.785)	151.5 (5.965)	194.8 (7.669)
	A2.5	45.4 (1.785)	150.2 (5.911)	192.1 (7.563)
	A2.0	45.4 (1.785)	149.2 (5.872)	190.1 (7.484)
	A1.6	45.4 (1.785)	148.4 (5.843)	188.6 (7.425)
	A1.2	45.4 (1.785)	147.6 (5.809)	186.9 (7.358)
	A0.9	45.4 (1.785)	147.0 (5.787)	185.8 (7.315)
1SP A5.0	A5.0	42.8 (1.685)	149.9 (5.902)	196.7 (7.744)
	A4.2	42.8 (1.685)	148.4 (5.841)	193.6 (7.622)
	A3.7	42.8 (1.685)	147.4 (5.803)	191.7 (7.547)
	A3.2	42.8 (1.685)	146.4 (5.764)	189.7 (7.469)
	A2.5	42.8 (1.685)	145.1 (5.711)	187.0 (7.362)
	A2.0	42.8 (1.685)	144.1 (5.671)	185.0 (7.283)
	A1.6TC	42.8 (1.685)	143.3 (5.642)	183.5 (7.224)
	A1.2TC	42.8 (1.685)	142.5 (5.608)	181.8 (7.157)
	A0.9TC	42.8 (1.685)	141.9 (5.587)	180.7 (7.114)
	1SP A4.2	A4.2TC	41.3 (1.624)	145.3 (5.719)
A3.7TC		41.3 (1.624)	144.3 (5.681)	188.6 (7.425)
A3.2TC		41.3 (1.624)	143.3 (5.642)	186.6 (7.346)
A2.5TC		41.3 (1.624)	141.9 (5.589)	183.9 (7.240)
A2.0TC		41.3 (1.624)	140.9 (5.549)	181.9 (7.161)
A1.6TC		41.3 (1.624)	140.2 (5.520)	180.4 (7.102)
A1.2TC		41.3 (1.624)	139.4 (5.486)	178.7 (7.035)
A0.9TC		41.3 (1.624)	138.8 (5.465)	177.6 (6.992)

		mm (inch)				
		A	B	C		
1SP A3.7	A3.7TC	40.3 (1.587)	142.4 (5.606)	186.7 (7.350)		
	A3.2TC	40.3 (1.587)	141.4 (5.567)	184.7 (7.272)		
	A2.5TC	40.3 (1.587)	140.1 (5.514)	182.0 (7.165)		
	A2.0TC	40.3 (1.587)	139.1 (5.474)	180.0 (7.087)		
	A1.6TC	40.3 (1.587)	138.3 (5.445)	178.5 (7.028)		
	A1.2TC	40.3 (1.587)	137.5 (5.411)	176.8 (6.961)		
	A0.9TC	40.3 (1.587)	136.9 (5.390)	175.7 (6.917)		
	1SP A3.2	A3.2TC	39.3 (1.547)	139.4 (5.488)	182.7 (7.193)	
		A2.5TC	39.3 (1.547)	138.1 (5.435)	180.0 (7.087)	
		A2.0TC	39.3 (1.547)	137.1 (5.396)	178.0 (7.008)	
A1.6TC		39.3 (1.547)	136.3 (5.366)	176.5 (6.949)		
A1.2TC		39.3 (1.547)	135.5 (5.333)	174.8 (6.882)		
A0.9TC		39.3 (1.547)	134.9 (5.311)	173.7 (6.839)		
1SP A2.5		A2.5TC	37.9 (1.494)	135.4 (5.329)	177.3 (6.980)	
		A2.0TC	37.9 (1.494)	134.4 (5.289)	175.3 (6.902)	
		A1.6TC	37.9 (1.494)	133.6 (5.260)	173.8 (6.843)	
		A1.2TC	37.9 (1.494)	132.8 (5.226)	172.1 (6.776)	
	A0.9TC	37.9 (1.494)	132.2 (5.204)	171.0 (6.717)		
	1SP A2.0	A2.0TC	36.9 (1.455)	133.8 (5.281)	173.3 (6.823)	
		A1.6TC	36.9 (1.455)	132.8 (5.231)	171.3 (6.744)	
		A1.2TC	36.9 (1.455)	131.8 (5.181)	170.1 (6.697)	
		A0.9TC	36.9 (1.455)	130.2 (5.126)	169.0 (6.654)	
		1SP A1.6	A1.6TC	36.2 (1.425)	130.1 (5.122)	170.3 (6.705)
A1.2TC			36.2 (1.425)	129.3 (5.089)	168.6 (6.638)	
A0.9TC			36.2 (1.425)	128.7 (5.067)	167.5 (6.594)	
1SP A1.2			A1.2TC	35.4 (1.392)	127.6 (5.022)	166.9 (6.571)
			A0.9TC	35.4 (1.392)	127.0 (5.000)	165.8 (6.528)
			1SP A0.9	A0.9TC	34.8 (1.370)	125.9 (4.957)

**GROUP 2 + GROUP 1**



kit order code **01092110000000**



kit order code **01092110000000**

mm (inch)

		A	B	C	
<b>2SP...26</b>	<b>+ 1SPA</b>	9.8	62.7 (2.469)	198.1 (7.797)	254.2 (10.008)
		7.8	62.7 (2.469)	194.1 (7.642)	246.3 (9.697)
	6.3	62.7 (2.469)	191.3 (7.530)	240.6 (9.472)	
		5	62.7 (2.469)	188.7 (7.429)	235.5 (9.272)
	4.2	62.7 (2.469)	187.2 (7.368)	232.4 (9.150)	
		3.7	62.7 (2.469)	186.2 (7.331)	230.5 (9.075)
	3.2	62.7 (2.469)	185.2 (7.291)	228.5 (8.996)	
		2.5	62.7 (2.469)	183.9 (7.238)	225.8 (8.890)
	2	62.7 (2.469)	182.9 (7.199)	223.8 (8.811)	
		1.6	62.7 (2.469)	182.1 (7.169)	222.3 (8.752)
	1.2	62.7 (2.469)	181.3 (7.136)	220.6 (8.685)	
		0.9	62.7 (2.469)	180.7 (7.114)	219.5 (8.642)

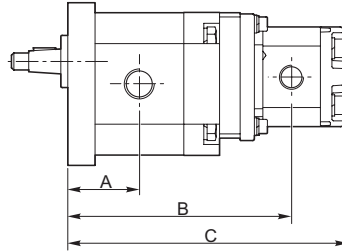
kit order code **01092110000000**

mm (inch)

		A	B	C	
<b>2SP...22</b>	<b>+ 1SPA</b>	9.8	59.8 (2.354)	192.3 (7.569)	248.4 (9.780)
		7.8	59.8 (2.354)	188.3 (7.413)	240.5 (9.469)
	6.3	59.8 (2.354)	185.5 (7.301)	234.8 (9.244)	
		5	59.8 (2.354)	182.9 (7.201)	229.7 (9.043)
	4.2	59.8 (2.354)	181.4 (7.140)	226.6 (8.921)	
		3.7	59.8 (2.354)	180.4 (7.102)	224.7 (8.846)
	3.2	59.8 (2.354)	179.4 (7.063)	222.7 (8.768)	
		2.5	59.8 (2.354)	178.05 (7.010)	220.0 (8.661)
	2	59.8 (2.354)	177.1 (6.970)	218.0 (8.583)	
		1.6	59.8 (2.354)	176.3 (6.941)	216.5 (8.524)
	1.2	59.8 (2.354)	175.5 (6.907)	214.8 (8.457)	
		0.9	59.8 (2.354)	174.9 (6.886)	213.7 (8.413)

With B80C flange increase A, B, and C dimensions of 0.079 inch  
 With E52C flange decrease A, B, and C dimensions of 0.106 inch

## GROUP 2 + GROUP 1



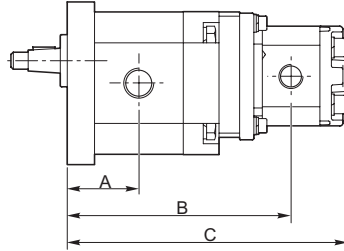
kit order code **01092110000000**

kit order code **01092110000000**

		mm (inch)		
		A	B	C
<b>2SP...19 + 1SPA</b>	9.8	57.3 (2.256)	187.3 (7.372)	243.4 (9.583)
	7.8	57.3 (2.256)	183.3 (7.217)	235.5 (9.272)
	6.3	57.3 (2.256)	180.5 (7.104)	229.8 (9.047)
	5	57.3 (2.256)	177.9 (7.004)	224.7 (8.846)
	4.2	57.3 (2.256)	176.4 (6.943)	221.6 (8.724)
	3.7	57.3 (2.256)	175.4 (6.906)	219.7 (8.650)
	3.2	57.3 (2.256)	174.4 (6.866)	217.7 (8.571)
	2.5	57.3 (2.256)	173.1 (6.813)	215.0 (8.465)
	2	57.3 (2.256)	172.1 (6.774)	213.0 (8.386)
	1.6	57.3 (2.256)	171.3 (6.744)	211.5 (8.327)
	1.2	57.3 (2.256)	170.5 (6.711)	209.8 (8.260)
	0.9	57.3 (2.256)	169.9 (6.689)	208.7 (8.217)
<b>2SP...16 + 1SPA</b>	9.8	54.8 (2.157)	182.3 (7.175)	238.4 (9.386)
	7.8	54.8 (2.157)	178.3 (7.020)	230.5 (9.075)
	6.3	54.8 (2.157)	175.5 (6.907)	224.8 (8.850)
	5	54.8 (2.157)	172.9 (6.807)	219.7 (8.650)
	4.2	54.8 (2.157)	171.4 (6.746)	216.6 (8.528)
	3.7	54.8 (2.157)	170.4 (6.709)	214.7 (8.453)
	3.2	54.8 (2.157)	169.4 (6.669)	212.7 (8.374)
	2.5	54.8 (2.157)	168.1 (6.616)	210.0 (8.268)
	2	54.8 (2.157)	167.1 (6.577)	208.0 (8.189)
	1.6	54.8 (2.157)	166.3 (6.547)	206.5 (8.130)
	1.2	54.8 (2.157)	165.5 (6.514)	204.8 (8.063)
	0.9	54.8 (2.157)	164.9 (6.492)	203.7 (8.020)

		mm (inch)		
		A	B	C
<b>2SP...14 + 1SPA</b>	9.8	52.7 (2.075)	178.1 (7.010)	234.2 (9.220)
	7.8	52.7 (2.075)	174.1 (6.854)	226.3 (8.909)
	6.3	52.7 (2.075)	171.3 (6.742)	220.6 (8.685)
	5	52.7 (2.075)	168.7 (6.642)	215.5 (8.484)
	4.2	52.7 (2.075)	167.2 (6.581)	212.4 (8.362)
	3.7	52.7 (2.075)	166.2 (6.543)	210.5 (8.287)
	3.2	52.7 (2.075)	165.2 (6.504)	208.5 (8.209)
	2.5	52.7 (2.075)	163.9 (6.451)	205.8 (8.102)
	2	52.7 (2.075)	162.9 (6.411)	203.8 (8.024)
	1.6	52.7 (2.075)	162.1 (6.382)	202.3 (7.965)
	1.2	52.7 (2.075)	161.3 (6.348)	200.6 (7.898)
	0.9	52.7 (2.075)	160.7 (6.327)	199.5 (7.854)
<b>2SP...11 + 1SPA</b>	9.8	50.2 (1.976)	173.1 (6.813)	229.2 (9.024)
	7.8	50.2 (1.976)	169.1 (6.657)	221.3 (8.713)
	6.3	50.2 (1.976)	166.3 (6.545)	215.6 (8.488)
	5	50.2 (1.976)	163.7 (6.445)	210.5 (8.287)
	4.2	50.2 (1.976)	162.2 (6.384)	207.4 (8.165)
	3.7	50.2 (1.976)	161.2 (6.346)	205.5 (8.091)
	3.2	50.2 (1.976)	160.2 (6.307)	203.5 (8.012)
	2.5	50.2 (1.976)	158.9 (6.254)	200.8 (7.906)
	2	50.2 (1.976)	157.9 (6.215)	198.8 (7.827)
	1.6	50.2 (1.976)	157.1 (6.185)	197.3 (7.768)
	1.2	50.2 (1.976)	156.3 (6.152)	195.6 (7.701)
	0.9	50.2 (1.976)	155.7 (6.130)	194.5 (7.657)

**GROUP 2 + GROUP 1**



kit order code **010921100000000**

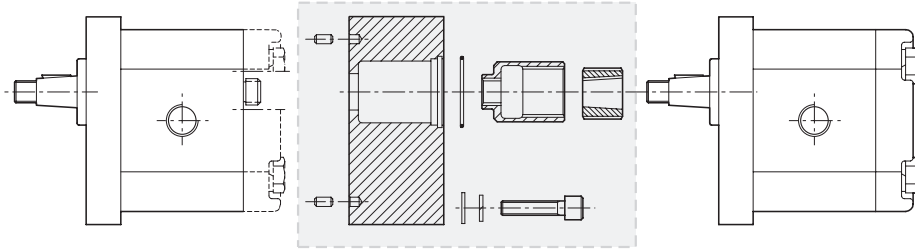
kit order code **010921100000000**

		mm (inch)		
		A	B	C
<b>2SP...8 + 1SPA</b>	9.8	48.2 (1.896)	168.9 (6.652)	225.1 (8.862)
	7.8	48.2 (1.896)	165.0 (6.496)	217.2 (8.551)
	6.3	48.2 (1.896)	162.2 (6.384)	211.5 (8.327)
	5	48.2 (1.896)	159.6 (6.283)	206.4 (8.126)
	4.2	48.2 (1.896)	158.1 (6.222)	203.3 (8.004)
	3.7	48.2 (1.896)	157.1 (6.185)	201.4 (7.929)
	3.2	48.2 (1.896)	156.1 (6.146)	199.4 (7.850)
	2.5	48.2 (1.896)	154.8 (6.093)	196.7 (7.744)
	2	48.2 (1.896)	153.8 (6.053)	194.7 (7.665)
	1.6	48.2 (1.896)	153.0 (6.024)	193.2 (7.606)
	1.2	48.2 (1.896)	152.2 (5.990)	191.5 (7.539)
	0.9	48.2 (1.896)	151.6 (5.969)	190.4 (7.496)
<b>2SP...6 + 1SPA</b>	9.8	46.1 (1.813)	164.8 (6.486)	220.9 (8.697)
	7.8	46.1 (1.813)	160.8 (6.331)	213.0 (8.386)
	6.3	46.1 (1.813)	157.9 (6.219)	207.3 (8.161)
	5	46.1 (1.813)	155.4 (6.118)	202.2 (7.961)
	4.2	46.1 (1.813)	153.9 (6.057)	199.1 (7.839)
	3.7	46.1 (1.813)	152.9 (6.020)	197.2 (7.764)
	3.2	46.1 (1.813)	151.9 (5.980)	195.2 (7.685)
	2.5	46.1 (1.813)	150.6 (5.927)	192.5 (7.579)
	2	46.1 (1.813)	149.6 (5.888)	190.5 (7.500)
	1.6	46.1 (1.813)	148.8 (5.858)	189.0 (7.441)
	1.2	46.1 (1.813)	147.9 (5.825)	187.3 (7.374)
	0.9	46.1 (1.813)	147.4 (5.803)	186.2 (7.331)

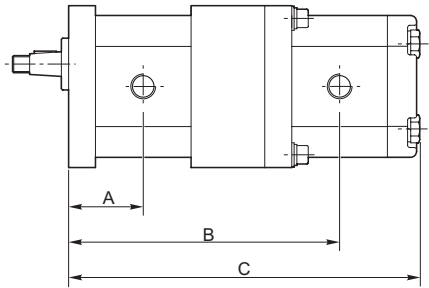
		mm (inch)		
		A	B	C
<b>2SP...4 + 1SPA</b>	9.8	44.4 (1.748)	168.9 (6.652)	217.6 (8.567)
	7.8	44.4 (1.748)	194.1 (7.642)	209.7 (8.256)
	6.3	44.4 (1.748)	191.3 (7.530)	204.0 (8.032)
	5	44.4 (1.748)	188.7 (7.429)	198.9 (7.831)
	4.2	44.4 (1.748)	187.2 (7.368)	195.8 (7.709)
	3.7	44.4 (1.748)	186.2 (7.331)	193.9 (7.634)
	3.2	44.4 (1.748v)	185.2 (7.291)	191.9 (7.555)
	2.5	44.4 (1.748)	183.9 (7.238)	189.2 (7.449)
	2	44.4 (1.748)	182.9 (7.199)	187.2 (7.370)
	1.6	44.4 (1.748)	182.1 (7.169)	185.7 (7.311)
	1.2	44.4 (1.748)	181.3 (7.136)	184.0 (7.244)
	0.9	44.4 (1.748)	180.7 (7.114)	182.9 (7.201)

With B80C flange increase A, B, and C dimensions of 0.079 inch  
 With E52C flange decrease A, B, and C dimensions of 0.106 inch

## GROUP 2 + GROUP 2



kit order code **01092200000000**



kit order code **01092200000000**

mm (inch)

				A	B	C
<b>2SP ...4</b>	<b>+</b>	<b>2SP ...</b>	<b>4</b>	44.4 (1.748)	166.2 (6.543)	214.8 (8.457)
			<b>6</b>	46.0 (1.811)	171.2 (6.740)	221.4 (8.717)
<b>2SP ...6</b>	<b>+</b>	<b>2SP ...</b>	<b>4</b>	46.0 (1.811)	169.5 (6.673)	218.1 (8.587)
			<b>8</b>	48.1 (1.894)	177.5 (6.988)	229.8 (9.047)
<b>2SP ...8</b>	<b>+</b>	<b>2SP ...</b>	<b>6</b>	48.1 (1.894)	175.4 (6.906)	225.6 (8.882)
			<b>4</b>	48.1 (1.894)	173.7 (6.839)	222.3 (8.752)

kit order code **01092200000000**

mm (inch)

				A	B	C
<b>2SP ...11</b>	<b>+</b>	<b>2SP ...</b>	<b>11</b>	50.2 (1.976)	183.6 (7.228)	238.0 (9.370)
			<b>8</b>	50.2 (1.976)	181.6 (7.150)	233.9 (9.209)
			<b>6</b>	50.2 (1.976)	179.5 (7.067)	229.7 (9.043)
<b>2SP ...14</b>	<b>+</b>	<b>2SP ...</b>	<b>4</b>	50.2 (1.976)	177.8 (7.000)	226.4 (8.913)
			<b>14</b>	52.7 (2.075)	191.1 (7.524)	248.0 (9.764)
			<b>11</b>	52.7 (2.075)	188.6 (7.425)	243.0 (9.567)
<b>2SP ...14</b>	<b>+</b>	<b>2SP ...</b>	<b>8</b>	52.7 (2.075)	186.6 (7.346)	238.9 (9.406)
			<b>6</b>	52.7 (2.075)	184.5 (7.264)	234.7 (9.240)
			<b>4</b>	52.7 (2.075)	182.8 (7.197)	231.4 (9.110)



## GROUP 2 + GROUP 2

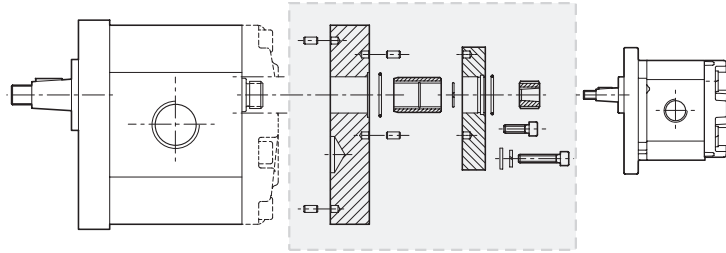
kit order code **01092200000000**

		mm (inch)		
		A	B	C
<b>2SP ...16 + 2SP ...</b>	<b>16</b>	54.8 (2.157)	197.4 (7.772)	256.4 (10.094)
	<b>14</b>	54.8 (2.157)	195.3 (7.689)	252.2 (9.929)
	<b>11</b>	54.8 (2.157)	192.8 (7.591)	247.2 (9.732)
	<b>8</b>	54.8 (2.157)	190.8 (7.512)	243.1 (9.571)
	<b>6</b>	54.8 (2.157)	188.7 (7.429)	238.9 (9.406)
	<b>4</b>	54.8 (2.157)	187.0 (7.362)	235.6 (9.276)
<b>2SP ...19 + 2SP ...</b>	<b>19</b>	57.3 (2.256)	204.9 (8.067)	266.4 (10.488)
	<b>16</b>	57.3 (2.256)	202.4 (7.969)	261.4 (10.291)
	<b>14</b>	57.3 (2.256)	200.3 (7.886)	257.2 (10.126)
	<b>11</b>	57.3 (2.256)	197.8 (7.787)	252.2 (9.929)
	<b>8</b>	57.3 (2.256)	195.8 (7.709)	248.1 (9.768)
	<b>6</b>	57.3 (2.256)	193.7 (7.626)	243.9 (9.602)
<b>2SP ...22 + 2SP ...</b>	<b>22</b>	59.8 (2.354)	212.4 (8.362)	276.4 (10.882)
	<b>19</b>	59.8 (2.354)	209.9 (8.264)	271.4 (10.685)
	<b>16</b>	59.8 (2.354)	207.4 (8.165)	266.4 (10.488)
	<b>14</b>	59.8 (2.354)	205.3 (8.083)	262.2 (10.323)
	<b>11</b>	59.8 (2.354)	202.8 (7.984)	257.2 (10.126)
	<b>8</b>	59.8 (2.354)	200.8 (7.906)	253.1 (9.965)
<b>6</b>	59.8 (2.354)	198.7 (7.823)	248.9 (9.799)	
<b>4</b>	59.8 (2.354)	197.0 (7.756)	245.6 (9.669)	

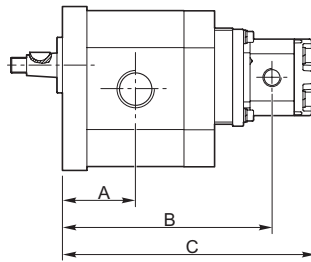
kit order code **01092200000000**

		mm (inch)		
		A	B	C
<b>2SP ...26 + 2SP ...</b>	<b>26</b>	62.7 (2.469)	221.1 (8.705)	288.0 (11.339)
	<b>22</b>	62.7 (2.469)	218.2 (8.591)	282.2 (11.110)
	<b>19</b>	62.7 (2.469)	215.7 (8.492)	277.2 (10.913)
	<b>16</b>	62.7 (2.469)	213.2 (8.394)	272.2 (10.717)
	<b>14</b>	62.7 (2.469)	211.1 (8.311)	268.0 (10.551)
	<b>11</b>	62.7 (2.469)	208.6 (8.213)	263.0 (10.354)
<b>2SP ...26 + 2SP ...</b>	<b>8</b>	62.7 (2.469)	206.6 (8.134)	258.9 (10.193)
	<b>6</b>	62.7 (2.469)	204.5 (8.051)	254.7 (10.028)
	<b>4</b>	62.7 (2.469)	202.8 (7.984)	251.4 (9.898)

**GROUP 3 + GROUP 1**



kit order code **01093110000000**



kit order code **01093110000000**

kit order code **01093110000000**

		mm (inch)		
		A	B	C
<b>3SP...62 + 1SPA</b>	<b>9.8</b>	80.4 (3.163)	234.9 (9.250)	291.1 (11.461)
	<b>7.8</b>	80.4 (3.163)	231.0 (9.094)	283.2 (11.150)
	<b>6.3</b>	80.4 (3.163)	228.2 (8.982)	277.5 (10.925)
	<b>5</b>	80.4 (3.163)	225.6 (8.882)	272.4 (10.724)
	<b>4.2</b>	80.4 (3.163)	224.1 (8.821)	269.3 (10.602)
	<b>3.7</b>	80.4 (3.163)	223.1 (8.783)	267.4 (10.528)
	<b>3.2</b>	80.4 (3.163)	222.1 (8.744)	265.4 (10.449)
	<b>2.5</b>	80.4 (3.163)	220.8 (8.691)	262.7 (10.343)
	<b>2</b>	80.4 (3.163)	219.8 (8.652)	260.7 (10.264)
	<b>1.6</b>	80.4 (3.163)	219.0 (8.622)	259.2 (10.205)
	<b>1.2</b>	80.4 (3.163)	218.2 (8.589)	257.5 (10.138)
	<b>0.9</b>	80.4 (3.163)	217.6 (8.567)	256.4 (10.094)

		mm (inch)		
		A	B	C
<b>3SP...52 + 1SPA</b>	<b>9.8</b>	76.4 (3.006)	226.9 (8.935)	283.1 (11.146)
	<b>7.8</b>	76.4 (3.006)	223.0 (8.780)	275.2 (10.835)
	<b>6.3</b>	76.4 (3.006)	220.2 (8.667)	269.5 (10.610)
	<b>5</b>	76.4 (3.006)	217.6 (8.567)	264.4 (10.409)
	<b>4.2</b>	76.4 (3.006)	216.1 (8.506)	261.3 (10.287)
	<b>3.7</b>	76.4 (3.006)	215.1 (8.469)	259.4 (10.213)
	<b>3.2</b>	76.4 (3.006)	214.1 (8.429)	257.4 (10.134)
	<b>2.5</b>	76.4 (3.006)	212.8 (8.376)	254.7 (10.028)
	<b>2</b>	76.4 (3.006)	211.8 (8.337)	252.7 (9.949)
	<b>1.6</b>	76.4 (3.006)	211.0 (8.307)	251.2 (9.890)
<b>1.2</b>	76.4 (3.006)	210.2 (8.274)	249.5 (9.823)	
<b>0.9</b>	76.4 (3.006)	209.6 (8.252)	248.4 (9.780)	

With SAE B flange increase A, B, and C dimensions of 0.118 inch

## GROUP 3 + GROUP 1

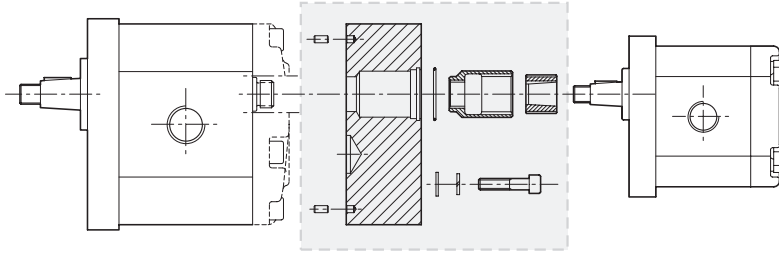
kit order code **01093110000000**

kit order code **01093110000000**

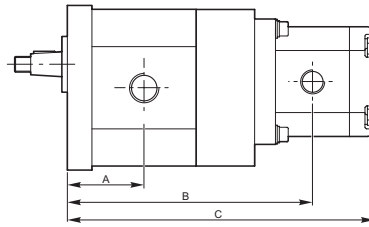
		mm (inch)					
		A	B	C			
<b>3SP...44</b>	<b>+ 1SPA</b>	9.8	72.9 (2.868)	219.9 (8.659)	276.1 (10.870)		
		7.8	72.9 (2.868)	216.0 (8.504)	268.2 (10.559)		
		6.3	72.9 (2.868)	213.2 (8.392)	262.5 (10.335)		
		5	72.9 (2.868)	210.6 (8.291)	257.4 (10.134)		
		4.2	72.9 (2.868)	209.1 (8.230)	254.3 (10.012)		
		3.7	72.9 (2.868)	208.1 (8.193)	252.4 (9.937)		
		3.2	72.9 (2.868)	207.1 (8.154)	250.4 (9.858)		
		2.5	72.9 (2.868)	205.8 (8.100)	247.7 (9.752)		
		2	72.9 (2.868)	204.8 (8.061)	245.7 (9.673)		
		1.6	72.9 (2.868)	204.0 (8.032)	244.2 (9.614)		
		1.2	72.9 (2.868)	203.2 (7.998)	242.5 (9.547)		
		0.9	72.9 (2.868)	202.6 (7.976)	241.4 (9.504)		
		<b>3SP...36</b>	<b>+ 1SPA</b>	9.8	69.9 (2.750)	213.9 (8.423)	270.1 (10.634)
				7.8	68.4 (2.691)	210.0 (8.268)	262.2 (10.323)
				6.3	69.9 (2.750)	207.2 (8.156)	256.5 (10.098)
5	69.9 (2.750)			204.6 (8.055)	251.4 (9.898)		
4.2	69.9 (2.750)			203.1 (7.994)	248.3 (9.776)		
3.7	69.9 (2.750)			202.1 (7.957)	246.4 (9.701)		
3.2	69.9 (2.750)			201.1 (7.917)	244.4 (9.622)		
2.5	69.9 (2.750)			199.8 (7.864)	241.7 (9.516)		
2	69.9 (2.750)			198.8 (7.825)	239.7 (9.437)		
1.6	69.9 (2.750)			198.0 (7.795)	238.2 (9.378)		
1.2	69.9 (2.750)			197.2 (7.762)	236.5 (9.311)		
0.9	69.9 (2.750)			196.60 (7.740)	235.4 (9.268)		
<b>3SP...33</b>	<b>+ 1SPA</b>			9.8	68.4 (2.691)	210.9 (8.305)	267.1 (10.516)
				7.8	68.4 (2.691)	207.0 (8.150)	259.2 (10.205)
				6.3	68.4 (2.691)	204.2 (8.037)	253.5 (9.980)
		5	68.4 (2.691)	201.6 (7.937)	248.4 (9.780)		
		4.2	68.4 (2.691)	200.4 (7.876)	245.3 (9.657)		
		3.7	68.4 (2.691)	199.1 (7.839)	243.4 (9.583)		
		3.2	68.4 (2.691)	198.1 (7.799)	241.4 (9.504)		
		2.5	68.4 (2.691)	196.8 (7.746)	238.7 (9.398)		
		2	68.4 (2.691)	195.8 (7.707)	236.7 (9.319)		
		1.6	68.4 (2.691)	195.0 (7.677)	235.2 (9.260)		
		1.2	68.4 (2.691)	194.2 (7.644)	233.5 (9.193)		
		0.9	68.4 (2.691)	193.6 (7.622)	232.4 (9.150)		

		mm (inch)					
		A	B	C			
<b>3SP...29</b>	<b>+ 1SPA</b>	9.8	66.9 (2.632)	207.9 (8.187)	264.1 (10.398)		
		7.8	66.9 (2.632)	204.0 (8.032)	256.2 (10.087)		
		6.3	66.9 (2.632)	201.2 (7.919)	250.5 (9.862)		
		5	66.9 (2.632)	198.6 (7.819)	245.4 (9.661)		
		4.2	66.9 (2.632)	197.1 (7.758)	242.3 (9.539)		
		3.7	66.9 (2.632)	196.1 (7.720)	240.4 (9.465)		
		3.2	66.9 (2.632)	195.1 (7.681)	238.4 (9.386)		
		2.5	66.9 (2.632)	193.8 (7.628)	235.7 (9.280)		
		2	66.9 (2.632)	192.8 (7.589)	233.7 (9.201)		
		1.6	66.9 (2.632)	192.0 (7.559)	232.2 (9.142)		
		1.2	66.9 (2.632)	191.2 (7.526)	230.5 (9.075)		
		0.9	66.9 (2.632)	190.6 (7.504)	229.4 (9.032)		
		<b>3SP...22</b>	<b>+ 1SPA</b>	9.8	63.9 (2.514)	201.9 (7.951)	258.1 (10.161)
				7.8	63.9 (2.514)	198.0 (7.795)	250.2 (9.850)
				6.3	63.9 (2.514)	195.2 (7.683)	244.5 (9.626)
5	63.9 (2.514)			192.6 (7.583)	239.4 (9.425)		
4.2	63.9 (2.514)			191.1 (7.522)	236.3 (9.303)		
3.7	63.9 (2.514)			190.1 (7.484)	234.4 (9.228)		
3.2	63.9 (2.514)			189.1 (7.445)	232.4 (9.150)		
2.5	63.9 (2.514)			187.8 (7.392)	229.7 (9.043)		
2	63.9 (2.514)			186.8 (7.352)	227.7 (8.965)		
1.6	63.9 (2.514)			186.0 (7.323)	226.2 (8.906)		
1.2	63.9 (2.514)			185.2 (7.289)	224.5 (8.839)		
0.9	63.9 (2.514)			184.6 (7.268)	223.4 (8.795)		
<b>3SP...19</b>	<b>+ 1SPA</b>			9.8	62.4 (2.455)	198.9 (7.833)	255.1 (10.043)
				7.8	62.4 (2.455)	195.0 (7.677)	247.2 (9.732)
				6.3	62.4 (2.455)	192.2 (7.565)	241.5 (9.508)
		5	62.4 (2.455)	189.6 (7.465)	236.4 (9.307)		
		4.2	62.4 (2.455)	188.1 (7.404)	233.3 (9.185)		
		3.7	62.4 (2.455)	187.1 (7.366)	231.4 (9.110)		
		3.2	62.4 (2.455)	186.1 (7.327)	229.4 (9.032)		
		2.5	62.4 (2.455)	184.8 (7.274)	226.7 (8.925)		
		2	62.4 (2.455)	183.8 (7.234)	224.7 (8.846)		
		1.6	62.4 (2.455)	183.0 (7.205)	223.2 (8.787)		
		1.2	62.4 (2.455)	182.2 (7.171)	221.5 (8.720)		
		0.9	62.4 (2.455)	181.6 (7.150)	220.4 (8.677)		

**GROUP 3 + GROUP 2**



kit order code **01093200000000**



kit order code **01093200000000**

mm (inch)

		A	B	C
<b>3SP ...62 + 2SP</b>	<b>26</b>	80.4 (3.165)	257.0 (10.118)	323.9 (12.752)
	<b>22</b>	80.4 (3.165)	254.1 (10.004)	318.1 (12.524)
	<b>19</b>	80.4 (3.165)	251.6 (9.906)	313.1 (12.327)
	<b>16</b>	80.4 (3.165)	249.1 (9.807)	308.1 (12.130)
	<b>14</b>	80.4 (3.165)	247.0 (9.724)	303.9 (11.965)
	<b>11</b>	80.4 (3.165)	244.5 (9.626)	298.9 (11.768)
	<b>8</b>	80.4 (3.165)	242.4 (9.543)	294.8 (11.606)
	<b>6</b>	80.4 (3.165)	240.3 (9.461)	290.6 (11.441)
	<b>4</b>	80.4 (3.165)	238.7 (9.398)	287.3 (11.311)

kit order code **01093200000000**

mm (inch)

		A	B	C
<b>3SP ...52 + 2SP</b>	<b>26</b>	76.4 (3.008)	249.0 (9.803)	315.9 (12.437)
	<b>22</b>	76.4 (3.008)	246.1 (9.689)	310.1 (12.209)
	<b>19</b>	76.4 (3.008)	243.6 (9.591)	305.1 (12.012)
	<b>16</b>	76.4 (3.008)	241.1 (9.492)	300.1 (11.815)
	<b>14</b>	76.4 (3.008)	239.0 (9.409)	295.9 (11.650)
	<b>11</b>	76.4 (3.008)	236.5 (9.311)	290.9 (11.453)
	<b>8</b>	76.4 (3.008)	234.4 (9.228)	286.8 (11.291)
	<b>6</b>	76.4 (3.008)	232.3 (9.146)	282.6 (11.126)
	<b>4</b>	76.4 (3.008)	230.7 (9.083)	279.3 (10.996)

## GROUP 3 + GROUP 2

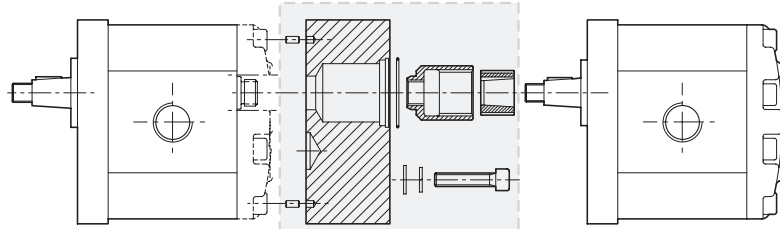
kit order code **01093200000000**

kit order code **01093200000000**

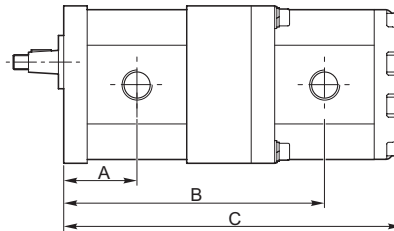
		mm (inch)		
		A	B	C
<b>3SP ...44 + 2SP</b>	<b>26</b>	72.9 (2.870)	242.0 (9.528)	308.9 (12.161)
	<b>22</b>	72.9 (2.870)	239.1 (9.413)	303.1 (11.933)
	<b>19</b>	72.9 (2.870)	236.6 (9.315)	298.1 (11.736)
	<b>16</b>	72.9 (2.870)	234.1 (9.217)	293.1 (11.539)
	<b>14</b>	72.9 (2.870)	232.0 (9.134)	288.9 (11.374)
	<b>11</b>	72.9 (2.870)	229.5 (9.035)	283.9 (11.177)
	<b>8</b>	72.9 (2.870)	227.4 (8.953)	279.8 (11.016)
	<b>6</b>	72.9 (2.870)	225.3 (8.870)	275.6 (10.850)
	<b>4</b>	72.9 (2.870)	223.7 (8.807)	272.3 (10.720)
	<b>3SP ...36 + 2SP</b>	<b>26</b>	69.9 (2.752)	236.0 (9.291)
<b>22</b>		69.9 (2.752)	233.1 (9.177)	297.1 (11.697)
<b>19</b>		69.9 (2.752)	230.6 (9.079)	292.1 (11.500)
<b>16</b>		69.9 (2.752)	228.1 (8.980)	287.1 (11.303)
<b>14</b>		69.9 (2.752)	226.0 (8.898)	282.9 (11.138)
<b>11</b>		69.9 (2.752)	223.5 (8.799)	277.9 (10.941)
<b>8</b>		69.9 (2.752)	221.4 (8.717)	273.8 (10.780)
<b>6</b>		69.9 (2.752)	219.3 (8.634)	269.6 (10.614)
<b>4</b>		69.9 (2.752)	217.7 (8.571)	266.3 (10.484)
<b>3SP ...33 + 2SP</b>		<b>26</b>	68.4 (2.693)	232.0 (9.134)
	<b>22</b>	68.4 (2.693)	230.1 (9.059)	294.1 (11.579)
	<b>19</b>	68.4 (2.693)	227.6 (8.961)	289.1 (11.382)
	<b>16</b>	68.4 (2.693)	225.1 (8.862)	284.1 (11.185)
	<b>14</b>	68.4 (2.693)	223.0 (8.780)	279.9 (11.020)
	<b>11</b>	68.4 (2.693)	220.5 (8.681)	274.9 (10.823)
	<b>8</b>	68.4 (2.693)	218.4 (8.598)	270.8 (10.661)
	<b>6</b>	68.4 (2.693)	216.3 (8.516)	266.6 (10.496)
	<b>4</b>	68.4 (2.693)	214.7 (8.453)	263.3 (10.366)

		mm (inch)		
		A	B	C
<b>3SP ...29 + 2SP</b>	<b>26</b>	66.9 (2.634)	230.0 (9.055)	296.9 (11.689)
	<b>22</b>	66.9 (2.634)	227.1 (8.941)	291.1 (11.461)
	<b>19</b>	66.9 (2.634)	224.6 (8.843)	286.1 (11.264)
	<b>16</b>	66.9 (2.634)	222.1 (8.744)	281.1 (11.067)
	<b>14</b>	66.9 (2.634)	220.0 (8.661)	276.9 (10.902)
	<b>11</b>	66.9 (2.634)	217.5 (8.563)	271.9 (10.705)
	<b>8</b>	66.9 (2.634)	215.4 (8.480)	267.8 (10.543)
	<b>6</b>	66.9 (2.634)	213.3 (8.398)	263.6 (10.378)
	<b>4</b>	66.9 (2.634)	201.7 (7.941)	260.3 (10.248)
	<b>3SP ...22 + 2SP</b>	<b>26</b>	63.9 (2.516)	224.0 (8.819)
<b>22</b>		63.9 (2.516)	221.1 (8.705)	285.1 (11.224)
<b>19</b>		63.9 (2.516)	218.6 (8.606)	280.1 (11.028)
<b>16</b>		63.9 (2.516)	216.1 (8.511)	275.1 (10.831)
<b>14</b>		63.9 (2.516)	214.0 (8.425)	270.9 (10.665)
<b>11</b>		63.9 (2.516)	211.5 (8.327)	265.9 (10.469)
<b>8</b>		63.9 (2.516)	209.4 (8.244)	261.8 (10.307)
<b>6</b>		63.9 (2.516)	207.3 (8.161)	257.6 (10.142)
<b>4</b>		63.9 (2.516)	205.7 (8.105)	254.3 (10.012)
<b>3SP ...19 + 2SP</b>		<b>26</b>	62.4 (2.457)	221.0 (8.701)
	<b>22</b>	62.4 (2.457)	218.1 (8.587)	282.1 (11.106)
	<b>19</b>	62.4 (2.457)	215.6 (8.488)	277.1 (10.909)
	<b>16</b>	62.4 (2.457)	213.1 (8.390)	272.1 (10.713)
	<b>14</b>	62.4 (2.457)	211.0 (8.307)	267.9 (10.547)
	<b>11</b>	62.4 (2.457)	208.5 (8.209)	262.9 (10.350)
	<b>8</b>	62.4 (2.457)	206.4 (8.126)	258.8 (10.189)
	<b>6</b>	62.4 (2.457)	204.3 (8.043)	254.6 (10.024)
	<b>4</b>	62.4 (2.457)	202.7 (7.980)	251.3 (9.894)

## GROUP 3 + GROUP 3



kit order code **01093300000000**



kit order code **01093300000000**

mm (inch)

		A	B	C			
3SP 62	+ 3 SP ..	62	80.4 (3.165)	283.7 (11.169)	367.6 (14.472)		
		52	80.4 (3.165)	279.7 (11.012)	359.6 (14.157)		
		44	80.4 (3.165)	276.2 (10.874)	352.6 (13.882)		
		36	80.4 (3.165)	273.2 (10.756)	346.6 (13.646)		
		33	80.4 (3.165)	272.7 (10.736)	343.6 (13.528)		
		29	80.4 (3.165)	270.2 (10.638)	340.6 (13.409)		
		22	80.4 (3.165)	267.2 (10.520)	334.6 (13.173)		
		19	80.4 (3.165)	265.7 (10.461)	331.6 (13.055)		
		3SP 52	+ 3 SP ..	52	76.4 (3.008)	271.7 (10.697)	351.6 (13.843)
				44	76.4 (3.008)	268.2 (10.559)	344.6 (13.567)
36	76.4 (3.008)			265.2 (10.441)	338.6 (13.331)		
33	76.4 (3.008)			263.7 (10.382)	335.6 (13.213)		
29	76.4 (3.008)			262.2 (10.323)	332.6 (13.094)		
22	76.4 (3.008)			259.2 (10.205)	326.6 (12.858)		
19	76.4 (3.008)			257.7 (10.146)	323.6 (12.740)		
3SP 44	+ 3 SP ..			44	72.9 (2.870)	261.2 (10.283)	337.6 (13.291)
		36	72.9 (2.870)	258.2 (10.165)	331.6 (13.055)		
		33	72.9 (2.870)	256.7 (10.106)	328.6 (12.937)		
		29	72.9 (2.870)	255.2 (10.047)	325.6 (12.819)		
		22	72.9 (2.870)	252.2 (9.929)	319.6 (12.583)		
		19	72.9 (2.870)	250.7 (9.870)	316.6 (12.465)		

kit order code **01093300000000**

mm (inch)

		A	B	C			
3SP 36	+ 3 SP ..	36	69.9 (2.752)	252.2 (9.929)	325.6 (12.819)		
		33	69.9 (2.752)	250.7 (9.870)	322.6 (12.701)		
		29	69.9 (2.752)	249.2 (9.811)	319.6 (12.583)		
		22	69.9 (2.752)	246.2 (9.693)	313.6 (12.346)		
		19	69.9 (2.752)	244.7 (9.634)	310.6 (12.228)		
		3SP 33	+ 3 SP ..	33	68.4 (2.693)	247.7 (9.752)	319.6 (12.583)
29	68.4 (2.693)			246.2 (9.693)	316.6 (12.465)		
22	68.4 (2.693)			243.2 (9.575)	310.6 (12.228)		
19	68.4 (2.693)			241.7 (9.516)	307.6 (12.110)		
3SP 29	+ 3 SP ..			29	66.9 (2.634)	243.2 (9.575)	313.6 (12.346)
				22	66.9 (2.634)	240.2 (9.457)	307.6 (12.110)
		19	66.9 (2.634)	238.7 (9.398)	304.6 (11.992)		
		3SP 22	+ 3 SP ..	22	63.9 (2.516)	234.2 (9.220)	301.6 (11.874)
19	63.9 (2.516)			232.7 (9.161)	298.6 (11.756)		
3SP 19	+ 3 SP ..			19	62.4 (2.457)	229.7 (9.043)	295.6 (11.645)