

## HYDRAULIC MOTORS

# FLOWFIT HYDRAULIC MOTORS

PRODUCT	PAGE
HYDRAULIC MOTOR SERIES FFPM	192
HYDRAULIC MOTOR SERIES FFPM	193
HYDRAULIC MOTOR SERIES FFPRM	195
HYDRAULIC MOTOR SERIES FFPMH	197
HYDRAULIC MOTOR SERIES FFPM	198
HYDRAULIC MOTOR SERIES FFPM	201
HYDRAULIC MOTOR SERIES FFPM	202
HYDRAULIC MOTOR SERIES FFPM	204



**FROM  
ONLY  
£74.88  
+VAT**



**FROM  
ONLY  
£89.80  
+VAT**



**FROM  
ONLY  
£172.65  
+VAT**



**QUALITY PRODUCTS**

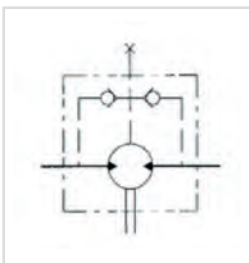


**FREE ADVICE**

*If the part  
number needed  
is not listed  
please ask  
the Flowfit  
Sales Team*

# HYDRAULIC MOTOR SERIES FFPMM

www.flowfitonline.com  
TECH. DATA SHEET  
**FHM01**



The FFPMM hydraulic series motor provides high output torque from a very small package. All FFPMM hydraulic motors have built in check valves ensuring pressure on the shaft seal does not exceed the return line pressure. FFPMM hydraulic motors can replace Sauer Danfoss OMM motors.

The anti-rust coating colour is phosphatizing coat. Phosphate coating is used for increased corrosion protection, and improved friction properties. This is applied to threaded parts and top coated with oil to add anti-galling and rust inhibiting characteristics. Its Colour is, dark grey / black.

- Spool valve type with gerotor
- With or without flange
- Optimized for small spaces
- Internal check valve
- Side and rear ports
- Usage without drain line possible

TYPE	FFPMM					
	8	12.5	20	32	40	50
Displacement [cm <sup>3</sup> /REV]	8.2	12.9	19.9	31.6	39.8	50.3
Max. Speed [RPM]	Cont.	1950	1550	1000	630	400
	Int.(1)	2450	1940	1250	800	630
Max. Torque [daNm]	Cont.	11	16	25	40	46
	Int.(1)	15	23	35	57	88
	Peak (2)	21	33	51	64	100
Max. Output Power [kW]	Cont.	1.8	2.4	2.4	2.4	2.2
	Int.(1)	2.6	3.2	3.2	3.2	3.2
Max. Pressure Drop [bar]	Cont	100	100	100	100	90
	Int.(1)	140	140	140	140	140
	Peak (2)	200	200	200	160	160
Max.Oil flow [l/min]	Cont	16	20	20	20	20
	Int.(1)	20	25	25	25	25
Max. Input Pressure [bar]	Cont.	175	175	175	175	175
	Int.(1)	225	225	225	225	225
Weight [kg]	1.9	2	2.1	2.2	2.3	2.4

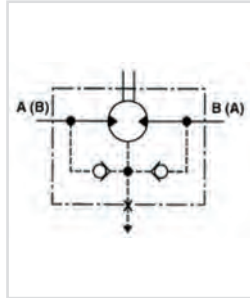
PART NUMBER	DESCRIPTION	NETT. PRICE	
		£ STERLING	€ EUROS
FFPMM12.5C	Hydraulic motor FFPMM12.5C, 12,9 ccm/REV, shaft 16mm, G 3/8 inch, rear ports	£68.82	€ 92.91
FFPMM20C	Hydraulic motor FFPMM20C, 19,9 ccm/REV, shaft 16mm, G3/8 inch, rear ports	£68.82	€ 92.91
FFPMM32C	Hydraulic motor FFPMM32C, 31,6 ccm/REV, shaft 16mm, G3/8 inch, rear ports	£70.37	€ 95.01
FFPMM32SH	Hydraulic motor FFPMM32SH, 31,6 ccm/REV, splined shaft 16,5mm 14 T., G3/8 inch, rear ports	£71.91	€ 97.07
FFPMM40C	Hydraulic motor FFPMM40C, 39,8 ccm/REV, shaft 16mm, G 3/8 inch, rear ports	£71.91	€ 97.07
FFPMM40SH	Hydraulic motor FFPMM40SH, 39,8 ccm/REV, splined shaft 16,5mm 14 T., G3/8 inch, rear ports	£73.44	€ 99.14
FFPMM50C	Hydraulic motor FFPMM50C, 50,3 ccm/REV, shaft 16mm, G 3/8 inch, rear ports	£73.44	€ 99.14
FFPMM8C	Hydraulic motor FFPMM8C, 8,2 ccm/REV, shaft 16mm, G 3/8 inch, rear ports	£69.15	€ 93.36
FFPMMFS12.5C	Hydraulic motor FFPMMFS12.5C, 12,9 ccm/REV, shaft 16mm, G 3/8 inch, oval mount, side ports	£79.56	€ 107.41
FFPMMFS20C	Hydraulic motor FFPMMFS20C, 19,9 ccm/REV, shaft 16mm, G 3/8 inch, oval mount, side ports	£79.56	€ 107.41
FFPMMFS32C	Hydraulic motor FFPMMFS32C, 31,6 ccm/REV, shaft 16mm, G 3/8 inch, oval mount, side ports	£81.25	€ 109.68
FFPMMFS8C	Hydraulic motor FFPMMFS8C, 8,2 ccm/REV, shaft 16mm, G 3/8 inch, oval mount, side ports	£81.25	€ 109.68
FFPMMS12.5C	Hydraulic motor FFPMMS12.5C, 12,9 ccm/REV, shaft 16mm, G 3/8 inch, side ports	£77.06	€ 104.03
FFPMMS20C	Hydraulic motor FFPMMS20C, 19,9 ccm/REV, shaft 16mm, G 3/8 inch, side ports	£77.06	€ 104.03
FFPMMS32C	Hydraulic motor FFPMMS32C, 31,6 ccm/REV, shaft 16mm, G 3/8 inch, side ports	£78.75	€ 106.33
FFPMMS40C	Hydraulic motor FFPMMS40C, 39,8 ccm/REV, shaft 16mm, G 3/8 inch, side ports	£80.44	€ 108.58
FFPMMS50C	Hydraulic motor FFPMMS50C, 50,3 ccm/REV, shaft 16mm, G 3/8 inch, side ports	£82.10	€ 110.84
FFPMMS8C	Hydraulic motor FFPMMS8C, 8,2 ccm/REV, shaft 16mm, G 3/8 inch, side ports	£77.06	€ 104.03

(1) Intermittent operation rating applies to 6 sec. of every minute

(2) Peak loading rating applies to 0,6 sec of every minute

# HYDRAULIC MOTOR SERIES FFPM

www.flowfitonline.com  
TECH. DATA SHEET  
**FHM02**



The FFPM series hydraulic motor comes in a small envelope size and provides an economical solution when high torque is required. Industry standard housings and shafts enables the FFPM hydraulic motor to interchange with most makes of motor. Flowfit fully interchanges with the Sauer Danfoss OMP range of hydraulic motors and other well known brands. High pressure shaft seal offers superior seal life and performance. See the range below.

The anti-rust coating colour is phosphating coat. Phosphate coating is used for increased corrosion protection, and improved friction properties. This is applied to threaded parts and top coated with oil to add anti-galling and rust inhibiting characteristics. Its Colour is, dark grey / black.

- Spool valve type.
- Compact design
- Optimized for small spaces
- Internal check valve
- Usage without drain line possible
- High pressure seal is standard

TYPE		FFPM	FFPM	FFPM	FFPM	FFPM	FFPM(1)	FFPM(2)	FFPM(1)	FFPM(2)	FFPM(1)	FFPM(2)	FFPM(1)	FFPM(2)
		50	80	100	125	160	200	200	250	250	315	315	400	400
Displacement [cm <sup>3</sup> /REV]		51.7	77.7	96.2	117.2	155.5	189.9	189.9	231	231	311.7	311.7	386.2	386.2
Max. Speed [RPM]	Cont	1180	760	600	485	380	302	302	240	240	190	190	150	150
	Int.(3)	1380	940	750	600	475	380	380	302	302	235	235	190	190
Max. Torque [daNm]	Cont.	9.3	14.9	19	23.4	31	36.4	35.9	45.2	35.1	46.3	34.2	48.2	34.8
	Int.(3)	12	19	23	29	37	45.2	43.5	58.9	46.8	54.3	49.2	55.5	45.4
	Peak (4)	14	21.9	26.5	36.2	42.6	54.5	54.5	64.2	58.5	70.5	68.4	78.7	68.8.
Max. Output Power [kW]	Cont.	10.2	10.1	10.3	10	10	10	9.6	9.4	7.4	7.5	5.6	6.3	4.6
	Int.(3)	12.3	12.3	12.5	12	12	12	12	12	12	9	9	7.8	7.8
Max. Pressure Drop [bar]	Cont	140	140	140	140	140	140	135	135	105	115	80	90	65
	Int.(3)	175	175	175	175	175	175	160	175	140	135	115	110	90
	Peak (4)	210	210	210	210	210	210	210	210	175	175	160	160	140
Max. Oil flow [l/min]	Cont	50	60	60	60	60	60	60	60	60	60	60	60	60
	Int.(3)	60	75	75	75	75	75	75	75	75	75	75	75	75
Max. Input Pressure [bar]	Cont.	160	160	160	160	160	160	160	160	160	160	160	160	160
	Int.(3)	175	175	175	175	175	175	175	175	175	175	175	175	175
	Peak (4)	210	210	210	210	210	210	210	210	210	210	210	210	210
Weight [kg]		5.6	5.7	5.9	6.0	6.2	6.4	6.4	6.6	6.6	6.9	6.9	7.4	7.4

(1) FFPM Motor with CB, SH, K and SB shafts

(2) FFPM Motor with C, CO and S shafts

(3) Intermittend operation rating applies to 6 sec. of every minute

(4) Peak load rating applies to 0,6 sec of every minute

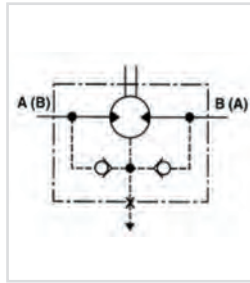
PART NUMBER	DESCRIPTION	NETT. PRICE	
		£ STERLING	€ EUROS
FFPM100CB	Hydraulic motor FFPM100CB, 98,6 ccm/REV, shaft 32mm, 2-hole SAE A, G 1/2 inch, HPS	£82.06	€ 110.78
FFPM100CD	Hydraulic motor FFPM100CD, 98,6 ccm/REV, shaft 25mm, 2-hole SAE A, G 1/2 inch, HPS	£78.11	€ 105.45
FFPM100COD	Hydraulic motor FFPM100COD, 98,6 ccm/REV, shaft 25,4mm, 2-hole SAE A, G 1/2 inch, HPS	£85.55	€ 115.50
FFPM100SHD	Hydraulic motor FFPM100SHD, 98,6 ccm/REV, splined shaft SAE 6B, 2-hole SAE A, G 1/2 inch, HPS	£85.55	€ 115.50
FFPM125CB	Hydraulic motor FFPM125CB, 123,5 ccm/REV, shaft 32mm, 2-hole SAE A, G 1/2 inch	£83.86	€ 113.21
FFPM125CD	Hydraulic motor FFPM125CD, 123,5 ccm/REV, shaft 25mm, 2-hole SAE A, G 1/2 inch, HPS	£79.75	€ 107.65
FFPM125COD	Hydraulic motor FFPM125CD, 123,5 ccm/REV, shaft 25,4mm, 2-hole SAE A, G 1/2 inch, HPS	£87.34	€ 117.91
FFPM125SHD	Hydraulic motor FFPM125SHD, 123,5 ccm/REV, splined shaft SAE 6B, 2-hole SAE A, G 1/2 inch	£87.34	€ 117.91
FFPM160CB	Hydraulic motor FFPM160CB, 158,6 ccm/REV, shaft 32mm, 2-hole SAE A, G 1/2 inch, HPS	£86.66	€ 117.00
FFPM160CD	Hydraulic motor FFPM160CD, 158,6 ccm/REV, shaft 25mm, 2-hole SAE A, G 1/2 inch, HPS	£82.31	€ 111.11
FFPM160COD	Hydraulic motor FFPM160CD, 158,6 ccm/REV, shaft 25,4mm, 2-hole SAE A, G 1/2 inch, HPS	£90.14	€ 121.69
FFPM160SHD	Hydraulic motor FFPM160SHD, 158,6 ccm/REV, splined SAE 6B, 2-hole SAE A, G 1/2 inch, G1/2"	£90.14	€ 121.69
FFPM200CB	Hydraulic motor FFPM200CB, 197,9 ccm/REV, shaft 32mm, 2-hole SAE A, G 1/2 inch, HPS	£89.29	€ 120.54

Continued on next page

PART NUMBER	DESCRIPTION	NETT. PRICE	
		£ STERLING	€ EUROS
FFPM200CD	Hydraulic motor FFPM200CD, 197,9 ccm/REV, shaft 25mm, 2-hole SAE A, G 1/2 inch, HPS	£85.20	€ 115.02
FFPM200COD	Hydraulic motor FFPM200COD, 197,9 ccm/REV, shaft 25,4mm, 2-hole SAE A, G 1/2 inch, HPS	£93.30	€ 125.96
FFPM200SHD	Hydraulic motor FFPM200SHD, 197,9 ccm/REV, splined shaft SAE 6B, 2-hole SAE A, G 1/2 inch, HPS	£93.30	€ 125.96
FFPM250CB	Hydraulic motor FFPM250CB, 247,5 ccm/REV, shaft 32mm, 2-hole SAE A, G 1/2 inch, G 1/2"	£92.08	€ 124.31
FFPM250CD	Hydraulic motor FFPM250CD, 247,5 ccm/REV, shaft 25mm, 2-hole SAE A, G 1/2 inch, HPS	£87.26	€ 117.81
FFPM250COD	Hydraulic motor FFPM250COD, 247,5 ccm/REV, shaft 25,4mm, 2-hole SAE A, G 1/2 inch, HPS	£95.57	€ 129.03
FFPM250SHD	Hydraulic motor FFPM250SHD, 247,5 ccm/REV, splined shaft SAE 6B, 2-hole SAE A, G 1/2 inch	£95.57	€ 129.03
FFPM315CB	Hydraulic motor FFPM315CB, 316,5 ccm/REV, shaft 32mm, 2-hole SAE A, G 1/2 inch, HPS	£94.05	€ 126.95
FFPM315CD	Hydraulic motor FFPM315CD, 316,5 ccm/REV, shaft 25mm, 2-hole SAE A, G 1/2 inch, HPS	£89.05	€ 120.20
FFPM315COD	Hydraulic motor FFPM315COD, 316,5 ccm/REV, shaft 25,4mm, 2-hole SAE A, G 1/2 inch, HPS	£97.52	€ 131.66
FFPM315SHD	Hydraulic motor FFPM315SHD, 316,5 ccm/REV, splined shaft SAE 6B, 2-hole SAE A, G 1/2 inch, HPS	£97.52	€ 131.66
FFPM400CB	Hydraulic motor FFPM400CB, 396,5ccm/REV, shaft 32mm, 2-hole SAE A, G 1/2 inch, HPS	£96.94	€ 130.87
FFPM400CD	Hydraulic motor FFPM400CD, 396,5 ccm/REV, shaft 25mm, 2-hole SAE A, G 1/2 inch, HPS	£91.69	€ 123.79
FFPM400COD	Hydraulic motor FFPM400COD, 396,5 ccm/REV, shaft 25,4mm, 2-hole SAE A, G 1/2 inch, HPS	£100.43	€ 135.57
FFPM400SHD	Hydraulic motor FFPM400SHD, 396,5 ccm/REV, splined shaft SAE 6B, 2-hole SAE A, G 1/2 inch, HPS	£100.43	€ 135.57
FFPM50CB	Hydraulic motor FFPM50CB, 51,2 ccm/REV, shaft 32mm, 2-hole SAE A, G 1/2 inch	£78.41	€ 105.85
FFPM50CD	Hydraulic motor FFPM50CD, 51,2 ccm/REV, shaft 25mm, 2-hole SAE A, G 1/2 inch, HPS	£74.77	€ 100.94
FFPM50COD	Hydraulic motor FFPM50COD, 51,2 ccm/REV, shaft 25,4mm, 2-hole SAE A, G 1/2 inch, HPS	£81.89	€ 110.55
FFPM50SHD	Hydraulic motor FFPM50SHD, 51,2 ccm/REV, splined shaft SAE 6B, 2-hole SAE A, G 1/2 inch, HPS	£81.89	€ 110.55
FFPM80CB	Hydraulic motor FFPM80CB, 78,8 ccm/REV, shaft 32mm, 2-hole SAE A, G 1/2 inch	£80.19	€ 108.25
FFPM80CD	Hydraulic motor FFPM80CD, 78,8 ccm/REV, shaft 25mm, 2-hole SAE A, G 1/2 inch, HPS	£76.41	€ 103.15
FFPM80COD	Hydraulic motor FFPM80COD, 78,8 ccm/REV, shaft 25,4mm, 2-hole SAE A, G 1/2 inch, HPS	£83.69	€ 112.98
FFPM80SHD	Hydraulic motor FFPM80SHD, 78,8 ccm/REV, splined shaft SAE 6B, 2-hole SAE A, G 1/2 inch, HPS	£83.69	€ 112.98
FFPMF100CB	Hydraulic motor FFPMF100CB, 396,5ccm/REV, shaft 32mm, 4-hole SAE A, G 1/2 inch, HPS	£91.45	€ 123.47
FFPMF100CD	Hydraulic motor FFPMF100CD, 98,6 ccm/REV, shaft 25mm, 4-hole SAE A, G 1/2 inch, HPS	£95.26	€ 128.60
FFPMF125CB	Hydraulic motor FFPMF125CB, 123,5 ccm/REV, shaft 32mm, 4-hole SAE, G 1/2 inch	£93.40	€ 126.09
FFPMF160CB	Hydraulic motor FFPMF160CB, 158,6 ccm/REV, shaft 32mm, 4-hole SAE A, G 1/2 inch, HPS	£96.44	€ 130.20
FFPMF200CB	Hydraulic motor FFPMF200CB, 197,9 ccm/REV, shaft 32mm, 4-hole SAE A, G 1/2 inch, HPS	£99.33	€ 134.09
FFPMF250CB	Hydraulic motor FFPMF250CB, 247,5 ccm/REV, shaft 32mm, 4-hole SAE A, G 1/2 inch, HPS	£102.35	€ 138.18
FFPMF315CB	Hydraulic motor FFPMF315CB, 316,8ccm/REV, shaft 32mm, 4-hole SAE A, G 1/2 inch, HPS	£104.48	€ 141.04
FFPMF400CB	Hydraulic motor FFPMF400CB, 396,5ccm/REV, shaft 32mm, 4-hole SAE A, G 1/2 inch, HPS	£107.63	€ 145.29
FFPMF50CB	Hydraulic motor FFPMF50CB, 51,2ccm/REV, shaft 32mm, 4-hole SAE A, G 1/2 inch, HPS	£87.48	€ 118.10
FFPMF80CB	Hydraulic motor FFPMF80CB, 78,8ccm/REV, shaft 32mm, 4-hole SAE A, G 1/2 inch, HPS	£89.42	€ 120.72
FFPMN100CD	Hydraulic motor FFPMN100CD, 98,6 ccm/REV, shaft 25mm, 2-hole SAE A, G 1/2 inch, HPS needle bearing	£92.50	€ 124.88
FFPMN125CD	Hydraulic motor FFPMN125CD, 123,5 ccm/REV, shaft 25mm, 2-hole SAE A, G 1/2 inch, HPS, needle bearing	£94.31	€ 127.31
FFPMN160CD	Hydraulic motor FFPMN160CD, 158,6 ccm/REV, shaft 25mm, 2-hole SAE A, G 1/2 inch, HPS, needle bearing	£97.10	€ 131.09
FFPMN160COD	Hydraulic motor FFPMN160CD, 158,6 ccm/REV, shaft 25,4mm, 2-hole SAE A, G 1/2 inch, HPS, needle bearing	£97.09	€ 131.08
FFPMN200CD	Hydraulic motor FFPMN200CD, 197,9 ccm/REV, shaft 25mm, 2-hole SAE A, G 1/2 inch, HPS, needle bearing	£99.75	€ 134.65
FFPMN250CD	Hydraulic motor FFPMN250CD, 247,5 ccm/REV, shaft 25mm, 2-hole SAE A, G 1/2 inch, HPS, needle bearing	£102.54	€ 138.42
FFPMN315CD	Hydraulic motor FFPMN315CD, 316,5 ccm/REV, shaft 25mm, 2-hole SAE A, G 1/2 inch, HPS, needle bearing	£108.21	€ 146.08
FFPMN400CD	Hydraulic motor FFPMN400CD, 396,5 ccm/REV, shaft 25mm, 2-hole SAE A, G 1/2 inch, HPS needle bearing	£107.40	€ 144.98
FFPMN50CD	Hydraulic motor FFPMN50CD, 51,2 ccm/REV, shaft 25mm, 2-hole SAE A, G 1/2 inch, HPS, needle bearing	£88.85	€ 119.94
FFPMN80CD	Hydraulic motor FFPMN80CD, 78,8 ccm/REV, shaft 25mm, 2-hole SAE A, G 1/2 inch, HPS, needle bearing	£90.66	€ 122.37
FFPMP200CD	Hydraulic motor FFPMP200CD, 197,9 ccm/REV, shaft 25mm, 2-hole SAE A, G 1/2 inch, protection cap, HPS	£109.93	€ 148.40
FFPMP250CD	Hydraulic motor FFPMP250CD, 247,5 ccm/REV, shaft 25mm, 2-hole SAE A, G 1/2 inch, protection cap, HPS	£112.96	€ 152.50
FFPMQ100HD	Hydraulic motor FFPMQ100HD, 98,6 ccm/REV, shaft 25,4mm cross hole, 4-hole flange, HPS	£96.00	€ 129.61
FFPMQ125CD	Hydraulic motor FFPMQ125CD, 123,5 ccm/REV, shaft 25mm, 4-hole Square Flange, G 1/2 inch, HPS	£97.96	€ 132.24
FFPMQ125HD	Hydraulic motor FFPMQ125HD, 123,5 ccm/REV, shaft 25,4mm cross hole, 4-hole flange, HPS	£97.96	€ 132.24
FFPMQ160CD	Hydraulic motor FFPMQ160CD, 158,6 ccm/REV, shaft 25mm, 4-hole Square Flange, G 1/2 inch, HPS	£100.99	€ 136.34
FFPMQ50CD	Hydraulic motor FFPMQ50CD, 51,2 ccm/REV, shaft 25mm, 4-hole square flange, G 1/2 inch, HPS	£92.03	€ 124.23
FFPMQ80CD	Hydraulic motor FFPMQ80CD, 78,8 ccm/REV, shaft 25mm, 4-hole flange, HPS,	£93.99	€ 126.90
FFPMQ80COD	Hydraulic motor FFPMQ80COD, 78,8 ccm/REV, shaft 25,4mm, 4-hole flange, HPS,	£93.99	€ 126.90
FFPMW160CD	Hydraulic motor FFPMW160CD, 158,6 ccm/REV, shaft 25mm, Wheelflange, HPS, G 1/2"	£108.86	€ 146.97
FFPMW200CD	Hydraulic motor FFPMW200CD, 197,9 ccm/REV, shaft 25mm, Wheelflange, HPS, G 1/2"	£111.75	€ 150.85
FFPMW250CD	Hydraulic motor FFPMW250CD, 247,5 ccm/REV, shaft 25mm, Wheelflange, HPS, G 1/2"	£114.79	€ 154.97
FFPMW315CD	Hydraulic motor FFPMW315CD, 316,5 ccm/REV, shaft 25mm, Wheelflange, HPS, G 1/2"	£116.90	€ 157.82
FFPMW400CD	Hydraulic motor FFPMW400CD, 396,5 ccm/REV, shaft 25mm, Wheelflange, HPS, G 1/2"	£120.06	€ 162.09
FFPMW80CD	Hydraulic motor FFPMW80CD, 78,8 ccm/REV, shaft 25mm, Wheelflange, HPS, G 1/2"	£101.87	€ 137.52

# HYDRAULIC MOTOR SERIES FFPRM

www.flowfitonline.com  
TECH. DATA SHEET  
**FHM03**



The FFPRM series hydraulic motor provides high performance with high efficiency due to low rolling friction drive elements. Industry standard housings and shafts enables the FFPRM hydraulic motor to interchange with most makes of motor. Flowfit fully interchanges with the Sauer Danfoss OMR range. High pressure shaft seal offers superior seal life and performance.

The anti-rust coating colour is phosphatizing coat. Phosphate coating is used for increased corrosion protection, and improved friction properties. This is applied to threaded parts and top coated with oil to add anti-galling and rust inhibiting characteristics. Its Colour is, dark grey / black.

- Spool valve type with geroler
- Low starting torque and high efficiency
- Optimized for small spaces
- Internal check valve
- Usage without drain line possible
- High pressure seal is standard

TYPE		FFPRM	FFPRM	FFPRM	FFPRM	FFPRM	FFPRM(1)	FFPRM(2)	FFPRM(1)	FFPRM(2)	FFPRM(1)	FFPRM(2)	FFPRM(1)	FFPRM(2)
		50	80	100	125	160	200	200	250	250	315	315	400	400
Displacement [cm <sup>3</sup> /REV]		51.3	80.6	100.8	124.9	157.2	199.2	199.2	252	252	314.5	314.5	396.5	396.5
Max. Speed [RPM]	Cont.	755	750	600	475	375	300	300	240	240	190	190	150	150
	Int.(3)	970	940	750	600	470	375	375	300	300	240	240	190	190
Max. Torque [daNm]	Cont.	10	19.6	24.2	27.1	38.9	45	38.5	53.8	38.8	53.1	38.5	58.5	35.5
	Int.(3)	12.6	22.1	28.1	33.9	42.8	50	46	60.8	57.9	63	57	68.7	59.8
	Peak (4)	16.8	27	32.1	36.8	45.8	56	56	70.6	65.5	83	83	86.8	71.3
"Max. Output Power [kW]"	Cont.	6.9	12.6	12	12.4	11.4	11	9	10.5	6.4	9	6	7.7	4.7
	Int.(3)	8.3	15	15	14.5	12.6	13	11.5	12	10.5	11	9.6	10.6	8.7
Max. Pressure Drop [bar]	Cont.	140	160	160	160	160	160	135	150	105	135	85	110	65
	Int.(3)	175	180	180	180	180	180	175	175	160	150	130	140	75
	Peak (4)	210	210	210	210	210	210	210	210	200	175	175	175	175
Max. Oil flow [l/min]	Cont.	40	60	60	60	60	60	60	60	60	60	60	60	60
	Int.(3)	50	75	75	75	75	75	75	75	75	75	75	75	75
Max. Input Pressure [bar]	Cont.	175	175	175	175	175	175	175	175	175	175	175	175	175
	Int.(3)	200	200	200	200	200	200	200	200	200	200	200	200	200
	Peak (4)	225	225	225	225	225	225	225	225	225	225	225	225	225
Weight [kg]		6.7	6.9	6.9	7.2	7.5	8.1	8.1	8.5	9.5	9.1	9.1	9.5	9.5

(1) FFPRM Motor with CB, SH, K and SB shafts

(3) Intermittend operation rating applies to 6 sec. of every minute

(2) FFPRM Motor with C, CO and S shafts

(4) Peak load rating applies to 0,6 sec of every minute

PART NUMBER	DESCRIPTION	NETT. PRICE	
		£ STERLING	€ EUROS
FFPRM100CB	Hydraulic motor FFPRM100CB, 100,8 ccm/REV, shaft 32mm, 2-hole SAE A, HPS, G 1/2 inch	£103.74	€ 140.07
FFPRM100CD	Hydraulic motor FFPRM100CD, 100,8 ccm/REV, shaft 25mm, 2-hole SAE A, HPS, G 1/2 inch	£98.01	€ 132.31
FFPRM100COD	Hydraulic motor FFPRM100COD, 99,0 ccm/REV, shaft 25,4mm, 2-hole SAE A, HPS	£107.34	€ 144.91
FFPRM100SHD	Hydraulic motor FFPRM100SHD, 100,8 ccm/REV, splined shaft SAE6B, 2-hole SAE A, HPS, G 1/2 inch	£107.34	€ 144.91
FFPRM125CB	Hydraulic motor FFPRM125CB, 125,1 ccm/REV, shaft 32mm, 2-hole SAE A, HPS, G 1/2 inch	£105.73	€ 142.74
FFPRM125CD	Hydraulic motor FFPRM125CD, 125,1 ccm/REV, shaft 25mm, 2-hole SAE A, HPS, G 1/2 inch	£99.74	€ 134.64
FFPRM125COD	Hydraulic motor FFPRM125COD, 125,1 ccm/REV, shaft 25,4mm, 2-hole SAE A, HPS, G 1/2 inch	£109.23	€ 147.45
FFPRM125SHD	Hydraulic motor FFPRM125SHD, 125,1 ccm/REV, splined shaft SAE6B, 2-hole SAE A, HPS, G 1/2 inch	£109.23	€ 147.45
FFPRM160CB	Hydraulic motor FFPRM160CB, 159,4 ccm/REV, shaft 32mm, 2-hole SAE A, HPS, G 1/2 inch	£108.69	€ 146.74

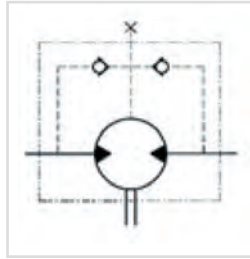
Continued on next page



PART NUMBER	DESCRIPTION	NETT. PRICE	
		£ STERLING	€ EUROS
FFPRM160CD	Hydraulic motor FFPRM160CD, 159,4 ccm/REV, shaft 25mm, 2-hole SAE A, HPS, G 1/2 inch	£102.43	€ 138.27
FFPRM160COD	Hydraulic motor FFPRM160COD, 159,4 ccm/REV, shaft 25,4mm, 2-hole SAE A, HPS, G 1/2 inch	£112.18	€ 151.44
FFPRM160SHD	Hydraulic motor FFPRM160SHD, 159,4 ccm/REV, splined shaft SAE 6B, 2-hole SAE A, HPS, G 1/2 inch	£112.18	€ 151.44
FFPRM200C/C	Hydraulic motor FFPRM200C/C, 199,6 ccm/REV, double shafts 25mm, 2-hole SAE A, G 1/2 inch	£159.25	€ 214.98
FFPRM200CB	Hydraulic motor FFPRM200CB, 199,6 ccm/REV, shaft 32mm, 2-hole SAE A, HPS, G 1/2 inch	£112.68	€ 152.11
FFPRM200CD	Hydraulic motor FFPRM200CD, 199,6 ccm/REV, shaft 25mm, 2-hole SAE A, HPS	£106.06	€ 143.16
FFPRM200COD	Hydraulic motor FFPRM200COD, 199,6 ccm/REV, shaft 25,4mm, 2-hole SAE A, HPS	£116.15	€ 156.81
FFPRM200SHD	Hydraulic motor FFPRM200SHD, 197,9 ccm/REV, splined shaft SAE 6B, 2-hole SAE A, HPS, G 1/2 inch	£116.15	€ 156.81
FFPRM250CB	Hydraulic motor FFPRM250CB, 249,8 ccm/REV, shaft 32mm, 2-hole SAE A, G 1/2 inch	£114.40	€ 154.45
FFPRM250CD	Hydraulic motor FFPRM250CD, 249,8 ccm/REV, shaft 25mm, 2-hole SAE A, HPS, G 1/2 inch	£109.53	€ 147.87
FFPRM250COD	Hydraulic motor FFPRM250COD, 251,1 ccm/REV, shaft 25,4mm, 2-hole SAE A, HPS	£119.97	€ 161.96
FFPRM250SHD	Hydraulic motor FFPRM250SHD, 249,8 ccm/REV, splined shaft SAE 6B, 2-hole SAE A, HPS, G 1/2 inch	£119.97	€ 161.96
FFPRM315CB	Hydraulic motor FFPRM315CB, 315,7 ccm/REV, shaft 32mm, 2-hole SAE A, HPS, G 1/2 inch	£118.41	€ 159.86
FFPRM315CD	Hydraulic motor FFPRM315CD, 315,7 ccm/REV, shaft 25mm, 2-hole SAE A, HPS, G 1/2 inch	£111.29	€ 150.24
FFPRM315COD	Hydraulic motor FFPRM315COD, 315,7 ccm/REV, shaft 25,4mm, 2-hole SAE A, HPS, G 1/2 inch	£121.89	€ 164.56
FFPRM315SHD	Hydraulic motor FFPRM315SHD, 315,7 ccm/REV, splined shaft SAE 6B, 2-hole SAE A, HPS, G 1/2 inch	£121.89	€ 164.56
FFPRM400CB	Hydraulic motor FFPRM400CB, 396,5 ccm/REV, shaft 32mm, 2-hole SAE A, HPS, G 1/2 inch	£123.64	€ 166.91
FFPRM400CD	Hydraulic motor FFPRM400CD, 396,5 ccm/REV, shaft 25mm, 2-hole SAE A, HPS, G 1/2 inch	£116.08	€ 156.71
FFPRM400COD	Hydraulic motor FFPRM400COD, 396,5 ccm/REV, shaft 25,4mm, 2-hole SAE A, HPS, G 1/2 inch	£127.14	€ 171.63
FFPRM400SHD	Hydraulic motor FFPRM400SHD, 396,5 ccm/REV, splined shaft SAE 6B, 2-hole SAE A, HPS, G 1/2 inch	£127.14	€ 171.63
FFPRM50CB	Hydraulic motor FFPRM50CB, 51,2 ccm/REV, shaft 25mm, 2-hole SAE A, G 1/2 inch	£98.36	€ 132.78
FFPRM50CD	Hydraulic motor FFPRM50CD, 51,2 ccm/REV, shaft 25mm, 2-hole SAE A, HPS, G 1/2 inch	£89.80	€ 121.23
FFPRM50COD	Hydraulic motor FFPRM50COD, 51,2 ccm/REV, shaft 25,4mm, 2-hole SAE A, HPS, G 1/2 inch	£98.36	€ 132.78
FFPRM50SHD	Hydraulic motor FFPRM50SHD, 51,2 ccm/REV, splined shaft SAE6B, 2-hole SAE A, HPS, G 1/2 inch	£98.36	€ 132.78
FFPRM80CB	Hydraulic motor FFPRM80CB, 80,5 ccm/REV, shaft 32mm, 2-hole SAE A, HPS, G 1/2 inch	£102.00	€ 137.69
FFPRM80CD	Hydraulic motor FFPRM80CD, 80,5 ccm/REV, shaft 25mm, 2-hole SAE A, HPS, G 1/2 inch	£96.31	€ 130.02
FFPRM80COD	Hydraulic motor FFPRM80COD, 80,5 ccm/REV, shaft 25,4mm (1 inch), 2-hole SAE A, G 1/2 inch	£105.48	€ 142.41
FFPRM80SHD	Hydraulic motor FFPRM80SHD, 80,5 ccm/REV, splined shaft SAE6B, 2-hole SAE A, HPS, G 1/2 inch	£105.48	€ 142.41
FFPRMF100CB	Hydraulic motor FFPRMF100CB, 100,8 ccm/REV, shaft 32mm, 4-hole SAE A, HPS, G 1/2 inch	£115.04	€ 155.31
FFPRMF125CB	Hydraulic motor FFPRMF125CB, 125,1 ccm/REV, shaft 32mm, 4-hole SAE A, HPS, G 1/2 inch	£117.18	€ 158.19
FFPRMF160CB	Hydraulic motor FFPRMF160CB, 159,4 ccm/REV, shaft 32mm, 4-hole SAE A, HPS, G 1/2 inch	£120.41	€ 162.55
FFPRMF200CB	Hydraulic motor FFPRMF200CB, 199,6 ccm/REV, shaft 32mm, 4-hole SAE A, HPS, G 1/2 inch	£124.74	€ 168.40
FFPRMF250CB	Hydraulic motor FFPRMF250CB, 249,8 ccm/REV, shaft 32mm, 4-hole SAE A, HPS, G 1/2 inch	£128.88	€ 173.99
FFPRMF250CD	Hydraulic motor FFPRMF250CD, 249,8 ccm/REV, shaft 25mm, 4-hole SAE A, HPS, G 1/2 inch	£132.68	€ 179.12
FFPRMF315CB	Hydraulic motor FFPRMF315CB, 315,7 ccm/REV, shaft 32mm, 4-hole SAE A, HPS, G 1/2 inch	£130.96	€ 176.81
FFPRMF400CB	Hydraulic motor FFPRMF400CB, 396,5 ccm/REV, shaft 32mm, 4-hole SAE A, HPS, G 1/2 inch	£136.66	€ 184.49
FFPRMF80CB	Hydraulic motor FFPRMF80CB, 80,5 ccm/REV, shaft 32mm, 4-hole SAE A, HPS, G 1/2 inch	£113.13	€ 152.72
FFPRMF80CD	Hydraulic motor FFPRMF80CD, 80,5 ccm/REV, shaft 25mm, 4-hole SAE A, HPS, G 1/2 inch	£114.66	€ 154.79
FFPRMN100CB	Hydraulic motor FFPRMN100CB, 100,8 ccm/REV, shaft 32mm, 2-hole SAE A, needle bear., G 1/2 inch	£120.33	€ 162.44
FFPRMN100CD	Hydraulic motor FFPRMN100CD, 100,8 ccm/REV, shaft 25mm, 2-hole SAE A, HPS, needle bear., G 1/2 inch	£124.12	€ 167.57
FFPRMN125CB	Hydraulic motor FFPRMN125CB, 125,1 ccm/REV, shaft 32mm, 2-hole SAE A, needle bear., G 1/2 inch	£122.50	€ 165.38
FFPRMN125CD	Hydraulic motor FFPRMN125CD, 125,1 ccm/REV, shaft 25mm, 2-hole SAE A, HPS, needle bear., G 1/2 inch	£122.50	€ 165.38
FFPRMN160CB	Hydraulic motor FFPRMN160CB, 159,4 ccm/REV, shaft 32mm, 2-hole SAE A, needle bear., G 1/2 inch	£125.70	€ 169.70
FFPRMN160CD	Hydraulic motor FFPRMN160CD, 159,4 ccm/REV, shaft 25mm, 2-hole SAE A, HPS, needle bear., G 1/2 inch	£125.70	€ 169.70
FFPRMN200CB	Hydraulic motor FFPRMN200CB, 199,6 ccm/REV, shaft 32mm, 2-hole SAE A, needle bear., G 1/2 inch	£130.04	€ 175.56
FFPRMN200CD	Hydraulic motor FFPRMN200CD, 199,6 ccm/REV, shaft 25mm, 2-hole SAE A, HPS, needle bear., G 1/2 inch	£133.82	€ 180.66
FFPRMN250CB	Hydraulic motor FFPRMN250CB, 249,8 ccm/REV, shaft 32mm, 2-hole SAE A, needle bear., G 1/2 inch	£134.19	€ 181.15
FFPRMN250CD	Hydraulic motor FFPRMN250CD, 249,8 ccm/REV, shaft 25mm, 2-hole SAE A, HPS, needle bear., G 1/2 inch	£137.96	€ 186.25
FFPRMN315CB	Hydraulic motor FFPRMN315CB, 315,7 ccm/REV, shaft 32mm, 2-hole SAE A, HPS, needle bear., G 1/2 inch	£136.29	€ 183.99
FFPRMN315CD	Hydraulic motor FFPRMN315CD, 315,7 ccm/REV, shaft 25mm, 2-hole SAE A, HPS, needle bear., G 1/2 inch	£139.27	€ 188.01
FFPRMN400CB	Hydraulic motor FFPRMN400CB, 396,5 ccm/REV, shaft 32mm, 2-hole SAE A, needle bear., G 1/2 inch	£141.97	€ 191.66
FFPRMN400CD	Hydraulic motor FFPRMN400CD, 396,5 ccm/REV, shaft 25mm, 2-hole SAE A, HPS, needle bear., G 1/2 inch	£145.76	€ 196.77
FFPRMN50CB	Hydraulic motor FFPRMN50CB, 51,2 ccm/REV, shaft 32mm, 2-hole SAE A, needle bear., G 1/2 inch	£114.48	€ 154.55
FFPRMN50CD	Hydraulic motor FFPRMN50CD, 51,2 ccm/REV, shaft 25mm, 2-hole SAE A, HPS, needle bear., G 1/2 inch	£118.26	€ 159.66
FFPRMN80CB	Hydraulic motor FFPRMN80CB, 80,5 ccm/REV, shaft 32mm, 2-hole SAE A, needle bear., G 1/2 inch	£122.23	€ 165.01
FFPRMN80CD	Hydraulic motor FFPRMN80CD, 80,5 ccm/REV, shaft 25mm, 2-hole SAE A, HPS, needle bear., G 1/2 inch	£112.21	€ 151.48
FFPRMSN50COD	Hydraulic motor FFPRMSN50COD, 51,2 ccm/REV, shaft 25,4mm, 2-hole SAE A, HPS, 7/8 UNF, NB	£118.67	€ 160.21

# HYDRAULIC MOTOR SERIES FFPMH

www.flowfitonline.com  
TECH. DATA SHEET  
**FHM04**



The FFPMH motor provides high performance and high efficiency. Disk valve type with geroler. Low starting torque and high efficiency. Optimized for small spaces. Internal check valve. Usage without drain line possible. Tapered roller bearing for high radial load.

The anti-rust coating colour is phosphatizing coat. Phosphate coating is used for increased corrosion protection, and improved friction properties. This is applied to threaded parts and top coated with oil to add anti-galling and rust inhibiting characteristics. Its Colour is, dark grey / black.

- Spool valve type with geroler
- Low starting torque and high efficiency
- Flange mount
- Internal check valve
- Other special features possible

TYPE		FFPMH	FFPMH	FFPMH	FFPMH	FFPMH
		200	250	315	400	500
Displacement [cc/REV]		203.2	255.9	316.1	406.4	489.2
Max. Speed [RPM]	Cont	366	290	236	183	155
	Int.(1)	439	348	282	220	166
Max. Torque [daNm]	Cont.	51	62.1	74	85	83
	Int.(1)	57.9	70.2	82.7	99	104
	Peak (2)	65.1	79	98	109.2	117
Max. Output Power [kW]	Cont	11.2	9.2	9.8	7.4	6.5
	Int.(1)	17	15	13	13	11
Max. Pressure Drop [bar]	Cont.	175	175	175	155	125
	Int.(1)	200	200	200	190	160
	Peak (2)	225	225	225	210	180
Max. Oil flow [l/min]	Cont	75	75	75	75	75
	Int.(1)	90	90	90	90	90
Max. Input Pressure [bar]	Cont.	200	200	200	200	200
	Int.(1)	225	225	225	225	225
	Peak (2)	250	250	250	250	250
Max. return pressure with drain line [bar]	Cont	175	175	175	175	175
	Int.(1)	200	200	200	200	200
	Peak (2)	225	225	225	225	225
Weight [kg]		10.5	11	11.5	12.3	13

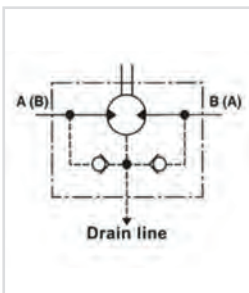
(1) Intermittent operation rating applies to 6 sec. of every minute

(2) Peak load rating applies to 0,6 sec of every minute

PART NUMBER	DESCRIPTION	NETT. PRICE	
		£ STERLING	€ EUROS
FFPMH125C	Hydraulic motor FFPMH125C, 124,9 ccm/REV, shaft 32mm, G 1/2 inch, magneto mounting flange	£158.31	€ 213.71
FFPMH125CB	Hydraulic motor FFPMH125CB, 124,9 ccm/REV, shaft 35mm, G 1/2 inch, magneto mounting flange	£158.31	€ 213.71
FFPMH160C	Hydraulic motor FFPMH160C, 157,2 ccm/REV, shaft 32mm, G 1/2 inch, magneto mounting flange	£158.31	€ 213.71
FFPMH160CB	Hydraulic motor FFPMH160CB, 157,2 ccm/REV, shaft 35mm, G 1/2 inch, magneto mounting flange	£158.31	€ 213.71
FFPMH200C	Hydraulic motor FFPMH200C, 203,2 ccm/REV, shaft 32mm, G 1/2 inch, magneto mounting flange	£160.21	€ 216.28
FFPMH200CB	Hydraulic motor FFPMH200CB, 203,2 ccm/REV, shaft 35mm, G 1/2 inch, magneto mounting flange	£160.21	€ 216.28
FFPMH250C	Hydraulic motor FFPMH250C, 255,9 ccm/REV, shaft 32mm, G 1/2 inch, magneto mounting flange	£163.87	€ 221.22
FFPMH250CB	Hydraulic motor FFPMH250CB, 255,9 ccm/REV, shaft 35mm, G 1/2 inch, magneto mounting flange	£163.87	€ 221.22
FFPMH315C	Hydraulic motor FFPMH315C, 316,1 ccm/REV, shaft 32mm, G 1/2 inch, magneto mounting flange	£169.13	€ 228.32
FFPMH315CB	Hydraulic motor FFPMH315CB, 316,1 ccm/REV, shaft 35mm, G 1/2 inch, magneto mounting flange	£169.13	€ 228.32
FFPMH315K	Hydraulic motor FFPMH315K, 316,1 ccm/REV, conic shaft 1:10, G 1/2 inch, magneto mounting flange	£172.14	€ 232.39
FFPMH400C	Hydraulic motor FFPMH400C, 406,4 ccm/REV, shaft 32mm, G 1/2 inch, magneto mounting flange	£175.73	€ 237.23
FFPMH400CB	Hydraulic motor FFPMH400CB, 406,4 ccm/REV, shaft 35mm, G 1/2 inch, magneto mounting flange	£175.73	€ 237.23
FFPMH500C	Hydraulic motor FFPMH500C, 489,2 ccm/REV, shaft 32mm, G 1/2 inch, magneto mounting flange	£186.32	€ 251.53
FFPMH500CB	Hydraulic motor FFPMH500CB, 489,2 ccm/REV, shaft 35mm, G 1/2 inch, magneto mounting flange	£0.00	€ 0.00
FFPMH630C	Hydraulic motor FFPMH630C, 612,4 ccm/REV, shaft 32mm, G 1/2 inch, magneto mounting flange	£0.00	€ 0.00
FFPMH630CB	Hydraulic motor FFPMH630CB, 612,4 ccm/REV, shaft 35mm, G 1/2 inch, magneto mounting flange	£0.00	€ 0.00

# HYDRAULIC MOTOR SERIES FFPMS

www.flowfitonline.com  
TECH. DATA SHEET  
**FHM05**



The FFPMS motor provides high performance and high efficiency.

The anti-rust coating colour is phosphating coat. Phosphate coating is used for increased corrosion protection, and improved friction properties. This is applied to threaded parts and top coated with oil to add anti-galling and rust inhibiting characteristics. Its Colour is, dark grey / black.

The Flowfit FFPMS fully interchanges with the Sauer Danfoss OMS range and all other leading brands.

- Disk valve type with geroler
- Low starting torque and high efficiency
- Optimized for small spaces
- Internal check valve
- Usage without drain line possible
- Tapered roller bearing for high radial load

TYPE	FFPMS		FFPMS		FFPMS		FFPMS		FFPMS	
	80	100	125	160	200	250	315	400		
Displacement [cm <sup>3</sup> /REV]	80.6	100.8	125	154	194	243	311	397		
Max. Speed [RPM]	Cont.	800	748	600	470	375	300	240	187	
	Int.(1)	988	900	720	560	450	360	280	230	
Max. Torque [daNm]	Cont.	19	24	31	31.6	40	45	56	58	
	Int.(1)	24	30	37	43	46.6	54	65.8	69	
	Peak (2)	26	32	40	47.2	65	69	74	85	
Max. Output Power [kW]	Cont.	15.9	18.8	19.5	15.6	15.7	14.1	14.1	10	
	Int.(1)	20.1	23.5	23.2	21.2	18.3	17	18.9	13	
Max. Pressure Drop [bar]	Cont.	175	175	175	150	140	125	120	100	
	Int.(1)	210	210	210	210	160	160	140	120	
	Peak (2)	225	225	225	225	225	200	185	140	
Max. Oil flow [l/min]	Cont.	65	75	75	75	75	75	75	75	
	Int.(1)	80	90	90	90	90	90	90	90	
Max. Input Pressure [bar]	Cont.	250	250	250	250	250	250	250	250	
	Int.(3)	300	300	300	300	300	300	300	300	
Weight [kg]	9.8	10	10.3	10.7	11.1	11.6	12.3	13.2		

(1) Intermittend operation rating applies to 6 sec. of every minute

(2) Peak load rating applies to 0,6 sec of every minute

PART NUMBER	DESCRIPTION	NETT. PRICE	
		£ STERLING	€ EUROS
FFPMS100C	Hydraulic motor FFPMS100C, 99,8 ccm/REV, shaft 32mm, 4-hole flange, G 1/2 inch	£174.59	€ 235.70
FFPMS100C25	Hydraulic motor FFPMS100C25, 99,8 ccm/REV, shaft 25mm, 4-hole flange, G 1/2 inch	£174.59	€ 235.70
FFPMS100SB	Hydraulic motor FFPMS100SB, 99,8 ccm/REV, splined 1 1/4" 12/24 D.Pitch, 30°, Z/T = 14,	£178.39	€ 240.83
FFPMS100SH	Hydraulic motor FFPMS100SH, 99,8 ccm/REV, splined 31,75 12/24 D.Pitch, 30°, Z/T = 14, G 1/2 inch	£178.39	€ 240.83
FFPMS100SL	Hydraulic motor FFPMS100SL, 99,8 ccm/REV, P.T.O. shaft 1 3/8", G 1/2 inch	£182.16	€ 245.93
FFMS125C	Hydraulic motor FFPMS125C, 125,2 ccm/REV, shaft 32mm, 4-hole flange, G 1/2 inch	£176.60	€ 238.41
FFPMS125C25	Hydraulic motor FFPMS125C25, 125,2 ccm/REV, 25mm Welle, G 1/2 inch	£176.60	€ 238.41
FFPMS125SH	Hydraulic motor FFPMS125SH, 125,2 ccm/REV, splined 31,75 12/24 D.Pitch, 30°, Z/T = 14, G 1/2 inch	£180.37	€ 243.51
FFPMS125SL	Hydraulic motor FFPMS125SL, 125,2 ccm/REV, P.T.O. shaft 1 3/8", G 1/2 inch	£184.16	€ 248.62
FFPMS160C	Hydraulic motor FFPMS160C, 159,5 ccm/REV, shaft 32mm, 4-hole flange, G 1/2 inch	£176.60	€ 238.41
FFPMS160S	Hydraulic motor FFPMS160SH, 159,5 ccm/REV, splined SAE 6B, G 1/2 inch	£178.70	€ 241.24
FFPMS160SH	Hydraulic motor FFPMS160SH, 159,5 ccm/REV, splined 31,75 12/24 D.Pitch, 30°, Z/T = 14, G 1/2 inch	£182.48	€ 246.34
FFPMS160SL	Hydraulic motor FFPMS160SL, 159,5 ccm/REV, P.T.O. shaft 1 3/8", G 1/2 inch	£186.26	€ 251.45
FFPMS200C	Hydraulic motor FFPMS200C, 200 ccm/REV, shaft 32mm, 4-hole flange, G 1/2 inch	£180.86	€ 244.17

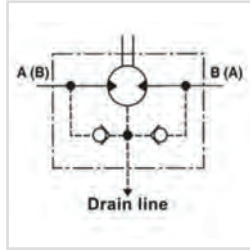


PART NUMBER	DESCRIPTION	NETT. PRICE	
		£ STERLING	€ EUROS
FFPMS200C25	Hydraulic motor FFPMS200C25, 99,8 ccm/REV, shaft 25mm, 4-hole flange, G 1/2 inch	£180.86	€ 244.17
FFPMS200S	Hydraulic motor FFPMS200S, 200,0 ccm/REV, splined SAE 6B, G 1/2 inch	£180.86	€ 244.17
FFPMS200SH	Hydraulic motor FFPMS200SH, 200,0 ccm/REV, splined 31,75, 4-hole flange, G 1/2 inch	£183.58	€ 247.84
FFPMS200SL	Hydraulic motor FFPMS200SL, 200,0 ccm/REV, P.T.O. shaft 1 3/8", G 1/2 inch"	£183.58	€ 247.84
FFPMS250C	Hydraulic motor FFPMS250C, 252,3 ccm/REV, shaft 32mm, 4-hole flange, G 1/2 inch	£188.25	€ 254.15
FFPMS250K	Hydraulic motor FFPMS250K, 252,3 cm3/U, conic shaft 1:10, Ø 35, 4-hole SAE A flange, G1/2 inch	£191.28	€ 258.23
FFPMS250SH	Hydraulic motor FFPMS250SH, 252,3 ccm/REV, splined 31,75 12/24 D.Pitch, 30°, Z/T = 14, G 1/2 inch	£192.06	€ 259.28
FFPMS250SL	Hydraulic motor FFPMS250SL, 252,3 ccm/REV, shaft 32mm, P.T.O. shaft 1 3/8", G 1/2 inch	£195.83	€ 264.37
FFPMS315C	Hydraulic motor FFPMS315C, 315,1 ccm/REV, shaft 32mm, 4-hole flange, G 1/2 inch	£202.66	€ 273.59
FFPMS315K	Hydraulic motor FFPMS315K, 315,1 cm3/U, conic shaft 1:10, Ø 35, 4-hole SAE A flange, G1/2 inch	£205.70	€ 277.69
FFPMS315SBU	Hydraulic motor FFPMS315SBU, 315,1 ccm/REV, splined 1 1/4" 12/24 D.Pitch, 30°, Z/T = 14, 7/8-14UNF	£202.66	€ 273.59
FFPMS315SH	Hydraulic motor FFPMS315SH, 315,1 ccm/REV, splined 31,75 12/24 D.Pitch, 30°, Z/T = 14, G 1/2 inch	£206.44	€ 278.70
FFPMS315SL	Hydraulic motor FFPMS315SL, 315,1 ccm/REV, P.T.O. shaft 1 3/8", G 1/2 inch	£210.23	€ 283.81
FFPMS400C	Hydraulic motor FFPMS400C, 397 ccm/REV, shaft 32mm, 4-hole flange, G 1/2 inch	£217.43	€ 293.52
FFPMS400C25	Hydraulic motor FFPMS400C25, 397,0 ccm/REV, shaft 25mm, 4-hole flange, G 1/2 inch	£217.43	€ 293.52
FFPMS400S	Hydraulic motor FFPMS400S, 397 ccm/REV, SAE 6B shaft 1 3/8", G 1/2 inch	£217.43	€ 293.52
FFPMS400SH	Hydraulic motor FFPMS400SH, 397 ccm/REV, splined 31,75 12/24 D.Pitch, 30°, Z/T = 14, G 1/2 inch	£221.22	€ 298.65
FFPMS400SL	Hydraulic motor FFPMS400SL, 397 ccm/REV, P.T.O. shaft 1 3/8", G 1/2 inch	£224.99	€ 303.73
FFPMS80C	Hydraulic motor FFPMS80C, 80,8 ccm/REV, shaft 32mm, 4-hole flange, G 1/2 inch	£172.66	€ 233.10
FFPMS80SH	Hydraulic motor FFPMS80SH, 80,8 ccm/REV, splined 31,75 12/24 D.Pitch, 30°, Z/T = 14, G 1/2 inch	£176.45	€ 238.20
FFPMS80SL	Hydraulic motor FFPMS80SL, 80,8 ccm/REV, P.T.O. shaft 1 3/8", G 1/2 inch	£180.24	€ 243.32
FFPMSA100C	Hydraulic motor FFPMSA100C, 98,6 ccm/REV, shaft 32mm, 2-hole flange SAE A, G 1/2 inch	£174.59	€ 235.70
FFPMSA100C25	Hydraulic motor FFPMSA100C25, 99,8 ccm/REV, shaft 25mm, 2-hole flange SAE A, G 1/2 inch	£174.59	€ 235.70
FFPMSA125C	Hydraulic motor FFPMSA125C, 125,2 ccm/REV, shaft 32mm, 2-hole flange SAE A, G 1/2 inch	£176.60	€ 238.41
FFPMSA125C25	Hydraulic motor FFPMSA125C25, 125,2 ccm/REV, shaft 25mm, 2-hole flange SAE A, G 1/2 inch	£176.60	€ 238.41
FFPMSA160C	Hydraulic motor FFPMSA160C, 159,5 ccm/REV, shaft 32mm, 2-hole flange SAE A, G 1/2 inch	£178.70	€ 241.24
FFPMSA160C25	Hydraulic motor FFPMSA160C25, 159,5 ccm/REV, shaft 25mm, 2-hole flange SAE A, G 1/2 inch	£178.70	€ 241.24
FFPMSA200C	Hydraulic motor FFPMSA200C, 201,2 ccm/REV, shaft 32mm, 2-hole flange SAE A, G 1/2 inch	£180.06	€ 243.08
FFPMSA200C25	Hydraulic motor FFPMSA200C25, 200 ccm/REV, shaft 25mm, 2-hole flange SAE A, G 1/2 inch	£180.06	€ 243.08
FFPMSA250C	Hydraulic motor FFPMSA250C, 252,3 ccm/REV, shaft 32mm, 2-hole flange SAE A, G 1/2 inch	£188.25	€ 254.15
FFPMSA250C25	Hydraulic motor FFPMSA250C25, 252,3 ccm/REV, shaft 25mm, 2-hole flange, G 1/2 inch	£188.25	€ 254.15
FFPMSA315C25	Hydraulic motor FFPMSA315C25, 315,1 ccm/REV, shaft 25mm, 2-hole flange, G 1/2 inch	£202.66	€ 273.59
FFPMSA315KA	Hydraulic motor FFPMSA315KA, 315,1 ccm/REV, tapered shaft 1:8, 2-hole flange SAE A, G 1/2 inch	£205.70	€ 277.69
FFPMSA400S	Hydraulic motor FFPMSA400S, 397,0 ccm/REV, splined SAE6B, Z/T = 6	£217.43	€ 293.52
FFPMSA400SBU	Hydraulic motor FFPMSA400SBU, 397,0 ccm/REV, splined 1 1/4" 12/24 D.Pitch, 30°, Z/T = 14, 7/8-14UNF	£217.43	€ 293.52
FFPMSA80C	Hydraulic motor FFPMSA80C, 99,8 ccm/REV, shaft 32mm, 2-hole flange SAE A, G 1/2 inch	£172.66	€ 233.10
FFPMSA80C25	Hydraulic motor FFPMSA80C25, 99,8 ccm/REV, shaft 25mm, 2-hole flange SAE A, G 1/2 inch	£172.66	€ 233.10
FFPMSF100C	Hydraulic motor FFPMSF100C, 99,8 ccm/REV, shaft 32mm, 4-hole magneto flange SAE A, G 1/2 inch	£174.59	€ 235.70
FFPMSF125C	Hydraulic motor FFPMSF125C, 125,2 ccm/REV, shaft 32mm, 4-hole flange, G 1/2 inch	£176.60	€ 238.41
FFPMSF160C	Hydraulic motor FFPMSF160C, 159,5 ccm/REV, shaft 32mm, 4-hole Magneto flange SAE A, G 1/2 inch	£178.70	€ 241.24
FFPMSF200C	Hydraulic motor FFPMSF200C, 200 ccm/REV, shaft 32mm, 4-hole magneto flange, G 1/2 inch	£180.06	€ 243.08
FFPMSF200C25	Hydraulic motor FFPMSF200C25, 200,0 ccm/REV, shaft 25mm, 4-hole magneto flange, G 1/2 inch	£180.86	€ 244.17
FFPMSF315C	Hydraulic motor FFPMSF315C, 316,8 ccm/REV, shaft 32mm, 4-hole magneto flange, G 1/2 inch	£202.66	€ 273.59
FFPMSF315C25	Hydraulic motor FFPMSF315C25, 315,8 ccm/REV, shaft 25mm, 4-hole magneto flange, G 1/2 inch	£202.66	€ 273.59
FFPMSF315SH	Hydraulic motor FFPMSF315SH, 315,1 ccm/REV, splined shaft Ø31,75, 4-hole magneto flange, G 1/2 inch	£206.45	€ 278.72
FFPMSS100	Hydraulic motor Short FFPMS100, 99,8 ccm/REV, G 1/2 inch	£159.45	€ 215.25
FFPMSS125	Hydraulic motor Short FFPMS125, 125,2 ccm/REV, G 1/2 inch	£161.46	€ 217.97
FFPMSS160	Hydraulic motor Short FFPMS160, 159,5 ccm/REV, G 1/2 inch	£163.56	€ 220.81
FFPMSS200	Hydraulic motor Short FFPMS200, 200 ccm/REV, G 1/2 inch	£165.74	€ 223.74
FFPMSS250	Hydraulic motor Short FFPMS250, 252,2 ccm/REV, G 1/2 inch	£173.13	€ 233.73
FFPMSS315	Hydraulic motor Short FFPMS315, 315,1 ccm/REV, G 1/2 inch	£187.52	€ 253.15

Continued on next page

PART NUMBER	DESCRIPTION	NETT. PRICE	
		£ STERLING	€ EUROS
FFPMSS400	Hydraulic motor Short FFPMS400, 397,0 ccm/REV, G 1/2 inch	£202.29	€ 273.10
FFPMSS80	Hydraulic motor Short FFPMS80, 80,8 ccm/REV, G 1/2 inch	£157.53	€ 212.65
FFPMSU125	Hydraulic motor Ultra-Short FFPMSU125, 125,2 ccm/REV, G 1/2 inch	£161.46	€ 217.97
FFPMSU160	Hydraulic motor Ultra-Short FFPMSU160, 159,5 ccm/REV, G 1/2 inch	£163.57	€ 220.82
FFPMSU200	Hydraulic motor Ultra-Short FFPMSU200, 200 ccm/REV, G 1/2 inch	£165.74	€ 223.74
FFPMSU250	Hydraulic motor Ultra-Short FFPMSU250, 252,3 ccm/REV, G 1/2 inch	£173.13	€ 233.73
FFPMSU315	Hydraulic motor Ultra-Short FFPMSU315, 315,1 ccm/REV, G 1/2 inch	£187.54	€ 253.18
FFPMSU400	Hydraulic motor Ultra-Short FFPMSU400, 397,0 ccm/REV, G 1/2 inch	£202.29	€ 273.10
FFPMSW100C	Hydraulic motor FFPMSW100C, 99,8 ccm/REV, cyl. shaft 32mm, wheel flange, G 1/2 inch,	£180.20	€ 243.26
FFPMSW100K	Hydraulic motor FFPMSW100K, 99,8 ccm/REV, conical shaft 1:10, wheel flange, G 1/2 inch,	£183.21	€ 247.33
FFPMSW125C	Hydraulic motor FFPMSW125C, 125,2 ccm/REV, cyl. shaft 32mm, wheel flange, G 1/2 inch,	£182.19	€ 245.96
FFPMSW125K	Hydraulic motor FFPMSW125K, 125,2 ccm/REV, conical shaft 1:10, wheel flange, G 1/2 inch,	£185.22	€ 250.04
FFPMSW160C	Hydraulic motor FFPMSW160C, 159,5 ccm/REV, cyl. shaft 32mm, wheel flange, , G 1/2 inch	£184.29	€ 248.79
FFPMSW160K	Hydraulic motor FFPMSW160K, 159,5 ccm/REV, conical shaft 1:10, wheel flange, G 1/2 inch,	£187.32	€ 252.87
FFPMSW200C	Hydraulic motor FFPMSW200C, 200,0 ccm/REV, cyl. shaft 32mm, wheel flange, , G 1/2 inch	£186.46	€ 251.73
FFPMSW200K	Hydraulic motor FFPMSW200K, 200,0 ccm/REV, conical shaft 1:10, wheel flange, G 1/2 inch,	£189.48	€ 255.80
FFPMSW250C	Hydraulic motor FFPMSW250C, 252,3 ccm/REV, cyl. shaft 32mm, wheel flange, , G 1/2 inch	£193.86	€ 261.71
FFPMSW250K	Hydraulic motor FFPMSW250K, 252,3 ccm/REV, conical shaft 1:10, wheel flange, G 1/2 inch,	£196.87	€ 265.78
FFPMSW315C	Hydraulic motor FFPMSW315C, 315,1 ccm/REV, cyl. shaft 32mm, wheel flange, , G 1/2 inch	£208.26	€ 281.15
FFPMSW315K	Hydraulic motor FFPMSW315K, 315,1 ccm/REV, conical shaft 1:10, wheel flange, G 1/2 inch,	£211.28	€ 285.22
FFPMSW315KA	Hydraulic motor FFPMSW315K, 315,1 ccm/REV, conical shaft 1:8, wheel flange, G 1/2 inch,	£211.28	€ 285.22
FFPMSW400C	Hydraulic motor FFPMSW400C, 397,0 ccm/REV, cyl. shaft 32mm, wheel flange, , G 1/2 inch	£223.01	€ 301.07
FFPMSW400K	Hydraulic motor FFPMSW400K, 397,0 ccm/REV, tapered shaft 1:10, wheel flange, G 1/2 inch	£226.05	€ 305.16
FFPMSW80C	Hydraulic motor FFPMSW80C, 80,8 ccm/REV, cyl. Shaft 32mm, wheel flange, , G 1/2 inch	£178.26	€ 240.66
FFPMSW80K	Hydraulic motor FFPMSW80K, 80,8 ccm/REV, conical shaft 1:10, wheel flange, G 1/2 inch,	£181.28	€ 244.73

# HYDRAULIC MOTOR SERIES FFPMSY



- Reinforced version
- Disk valve type with geroler
- Low starting torque and high efficiency
- Designed for higher pressure
- Internal check valve
- Usage without drain line possible
- Tapered roller bearing for high radial load

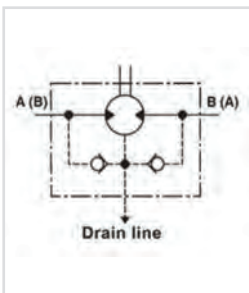
TYPE		FFPMSY	FFPMSY	FFPMSY	FFPMSY	FFPMSY	FFPMSY
		160	200	250	315	400	475
Displacement [cm <sup>3</sup> /REV]		154	194	243	311	394	475
Max. Speed [RPM]	Cont.	470	375	300	240	185	155
	Int.(1)	560	450	360	280	225	185
Max. Torque [daNm]	Cont.	48.5	58.6	70.8	88	88	91
	Int.(1)	54	64.5	80.6	96	96	96
Max. Output Power [kW]	Cont.	18.1	18.1	18	17	11	9
	Int.(1)	25	24	23.8	20.2	12	11
Max. Pressure Drop [bar]	Cont.	210	210	200	200	160	140
	Int.(1)	225	225	225	225	175	150
	Peak (2)	225	225	225	225	200	175
Max. Oil flow [l/min]	Cont.	75	75	75	75	75	75
	Int.(1)	90	90	90	90	90	90
Max. Input Pressure [bar]	Cont.	250	250	250	250	250	250
	Int.(1)	300	300	300	300	300	300
Weight [kg]		10.7	11.1	11.6	12.3	13.2	14.3

(1) Intermittent operation rating applies to 6 sec. of every minute  
 (2) Peak load rating applies to 0,6 sec of every minute

## PRICES FOR MOTOR SERIES FFPMSY ON APPLICATION

## HYDRAULIC MOTOR SERIES FFPMT

www.flowfitonline.com  
TECH. DATA SHEET  
**FHM07**



The FFPMT motor provides high performance and high efficiency.

The anti-rust coating colour is phosphating coat. Phosphate coating is used for increased corrosion protection, and improved friction properties. This is applied to threaded parts and top coated with oil to add anti-galling and rust inhibiting characteristics. Its Colour is, dark grey / black.

The Flowfit FFPMT hydraulic motor fully interchanges with the Sauer Danfoss OMT range and all other leading brands.

- Disk valve type with geroler
- Low starting torque and high efficiency
- Optimized for small spaces
- Internal check valve
- Usage without drain line possible
- Tapered roller bearing for high radial load

TYPE		FFPMT 160	FFPMT 200	FFPMT 250	FFPMT 315	FFPMT 400	FFPMT 500	FFPMT 630	FFPMT 800
Displacement [cm <sup>3</sup> /REV]		161.1	201.4	251.8	326.3	410.9	523.6	629.1	801.8
Max. Speed [RPM]	Cont.	625	625	500	380	305	240	196	154
	Int.(1)	780	750	600	460	365	285	233	185
Max. Torque [daNm]	Cont.	47	59	73	95	108	122	131.8	146.4
	Int.(1)	56	71	88	114	126	137	149.8	152
	Peak (2)	66.9	83.8	103.6	134.6	145	164.4	161.9	166.5
"Max. Output Power [kW]"	Cont.	27.7	34.9	34.5	34.9	31.2	28.8	25.3	22.2
	Int.(1)	32	40	40	40	35	35	27.5	26.8
Max. Pressure Drop [bar]	Cont.	200	200	200	200	180	160	140	125
	Int.(1)	240	240	240	240	210	180	160	130
	Peak(2)	280	280	280	280	240	210	190	160
"Max. Oil flow [l/min]"	Cont.	80	100	100	100	100	100	100	100
	Int.(1)	125	150	150	150	150	150	150	150
Max. Input Pressure [bar]	Cont.	210	210	210	210	210	210	210	210
	Int.(2)	300	300	300	300	300	300	300	300
Weight [kg]		19.5	20	20.5	21	22	23	24	25

PART NUMBER	DESCRIPTION	NETT. PRICE	
		£ STERLING	€ EUROS
FFPMT160C	Hydraulic motor FFPMT160C, 160 ccm/REV, shaft 40mm, 4-hole flange	£328.46	€ 443.43
FFPMT160SH	Hydraulic motor FFPMT160SH, 160 CCM/REV, SPLINED SHAFT 1 1/2", 4-hole flange	£332.93	€ 449.45
FFPMT160SL	Hydraulic motor FFPMT160SL, 160,0 cm <sup>3</sup> /U, 6-34,85mm P.T.O. Splined, 4-hole flange	£336.53	€ 454.31
FFPMT200C	Hydraulic motor FFPMT200C,200 ccm/REV, shaft 40mm, 4-hole flange	£329.38	€ 444.67
FFPMT200K	Hydraulic motor FFPMT200K,200 ccm/REV, tapered shaft 1:10, 4-hole flange	£336.24	€ 453.91
FFPMT200SH	Hydraulic motor FFPMT200SH, 200,0 ccm/REV, splined shaft 1 1/2", 4-hole flange	£333.17	€ 449.78
FFPMT200SL	Hydraulic motor FFPMT200SL, 200 ccm/REV, PTO shaft, 4-hole flange	£337.46	€ 455.57
FFPMT250C	Hydraulic motor FFPMT250C,250 ccm/REV, shaft 40mm, 4-hole flange	£334.88	€ 452.08
FFPMT250SH	Hydraulic motor FFPMT250SH, 250,4 ccm/REV, splined shaft 1 1/2", 4-hole flange	£338.67	€ 457.21
FFPMT250SL	Hydraulic motor FFPMT250SL, 250,4 ccm/REV, PTO shaft, 4-hole flange	£342.93	€ 462.96
FFPMT315C	Hydraulic motor FFPMT315C, 319,5 ccm/REV, shaft 40mm, 4-hole flange	£338.93	€ 457.55
FFPMT315SH	Hydraulic motor FFPMT315SH, 319,5 ccm/REV, splined shaft 1 1/2", 4-hole flange	£342.71	€ 462.65
FFPMT315SL	Hydraulic motor FFPMT315SL, 319,5 ccm/REV, PTO shaft, 4-hole flange	£346.98	€ 468.43
FFPMT400C	Hydraulic motor FFPMT400C, 401,8 ccm/REV, shaft 40mm, 4-hole flange	£352.06	€ 475.29
FFPMT400K	Hydraulic motor FFPMT400K, 401,8 ccm/REV, tapered shaft 1:10, 4-hole flange	£358.92	€ 484.53
FFPMT400SH	Hydraulic motor FFPMT400SH, 410,9 ccm/REV, splined shaft 1 1/2", 4-hole flange	£355.85	€ 480.39

PART NUMBER	DESCRIPTION	NETT. PRICE	
		£ STERLING	€ EUROS
FFPMT500C	Hydraulic motor FFPMT500C, 523,5 ccm/REV, shaft 40mm, 4-hole flange	£378.31	€ 510.72
FFPMT500K	Hydraulic motor FFPMT500K, 523,5 ccm/REV, tap. shaft 1:10, 4-hole flange	£385.24	€ 520.06
FFPMT500SH	Hydraulic motor FFPMT500SH, 523,5 ccm/REV, splined shaft 1 1/2", 4-hole flange	£382.11	€ 515.85
FFPMT800C	Hydraulic motor FFPMT800C, 801 ccm/REV, shaft 40mm, 4-hole flange	£398.48	€ 537.95
FFPMT400C	Hydraulic motor FFPMT400C, 401,8 ccm/REV, Welle 40mm, 4-hole SAE-C flange	£352.06	€ 475.29
FFPMT400SH	Hydraulic motor FFPMT400SH, 401,8 ccm/REV, splined shaft 1 1/2", 4-hole SAE-C flange	£355.85	€ 480.39
FFPMTS160	Hydraulic motor Short FFPMTS160, 160,0 cm3/U	£308.77	€ 416.85
FFPMTS200	Hydraulic motor Short FFPMTS200, 200,0 cm3/U	£309.70	€ 418.09
FFPMTS250	Hydraulic motor Short FFPMTS250, 250,4 cm3/U	£450.09	€ 607.62
FFPMTS315	Hydraulic motor Short FFPMTS315, 319,5 cm3/U	£319.26	€ 431.00
FFPMTS400	Hydraulic motor Short FFPMTS400, 401,8 cm3/U	£332.38	€ 448.71
FFPMTS500	Hydraulic motor Short FFPMTS500, 523,5 cm3/U	£358.66	€ 484.20
FFPMTW160C	Hydraulic motor FFPMTW160C, 160,0 ccm/REV, 40mm shaft, wheelflange	£346.64	€ 467.96
FFPMTW160K	Hydraulic motor FFPMTW160K, 160,0 ccm/REV, conical shaft 1:10, wheelflange	£353.48	€ 477.20
FFPMTW200C	Hydraulic motor FFPMTW200C, 200,0 ccm/REV, 40mm shaft cyl., wheelflange	£347.55	€ 469.21
FFPMTW200K	Hydraulic motor FFPMTW200K, 200,0 ccm/REV, conical shaft 1:10, wheelflange	£354.41	€ 478.45
FFPMTW200SH	Hydraulic motor FFPMTW200SH, 200,0 ccm/REV, splined shaft 1 1/2", wheelflange	£351.35	€ 474.31
FFPMTW250C	Hydraulic motor FFPMTW250C, 250 ccm/REV, shaft 40mm, wheelflange	£353.05	€ 476.61
FFPMTW250K	Hydraulic motor FFPMTW250K, 250,4 ccm/REV, conical shaft 1:10, wheelflange	£359.89	€ 485.85
FFPMTW250SH	Hydraulic motor FFPMTW250SH, 250 ccm/REV, splined shaft, wheelflange	£356.82	€ 481.71
FFPMTW315C	Hydraulic motor FFPMTW315C, 319,5 ccm/REV, 40mm shaft, wheelflange	£357.10	€ 482.08
FFPMTW315K	Hydraulic motor FFPMTW315K, 319,5 ccm/REV, conical shaft 1:10, wheelflange	£363.95	€ 491.32
FFPMTW400C	Hydraulic motor FFPMTW400C, 401,8 ccm/REV, cyl. shaft 40mm, wheelflange	£370.23	€ 499.82
FFPMTW400K	Hydraulic motor FFPMTW400K, 401,8 ccm/REV, conical shaft 1:10, wheelflange	£377.09	€ 509.07
FFPMTW500C	Hydraulic motor FFPMTW500C, 523,5 ccm/REV, 40mm shaft, wheelflange	£396.49	€ 535.26
FFPMTW500K	Hydraulic motor FFPMTW500K, 523,5 ccm/REV, conical shaft 1:10, wheelflange	£403.34	€ 544.51
FFPMTW800C	Hydraulic motor FFPMTW800C, 801 ccm/REV, 40mm shaft, wheelflange	£415.30	€ 560.66
FFPMTW800K	Hydraulic motor FFPMTW800K, 801 ccm/REV, conical shaft 1:10, wheelflange	£422.14	€ 569.89

# HYDRAULIC MOTOR SERIES FFPMV

www.flowfitonline.com  
TECH. DATA SHEET  
**FHM08**



The FFPMV motor provides high performance and high efficiency.

The Flowfit FFPMV hydraulic motor fully interchanges with the Sauer Danfoss OMV range and all other leading brands.

The anti-rust coating colour is phosphatizing coat. Phosphate coating is used for increased corrosion protection, and improved friction properties. This is applied to threaded parts and top coated with oil to add anti-galling and rust inhibiting characteristics. Its Colour is, dark grey / black.

- Disk valve type with geroler
- Low starting torque and high efficiency
- Internal check valve
- Usage without drain line possible
- Tapered roller bearing for high radial load
- High torque for ambitious applications

TYPE		FFPMV	FFPMV	FFPMV	FFPMV	FFPMV	FFPMV
		315	400	500	630	800	1000
Displacement [cc /REV]		333	419	518	666	801	990
Max. Speed [RPM]	Cont.	510	500	400	320	250	200
	Int.(1)	630	600	480	380	300	240
Max. Torque [daNm]	Cont.	920	1180	1460	1660	1880	2015
	Int.(1)	1110	1410	1760	1940	2110	2280
	Peak (2)	1290	1640	2050	2210	2470	2400
Max. Output Power [kW]	Cont.	38	47	47	40	33	180
	Int.(1)	46	56	56	56	44	40
Max. Pressure Drop [bar]	Cont.	200	200	200	180	160	140
	Int.(1)	240	240	240	210	180	160
	Peak (2)	280	280	280	240	210	180
Max. Oil flow [l/min]	Cont	160	200	200	200	200	200
	Int.(1)	200	240	240	240	240	240
Max. Input Pressure [bar]	Cont.	210	210	210	210	210	210
	Int.(1)	250	250	250	250	250	250
	Peak (2)	300	300	300	300	300	300
Weight [kg]		31.8	32.6	33.5	34.9	36.5	38.6

PART NUMBER	DESCRIPTION	NETT. PRICE	
		£ STERLING	€ EUROS
FFPMV315C	Hydraulic motor FFPMV315C, 333 ccm/REV, cyl. shaft 50mm, 4-hole flange	£380.52	€ 513.69
FFPMV315SH	Hydraulic motor FFPMV315SH, 333 ccm/REV, splined shaft, 4-hole flange	£387.67	€ 523.36
FFPMV400C	Hydraulic motor FFPMV400C, 419 ccm/REV, cyl. shaft 50mm, 4-hole flange	£395.98	€ 534.58
FFPMV500C	Hydraulic motor FFPMV500C, 518 ccm/REV, cyl. shaft 50mm, 4-hole flange	£419.13	€ 565.82
FFPMV630C	Hydraulic motor FFPMV630C, 666 ccm/REV, cyl. shaft 50mm, 4-hole flange	£438.84	€ 592.42
FFPMV800C	Hydraulic motor FFPMV800C, 801 ccm/REV, cyl. shaft 50mm, 4-hole flange	£492.11	€ 664.35
FFPMV800K	Hydraulic motor FFPMV800K, 801 ccm/REV, conical shaft 1:10, 4-hole flange	£501.03	€ 676.39
FFPMVW400K	Hydraulic motor FFPMVW400K, 419 ccm/REV, con. shaft 1:10, wheel flange	£433.57	€ 585.31
FFPMVW500K	Hydraulic motor FFPMVW500K, 518 ccm/REV, con. shaft 1:10, wheel flange	£456.70	€ 616.54
FFPMVW630C	Hydraulic motor FFPMVW630C, 666 ccm/REV, con. shaft 50mm, wheel flange	£467.49	€ 631.11
FFPMVW630K	Hydraulic motor FFPMVW630K, 666 ccm/REV, con. shaft 1:10, wheel flange	£476.41	€ 643.15
FFPMVW800C	Hydraulic motor FFPMVW800C, 801 ccm/REV, cyl. shaft 50mm, wheel flange	£520.77	€ 703.04
FFPMVW800K	Hydraulic motor FFPMVW800K, 801 ccm/REV, conical shaft 1:10, wheel-flange	£529.68	€ 715.07



# HYDRAULIC MOTOR SERIES

## Calculation of hydraulic motors

### Calculation of wheel drives:

1. Motor speed  $n$  of wheel drive:

$$n = \frac{2,65 \cdot v_{km} \cdot i}{R_m}$$

$v_{km}$  = Vehicle speed [km/h]

$R_m$  = Wheel rolling radius [m]

$i$  = Gear ratio between motor and wheels, if there's no gearbox use  $i=1$

2. Rolling resistance  $R$ , [daN]

The resistance force resulted in wheels contact with different surfaces:

$$R = G \cdot \varphi$$

$G$  = Total weight of vehicle [daN]

$\varphi$  = Rolling resistance coefficient (s. below)

Rolling resistance coefficient in case of rubber tire rolling on different surfaces	
Surface	$\varphi$
Concrete - faultless -	0.010
Concrete - good -	0.015
Concrete - bad -	0.020
Asphalt - faultless -	0.012
Asphalt - good -	0.017
Asphalt - bad -	0.022
Macadam - faultless -	0.015
Macadam - gut -	0.022
Macadam - bad -	0.037
Snow - 5cm -	0.025
Snow 10 cm -	0.037
Mud	0.037 - 0.150
Sand-gravel	0.060 - 0.150
Sand, loose	0.160 - 0.300

3. Grade resistance  $G_R$ , daN

$$G_R = G \cdot (\sin \alpha + \rho \cdot \cos \alpha)$$

$\alpha$  = gradient negotiation angle (see below table)

Grade [%]	$\alpha$ degrees	Grade [%]	$\alpha$ degrees
1	0°35'	12	6°5'
2	1°9'	15	8°31'
5	2°51'	20	11°19'
6	3°26'	25	14°3'
8	4°35'	32	18°
10	5°43'	60	31°

4. Accelerate force  $FA$  [daN]

Force  $FA$  necessary for acceleration from 0 to maximum speed  $v$  and time  $t$  can be calculated with:

$$FA = \frac{v_{km} \cdot G}{3,6 \cdot t} [daN]$$

$FA$  = Acceleration force [daN]

$t$  = Time [s]

Additional there are tractive efforts possible, e.g. if you use an additional trailer.

5. Total tractive effort  $F_{ges}$  [daN]

The necessary total tractive effort  $F_{ges}$  of the vehicle is calculated with the sum of single forces (point 2. - 4.). It is also necessary to consider 10% for safety reasons (e.g. for air resistance).

$$F_{ges} = 1,1 \cdot (R + G_R + FA)$$

$R$  = Rolling resistance [daN]

$G_R$  = Grade resistance [daN]

$FA$  = Acceleration force [daN]

6. Motordrehmoment  $M_M$

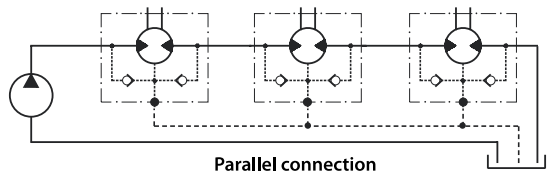
Necessary torque for every hydraulic motor can be calculated with:

$$M_M = \frac{F_{Ges} \cdot R_m}{N \cdot i \cdot \eta_M}$$

$N$  = Number of motors

$\eta_M$  = Mechanical gear efficiency (if it is available)

7. Connection of hydraulic motors



We are always advise to connect the drain port because the cooling and the lifetime of the motors is much better.

