

**GEAR PUMPS, BELL HOUSING
AND ELECTIC MOTORS**

FLOW DIVIDERS

PRODUCT

FLOW DIVIDERS

PAGE

236



**FROM
ONLY
£221.13
+VAT**



QUALITY PRODUCTS

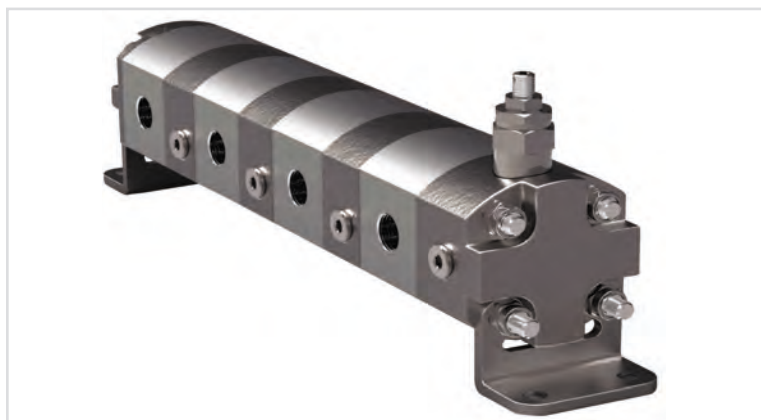


FREE ADVICE

*If the part
number needed
is not listed
please ask
the Flowfit
Sales Team*

FLOW DIVIDERS

www.flowfitonline.com
TECH. DATA SHEET
FD01



Galtech introduces new line of flow dividers DF, in response to market demands that every day challenges us to broaden the range of products.

The DF range is available with aluminum body and flange, displacements from 0.9 to 26 cm³ and on-demand with relief valves for the equalization of hydraulic cylinders

External flow gear dividers are non-dissipative hydraulic components consisting of multiple interconnected sections, which divide the inflow into equal or mutually proportional parts, allowing for synchronised movement of multiple actuators independently of the load. Flow dividers can also be used as pressure intensifiers to increase the working pressure of a plant.

PART NO	DIMENSION		DISPLACEMENT		MAX WORK PRESSURE		PEAK PRESSURE		MAX DP PRESSURE BETWEEN DIFFERENT SECTIONS		SPEED [REV/MIN]		NETT. PRICE PER SECTION	
	IN	OUT	CC/REV	IN ³	BAR	PSI	BAR	PSI	BAR	PSI	MIN	MAX	£ STERLING	€ EUROS
DF1														
DF1-1.2	G 3/8"	G 3/8"	1.18	(0.07)	240	(3480)	260	(3770)	180	(2611)	700	(4800)	£92.99	€ 125.54
DF1-1.6	G 3/8"	G 3/8"	1.6	(0.1)	240	(3480)	260	(3770)	180	(2611)	700	(4800)	£92.99	€ 125.54
DF1-2.5	G 3/8"	G 3/8"	2.5	(0.15)	220	(3190)	250	(3625)	180	(2611)	700	(4800)	£92.99	€ 125.54
DF1-3.7	G 3/8"	G 3/8"	3.7	(0.23)	210	(3045)	240	(3480)	180	(2611)	700	(3600)	£92.99	€ 125.54
DF1-5.0	G 3/8"	G 3/8"	5.0	(0.31)	180	(2610)	210	(3045)	160	(2321)	700	(3600)	£99.79	€ 134.72
DF1-7.8	G 3/8"	G 3/8"	7.76	(0.47)	170	(2465)	190	(2755)	130	(1885)	700	(3600)	£99.79	€ 134.72
DF1INRV	Group 1 with Relief Valve on Inlet only 0.9 cc/rev to 7.8 cc/rev. (Pump not included)											£35.15	€ 47.46	
DF1RVAN	Group 1 with Relief and Anticavitation Valves on each Stage/Section (Pump not included)											£35.15	€ 47.46	
DF2														
DF2-8	G 3/4"	G 1/2"	8.5	(0.52)	250	(3625)	270	(3915)	210	(3046)	700	(4000)	£122.47	€ 165.34
DF2-11	G 3/4"	G 3/4"	11	(0.67)	250	(3625)	270	(3915)	210	(3046)	700	(3000)	£122.47	€ 165.34
DF2-14	G 3/4"	G 3/4"	14	(0.85)	250	(3625)	270	(3915)	210	(3046)	700	(3000)	£122.47	€ 165.34
DF2-16	G 3/4"	G 3/4"	16.5	(1.01)	230	(3335)	240	(3480)	200	(2901)	700	(3000)	£122.47	€ 165.34
DF2-22	G 3/4"	G 3/4"	22.5	(1.37)	190	(2755)	200	(2900)	170	(2466)	700	(3000)	£132.68	€ 179.12
DF2-26	G 3/4"	G 3/4"	26	(1.59)	170	(2465)	180	(2610)	150	(2176)	700	(3000)	£132.68	€ 179.12
DF2RVAN	Group 2 with Relief and Anticavitation Valves on each Stage/Section. (Pump not included)											£60.10	€ 81.14	