

FILTREC FILTERS

FILTREC TECHNICAL FILTRATION

PRODUCT	PAGE
FILTREC RETURN LINE FILTERS	368
FILTREC TANK TOP RETURN LINE FILTERS	369
FILTREC LOW PRESSURE INLINE FILTER	375
FILTREC SUCTION LINE FILTERS	376
FILTREC SUCTION STRAINERS	377
FILTREC SUCTION FILTERS	378
FILTREC MEDIUM PRESSURE FILTERS	379
FILTREC HIGH PRESSURE FILTERS	382



**FROM ONLY
£9.28
+VAT**



**FROM ONLY
£79.77
+VAT**



**FROM ONLY
£9.02
+VAT**



QUALITY PRODUCTS



FREE ADVICE

If the part number needed is not listed please ask the Flowfit Sales Team

FILTREC RETURN LINE FILTERS

IN-LINE RETURN FILTERS FA-1



www.flowfitonline.com
TECH. DATA SHEET
FTF01



FILTER HOUSING TECHNICAL INFORMATION

Description: In line low-pressure spin-on filter assemblies, suction and return lines.

Max flow rate: 300 l/min (79 gpm)

Max working pressure: As per NFPA T 3.10.17: 12 Bar (175 psi)

Test pressure: As per NFPA T 3.10.17: 15 Bar (217.5 psi)

Burst pressure: As per NFPA T 3.10.17: 20 Bar (290 psi)

Connection Ports: BSP

By-pass setting: suction line 0,25 Bar (3.6 psi) return line 1,7 Bar (24.6 psi)

Indicator: Visual and electrical

Working temperature: 25°C +120°C (-13°F +248°F)

Materials: •Head: aluminium

•Housing: carbon steel

•Seal: Buna-N

Fluids compatibility: ISO 2943: Filter assembly compatible with mineral oils and some synthetic or vegetable oils. With other fluid applications please contact Filtrac S.p.A.

FILTER ELEMENT

Filter media: Microglass fiber 3,6,10,25 µm

Cellulose 10,25 µm

Wire mesh 60, 125 /µm

Collapse pressure: as per ISO 2941: 4 Bar (58 psi)

ORDER CODE	DESCRIPTION	PORTS	FLOW RATE	NETT. PRICE	ELEMENT	NETT. PRICE
SUPPLIED WITH VACUUM GAUGE INDICATOR AND BYPASS VALVE						
10 MICRON CELLULOSE						
				£ STERLING	€ EUROS	
ZZ004770	FA-1-10-C10-B4-R-R1	3/4" BSP	70 L/MIN	£21.63	€ 29.21	A110C10
ZZ004771	FA-1-11-C10-B4-R-R1	3/4" BSP	75 L/MIN	£36.67	€ 49.50	A111C10
ZZ004772	FA-1-20-C10-B6-R-R1	1 1/4" BSP	130 L/MIN	£45.08	€ 60.86	A120C10
ZZ004773	FA-1-21-C10-B6-R-R1	1 1/4" BSP	150 L/MIN	£46.88	€ 63.29	A121C10
ZZ004774	FA-1-30-C10-B7-R-R1 * 2 elements	1 1/2" BSP	300 L/MIN	£59.50	€ 80.33	A120C10
ZZ004775	FA-1-31-C10-B7-R-R1 * 2 elements	1 1/2" BSP	310 L/MIN	£72.12	€ 97.36	A121C10
ZZ004776	FA-1-40-C10-B7-R-R1 * 2 elements	1 1/2" BSP	300 L/MIN	£138.24	€ 186.61	A120C10
25 MICRON CELLULOSE						
ZZ004777	FA-1-10-C25-B4-R-R1	3/4" BSP	75 L/MIN	£21.63	€ 29.21	A110C25
ZZ004778	FA-1-11-C25-B4-R-R1	3/4" BSP	80 L/MIN	£36.67	€ 49.50	A111C25
ZZ004779	FA-1-20-C25-B6-R-R1	1 1/4" BSP	170 L/MIN	£45.08	€ 60.86	A120C25
ZZ004780	FA-1-21-C25-B6-R-R1	1 1/4" BSP	190 L/MIN	£46.88	€ 63.29	A121C25
ZZ004781	FA-1-30-C25-B7-R-R1 * 2 elements	1 1/2" BSP	320 L/MIN	£59.50	€ 80.33	A120C25
ZZ004782	FA-1-31-C25-B7-R-R1 * 2 elements	1 1/2" BSP	340 L/MIN	£72.12	€ 97.36	A121C25
ZZ004783	FA-1-40-C25-B7-R-R1 * 2 elements	1 1/2" BSP	320 L/MIN	£138.24	€ 186.61	A120C25

The given flow rate values refer to applications with mineral oil having viscosity of 30 cSt at working temperature. For applications with different fluid or working conditions, a corrective factor must be applied by referring to the technical information.

OPTIONAL EXTRAS

INDICATORS	NETT. PRICE
	£ STERLING € EUROS
R2 Pressure switch 1.3 Bar setting O.C (18.85 Psi)	£15.87 € 21.42
R3 Pressure switch 1.3 Bar setting C.C (18.85 Psi)	£15.63 € 21.09
R4 Pressure switch 1.3 Bar setting (18.85 Psi)	£57.12 € 77.11
R6 Visual pressure 1.2 Bar setting (17.4 Psi)	£19.62 € 26.48
R7 Pressure/vacuum gauge -1+5 Bar setting (-14.5+72.5Psi)	£5.49 € 7.41
Z1 Differential visual switch 1.3 Bar setting (18.85 Psi) - FA-1-30/31 only	£26.83 € 36.22
Z2 Differential electric visual switch 1.3 Bar setting (18.85 Psi) - FA-1-30/31 only	£36.94 € 49.86
Z15 Differential visual switch 1.3 Bar setting (18.85 Psi) - FA-1-40/41 only	£26.83 € 36.22
Z16 Differential electric visual switch 1.3 Bar setting (18.85 Psi) - FA-1-40/41 only	£36.94 € 49.86
Z20 Differential visual switch 1.3 Bar setting (18.85 Psi) - FA-1-20/21 only	£15.00 € 20.25
Z21 Differential electric switch 1.3 Bar setting (18.85 Psi) - FA-1-20/21 only	£12.41 € 16.75

FILTREC TANK TOP RETURN LINE FILTERS

TANK TOP RETURN SPIN-ON FILTERS FA-2



www.flowfitonline.com
TECH. DATA SHEET
FTF02



FILTER HOUSING TECHNICAL INFORMATION

Description: Tank top return line spin-on filter assemblies.

Max flow rate: 150 l/min (40 gpm)

Max working pressure: As per NFPA T 3.10.17: 12 Bar (175 psi)

Test pressure: As per NFPA T 3.10.17: 15 Bar (217.5 psi)

Burst pressure: As per NFPA T 3.10.17: 20 Bar (290 psi)

Connection Ports: BSP

Indicator: Visual and electrical

Working temperature: -25°C +100°C (-13°F +212°F)

- Materials:**
- Head: aluminium
 - Housing: carbon steel
 - Seal: Buna-N

Fluids compatibility: ISO 2943: Filter assembly compatible with mineral oils and some synthetic or vegetable oils. With other fluid applications please contact Filtrac S.p.A.

FILTER ELEMENT

Filter media: Microglass fiber 3,6,10,25 ,µm
Cellulose 10,25 µm
Wire mesh 60, 125,µm

Collapse pressure: As per ISO 2941: 4 Bar (58 psi)

By-pass setting: Return line 1,7 Bar (24.6 psi)

ORDER CODE	DESCRIPTION	PORTS	FLOW RATE	NETT. PRICE		ELEMENT	NETT. PRICE	
				£ STERLING	€ EUROS		£ STERLING	€ EUROS
10 MICRON CELLULOSE								
ZZ004784	FA-2-10-C10-BM-B4-R1	3/4" BSP	60 L/MIN	£49.06	€ 66.25	A210C10BM	£15.02	€ 20.28
ZZ004785	FA-2-11-C10-BM-B4-R1	3/4" BSP	75 L/MIN	£49.06	€ 66.25	A211C10BM	£17.53	€ 23.66
ZZ004786	FA-2-20-C10-BM-B4-R1	1 1/2" BSP	140 L/MIN	£67.32	€ 90.87	A220C10BM	£21.15	€ 28.56
ZZ004787	FA-2-21-C10-BM-B4-R1	1 1/2" BSP	160 L/MIN	£68.52	€ 92.50	A221C10BM	£26.79	€ 36.18
25 MICRON CELLULOSE								
ZZ004788	FA-2-10-C25-BM-B4-R1	3/4" BSP	80 L/MIN	£49.06	€ 66.25	A210C25BM	£15.02	€ 20.28
ZZ004789	FA-2-11-C25-BM-B4-R1	3/4" BSP	90 L/MIN	£49.06	€ 66.25	A211C25BM	£17.53	€ 23.66
ZZ004790	FA-2-20-C25-BM-B4-R1	1 1/2" BSP	170 L/MIN	£67.32	€ 90.87	A220C25BM	£21.15	€ 28.56
ZZ004791	FA-2-21-C25-BM-B4-R1	1 1/2" BSP	200 L/MIN	£68.52	€ 92.50	A221C25BM	£26.79	€ 36.18
10 MICRON FIBREGLASS								
ZZ004792	FA-2-10-G10-BM-B4-R1	3/4" BSP	50 L/MIN	£64.17	€ 86.64	A210G10BM	£25.24	€ 34.07
ZZ004793	FA-2-11-G10-BM-B4-R1	3/4" BSP	60 L/MIN	£76.81	€ 103.69	A211G10BM	£34.86	€ 47.06
ZZ004794	FA-2-20-G10-BM-B4-R1	1 1/2" BSP	120 L/MIN	£100.18	€ 135.24	A220G10BM	£46.07	€ 62.20
ZZ004795	FA-2-21-G10-BM-B4-R1	1 1/2" BSP	130 L/MIN	£116.39	€ 157.13	A221G10BM	£58.42	€ 78.86

The given flow rate values refer to applications with mineral oil having viscosity of 30 cSt at working temperature. For applications with different fluid or working conditions, a corrective factor must be applied by referring to the technical information.

OPTIONAL EXTRAS

INDICATORS	NETT. PRICE
	£ STERLING € EUROS
R2 Pressure switch O.C 1.3 Bar 18.85 Psi	£15.87 € 21.42
R3 Pressure switch C.C 1.3 Bar 18.85 C.C	£15.63 € 21.09
R7 Pressure vacuum gauge -1+5 -14.5+72.5 Psi	£5.49 € 7.41

TANK TOP RETURN FILTER FR-1



www.flowfitonline.com
TECH. DATA SHEET
FTF03



FILTER HOUSING Technical Information

Description: Tank top mounting design return line with reusable or disposable element.

Max flow rate: 600 l/min (158 gpm)

Max working pressure: As per NFPA T 3.10.5.1: 8 Bar (116 psi)

Test pressure: As per NFPA T 3.10.5.1: 12 Bar (174 psi)

Burst pressure: As per NFPA T 3.10.5.1: 16 Bar (232 psi)

Connection Ports: BSP, NPT, SAE J514b

Indicator: Visual and electrical.

Working temperature: -25°C + 100°C (-13°F +212°F)

Materials: •Cover: aluminium

•Head: aluminium

•Bowl: nylon - carbon steel

•Seal: Buna-N / Viton®

Fluids compatibility: ISO 2943: Filter assembly compatible with mineral oils and some synthetic or vegetable oils. With other fluid applications please contact Filtrec S.p.A.

FILTER ELEMENT

Filter media: Microglass fiber 3,6,10,25 µm
Cellulose 10,25 µm
Wire mesh 60, 125 µm

Collapse pressure: As per ISO 2941: 10 Bar (145 psi)

By-pass: Return line 1,7 Bar (24.6 psi)

ORDER CODE	DESCRIPTION	PORTS	FLOW RATE	NETT. PRICE	ELEMENT	NETT. PRICE
ALL SUPPLIED WITH R1 INDICATOR ON TOP AS STANDARD						
10 MICRON CELLULOSE						
				£ STERLING	€ EUROS	
ZZ004851	FR-1-10-C10-B-B2-O-C-R1	3/8"BSP	16 L/MIN	£19.23	€ 25.96	R110C10B
ZZ004852	FR-1-10-C10-B-B3-O-C-R1	1/2"BSP	16 L/MIN	£19.23	€ 25.96	R110C10B
ZZ004853	FR-1-10-C10-B-B4-O-C-R1	3/4"BSP	16 L/MIN	£19.23	€ 25.96	R110C10B
ZZ004854	FR-1-11-C10-B-B2-O-C-R1	3/8"BSP	20 L/MIN	£23.90	€ 32.27	R111C10B
ZZ004855	FR-1-11-C10-B-B3-O-C-R1	1/2"BSP	20 L/MIN	£23.90	€ 32.27	R111C10B
ZZ004856	FR-1-11-C10-B-B4-O-C-R1	3/4"BSP	24 L/MIN	£23.90	€ 32.27	R111C10B
ZZ004857	FR-1-20-C10-B-B3-O-C-R1	1/2"BSP	40 L/MIN	£22.24	€ 30.02	R120C10B
ZZ004858	FR-1-20-C10-B-B4-O-C-R1	3/4"BSP	40 L/MIN	£22.24	€ 30.02	R120C10B
ZZ004859	FR-1-22-C10-B-B5-O-C-R1	1"BSP	65 L/MIN	£24.04	€ 32.45	R122C10B
ZZ004860	FR-1-30-C10-B-B5-O-C-R1	1"BSP	80 L/MIN	£34.16	€ 46.12	R130C10B
ZZ004861	FR-1-40-C10-B-B7-O-C-R1	1 1/2"BSP	120 L/MIN	£53.62	€ 72.39	R140C10B
ZZ004862	FR-1-43-C10-B-B7-O-C-R1	1 1/2"BSP	140 L/MIN	£56.49	€ 76.27	R143C10B
ZZ004863	FR-1-50-C10-B-B8-O-C-R1	2"BSP	180 L/MIN	£83.28	€ 112.43	R150C10B
ZZ004864	FR-1-51-C10-B-B8-O-C-R1	2"BSP	240 L/MIN	£93.24	€ 125.87	R151C10B
ZZ004865	FR-1-60-C10-B-B8-O-C-R1	2"BSP	300 L/MIN	£60.10	€ 81.14	R160C10B
ZZ004866	FR-1-64-C10-B-B8-O-C-R1	2"BSP	360 L/MIN	£78.14	€ 105.48	R164C10B
25 MICRON CELLULOSE						
ZZ004867	FR-1-10-C25-B-B2-O-C-R1	3/8"BSP	24 L/MIN	£19.23	€ 25.96	R110C25B
ZZ004868	FR-1-10-C25-B-B3-O-C-R1	1/2"BSP	30 L/MIN	£19.23	€ 25.96	R110C25B
ZZ004869	FR-1-10-C25-B-B4-O-C-R1	3/4"BSP	20 L/MIN	£19.23	€ 25.96	R110C25B
ZZ004870	FR-1-11-C25-B-B2-O-C-R1	3/8"BSP	30 L/MIN	£23.90	€ 32.27	R111C25B
ZZ004871	FR-1-11-C25-B-B3-O-C-R1	1/2"BSP	36 L/MIN	£23.90	€ 32.27	R111C25B
ZZ004872	FR-1-11-C25-B-B4-O-C-R1	3/4"BSP	26 L/MIN	£23.90	€ 32.27	R111C25B
ZZ004972	FR-1-20-C25-B-B3-O-C-R1	1/2"BSP	50 L/MIN	£22.24	€ 30.02	R120C25B
ZZ004973	FR-1-20-C25-B-B4-O-C-R1	3/4"BSP	40 L/MIN	£22.24	€ 30.02	R120C25B
ZZ004974	FR-1-22-C25-B-B5-O-C-R1	1"BSP	60 L/MIN	£24.04	€ 32.45	R122C25B
ZZ004975	FR-1-30-C25-B-B5-O-C-R1	1"BSP	80 L/MIN	£34.16	€ 46.12	R130C25B
ZZ004976	FR-1-40-C25-B-B7-O-C-R1	1 1/2"BSP	140 L/MIN	£53.62	€ 72.39	R140C25B
ZZ004977	FR-1-43-C25-B-B7-O-C-R1	1 1/2"BSP	160 L/MIN	£56.49	€ 76.27	R143C25B
ZZ004978	FR-1-50-C25-B-B8-O-C-R1	2"BSP	260 L/MIN	£83.28	€ 112.43	R150C25B
ZZ004979	FR-1-51-C25-B-B8-O-C-R1	2"BSP	360 L/MIN	£93.24	€ 125.87	R151C25B
ZZ004980	FR-1-60-C25-B-B8-O-C-R1	2"BSP	400 L/MIN	£60.10	€ 81.14	R160C25B
ZZ004981	FR-1-64-C25-B-B8-O-C-R1	2"BSP	450 L/MIN	£78.14	€ 105.48	R164C25B

The given flow rate values refer to applications with mineral oil having viscosity of 30 cSt at working temperature. For applications with different fluid or working conditions, a corrective factor must be applied by referring to the technical information.

OPTIONAL EXTRAS

VITON SEALS	NETT. PRICE	
	£ STERLING	€ EUROS
FR1-10	£3.05	€ 4.11
FR1-20/FR1-30	£7.51	€ 10.13
FR1-40	£12.70	€ 17.15
FR1-50	£31.30	€ 42.25
FR1-60	£31.30	€ 42.25
FILLER CAPS - BUNA		
FR1-10	£4.21	€ 5.68
FR1-20/FR1-30	£4.45	€ 6.00
FR1-40	£4.78	€ 6.46
FR1-50	£11.42	€ 15.41
FR1-60	£11.42	€ 15.41
FILLER CAPS - VITON		
FR1-10/1-20/1-30	£5.24	€ 7.07
FR1-40	£5.82	€ 7.85
FR1-50/1-60	£14.12	€ 19.06
INDICATORS		
R2	£15.87	€ 21.42
R3	£15.63	€ 21.09
R6	£19.62	€ 26.48
R7	£5.49	€ 7.41



TANK TOP RETURN FILTER FR-8



www.flowfitonline.com
TECH. DATA SHEET
FTF04



FILTER HOUSING TECHNICAL INFORMATION

Description: Tank top mounting design return line with reusable or disposable element.

Max flow rate: 150 l/min (40 gpm)

Max working pressure: As per NFPA T 3.10.5.1: 8 Bar (116 psi)

Test pressure: As per NFPA T 3.10.5.1: 12 Bar (174 psi)

Burst pressure: As per NFPA T 3.10.5.1: 16 Bar (232 psi)

Connection Ports: BSP, NPT, SAE J514b

Indicator: Visual and electrical.

Working temperature: -25°C + 100°C (-13°F +212°F)

Materials: •Cover: nylon

•Head: aluminium

•Bowl: nylon

•Seal: Buna-N / Viton®

Fluids compatibility: ISO 2943: Filter assembly compatible with mineral oils and some synthetic or vegetable oils. With other fluid applications please contact Filtrec S.p.A.

FILTER ELEMENT

Filter media: Microglass fiber 3,6,10,25 µm
Cellulose 10,25 µm
Wire mesh 60, 125 µm

Collapse pressure: As per ISO 2941: 10 Bar (145 psi)

By-pass: Return line 1,7 Bar (24.6 psi)

ORDER CODE	DESCRIPTION	PORTS	FLOW RATE	NETT. PRICE	ELEMENT	NETT. PRICE
ALL WITH AIR BREATHER AS STANDARD - R1 INDICATOR ON TOP						
10 MICRON CELLULOSE						
				£ STERLING	€ EUROS	
				£ STERLING	€ EUROS	
ZZ004873	FR-8-10-C10-B-B4-O-10-C-R1	3/4" BSP	16 L/MIN	£93.23	€ 125.85	R110C10B
ZZ004874	FR-8-11-C10-B-B4-O-10-C-R1	3/4" BSP	24 L/MIN	£108.04	€ 145.86	R111C10B
ZZ004875	FR-8-20-C10-B-B6-O-10-C-R1	1 1/4" BSP	50 L/MIN	£126.07	€ 170.19	R120C10B
ZZ004876	FR-8-22-C10-B-B6-O-10-C-R1	1 1/4" BSP	80 L/MIN	£129.24	€ 174.47	R122C10B
ZZ004877	FR-8-30-C10-B-B6-O-10-C-R1	1 1/4" BSP	120 L/MIN	£146.02	€ 197.12	R130C10B
25 MICRON CELLULOSE						
ZZ004878	FR-8-10-C25-B-B4-O-10-C-R1	3/4" BSP	32 L/MIN	£93.23	€ 125.85	R110C25B
ZZ004879	FR-8-11-C25-B-B4-O-10-C-R1	3/4" BSP	48 L/MIN	£108.04	€ 145.86	R111C25B
ZZ004880	FR-8-20-C25-B-B6-O-10-C-R1	1 1/4" BSP	80 L/MIN	£126.07	€ 170.19	R120C25B
ZZ004881	FR-8-22-C25-B-B6-O-10-C-R1	1 1/4" BSP	100 L/MIN	£129.24	€ 174.47	R122C25B
ZZ004882	FR-8-30-C25-B-B6-O-10-C-R1	1 1/4" BSP	140 L/MIN	£146.03	€ 197.13	R130C25B

The given flow rate values refer to applications with mineral oil having viscosity of 30 cSt at working temperature. For applications with different fluid or working conditions, a corrective factor must be applied by referring to the technical information.

OPTIONAL EXTRAS

VITON SEALS	NETT. PRICE
FR-8-10 Series	£14.70 € 19.84
FR-8-20 & 8-30 Series	£5.64 € 7.60
SECONDARY PORT	
FR-8-10 Series	
FR-8-20 & 8-30 Series	£2.59 € 3.51
INDICATOR POSITION	
Options C, D & S	£2.92 € 3.93
INDICATORS	
R2 Pressure switch O.C 1.3 Bar 18.85 O.C	£15.87 € 21.42
R3 Pressure switch C.C 1,3 Bar 18.85 Psi C.C	£15.63 € 21.09
R6 Visual pressure 1.2 Bar 17.4 Psi	£19.62 € 26.48
R7 Pressure vacuum gauge -1 - 5 Bar -14.5-72.5 Psi	£5.49 € 7.41

TANK TOP RETURN FILTER FCR-7



FILTER HOUSING TECHNICAL INFORMATION

Description: Tank top mounting design return line with reusable or disposable element.

Max flow rate: 600 l/min (158 gpm)

Max working pressure: As per NFPA T 3.10.5.1: 8 Bar (116 psi)

Test pressure: As per NFPA T 3.10.5.1: 12 Bar (174 psi)

Burst pressure: As per NFPA T 3.10.5.1: 16 Bar (232 psi)

Connection Ports: BSP, NPT, SAE J154b, SAE J518

Indicator: Visual and electrical.

Working temperature: -25°C +100°C (-13°F +212°F)

By-pass setting: 0,8 or 1,7 Bar (11.6 or 24.6 psi)

Materials: •Cover: nylon - aluminium

•Head: aluminium

•Bowl: carbon steel

•Seal: Buna-N / Viton®

Fluids compatibility: ISO 2943: Filter assembly compatible with mineral oils and some synthetic orvegetable oils. With other fluid applications please contact Filtrec S.p.A.

FILTER ELEMENT

Filter media: Microglass fiber 3, 6, 10, 25 µm

Cellulose 10, 25 µm

Wire mesh 10, 25, 40, 60, 100, 120 µm

Collapse pressure: As per ISO 2941: 10 Bar (145 psi)

ORDER CODE	DESCRIPTION	PORTS	FLOW RATE	NETT. PRICE		ELEMENT	NETT. PRICE	
				£ STERLING	€ EUROS		£ STERLING	€ EUROS
10 MICRON CELLULOSE								
ZZ004796	FCR-7-11-G10-B6-O-V17-O-O-O-C-R1	1 1/4" BSP	36 L/MIN	£79.77	€ 107.69	R711G10	£20.78	€ 28.05
ZZ004797	FCR-7-12-G10-B6-O-V17-O-O-O-C-R1	1 1/4" BSP	50 L/MIN	£82.58	€ 111.48	R712G10	£23.35	€ 31.53
ZZ004798	FCR-7-13-G10-B6-O-V17-O-O-O-C-R1	1 1/4" BSP	80 L/MIN	£88.30	€ 119.21	R713G10	£32.72	€ 44.18
ZZ004799	FCR-7-14-G10-B6-O-V17-O-O-O-C-R1	1 1/4" BSP	120 L/MIN	£96.06	€ 129.66	R714G10	£42.28	€ 57.09
ZZ004800	FCR-7-20-G10-B7-O-V17-O-O-O-C-R1	1 1/2" BSP	120 L/MIN	£165.33	€ 223.19	R720G10	£43.66	€ 58.94
ZZ004801	FCR-7-21-G10-B7-O-V17-O-O-O-C-R1	1 1/2" BSP	160 L/MIN	£171.03	€ 230.89	R721G10	£50.89	€ 68.71
ZZ004802	FCR-7-22-G10-B7-O-V17-O-O-O-C-R1	1 1/2" BSP	240 L/MIN	£191.20	€ 258.12	R722G10	£75.33	€ 101.69
ZZ004803	FCR-7-30-G10-B8-O-V17-O-O-O-C-R1	2" BSP	180 L/MIN	£275.70	€ 372.19	R730G10	£51.76	€ 69.89
ZZ004804	FCR-7-31-G10-B8-O-V17-O-O-O-C-R1	2" BSP	200 L/MIN	£285.06	€ 384.83	R731G10	£63.47	€ 85.69
ZZ004805	FCR-7-32-G10-B8-O-V17-O-O-O-C-R1	2" BSP	320 L/MIN	£307.63	€ 415.30	R732G10	£78.73	€ 106.29
ZZ004806	FCR-7-33-G10-B8-O-V17-O-O-O-C-R1	2" BSP	380 L/MIN	£299.33	€ 404.09	R733G10	£78.96	€ 106.60
25 MICRON FIBREGLASS								
ZZ004807	FCR-7-11-G25-B6-O-V17-O-O-O-C-R1	1 1/4" BSP	90 L/MIN	£79.77	€ 107.69	R711G25	£20.78	€ 28.05
ZZ004808	FCR-7-12-G25-B6-O-V17-O-O-O-C-R1	1 1/4" BSP	120 L/MIN	£82.58	€ 111.48	R712G25	£23.35	€ 31.53
ZZ004809	FCR-7-13-G25-B6-O-V17-O-O-O-C-R1	1 1/4" BSP	160 L/MIN	£88.30	€ 119.21	R713G25	£32.72	€ 44.18
ZZ004810	FCR-7-14-G25-B6-O-V17-O-O-O-C-R1	1 1/4" BSP	180 L/MIN	£96.06	€ 129.66	R714G25	£42.28	€ 57.09
ZZ004811	FCR-7-20-G25-B7-O-V17-O-O-O-C-R1	1 1/2" BSP	160 L/MIN	£165.33	€ 223.19	R720G25	£43.66	€ 58.94
ZZ004812	FCR-7-21-G25-B7-O-V17-O-O-O-C-R1	1 1/2" BSP	200 L/MIN	£171.03	€ 230.89	R721G25	£50.89	€ 68.71
ZZ004813	FCR-7-22-G25-B7-O-V17-O-O-O-C-R1	1 1/2" BSP	280 L/MIN	£191.20	€ 258.12	R722G25	£75.33	€ 101.69
ZZ004814	FCR-7-30-G25-B8-O-V17-O-O-O-C-R1	2" BSP	300 L/MIN	£275.70	€ 372.19	R730G25	£51.76	€ 69.89
ZZ004815	FCR-7-31-G25-B8-O-V17-O-O-O-C-R1	2" BSP	360 L/MIN	£285.06	€ 384.83	R731G25	£63.47	€ 85.69
ZZ004816	FCR-7-32-G25-B8-O-V17-O-O-O-C-R1	2" BSP	460 L/MIN	£307.63	€ 415.30	R732G25	£78.96	€ 106.60
ZZ004817	FCR-7-33-G25-B8-O-V17-O-O-O-C-R1	2" BSP	580 L/MIN	£299.33	€ 404.09	R733G25	£78.96	€ 106.60

The given flow rate values refer to applications with mineral oil having viscosity of 30 cSt at working temperature. For applications with different fluid or working conditions, a corrective factor must be applied by referring to the technical information.

OPTIONAL EXTRAS CONTINUED ON NEXT PAGE

OPTIONAL EXTRAS

VITON SEALS	NETT. PRICE	
	£ STERLING	€ EUROS
FCR-7-11 Series	£47.80	€ 64.53
FCR-7-20 series	£70.01	€ 94.50
FCR-7-30 Series	£91.79	€ 123.91
SECONDARY PORTS		
All series	£5.35	€ 7.21
MAGNETS		
FCR-7-11 Series	£25.91	€ 34.98
FCR-7-20 series	£47.65	€ 64.32
FCR-7-30 Series	£69.14	€ 93.33
DIFFUSERS		
FCR-7-11	£48.66	€ 65.69
FCR-7-12	£48.66	€ 65.69
FCR-7-13	£51.93	€ 70.10
FCR-7-14	£55.38	€ 74.77
FCR-7-20	£80.34	€ 108.46
FCR-7-21	£105.59	€ 142.54
FCR-7-22	£113.91	€ 153.78
FCR-7-30	£81.36	€ 109.83
FCR-7-31	£89.42	€ 120.72
FCR-7-32	£97.56	€ 131.71
FCR-7-33	£107.42	€ 145.01
FILLER CAP		
FCR-7-20 series	£13.85	€ 18.69
FCR-7-30 Series	£16.25	€ 21.93
INDICATORS		
R2 Pressure switch O.C 1.3 Bar 18.85 Psi O.C	£31.73	€ 42.83
R3 Pressure switch C.C 1.3 Bar 18.85 Psi C.C	£31.26	€ 42.20
R7 Pressure vacuum gauge -1.5 Bar -14.5 Bar -72.5Psi	£10.96	€ 14.81



FILTREC LOW PRESSURE INLINE FILTER

INLINE SPIN-ON FILTER FA-4



www.flowfitonline.com
TECH. DATA SHEET
FTF06



FILTER HOUSING TECHNICAL INFORMATION

Description: In line pressure and return spin-on filter assemblies.

Max flow rate: 200 l/min (53 gpm)

Max working pressure: As per NFPA T 3.10.17

Test pressure: As per NFPA T 3.10.17

Burst pressure: As per NFPA T 3.10.17

Pressure fatigue test: As per NFPA T 3.10.17

Connection Ports: BSP, NPT

By-pass setting: 3,5 Bar (50 psi)

Indicator: Visual and electrical

Working temperature: -25°C +120°C (-13°F +248°F)

Materials: •Head: aluminium

•Housing: carbon steel + aluminium

•Seal: Buna-N (NBR) / Viton®

Fluids compatibility: ISO 2943: Filter assembly compatible with mineral oils and some synthetic or vegetable oils. With other fluid applications please contact Filtrac S.p.A.

FILTER ELEMENT

Filter media: Microglass fiber 3, 6, 10, 15, 25, 40 µm

Cellulose 10, 25 µm

Wire mesh 150 µm

Collapse pressure: As per ISO 2941

FA-4- 1 X	FA-4-21
500 psi	348 psi
754 psi	522 psi
1.000 psi	798 psi
0-500 psi*	0-348 psi*

* > 100.000 cycles

FA-4-1X	FA-4-21
15 Bar	12 Bar

ORDER CODE	DESCRIPTION	PORTS	FLOW RATE	NETT. PRICE		ELEMENT	NETT. PRICE	
				£ STERLING	€ EUROS		£ STERLING	€ EUROS
10 MICRON CELLULOSE								
ZZ004883	FA-4-05-C10-B4-D-Z34	3/4" BSP	50 L/MIN	£74.23	€ 100.21	A405C10	£31.48	€ 39.98
ZZ004884	FA-4-11-C10-B4-D-Z34	3/4" BSP	60 L/MIN	£73.93	€ 99.80	A411C10	£39.02	€ 49.55
ZZ004885	FA-4-12-C10-B5-D-Z34	1" BSP	100 L/MIN	£77.17	€ 104.18	A412C10	£40.67	€ 51.65
ZZ004886	FA-4-13-C10-B5-D-Z34	1" BSP	100 L/MIN	£77.34	€ 104.40	A413C10	£44.37	€ 56.34
ZZ004887	FA-4-21-C10-B6-D-Z34	1 1/4" BSP	160 L/MIN	£100.61	€ 135.82	A421C10	£64.48	€ 81.89
10 MICRON FIBREGLASS								
ZZ004888	FA-4-05-G10-B4-D-Z34	3/4" BSP	40 L/MIN	£73.76	€ 99.59	A405G10	£38.78	€ 49.26
ZZ004889	FA-4-11-G10-B4-D-Z34	3/4" BSP	50 L/MIN	£75.34	€ 101.71	A411G10	£41.25	€ 52.37
ZZ004890	FA-4-12-G10-B5-D-Z34	1" BSP	80 L/MIN	£77.52	€ 104.65	A412G10	£44.65	€ 56.70
ZZ004891	FA-4-13-G10-B5-D-Z34	1" BSP	100 L/MIN	£79.78	€ 107.70	A413G10	£48.17	€ 61.17
ZZ004892	FA-4-21-G10-B6-D-Z34	1 1/4" BSP	120 L/MIN	£105.27	€ 142.12	A421G10	£71.78	€ 91.15
25 MICRON FIBREGLASS								
ZZ004893	FA-4-05-G25-B4-D-Z34	3/4" BSP	50 L/MIN	£73.69	€ 99.48	A405G25	£38.78	€ 49.26
ZZ004894	FA-4-11-G25-B4-D-Z34	3/4" BSP	60 L/MIN	£74.85	€ 101.06	A411G25	£41.23	€ 52.37
ZZ004895	FA-4-12-G25-B5-D-Z34	1" BSP	100 L/MIN	£77.52	€ 104.65	A412G25	£41.71	€ 52.96
ZZ004896	FA-4-13-G25-B5-D-Z34	1" BSP	100 L/MIN	£78.90	€ 106.52	A413G25	£46.79	€ 59.42
ZZ004897	FA-4-21-G25-B6-D-Z34	1 1/4" BSP	160 L/MIN	£103.66	€ 139.94	A421G25	£69.27	€ 87.97

The given flow rate values refer to applications with mineral oil having viscosity of 30 cSt at working temperature. For applications with different fluid or working conditions, a corrective factor must be applied by referring to the technical information.

OPTIONAL EXTRAS

INDICATORS	NETT. PRICE	
	£ STERLING	€ EUROS
Z35 Differential electrical switch 2.7 Bar 39 Psi	£2.65	€ 3.56

FILTREC SUCTION LINE FILTERS

SUCTION LINE SPIN-ON FILTER FA-1



www.flowfitonline.com
TECH. DATA SHEET
FTF07



FILTER HOUSING TECHNICAL INFORMATION

Description: In line low-pressure spin-on filter assemblies, suction and return lines.

Max flow rate: 300 l/min (79 gpm)

Max working pressure: As per NFPA T 3.10.17: 12 Bar (175 psi)

Test pressure: As per NFPA T 3.10.17: 15 Bar (217.5 psi)

Burst pressure: As per NFPA T 3.10.17: 20 Bar (290 psi)

Connection Ports: BSP

By-pass setting: suction line 0,25 Bar (3.6 psi) return line 1,7 Bar (24.6 psi)

Indicator: Visual and electrical

Working temperature: 25°C +120°C (-13°F +248°F)

Materials: •Head: aluminium

•Housing: carbon steel

•Seal: Buna-N

Fluids compatibility: ISO 2943: Filter assembly compatible with mineral oils and some synthetic or vegetable oils. With other fluid applications please contact Filtrac S.p.A.

FILTER ELEMENT

Filter media: Microglass fiber 3,6,10,25 µm

Cellulose 10,25 µm

Wire mesh 60, 125 µm

Collapse pressure: as per ISO 2941: 4 Bar (58 psi)

ORDER CODE	DESCRIPTION	PORTS	FLOW RATE	NETT. PRICE	ELEMENT	NETT. PRICE
SUPPLIED WITH VACUUM GAUGE INDICATOR AND BYPASS VALVE						
60 MICRON WIREMESH						
				£ STERLING	€ EUROS	
ZZ004898	FA-1-10-T60-B4-S-S1	3/4" BSP	30 L/MIN	£51.24	€ 69.16	A110T60
ZZ004899	FA-1-11-T60-B4-S-S1	3/4" BSP	35 L/MIN	£52.29	€ 70.59	A111T60
ZZ004900	FA-1-20-T60-B6-S-S1	1 1/4" BSP	95 L/MIN	£70.32	€ 94.93	A120T60
ZZ004901	FA-1-21-T60-B6-S-S1	1 1/4" BSP	100 L/MIN	£76.33	€ 103.04	A121T60
ZZ004902	FA-1-30-T60-B7-S-S1 * 2 elements	1 1/2" BSP	150 L/MIN	£88.95	€ 120.09	A120T60
ZZ004903	FA-1-31-T60-B7-S-S1 * 2 elements	1 1/2" BSP	150 L/MIN	£95.56	€ 129.01	A121T60
ZZ004904	FA-1-40-T60-B7-S-S1 * 2 elements	1 1/2" BSP	150 L/MIN	£232.90	€ 314.42	A120T60
125 MICRON WIREMESH						
ZZ004905	FA-1-10-T125-B4-S-S1	3/4" BSP	30 L/MIN	£38.47	€ 51.93	A110T125
ZZ004906	FA-1-11-T125-B4-S-S1	3/4" BSP	35 L/MIN	£57.14	€ 77.14	A111T125
ZZ004907	FA-1-20-T125-B6-S-S1	1 1/4" BSP	95 L/MIN	£52.29	€ 70.59	A120T125
ZZ004908	FA-1-21-T125-B6-S-S1	1 1/4" BSP	100 L/MIN	£72.12	€ 97.36	A121T125
ZZ004909	FA-1-30-T125-B7-S-S1 * 2 elements	1 1/2" BSP	150 L/MIN	£88.95	€ 120.09	A120T125
ZZ004910	FA-1-31-T125-B7-S-S1 * 2 elements	1 1/2" BSP	150 L/MIN	£163.26	€ 220.41	A121T125
ZZ004911	FA-1-40-T125-B7-S-S1 * 2 elements	1 1/2" BSP	150 L/MIN	£253.17	€ 341.79	A120T125

The given flow rate values refer to applications with mineral oil having viscosity of 30 cSt at working temperature. For applications with different fluid or working conditions, a corrective factor must be applied by referring to the technical information.

OPTIONAL EXTRAS

INDICATORS	NETT. PRICE
	£ STERLING € EUROS
S2 Vacuum switch -0.2 bar setting O.C. (-2.9 psi)	£22.65 € 30.57
S3 Vacuum switch 0.2 bar setting C.C. (-2.9 psi)	£19.14 € 25.84
S4 Vacuum switch view -0.3 bar setting (-4.35 psi)	£10.82 € 14.60

FILTREC SUCTION STRAINERS

SUCTION STRAINERS FS-1



www.flowfitonline.com
TECH. DATA SHEET
FTF08



FILTER HOUSING TECHNICAL INFORMATION

Description: Suction strainers for fluid reservoirs.

Max flow rate: 500 l/min (132 gpm)

Collapse pressure: 14,5 psi

Port Connection: BSP (NPT on request)

By-pass: No by-pass or 0,25 bar (3,6 psi) setting

Working temperature: -25°C + 100°C (-13°F +212°F)

Materials: •Head: nylon

•Endcap: zinc plated carbon steel

•By-pass: NBR

Filter media: Wire mesh 125 µm (60 and 250 µm on request)

Fluids compatibility: ISO 2943: Filter assembly compatible with mineral oils and some synthetic or vegetable oils.

For other fluids please contact our Customer Service (info@filtrec.it).

ORDER CODE	FLOW RATE	THREAD	LENGTH	O/D	NETT. PRICE	
125 MICRON WIREMESH						
					£ STERLING	€ EUROS
FS110B2T125	12 L/MIN	3/8" BSP	91mm	46mm	£9.28	€ 12.53
FS111B3T125	15 L/MIN	1/2" BSP	106mm	46mm	£9.39	€ 12.68
FS120B4T125	30 L/MIN	3/4" BSP	109mm	64mm	£10.72	€ 14.48
FS121B5T125	35 L/MIN	1" BSP	139mm	64mm	£11.20	€ 15.12
FS130B5T125	40 L/MIN	1" BSP	139mm	86mm	£13.71	€ 18.51
FS130B6T125	45 L/MIN	1 1/4" BSP	139mm	86mm	£13.39	€ 18.08
FS130B7T125	50 L/MIN	1 1/2" BSP	139mm	86mm	£13.39	€ 18.08
FS133B7T125	90 L/MIN	1 1/2" BSP	200mm	86mm	£14.91	€ 20.13
FS134B8T125	120 L/MIN	2" BSP	260mm	86mm	£16.68	€ 22.51
FS140B7T125	95 L/MIN	1 1/2" BSP	151mm	150mm	£22.86	€ 30.87
FS140B8T125	100 L/MIN	2" BSP	151mm	150mm	£22.08	€ 29.81
FS142B9T125	180 L/MIN	2 1/2" BSP	212mm	150mm	£25.32	€ 34.17
FS143B10T125	300 L/MIN	3" BSP	272mm	150mm	£28.13	€ 37.98
FS150B2T125	15 L/MIN	3/8" BSP	84mm	54mm	£10.47	€ 14.13
FS150B3T125	20 L/MIN	1/2" BSP	84mm	54mm	£11.12	€ 15.02
FS160B3T125	20 L/MIN	1/2" BSP	104mm	72.5mm	£13.17	€ 17.78
FS160B4T125	30 L/MIN	3/4" BSP	104mm	72.5mm	£13.09	€ 17.67
FS160B5T125	45 L/MIN	1" BSP	104mm	72.5mm	£13.09	€ 17.67
FS160B6T125	55 L/MIN	1 1/4" BSP	104mm	72.5mm	£14.12	€ 19.06
FS162B3T125	25 L/MIN	1/2" BSP	148mm	72.5mm	£14.16	€ 19.12
FS162B4T125	40 L/MIN	3/4" BSP	148mm	72.5mm	£14.89	€ 20.10
FS162B5T125	55 L/MIN	1" BSP	148mm	72.5mm	£14.99	€ 20.24
FS162B6T125	60 L/MIN	1 1/4" BSP	148mm	72.5mm	£14.99	€ 20.24
FS170B5T125	60 L/MIN	1" BSP	155mm	102mm	£19.17	€ 25.88
FS170B6T125	80 L/MIN	1 1/4" BSP	155mm	102mm	£18.21	€ 24.59
FS170B7T125	90 L/MIN	1 1/2" BSP	155mm	102mm	£19.20	€ 25.92
FS170B8T125	100 L/MIN	2" BSP	155mm	102mm	£19.17	€ 25.88
FS173B5T125	60 L/MIN	1" BSP	195mm	102mm	£24.94	€ 33.66
FS173B6T125	90 L/MIN	1 1/4" BSP	195mm	102mm	£24.96	€ 33.70
FS173B7T125	120 L/MIN	1 1/2" BSP	195mm	102mm	£24.96	€ 33.70
FS173B8T125	130 L/MIN	2" BSP	195mm	102mm	£24.16	€ 32.61
FS176B5T125	65 L/MIN	1" BSP	228mm	102mm	£27.59	€ 37.25
FS176B6T125	110 L/MIN	1 1/4" BSP	228mm	102mm	£27.59	€ 37.25
FS176B7T125	130 L/MIN	1 1/2" BSP	228mm	102mm	£27.75	€ 37.47
FS176B8T125	140 L/MIN	2" BSP	228mm	102mm	£27.75	€ 37.47
FS179B5T125	25 L/MIN	1" BSP	110mm	102mm	£19.27	€ 26.01
FS180B8T125	140 L/MIN	2" BSP	202mm	132.5mm	£35.28	€ 47.63
FS180B9T125	160 L/MIN	2 1/2" BSP	202mm	132.5mm	£34.42	€ 46.46
FS180B10T125	200 L/MIN	3" BSP	202mm	132.5mm	£35.28	€ 47.63
FS181B8T125	130 L/MIN	2" BSP	162mm	132.5mm	£42.34	€ 57.15
FS181B10T125	190 L/MIN	3" BSP	162mm	132.5mm	£36.29	€ 48.99

The given flow rate values refer to applications with mineral oil having viscosity of 30 cSt at working temperature. For applications with different fluid or working conditions, a corrective factor must be applied by referring to the technical information.

FILTREC SUCTION FILTERS

TANK TOP SUCTION FILTERS FS-7



www.flowfitonline.com
TECH. DATA SHEET
FTF09



FILTER HOUSING TECHNICAL INFORMATION

Description: Side tank suction filters mounted below oil level. No need to drain oil from tank when replacing element.

Max flow rate: 160 l/min (42 gpm)

Indicator: Visual or electrical

By-pass setting: No by-pass or 0,3 Bar setting (4,35 psi)

Working temperature: -25°C + 100°C (-13°F +212°F)

Materials:

- Cover: nylon
- Housing: aluminium
- Seal: Buna-N / Viton®

Fluids compatibility: ISO 2943: Filter assembly compatible with mineral oils and some synthetic or vegetable oils. With other fluid applications please contact Filtrec S.p.A.

FILTER ELEMENT

Filter media: Cellulose 10, 25 µm
Wire mesh 60, 125, 250 µm

ORDER CODE	DESCRIPTION	PORTS	FLOW RATE	NETT. PRICE		ELEMENT	NETT. PRICE		
10 MICRON CELLULOSE									
				£ STERLING	€ EUROS			£ STERLING	€ EUROS
ZZ004912	FS-7-41-C10-B7-0-B-O-P-S5	1 1/2" BSP	50 L/MIN	£147.51	€ 187.34	S741C10	£37.85	€ 51.11	
125 MICRON WIREMESH									
ZZ004913	FS-7-41-T125-B7-0-B-O-P-S5	1 1/2" BSP	100 L/MIN	£153.73	€ 207.54	S741T125	£43.45	€ 55.18	

The given flow rate values refer to applications with mineral oil having viscosity of 30 cSt at working temperature. For applications with different fluid or working conditions, a corrective factor must be applied by referring to the technical information.

OPTIONAL EXTRAS

		NETT. PRICE	
		£ STERLING	€ EUROS
Secondary port		£11.11	€ 15.00
Magnet		£2.41	€ 3.25
INDICATORS			
S6 Vacuum switch -0.2 Bar setting		£51.93	€ 70.10

FILTREC MEDIUM PRESSURE FILTERS

INLINE MEDIUM PRESSURE FILTERS F100 MAX WORKING UPTO 100BAR



www.flowfitonline.com
TECH. DATA SHEET
FTF10



FILTER HOUSING TECHNICAL INFORMATION

Description: In line medium pressure filter assembly with cleanable or disposable elements

Max flow rate: 400 l/min (105.5 gpm)

Max working pressure: As per NFPA T 3.10.5.1:

Test pressure: As per NFPA T 3.10.5.1:

Burst pressure: As per NFPA T 3.10.5.1:

F100-XD040/063/100	F100-XD160/250/400
100 Bar (1450 psi)	80 Bar (1160 psi)
150 Bar (2176 psi)	120 Bar (1740 psi)
300 Bar (4351 psi)	200 Bar (2900 psi)

Connection Ports: BSP, NPT

By-pass: No By-pass or 6 Bar (87 psi) setting

Working temperature: -25°C +120°C (-13°F +248°F)

Materials: •Head: aluminium

•Bowl: aluminium

•Seal: Buna-N / Viton®

Fluids compatibility: ISO 2943: Filter assembly compatible with mineral oils and some synthetic or vegetable oils. With other fluid applications please contact Filtrac S.p.A.

FILTER ELEMENT

Filter media: Filter element dimensions according to DIN 24550
Microglass fiber 3, 6, 10, 15, 25 µ, cellulose 10 µ

Collapse pressure: As per ISO 2941: 21 Bar (305 psi) and 210 Bar (3045 psi)

ORDER CODE	DESCRIPTION	PORTS	FLOW RATE	NETT. PRICE	ELEMENT	NETT. PRICE
COMPLETE WITH LOW COLLAPSE ELEMENT, VISUAL INDICATOR AND BYPASS						
10 MICRON FIBREGLASS						
				£ STERLING	€ EUROS	£ STERLING
				€ EUROS		€ EUROS
ZZ004914	F100-XD-040-G10-A-B5-D-S-Z30	1" BSP	40 L/MIN	£166.65	€ 224.99	XD040G10A
ZZ004915	F100-XD-063-G10-A-B5-D-S-Z30	1" BSP	60 L/MIN	£174.48	€ 235.56	XD063G10A
ZZ004916	F100-XD-100-G10-A-B5-D-S-Z30	1" BSP	100 L/MIN	£188.99	€ 255.14	XD100G10A
ZZ004917	F100-XD-160-G10-A-B7-D-S-Z30	1 1/2" BSP	160 L/MIN	£182.95	€ 246.99	XD160G10A
ZZ004918	F100-XD-250-G10-A-B7-D-S-Z30	1 1/2" BSP	250 L/MIN	£188.85	€ 254.94	XD250G10A
ZZ004919	F100-XD-400-G10-A-B7-D-S-Z30	1 1/2" BSP	400 L/MIN	£243.37	€ 328.55	XD400G10A
25 MICRON FIBREGLASS						
ZZ004920	F100-XD-040-G25-A-B5-D-S-Z30	1" BSP	60 L/MIN	£166.65	€ 224.99	XD040G25A
ZZ004921	F100-XD-063-G25-A-B5-D-S-Z30	1" BSP	100 L/MIN	£174.48	€ 235.56	XD063G25A
ZZ004922	F100-XD-100-G25-A-B5-D-S-Z30	1" BSP	160 L/MIN	£188.99	€ 255.14	XD100G25A
ZZ004923	F100-XD-160-G25-A-B7-D-S-Z30	1 1/2" BSP	200 L/MIN	£183.46	€ 247.67	XD160G25A
ZZ004924	F100-XD-250-G25-A-B7-D-S-Z30	1 1/2" BSP	300 L/MIN	£188.85	€ 254.94	XD250G25A
ZZ004925	F100-XD-400-G25-A-B7-D-S-Z30	1 1/2" BSP	400 L/MIN	£243.37	€ 328.55	XD400G25A

The given flow rate values refer to applications with mineral oil having viscosity of 30 cSt at working temperature. For applications with different fluid or working conditions, a corrective factor must be applied by referring to the technical information.

OPTIONAL EXTRAS

	NETT. PRICE
VITON SEALS	
	£ STERLING
F100-XD040, XD063 & XD100	£7.77
F100-XD160, XD250 & XD400	£7.77
	€ EUROS
	€ 10.49
	€ 10.49
INDICATORS	
Z31 Differential electrical visual 5 Bar 7.2 Psi	£36.94
Z32 Differential visual switch 8 Bar 116 Psi	£26.83
Z33 Differential electrical visual 8 Bar 116 Psi	£36.94
	€ 49.86
	€ 36.22
	€ 49.86

INLINE MEDIUM PRESSURE FILTERS FD-3 UPTO 110BAR



www.flowfitonline.com
TECH. DATA SHEET
FTF11



FILTER HOUSING TECHNICAL INFORMATION

Description: In line medium pressure filter assembly with reusable or disposable element.

Max flow rate: 40 l/min (10,5 gpm)

Max working pressure: As per NFPA T 3.10.5.1: 110 Bar (1595 psi)

Test pressure: As per NFPA T 3.10.5.1: 160 Bar (2320 psi)

Burst pressure: As per NFPA T 3.10.5.1: 330 Bar (4785 psi)

Fatigue test: > 1.000.000 cycles 0-80 Bar, as per NFPA T 3.10.5.1

Connection Ports: BSP, NPT

By-pass: No by-pass or 6 Bar (87 psi) setting

Indicator: Differential visual and differential electrical visual , 5 Bar (72.5 psi) setting.

Working temperature: -25°C + 120°C (-13°F +248°F)

Materials: •Head: aluminium

•Bowl: aluminium

•Seal: Buna-N / Viton®

Fluids compatibility: ISO 2943: Filter assembly compatible with mineral oils and some synthetic or applications please contact Filtrac S.p.A.vegetable oils. With other fluid

FILTER ELEMENT

Filter media: Microglass fiber 3,6,10,25 µm

Cellulose 10,25 µm

Wire mesh 10, 25, 60, 125 µm

Collapse pressure: as per ISO 2941: 21 Bar (305 psi)

ORDER CODE	DESCRIPTION	PORTS	FLOW RATE	NETT. PRICE		ELEMENT	NETT. PRICE	
COMPLETE WITH LOW COLLAPSE ELEMENT, VISUAL INDICATOR AND BYPASS								
10 MICRON CELLULOSE								
				£ STERLING	€ EUROS		£ STERLING	€ EUROS
ZZ004926	FD-3-10-C10-A-B3-D-T-Z12	1/2" BSP	40 L/MIN	£96.18	€ 129.85	D310C10A	£17.28	€ 23.33
ZZ004927	FD-3-11-C10-A-B3-D-T-Z12	1/2" BSP	50 L/MIN	£115.05	€ 155.33	D311C10A	£19.83	€ 26.77
10 MICRON FIBREGLASS								
ZZ004928	FD-3-10-G10-A-B3-D-T-Z12	1/2" BSP	30 L/MIN	£106.36	€ 143.59	D310G10A	£19.83	€ 26.77
ZZ004929	FD-3-11-G10-A-B3-D-T-Z12	1/2" BSP	40 L/MIN	£123.67	€ 166.96	D311G10A	£28.85	€ 38.94
25 MICRON FIBREGLASS								
ZZ004930	FD-3-10-G25-A-B3-D-T-Z12	1/2" BSP	35 L/MIN	£103.23	€ 139.36	D310G25A	£18.04	€ 24.34
ZZ004931	FD-3-11-G25-A-B3-D-T-Z12	1/2" BSP	45 L/MIN	£122.01	€ 164.71	D311G25A	£24.04	€ 32.45

The given flow rate values refer to applications with mineral oil having viscosity of 30 cSt at working temperature. For applications with different fluid or working conditions, a corrective factor must be applied by referring to the technical information.

OPTIONAL EXTRAS

	NETT. PRICE	
	£ STERLING	€ EUROS
Z13 differential electrical visual indicator 5 Bar 72.5 Psi	£36.94	€ 49.86

INLINE MEDIUM PRESSURE FILTERS F160 UPTO 160BAR



www.flowfitonline.com
TECH. DATA SHEET
FTF12



FILTER HOUSING TECHNICAL INFORMATION

Description: In line medium pressure filter assembly with cleanable or disposable elements

Max flow rate: 400 l/min (105.5 gpm)

Max working pressure: As per NFPA T 3.10.5.1: 160 Bar (2320 psi)

Test pressure: As per NFPA T 3.10.5.1: 240 Bar (3480 psi)

Burst pressure: As per NFPA T 3.10.5.1: 480 Bar (6962 psi)

Connection Ports: BSP, NPT

By-pass: No By-pass or 6 Bar (87 psi) setting

Working temperature: -25°C + 120°C (-13°F +248°F)

Materials:

- Head: Cast iron
- Bowl: Aluminium
- Seal: Buna-N / Viton®

Fluids compatibility: ISO 2943: Filter assembly compatible with mineral oils and some synthetic or vegetable oils. With other fluid applications please contact Filtrac S.p.A.

FILTER ELEMENT

Filter media: Filter element dimensions according to DIN 24550
Microglass fiber 3, 6, 10, 15, 25 µ, cellulose 10 µ

Collapse pressure: As per ISO 2941: 21 Bar (305 psi) and 210 Bar (3045 psi)

ORDER CODE	DESCRIPTION	PORTS	FLOW RATE	NETT. PRICE		ELEMENT	NETT. PRICE	
				£ STERLING	€ EUROS		£ STERLING	€ EUROS
COMPLETE WITH LOW COLLAPSE ELEMENTS, VISUAL INDICATOR AND BYPASS VALVE								
10 MICRON FIBREGLASS								
ZZ004932	F160-XD040-G10-A-B5-D-S-Z30	1" BSP	40 L/MIN	£155.11	€ 209.40	XD040G10A	£48.12	€ 64.97
ZZ004933	F160-XD063-G10-A-B5-D-S-Z30	1" BSP	60 L/MIN	£160.57	€ 216.78	XD063G10A	£50.59	€ 68.29
ZZ004934	F160-XD100-G10-A-B5-D-S-Z30	1" BSP	100 L/MIN	£170.56	€ 230.27	XD100G10A	£56.28	€ 75.98
ZZ004935	F160-XD160-G10-A-B7-D-S-Z30	1 1/2" BSP	160 L/MIN	£261.45	€ 352.94	XD160G10A	£68.52	€ 92.50
ZZ004936	F160-XD250-G10-A-B7-D-S-Z30	1 1/2" BSP	250 L/MIN	£276.51	€ 373.29	XD250G10A	£68.52	€ 92.50
ZZ004937	F160-XD400-G10-A-B7-D-S-Z30	1 1/2" BSP	400 L/MIN	£350.71	€ 473.46	XD400G10A	£124.26	€ 167.76
25 MICRON FIBREGLASS								
ZZ004938	F160-XD063-G25-A-B3-D-S-Z30	1/2" BSP	60 L/MIN	£160.57	€ 216.78	XD063G25A	£50.59	€ 68.29
ZZ004939	F160-XD063-G25-A-B5-D-S-Z30	1" BSP	100 L/MIN	£160.57	€ 216.78	XD063G25A	£50.59	€ 68.29
ZZ004940	F160-XD100-G25-A-B5-D-S-Z30	1" BSP	160 L/MIN	£170.56	€ 230.27	XD100G25A	£56.28	€ 75.98
ZZ004941	F160-XD160-G25-A-B7-D-S-Z30	1 1/2" BSP	200 L/MIN	£261.45	€ 352.94	XD160G25A	£68.52	€ 92.50
ZZ004942	F160-XD250-G25-A-B7-D-S-Z30	1 1/2" BSP	300 L/MIN	£276.51	€ 373.29	XD250G25A	£68.52	€ 92.50
ZZ004943	F160-XD400-G25-A-B7-D-S-Z30	1 1/2" BSP	400 L/MIN	£463.06	€ 625.13	XD400G25A	£124.26	€ 167.76

The given flow rate values refer to applications with mineral oil having viscosity of 30 cSt at working temperature. For applications with different fluid or working conditions, a corrective factor must be applied by referring to the technical information.

OPTIONAL EXTRAS

INDICATORS	NETT. PRICE	
	£ STERLING	€ EUROS
Z31 Differential electrical visual 5 Bar 72.5Psi	£36.94	€ 49.86
Z32 Differential visual switch 8 Bar 116 Psi	£26.83	€ 36.22
Z33 Differential electrical visual 8 Bar 116 Psi	£36.94	€ 49.86

FILTREC HIGH PRESSURE FILTERS

INLINE HIGH PRESSURE FILTERS F280-D1 UPTO 280BAR



www.flowfitonline.com
TECH. DATA SHEET
FTF13



FILTER HOUSING TECHNICAL INFORMATION

Description: In line high pressure filter assembly with cleanable or disposable elements

Max flow rate: 400 l/min (105 gpm)

Max working pressure: As per NFPA T 3.10.5.1: 280 Bar (4060 psi)

Test pressure: As per NFPA T 3.10.5.1: 420 Bar (6091,5 psi)

Burst pressure: As per NFPA T 3.10.5.1: 840 Bar (12180 psi)

Connection Ports: BSP, NPT, Metric

By-pass: No by-pass or 6 Bar (87 psi) setting

Working temperature: -25°C + 120°C (-13°F +248°F)

Materials: •Head: cast iron

•Bowl: extruded steel

•Seal: Buna-N / Viton®

Fluids compatibility: ISO 2943: Filter assembly compatible with mineral oils and some synthetic or vegetable oils. With other fluid applications please contact Filtrac S.p.A.

FILTER ELEMENT

Filter media: Microglass fiber 3, 6, 10, 15, 25 µm, cellulose 10 µm

Collapse pressure: As per ISO 2941: 21 Bar (305 psi) and 210 Bar (3045 psi)

ORDER CODE	DESCRIPTION	PORTS	FLOW RATE	NETT. PRICE		ELEMENT	NETT. PRICE		
COMPLETE WITH LOW COLLAPSE ELEMENTS, VISUAL INDICATOR AND BYPASS VALVE									
				£ STERLING	€ EUROS			£ STERLING	€ EUROS
10 MICRON FIBREGLASS									
ZZ004944	F280-D120-G10-A-B5-D-S-Z30	1" BSP	60 L/MIN	£136.97	€ 184.91	D120G10A	£33.37	€ 45.06	
ZZ004945	F280-D124-G10-A-B5-D-S-Z30	1" BSP	80 L/MIN	£145.72	€ 196.72	D124G10A	£39.00	€ 52.65	
ZZ004946	F280-D121-G10-A-B5-D-S-Z30	1" BSP	100 L/MIN	£153.28	€ 206.93	D121G10A	£46.52	€ 62.80	
ZZ004947	F280-D140-G10-A-B7-D-S-Z30	1 1/2" BSP	120 L/MIN	£295.53	€ 398.96	D140G10A	£49.41	€ 66.70	
ZZ004948	F280-D141-G10-A-B7-D-S-Z30	1 1/2" BSP	200 L/MIN	£334.16	€ 451.13	D141G10A	£68.02	€ 91.82	
ZZ004949	F280-D142-G10-A-B7-D-S-Z30	1 1/2" BSP	240 L/MIN	£451.47	€ 609.49	D142G10A	£109.78	€ 148.21	
25 MICRON FIBREGLASS									
ZZ004950	F280-D120-G25-A-B5-D-S-Z30	1" BSP	70 L/MIN	£136.03	€ 183.63	D120G25A	£32.17	€ 43.43	
ZZ004951	F280-D124-G25-A-B5-D-S-Z30	1" BSP	90 L/MIN	£145.72	€ 196.72	D124G25A	£39.00	€ 52.65	
ZZ004952	F280-D121-G25-A-B5-D-S-Z30	1" BSP	110 L/MIN	£151.12	€ 204.02	D121G25A	£43.80	€ 59.14	
ZZ004953	F280-D140-G25-A-B7-D-S-Z30	1 1/2" BSP	130 L/MIN	£291.62	€ 393.68	D140G25A	£44.51	€ 60.09	
ZZ004954	F280-D141-G25-A-B7-D-S-Z30	1 1/2" BSP	210 L/MIN	£334.16	€ 451.13	D141G25A	£68.02	€ 91.82	
ZZ004955	F280-D142-G25-A-B7-D-S-Z30	1 1/2" BSP	250 L/MIN	£450.28	€ 607.89	D142G25A	£108.30	€ 146.20	

The given flow rate values refer to applications with mineral oil having viscosity of 30 cSt at working temperature. For applications with different fluid or working conditions, a corrective factor must be applied by referring to the technical information.

OPTIONAL EXTRAS

INDICATORS	NETT. PRICE	
	£ STERLING	€ EUROS
Z31 Differential electrical visual 5 Bar 72.5Psi	£36.94	€ 49.86
Z32 Differential visual switch 8 Bar 116 Psi	£26.83	€ 36.22
Z33 Differential electrical visual 8 Bar 116 Psi	£36.94	€ 49.86

CETOP 3 AND 5 HIGH PRESSURE FILTERS FDM-1 UPTO 315 BAR



www.flowfitonline.com
TECH. DATA SHEET
FTF14



FILTER HOUSING TECHNICAL INFORMATION

Description: Modulare in line high pressure filter assembly with cleanable or disposable elements

Max flow rate: 15/45 l/min (4/12 gpm)

Max working pressure: As per NFPA T 3.10.5.1: 315 Bar (4560 psi)

Test pressure: As per NFPA T 3.10.5.1: 400 Bar (5800 psi)

Burst pressure: As per NFPA T 3.10.5.1: 945 Bar (13700 psi)

Port connections: CETOP - 03/05

Indicator: Visual and visual electric differential indicator setting 5 and 8 bar (72,5 and 116 psi)

By-pass valve: Without

Working temperature: -25°C + 120°C (-13°F +248°F)

Materials: •Head: steel

•Cover: steel

•Seal: Buna-N / Viton®

Fluids compatibility: ISO 2943: Filter assembly compatible with mineral oils and some synthetic or vegetable oils. With other fluid applications please contact Filtrac S.p.A.

FILTER ELEMENT

Filter element: Microglass fiber 3,6,10,25 µm
Wire mesh 10, 25 µm

Collapse pressure: As for ISO 2941: 21/210 Bar

ORDER CODE	DESCRIPTION	FLOW RATE	NETT. PRICE		ELEMENT	NETT. PRICE	
COMPLETE WITH HIGH COLLAPSE ELEMENTS, VISUAL INDICATOR AND BYPASS VALVE							
3 MICRON FIBREGLASS							
			£ STERLING	€ EUROS		£ STERLING	€ EUROS
ZZ004956	FDM-1-08-G03-B-D-Z12	6 L/MIN	£170.59	€ 230.29	D108G03B	£65.99	€ 89.08
ZZ004957	FDM-1-11-G03-B-D-Z12	18 L/MIN	£244.07	€ 329.50	D111G03B	£70.48	€ 95.15
6 MICRON FIBREGLASS							
ZZ004958	FDM-1-08-G06-B-D-Z12	8 L/MIN	£170.59	€ 230.29	D108G06B	£65.99	€ 89.08
ZZ004959	FDM-1-11-G06-B-D-Z12	24 L/MIN	£244.07	€ 329.50	D111G06B	£70.48	€ 95.15
10 MICRON FIBREGLASS							
ZZ004960	FDM-1-08-G10-B-D-Z12	8 L/MIN	£162.18	€ 218.95	D108G10B	£53.92	€ 72.79
ZZ004961	FDM-1-11-G10-B-D-Z12	24 L/MIN	£233.19	€ 314.81	D111G10B	£54.85	€ 74.04

The given flow rate values refer to applications with mineral oil having viscosity of 30 cSt at working temperature. For applications with different fluid or working conditions, a corrective factor must be applied by referring to the technical information.

OPTIONAL EXTRAS

VITON SEALS	NETT. PRICE	
	£ STERLING	€ EUROS
FDM-1-08	£11.25	€ 15.18
FDM-1-11	£14.43	€ 19.47
INDICATORS		
Z13 Differential visual and electrical 5 Bar 72.5 Psi	£73.86	€ 99.71
Z17 Differential visual switch 8 Bar 116 Psi	£53.67	€ 72.45
Z18 Differential visual and electrical 8 Bar 116 Psi	£72.12	€ 97.36

INLINE HIGH PRESSURE FILTERS F420-D1 SERIES



www.flowfitonline.com
TECH. DATA SHEET
FTF15



TECHNICAL INFORMATION

Pressure: Max working 420 bar (6000 psi) (acc. to NFPA T 3.10.5.1)
Burst 1260 bar (18300 psi) (acc. to NFPA T 3.10.5.1)

Connection Ports: 1/2"+1 1/2" BSP (other thread options on request)
3/4"+1 1/2" SAE J518-6000

Materials: Head: cast iron Bowl: extruded steel Seal: Buna-N (FKM on request)

By-pass: No by-pass or 6 bar (90 psi) setting

Filter Media: Microglass fiber 4,5 – 7 – 12 – 18 - 27 µm(c) (acc. to ISO 16889)
Cellulose 10 - 25 µm(c) (acc. to ISO 16889)

Differential collapse pressure: 21 bar (300 psi) or 210 bar (3000 psi) (acc. to ISO 2941)
The Filtrac elements are tested also according to ISO 2942 and ISO 23181

Working temperature: -25°C +120°C (-13°F +248°F)

Fluid compatibility (acc. to ISO 2943): Full with HH-HL-HM-HV (acc. to ISO 6743/4).

CODE	DESCRIPTION	PORTS	MAX PRESSURE	FLOW RATE	NETT. PRICE		ELEMENT	NETT. PRICE	
					£ STERLING	€ EUROS		£ STERLING	€ EUROS
3 MICRON FIBREGLASS									
ZZ005634	F420-D1-10-G03-A-B-B3-D-T-Z30	1/2"	420 BAR	10LPM	£131.86	€ 178.02	D110G03A	£28.72	€ 38.76
ZZ005638	F420-D1-10-G03-A-B-B4-D-T-Z30	3/4"	420 BAR	12LPM	£126.17	€ 170.33	D110G03A	£28.72	€ 38.76
ZZ005642	F420-D1-11-G03-A-B-B3-D-T-Z30	1/2"	420 BAR	15LPM	£143.69	€ 193.98	D111G03A	£26.35	€ 35.58
ZZ005647	F420-D1-11-G03-A-B-B4-D-T-Z30	3/4"	420 BAR	18LPM	£144.15	€ 194.59	D111G03A	£26.35	€ 35.58
ZZ005654	F420-D1-12-G03-A-B-B4-D-T-Z30	3/4"	420 BAR	35LPM	£163.22	€ 220.34	D112G03A	£44.40	€ 59.94
ZZ005658	F420-D1-12-G03-A-B-B3-D-T-Z30	1/2"	420 BAR	20LPM	£158.79	€ 214.37	D112G03A	£44.40	€ 59.94
ZZ005662	F420-D1-20-G03-A-B-B4-D-T-Z30	3/4"	420 BAR	30LPM	£176.31	€ 238.02	D120G03A	£37.84	€ 51.08
ZZ005668	F420-D1-20-G03-A-B-B5-D-T-Z30	3/4"	420 BAR	40LPM	£161.67	€ 218.25	D120G03A	£37.84	€ 51.08
ZZ006605	F420-D1-40-G03-A-B-B5-D-T-Z30	1"	420 BAR	45LPM	£255.44	€ 344.85	D140G03A	£51.79	€ 69.92
ZZ006609	F420-D1-40-G03-A-B-B6-D-T-Z30	1 1/4"	420 BAR	65LPM	£280.26	€ 378.35	D140G03A	£51.79	€ 69.92
ZZ006613	F420-D1-40-G03-A-B-B7-D-T-Z30	1 1/2"	420 BAR	80LPM	£290.76	€ 392.53	D140G03A	£51.79	€ 69.92
6 MICRON FIBREGLASS									
ZZ005635	F420-D1-10-G06-A-B-B3-D-T-Z30	1/2"	420 BAR	18LPM	£133.57	€ 180.33	D110G06A	£28.72	€ 38.76
ZZ005639	F420-D1-10-G06-A-B-B4-D-T-Z30	3/4"	420 BAR	25LPM	£127.90	€ 172.67	D110G06A	£28.72	€ 38.76
ZZ005643	F420-D1-11-G06-A-B-B3-D-T-Z30	1/2"	420 BAR	21LPM	£144.51	€ 195.10	D111G06A	£26.35	€ 35.58
ZZ005651	F420-D1-11-G06-A-B-B4-D-T-Z30	3/4"	420 BAR	30LPM	£144.97	€ 195.71	D111G06A	£26.35	€ 35.58
ZZ005655	F420-D1-12-G06-A-B-B4-D-T-Z30	3/4"	420 BAR	50LPM	£159.13	€ 214.81	D112G06A	£44.40	€ 59.94
ZZ005659	F420-D1-12-G06-A-B-B3-D-T-Z30	1/2"	420 BAR	30LPM	£151.45	€ 204.45	D112G06A	£44.40	€ 59.94
ZZ005663	F420-D1-20-G06-A-B-B4-D-T-Z30	3/4"	420 BAR	50LPM	£173.90	€ 234.76	D120G06A	£32.82	€ 44.30
ZZ005669	F420-D1-20-G06-A-B-B5-D-T-Z30	1"	420 BAR	55LPM	£159.25	€ 214.98	D120G06A	£32.82	€ 44.30
ZZ006606	F420-D1-40-G06-A-B-B5-D-T-Z30	1"	420 BAR	70LPM	£249.58	€ 336.94	D140G06A	£51.79	€ 69.92
ZZ006610	F420-D1-40-G06-A-B-B6-D-T-Z30	1 1/4"	420 BAR	95LPM	£274.40	€ 370.43	D140G06A	£51.79	€ 69.92
ZZ006614	F420-D1-40-G06-A-B-B7-D-T-Z30	1 1/2"	420 BAR	120LPM	£284.89	€ 384.61	D140G06A	£51.79	€ 69.92
10 MICRON FIBREGLASS									
ZZ005636	F420-D1-10-G10-A-B-B3-D-T-Z30	1/2"	420 BAR	20LPM	£133.40	€ 180.09	D110G10A	£28.40	€ 38.35
ZZ005640	F420-D1-10-G10-A-B-B4-D-T-Z30	3/4"	420 BAR	40LPM	£127.73	€ 172.44	D110G10A	£28.40	€ 38.35
ZZ005644	F420-D1-11-G10-A-B-B3-D-T-Z30	1/2"	420 BAR	30LPM	£146.58	€ 197.89	D111G10A	£26.35	€ 35.58
ZZ005652	F420-D1-11-G10-A-B-B4-D-T-Z30	3/4"	420 BAR	50LPM	£146.51	€ 197.79	D111G10A	£26.35	€ 35.58
ZZ005656	F420-D1-12-G10-A-B-B4-D-T-Z30	3/4"	420 BAR	65LPM	£156.38	€ 211.11	D112G10A	£40.08	€ 54.10
ZZ005660	F420-D1-12-G10-A-B-B3-D-T-Z30	1/2"	420 BAR	50LPM	£151.82	€ 204.95	D112G10A	£40.08	€ 54.10
ZZ005664	F420-D1-20-G10-A-B-B4-D-T-Z30	3/4"	420 BAR	65LPM	£166.15	€ 224.29	D120G10A	£33.37	€ 45.06
ZZ005670	F420-D1-20-G10-A-B-B5-D-T-Z30	1"	420 BAR	80LPM	£151.49	€ 204.51	D120G10A	£33.37	€ 45.06
ZZ006607	F420-D1-40-G10-A-B-B5-D-T-Z30	1"	420 BAR	95LPM	£244.30	€ 329.80	D140G10A	£49.41	€ 66.70
ZZ006611	F420-D1-40-G10-A-B-B6-D-T-Z30	1 1/4"	420 BAR	130LPM	£269.11	€ 363.30	D140G10A	£49.41	€ 66.70
ZZ006615	F420-D1-40-G10-A-B-B7-D-T-Z30	1 1/2"	420 BAR	155LPM	£279.61	€ 377.47	D140G10A	£51.45	€ 69.45
25 MICRON FIBREGLASS									
ZZ005637	F420-D1-10-G25-A-B-B3-D-T-Z30	1/2"	420 BAR	22LPM	£128.50	€ 173.47	D110G25A	£22.96	€ 31.00
ZZ005641	F420-D1-10-G25-A-B-B4-D-T-Z30	3/4"	420 BAR	55LPM	£128.34	€ 173.25	D110G25A	£22.96	€ 31.00
ZZ005645	F420-D1-11-G25-A-B-B3-D-T-Z30	1/2"	420 BAR	35LPM	£142.73	€ 192.69	D111G25A	£25.01	€ 33.77
ZZ005653	F420-D1-11-G25-A-B-B4-D-T-Z30	3/4"	420 BAR	65LPM	£144.12	€ 194.56	D111G25A	£25.01	€ 33.77
ZZ005657	F420-D1-12-G25-A-B-B4-D-T-Z30	3/4"	420 BAR	100LPM	£154.08	€ 208.02	D112G25A	£36.20	€ 48.87
ZZ005661	F420-D1-12-G25-A-B-B3-D-T-Z30	1/2"	420 BAR	80LPM	£146.42	€ 197.65	D112G25A	£36.20	€ 48.87
ZZ005665	F420-D1-20-G25-A-B-B4-D-T-Z30	3/4"	420 BAR	95LPM	£168.23	€ 227.11	D120G25A	£32.17	€ 43.43
ZZ006604	F420-D1-20-G25-A-B-B5-D-T-Z30	1"	420 BAR	110LPM	£153.58	€ 207.33	D120G25A	£32.17	€ 43.43
ZZ006608	F420-D1-40-G25-A-B-B5-D-T-Z30	1"	420 BAR	140LPM	£246.01	€ 332.11	D140G25A	£44.51	€ 60.09
ZZ006612	F420-D1-40-G25-A-B-B6-D-T-Z30	1 1/4"	420 BAR	165LPM	£270.82	€ 365.61	D140G25A	£44.51	€ 60.09
ZZ006616	F420-D1-40-G25-A-B-B7-D-T-Z30	1 1/2"	420 BAR	190LPM	£281.39	€ 379.88	D140G25A	£44.51	€ 60.09

FILTREC FILTERS

FILTREC

ACCESSORIES

PRODUCT	PAGE
CLOGGING INDICATORS	386
ELECTRIC LEVEL INDICATORS	397
ELECTRIC FLOATING LEVEL GAUGES	399
SIGHT GLASSES, PLUGS AND BREATHERS	405



QUALITY PRODUCTS



FREE ADVICE



CLOGGING INDICATORS

www.flowfitonline.com
TECH. DATA SHEET
FA01



TECHNICAL INFORMATION

Clogging indicators controlling and determining the moment when filter change should take place are available for the entire FILTREC assembly range.

ABSOLUTE pressure indicators

They measure the pressure in the filter vs the atmospheric one. Usually they are used on return line filters discharging in tank.

Clogging indicators

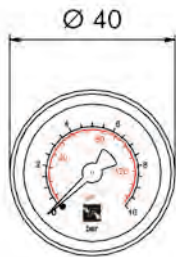
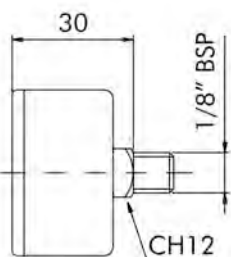
- **Visual:** The indicator is provided with a bar and a psi scale. The pointer indicates clog value.
- **Electrical:** Electrical signal indicates clog value. It is used in hard to reach areas, the signal is visible on a control panel through a led.

DIFFERENTIAL pressure indicators

Differential pressure indicators measure the difference in pressure between the dirty and the clean side of the filter. They are not affected by atmospheric pressure. Usually they are used on pressure and return line filters.

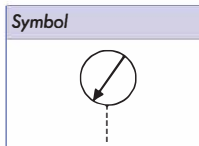
Clogging indicators:

- **Visual:** A colored indicator reports when pressure setting is reached:
GREEN = differential pressure minor than setting value
RED = differential pressure major than setting value
- **Electrical:** An electrical signal indicates when admissible differential pressure is reached. It is used in hard to reach areas, the signal is visible on a control panel through a luminous led.
- **Visual Electrical:** Both colored indicator and electrical signal indicate when pressure setting is reached.



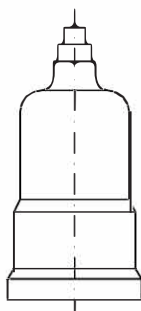
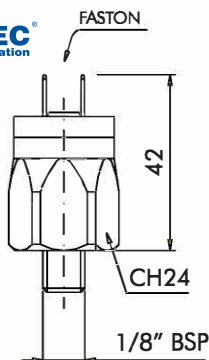
PRESSURE GAUGE INDICATOR

- Housing in black ABS material



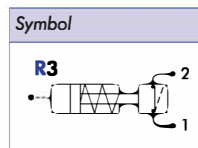
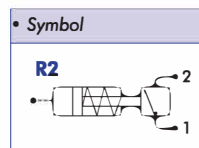
Code	Setting
R1	0 ÷ 10 bar (black color) 0 ÷ 145 psi (red color)

ORDER CODE	DESCRIPTION	SETTING	THREAD	NETT. PRICE	
				£ STERLING	€ EUROS
R1	PRESSURE GAUGE INDICATOR	0-10 BAR (BLACK) 0-145 PSI (RED)	1/8" BSP	£4.08	€ 5.51



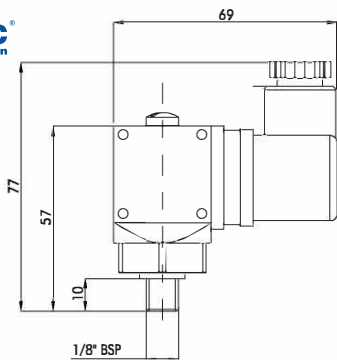
PRESSURE SWITCH

- Current: 0,5 A resistive/ 0,2 A inductive
- Max voltage: 250V AC
- Cap: PVC



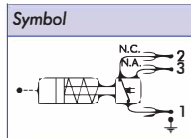
Code	Setting	Contact
R2	1,3 bar (18,85 psi)	N.A. O.C.
R3	1,3 bar (18,85 psi)	N.C. C.C.

ORDER CODE	DESCRIPTION	SETTING	THREAD	NETT. PRICE	
				£ STERLING	€ EUROS
R2	PRESSURE SWITCH	1.3 BAR 18.85 PSI N.A O.C	1/8" BSP	£15.87	€ 21.42
R3	PRESSURE SWITCH	1.3 BAR 18.85 PSI N.C C.C	1/8" BSP	£15.63	€ 21.10



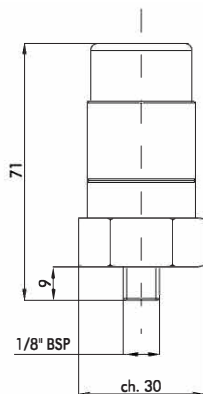
PRESSURE SWITCH

- Current: 5 A resistive
- Max voltage: 250V AC
- Protection: IP65 as per DIN 40050
- Setting range: 0,5 - 10 bar

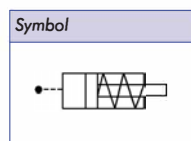


Code	Setting
R4	1,3 bar (18,85 psi)

ORDER CODE	DESCRIPTION	SETTING	THREAD	NETT. PRICE	
				£ STERLING	€ EUROS
R4	PRESSURE SWITCH	1.3 BAR 18.85 PSI	1/8" BSP	£53.89	€ 72.76

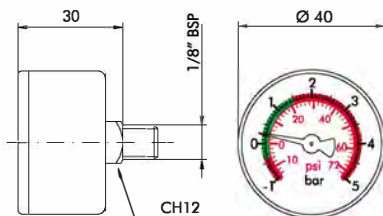


VISUAL PRESSURE



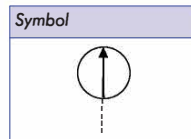
Code	Setting
R6	1,2 bar - 17,4 psi

ORDER CODE	DESCRIPTION	SETTING	THREAD	NETT. PRICE	
				£ STERLING	€ EUROS
R6	VISUAL PRESSURE	1.2 BAR 17.4 PSI	1/8" BSP	£18.51	€ 24.99



PRESSURE VACUUM GAUGE

- Housing in black ABS material



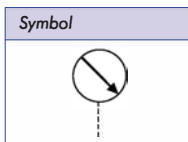
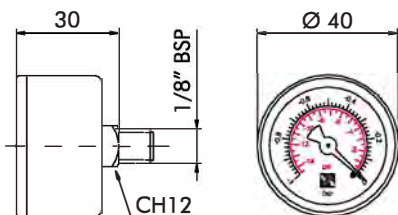
Code	Setting
R7	-1 ÷ 5 bar (black color) - 14,5 ÷ 72,5 psi (red color)

ORDER CODE	DESCRIPTION	SETTING	THREAD	NETT. PRICE	
				£ STERLING	€ EUROS
R7	PRESURE VACUUM GAUGE	-1 TO 5BAR (BLACK) 14.5 TO 72.5 PSI (RED)	1/8" BSP	£5.17	€ 6.99



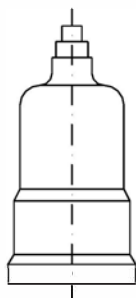
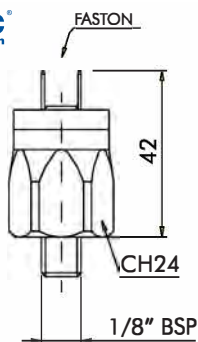
VACUUM GAUGE

Housing in black ABS material



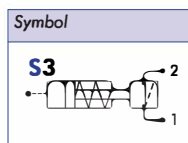
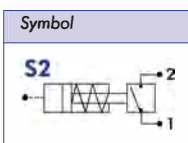
Code	Setting
S1	0 ÷ -1 bar (black color) 0 ÷ -14,5 psi (red color)

ORDER CODE	DESCRIPTION	SETTING	THREAD	NETT. PRICE				
S1	VACUUM GAUGE	0 TO -1 BAR (BLACK) 0 TO 114.5 PSI (RED)	1/8" BSP	<table border="1"> <thead> <tr> <th>£ STERLING</th> <th>€ EUROS</th> </tr> </thead> <tbody> <tr> <td>£6.08</td> <td>€ 8.21</td> </tr> </tbody> </table>	£ STERLING	€ EUROS	£6.08	€ 8.21
£ STERLING	€ EUROS							
£6.08	€ 8.21							



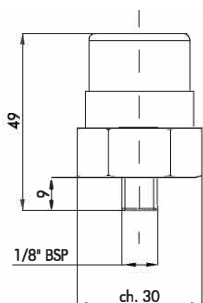
VACUUM SWITCH

- Current: 0,5 A resistive/ 0,2 A inductive
- Max voltage: 250V AC
- Cap: PVC

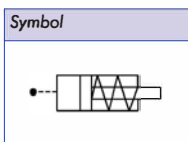


Code	Setting	Contact
S2	-0,2 bar (-2,9 psi)	N.A. O.C.
S3	-0,2 bar (-2,9 psi)	N.C. C.C.

ORDER CODE	DESCRIPTION	SETTING	THREAD	NETT. PRICE				
S2	VACUUM SWITCH	-0.2 BAR (2.9 PSI) N.A O.C	1/8" BSP	<table border="1"> <thead> <tr> <th>£ STERLING</th> <th>€ EUROS</th> </tr> </thead> <tbody> <tr> <td>£21.36</td> <td>€ 28.84</td> </tr> </tbody> </table>	£ STERLING	€ EUROS	£21.36	€ 28.84
£ STERLING	€ EUROS							
£21.36	€ 28.84							
S3	VACUUM SWITCH	-0.2 BAR -2.9 PSI N.C C.C	1/8" BSP	<table border="1"> <thead> <tr> <th>£ STERLING</th> <th>€ EUROS</th> </tr> </thead> <tbody> <tr> <td>£18.06</td> <td>€ 24.38</td> </tr> </tbody> </table>	£ STERLING	€ EUROS	£18.06	€ 24.38
£ STERLING	€ EUROS							
£18.06	€ 24.38							

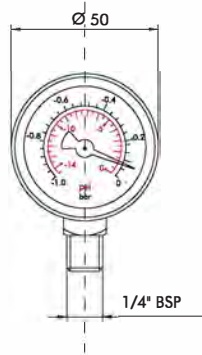


VACUUM SWITCH VIEW



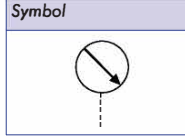
Code	Setting
S4	-0,3 bar / -4,35 psi

ORDER CODE	DESCRIPTION	SETTING	THREAD	NETT. PRICE				
S4	VACUUM SWITCH VIEW	-0.3 BAR -4.35PSI	1/8" BSP	<table border="1"> <thead> <tr> <th>£ STERLING</th> <th>€ EUROS</th> </tr> </thead> <tbody> <tr> <td>£10.21</td> <td>€ 13.78</td> </tr> </tbody> </table>	£ STERLING	€ EUROS	£10.21	€ 13.78
£ STERLING	€ EUROS							
£10.21	€ 13.78							



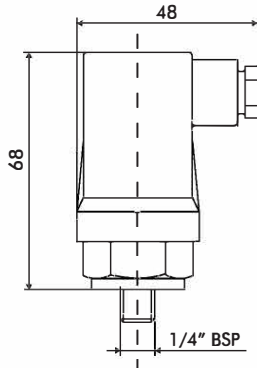
VACUUM GAUGE

Housing in black ABS material



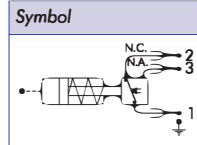
Code	Setting
S5	0 ÷ -1 bar (black color) 0 ÷ -14,5 psi (red color)

ORDER CODE	DESCRIPTION	SETTING	THREAD	NETT. PRICE	
				£ STERLING	€ EUROS
S5	VACUUM GAUGE	0 TO -1 BAR (BLACK) 0 TO -14.5 PSI (RED)	1/4" BSP	£3.27	€ 4.42



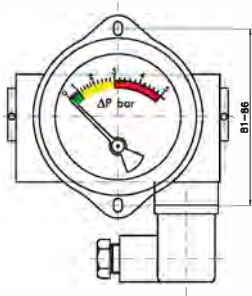
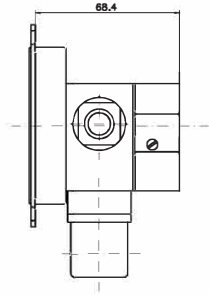
VACUUM SWITCH

- Current: 5 A resistive
- Max voltage: 250V AC
- Protection: IP65 as per DIN 40050



Code	Setting
S6	-0,2 bar (-2,9 psi)

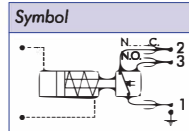
ORDER CODE	DESCRIPTION	SETTING	THREAD	NETT. PRICE	
				£ STERLING	€ EUROS
S6	VACUUM SWITCH	-0.2 BAR -2.9 PSI	1/4" BSP	£48.99	€ 66.14



DIFFERENTIAL ELECTRIC VISUAL SWITCH

Visual indicator:

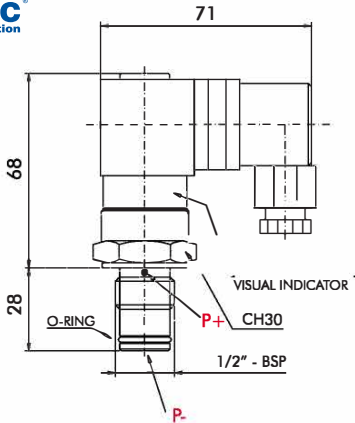
- 0 ÷ 1 bar (14,5 psi) green
- 1 ÷ 3 bar (43,5 psi) yellow
- 3 ÷ 5 bar (72,5 psi) red



Code	Setting
Z10*	2 bar (29 psi)

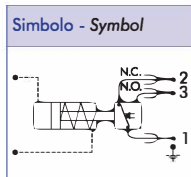
For other information please contact our technical department.
Recommended for oil filters.

ORDER CODE	DESCRIPTION	SETTING	THREAD	NETT. PRICE	
				£ STERLING	€ EUROS
Z10	DIFFERENTIAL ELECTRIC VISUAL SWITCH	2 BAR 29 PSI		£621.00	€ 838.35



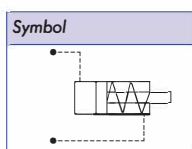
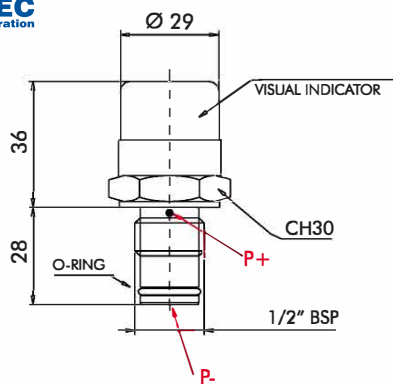
DIFFERENTIAL ELECTRIC VISUAL SWITCH

- Visual indicator:
 - GREEN: clean element
 - RED: dirty element
- Electric plug connection as per DIN 43650
- Protection: IP65 secondo DIN 40050
- Max current: 5A resistive 5A inductive
- Max voltage: 250V AC - 30V DC



Code	Setting
Z25	2 bar (29 psi)
Z27	5 bar (72,5 psi)
Z29	8 bar (116 psi)

ORDER CODE	DESCRIPTION	SETTING	THREAD	NETT. PRICE	
				£ STERLING	€ EUROS
Z25	DIFFERENTIAL ELECTRIC VISUAL SWITCH	2 BAR 29 PSI	1/2" BSP	£34.84	€ 47.03
Z27	DIFFERENTIAL ELECTRIC VISUAL SWITCH	5 BAR 72.5 PSI	1/2" BSP	£34.84	€ 47.03
Z29	DIFFERENTIAL ELECTRIC VISUAL SWITCH	8 BAR 116 PSI	1/2" BSP	£34.84	€ 47.03

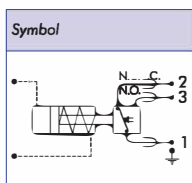
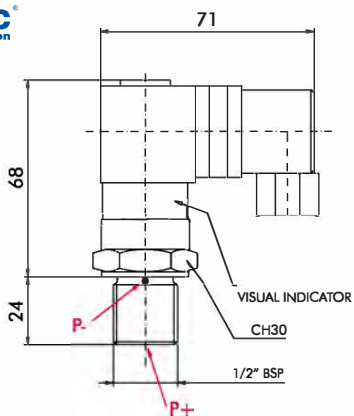


DIFFERENTIAL VISUAL SWITCH

- Visual indicator:
- GREEN: clean element
 - RED: dirty element

Code	Setting
Z24	2 bar (29 psi)
Z26	5 bar (72,5 psi)
Z28	8 bar (116 psi)

ORDER CODE	DESCRIPTION	SETTING	THREAD	NETT. PRICE	
				£ STERLING	€ EUROS
Z24	DIFFERENTIAL VISUAL SWITCH	2 BAR 29 PSI	1/2" BSP	£25.32	€ 34.17
Z26	DIFFERENTIAL VISUAL SWITCH	5 BAR 72.5 PSI	1/2" BSP	£25.32	€ 34.17
Z28	DIFFERENTIAL VISUAL SWITCH	8 BAR 116 PSI	1/2" BSP	£25.32	€ 34.17

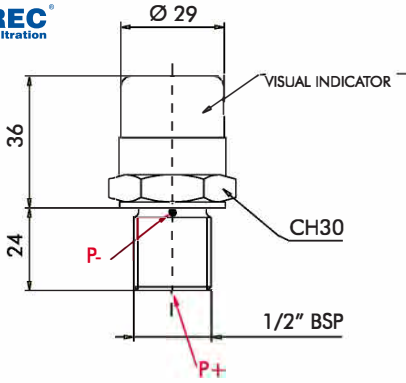


DIFFERENTIAL ELECTRIC VISUAL SWITCH

- Visual indicator:
- GREEN: clean element
 - RED: dirty element
 - Electrig plug connection as per DIN 43650
 - Protection: IP65 secondo DIN 40050
 - Max current: 5A resistive 5A inductive
 - Max voltage: 250V AC - 30V DC

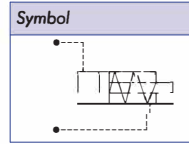
Code	Setting
Z4	5 bar (72,5 psi)
Z6	8 bar (116 psi)

ORDER CODE	DESCRIPTION	SETTING	THREAD	NETT. PRICE	
				£ STERLING	€ EUROS
Z4	DIFFERENTIAL ELECTRICAL VISUAL SWITCH	5 BAR 72.5 PSI	1/2" BSP	£34.02	€ 45.93
Z6	DIFFERENTIAL ELECTRICAL VISUAL SWITCH	8 BAR 116 PSI	1/2" BSP	£34.02	€ 45.93



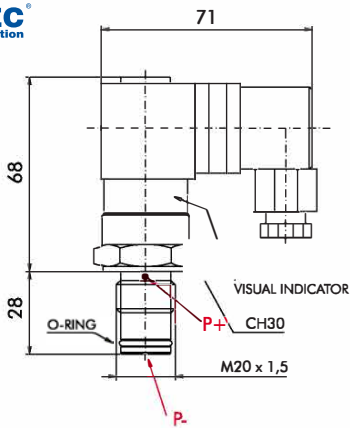
DIFFERENTIAL VISUAL SWITCH

Visual indicator:
 - GREEN: clean element
 - RED: dirty element



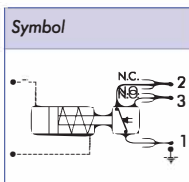
Code	Setting
Z3	5 bar (72,5 psi)
Z5	8 bar (116 psi)

ORDER CODE	DESCRIPTION	SETTING	THREAD	NETT. PRICE	
				£ STERLING	€ EUROS
Z3	DIFFERENTIAL VISUAL SWITCH	5 BAR 72.5 PSI	1/2" BSP	£25.97	€ 35.07
Z5	DIFFERENTIAL VISUAL SWITCH	8 BAR 116 PSI	1/2" BSP	£24.49	€ 33.07



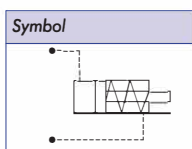
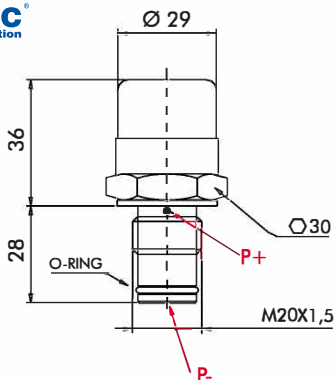
DIFFERENTIAL ELECTRIC VISUAL SWITCH

- Visual indicator:
 - GREEN: clean element
 - RED: dirty element
- Electrig plug connection as per DIN 43650
- Protection: IP65 secondo DIN 40050
- Max current: 5A resistive 5A inductive
- Max voltage: 250V AC - 30V DC



Code	Setting
Z2	1,3 bar (18,85 psi)
Z13	5 bar (72,5 psi)
Z18	8 bar (116 psi)

ORDER CODE	DESCRIPTION	SETTING	THREAD	NETT. PRICE	
				£ STERLING	€ EUROS
Z2	DIFFERENTIAL ELECTRICAL VISUAL SWITCH	1.3 BAR 18.85 PSI	M20 X 1.5	£34.84	€ 47.03
Z13	DIFFERENTIAL ELECTRIC VISUAL SWITCH	5 BAR 72.5 PSI	M20 x 1.5	£34.84	€ 47.03
Z18	DIFFERENTIAL ELECTRIC VISUAL SWITCH	8 BAR 116 PSI	M20 x 1.5	£34.02	€ 45.93

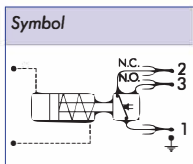
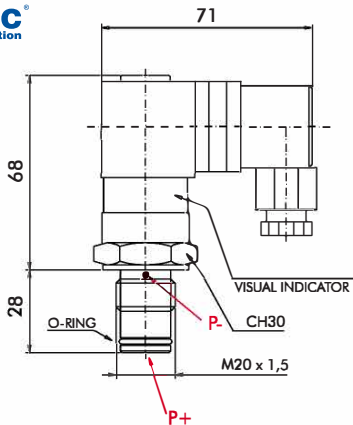


DIFFERENTIAL VISUAL SWITCH

- Visual indicator:
- GREEN: clean element
 - RED: dirty element

Code	Setting
Z1	1,3 bar (18,85 psi)
Z12	5 bar (72,5 psi)
Z17	8 bar (116 psi)

ORDER CODE	DESCRIPTION	SETTING	THREAD	NETT. PRICE	
				£ STERLING	€ EUROS
Z1	DIFFERENTIAL VISUAL SWITCH	1.3 BAR 18.85 PSI	M20 X 1.5	£25.32	€ 34.17
Z12	DIFFERENTIAL VISUAL SWITCH	5 BAR 72.5 PSI	M20 x 1.5	£25.32	€ 34.17
Z17	DIFFERENTIAL VISUAL SWITCH	8 BAR 116 PSI	M20 x 1.5	£25.32	€ 34.17

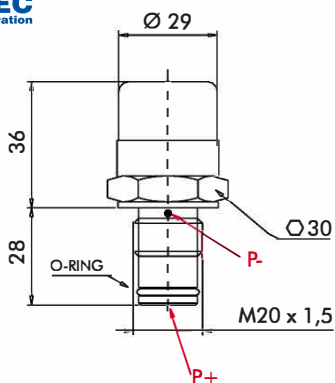


DIFFERENTIAL ELECTRIC VISUAL SWITCH

- Visual indicator:
- GREEN: clean element
 - RED: dirty element
 - Electrig plug connection as per DIN 43650
 - Protection: IP65 secondo DIN 40050
 - Max current: 5A resistive 5A inductive
 - Max voltage: 250V AC - 30V DC

Code	Setting
Z16	1,3 bar (18,85 psi)
Z31	5 bar (72,5 psi)
Z33	8 bar (116 psi)
Z38	2,7 bar (40 psi)

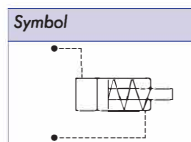
ORDER CODE	DESCRIPTION	SETTING	THREAD	NETT. PRICE	
				£ STERLING	€ EUROS
Z16	DIFFERENTIAL ELECTRIC VISUAL SWITCH	1.3 BAR 18.85 PSI	M20 x 1.5	£34.84	€ 47.03
Z31	DIFFERENTIAL ELECTRIC VISUAL SWITCH	5 BAR 72.5 PSI	M20 x 1.5	£34.84	€ 47.03
Z33	DIFFERENTIAL ELECTRIC VISUAL SWITCH	8 BAR 116 PSI	M20 x 1.5	£34.84	€ 47.03
Z38	DIFFERENTIAL ELECTRIC VISUAL SWITCH	2.7 BAR 40 PSI	M20 x 1.5	£34.84	€ 47.03



DIFFERENTIAL VISUAL SWITCH

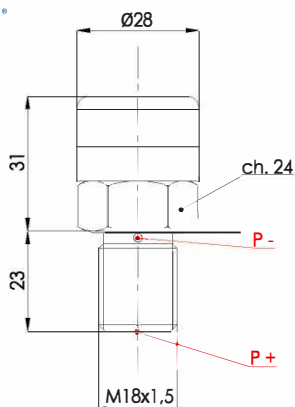
Visual indicator:

- GREEN: clean element
- RED: dirty element



Code	Setting
Z15	1,3 bar (18,85 psi)
Z30	5 bar (72,5 psi)
Z32	8 bar (116 psi)
Z37	2,7 bar (40 psi)

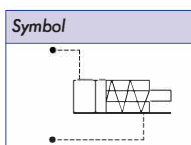
ORDER CODE	DESCRIPTION	SETTING	THREAD	NETT. PRICE	
				£ STERLING	€ EUROS
Z15	DIFFERENTIAL VISUAL SWITCH	1.3 BAR 18.85 PSI	M20 x 1.5	£25.32	€ 34.17
Z30	DIFFERENTIAL VISUAL SWITCH	5 BAR 72.5 PSI	M20 x 1.5	£25.32	€ 34.17
Z32	DIFFERENTIAL VISUAL SWITCH	8 BAR 116 PSI	M20 x 1.5	£25.32	€ 34.17
Z37	DIFFERENTIAL VISUAL SWITCH	2.7 BAR 40 PSI	M20 x 1.5	£25.32	€ 34.17



DIFFERENTIAL VISUAL SWITCH

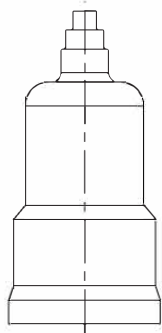
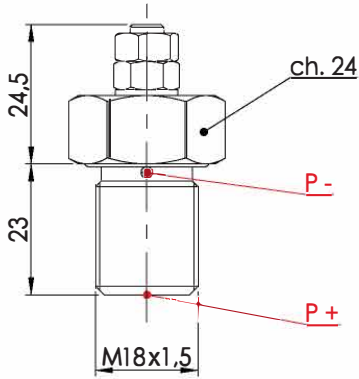
Visual indicator:

- GREEN: clean element
- RED: dirty element



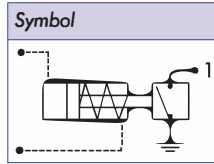
Code	Setting
Z20	1,3 bar (18,85 psi)

ORDER CODE	DESCRIPTION	SETTING	THREAD	NETT. PRICE	
				£ STERLING	€ EUROS
Z20	DIFFERENTIAL VISUAL SWITCH	1.3 BAR 18.85 PSI	M18 x 1.5	£14.16	€ 19.12



DIFFERENTIAL ELECTRIC SWITCH

- Max current: 0,5A resistive / 0,2A inductive
- Max voltage: 30V AC
- Protection: IP64 as per DIN 40050



Code	Setting
Z21	1,3 bar (18,85 psi)

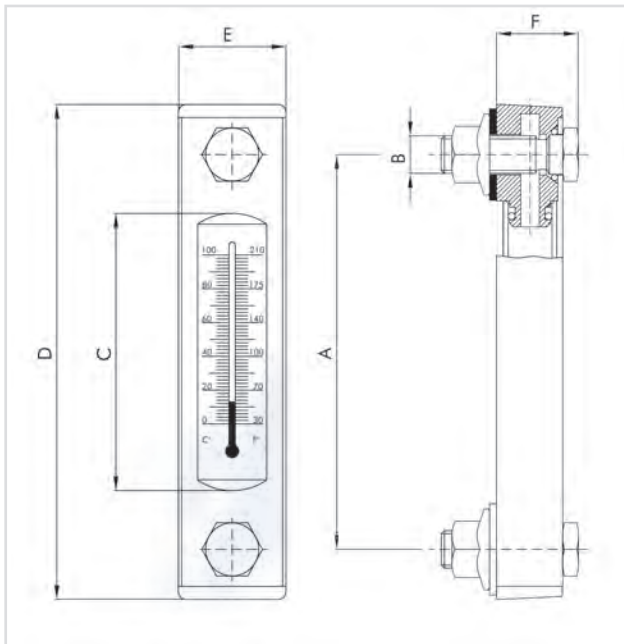
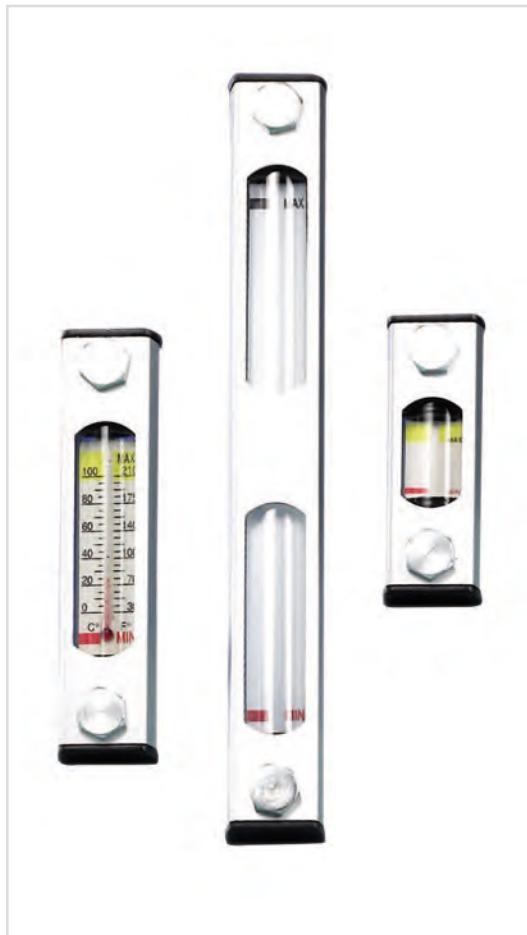
ORDER CODE	DESCRIPTION	SETTING	THREAD	NETT. PRICE	
				£ STERLING	€ EUROS
Z21	DIFFERENTIAL ELECTRIC SWITCH	1.3 BAR 18.85 PSI	M18 x 1.5	£11.71	€ 15.80



SERIE FL - FLUID LEVEL TEMPERATURE GAUGES



www.flowfitonline.com
TECH. DATA SHEET
FA02



Technical Information

Description: Fluid level temperature gauges

Max working pressure: 1 Bar (14.5 psi)

Connection Ports: Metric

Working temperature: -20°C +80°C (-4°F +176°F)

Thermometer: Double scale 0°C + 100°C 30°F + 210 °F

Materials:

- Heads: nylon
- Protection: anodized aluminium
- Screws: zinc steel
- Seal: Buna-N compatible as per ISO 2943 with mineral oil (HH-HL-HM-HR-HV-HG) water oil emulsions (HFAE-HFAS)

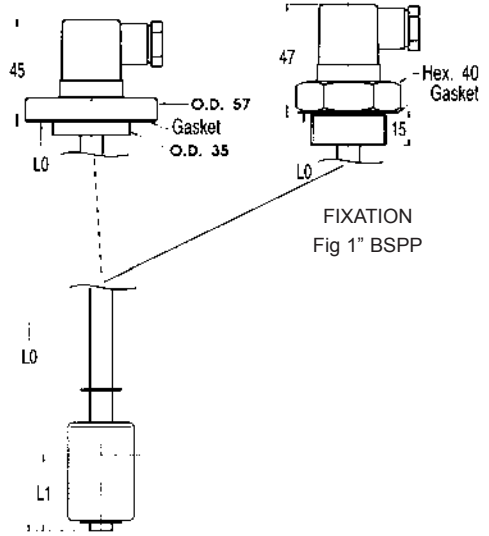
CODE	A	B	C	D	E	F
FL-1	76	M10	35	106	36	30
FL-2	127	M10	86	157	36	30
FL-3	254	M12	213	284	36	30

ORDER CODE	HOLE CENTRES	BOLT THREAD SIZE	NETT. PRICE	
			£ STERLING	€ EUROS
FL1M10	76mm	M10x1.5	£8.39	€ 11.33
FL1M12	76mm	M12x1.75	£8.39	€ 11.33
FL1TM10	76mm	M10x1.5	£8.52	€ 11.50
FL1TM12	76mm	M12x1.75	£9.30	€ 12.55
FL2M10	127mm	M10x1.5	£9.21	€ 12.44
FL2M12	127mm	M12x1.75	£9.21	€ 12.44
FL2TM10	127mm	M10x1.5	£9.80	€ 13.22
FL2TM12	127mm	M12x1.75	£9.80	€ 13.22
FL3M10	254mm	M10x1.5	£14.63	€ 19.75
FL3M12	254mm	M12x1.75	£14.63	€ 19.75
FL3TM10	254mm	M10x1.5	£16.68	€ 22.51
FL3TM12	254mm	M12x1.75	£16.68	€ 22.51

ELECTRIC LEVEL INDICATORS

FLOATING LEVEL GAUGE BSP AND 3 HOLE MOUNT

www.flowfitonline.com
TECH. DATA SHEET
FA03



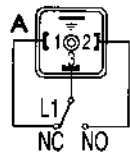
Tank-top mounted they give an electrical signal when the minimum fluid level is reached. They are always supplied with open contacts.

With just one contact you have both possible electric connections normally open or normally closed.

- Min or min/max level monitoring
- Compatible with mineral oils, oil-water emulsions, diesel and water
- Unsinkable floater
- Electric contact hermetically sealed inside the floater rod
- Flanged or nut type fixation to tank cover

VOLTAGE
All voltages DC/AC up to 240V
MAX CURRENT
220V, 60W, 60VA, A1
TEMPERATURE RANGE
-10 to +80°C
MAX PRESSURE
12 Bar

Electric connections



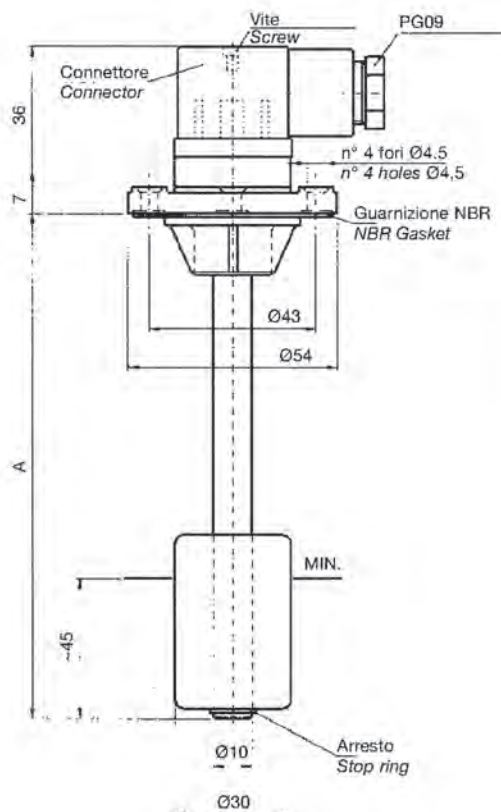
ORDER **W** ST THE ONE AND YOU HAVE ALL THREE FIXING POINTS IN ONE LEVEL GAUGE

PART NUMBER	LENGTH (L0)	NETT. PRICE	
		£ STERLING	€ EUROS
FLG100	100mm	£66.43	€ 89.68
FLG150	150mm	£68.36	€ 92.30
FLG200	200mm	£69.87	€ 94.32
FLG250	250mm	£71.22	€ 96.14
FLG300	300mm	£73.16	€ 98.77
FLG350	350mm	£73.16	€ 98.77
FLG400	400mm	£76.33	€ 103.05
FLG450	450mm	£76.33	€ 103.05
FLG550	500mm	£102.51	€ 138.39

ELECTRIC FLOAT LEVEL SWITCHES 2 HOLE MOUNT

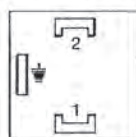
www.flowfitonline.com
TECH. DATA SHEET
FA03

LM1CFPA... LM2CFPA...



Collegamenti elettrici standard
Standard electrical connection

LM1CFPA



Material: Flange in thermoplastic, brass stem, stop rings in bronze, NBR float.

NB: Customized lengths can be supplied on request. Max length 1500mm

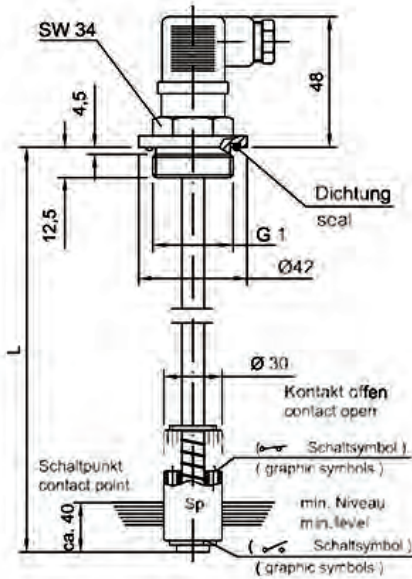
Executions also available in accordance with the Directive ATEX 94//9/EC on intrinsic safety equipment with marking II 1/2 G Ex ia IIB T6.

PART NUMBER	LENGTH (A)	NETT. PRICE	
		£ STERLING	€ EUROS
LM1CFPA100	100	£58.58	€ 79.08
LM1CFPA150	150	£60.29	€ 81.39
LM1CFPA200	200	£61.70	€ 83.30
LM1CFPA250	250	£122.91	€ 165.93
LM1CFPA300	300	£64.52	€ 87.10
LM1CFPA350	350	£64.52	€ 87.10
LM1CFPA400	400	£67.32	€ 90.88
LM1CFPA450	450	£67.32	€ 90.88
LM1CFPA500	500	£70.95	€ 95.77

ELECTRIC FLOATING LEVEL GAUGES

SERIE NS 1 WITH 1 SWITCH CONTACT

www.flowfitonline.com
TECH. DATA SHEET
FA03



DESCRIPTION

- Electrical level supervision
- Appropriate for mineral oil, diesel and benzine
- 1 switch contact
- Electrical circuit for level, min/max
- Standard version level max = contact open

TECHNICAL DATA

- Stem: Brass
- Float: Nylon
- Max. Temp: 80° C
- Protection: IP 65
- Hysteresis: 2-3 mm
- Max voltage: 250 VAC
- Max switch current: Level 1.3 A
- Power AC/DC Level: 80 WVA

contact open with max. level



By turning the float the contact is changed to:

contact closed with min. level



max. level - contact closed
min. level contact open

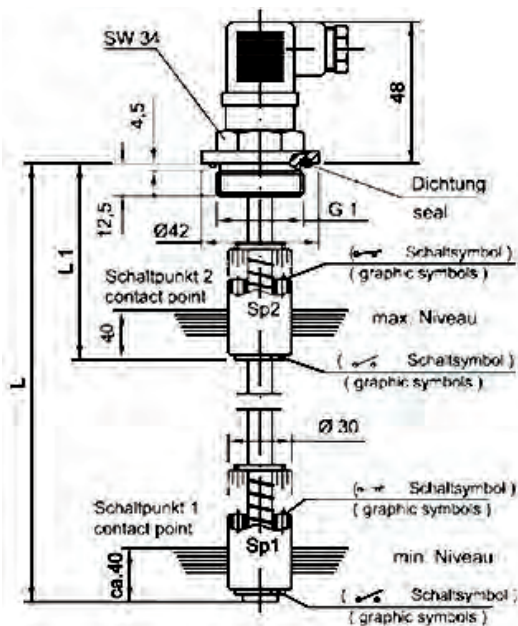


PART NUMBER	TYPE	L	NETT. PRICE	
			£ STERLING	€ EUROS
FLG1420	NS 1-NO/100	100	£57.06	€ 77.03
FLG1422	NS 1-NO/150	150	£54.87	€ 74.08
FLG1424	NS 1-NO/200	200	£58.16	€ 78.52
FLG1426	NS 1-NO/250	250	£61.23	€ 82.65
FLG1428	NS 1-NO/300	300	£61.43	€ 82.93
FLG1430	NS 1-NO/350	350	£61.43	€ 82.93
FLG1432	NS 1-NO/400	400	£63.88	€ 86.24
FLG1434	NS 1-NO/500	500	£66.60	€ 89.91



SERIE NS 2 WITH 2 SWITCH CONTACTS

www.flowfitonline.com
TECH. DATA SHEET
FA03



DESCRIPTION

- Electrical level supervision
- Appropriate for mineral oil, diesel and benzine
- 2 switch contacts
- Electrical circuit for level, min/max
- Standard version level max = contact open

TECHNICAL DATA

- Stem: Brass
- Float: Nylon
- Max. Temp: 80° C
- Protection: IP 65
- Hysteresis: 2-3 mm
- Max voltage: 250 VAC
- Max. Schaltstrom / Max switch current: Level 1.3 A
- Power AC/DC Level: 80 WVA

Sp 1
contact open with max. level



Sp 2
contact open with max. level



contact closed with min. level



contact closed with min. level



By turning the float the contact is changed to:
max. level - contact closed
min. level contact open

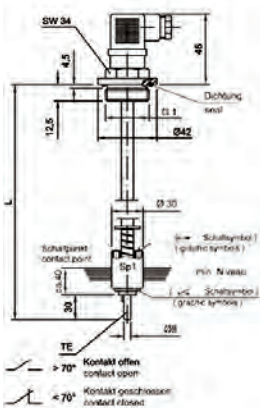


PART NUMBER	TYPE	L	L ₁	NETT. PRICE	
				£ STERLING	€ EUROS
FLG 1457	NS 2-NO/250/105	250	105	£154.45	€ 208.50
FLG1459	NS 2-NO/300/ 105	300	105	£154.45	€ 208.50
FLG1461	NS 2-NO/350/115	350	115	£154.45	€ 208.50
FLG1463	NS 2-NO/400/115	400	115	£160.41	€ 216.56
FLG 1465	NS 2-NO/500/ 125	500	125	£160.41	€ 216.56



SERIE NS 1-TE WITH TEMPERATURE SWITCH

www.flowfitonline.com
TECH. DATA SHEET
FA03



contact open with max. level



contact closed with min. level



By turning the float the contact is changed to:

max. level - contact closed
min. level contact open



DESCRIPTION

- Electrical level supervision
- Appropriate for mineral oil, diesel and benzine
- 1 switch contact
- Electrical circuit for level, min/max
- Standard version level max = contact open

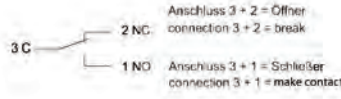
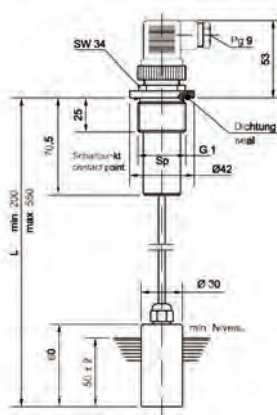
TECHNICAL DATA

- Stem: Brass
- Max. Temp: 80° C
- Hysteresis: 2-3 mm
- Max. Volt / Max voltage: 250 VAC
- Max switch current: Niveau 1,3 A Temperatur 0,5 A
- Power AC/DC Niveau/Level: 80W/VA
- Power AC/DC Temperatur: 1A1A/ A/A

PART NUMBER	TYPE	L	TEMP.	NETT. PRICE	
				£ STERLING	€ EUROS
FLGI502	NS 1-NO/ 150 TE 70° NC	150	70°	£113.84	€ 153.68
FLGI504	NS 1-NO/200 TE 70° NC	200	70°	£113.84	€ 153.68
FLG1505	NS 1-NO/240 TE 70° NC	240	70°	£113.84	€ 153.68
FLG1506	NS 1-NO/ 250 TE 70° NC	250	70°	£113.84	€ 153.68
FLGI508	NS 1-NO/ 300 TE 70° NC	300	70°	£108.43	€ 146.38
FLGI510	NS 1-NO/350 TE 70° NC	350	70°	£94.71	€ 127.85
FLG1512	NS 1-NO/ 400 TE 70°	400	70°	£116.22	€ 156.89
FLG1513	NS 1-NO/450 TE 70° NC	450	70°	£116.22	€ 156.89
FLG1514	NS 1-NO/500 TE 70° NC	500	70°	£115.24	€ 155.57

SERIE NS 1-VR WITH VARIABLE SWITCH CONTACT

www.flowfitonline.com
TECH. DATA SHEET
FA03



DESCRIPTION

- Electrical level supervision
- Appropriate for mineral oil, diesel and benzine
- The indication level can be adjusted between 200-500 mm by cutting the stem of the length required

TECHNICAL DATA

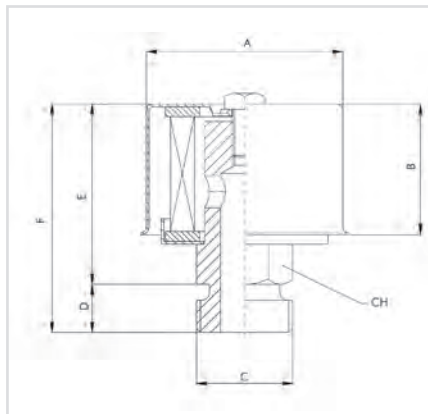
- Stem: Inoxid nisi 304
- Float: NBR
- Max. Temp: - 15... + 80° C
- Hysteresis: 2-3 mm
- Type of contact: Reed
- Max voltage: 230 VAC
- Max. switch current: Level 1.0 A
- Protection: IP 65
- Power AC/DC Level: 50 W/VA

PART NUMBER	TYPE	NETT. PRICE	
		£ STERLING	€ EUROS
FLG1410	NS 1-VR (200-550 mm)	£119.86	€ 161.81

SERIE FB - 1 AIR BREATHER FILTERS



www.flowfitonline.com
TECH. DATA SHEET
FA04



Technical Information

Description: Thread air breather filters.
Max flow rate: FB1-10 200 l/min. (53 gpm)
FB1-20 500 l/min. (132 gpm)
FB1-20 1000 l/min. (264 gpm)

Port Connection: BSP — Metric
Materials: Zinc Steel

CODE	A	B	V	D	E	F	CH
FB1-10	48	32	B1	9	45	54	14
	48	32	B2	9	45	54	19
	48	32	M12	9	45	54	14
	48	32	M16	9	45	54	19
	48	32	M18	9	45	54	19
	48	32	M22	10	45	55	24
FB1-20	67	50	B3	10	59	69	27
	67	50	B4	10	59	69	27
FB1-30	67	50	M16	10	59	69	27
	108	61	B5	15	76	91	34

ORDER CODE	THREAD	LENGTH	O/D	MICRON	AIRFLOW	NETT. PRICE	
						£ STERLING	€ EUROS
FB110B1C05	1/4" BSP	54mm	48mm	5 MICRON	200 L/MIN	£7.55	€ 10.20
FB110B1C10	1/4" BSP	54mm	48mm	10 MICRON	200 L/MIN	£7.55	€ 10.20
FB110B1C40	1/4" BSP	54mm	48mm	40 MICRON	200 L/MIN	£7.83	€ 10.57
FB110B2C05	3/8" BSP	54mm	48mm	5 MICRON	200 L/MIN	£8.16	€ 11.03
FB110B2C10	3/8" BSP	54mm	48mm	10 MICRON	200 L/MIN	£8.16	€ 11.03
FB110B2C40	3/8" BSP	54mm	48mm	40 MICRON	200 L/MIN	£8.51	€ 11.49
FB120B3C05	1/2" BSP	69mm	67mm	5 MICRON	500 L/MIN	£11.18	€ 15.09
FB120B3C10	1/2" BSP	69mm	67mm	10 MICRON	500 L/MIN	£10.55	€ 14.25
FB120B3C40	1/2" BSP	69mm	67mm	40 MICRON	500 L/MIN	£10.89	€ 14.70
FB120B4C05	3/4" BSP	69mm	67mm	5 MICRON	500 L/MIN	£15.49	€ 20.91
FB120B4C10	3/4" BSP	69mm	67mm	10 MICRON	500 L/MIN	£16.42	€ 22.16
FB120B4C40	3/4" BSP	69mm	67mm	40 MICRON	500 L/MIN	£15.82	€ 21.36
FB130B5C05	1" BSP	91mm	108mm	5 MICRON	1000 L/MIN	£14.63	€ 19.75
FB130B5C10	1" BSP	91mm	108mm	10 MICRON	1000 L/MIN	£14.63	€ 19.75
FB130B5C40	1" BSP	91mm	108mm	40 MICRON	1000 L/MIN	£16.02	€ 21.62

SERIE FT FILLER BREATHER FILTERS



www.flowfitonline.com
TECH. DATA SHEET
FA05



Technical Information

Description: Filler breathers filters

Filter media: Cellulose 10, 40p

Max flow rate: •FT-5 200 l/min (53 gpm)
•FT-7 and FT-8 500 l/min (132 gpm)

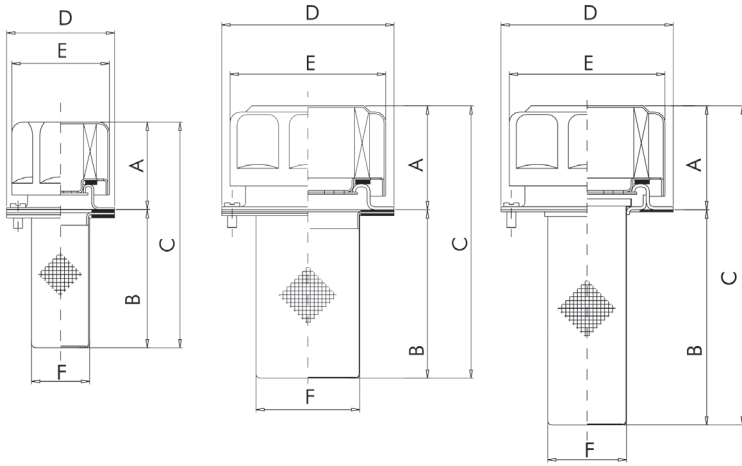
Basket: 500p

Chain: FT-8-.../1 and FT-8-.../2 are equipped with a connection chain between cap and flange.

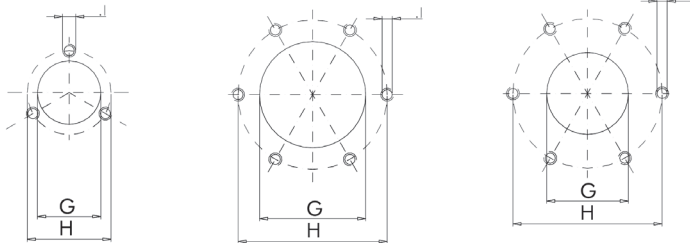
Materials: •Cap: chrome plated steel
•Basket: zinc steel
•Flange: zinc steel
•Gasket: cork

CODE	A	B	C	D	E	F	G	H	I	L	M	CHAIN
FT-5	42	65	107	52	47	27,5	31	41	M5	---	---	No
FT-7	47	20	67	---	75	---	---	---	---	3/4" BSP - NPT 1/2" BSP - NPT	---	No
FT-8-.../1	50	80	130	83	75	50	52	73	M5	---	---	Si/Yes
FT-8-.../2	50	150	200	83	75	50	52	73	m5	---	---	Si/Yes
FT-8-.../F	50	100	150	83	75	38	40	73	m5	---	---	No
FT-8-.../G	50	100	150	83	75	38	40	---	---	---	---	No
FT-8-.../S	50	133	183	63,5	75	38	64	---	---	---	---	No

OVERALL DIMENSIONS



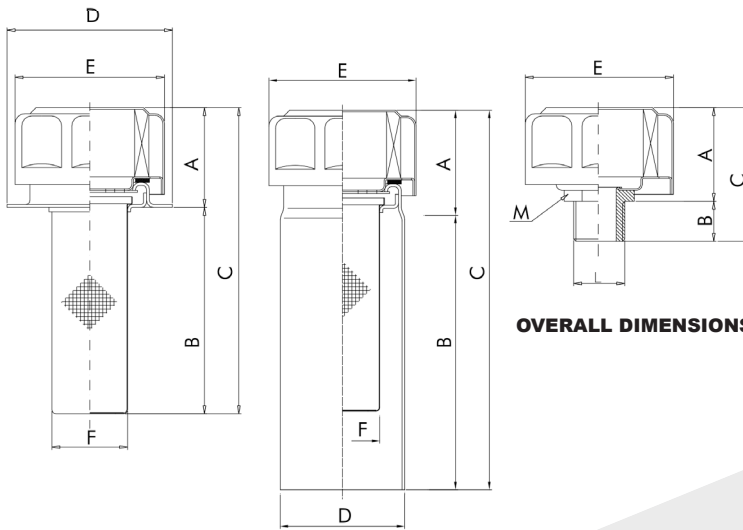
TANK HOLE DIMENSIONS



FT-5

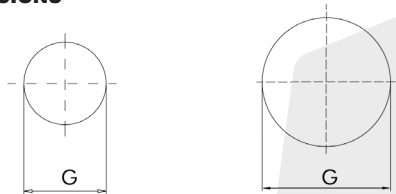
FT-8.../1
FT-8.../2

FT-8.../F



OVERALL DIMENSIONS

TANK HOLE DIMENSIONS



FT-8.../G

FT-8.../S

FT-7

ORDER CODE	OUTER DIAMETER	TOTAL LENGTH	WIDTH OF BASKET	LENGTH OF BASKET	MOUNTING	AIR RATING INNER ELEMENT	PRESSURISED RATING	NETT. PRICE	
STANDARD FILLER BREATHERS								£ STERLING	€ EUROS
FT5C10	52mm	112mm	29mm	64mm	3 HOLE P.C.D 41mm	10 MICRON	N/A	£7.47	€ 10.09
FT5C40	52mm	112mm	29mm	64mm	3 HOLE P.C.D 41mm	40 MICRON	N/A	£6.87	€ 9.28
FT8C101	83mm	135mm	78mm	78mm	6 HOLE P.C.D 73mm	10 MICRON	N/A	£8.34	€ 11.25
FT8C102	83mm	205mm	148mm	148mm	6 HOLE P.C.D 73mm	10 MICRON	N/A	£8.34	€ 11.25
FT8C401	83mm	135mm	78mm	78mm	6 HOLE P.C.D 73mm	40 MICRON	N/A	£8.34	€ 11.25
FT8C402	83mm	205mm	148mm	148mm	6 HOLE P.C.D 73mm	40 MICRON	N/A	£10.82	€ 14.61
STANDARD LOCKABLE FILLER BREATHERS									
FT8C1010L	83mm	135mm	78mm	78mm	6 HOLE P.C.D 73mm	10 MICRON	N/A	£11.84	€ 15.98
FT8C1020L	83mm	205mm	148mm	148mm	6 HOLE P.C.D 73mm	10 MICRON	N/A	£15.09	€ 20.37
FT8C4010L	83mm	135mm	78mm	78mm	6 HOLE P.C.D 73mm	40 MICRON	N/A	£12.94	€ 17.46
FT8C4020L	83mm	205mm	148mm	148mm	6 HOLE P.C.D 73mm	40 MICRON	N/A	£16.32	€ 22.03
PRESSURISED FILLER BREATHERS									
FT8C101V03	83mm	135mm	78mm	78mm	6 HOLE P.C.D 73mm	10 MICRON	0.35 BAR (5 PSI)	£20.62	€ 27.83
FT8C101V07	83mm	135mm	78mm	78mm	6 HOLE P.C.D 73mm	10 MICRON	0.75 BAR (10.8 PSI)	£20.62	€ 27.83
FT8C102V03	83mm	205mm	148mm	148mm	6 HOLE P.C.D 73mm	10 MICRON	0.35 BAR (5 PSI)	£21.46	€ 28.97
FT8C102V07	83mm	205mm	148mm	148mm	6 HOLE P.C.D 73mm	10 MICRON	0.75 BAR (10.8 PSI)	£21.46	€ 28.97
FT8C401V03	83mm	135mm	78mm	78mm	6 HOLE P.C.D 73mm	40 MICRON	0.35 BAR (5 PSI)	£17.53	€ 23.66
FT8C401V07	83mm	135mm	78mm	78mm	6 HOLE P.C.D 73mm	40 MICRON	0.75 BAR (10.8 PSI)	£17.53	€ 23.66
FT8C402V03	83mm	205mm	148mm	148mm	6 HOLE P.C.D 73mm	40 MICRON	0.35 BAR (5 PSI)	£18.37	€ 24.80
FT8C402V07	83mm	205mm	148mm	148mm	6 HOLE P.C.D 73mm	40 MICRON	0.75 BAR (10.8 PSI)	£18.37	€ 24.80
PRESSURISED LOCKABLE FILLER BREATHERS									
FT8C101V03L	83mm	135mm	78mm	78mm	6 HOLE P.C.D 73mm	10 MICRON	0.35 BAR (5 PSI)	£26.06	€ 35.19
FT8C101V07L	83mm	135mm	78mm	78mm	6 HOLE P.C.D 73mm	10 MICRON	0.75 BAR (10.8 PSI)	£26.06	€ 35.19
FT8C102V03L	83mm	205mm	148mm	148mm	6 HOLE P.C.D 73mm	10 MICRON	0.35 BAR (5 PSI)	£26.06	€ 35.19
FT8C102V07L	83mm	205mm	148mm	148mm	6 HOLE P.C.D 73mm	10 MICRON	0.75 BAR (10.8 PSI)	£26.06	€ 35.19
FT8C401V03L	83mm	135mm	78mm	78mm	6 HOLE P.C.D 73mm	40 MICRON	0.35 BAR (5 PSI)	£22.97	€ 31.01
FT8C401V07L	83mm	135mm	78mm	78mm	6 HOLE P.C.D 73mm	40 MICRON	0.75 BAR (10.8 PSI)	£22.97	€ 31.01
FT8C402V03L	83mm	205mm	148mm	148mm	6 HOLE P.C.D 73mm	40 MICRON	0.35 BAR (5 PSI)	£23.81	€ 32.15
FT8C402V07L	83mm	205mm	148mm	148mm	6 HOLE P.C.D 73mm	40 MICRON	0.75 BAR (10.8 PSI)	£23.81	€ 32.15
ORDER CODE	CAP WIDTH	TOTAL LENGTH	WIDTH OF BASKET	AIR RATING INNER ELEMENT	CONNECTION	PRESSURISED RATING	NETT. PRICE		
THREADED FILLER BREATHERS								£ STERLING	€ EUROS
FT7C10B300	75mm	67mm	75mm	10 MICRON	1/2" BSP	N/A	£11.25	€ 15.20	
FT7C10B400	75mm	67mm	75mm	10 MICRON	3/4" BSP	N/A	£11.25	€ 15.20	
FT7C40B300	75mm	67mm	75mm	40 MICRON	1/2" BSP	N/A	£11.25	€ 15.20	
FT7C40B400	75mm	67mm	75mm	40 MICRON	3/4" BSP	N/A	£11.25	€ 15.20	
PRESSURISED FILLER BREATHERS									
FT7C10B3V03	75mm	67mm	75mm	10 MICRON	1/2" BSP	0.35 BAR (5 PSI)	£18.91	€ 25.53	
FT7C10B3V07	75mm	67mm	75mm	10 MICRON	1/2" BSP	0.75 BAR (10.8 PSI)	£18.91	€ 25.53	
FT7C10B4V03	75mm	67mm	75mm	10 MICRON	3/4" BSP	0.35 BAR (5 PSI)	£18.91	€ 25.53	
FT7C10B4V07	75mm	67mm	75mm	10 MICRON	3/4" BSP	0.75 BAR (10.8 PSI)	£18.91	€ 25.53	
FT7C40B3V03	75mm	67mm	75mm	40 MICRON	1/2" BSP	0.35 BAR (5 PSI)	£18.91	€ 25.53	
FT7C40B3V07	75mm	67mm	75mm	40 MICRON	1/2" BSP	0.75 BAR (10.8 PSI)	£18.91	€ 25.53	
FT7C40B4V03	75mm	67mm	75mm	40 MICRON	3/4" BSP	0.35 BAR (5 PSI)	£18.91	€ 25.53	
FT7C40B4V07	75mm	67mm	75mm	40 MICRON	3/4" BSP	0.75 BAR (10.8 PSI)	£18.91	€ 25.53	

SIGHT GLASSES, PLUGS AND BREATHERS

OIL LEVEL SIGHT GLASSES (METAL)

FK

www.flowfitonline.com
TECH. DATA SHEET
FA06



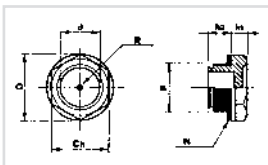
- Aluminium threaded with glass face
- Max temp. 150°c
- Max pressure 3 Bar
- Knob type • Nitrile seals

ORDER NO.	THREAD BSP	WIDTH MM	NETT. PRICE	
			£ STERLING	€ EUROS
FK14	1/4"	19	£2.45	€ 3.30
FK38	3/8"	22.5	£3.03	€ 4.09
FK12	1/2"	27	£4.33	€ 5.84
FK34	3/4"	32	£6.53	€ 8.82
FK10	1"	38	£6.96	€ 9.39
FK114	1 1/4"	48	£13.35	€ 18.03
FK112R	1 1/2"	55	£7.25	€ 9.78
FK20R	2"	76	£79.86	€ 107.81

OIL LEVEL SIGHT GLASS (PLASTIC)

SLNS - THREADED OIL LEVEL INDICATORS

www.flowfitonline.com
TECH. DATA SHEET
FA06

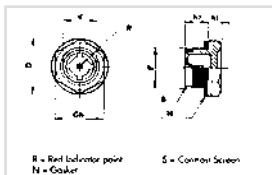


- Threaded Oil Level indicator, hex head with shoulder. Utilised in oiltanks, gearboxes and general machinery.
- This threaded level indicator allows a pressure of 3 bar.
- Asbestos free flat gasket. (available in NBR 70 shore on request)
- Manufactured from high density Polyamide resin, which offers high mechanical resistance and withstands oil, gasoline, fuel and most solvents.

ORDER NO.	CH	F	D	D	H1	H2	NM	NETT. PRICE	
								£ STERLING	€ EUROS
SLNS14	17	1/4" BSP	20	15	7	8	6	£1.65	€ 2.24
SLNS38	18	3/8" BSP	22	14	6.5	10.5	8	£1.97	€ 2.66
SLNS12	24	1/2" BSP	28	16	8	11	12	£1.93	€ 2.61
SLNS34	30	3/4" BSP	35	21	8	12	16	£2.64	€ 3.55
SLNS1	35	1" BSP	43	32	11	12	24	£3.66	€ 4.95
SLNS114	42	1 1/4" BSP	51	33	10	16		£7.52	€ 10.15
SLNS112	50	1 1/2" BSP	58	40	10	20		£9.46	€ 12.78
SLNS2	64	2" BSP	74	48	12	20		£6.72	€ 9.07

SLNT - THREADED OIL LEVEL INDICATORS WITH CONTRAST SCREEN FOR CLEARER INDICATION OF THE OIL LEVEL

www.flowfitonline.com
TECH. DATA SHEET
FA06

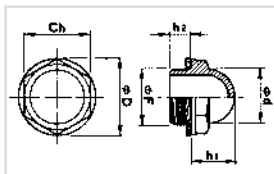


R = Ret Indicator point
N = Gasket
S = Contrast Screen

ORDER NO.	CH	F	D	D	H1	H2	NM	NETT. PRICE	
								£ STERLING	€ EUROS
SLNT38	18	3/8" BSP	22	14	6.5	10.5	8	£2.28	€ 3.08
SLNT12	24	1/2" BSP	28	16	8	11	12	£1.91	€ 2.58
SLNT34	30	3/4" BSP	35	21	8	12	16	£3.49	€ 4.71
SLNT1	35	1" BSP	43	32	11	12	24	£4.77	€ 6.45
SLNT114	42	1 1/4" BSP	51	33	10	16		£4.02	€ 5.42
SLNT112	50	1 1/2" BSP	58	40	10	20		£4.91	€ 6.63
SLNT2	64	2" BSP	74	48	12	20		£6.62	€ 8.94

LSB - OIL LEVEL INDICATOR IN TRANSPARENT THERMO PLASTIC SCREEN FOR CLEARER INDICATION OF THE OIL LEVEL

www.flowfitonline.com
TECH. DATA SHEET
FA06



- Dome shaped Level Indicator, transparent, with incorporated hex, which enables to read Oil level an angle.
- Material is transparent Polyimide resin, which resists most chemicals, oil, gasoline, fuel and a variety of solvents.
- Maximum operating temperature: 100°C.
- Flat asbestos free, oil resistant seal.
- Nm = Applicable maximum tightening torque.

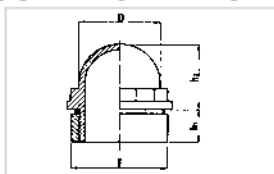
ORDER NO.	THREAD BSP.	CH	D	D	H1	H2	NM	NETT. PRICE	
								£ STERLING	€ EUROS
LSB38	3/8"	19	22	15	16	10	8	£2.18	€ 2.95
LSB12	1/2"	24	28	20	17	10	12	£2.46	€ 3.33
LSB34	3/4"	30	35	25	20	10	16	£3.36	€ 4.54
LSB1	1"	36	42	31	24	10.5	18	£4.59	€ 6.20

CF2

CF - DOME SHAPED THREADED OIL LEVEL INDICATOR

GF - STEEL MOUNTING FLANGE

www.flowfitonline.com
TECH. DATA SHEET
FA06



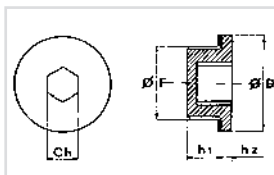
- Transparent halfball shaped level indicator, available with 2" and 3" threaded weld-on steel flanges.
- Made from Thermo Polycarbonate for optimal shock resistance and ensuring unbreakability.
- Product is utilised on truck/tankers and larger reservoirs containing liquids.

ORDER NO.	THREAD BSP	D	H1	H2	NETT. PRICE	
					£ STERLING	€ EUROS
CF2	2"	59	22	32	£4.96	€ 6.70
CF3	3"	85	32	63	£13.24	€ 17.87
GF2	2"	70	20		£17.77	€ 23.99
GF3	3"	102	30		£22.35	€ 30.16

TCNB

LOW PROFILE PLUGS

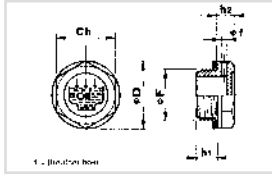
www.flowfitonline.com
TECH. DATA SHEET
FA06



- Socket style low profile threaded plug.
- This low profile plug is made from reinforced Thermoplastic and provides an excellent mechanical resistance at both low and higher temperatures. (Max. 110°C.)
- Flat asbestos free seal
- For tightening torques (Nm) see table below.
- Special plugs in Polyimide IXEF 1022 are available for increased mechanical torque and temperatures up to 150°C. (see table Nm (IXEF)).

TYPE	F	CH	D	H1	H2	NM	NM(IXEF)	PRICE	
								£ STERLING	€ EUROS
TCNB14	1/4" BSP	6	20	8	2.5	3	5	£1.24	€ 1.67
TCNB38	3/8" BSP	8	22.5	10.5	3.5	6	6	£1.37	€ 1.85
TCNB12	1/2" BSP	10	28.5	10.5	3.5	8	10	£1.65	€ 2.24
TCNB34	3/4" BSP	12	35	10.5	4	10	18	£1.09	€ 1.47

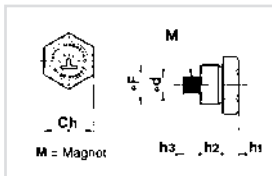
TCN - OIL FILL PLUGS
TCNS - OIL FILL PLUG WITH BREATHER HOLE
TSN - OIL DRAIN PLUG



- Hex threaded oil fill plug in Thermoplastic material ensuring high mechanical resistance at both low and higher temperature (max. 100/110°C), dimensional stability and shock resistant.
- Flat asbestos free oil resistant seal.
- Style TCN and TCNS have the UNI fill symbol and the word OIL molded on top; the model TCNS has a breather hole located in the side of the hex with a diameter of 2-2.5mm.
- Style TSN has the UNI drain symbol on top.

TYPE	F	CH	D	H1	H2	NM	NETT. PRICE	
							£ STERLING	€ EUROS
TCN								
TCN14	1/4" BSP	17	19.5	9	7	5	£1.22	€ 1.65
TCN38	3/8" BSP	18	22	10	7.5	8	£1.37	€ 1.85
TCN12	1/2" BSP	24	28	11	7.5	9	£1.65	€ 2.24
TCN34	3/4" BSP	30	34	11	9	11	£2.25	€ 3.03
TCN1	1" BSP	35	42	12	10.5	20	£3.11	€ 4.20
TCN114	1 1/4" BSP	42	51	13.5	12		£4.64	€ 6.27
TCN112	1 1/2" BSP	50	58	16	10		£5.24	€ 7.07
TCN2	2" BSP	64	74	16	12		£8.68	€ 11.72
TCNS								
TCNS14	1/4" BSP	17	19.5	9	7	5	£1.06	€ 1.43
TCNS38	3/8" BSP	18	22	10	7.5	8	£1.17	€ 1.58
TCNS12	1/2" BSP	24	28	11	7.5	9	£1.76	€ 2.38
TCNS34	3/4" BSP	30	34	11	9	11	£1.77	€ 2.39
TCNS1	1" BSP	35	42	12	10.5	20	£2.61	€ 3.53
TCNS114	1 1/4" BSP	42	51	13.5	12		£3.82	€ 5.16
TCNS112	1 1/2" BSP	50	58	16	10		£4.95	€ 6.67
TCNS2	2" BSP	64	74	16	12		£7.12	€ 9.61
TSN								
TSN14	1/4" BSP	17	19.5	9	7	5	£1.09	€ 1.47
TSN38	3/8" BSP	18	22	10	7.5	8	£1.23	€ 1.67
TSN12	1/2" BSP	24	28	11	7.5	9	£1.48	€ 1.99
TSN34	3/4" BSP	30	34	11	9	11	£2.02	€ 2.72
TSN1	1" BSP	35	42	12	10.5	20	£2.79	€ 3.77
TSN114	1 1/4" BSP	42	51	13.5	12		£2.79	€ 3.77
TSN112	1 1/2" BSP	50	58	16	10		£4.16	€ 5.62
TSN2	2" BSP	64	74	16	12		£4.71	€ 6.35

TMA
ALUMINIUM DRAIN PLUG WITH MAGNET

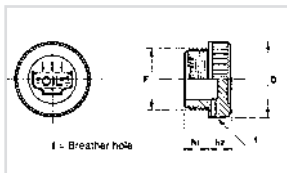


- Hex plug manufactured from aluminium 11s complete with asbestos free flat seal
- Fitted with pressed-in cylindrical magnet
- Fitted to base of tanks to remove ferrous particles
- Text — magnetic

TYPE	F	CH	D	H1	H2	PRICE	
						£ STERLING	€ EUROS
TMA14	1/4" BSP	18	8	7	10	£5.13	€ 6.92
TMA38	3/8" BSP	22	10	7	10	£7.43	€ 10.03
TMA12	1/2" BSP	27	10	8	10	£7.81	€ 10.54
TMA34	3/4" BSP	34	13	8	10	£13.07	€ 17.65
TMA1	1" BSP	40	13	8	14	£17.73	€ 23.94

TCZ - KNURLED OIL FILL PLUG TCZS - KNURLED OIL FILL PLUG WITH BREATHER HOLE

www.flowfitonline.com
TECH. DATA SHEET
FA06

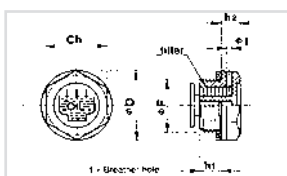


- Threaded plug with knurled head in Thermoplastic material (Polymide 66) ensuring high mechanical resistance at both low and high temperature (max. 100/110°C). Excellent dimensional stability and shock resistant.
- 'O' ring seal or 70 shore rubber seal.
- Available in standard black colour, red on request.
- Style TCZ and TCZS have molded UNI fill symbol and the text "OIL" molded on top.
- Style TSZ has the UNI drain symbol molded on top.
- The style TZCS incorporates a breather hole, located on the knurled rim with a diameter of 2-3mm.

TYPE	F	D	H1	H2	NETT. PRICE	
					£ STERLING	€ EUROS
TCZ						
TCZ14	1/4" BSP	20	9	9	£1.22	€ 1.51
TCZ38	3/8" BSP	20.5	10	9	£1.37	€ 1.67
TCZ12	1/2" BSP	28	10.5	10.5	£1.65	€ 1.99
TCZ34	3/4" BSP	31	11	12	£2.25	€ 2.72
TCZ1	1" BSP	39	12	12	£3.11	€ 3.77
TCZ114	1 1/4" BSP	49	13.5	13	£4.83	€ 5.84
TCZ112	1 1/2" BSP	55	14.5	14.7	£5.59	€ 6.79
TCZ2	2" BSP	68.5	16	15	£8.68	€ 10.53
TCZS						
TCZS14	1/4" BSP	20	9	9	£1.76	€ 2.38
TCZS38	3/8" BSP	20.5	10	9	£1.50	€ 2.03
TCZS12	1/2" BSP	28	10.5	10.5	£1.24	€ 1.67
TCZS34	3/4" BSP	31	11	12	£2.45	€ 3.30
TCZS1	1" BSP	39	12	12	£3.23	€ 4.36
TCZS114	1 1/4" BSP	49	13.5	13	£4.80	€ 6.47
TCZS112	1 1/2" BSP	55	14.5	14.7	£6.04	€ 8.15
TCZS2	2" BSP	68.5	16	15	£8.88	€ 11.99

TCSA - OIL FILL PLUG WITH BREATHER AND VANE TCSF - OIL FILL PLUG WITH BREATHER, VANE AND FILTER

www.flowfitonline.com
TECH. DATA SHEET
FA06

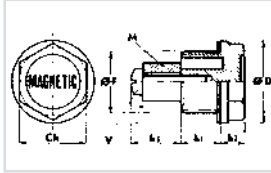


- Hex head oil fill plug made from Thermoplastic material (Polymide 66), ensuring high mechanical resistance at both low and higher temperatures. (max. 100/110°C).
- This product offers excellent dimensional stability and is shock resistant.
- Asbestos free flat oil resistant seal.
- The plugs are marked with the UNI fill symbol and the word OIL, the breather hole is located on the side of the hex, with a diameter of 2-3mm.
- The incorporated oil dampening vane will reduce spillage when strong oil movement in the container or reservoir takes place.
- The Polyurethane foam filter prevents contamination from the ambient atmosphere polluting the oil.

TYPE	F	CH	D	H1	H2	NM	NETT. PRICE	
							£ STERLING	€ EUROS
TCSA								
TCSA14	1/4" BSP	17	19.5	9	7	5	£1.37	€ 1.85
TCSA38	3/8" BSP	18	22	10	7.5	8	£1.59	€ 2.14
TCSA12	1/2" BSP	24	28	11	7.5	9	£1.24	€ 1.67
TCSA34	3/4" BSP	30	34	11	9	11	£2.33	€ 3.15
TCSA1	1" BSP	35	42	12	10.5	20	£3.13	€ 4.23
TCSA114	1 1/4" BSP	42	51	13.5	12		£4.24	€ 5.73
TCSF								
TCSF38	3/8" BSP	18	22	10	7.5	8	£2.54	€ 3.42
TCSF12	1/2" BSP	24	28	11	7.5	9	£2.72	€ 3.67
TCSF34	3/4" BSP	30	34	11	9	11	£3.77	€ 5.09
TCSF1	1" BSP	35	42	12	10.5	20	£4.64	€ 6.27
TCSF114	1 1/4" BSP	42	51	13.5	12		£4.24	€ 5.73

TM DRAIN PLUG WITH MAGNET

www.flowfitonline.com
TECH. DATA SHEET
FA06

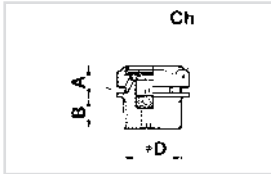


- Thermoplastic hex plug with magnet.
- The plug is mounted on the bottom of the transmission or tank, to be used as drain plug. The magnetic disk will attract ferrous metal parts and contains them, preventing damage to gears and other moving components.
- This plug is manufactured in the colour black, with a hot painted description MAGNETIC in a bright colour.
- Oil resistant asbestos free seal.
- In larger quantities, these plugs are available with other than the shown threads, ie: M16 18 20 22.

TYPE	F	CH	D	H1	H2	H3	NETT. PRICE	
							£ STERLING	€ EUROS
TM14	1/4"	17	20	9	7	5	£3.79	€ 5.11
TM38	3/8"	18	22	10	7.5	10	£4.89	€ 6.60
TM12	1/2"	24	27	11	8	9	£5.65	€ 7.62
TM34	3/4"	30	34	11	9	6.5	£7.58	€ 10.24
TM1	1"	35	42	12	10.5	14	£9.82	€ 13.26

KMF METAL FILLER PLUG WITH FILTER

www.flowfitonline.com
TECH. DATA SHEET
FA06

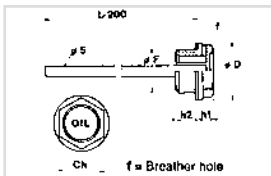


- SINTERED METAL FILTER 50/60 MICRON
- FIBRE ASBESTOS - FREE SEAL
- FOUR BREATHER HOLES ARE LOCATED UNDER THE HEX HEAD PROVIDING AN ADEQUATE BREATHING CAPACITY
- IDEAL FOR GEARBOXES AND TRANSMISSION APPLICATIONS

TYPE	ØD	CH	A	B	NETT. PRICE	
					£ STERLING	€ EUROS
KMF14	1/4" BSP	18	13	9	£5.97	€ 8.07
KMF38	3/8" BSP	22	14	10	£7.34	€ 9.93
KMF12	1/2" BSP	27	14	10	£8.10	€ 10.93

TCAS HEX PLUG WITH DIPSTICK AND BREATHER HOLE

www.flowfitonline.com
TECH. DATA SHEET
FA06

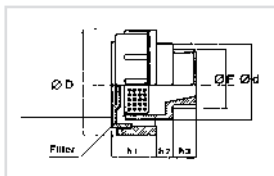


- Hex threaded plug with dipstick (diam. 4.5mm steel), material plug: (Polymide 66) maximum temperature 100/110°C.
- Oil resistant seal. ('O' ring, 70 shore)
- The model TCAS has a breather hole located in the side of the knurled head, with a diameter of 2-2.5mm.
- The standard dipstick is delivered in a 200mm length, on larger quantities they can be manufactured to the customers specific length, and MIN-MAX notches can be placed in the desired position.

TYPE	F	CH	D	H1	H2	NETT. PRICE	
						£ STERLING	€ EUROS
TCAS14	1/4" BSP	17	19	7	9	£2.32	€ 3.14
TCAS38	3/8" BSP	18	22	7.5	10	£2.47	€ 3.34
TCAS12	1/2" BSP	24	28	7.5	11	£2.62	€ 3.53
TCAS34	3/4" BSP	30	34	9	11	£3.23	€ 4.36
TCAS1	1" BSP	35	42	10.5	12	£3.89	€ 5.25
TCAS114	1 1/4" BSP	42	51	12	13.5	£5.11	€ 6.89
TCAS2	2" BSP	64	74	13.5	16	£8.24	€ 11.13

TMD - FILLER BREATHER WITH DOUBLE BREATHER HOLE TMDF - FILLER BREATHER WITH DOUBLE BREATHER HOLE AND FILTER

www.flowfitonline.com
TECH. DATA SHEET
FA06

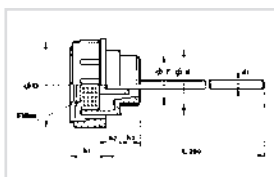


- Round headed Filler Breather, with vertical ribs for better grip. Oil resistant seal. ('O' ring, 70 shore)
- The Filler Breather is produced from Polyimide 66, ensuring high mechanical resistance at both low and higher temperatures. (maximum temperature 100/110°C)
- This product offers excellent dimensional stability and is shock resistant.
- These Filler Breathers allow air passage at high volume, through the vents located on the bottom of the head. They are recommended to be used in systems where a large amount of oil level changes take place in a short amount of time, allowing the air to enter and leave the system without any unwanted air pressure increase or decrease.
- Style TMDF has a standard Polyurethane foam filter (60 Micron) built in. This filter is located under the red lid, easy to remove, clean and reinstall.

TYPE	F	D	D	H1	H2	H3	NETT. PRICE	
							£ STERLING	€ EUROS
TMD								
TMD38	3/8"	36	23	17	5	11	£3.39	€ 4.58
TMD12	1/2"	41	28	18	5	12	£3.83	€ 5.17
TMD34	3/4"	47	33	17	5	12	£4.50	€ 6.08
TMD1	1"	52	38	20	5	12	£5.54	€ 7.48
TMD114	1 1/4"	63	49	23	5	13	£7.18	€ 9.69
TMD112	1 1/2"	63	55	23	5	13.5	£7.58	€ 10.24
TMDF								
TMDF38	3/8" BSP	36	23	17	5	11	£5.01	€ 6.77
TMDF12	1/2" BSP	41	28	18	5	12	£5.69	€ 7.69
TMDF34	3/4" BSP	47	33	17	5	12	£6.35	€ 8.58
TMDF1	1" BSP	52	38	20	5	12	£7.85	€ 10.59
TMDF114	1 1/4" BSP	63	49	23	5	13	£9.91	€ 13.38
TMDF112	1 1/2" BSP	63	55	23	5	13.5	£10.45	€ 14.12

TMDA FILLER BREATHER WITH LARGE BREATHER HOLE AND DIPSTICK TMDFA FILLER BREATHER WITH LARGE BREATHER HOLE, DIPSTICK AND FILTER

www.flowfitonline.com
TECH. DATA SHEET
FA06

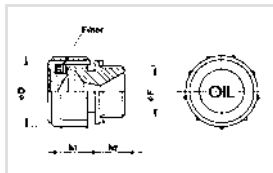


- The below Filler Breathers have the same characteristics as the models TMD - TMDF, but are equipped with a dipstick.
- The standard dipstick is 200mm in length.

TYPE	F	D	D	H1	H2	H3	NETT. PRICE	
							£ STERLING	€ EUROS
TMDA								
TMDA38	3/8" BSP	36	23	17	5	11	£4.75	€ 6.42
TMDA12	1/2" BSP	41	28	18	5	12	£5.21	€ 7.03
TMDA34	3/4" BSP	47	33	17	5	12	£6.48	€ 8.74
TMDA1	1" BSP	52	38	20	5	12	£6.99	€ 9.43
TMDA114	1 1/4" BSP	63	49	23	5	13	£9.09	€ 12.28
TMDA112	1 1/2" BSP	63	55	23	5	13.5	£9.15	€ 12.36
TMDFA								
TMDFA38	3/8" BSP	36	23	17	5	11	£6.75	€ 9.10
TMDFA12	1/2" BSP	41	28	18	5	12	£7.43	€ 10.02
TMDFA34	3/4" BSP	47	33	17	5	12	£8.68	€ 11.73
TMDFA1	1" BSP	52	38	20	5	12	£9.09	€ 12.28
TMDFA114	1 1/4" BSP	63	49	23	5	13	£11.62	€ 15.69
TMDFA112	1 1/2" BSP	63	55	23	5	13.5	£12.52	€ 16.90

TSF NEW VENT PLUG TO REDUCE OIL OIL DAMP ESCAPE

www.flowfitonline.com
TECH. DATA SHEET
FA06



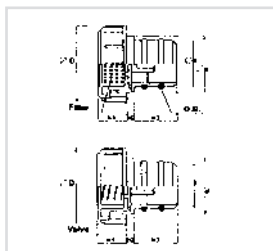
- Filler Breather with easy grip vertical ribs, manufactured from Thermoplastic material (Polymide 66). Maximum working temperature 100°C.
- These style Filler Breathers are produced in black with a red lid, with the text "OIL". On large orders a custom text or company logo is possible.
- A standard flat rubber seal is used, but a 'O' ring seal is available, both in NBR 70 shore.
- Located under the lid is a Polyurethane foam filter (50 Micron) installed, which is easy to be cleaned once the lid is removed.
- The series TSF has a specially designed cavity which prevents oil from escaping through the Breather holes when it is splashed in an upward direction, often occurring when there is a strong oil movement due to rotating gears.
- The inside of the TSF features a conical cavity which, due to its design entraps oil but allows air to escape and enter (within limitations).
- These Filler Breather plugs are utilised on hydraulic power packs, oil tanks, gear reduction boxes, gearboxes or any application where strong movement causes splashing oil in or around the Filler Breather.

TYPE	F	D	H1	H2	NETT. PRICE	
					£ STERLING	€ EUROS
TSF14	1/4" BSP	30	21	10	£3.32	€ 4.47
TSF38	3/8" BSP*	30	21	10	£3.62	€ 4.88
TSF12	1/2" BSP*	30	21	10	£3.89	€ 5.25

*On request available in NPT

TPF - PRESS-FIT FILLER BREATHER WITH LARGE BREATHER HOLE AND FILTER

www.flowfitonline.com
TECH. DATA SHEET
FA06



- Press-fit Filler Breather with easy grip vertical ribs.
- These Filler Breathers are not threaded, but fit snugly into a pre-drilled hole and seal by means of 'O' rings located on the stem. Hole tolerances: -0 + 0.1mm.
- These Filler Breathers are produced from Thermoplastic Polymide 66 which offers high mechanical resistance at both lower and higher temperatures (100°C max).
- Seals: 2 Oil resistant 'O' Rings, NBR 70 shore.
- The Filler Breather model TPF has a large breathing capacity and is applied where a high volume of air change takes place, in example, hydraulic systems that utilise high ratio hydraulic cylinders. They are not recommended for usage on mobile equipment, where strong movement of the oil tank is present.

TYPE	F	D	D	H1	H2	H3	NETT. PRICE	
							£ STERLING	€ EUROS
TPF								
TPF18	18	36	23	17	5	10	£6.17	€ 8.33
TPF20	20	36	24	17	4	19	£6.81	€ 9.20
TPF26	26	41	28	17	4	21	£7.51	€ 10.13
TPF30	30	47	33	17	4	21	£9.03	€ 12.18

