



FILTRAZIONE IDRAULICA  
HYDRAULIC FILTRATION



**FILTREC®**  
Technical Filtration

serie  
**FCR-7**



## Serie FCR-7

Filtri sul ritorno  
Return filter



### FILTER HOUSING

**Description:**  
**Max flow rate:**  
**Max working pressure:**  
**Test pressure:**  
**Burst pressure:**  
**Connection Ports:**  
**Indicator:**  
**Working temperature:**  
**By-pass setting:**  
**Materials:**

**Fluids compatibility:**

### FILTER ELEMENT

**Filter media:**

**Collapse pressure:**

### Technical Information

Tank top mounting design return line with reusable or disposable element.  
600 l/min (158 gpm)

As per NFPA T 3.10.5.1: 8 Bar (116 psi)

As per NFPA T 3.10.5.1: 12 Bar (174 psi)

As per NFPA T 3.10.5.1: 16 Bar (232 psi)

BSP, NPT, SAE J514b, SAE J518

Visual and electrical.

-25°C +100°C (-13°F +212°F)

0,8 or 1,7 Bar (11.6 or 24.6 psi)

- Cover: nylon - aluminium
- Head: aluminium
- Bowl: carbon steel
- Seal: Buna-N / Viton®

ISO 2943: Filter assembly compatible with mineral oils and some synthetic or vegetable oils. With other fluid applications please contact Filtrac S.p.A.

Microglass fiber 3, 6, 10, 25 µm

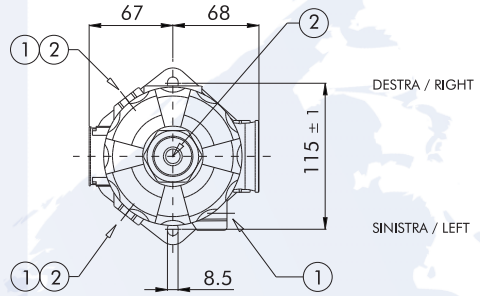
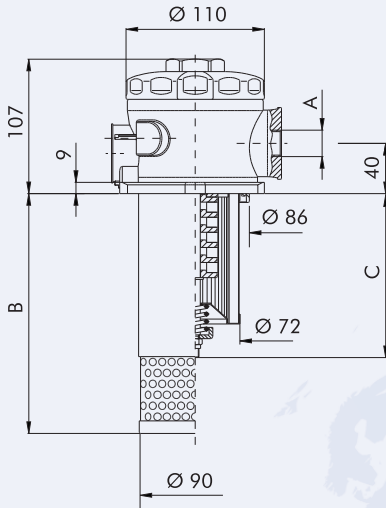
Cellulose 10, 25 µm

Wire mesh 10, 25, 40, 60, 100, 120 µm

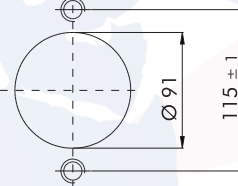
As per ISO 2941: 10 Bar (145 psi)

**Informazioni dimensionali - Overall dimensions**

**FCR-7-11 / 12 / 13 / 14**



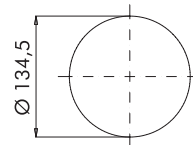
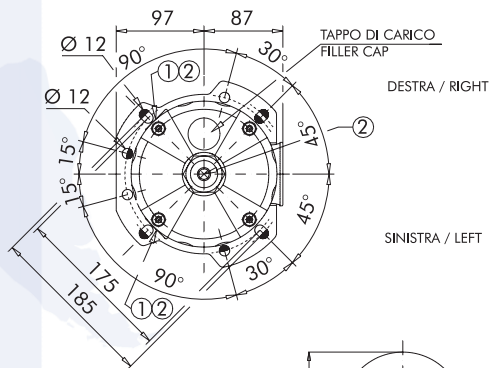
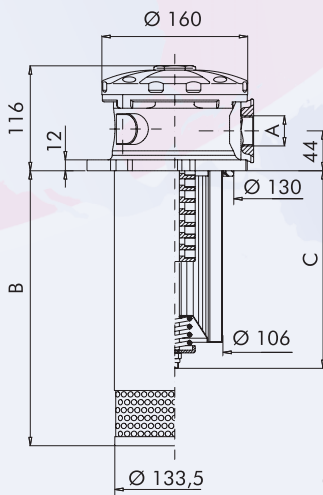
2 FORI M8  
2 M8 THREAD HOLES



FORATURA SERBATOIO  
TANK HOLE DIMENSIONS

- ① POSIZIONE INGRESSO SECONDARIO (D)  
SECOND PORT OPTION (D)
- ② POSIZIONE INDICATORE  
INDICATOR PORT 1/8" BSP

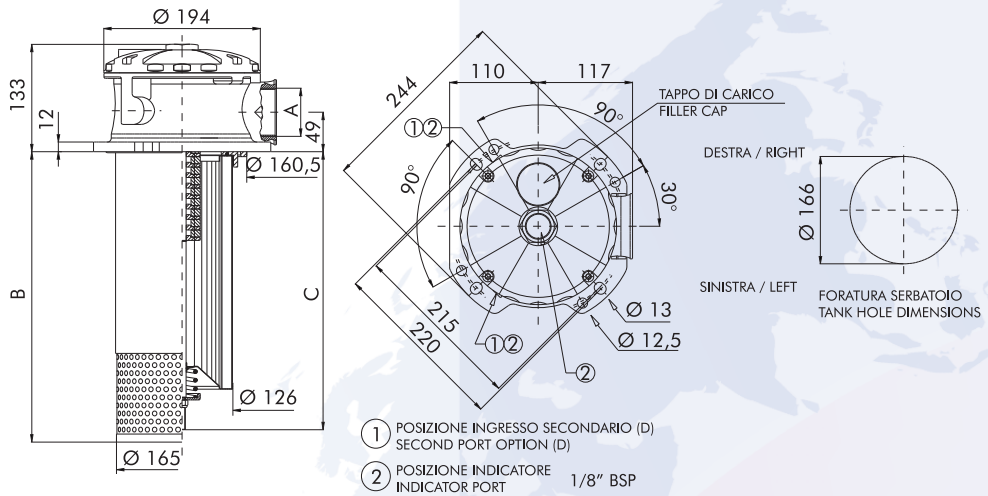
**FCR-7-20 / 21 / 22**



FORATURA SERBATOIO  
TANK HOLE DIMENSIONS

- ① POSIZIONE INGRESSO SECONDARIO (D)  
SECOND PORT OPTION (D)
- ② POSIZIONE INDICATORE  
INDICATOR PORT 1/8" BSP

FCR-7-30 / 31 / 32 / 33



## 1) Grandezza nominale - Nominal size

Codice - Code	A	B	C	D	Cart. ricambio - Element
<b>FCR-7-11</b>	1/2" - 3/4" - 1" - 1 1/4" BSP	195	133		R-7-11
<b>FCR-7-12</b>	1/2" - 3/4" - 1" - 1 1/4" NPT 3/4"-16 UNF - SAE J514b	195	178	3/8" - 1/2" BSP 3/8" - 1/2" NPT	R-7-12
<b>FCR-7-13</b>	1 1/16"-12 UN-SAE J514b 1 5/16"-12 UN-SAE J514b	345	228	9/16"-18 UN-SAE J514b 3/4"-16 UN - SAE J514b	R-7-13
<b>FCR-7-14</b>	1 5/8"-12 UN-SAE J514b	345	328		R-7-14
<b>FCR-7-20</b>	1" - 1 1/4" - 1 1/2" BSP 1" - 1 1/4" - 1 1/2" NPT	310	233	3/8" - 1/2" - 3/4" BSP 3/8" - 1/2" - 3/4" NPT	R-7-20
<b>FCR-7-21</b>	1 5/16"-12 UN-SAE J514b 1 5/8"-12 UN-SAE J514b 1 7/8"-12 UN-SAE J514b 1 1/4" SAE J518 - 3000	310	303	9/16"-18 UN-SAE J514b 3/4"-16 UN - SAE J514b 1 1/16"-12 UN-SAE J514b	R-7-21
<b>FCR-7-22</b>	1 1/2" SAE J518 - 3000	515	508		R-7-22
<b>FCR-7-30</b>	1 1/2" - 2" BSP	360	265		R-7-30
<b>FCR-7-31</b>	1 1/2" - 2" NPT 1 7/8"-12 UN-SAE J514b	360	345	3/8" - 1/2" - 3/4" BSP 3/8" - 1/2" - 3/4" NPT	R-7-31
<b>FCR-7-32</b>	2 1/2"-12 UN-SAE J514b 1 1/2" SAE J518 - 3000	550	535	9/16"-18 UN-SAE J514b 3/4"-16 UN - SAE J514b 1 1/16"-12 UN-SAE J514b	R-7-32
<b>FCR-7-33</b>	2" SAE J518 - 3000	550	445		R-7-33

## 2) Grado di filtrazione - Filtration ratings

Codice - Code	Materiale - Media	Efficienza - Efficiency
<b>0</b>	senza cartuccia / no element	-----
<b>G03</b>	microfibra inorganica / microglass fiber	$\beta_{4,5 \mu\text{m (C)}} \geq 1000$
<b>G06</b>	microfibra inorganica / microglass fiber	$\beta_{7 \mu\text{m (C)}} \geq 1000$
<b>G10</b>	microfibra inorganica / microglass fiber	$\beta_{12 \mu\text{m (C)}} \geq 1000$
<b>G25</b>	microfibra inorganica / microglass fiber	$\beta_{27 \mu\text{m (C)}} \geq 1000$
<b>C10</b>	carta trattata / resin impregnated cellulose	$\beta_{10 \mu\text{m (C)}} \geq 2$
<b>C25</b>	carta trattata / resin impregnated cellulose	$\beta_{25 \mu\text{m (C)}} \geq 2$
<b>T10</b>	tela metallica / wire mesh	-----
<b>T25</b>	tela metallica / wire mesh	-----
<b>T40</b>	tela metallica / wire mesh	-----
<b>T60</b>	tela metallica / wire mesh	-----
<b>T100</b>	tela metallica / wire mesh	-----
<b>T120</b>	tela metallica / wire mesh	-----

## 3) Guarnizioni - Seals

Codice - Code	Tipo - Type
---	NBR
<b>V</b>	Viton®

## 4) Connesioni - Connection port

Codice - Code	Connessione - Connection
<b>B3</b>	1/2" BSP
<b>B4</b>	3/4" BSP
<b>B5</b>	1" BSP
<b>B6</b>	1 1/4" BSP
<b>B7</b>	1 1/2" BSP
<b>B8</b>	2" BSP
<b>F6M</b>	1 1/4" SAE J518 - 3000/M
<b>F7M</b>	1 1/2" SAE J518 - 3000/M
<b>F8M</b>	2" SAE J518 - 3000/M
<b>F6U</b>	1 1/4" SAE J518 - 3000/UNC
<b>F7U</b>	1 1/2" SAE J518 - 3000/UNC
<b>F8U</b>	2" SAE J518 - 3000/UNC
<b>N3</b>	1/2" NPT
<b>N4</b>	3/4" NPT
<b>N5</b>	1" NPT
<b>N6</b>	1 1/4" NPT
<b>N7</b>	1 1/2" NPT
<b>N8</b>	2" NPT
<b>R3</b>	3/4" - 16 UNF-2B SAE J514b
<b>R4</b>	1 1/16" - 12 UN-2B SAE J514b
<b>R5</b>	1 5/16" - 12 UN-2B SAE J514b
<b>R6</b>	1 5/8" - 12 UN-2B SAE J514b
<b>R7</b>	1 7/8" - 12 UN-2B SAE J514b
<b>R8</b>	2 1/2" - 12 UN-2B SAE J514b

Contattare ufficio commerciale  
Contact sales department

## 5) Posizione ingressi secondari Second port position

Codice - Code	Posizione - Position
<b>0</b>	senza / without
<b>D</b>	destra / right
<b>S</b>	sinistra / left

## 6) Ingressi secondari Second connection port

Codice - Code	Connessione - Connection
<b>B2</b>	3/8" BSP
<b>B3</b>	1/2" BSP
<b>B4</b>	3/4" BSP
<b>N2</b>	3/8" NPT
<b>N3</b>	1/2" NPT
<b>N4</b>	3/4" NPT
<b>R2</b>	9/16" - 18 UNF-2B SAE J514b
<b>R3</b>	3/4" - 16 UNF-2B SAE J514b
<b>R4</b>	1 1/16" - 12 UN-2B SAE J514b

## 7) Taratura by-pass - By-pass setting

Codice - Code	Taratura - Setting
<b>V08</b>	Taratura 0,8 Bar Setting 0.8 Bar (11.6 psi)
<b>V17</b>	Taratura 1,7 Bar Setting 1,7 Bar (24.6 psi)

## 8) Colonna magnetica - Magnets

Codice - Code	Colonna magnetica - Magnets
<b>0</b>	senza / without
<b>M</b>	con / with

## 9) Diffusore - Diffuser

Codice - Code	Diffusore - Diffuser
<b>0</b>	senza / without
<b>S</b>	con / with

## 10) Tappo di carico - Filler cap

Codice - Code	Tappo di carico - Filler cap
<b>0</b>	senza / without
<b>T</b>	con / with

Non disponibile per serie FCR-7-11-...-14  
Not available for FCR-7-11-...-14

## 11) Posizione indicatore Indicator position

Codice - Code	Posizione - Position
<b>0</b>	senza / without
<b>C</b>	coperchio / cover
<b>D</b>	destra / right
<b>S</b>	sinistra / left

## 12) Indicatori - Indicators

Codice Code	Tipo indicatore - Indicator type	Taratura Setting
<b>0</b>	senza / without	----
<b>R1</b>	manometro scala pressure gauge indicator scale	0 ÷ 10 Bar 0 ÷ 145 psi
<b>R2</b>	pressostato n.a. taratura pressure switch O.C.	1,3 Bar 8,85 psi O.C.
<b>R3</b>	pressostato n.c. taratura pressure switch C.C.	1,3 Bar 18,85 psi C.C.
<b>R7*</b>	manovuotometro taratura pressure vacuum gauge	-1 ÷ 5 Bar -14,5 ÷ 72,5 Psi

\* Solo per valvola taratura 1,7 Bar

\* Only for valve 24,65 psi

## Codici per l'ordinazione - Ordering information

**Filtro completo**  
Filter assembly

**FCR-7**

<b>20</b>	<b>C10</b>	<b>V</b>	<b>B3</b>	<b>D</b>	<b>B3</b>	<b>V17</b>	<b>M</b>	<b>S</b>	<b>T</b>	<b>C</b>	<b>R1</b>
1*	2*	3*	4*	5*	6*	7*	8*	9*	10*	11*	12*

**Cartuccia**  
Filter element

**R-7**

<b>20</b>	<b>C10</b>	<b>V</b>
1*	2*	3*

## Curve di portata - Pressure drop charts

Le curve (secondo ISO 3968 classe B) sono ottenute con olio minerale avente viscosità di 30 cSt e densità di 0,86 Kg/dm<sup>3</sup>.

Per viscosità e densità diverse i dati variano.

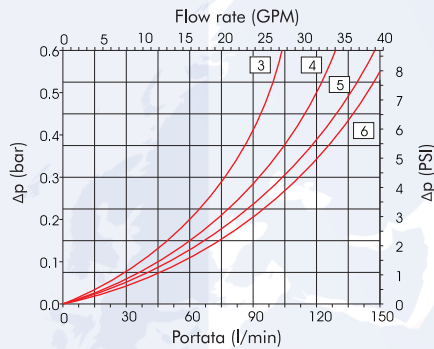
Il numero relativo alla curva di portata è riferito all'attacco del filtro; es.: 3 indica attacco B3 o N3.

*Pressure drop charts (as per ISO 3968 class B) are obtained using mineral oil with 30 cSt viscosity and 0,86 Kg/dm<sup>3</sup> density.*

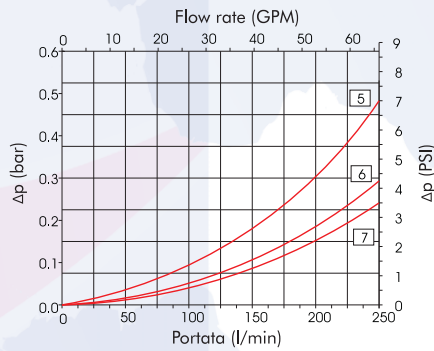
*With different values of viscosity and density data may vary.*

*The numbers indicate connection of the filters: i.e. 3 means B3 or N3 connections.*

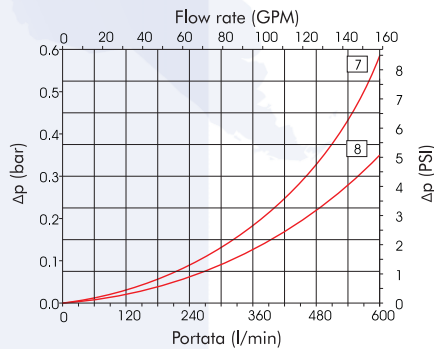
FCR-7-11 / 12 / 13 / 14



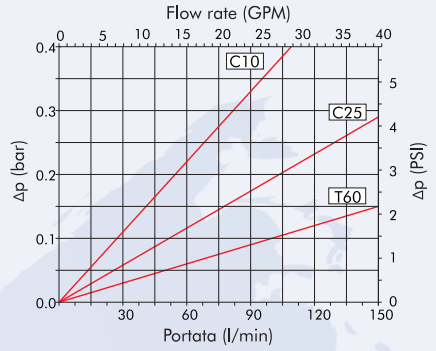
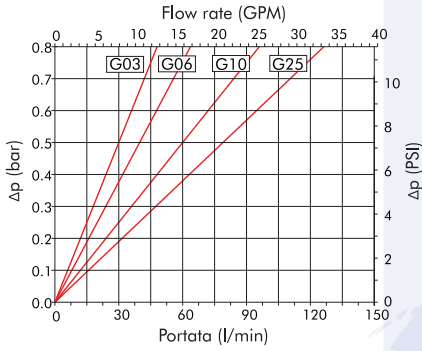
FCR-7-20 / 21 / 22



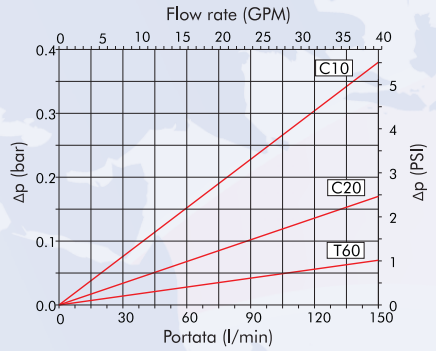
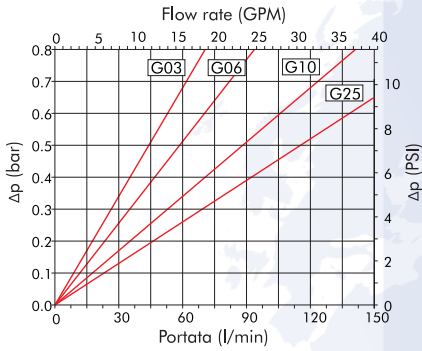
FCR-7-30 / 31 / 32 / 33



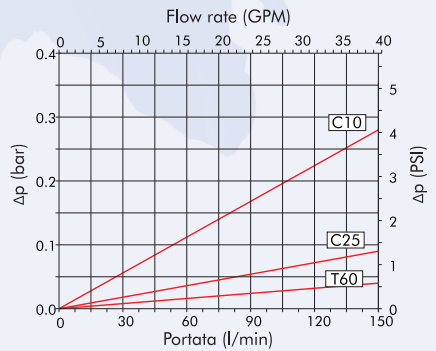
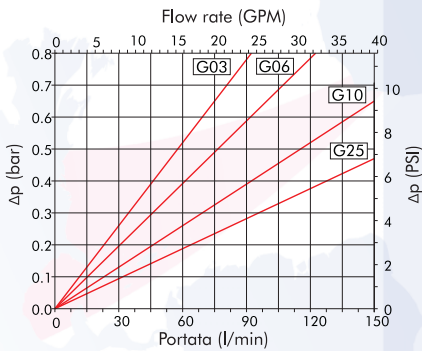
**R-7-11**



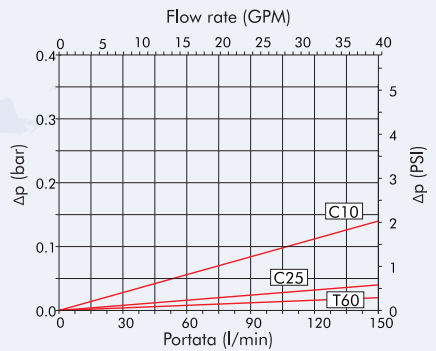
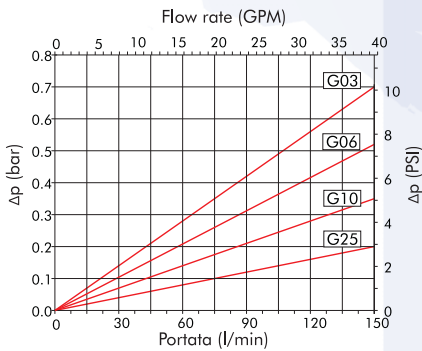
**R-7-12**



**R-7-13**

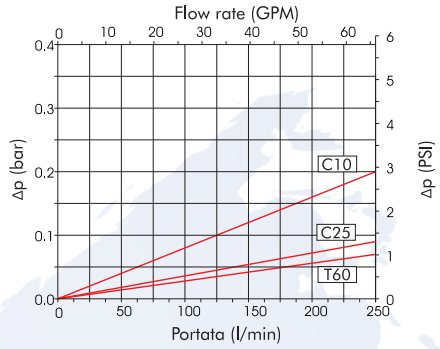
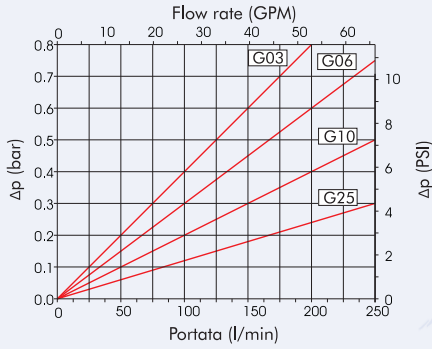


**R-7-14**

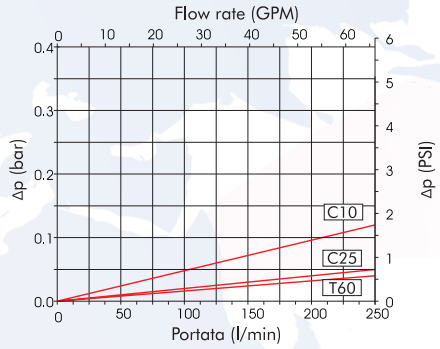
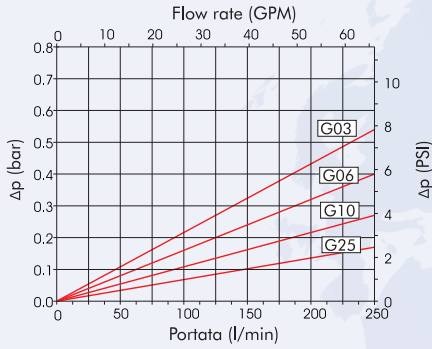




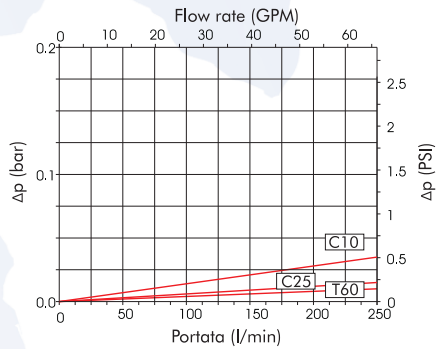
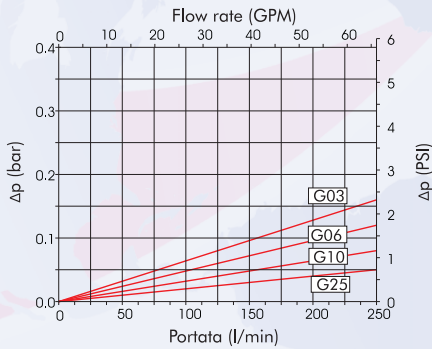
**R-7-20**



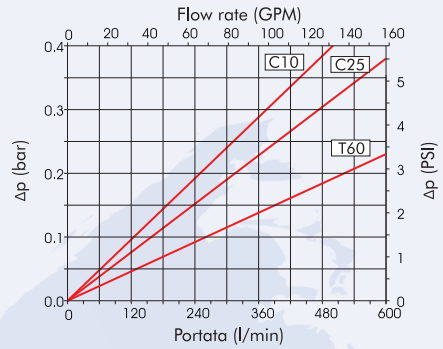
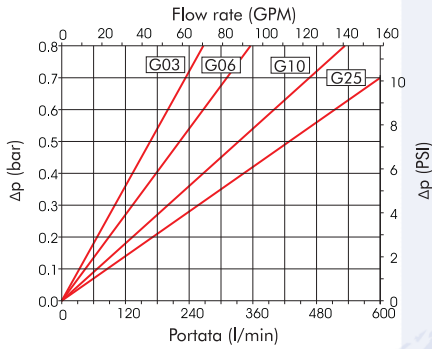
**R-7-21**



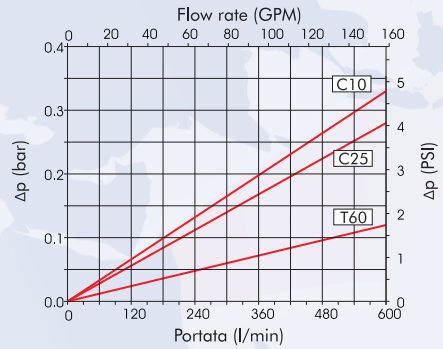
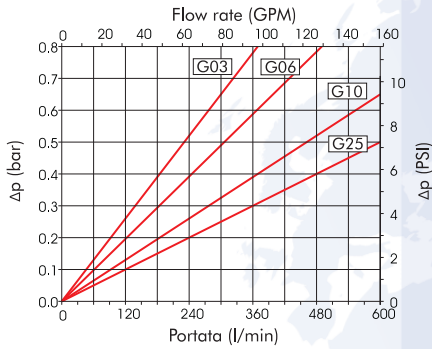
**R-7-22**



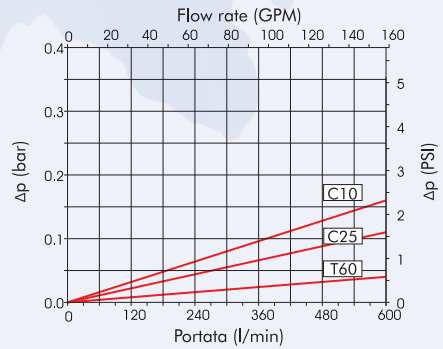
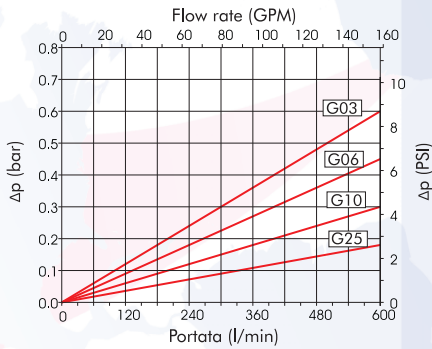
**R-7-30**



**R-7-31**



**R-7-32**



**R-7-33**

