

Type	BM5-315	BM5-400	BM5-500	BM5-630	BM5-800	BM5-985
L	214	221	229	239	253	268
L1	244	251	259	269	283	298
L2	156	163	171	181	195	210
L3	186	193	201	211	225	240
B	19	26	34	44	58	73

BM5 PORTS CODE

Code	Ports	P(A, B)(deep)	C (deep)	T (deep)
Y		G1 (18)	M12(12)	G1/4(12)
Y1		G3/4(18)	M12(12)	G1/4(12)
Y2		M33 × 2(18)	M12(12)	M14 × 1.5(12)
Y3		M27 × 2(18)	M12(12)	M14 × 1.5(12)
Y8		1 5/16-12UN(18)	—	9/16-18UNF(12)

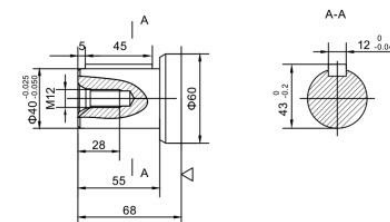
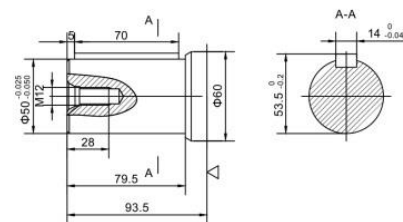
P(A, B)—Ports, C—Mounting Thread (—Indicates no this thread), T—Drain connettion

BM5 SHAFT VERSION

Only match A1,A7 flange

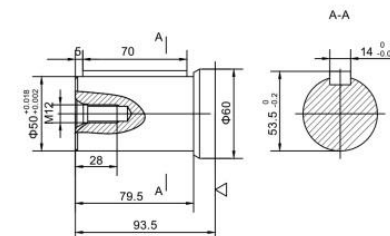
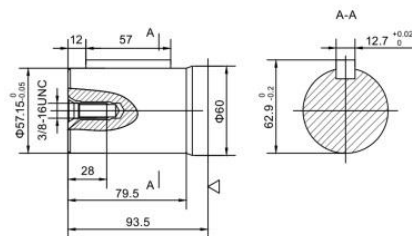
P: Φ50 Cylindrical shaft, parallel key14 × 9 × 70

P1: Φ40 Cylindrical shaft, parallel key12 × 8 × 45



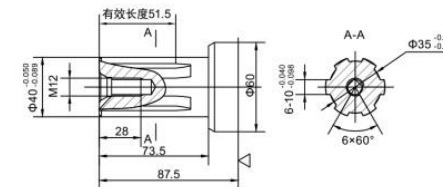
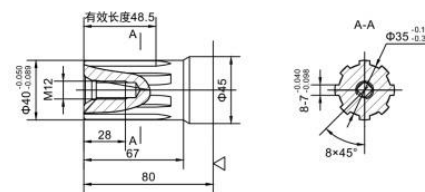
P12: Φ57.15 Cylindrical shaft, parallel key12.7 × 12.7 × 75

P99: Φ50 Cylindrical shaft, parallel key14 × 9 × 70



H4: Φ40 Splined shaft, 8-40 × 35 × 7

H5: Φ40 Splined shaft, 6-40 × 35 × 10

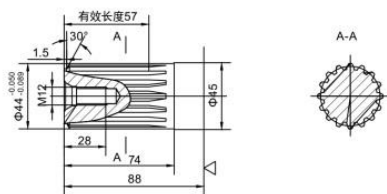


◁ : Motor mounting surface

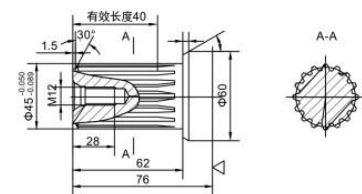
■ BM5 SHAFT VERSION

Only match A1,A7 flange

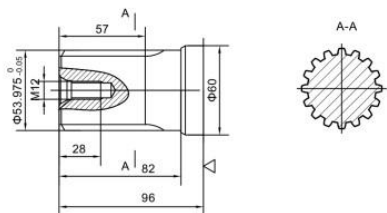
K2: $\Phi 44$ involute splined shaft m2.5 z16 $a=30^\circ$



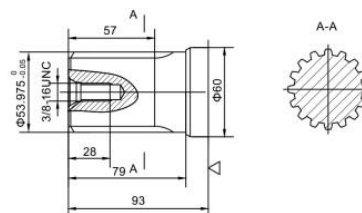
K3: $\Phi 45$ involute splined shaft m2.5 z17 $a=30^\circ$



K5: $\Phi 53.975$ involute splined shaft 16-DP8/16 $a=30^\circ$



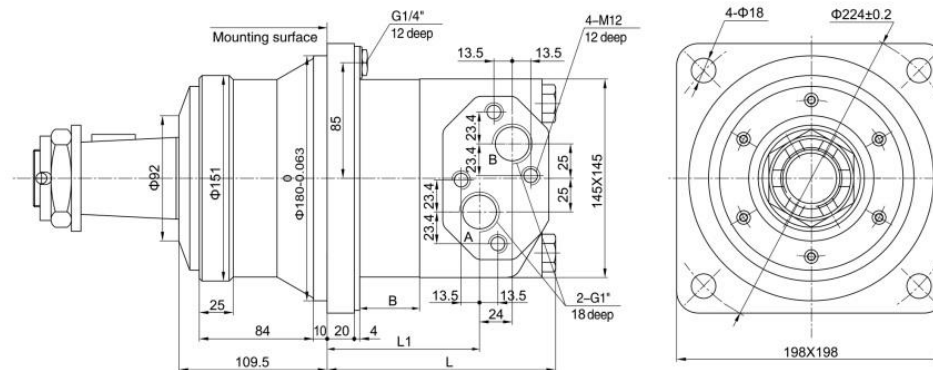
K12: $\Phi 53.975$ involute splined shaft 16-DP8/16 $a=30^\circ$



Note: Flange with A type, hydraulic motor shaft from the mounting surface to increase 29mm.

◁ : Motor mounting surface

■ BM5W Installation

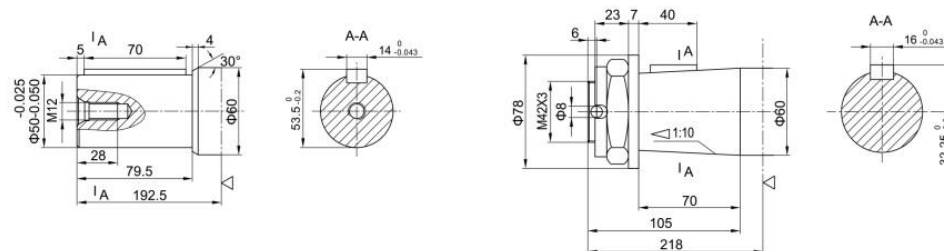


TYPE	BM5W-315	BM5W-400	BM5W-500	BM5W-630	BM5W-800	BM5W-985
L	146	153	161	172	185	200.5
L1	86	93	101	111	125	140
B	19	26	34	44	58	73

■ BM5W SHAFT VERSION

P: $\Phi 50$ Cylindrical shaft, parallel key 14X9X70

Z: $\Phi 60$ Tapered shaft, taper1: 10, parallel key B16X10X32



◁ : Motor mounting surface