

■ BM4 TECHNICAL DATA

TYPE	BM4-160 BM4S-160 BM4W-160	BM4-200 BM4S-200 BM4W-200	BM4-250 BM4S-250 BM4W-250	BM4-320 BM4S-320 BM4W-320	BM4-400 BM4S-400 BM4W-400	BM4-500 BM4S-500 BM4W-500
Displacement(ml/r)	158.8	200.8	252.2	317.5	401.6	535.3
Max.Pressure.Drop (Mpa)	cont. 20 int. 24 peak. 28	20 24 28	20 24 28	20 24 28	18 21 24	16 18 21
Max.torque (N.m)	cont. 450 int. 559 peak. 663	561 714 818	710 883 1021	902 1143 1322	1008 1255 1431	1121 1377 1598
Speed.Range(cont.)(r/min)	10-625	9-500	8-400	7-312	6-250	5-175
Max.Flow(cont.)(L/min)	100	100	100	100	100	100
Max.Output.Power(cont.)(Kw)	20.1	25.2	25.2	25.2	22	21
Weight (kg)	20.3	20.8	21.4	22.4	23	24

Intermittent operation the permissible values may occur for max. 10% of every minute

Peak load: the permissible values may occur for max. 1% of every minute

■ BM4 PERFORMANCE DATA

BM4 160[158.8cm³/rev]
Pressure (Mpa)

Flow(L/min)	Max.cont. Max.int.						
	4	8	10	12	16	20	24
10	85 61	169 60	219 59	264 57	347 55	429 51	514 45
20	86 123	174 122	225 119	266 116	357 111	441 105	535 97
40	87 254	173 251	226 248	266 241	366 235	452 228	550 216
60	79 378	171 374	226 369	266 363	366 356	450 347	549 337
80	75 502	166 499	220 495	265 488	364 480	447 472	544 457
Max.cont. 100	67 626	154 623	209 618	258 610	355 602	437 594	536 581
Max.int. 125	56 785	142 779	211 773	251 765	345 756	430 746	530 729

BM4 250[252.2cm³/rev]
Pressure (Mpa)

Flow(L/min)	Max.cont. Max.int.						
	4	8	10	12	16	20	24
10	134 39	277 39	344 38	406 37	542 35	689 33	800 32
20	139 78	287 77	353 76	419 74	563 72	708 69	828 64
40	135 159	292 157	361 155	427 152	575 149	723 145	858 137
60	128 242	285 241	361 238	428 234	574 228	705 223	861 211
80	125 323	275 322	353 320	420 314	569 309	699 305	860 290
Max.cont. 100	123 404	274 402	344 399	414 395	565 389	695 380	853 366
125	113 505	252 502	330 498	402 492	551 485	682 478	838 463
Max.int. 150	85 603	235 600	310 596	385 591	535 583	666 576	822 558

BM4 400[401.6cm³/rev]
Pressure (Mpa)

Flow(L/min)	Max.cont. Max.int.						
	3	6	9	12	15	18	21
10	165 25	343 24	524 23	669 22	827 21	982 20	1130 19
20	167 51	346 50	528 49	679 46	841 44	1001 42	1156 40
40	165 99	346 98	530 96	685 93	859 90	1020 86	1181 82
60	163 149	338 147	526 143	682 139	860 135	1024 131	1187 125
80	155 199	330 197	517 194	672 190	853 186	1014 182	1181 176
Max.cont. 100	140 249	317 247	503 245	662 241	838 235	998 231	1171 225
125	126 311	289 309	490 307	643 303	816 298	977 294	1142 287
Max.int. 150	118 375	273 373	475 369	623 365	797 361	954 357	1119 350

Torque: 797Nm
Speed: 361r/min

BM4 160[200.8cm³/rev]
Pressure (Mpa)

Flow(L/min)	Max.cont. Max.int.						
	4	8	10	12	16	20	24
10	119 48	221 47	275 46	323 43	431 40	532 38	636 34
20	120 97	227 96	283 94	330 92	445 89	547 86	661 77
40	115 199	229 197	281 195	334 191	451 187	560 182	680 171
60	111 306	225 301	280 298	334 296	454 288	560 282	682 269
80	103 403	220 401	275 397	333 392	450 445	557 551	680 676
Max.cont. 100	94 503	216 500	272 496	327 492	447 487	551 547	676 670
Max.int. 125	80 627	198 623	262 619	316 614	436 607	538 600	662 654
150	67 758	184 754	247 749	308 741	425 731	526 720	648 696

BM4 320[317.5cm³/rev]
Pressure (Mpa)

Flow(L/min)	Max.cont. Max.int.						
	4	8	10	12	16	20	24
10	175 31	345 30	430 29	518 28	697 27	847 26	1011 24
20	180 62	361 61	449 60	534 58	719 56	871 54	1054 52
40	182 126	362 125	460 123	542 120	735 117	906 114	1092 109
60	180 189	361 187	473 185	544 181	733 178	914 176	1096 166
80	170 251	354 249	459 248	540 243	730 238	906 234	1095 224
Max.cont. 100	161 314	342 313	447 310	537 307	720 303	895 297	1086 284
125	140 391	321 389	427 386	519 382	708 378	874 373	1071 360
Max.int. 150	113 471	303 469	412 466	501 462	677 457	849 444	1042 438

BM4 500[535.3cm³/rev]
Pressure (Mpa)

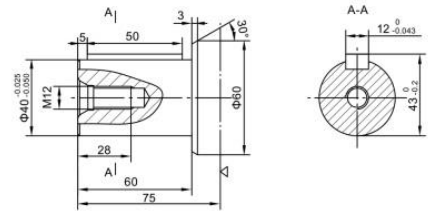
Flow(L/min)	Max.cont. Max.int.						
	3	6	9	12	14	16	18
10	204 18	415 18	637 18	821 17	966 16	1098 15	1233 13
20	213 37	427 36	656 35	845 34	984 33	1122 32	1267 30
40	212 75	429 74	669 73	866 72	1007 70	1145 68	1308 64
60	207 113	421 112	657 111	866 109	1001 107	1146 105	1296 101
80	196 151	397 150	640 149	853 147	990 145	1145 143	1289 138
Max.cont. 100	179 189	387 188	626 187	829 185	978 183	1126 181	1272 177
125	168 237	366 236	590 235	807 233	942 231	1103 229	1244 225
Max.int. 150	135 284	339 283	569 282	785 280	924 278	1074 276	1219 272

Cont.
Int.

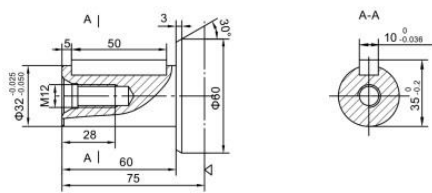
■ BM4 SHAFT VERSION

Only match A,A1,A7 flange

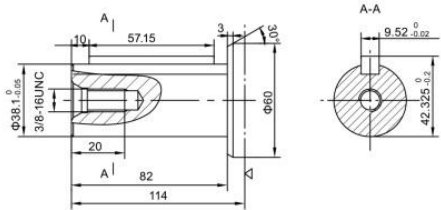
P: $\Phi 40$ Cylindrical shaft, parallel key $12 \times 8 \times 50$



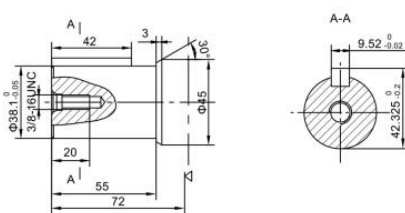
P1: $\Phi 32$ Cylindrical shaft, parallel key $10 \times 8 \times 50$



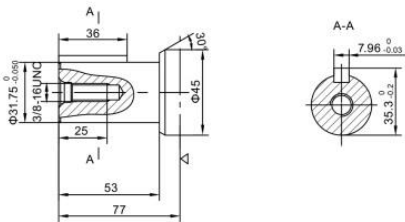
P11: $\Phi 38.1$ Cylindrical shaft, parallel key $9.525 \times 9.525 \times 57.15$



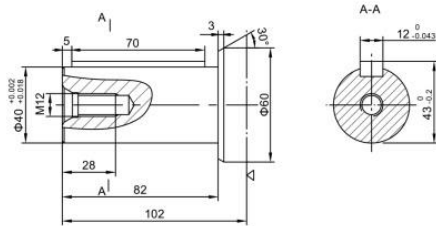
P12: $\Phi 38.1$ Cylindrical shaft, parallel key $9.525 \times 9.525 \times 42$



P13: $\Phi 31.75$ Cylindrical shaft, parallel key $7.96 \times 7.96 \times 36$



P33: $\Phi 40$ Cylindrical shaft, parallel key $12 \times 8 \times 70$

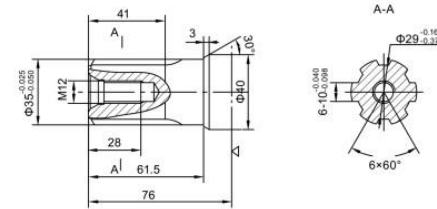


◁ : Motor mounting surface

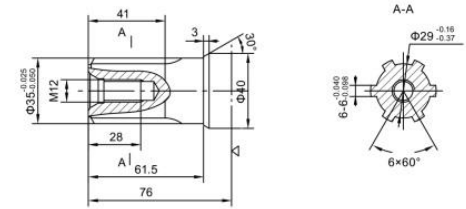
■ BM4 SHAFT VERSION

Only match A,A1,A7 flange

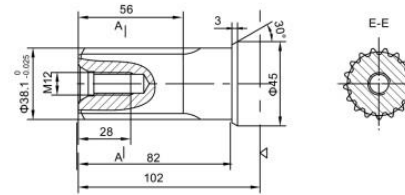
H4: $\Phi 35$ Splined shaft, 6-35 x 29 x 10



H5: $\Phi 35$ Splined shaft, 6-35 x 29 x 6



K3: $\Phi 38.1$ involute splined shaft 17-DP12/24 a=30°



Note: Flange with A4 type, hydraulic motor shaft from the mounting surface to increase 12mm.

◁ : Motor mounting surface

